

Attachment H.2b
Intertie Site Plan Drawing Sheet (LU-500)

GENERAL SHEET NOTES

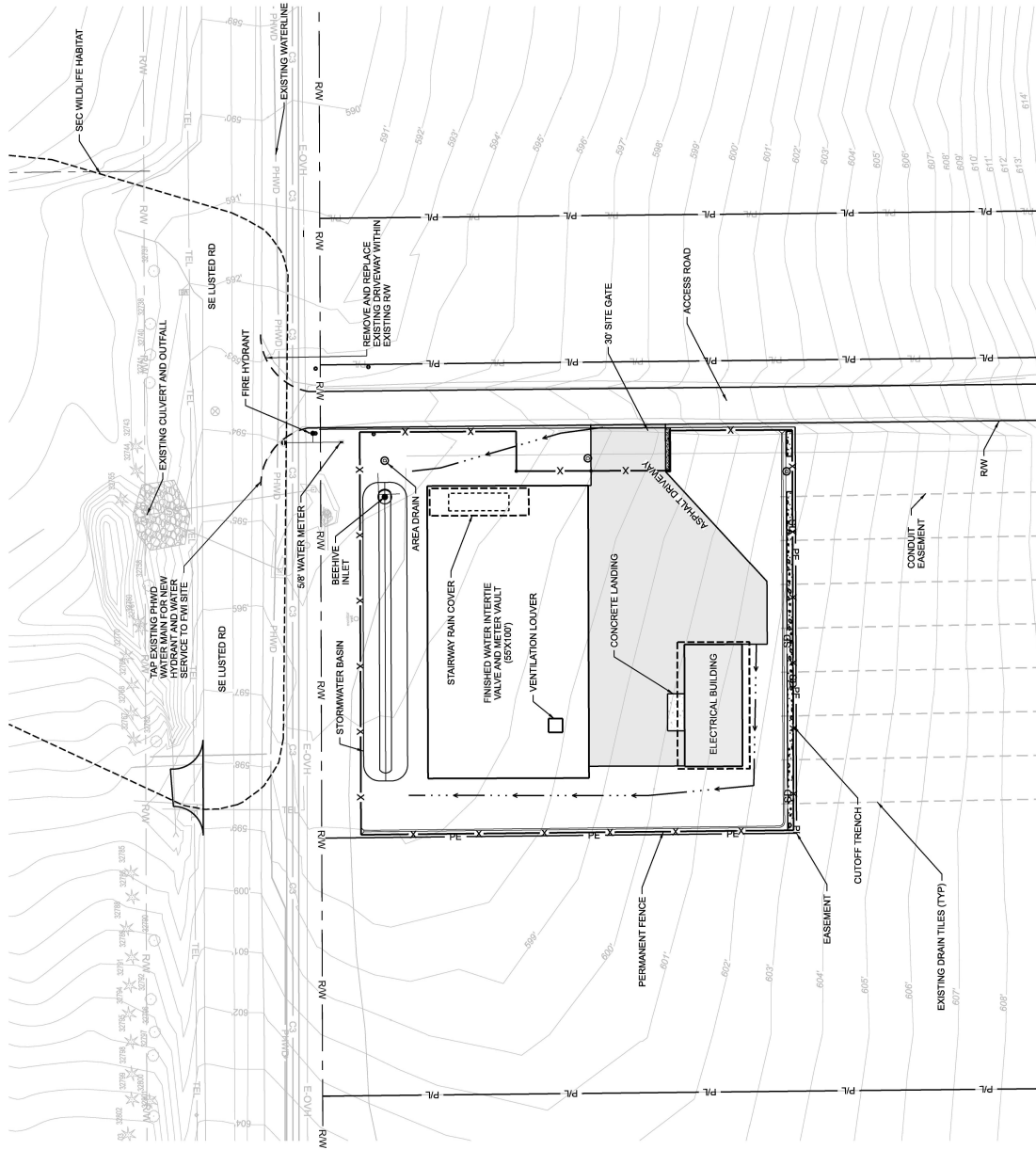
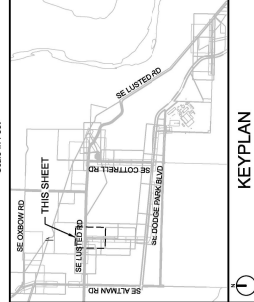
1. SEE ARCHITECTURAL SHEETS FOR INTERTIE VAULT DETAILS AND LANDSCAPE SHEETS FOR PLANTED YARD AREAS

CONSTRUCTION NOTES

1. SHEET KEYNOTES APPLY TO SPECIFIC DRAWING ELEMENTS ON THE SHEET THEY ARE LOCATED.

LEGEND

- ADP FULL DEPTH RECONSTRUCTION MATCH COUNTY STANDARD SECTION GREATER
- GRAVEL
- CONCRETE
- STORM DRAINAGE CULVERT
- SEC ZONE
- CONFEROUS TREE
- DECIDUOUS TREE
- COUNTY LINE
- PROPERTY LINE
- RIGHT-OF-WAY
- EXISTING EASEMENT
- PROPOSED EASEMENT
- TEMP CONSTRUCTION EASEMENT
- DITCH



BWP Project No. W02563	
1st Edition	3866
Sheet No.	LU-500

**Bull Run Filtration Pipelines
FINISHED WATER INTERTIE
SITE PLAN**



DATE: _____
 DESIGNED BY: _____
 CHECKED BY: _____
 PROJECT MGR: _____

PORTLAND WATER BUREAU
 FROM FOREST TO FAUCET

WARNING
 THIS DRAWING IS PRELIMINARY AND NOT FOR CONSTRUCTION. ANY CHANGES TO THIS DRAWING SHALL BE MADE BY THE DESIGNER.

Designed By	Program Mgr	XXX
Drawn By	Control Mgr	XXX
Checked By	Control Super	XXX
Project Mgr	Date	12/20/22

**PRELIMINARY
NOT FOR
CONSTRUCTION**

No.	Date	Description	Revision

REUSE OF DOCUMENTS: THIS DOCUMENT AND THE DATA AND DESIGNS INCORPORATED HEREIN, TOGETHER WITH ANY AND ALL RELATED TO THE RE-USE OF ANY PART OF THIS PROJECT, ARE HEREBY RELEASED TO THE PUBLIC BY THE PORTLAND WATER BUREAU. THE BUREAU AND DESIGNS INCORPORATED HEREIN, TOGETHER WITH ANY AND ALL RELATED TO THE RE-USE OF ANY PART OF THIS PROJECT, ARE HEREBY RELEASED TO THE PUBLIC BY THE PORTLAND WATER BUREAU. THE BUREAU AND DESIGNS INCORPORATED HEREIN, TOGETHER WITH ANY AND ALL RELATED TO THE RE-USE OF ANY PART OF THIS PROJECT, ARE HEREBY RELEASED TO THE PUBLIC BY THE PORTLAND WATER BUREAU. © 2022 PORTLAND WATER BUREAU. ALL RIGHTS RESERVED.