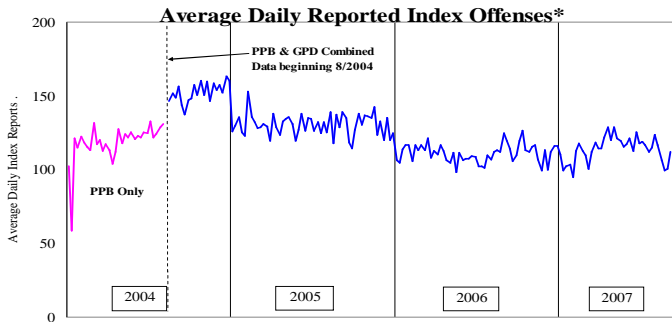


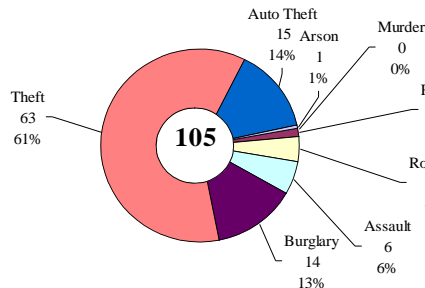
# SAFETY PRIORITY BRIEF: AUGUST 2007

## Multnomah County: Reported Index Offenses



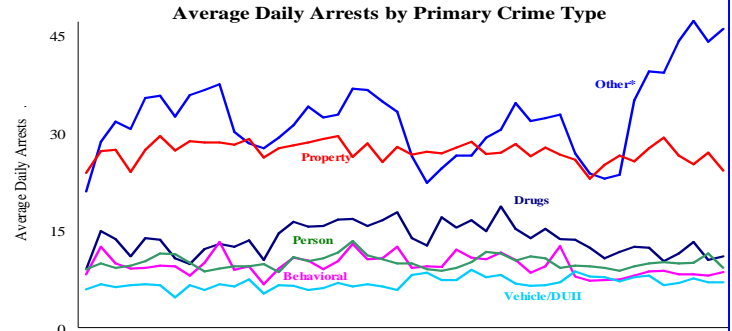
\*The graph reflects the combined weekly index offenses data from Portland Police Bureau (PPB) and Gresham Police Dept (GPD), beginning 8/2004 (line in blue). According to LEDS (2005) data PPB and GPD account for 95% of all offenses county-wide. Index offenses account for about half of all reported offenses.

### Average Daily Reported Index Offenses\*



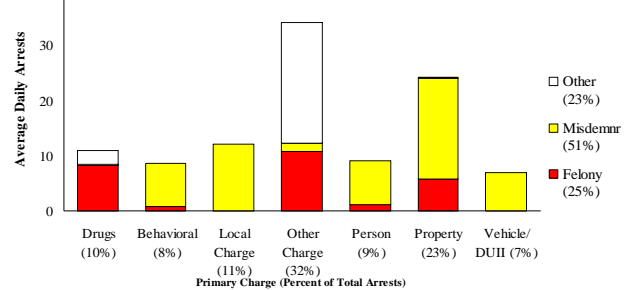
\*Portland and Gresham, combined 4-week moving average for the week ending 8-25-07.

## Multnomah County: Portland Arrests



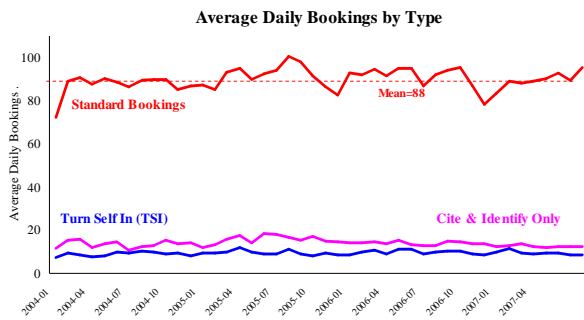
\*Other largely reflects fugitive/warrant charges and local ordinances (DFZ/PFZ). PPB data only, downloaded 9-26-2007.

### Average Daily Arrests\*: August (n=106)



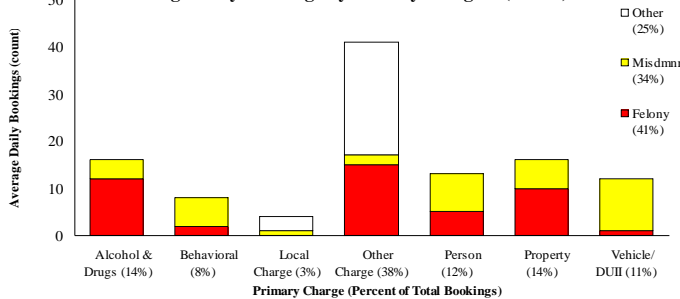
\*There were 3271 arrests in August. Local Charges include drug-free and prostitution free zone violations.

## Sheriff: Bookings



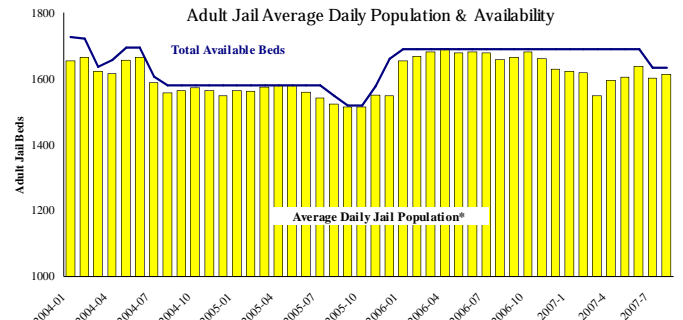
\*In-transit bookings are not reported herein and account for ~4% of all bookings. August's average length of stay (ALS) per booking was 16.55 days.

### Average Daily Bookings by Severity\*: August (n=108)



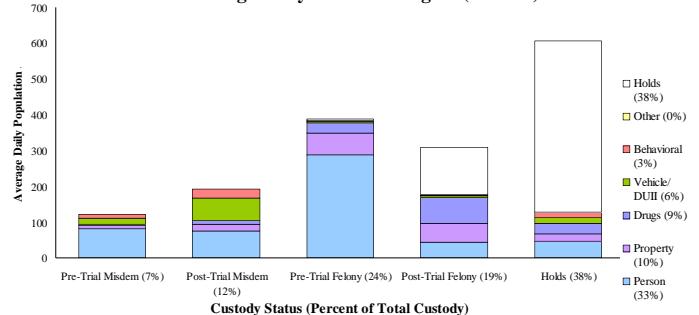
\*Excludes Cite & ID. Total of 3345 bookings (107.9/day) through 8/31/07. Corrections Health reported 556 psych-alerts (17.9/day) for the entire month of August.

## Sheriff: Custody- Adult Jail Beds



\*Excludes in-transit custody classifications. The MCSO reported 108 matrix releases for August 2007(3.5/day).

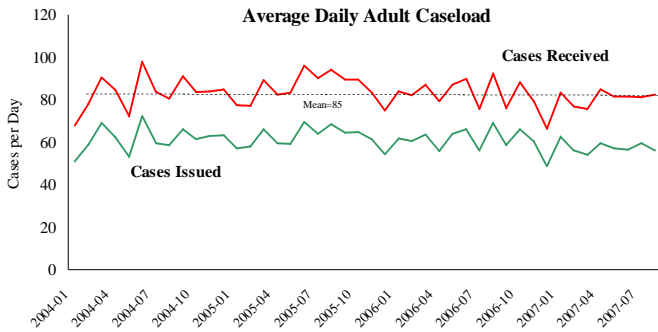
### Average Daily Bed Use: August (n=1612)



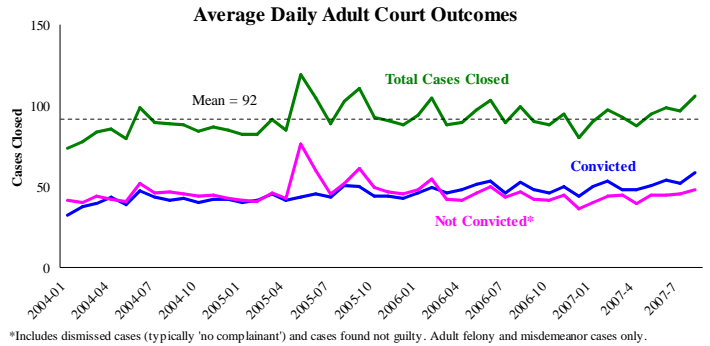
Average Daily Jail System Capacity=1633. Average Daily Population (ADP)=1612; there were 21 available beds on any given day.

**Notes:** The *Other* Arrest category increased for the first time since December; 44 to 46 per day average. The increase in the has been driven by *Bench Warrant Bail Jump* and *Fugitive* charges. The *Other* category for both Arrests and Bookings has consistently been the driver for any increase or decrease in the last eight months. Psych-Alerts (556) are at their highest level since October 2006. The Average Daily Jail Population increased to 1612 in August from 1602 as did Matrix Releases to 108 from 65 the previous month. The jail dorm closure reported last month was incorrect; it was in Multnomah County Detention Center, not Inverness.

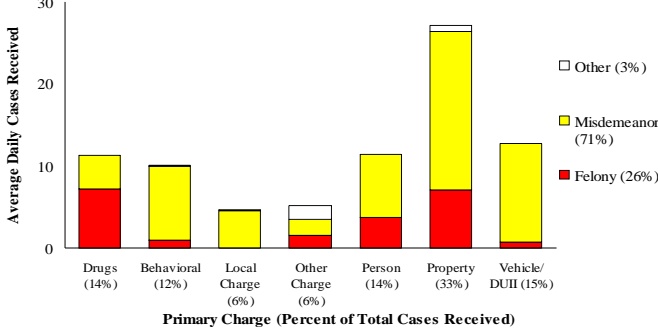
## District Attorney: Adult Caseload



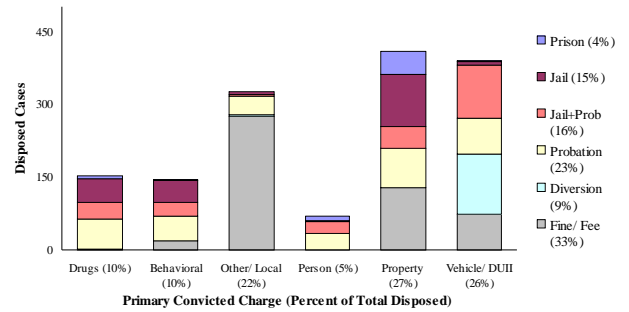
## Court Processes: Sentencing Outcomes



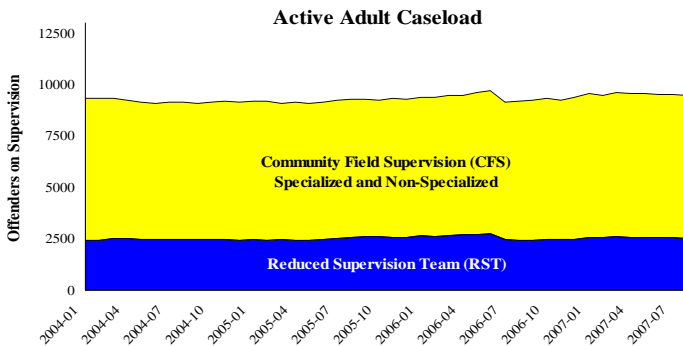
### Average Daily Received Cases\*: August (n=83)



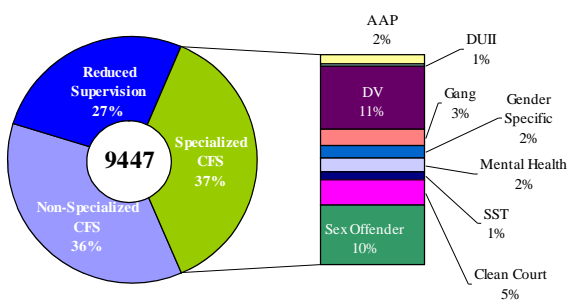
### Disposition Type by Primary Conviction\*: August 2007



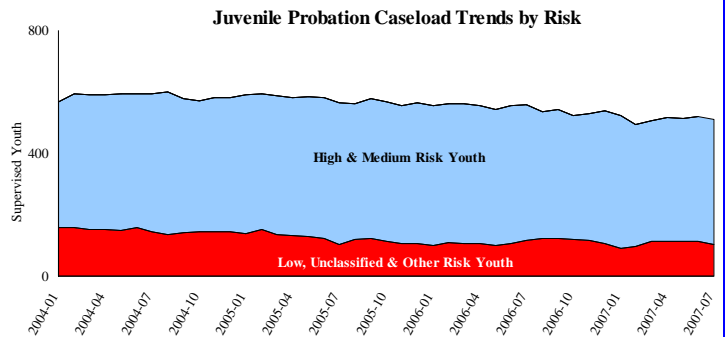
## Adult Community Supervision: Caseloads



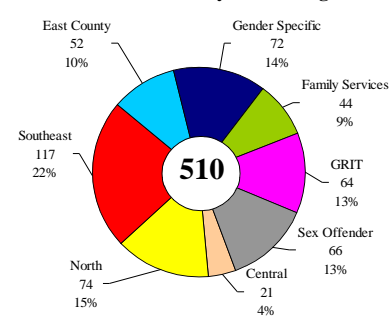
### Adult Active Caseload by Type\*: August 2007



## Juvenile Community Supervision: Caseloads



### Juvenile Justice Caseload by Unit\*: August 2007



**Notes:** The DA's Office number of cases pending review remained high in August at 353. Since December 2006 the *Other* charge severity (e.g. Infraction, None, Unknown, and Violation, about 3% to 4% of primary charges) in the District Attorney Caseload monthly detail was not being reported properly. The PS Briefs for the incorrect months will be revised and made available online. The Adult and Juvenile Community Supervision Caseloads continue to remain consistent.