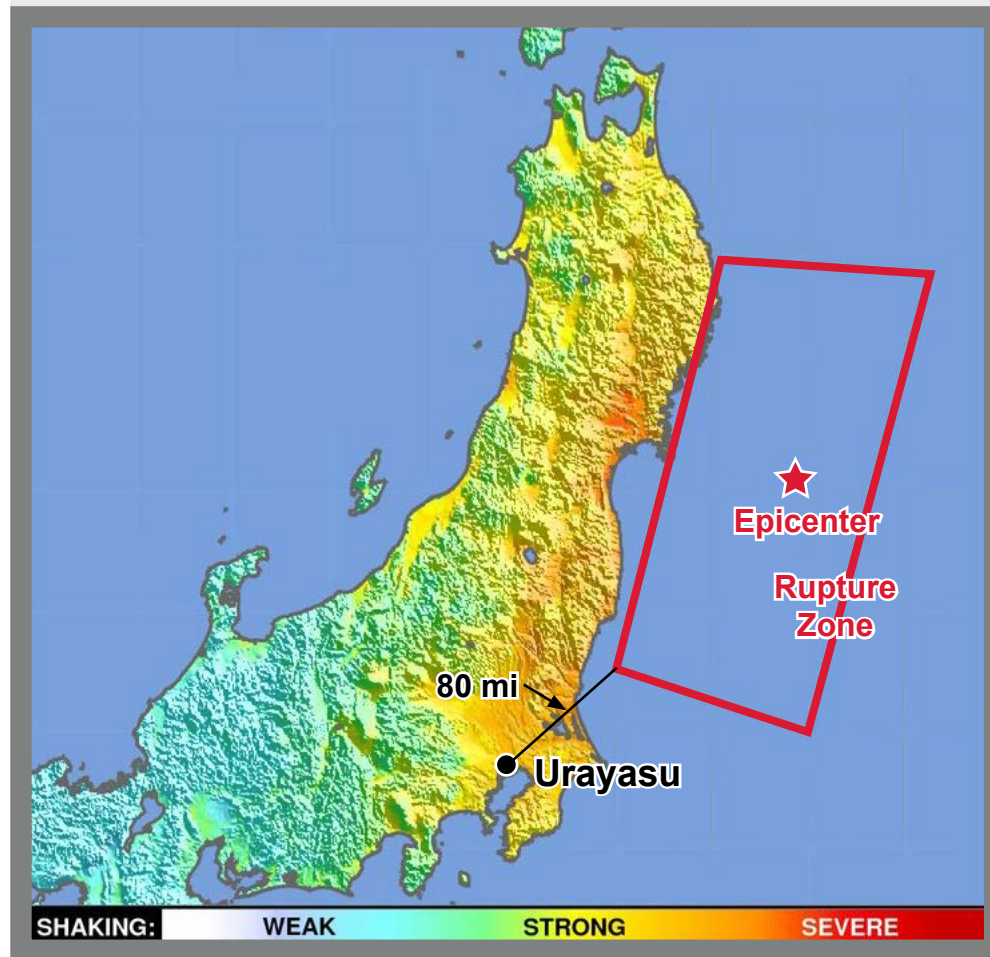


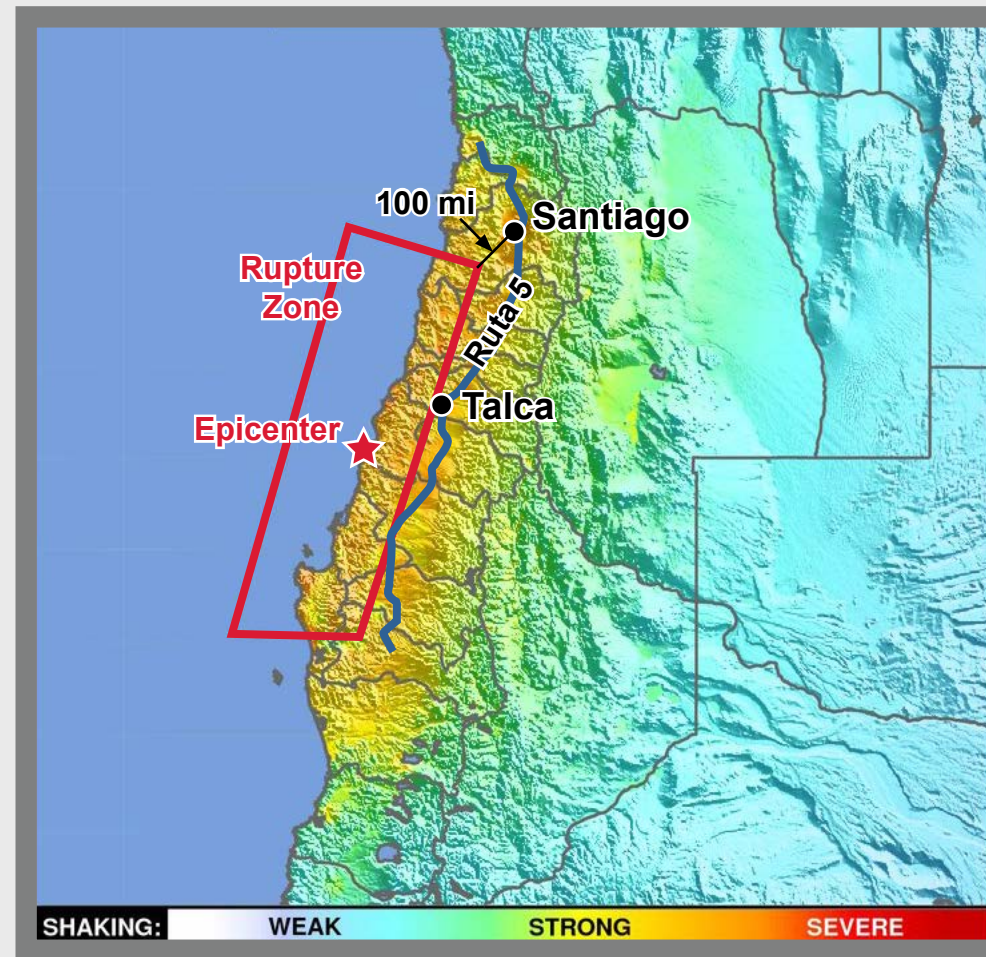
The maps below, “ShakeMaps” issued by the United States Geological Survey (USGS), provide color-coded information about the distribution and severity of shaking during past and projected major earthquakes. The colors portray the severity of shaking, and thus the potential for damage. Two recent earthquakes are shown that have similarities with the projected Cascadia earthquake in terms of magnitude and distance of the rupture zone from major population centers. The rupture zone is the area around the earthquake fault line where the greatest energy is released.

**JAPAN**



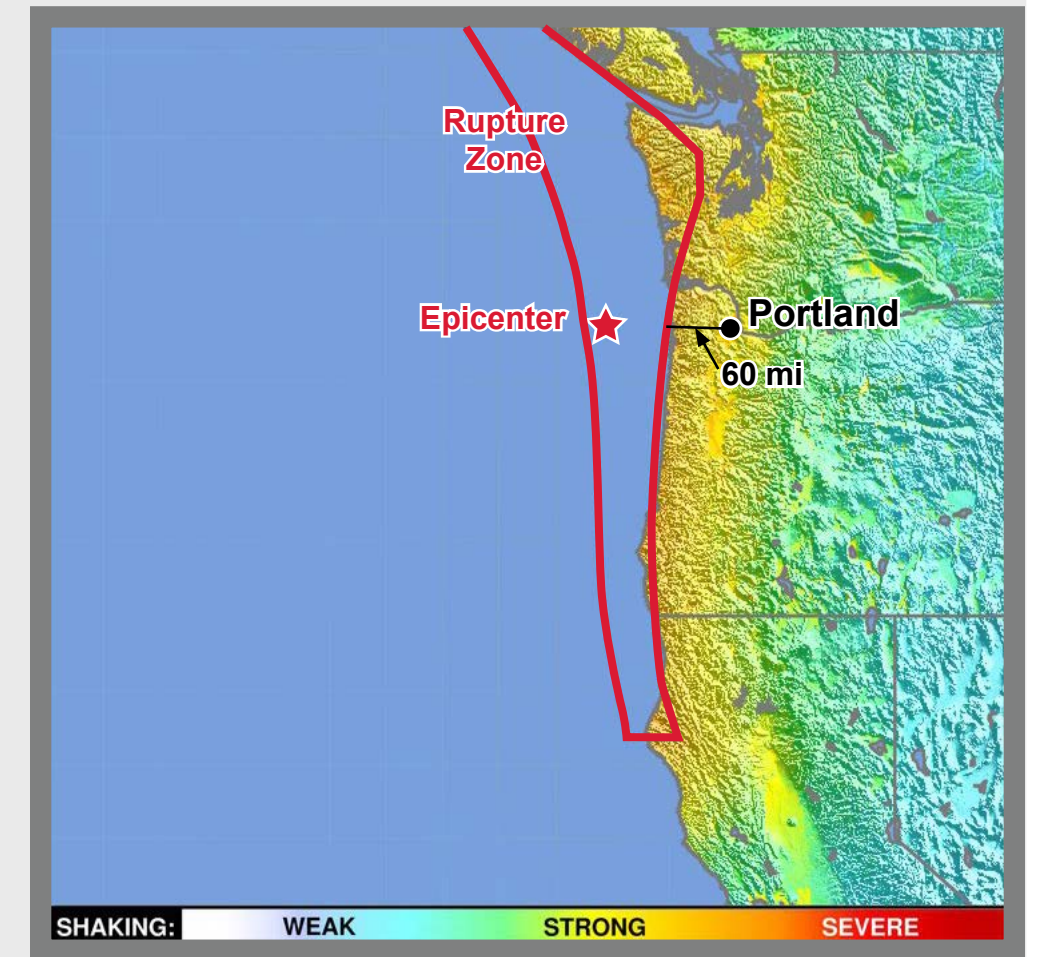
Tohoku-Oki Magnitude 9.0 Earthquake  
March 11, 2011

**CHILE**



Maule Magnitude 8.8 Earthquake  
February 27, 2010

**OREGON**



Projected Cascadia Magnitude 9.0 Earthquake  
Scenario

**Urayasu**  
(approx. 80 miles from rupture zone)



Collapsed bridge and damaged roadways

**Santiago, Chile**  
(approx. 100 miles from rupture zone)



Collapsed bridge



Remnants of collapsed bridge

**Ruta 5 near Talca, Chile**  
(near edge of rupture zone)



Damaged overpass approach



Damaged bridge south of Talca



Collapsed bridge near Camarico