



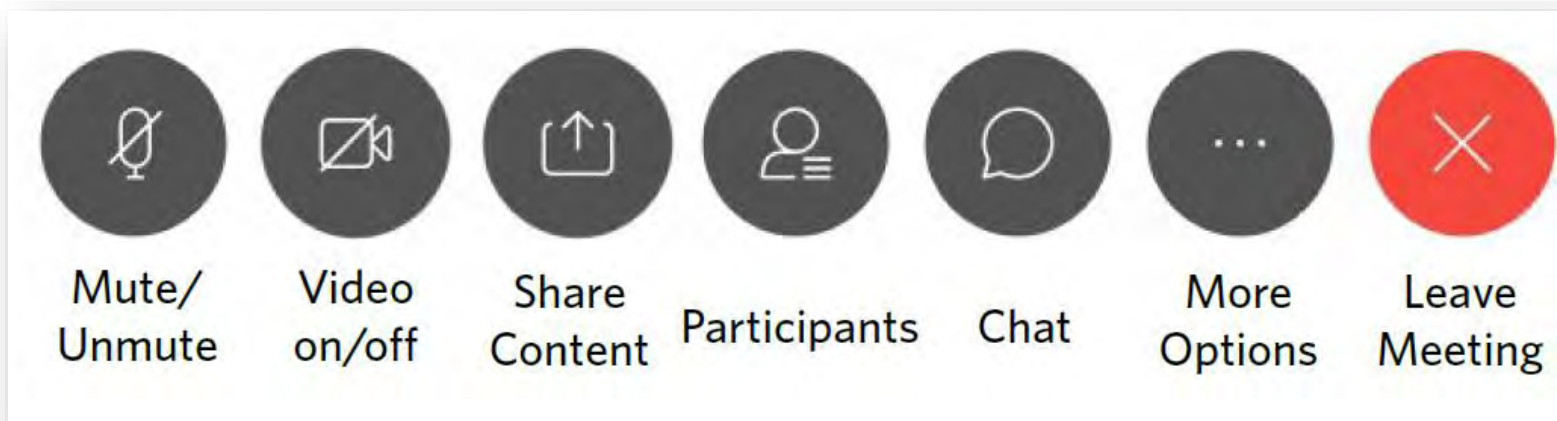
# Community Task Force

*Join meeting via WebEx link  
in calendar invite*

Department of Community Services  
Transportation Division  
May 18, 2020

# Meeting Protocols

## Using WebEx participation features



*For WebEx tech support call or email Liz Stoppelman:*

*(916) 200-5123*

*Liz.Stoppelman@hdrinc.com*

# Meeting Objective

Review and discuss scoring results of the alternatives evaluation and make recommendation on:

- Preferred bridge alternative

including

- Traffic option during construction



# Agenda

1. Welcome, Introductions & Housekeeping
2. Public Comment
3. Project Update
4. Scoring Process & Results
  1. Bridge Alternatives
  2. Traffic Options
  3. CTF Discussion & Recommendation
5. Next Steps & Closing Remarks



# Introductions and Roll Call

- **Art Graves**, Multnomah County Bike and Pedestrian Citizen Advisory Committee
- **Cameron Hunt**, Portland Spirit
- **Dan Lenzen**, Old Town Community Association
- **Ed Wortman**, Community Member
- **Frederick Cooper**, Laurelhurst Neighborhood Emergency Team
- **Gabe Rahe**, Burnside Skate Park
- **Howie Bierbaum**, Portland Saturday Market
- **Jackie Tate**, Community Member
- **Paul Leitman**, Oregon Walks
- **Jennifer Stein**, Central City Concern
- **Robert McDonald**, American Medical Response
- **Marie Dodds**, AAA of Oregon
- **Kiley Wilson**, Portland Business Alliance
- **Neil Jensen**, Gresham Area Chamber of Commerce
- **Peter Finley Fry**, Central Eastside Industrial Council
- **Sharon Wood Wortman**, Community Member
- **Stella Funk Butler**, Coalition of Gresham Neighborhood Associations
- **Susan Lindsay**, Buckman Community Association
- **Tesia Eisenberg**, Mercy Corps
- **Timothy Desper**, Portland Rescue Mission
- **William Burgel**, Portland Freight Committee





# Project Update

## Timeline and Process

2019	2020												2021	
	JAN	FEB	MAR	APR	MAY	JUNE	JULY	AUG	SEPT	OCT	NOV	DEC	JAN	FEB
CTF		CTF CTF		CTF	CTF	CTF				CTF	CTF			
SASG			SASG	WORKSHOP	TAC	SASG				SASG				
COMMUNITY								COMMUNITY						COMMUNITY
PG										PG				

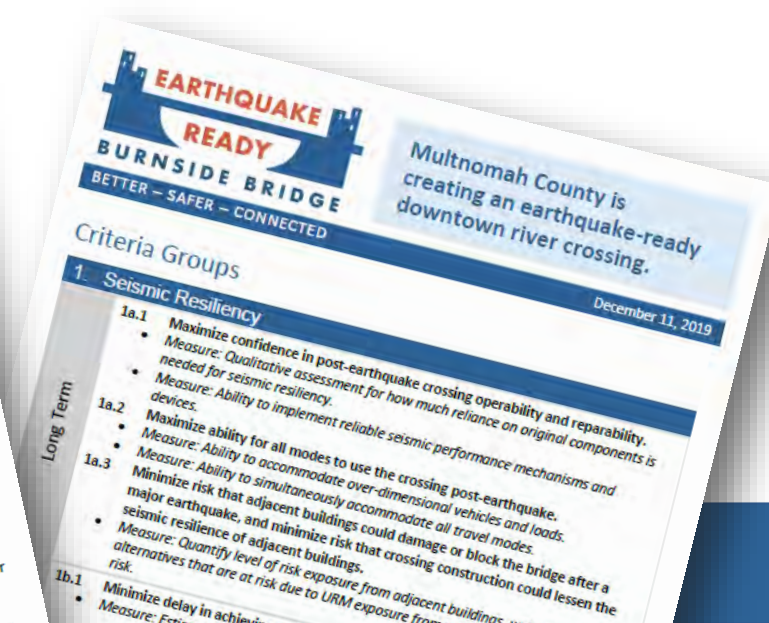
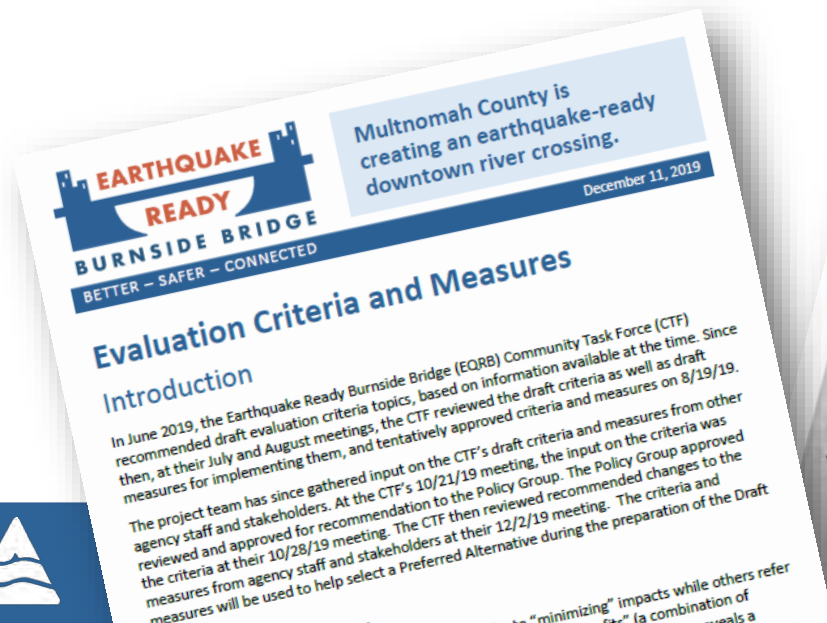
↑  
*We Are Here*

- Legend:**
- PA Preferred Alternative
  - DEIS Draft Environmental Impact Statement
  - CTF Community Task Force
  - SASG Senior Agency Staff Group
  - PG Policy Group
  - TAC Technical Advisory Committee



# Evaluation Process and Results

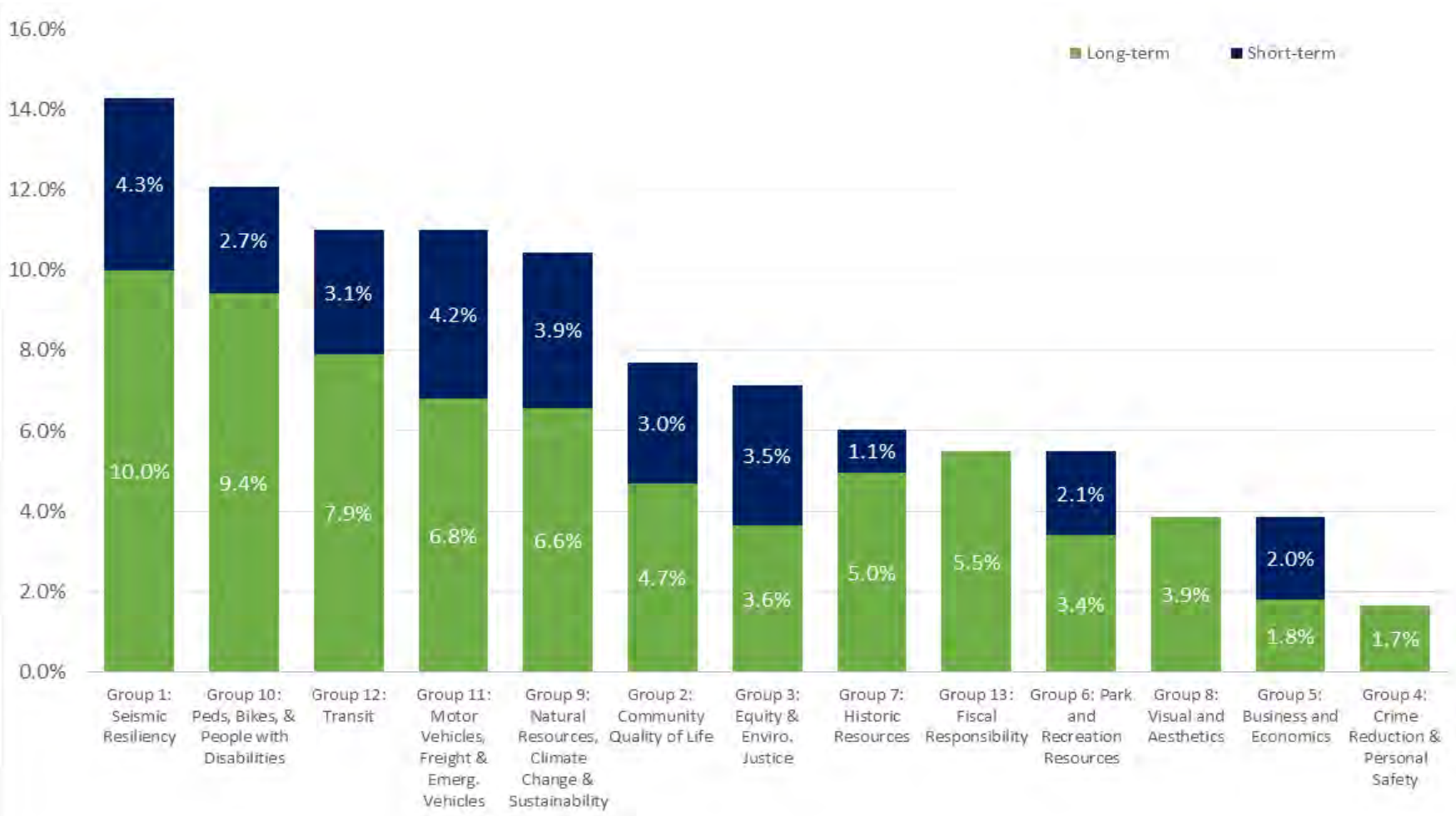
- Developed **criteria** to represent stakeholder values
- Developed **measures** to rate the performance of an alternative in delivering on those values
- Developed **value weights** to each of the criteria to reflect their relative importance
- Calculated a score for each alternative based on **performance rating** developed by technical staff and **value weights** developed by CTF





# Evaluation Process and Results

## Community Task Force – Weightings Results



# Evaluation Process and Results

## Scoring Process

- Scoring matrix is a tool to help select the Preferred Alternative and traffic handling method during construction
- Rate **Long-term** and **Short-term** separately
- Get input from agencies on ratings definitions

**Step 1: Distribute the CTF weighting factors**

Group	Criteria	Total Weight Available	Points Available per Criteria	Points Available per Measure	Rate of Measure (Rate = 1, 3, or 5)	Measure Score (Points Available per Measure x Rate)	Total Criteria Score (Including a scaling factor of 20)
1. Seismic Resiliency	<b>1a.1: Maximize confidence in post-earthquake crossing operability and reparability.</b>	10%	0.033	0.017	1	0.017	0.301 x 20 = 6.02 pts
	• Measure: Ability to implement reliable seismic performance mechanisms and devices.			0.017	1	0.017	
	<b>1a.2: Maximize ability for all modes to use the crossing post-earthquake.</b>		0.033	0.017	5	0.083	
	• Measure: Ability to simultaneously accommodate all travel modes.			0.017	1	0.017	
	<b>1a.3: Minimize risk that adjacent buildings could damage or block the bridge after a major earthquake, and minimize risk that crossing construction could lessen the seismic resiliency of adjacent buildings.</b>		0.033	0.033	5	0.167	
• Measure: Quantify level of risk exposure from adjacent buildings, weighting those alternatives that are at risk due to URM exposure from adjacent buildings at a higher risk.							
<b>1b.1: Minimize delay in achieving a seismically resilient crossing.</b>	4.29%	0.0429	5	0.214	0.214 x 20 = 4.29 pts		

**Step 2: Rate each alternative (1, 3, or 5)**

**Step 3: Multiply measure pts x rating**  
 Example:  $0.0429 \times 5 = 0.214$

**Step 4: Add all measure scores and apply factor**  
 Example:  $(0.017 + 0.017 + 0.083 + 0.017 + 0.167) \times 20 = 6.02$

# Evaluation Process and Results



Reviewing evaluation scores and key highlights

### ALTERNATIVE 1: Enhanced Seismic Retrofit

**Description:** Upgrade of the existing bridge to meet current seismic standards. This includes a combination of retrofitting portions of the bridge and replacing others.

Total Score out of 100	
Full Bridge Closure	61
Temporary Bridge	53

Criteria Topic	Criteria Description	WE Weighting	Full Bridge Closure		Temporary Bridge	
			Rating	Criteria Topic Score	Rating	Criteria Topic Score
Seismic Resiliency	1a.1: Maximize confidence in post-earthquake crossing operability and reparability.	3.33	○	10.3 of 14 possible	○	8.6 of 14 possible
	1a.2: Maximize ability for all modes to use the crossing post-earthquake.	3.33	●			
	1a.3: Minimize risk that adjacent buildings could damage or block the bridge after a major earthquake, and minimize risk that crossing construction could lessen the seismic resilience of adjacent buildings.	3.33	●			
Community Quality of Life	1b.1: Minimize delay in achieving a seismically resilient crossing.	4.29	●	3.7 of 8 possible	○	2.5 of 8 possible
	2a.1: Minimize long-term noise and light/shadow impacts.	2.35	○			
Equity and Environmental Justice	2a.2: Minimize long-term impacts to community facilities and events under and near the bridge (e.g., Skatepark, Saturday Market, park festivals, parades, organized runs, etc.).	2.35	○	4.6 of 8 possible	●	4.6 of 8 possible
	2b.1: Minimize temporary impacts to community facilities and events under and near the bridge.	3.00	●			
	3a.1: Minimize temporary impacts to social service providers.	1.21	●			
	3a.2: Maintain social service providers' long-term ability to provide current level of service and potential for enhancement.	1.21	●	0.3 of 8 possible	○	0.3 of 8 possible
	3a.3: Avoid disproportionate adverse impacts to vulnerable and Environmental Justice communities.	1.17	○			
	3b.1: Minimize temporary impacts to social service providers.	1.17	○			
	3b.2: Minimize temporary disproportionate adverse impacts to vulnerable and Environmental Justice communities.	1.17	●		●	
	3b.3: Ensure that design and construction approach allow ample opportunities for DBE firms to be involved in the construction/procurement process.	1.17	●			

### NEPA Evaluation Criteria Rating Sheet

Criteria | Metrics | Series Date: May 7, 2022

Criteria	Metric	Alternative 1: Enhanced Seismic Retrofit			Alternative 2: In-Kind Replacement (Short Span)			Alternative 3: In-Kind Replacement (Long Span)		
		Rating	Score	Weight	Rating	Score	Weight	Rating	Score	Weight
Air Quality	1.1.1.1	●	2.00	0.20	●	2.00	0.20	●	2.00	0.20
	1.1.1.2	●	2.00	0.20	●	2.00	0.20	●	2.00	0.20
	1.1.1.3	●	2.00	0.20	●	2.00	0.20	●	2.00	0.20
	1.1.1.4	●	2.00	0.20	●	2.00	0.20	●	2.00	0.20
	1.1.1.5	●	2.00	0.20	●	2.00	0.20	●	2.00	0.20
	1.1.1.6	●	2.00	0.20	●	2.00	0.20	●	2.00	0.20
	1.1.1.7	●	2.00	0.20	●	2.00	0.20	●	2.00	0.20
	1.1.1.8	●	2.00	0.20	●	2.00	0.20	●	2.00	0.20
	1.1.1.9	●	2.00	0.20	●	2.00	0.20	●	2.00	0.20
	1.1.1.10	●	2.00	0.20	●	2.00	0.20	●	2.00	0.20

# Meeting Objective

Review and discuss scoring results of the alternatives evaluation and make recommendation on:

- Preferred bridge alternative

including

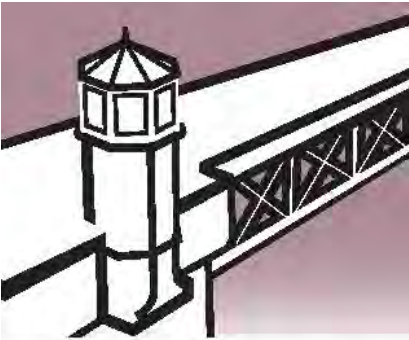
- Traffic option during construction



# Evaluation Process and Results



## Bridge Alternatives



**RETROFIT**



**REPLACEMENT  
SHORT SPAN**



**REPLACEMENT  
LONG SPAN**

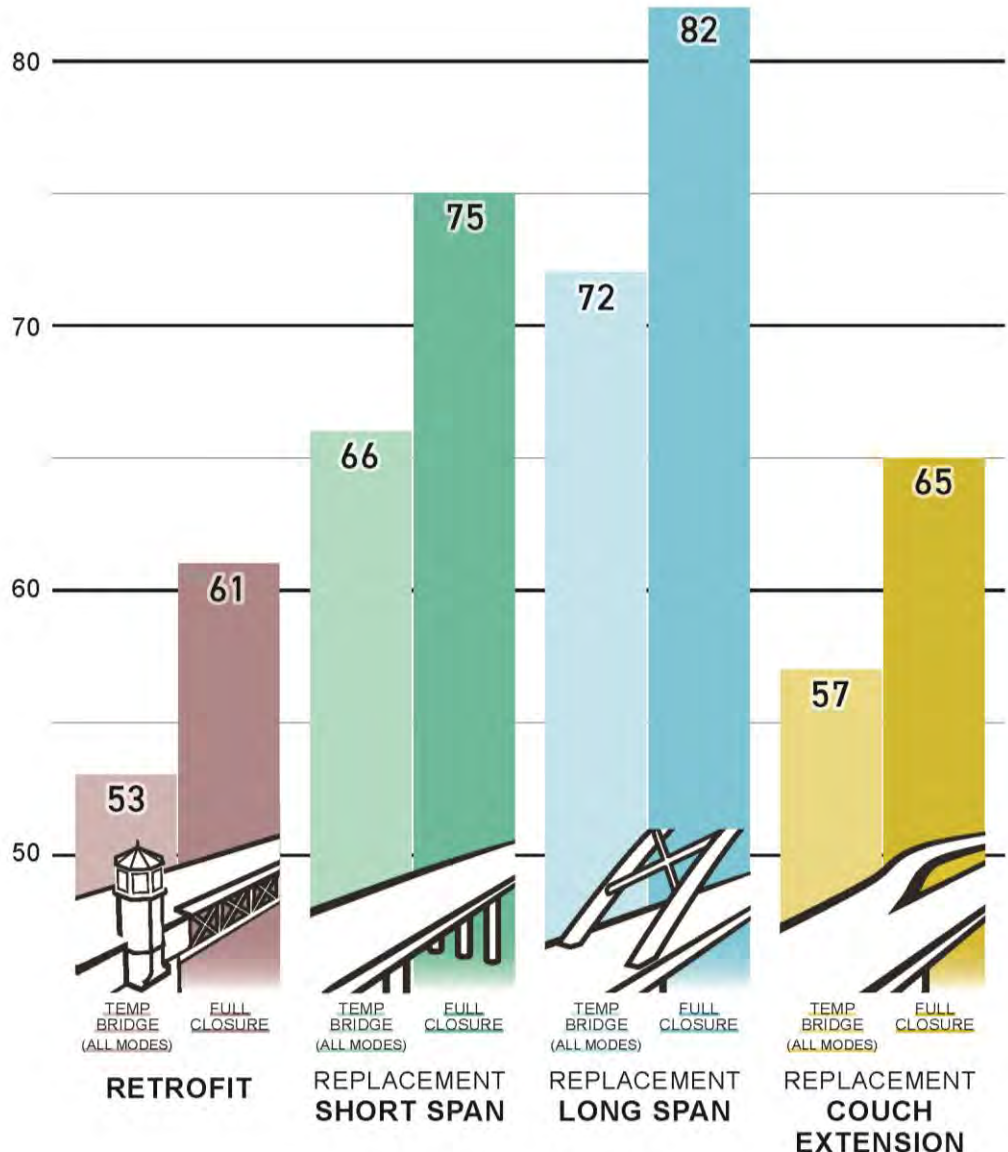


**REPLACEMENT  
COUCH  
EXTENSION**



# Evaluation Process and Results

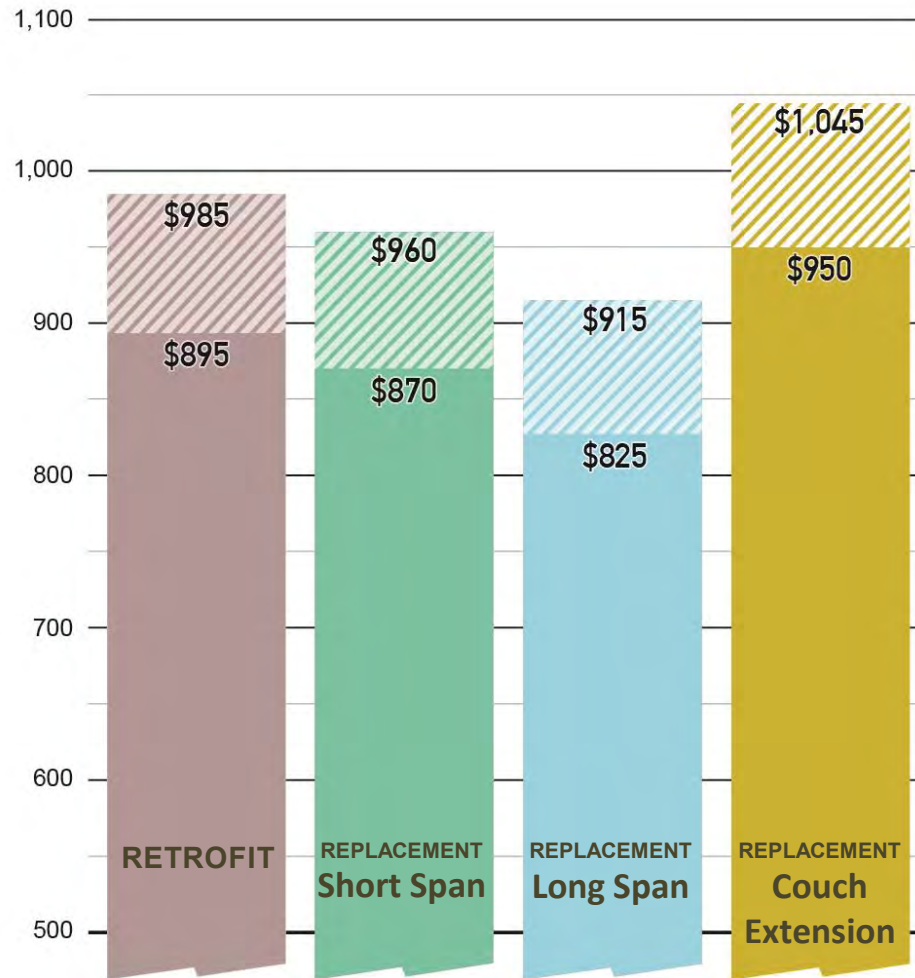
## Scoring Results



# Bridge Alternatives Highlights



# All Alternatives: Project Cost



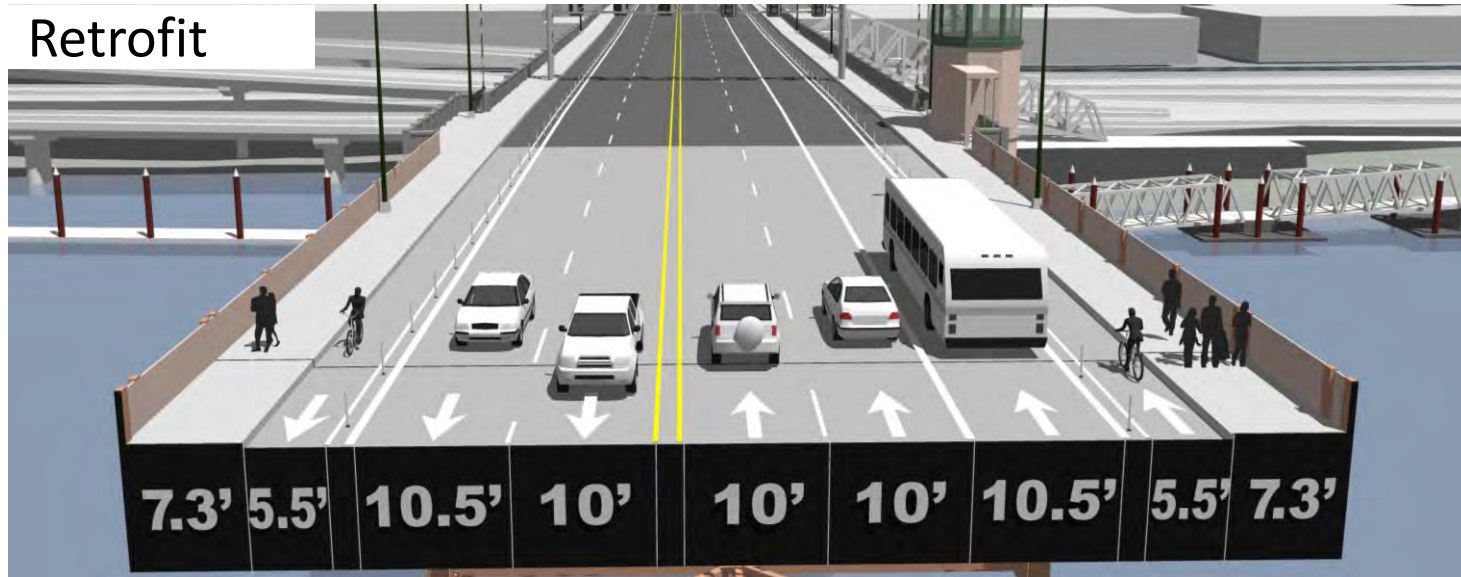
 = Add'l cost for Temporary Bridge During Construction



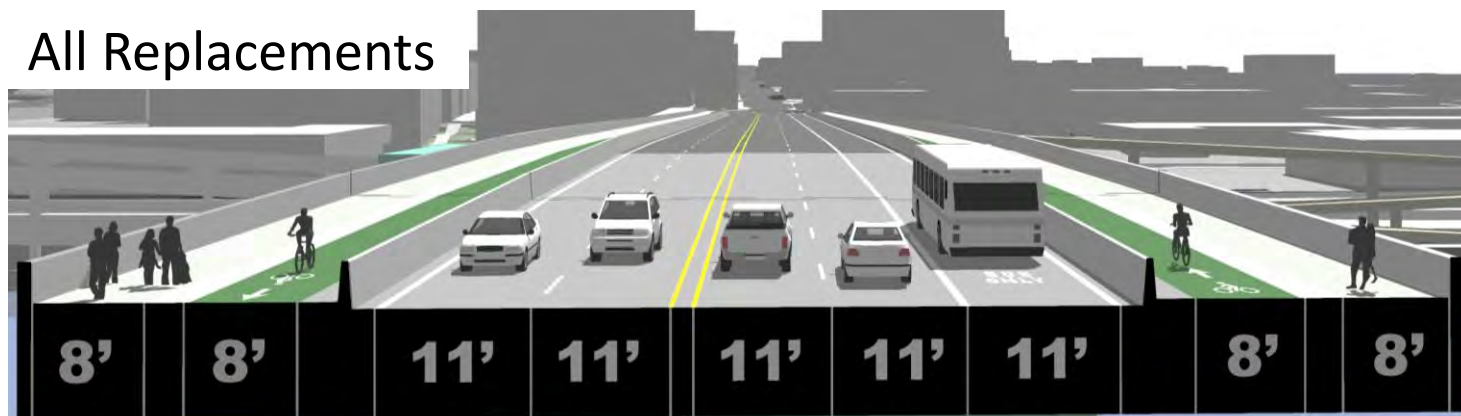


# All Alternatives: Cross Sections

## Retrofit

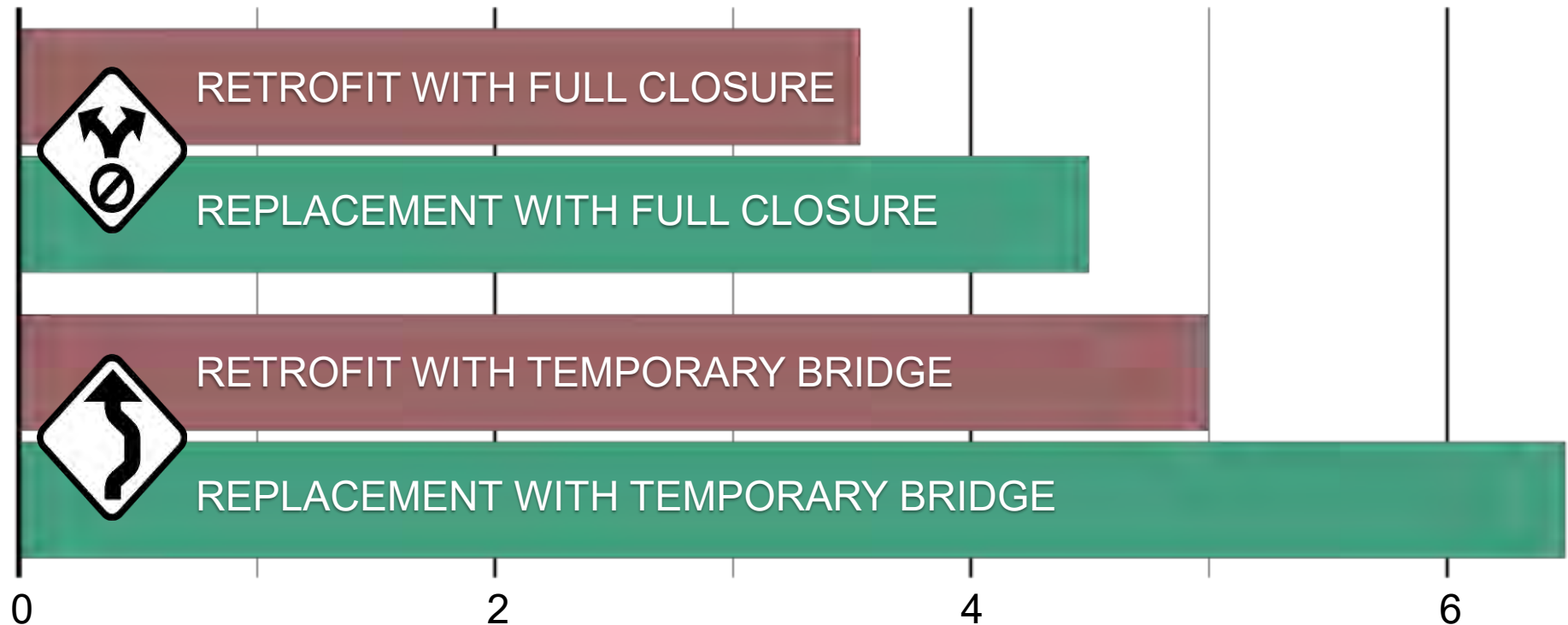


## All Replacements



# All Aits: Construction Timeline

## PROJECT DURATION (Years)





# Enhanced Seismic Retrofit





*View from southwest*



# Enhanced Seismic Retrofit



-  Bridge Supports
-  Geotechnical Hazard Zone

*View showing column layout and geotechnical hazard zone from south*



# Enhanced Seismic Retrofit

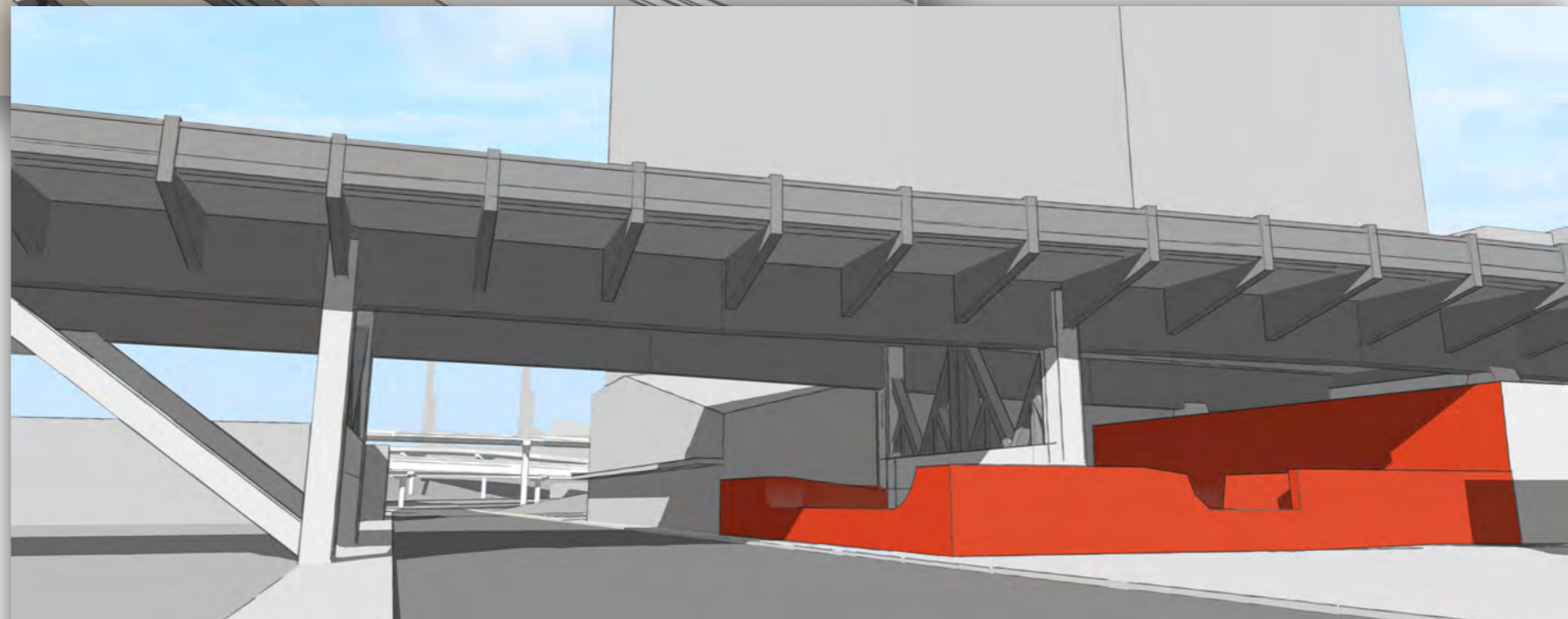
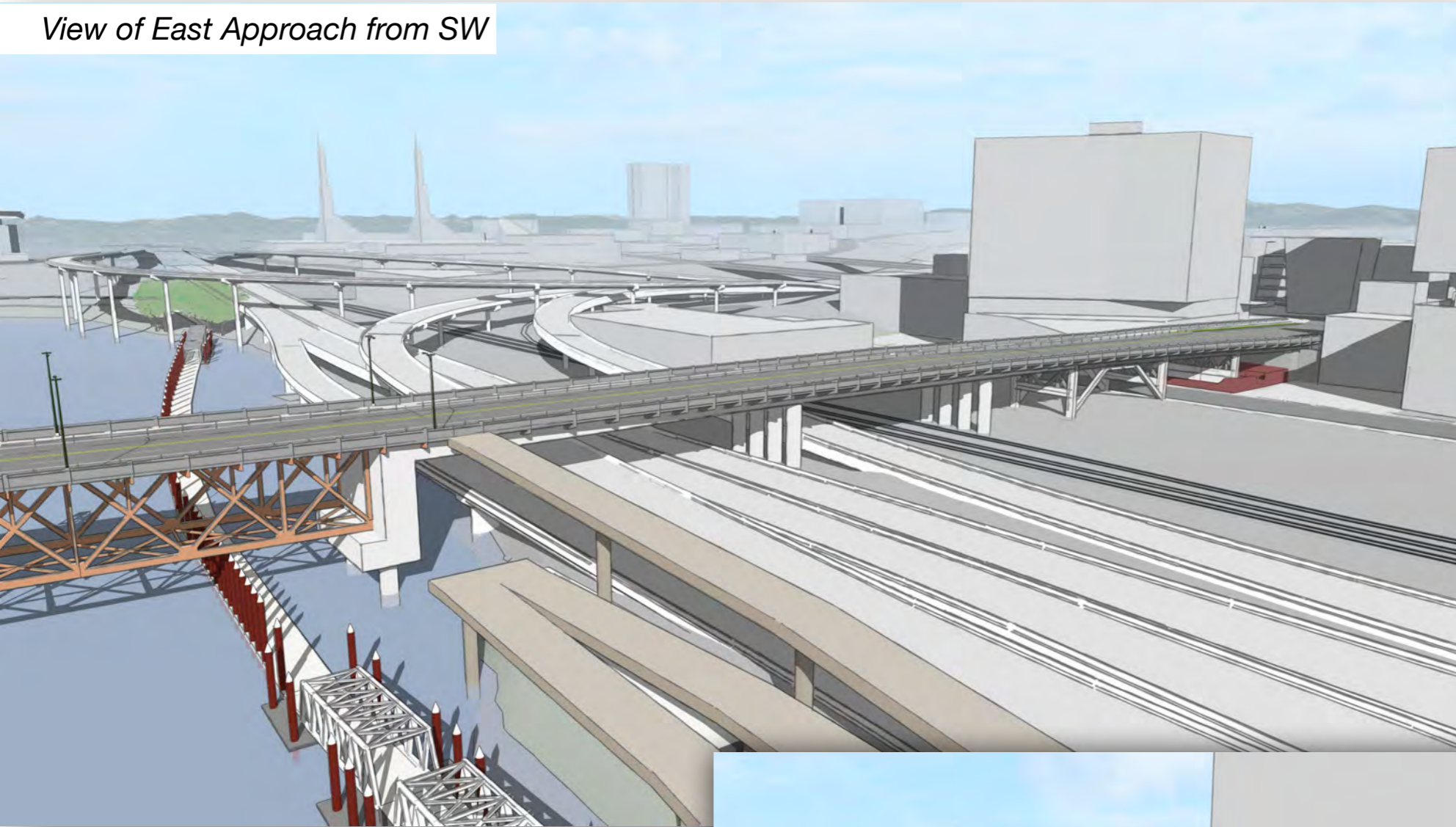


*Waterfront Park, Looking NE from Naito Pkwy*



# Enhanced Seismic Retrofit

*View of East Approach from SW*



*SE 2<sup>nd</sup> Ave, Looking North at Skatepark*

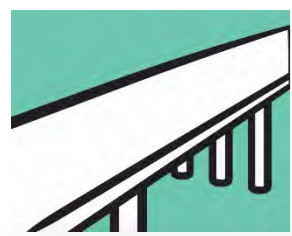


# Enhanced Seismic Retrofit

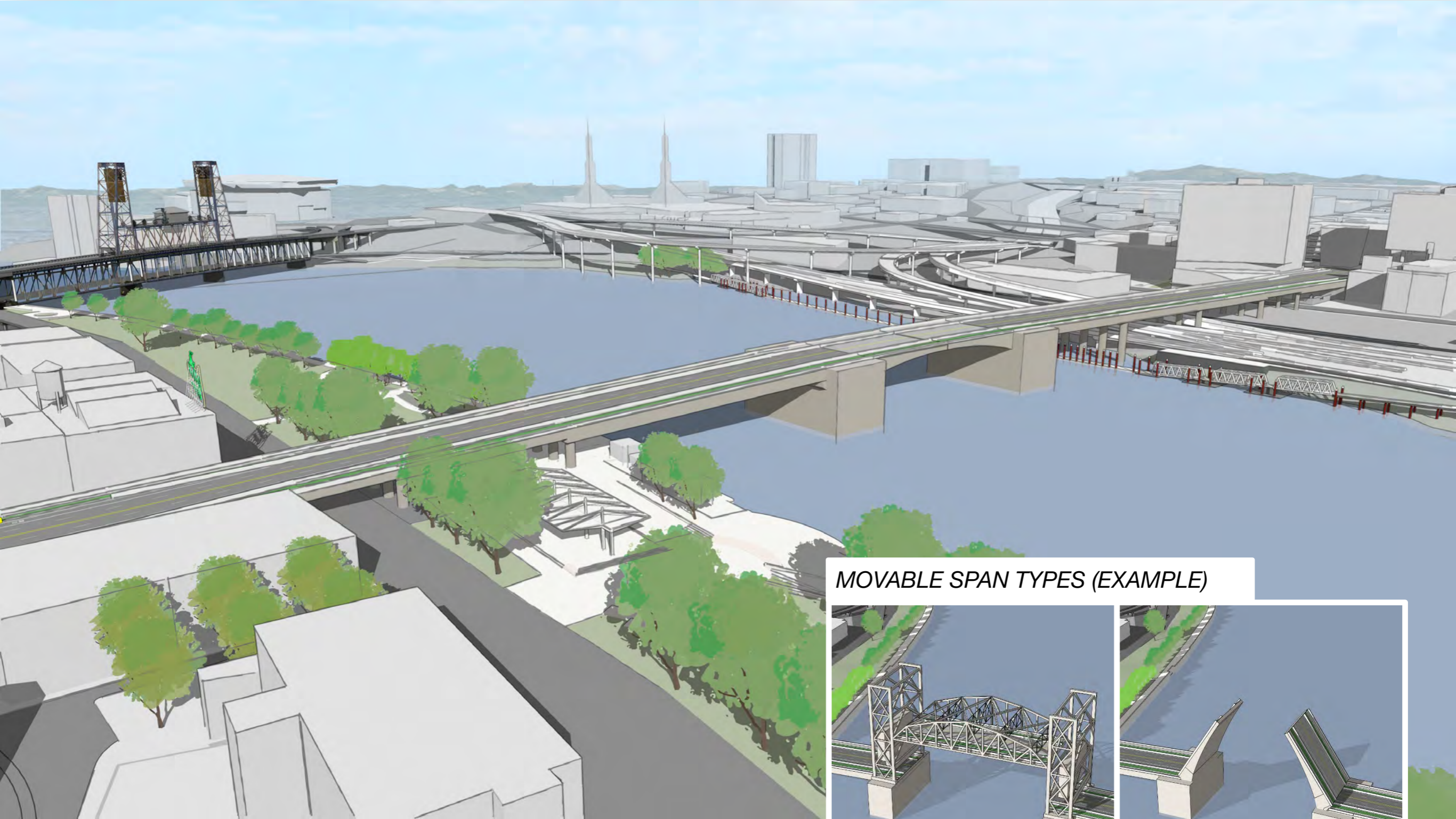
*Stag Sign and Big Pink, from south sidewalk of bridge*



*Stag Sign and Big Pink, from north sidewalk of bridge near midspan*



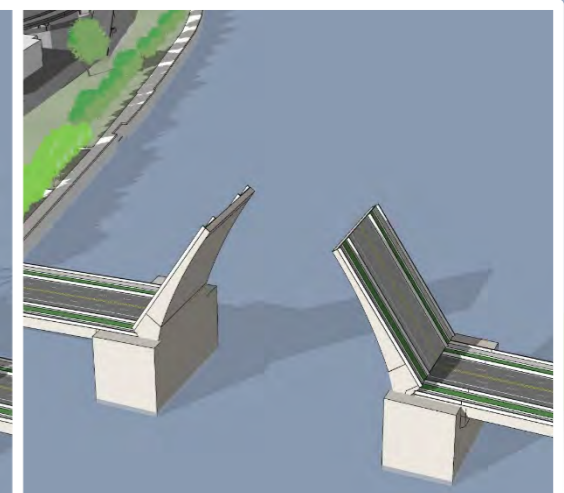
# Replacement: Short Span



## MOVABLE SPAN TYPES (EXAMPLE)



Lift



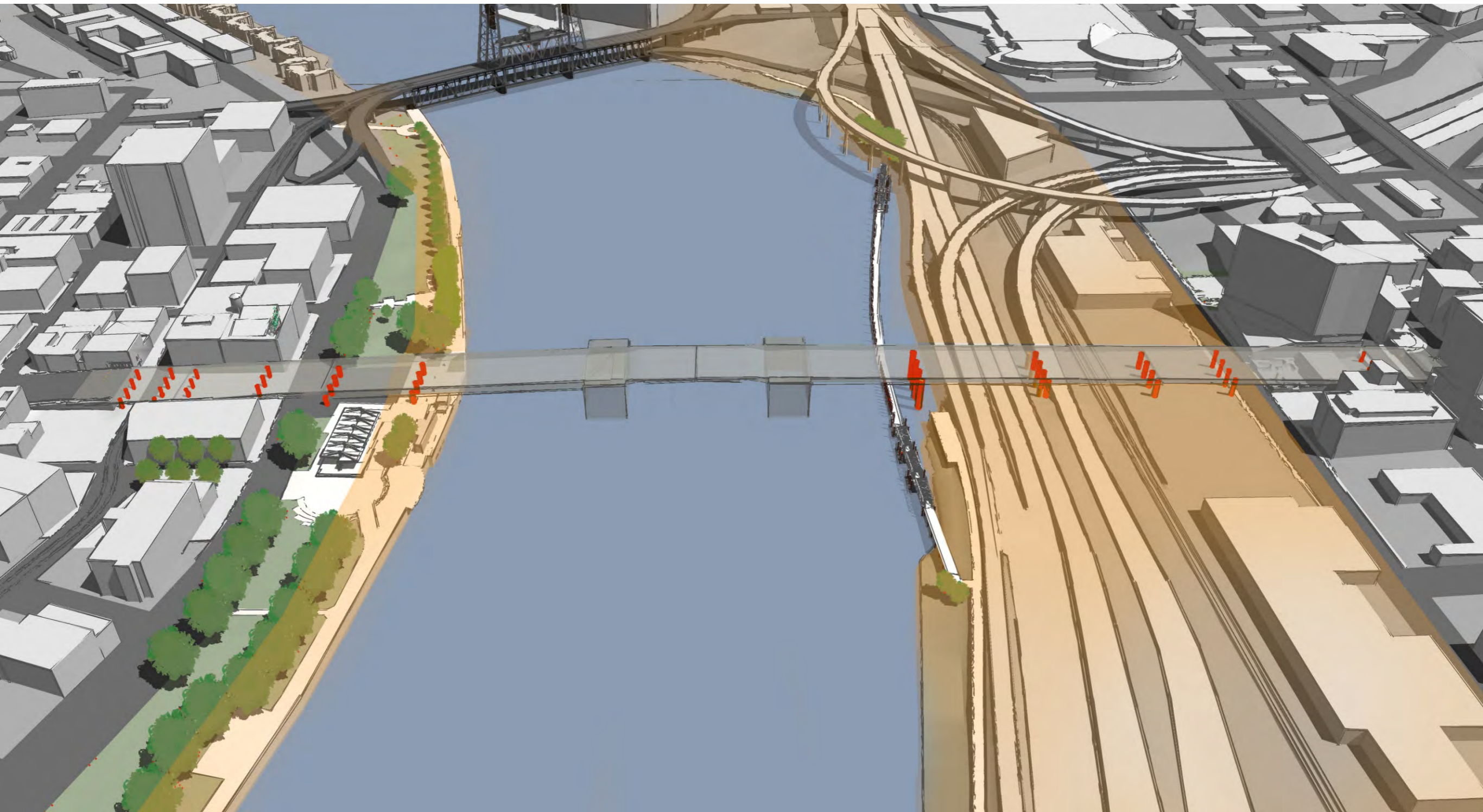
Bascule (shown above)



View from southwest



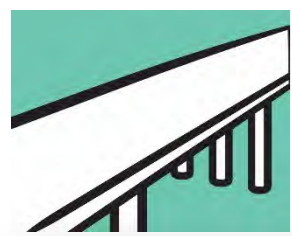


# Replacement: Short Span



-  Bridge Supports
-  Geotechnical Hazard Zone

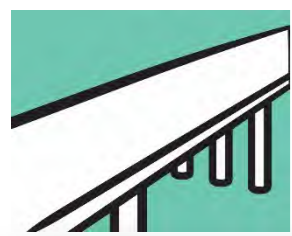
*View showing column layout and geotechnical hazard zone from south*



# Replacement: Short Span

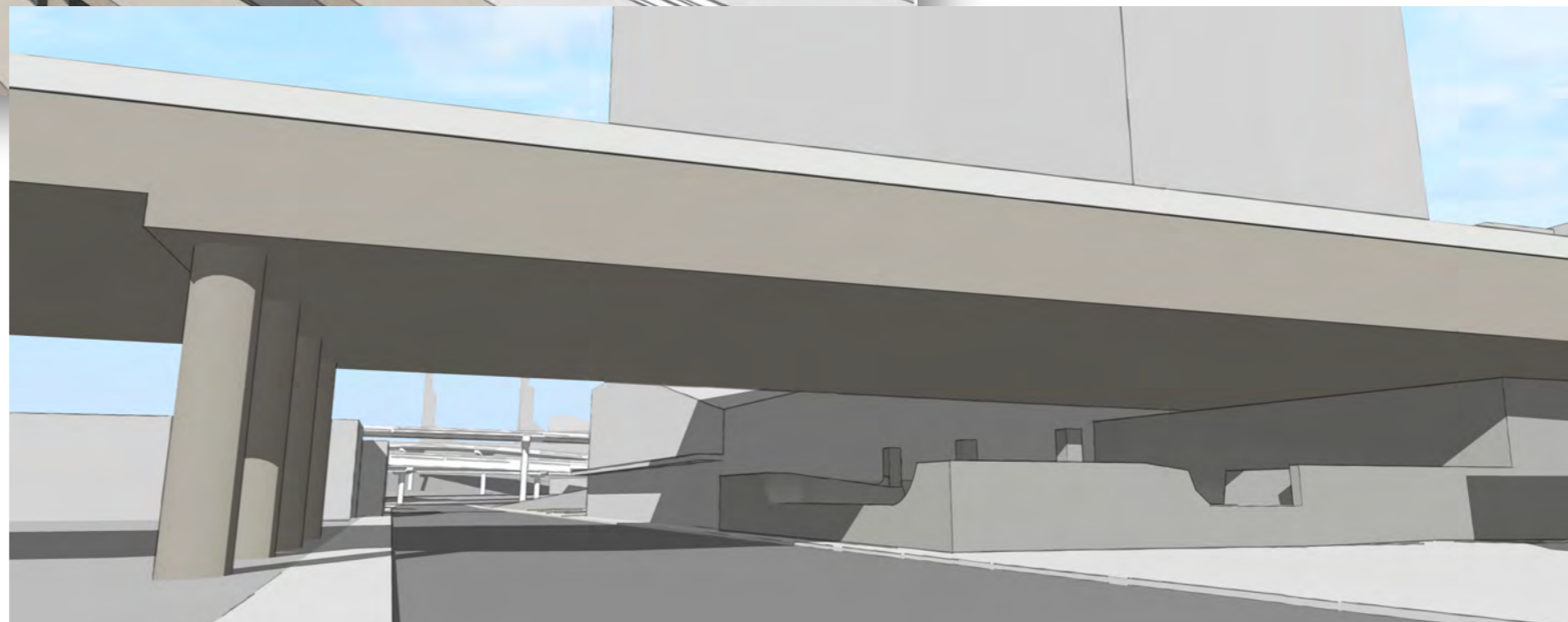
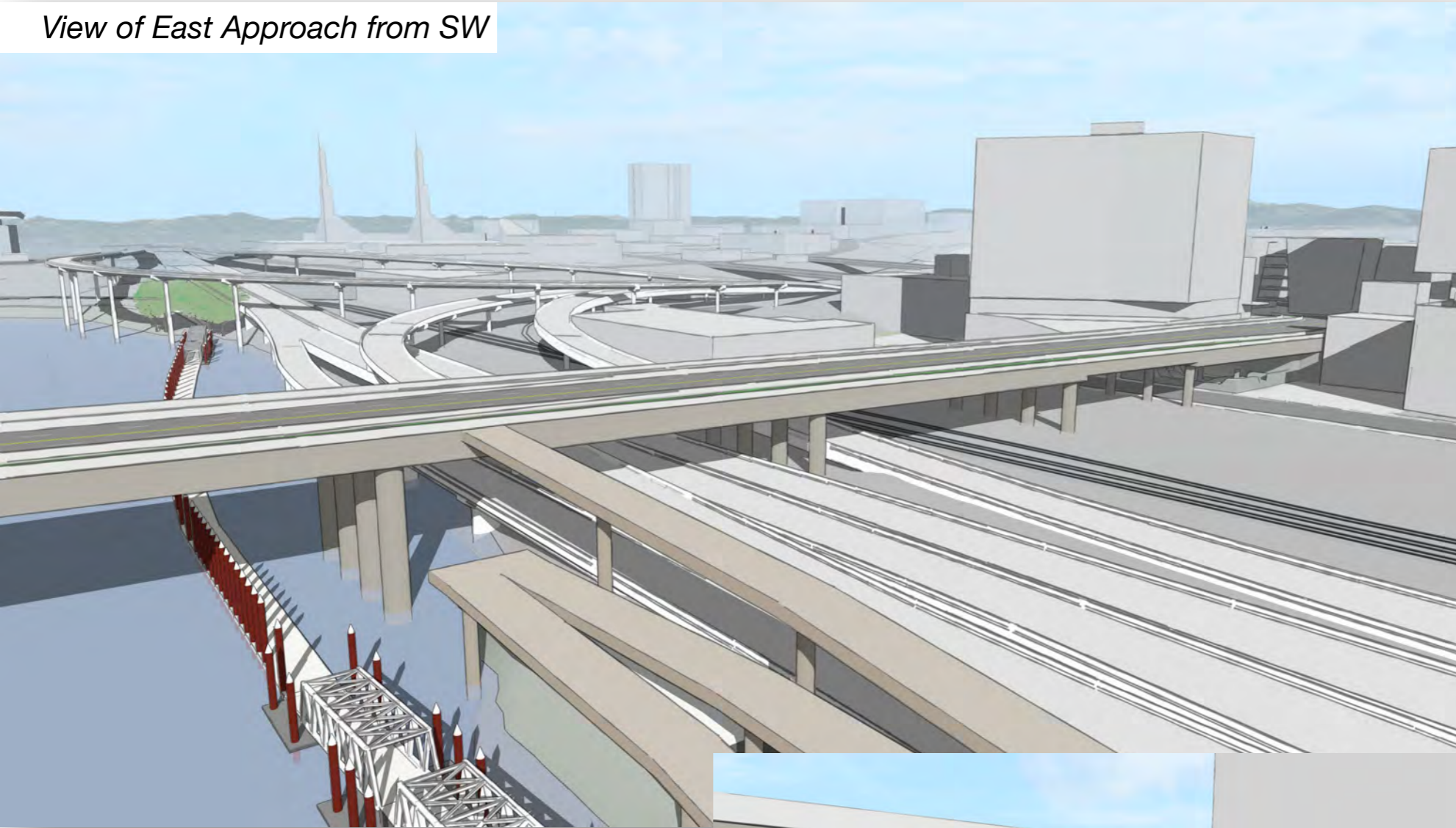


*Waterfront Park, Looking NE from Naito Pkwy*



# Replacement: Short Span

*View of East Approach from SW*



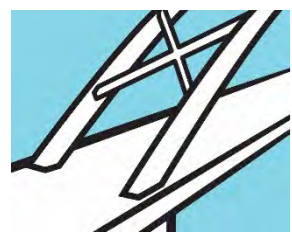
*SE 2<sup>nd</sup> Ave, Looking North at Skatepark*



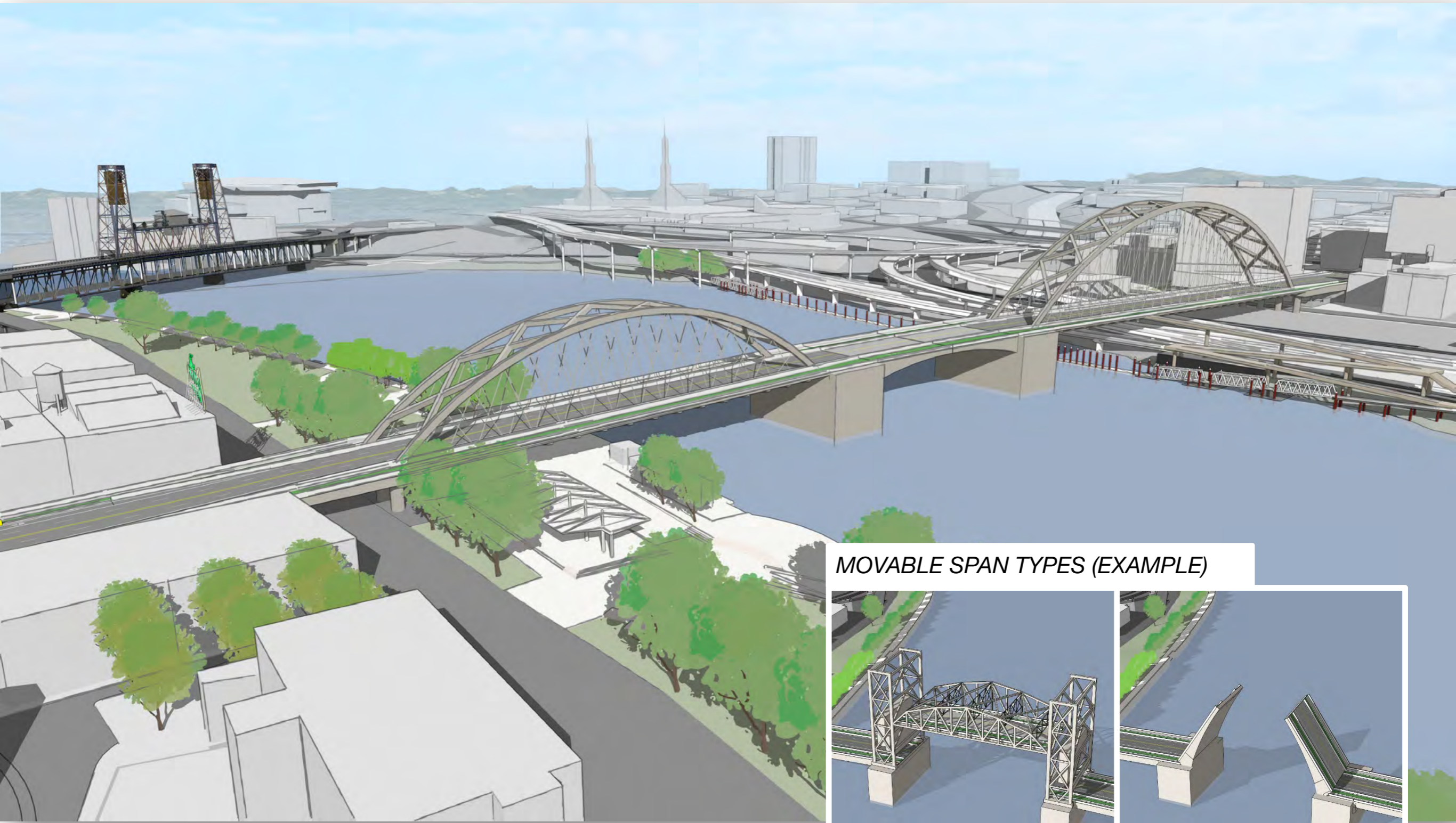
# Replacement: Short Span



*Stag Sign and Big Pink, from south sidewalk of bridge*



# Replacement: Long Span

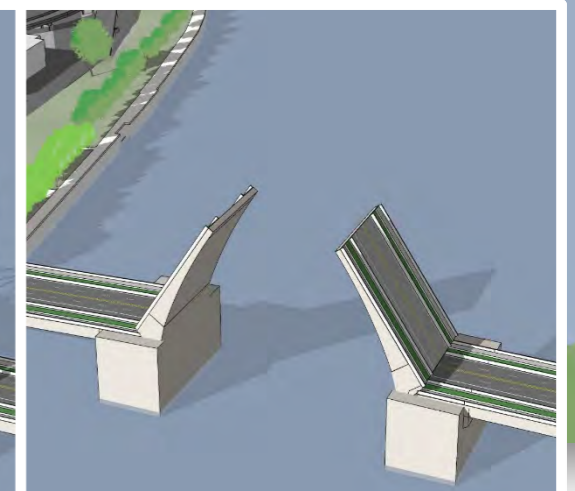


View from southwest (Arch Concept)

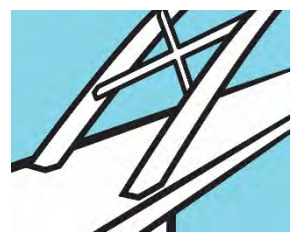
## MOVABLE SPAN TYPES (EXAMPLE)



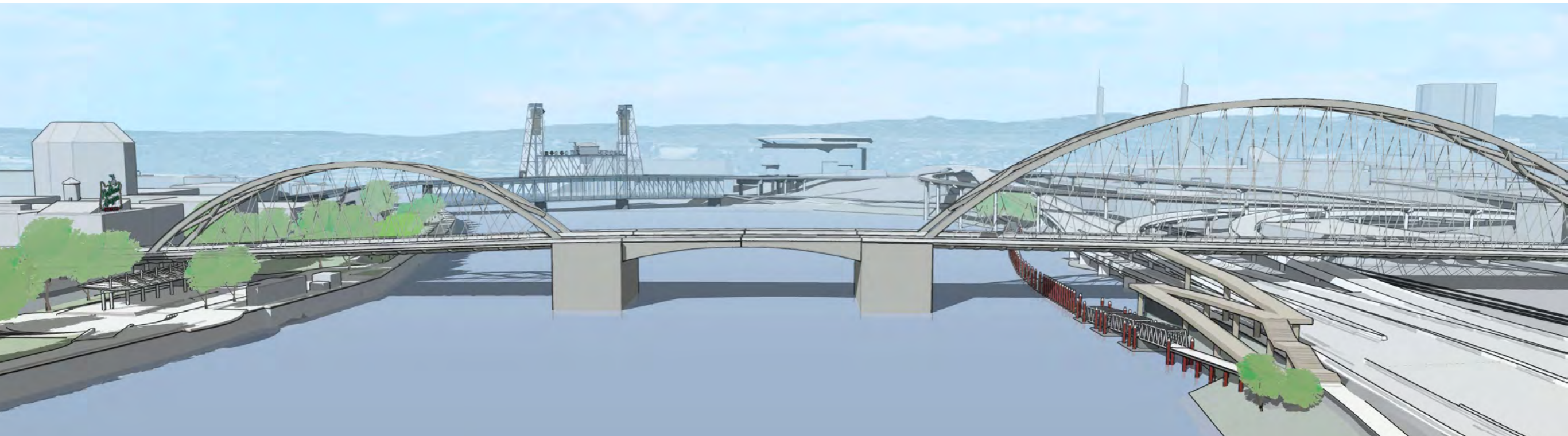
Lift



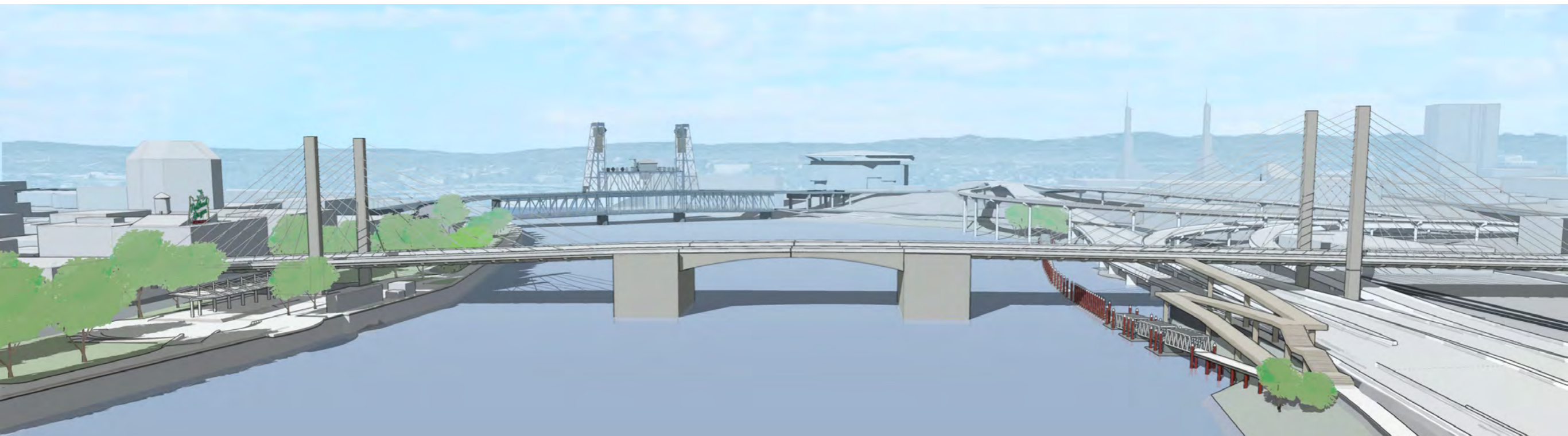
Bascule (shown above)



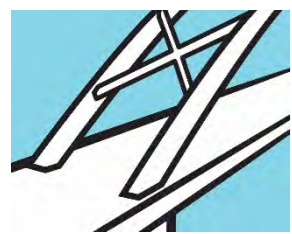
# Replacement: Long Span



*View from south (Arch Concept)*





*View from south (Cable Stayed Concept)*

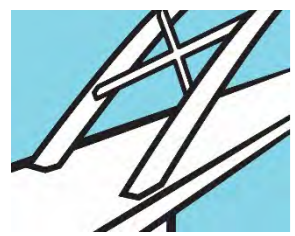


# Replacement: Long Span



-  Bridge Supports
-  Geotechnical Hazard Zone

*View showing column layout and geotechnical hazard zone from south*

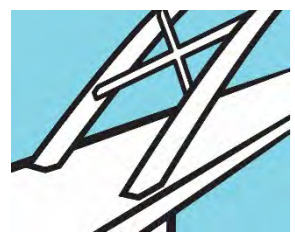


# Replacement: Long Span



*Waterfront Park, Looking NE from Naito Pkwy (Arch Concept)*

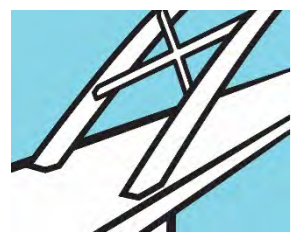




# Replacement: Long Span



*Waterfront Park, Looking NE from Naito Pkwy (Cable Stayed Concept)*



# Replacement: Long Span



*View from south sidewalk (Arch Concept)*



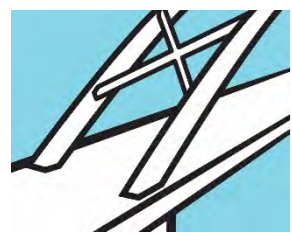
*View from south sidewalk (Cable Stayed Concept)*



*View from north sidewalk near midspan (Arch Concept)*

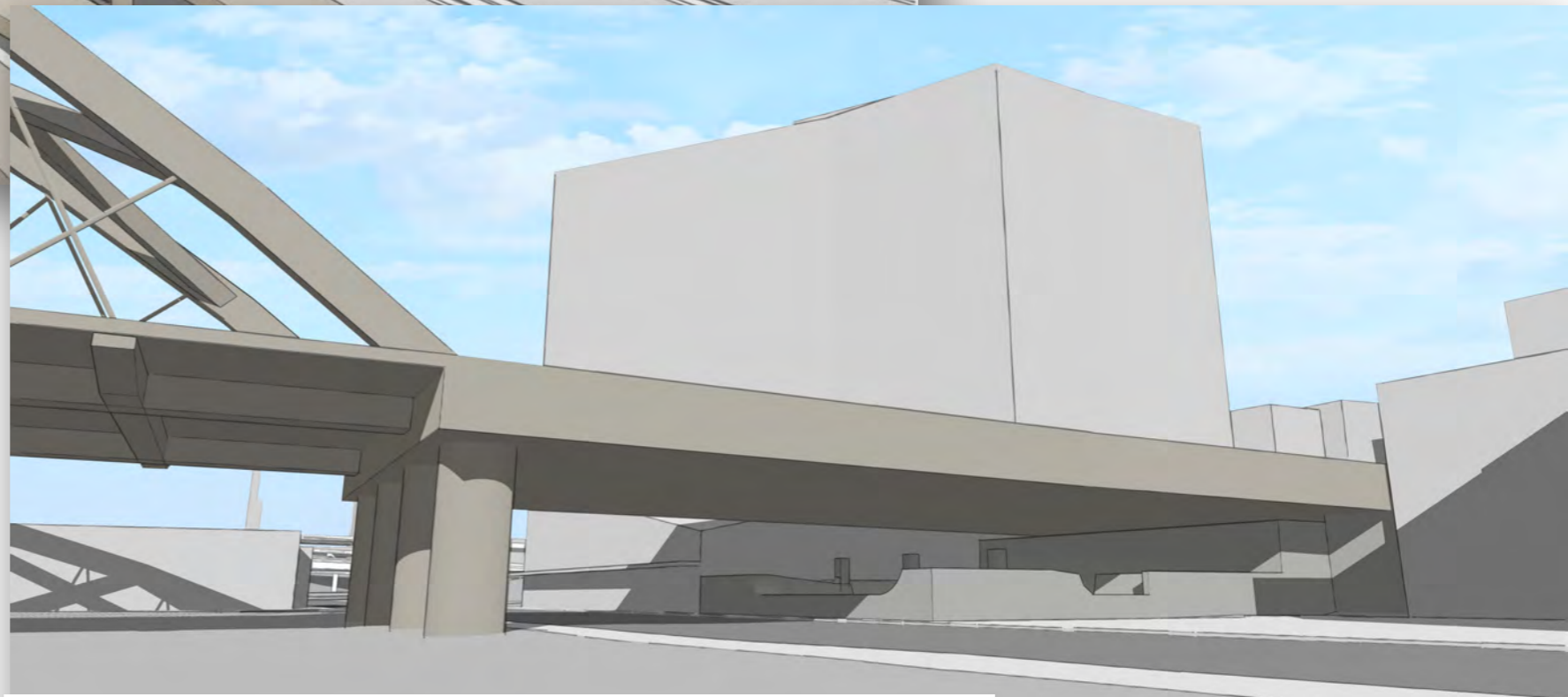
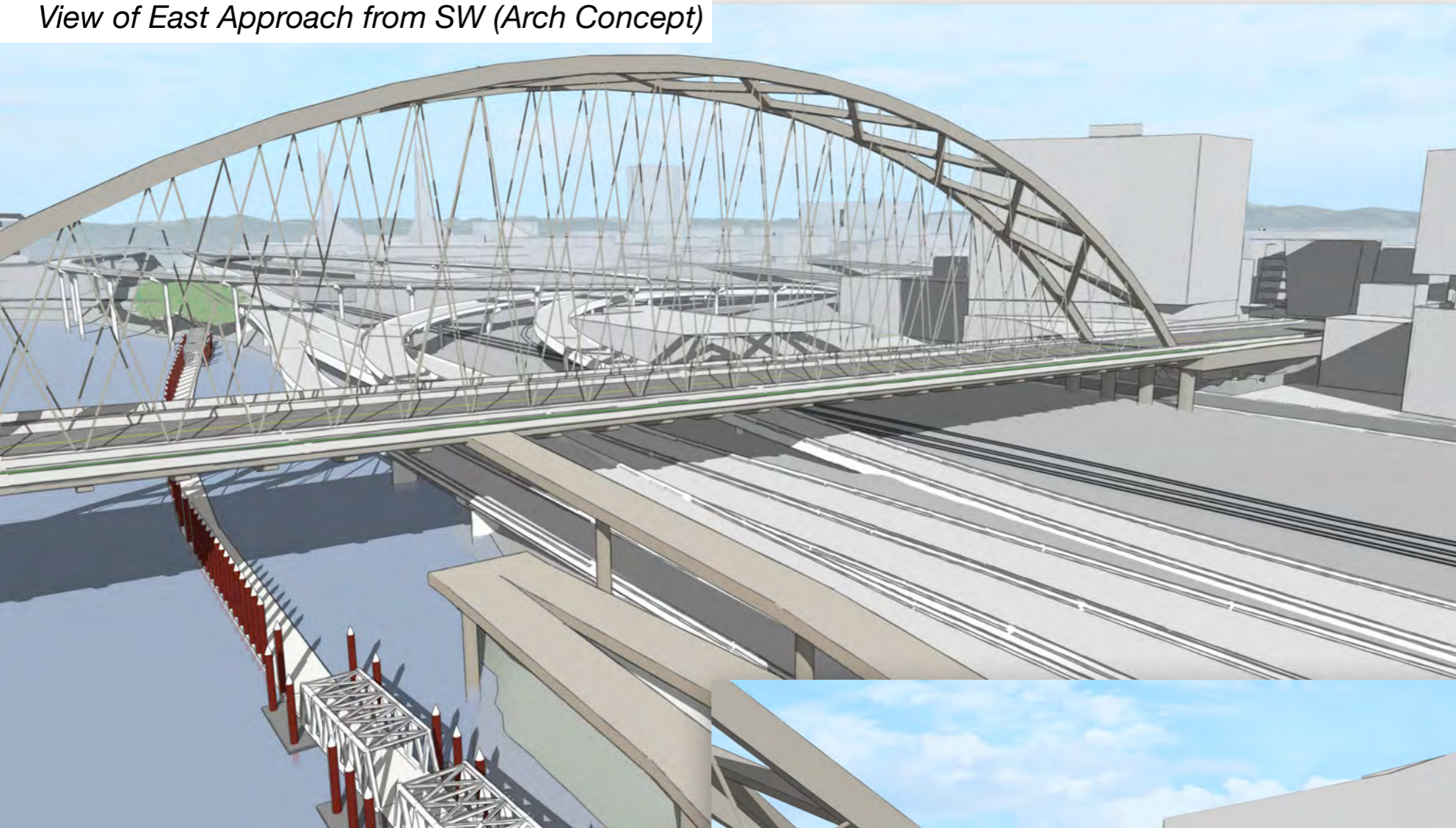


*View from north sidewalk near midspan (Cable Stayed Concept)*

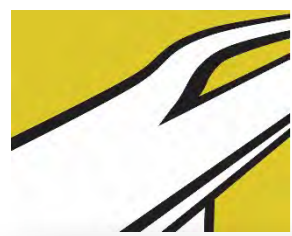


# Replacement: Long Span

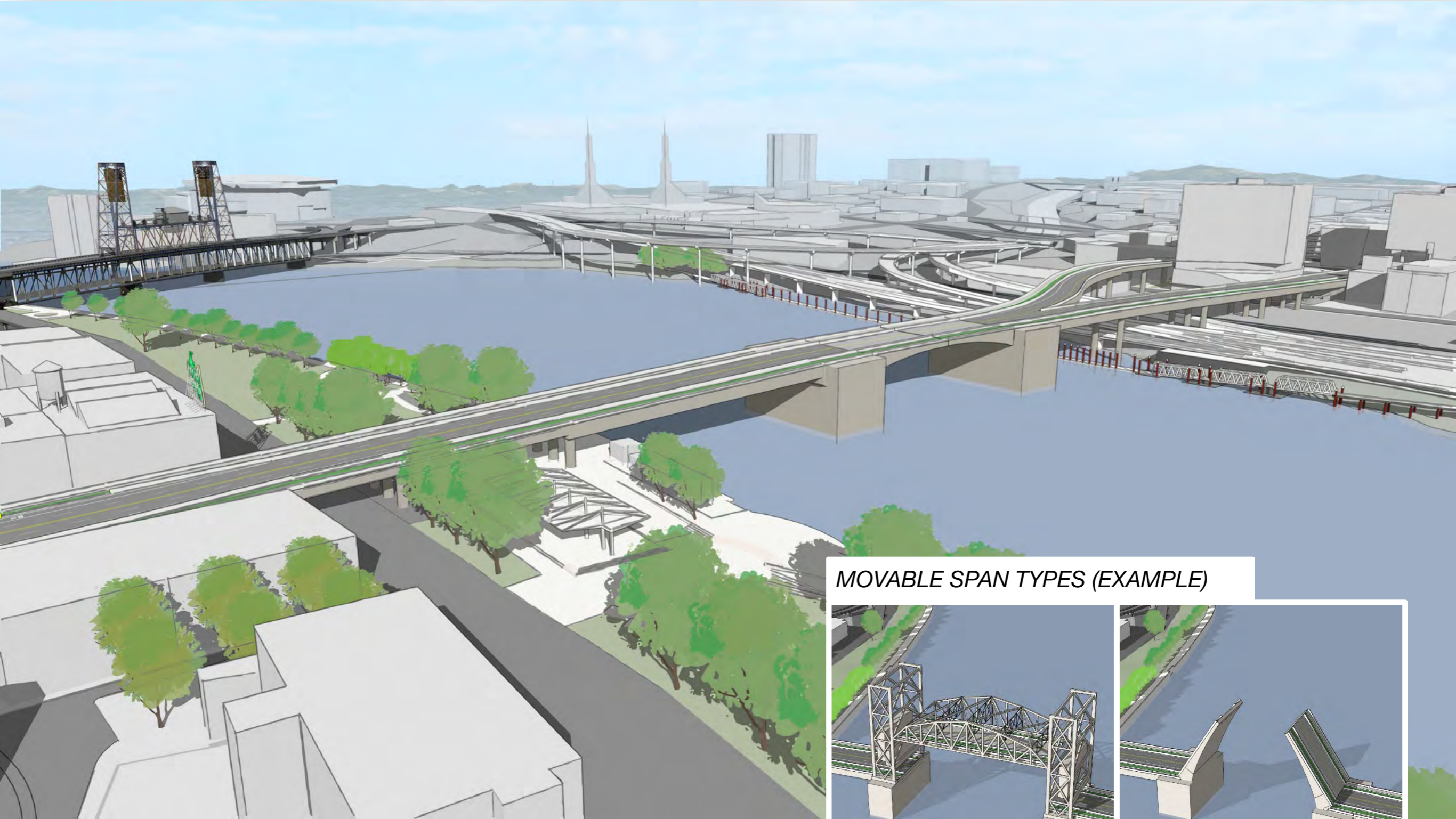
*View of East Approach from SW (Arch Concept)*



*SE 2<sup>nd</sup> Ave, Looking North at Skatepark (Arch Concept)*



# Replacement: Couch Extension

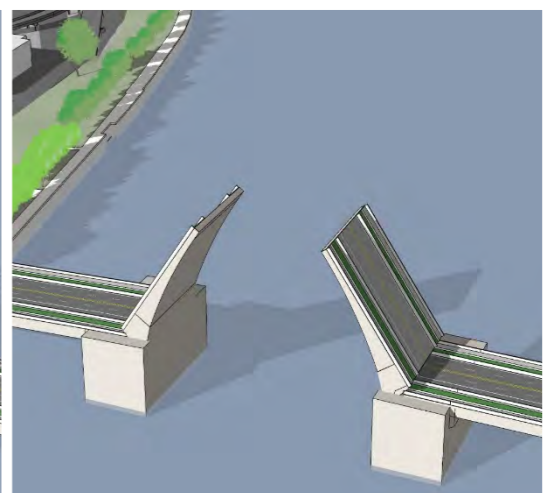


*View from southwest*

## MOVABLE SPAN TYPES (EXAMPLE)



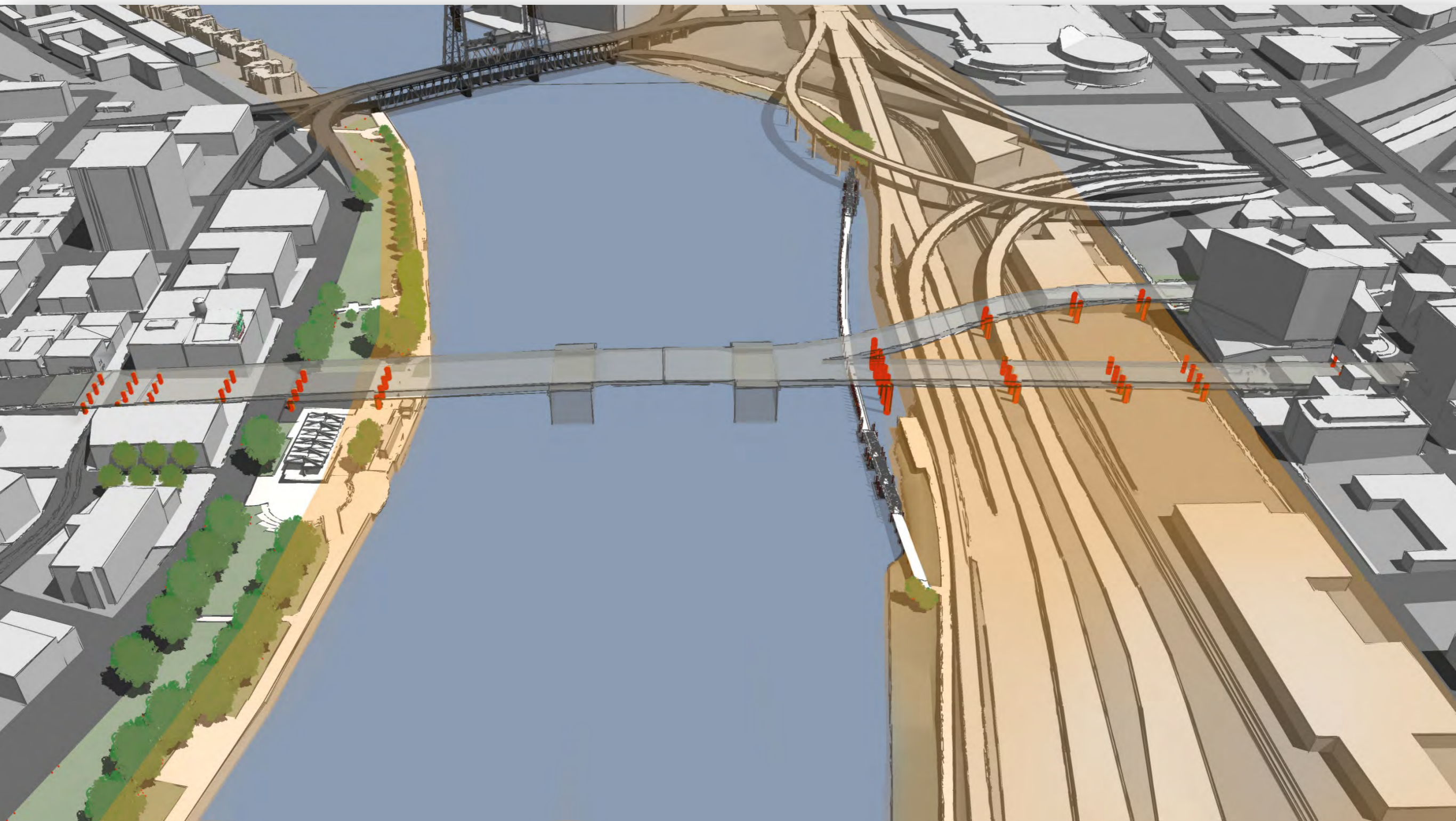
*Lift*




*Bascule (shown above)*



# Replacement: Couch Extension



-  Bridge Supports
-  Geotechnical Hazard Zone

*View showing column layout and geotechnical hazard zone from south*



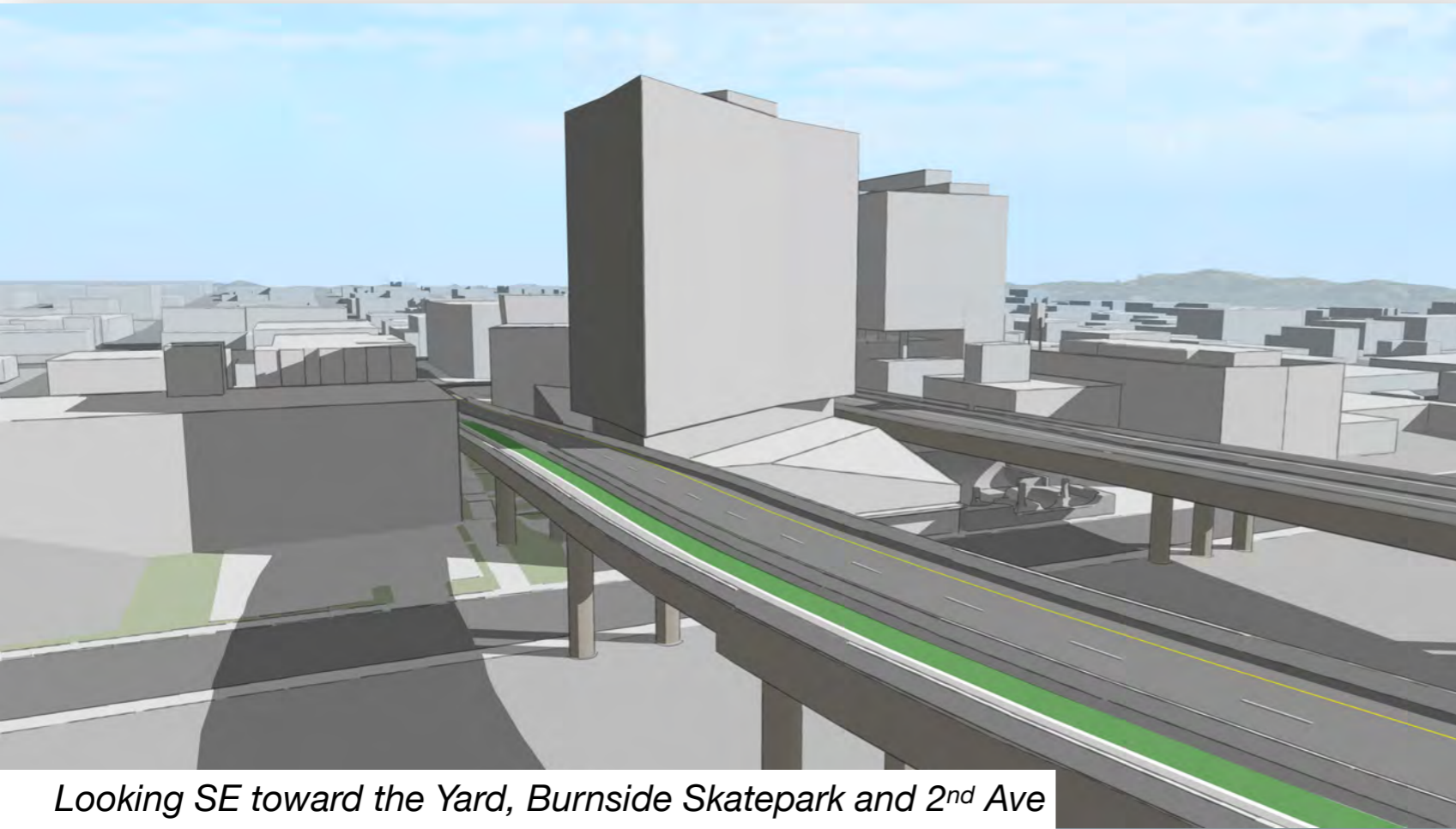
# Replacement: Couch Extension



*Waterfront Park, Looking NE from Naito Pkwy*



# Replacement: Couch Extension



*Looking SE toward the Yard, Burnside Skatepark and 2<sup>nd</sup> Ave*



*View of East Approach from SW*

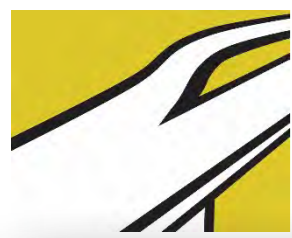


# Replacement: Couch Extension



*View to the north along E 2<sup>nd</sup> Ave*

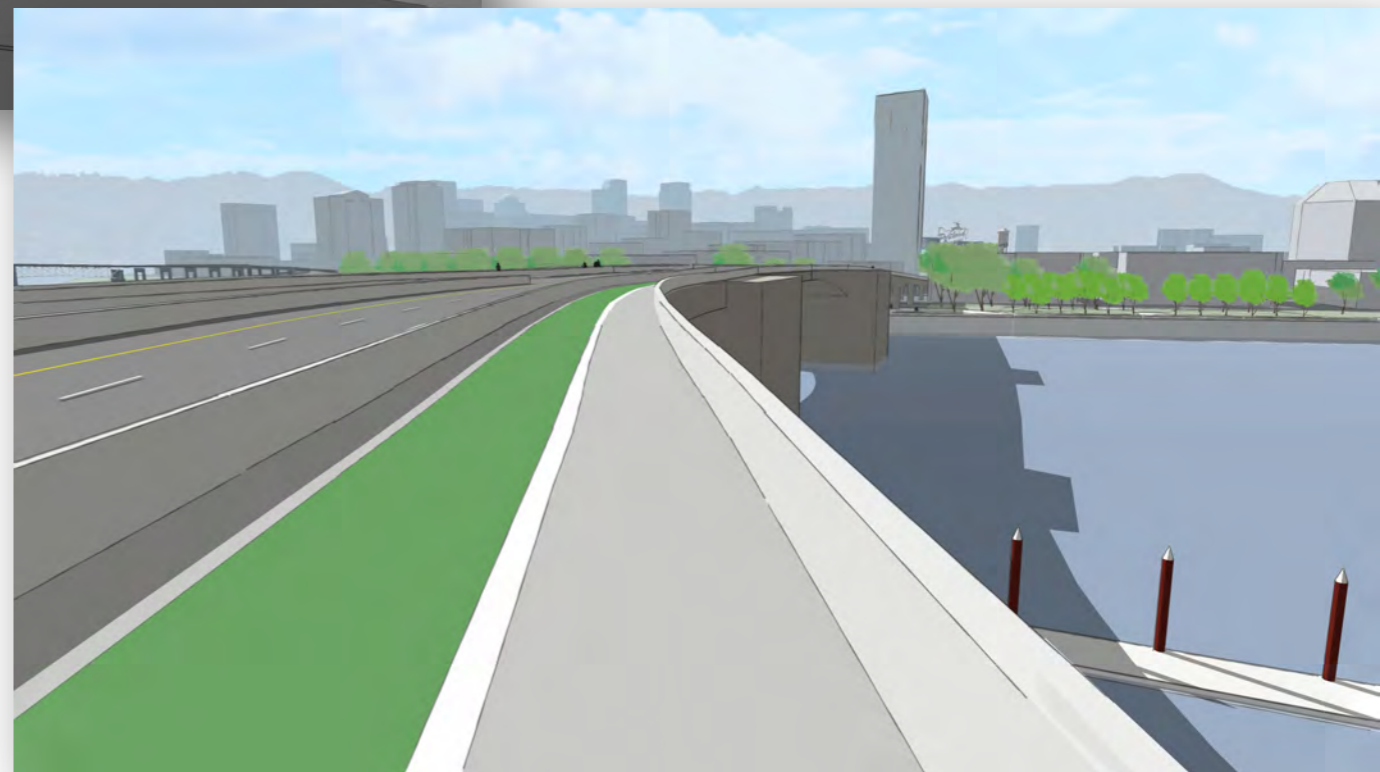




# Replacement: Couch Extension



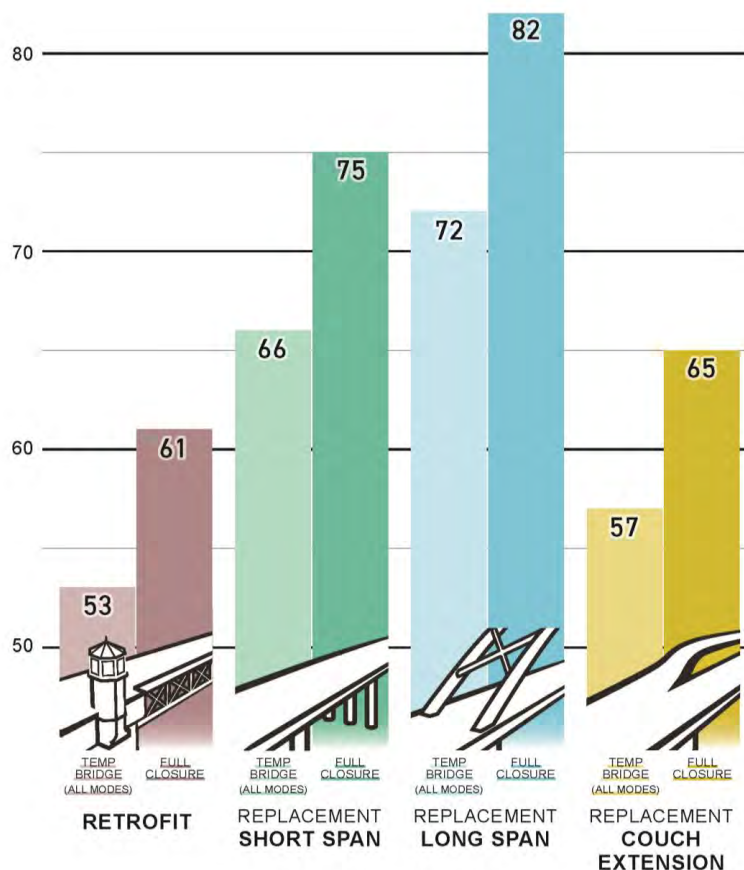
*View west from NE Couch and MLK*



*View of downtown from N Sidewalk of Couch Extension*

# CTF Discussion

## *Questions and clarifications?*



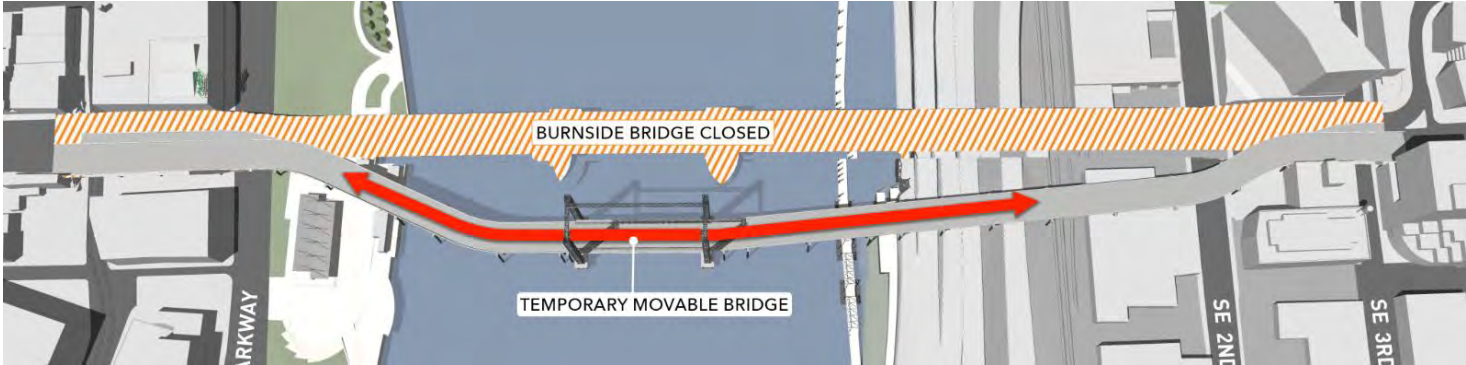
# Evaluation Process and Results

## Traffic Options During Construction

### Full Bridge Closure

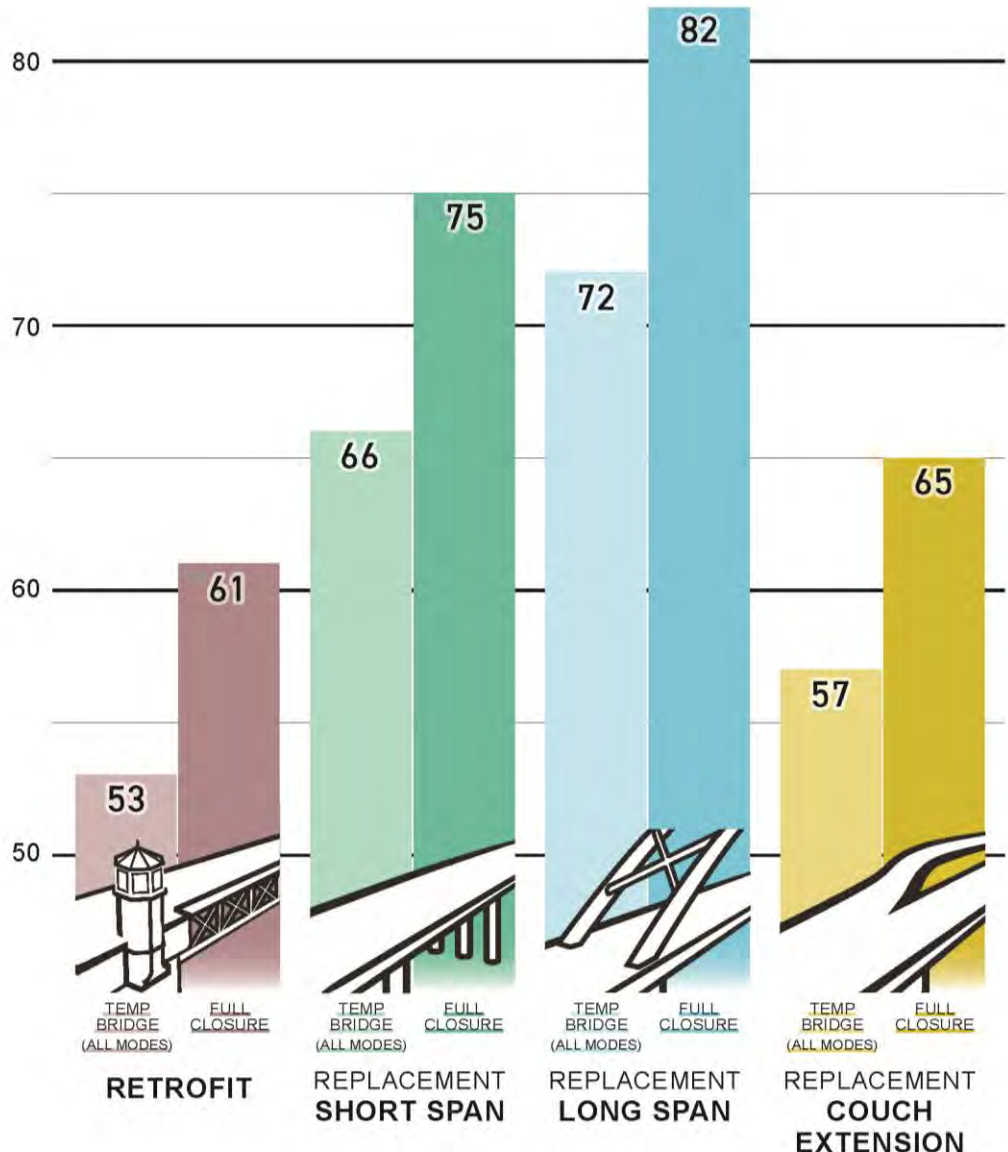


### Temporary Bridge



# Evaluation Process and Results

## Scoring Results

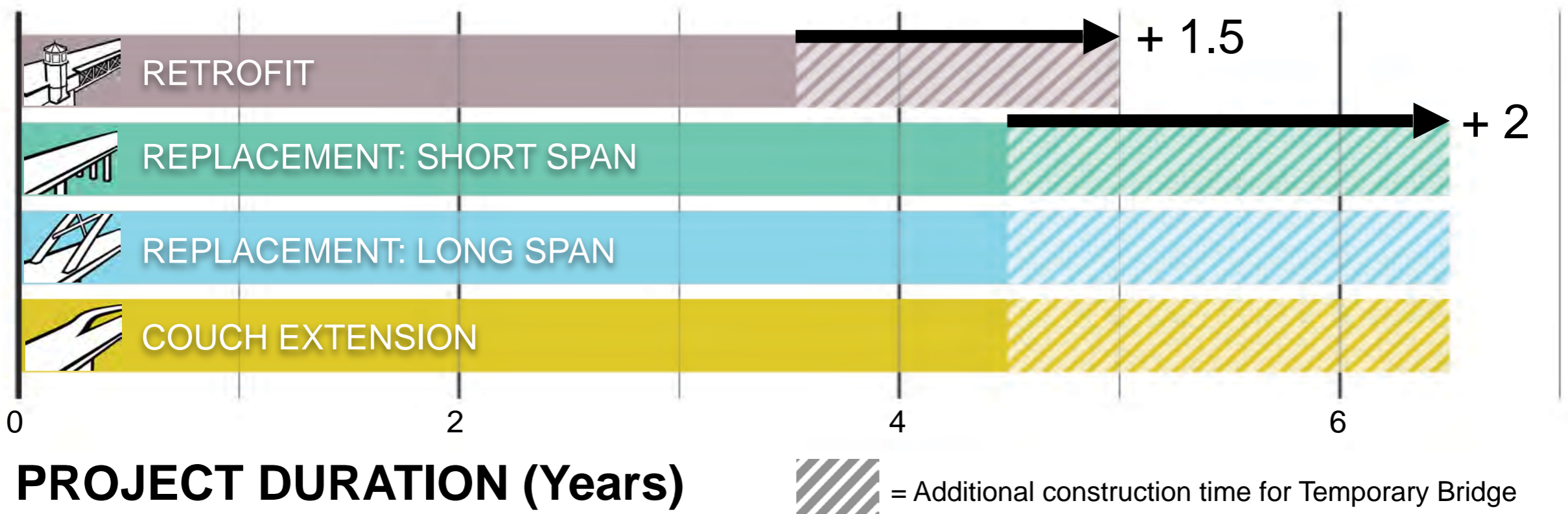


# Traffic Options During Construction Highlights



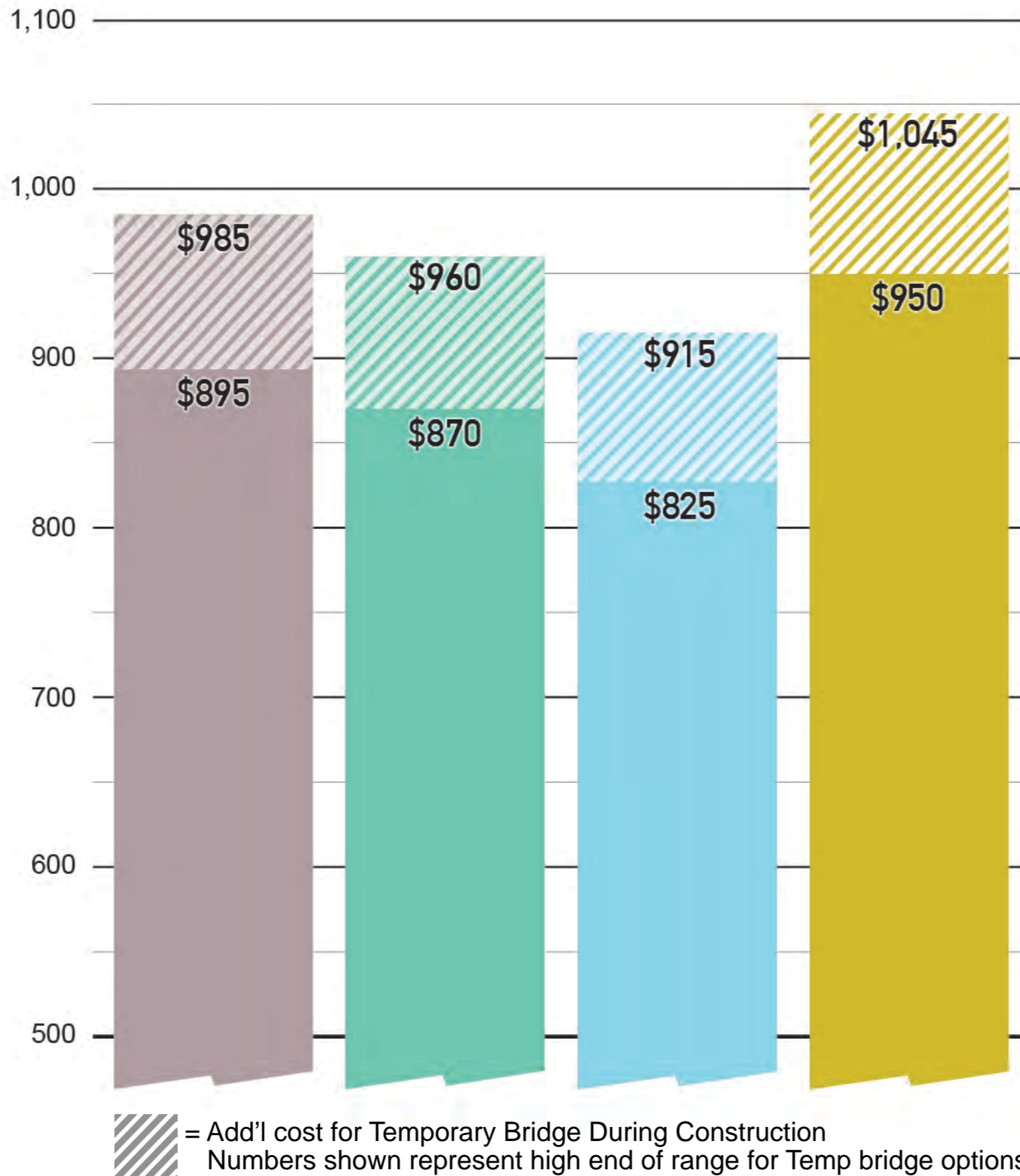


# Full Bridge Closure



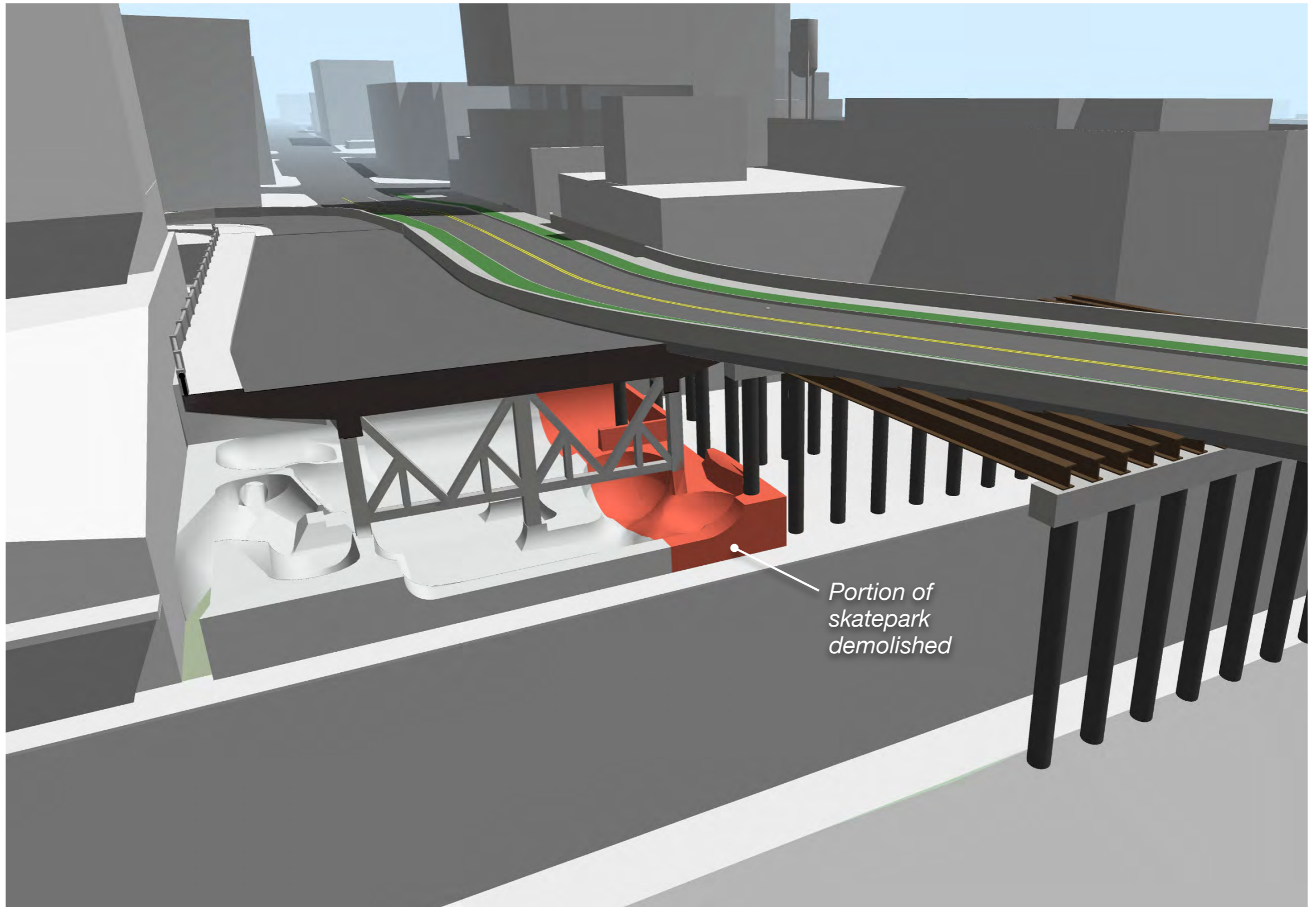


# Full Bridge Closure





# Temporary Bridge



Portion of skatepark demolished

*View of 2<sup>nd</sup> Ave, E Burnside, and Burnside Skatepark, looking SE*





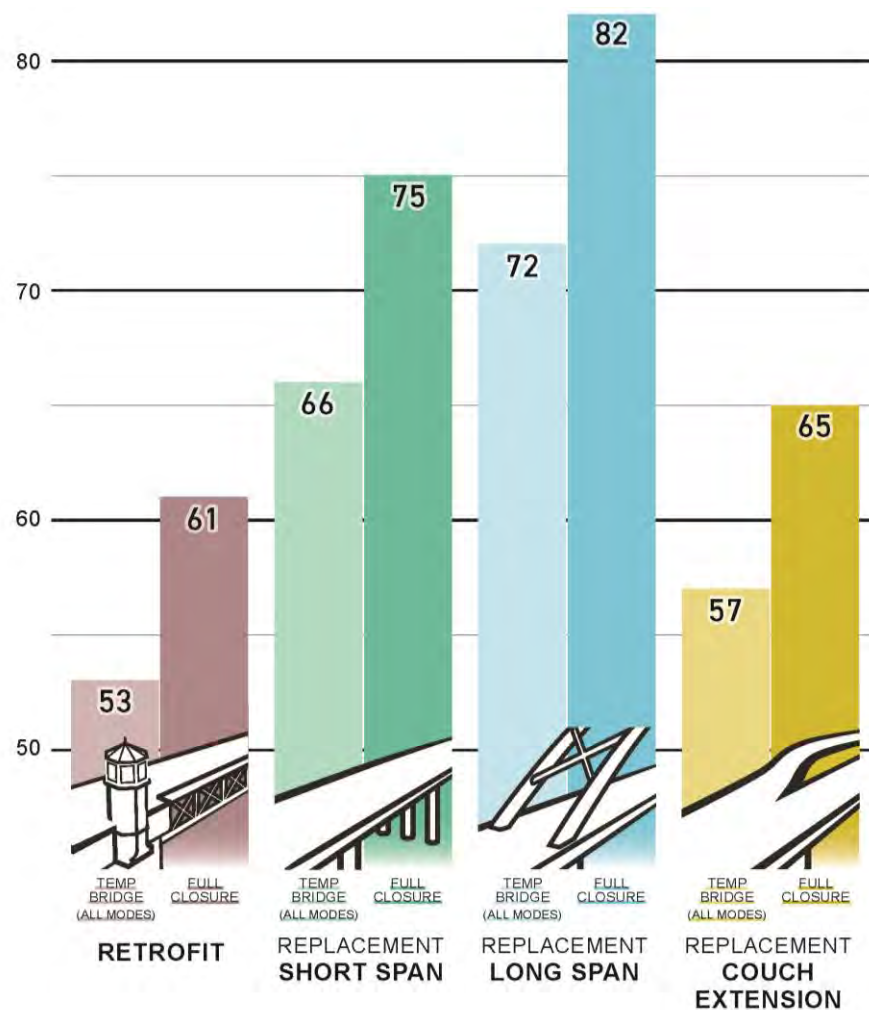
# Temporary Bridge



Looking NE

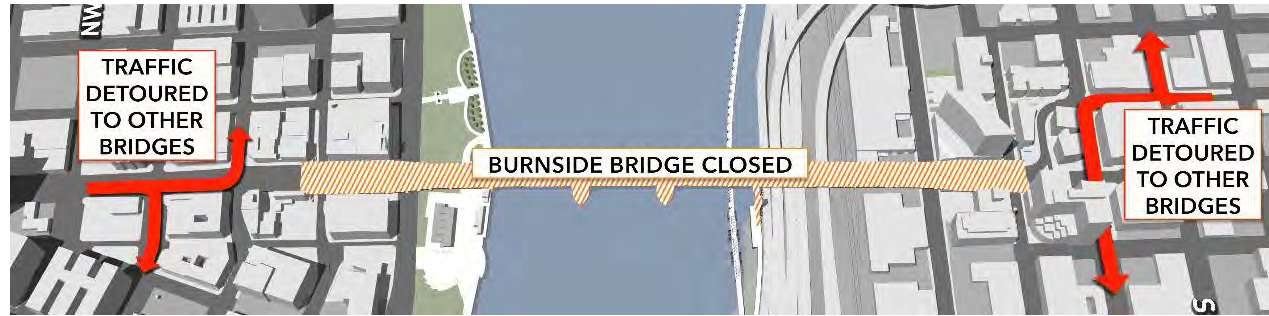
# CTF Discussion

- *Questions and clarifications?*
- *Is there more information you need to inform your discussion?*

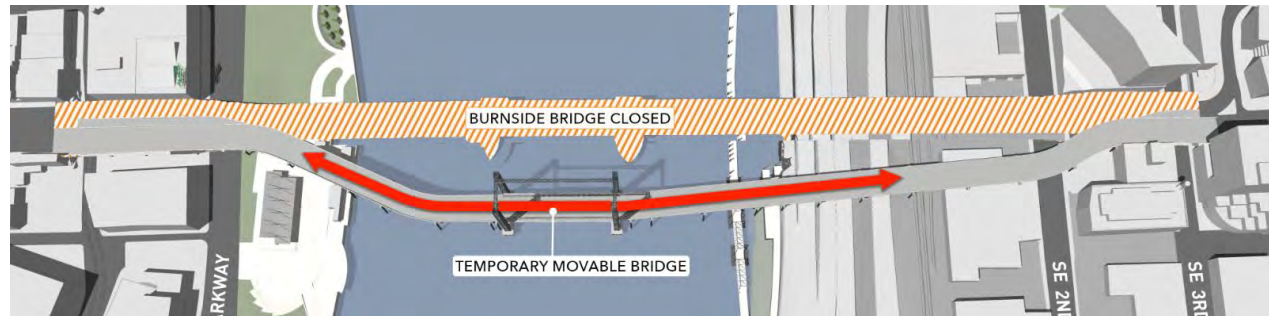


## *Traffic option during construction*

### Full Bridge Closure



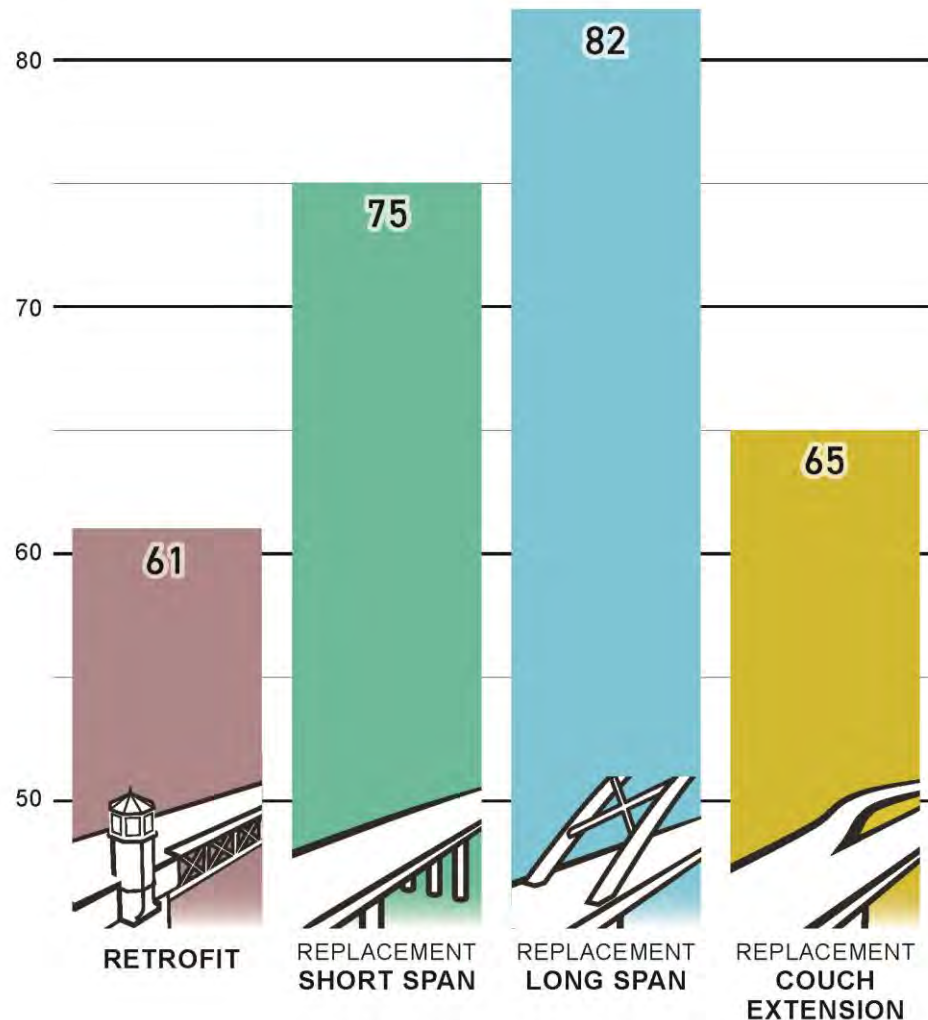
### Temporary Bridge



# CTF Recommendation

(Traffic Option: Full Bridge Closure)

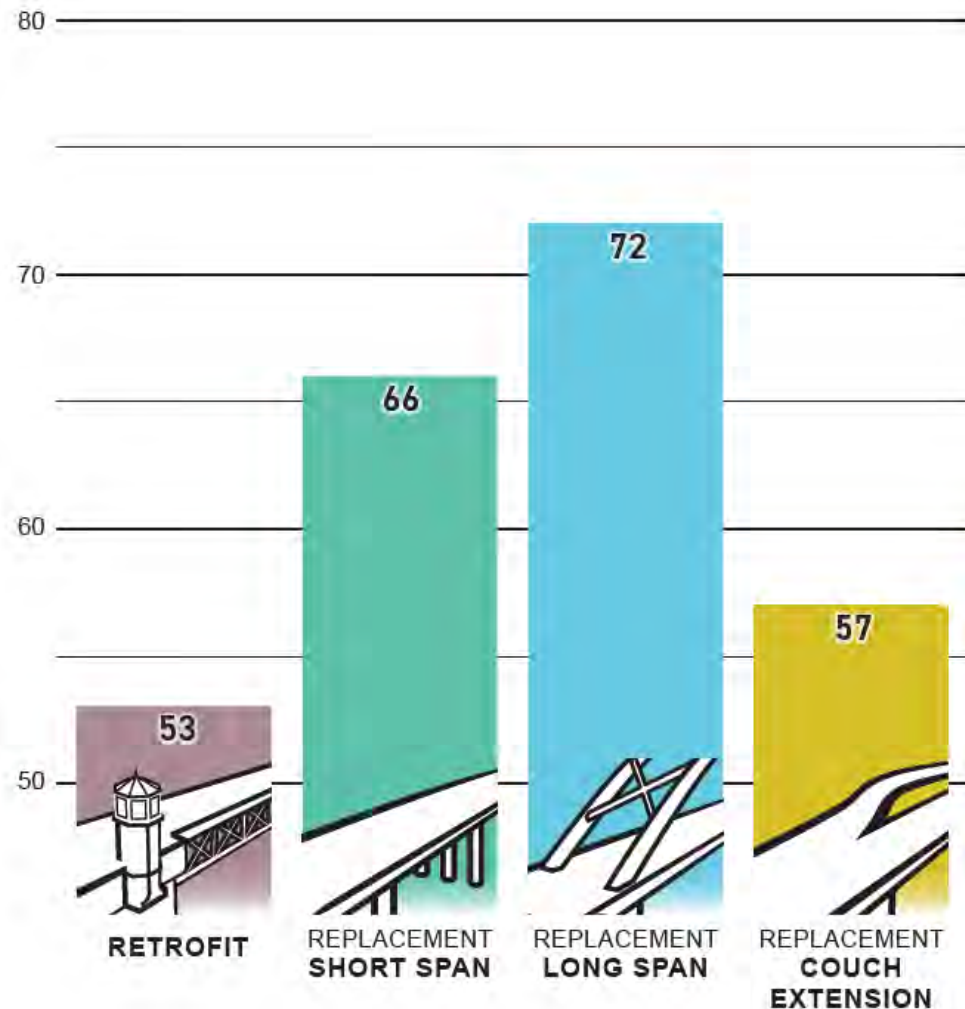
## *Preferred bridge alternative*



# CTF Recommendation

(Traffic Option: Temporary Bridge)

## *Preferred bridge alternative*



## Upcoming Meetings

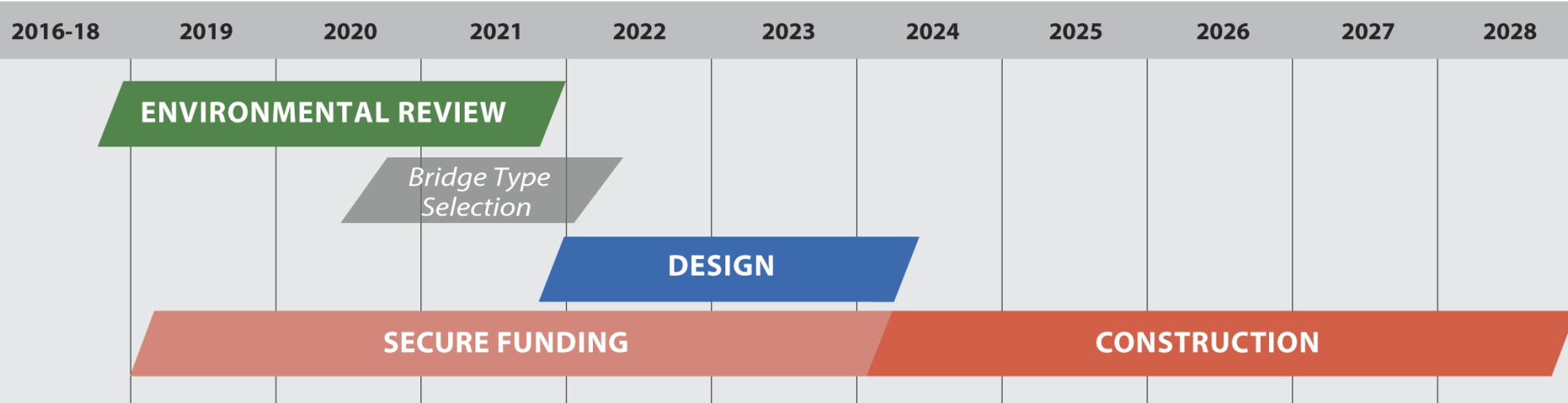
- June 15 – CTF recommendation on Preferred Alternative  
*(if needed)*
- June 22 – SASG
- July – MultCo Board of County Commissioners briefing
- August – Public Outreach on recommended PA
- September – CTF and SASG
- October – Policy Group PA Recommendation



# Next Steps

## Timeline and Process

### Next Project Phase: Bridge Type Selection



### CTF Member Role and Next Steps

# Thank you!

