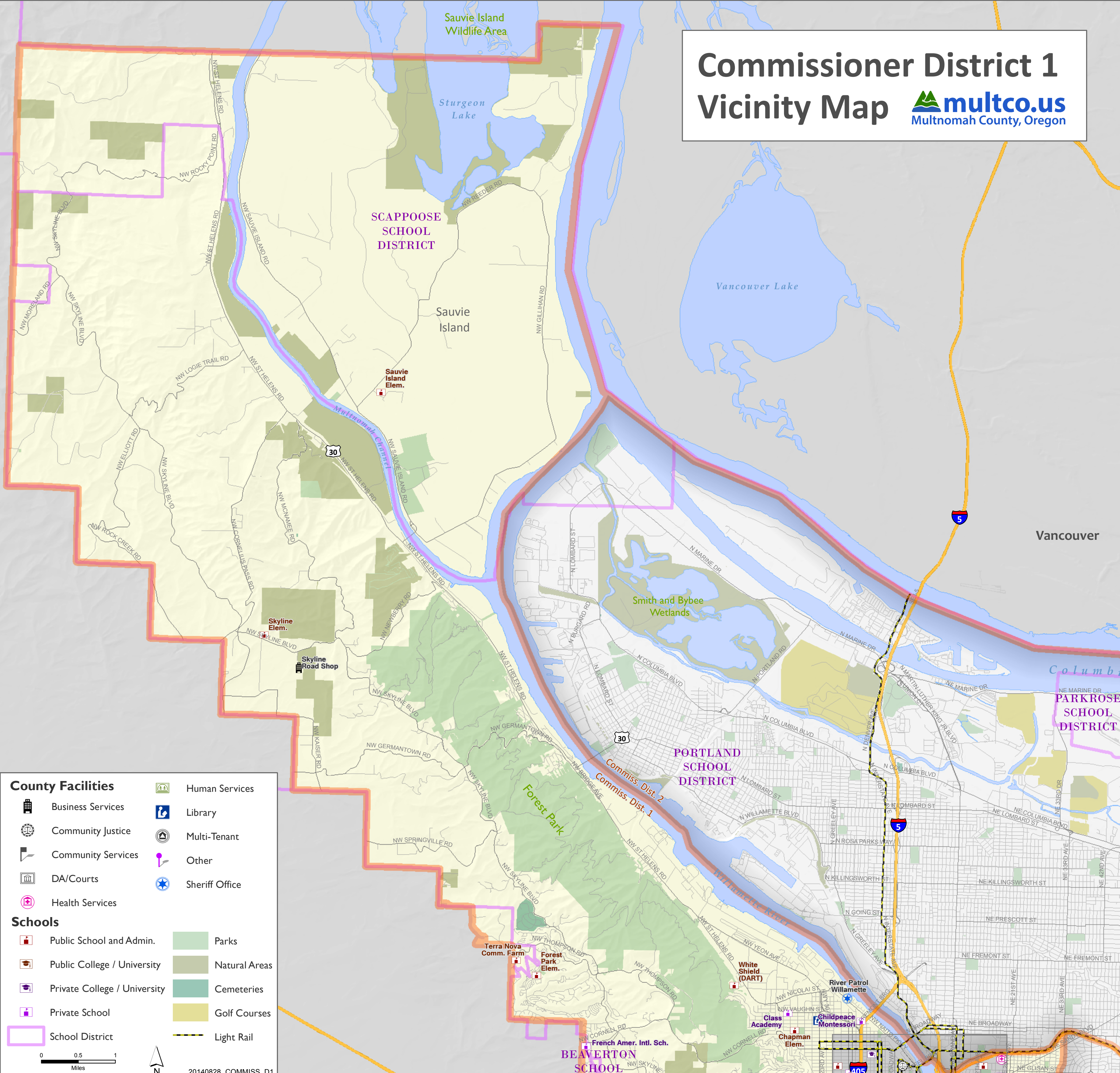


Commissioner District 1 Vicinity Map



County Facilities

- Business Services
- Community Justice
- Community Services
- DA/Courts
- Health Services
- Human Services
- Library
- Multi-Tenant
- Other
- Sheriff Office

Schools

- Public School and Admin.
- Public College / University
- Private College / University
- Private School
- School District
- Parks
- Natural Areas
- Cemeteries
- Golf Courses
- Light Rail

0 0.5 1 Miles

20140828_COMMISS_D1

