

# Multnomah County Deflection Program

## PHASE 2 COORDINATED CARE PATHWAY CENTER WITH SOBERING

### Journey Map

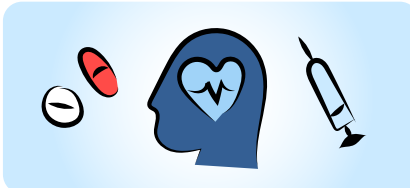
This visual illustrates the journey and pathways to the Coordinated Care Pathway Center and connections to treatment and recovery support.

### Who is eligible?

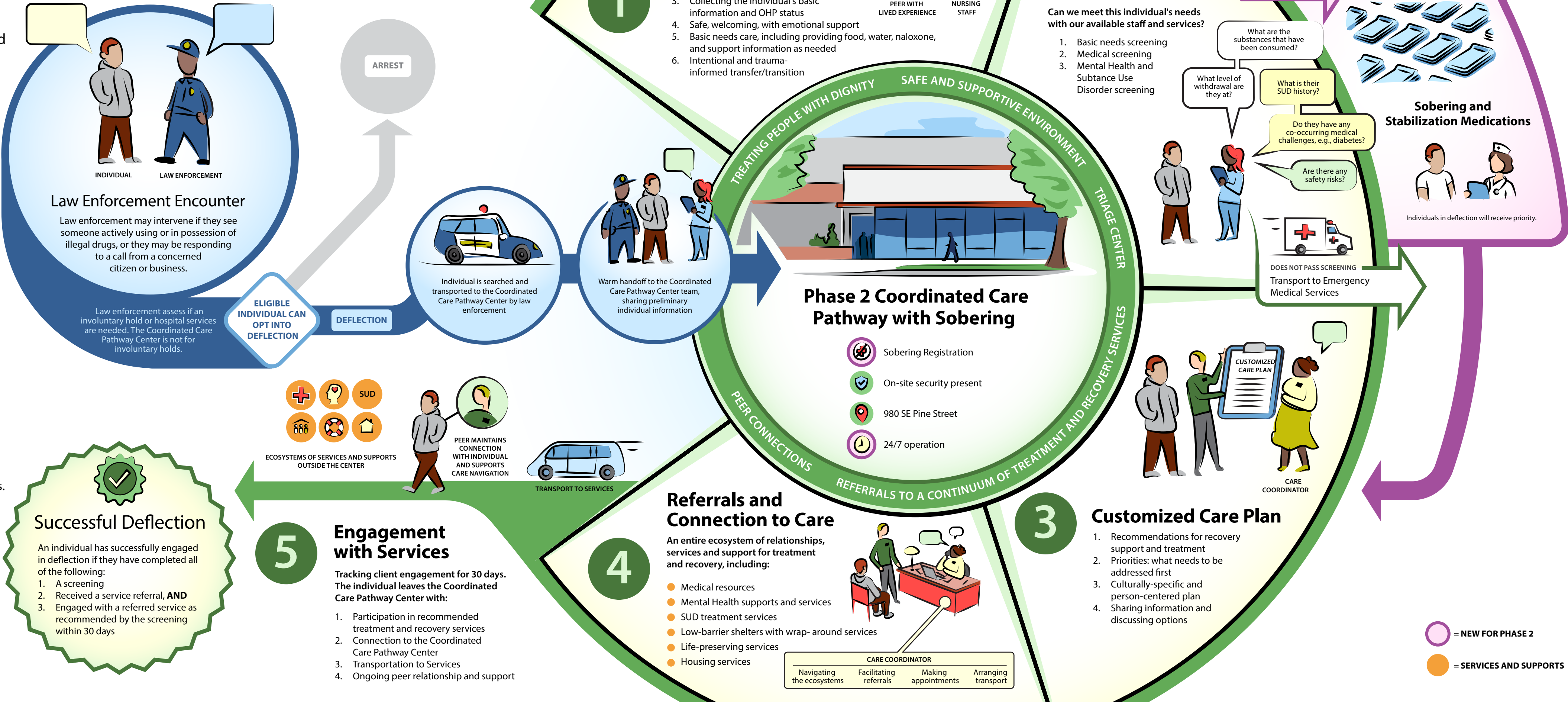
Eligible individuals are those who:



- ✓ Come into contact with law enforcement **AND**
- ✓ Are found to be in possession of small amounts of illegal drugs for their personal use **AND**
- ✓ Are not committing any other crimes **AND**
- ✓ Have not had an unsuccessful deflection within the last 30 days.



- ✓ Individuals may have a substance use disorder, another behavioral health disorder or co-occurring disorders



### Deflection program principles



Collaborative effort between law enforcement and behavioral health



Person-centered



Data-Driven and Evidence-based



Trauma-informed



Culturally and linguistically responsive



Continuous learning and improvement



Community Engagement