

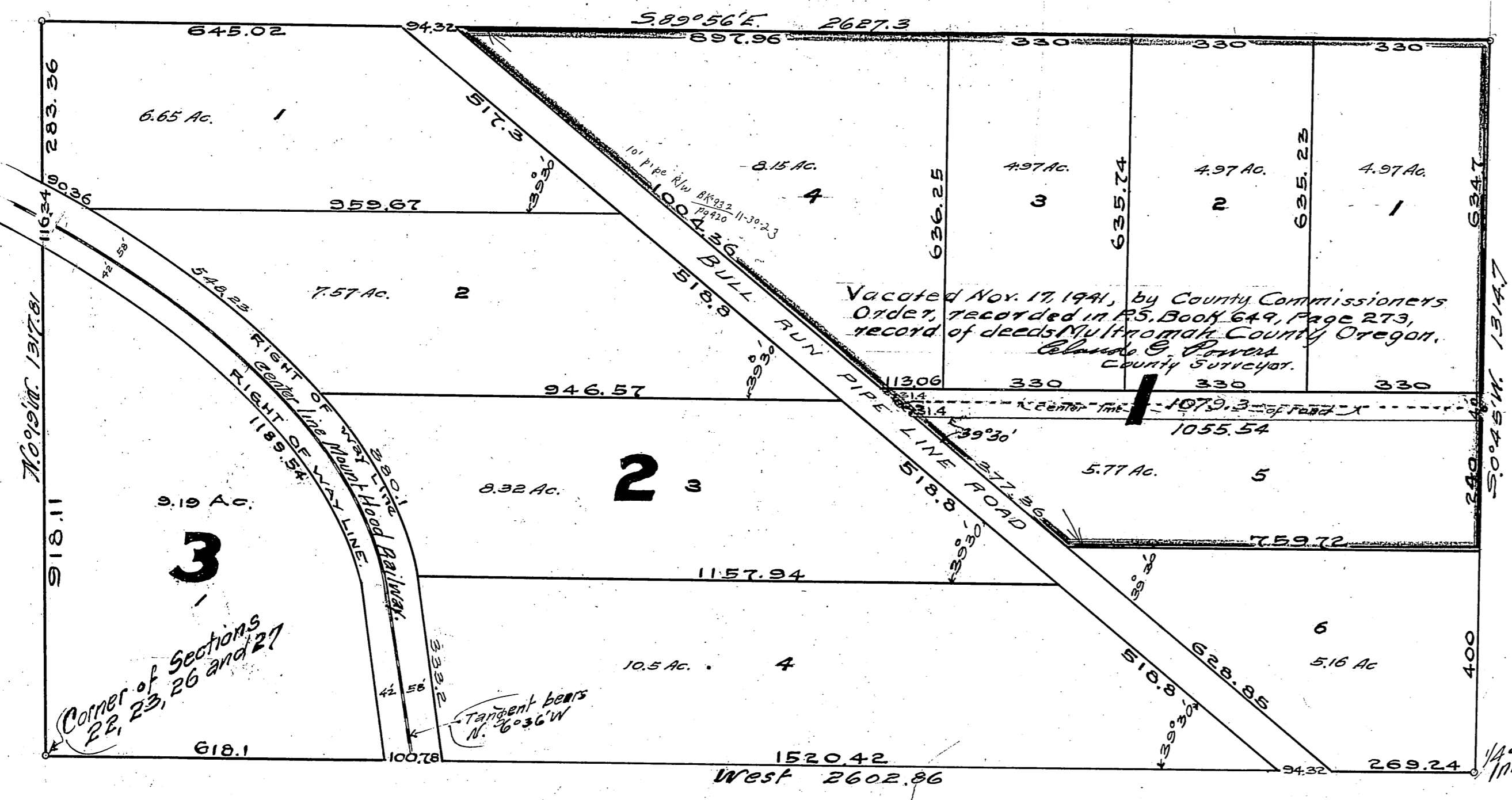
Form R-1  
STATE OF OREGON, } ss.  
County of Multnomah, }  
I, F. S. Fields, County Clerk and ex-officio  
Recorder of Conveyances, in and for said County  
do hereby certify that the within instrument of  
writing was received for record and recorded in  
the record of \_\_\_\_\_ of said  
County at \_\_\_\_\_

*M* 274  
*P* 378  
1912  
DEC 21  
1912  
DEC 21  
1912  
DEC 21

Witness my hand and seal of office affixed  
By *F. S. Fields* County Clerk  
Deputy.

# EDGEWATER.

Situated in T. 15., R. 4 E. Sec. 23 W. 11 M.  
Scale 1" = 200 ft.



All taxes from 1906 to 1911 are paid  
*R. Stevens* of Sheriff of Multnomah County  
Per *C. Sweeney* Deputy.

Approved this 20<sup>th</sup> day of December 1912  
*T. S. Sigler* County Assessor  
Per *A. Maxwell* Deputy.

The annexed plat is of a suitable and convenient  
character and is approved this 20 day of  
December 1912.  
*Phil Holbrook* County Surveyor  
Per \_\_\_\_\_ Deputy.

Approved this 21<sup>st</sup> day of December 1912  
*T. J. Beleston* County Judge  
*W. J. Lightner* Commissioner  
*W. V. Hart* Commissioner

*Wm. J. Hilde* County Clerk

**Dedication.** Know all men by these presents: That Mt. Hood Railway Development Company, a corporation duly incorporated, organized and existing under the laws of the State of Oregon, and having its principal office at the City of Portland, Oregon, does hereby certify and declare the annexed map and plat to be the map and plat of Edgewater, in the County of Multnomah, State of Oregon, and said Mt. Hood Railway Development Company does further certify and declare that the said map and plat is a true, full and correct map and plat of said Edgewater; the real property platted as Edgewater is located in the County of Multnomah, State of Oregon, and is particularly described in the affidavit of the surveyor, which affidavit is herewith annexed and made a part hereof. The lots and blocks are of the dimensions indicated on said map and plat, and the streets are of the width as delineated on said map and plat; and said Mt. Hood Railway Development Company does hereby dedicate all said streets shown and set forth on said map and plat to the use of the public as public highways forever.

IN WITNESS WHEREOF, Mt. Hood Railway Development Company, in pursuance of a resolution of its Board of Directors duly and regularly adopted, has caused this dedication to be made in its corporate name and under its corporate seal by its President and Secretary, thereunto duly authorized, this 19<sup>th</sup> day of December 1912 Executed in the presence of us as witnesses thereto:

*Wm. J. Hilde*  
By *Wm. J. Hilde* President  
Mt. Hood Railway Development Company.  
By *Wm. Umbdenstock* Secretary.

the corporation which executed the foregoing instrument and that the seal affixed to said instrument is the corporate seal of said corporation, and that said instrument was signed and sealed in behalf of said corporation by authority of its Board of Directors; and said G. M. Hyland and said W. M. Umbdenstock acknowledged said instrument to be the free act and deed of said corporation.

*Edna Lewis Johnson*  
Notary Public in and for the  
State of Oregon.

Know all men by these presents, That the Mount Hood Company, a corporation duly organized in a certain State, has caused the plat of Edgewater, in the County of Multnomah, State of Oregon, to be platted by Mt. Hood Railway Development Company, a corporation duly organized in the State of Oregon, and said Mt. Hood Company, in pursuance of a resolution of its Board of Directors duly and regularly adopted, has caused this dedication to be made in its corporate name and under its corporate seal by its President and Secretary thereunto duly authorized, this 20<sup>th</sup> day of December 1912.

Executed in the presence of us as witnesses thereto:  
*G. J. Steely*  
*C. N. Huggins*  
The Mount Hood Company.  
By *C. N. Huggins* President  
The Mount Hood Company.  
By *C. Huggins* Secretary.

State of Oregon } s.s.  
County of Multnomah } s.s.  
On this 20<sup>th</sup> day of December 1912, before me a Notary Public, in and for said County and State, appeared B. S. Josselyn and C. N. Huggins to me personally known, who being duly sworn, did say that he the said B. S. Josselyn is the President and he, the said, C. N. Huggins is the Secretary of the Mount Hood Company, the corporation which executed the foregoing instrument and that the seal affixed to said instrument is the corporate seal of said corporation, and that said instrument was signed and sealed in behalf of said corporation by authority of its Board of directors; and said B. S. Josselyn and said C. N. Huggins acknowledged said instrument to be the free act and deed of said corporation.

*G. J. Steely*  
Notary Public in and for  
the State of Oregon.

State of Oregon } s.s.  
County of Multnomah } s.s.  
I, R. F. Scott being first duly sworn, do say that I am the surveyor who surveyed the land represented on the annexed plat; that the initial point of such survey is a stone 6x6x12 ins., set 6 ins. below the surface of the ground; that said initial point of said survey is situated at the 1/4 sec. cor. between sections 23 and 26 T. 15., R. 4 E. W. 11 M. That an accurate description of said Edgewater as dedicated on the annexed plat, and as surveyed by me is as follows: Beginning at said initial point thence running West along the line between sections 23 and 26, 2602.86 ft. to the Corner of sections 22, 23, 26 and 27, thence N. 01° 19' W. 1317.7 ft., thence S 89° 56' E. 2627.3 ft., thence S 0° 25' W. 1317.7 ft. to place of beginning. Excepting a strip of land 100 ft wide, being 58 ft in width on the northern side, and 42 ft in width on the southern side of the center line of the Mount Hood Railway, and shown on this plat as the right of way of said railway.

Subscribed and sworn to before me this 20<sup>th</sup> day of December 1912.  
*Edna Lewis Johnson*  
Notary Public in and for  
the State of Oregon.

State of Oregon } s.s.  
County of Multnomah } s.s.  
On this 19<sup>th</sup> day of December 1912, before me, a Notary Public, in and for said County and State, appeared G. M. Hyland and W. M. Umbdenstock to me personally known, who being duly sworn, did say that he the said G. M. Hyland is the President and he, the said W. M. Umbdenstock is the Secretary of Mt. Hood Railway Development Company,