

ENERGY UTILITY BILL DISCOUNTS & RESOURCES

Discounts

PGE, NW Natural, and Pacific Power offer bill discounts for people with low incomes. These discount programs are utility run, not government programs.

Call your energy provider(s) to learn more:

PGE: 503-228-6322

NW Natural: 503-226-4211

Pacific Power: 888-221-7070

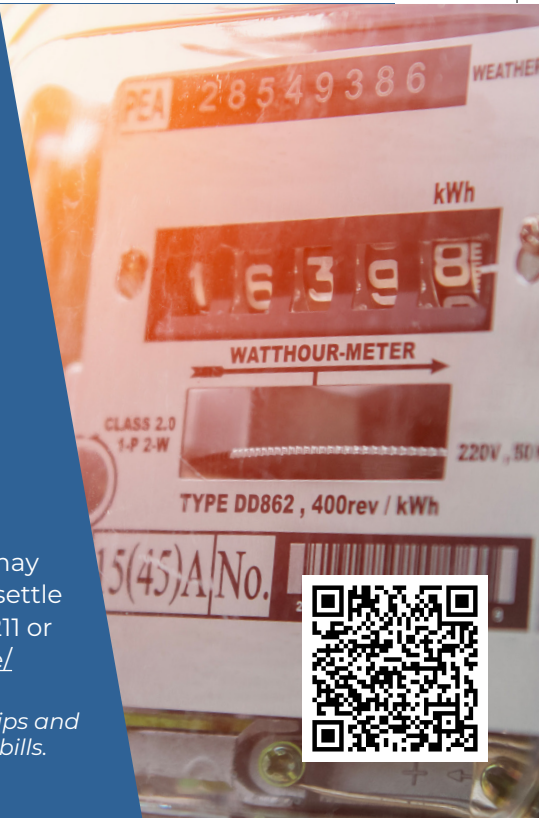
Assistance

At risk of disconnection or disconnected? You may qualify for energy assistance that can help you settle some or all of that debt. Learn more by calling 211 or visiting <https://www.211info.org/utility-assistance/>



Office of Sustainability

Scan the QR code for additional tips and resources for lowering your utility bills.



HIRISA KAFFALTII BIILII ANNIISAA FI ODEEFFANNOOWWANII

Hir'ina kaffaltiiwwanii

PGE, NW Natural, fi Pacific Power galii isaanii irratti hundaa'uun namoota ulaagaa guutaniif tajaajila hir'ina ni kennu. Sagantaawwan hir'ina kaffaltii kun sagantaalee mootummaa osoo hin taane kan hojii itti fayyadamaati.

Caalaatti baruuf dhiyeessaa(wwan) anniisaa keessaniif bilbilaa:

PGE: 503-228-6322

NW kan Uumamaa: 503-226-4211

Humna Paasifikii(Pacific Power): 888-221-7070

Gargaarsa

Balaa walitti hidhamiinsi addaan cituu yks adda citee? Gargaarsa anniisaa liqaa sana keessaa muraasa ykn guutummaatti akka xumurtaniif isin gargaaruu danda'u argachuuf ulaagaa guutuu dandeessu. Gara 211 bilbiluun ykn <https://www.211info.org/utility-assistance/> daawwachuudhaan caalaatti hubadhaa.



Office of Sustainability

Gorsaa fi odeeffannoo dabalataa kaffaltii tajaajila mana keessanii hir'isuuf gargaaru argachuuf koodii QR iskaan godhadhaa.

