

MULTNOMAH E. S. D. P1 Z5

V	P	U	O	W
O	A	N	V	R
T	T	D	E	I
E	R	E	R	T
S	I	R	V	E
	C	V	O	-
	I	O	T	I
	A	T	E	N
		E	S	S
		S		

All Districts

013	PRECINCT	0432	24	18	6	0	0
014	PRECINCT	0433	18	10	8	0	0
017	PRECINCT	0521	27	9	18	0	0
019	PRECINCT	0542	1	1	0	0	0
020	PRECINCT	0543	5	3	0	0	2
021	PRECINCT	0546	0	0	0	0	0
022	PRECINCT	0547	0	0	0	0	0
024	PRECINCT	0590	4	3	1	0	0
188	PRECINCT	3309	532	360	169	0	3
194	PRECINCT	3322	355	252	97	0	6
195	PRECINCT	3323	44	29	15	0	0
200	PRECINCT	3329	73	48	24	0	1
201	PRECINCT	3330	201	149	48	1	3
203	PRECINCT	3336	171	115	53	0	3
204	PRECINCT	3337	14	10	4	0	0
272	PRECINCT	4309	0	0	0	0	0
277	PRECINCT	4325	307	205	97	0	5
282	PRECINCT	4338	120	79	41	0	0
287	PRECINCT	4343	144	94	49	0	1
288	PRECINCT	4344	209	156	49	0	4
289	PRECINCT	4345	170	97	70	0	3
290	PRECINCT	4346	16	14	1	0	1
291	PRECINCT	4347	140	89	50	0	1
292	PRECINCT	4348	179	122	55	0	2
294	PRECINCT	4350	195	132	58	0	5
296	PRECINCT	4352	166	119	44	0	3
298	PRECINCT	4354	36	24	12	0	0
299	PRECINCT	4355	230	165	64	0	1
300	PRECINCT	4356	188	140	43	0	5
301	PRECINCT	4357	154	107	44	0	3
302	PRECINCT	4358	236	153	79	0	4
307	PRECINCT	5100	174	129	42	0	3
308	PRECINCT	5101	169	129	37	0	3
309	PRECINCT	5200	328	176	143	0	9
310	PRECINCT	5201	499	271	217	0	11
311	PRECINCT	5202	489	277	203	0	9
312	PRECINCT	5203	415	216	187	0	12
313	PRECINCT	5204	493	261	226	0	6
314	PRECINCT	5300	167	124	37	0	6
315	PRECINCT	5301	107	76	31	0	0
316	PRECINCT	5401	79	54	25	0	0
317	PRECINCT	5424	123	53	69	0	1
318	PRECINCT	5425	451	200	247	0	4
319	PRECINCT	5427	15	12	2	0	1

MULTNOMAH E. S. D. P1 Z5

V C	P S	U	O	W
O A	A W	N	V	R
T S	T A	D	E	I
E T	R N	E	R	T
S	I S	R	V	E
	C O	V	O	-
	I N	O	T	I
	A	T	E	N
		E	S	S
		S		

All Districts

320	PRECINCT	5434	334	176	156	0	2
322	PRECINCT	5602	80	53	26	0	1
323	PRECINCT	5603	95	58	31	1	5
324	PRECINCT	5604	211	131	77	0	3
325	PRECINCT	5605	130	87	43	0	0
326	PRECINCT	5606	163	107	54	0	2
327	PRECINCT	5805	191	124	62	0	5
328	PRECINCT	5806	196	150	46	0	0
329	PRECINCT	5809	174	113	57	0	4
330	PRECINCT	5819	171	125	42	0	4
331	PRECINCT	5820	204	132	65	0	7
332	PRECINCT	5823	231	154	75	0	2
333	PRECINCT	5824	268	177	88	0	3
334	PRECINCT	5825	306	217	85	0	4
335	PRECINCT	5828	293	212	80	0	1
336	PRECINCT	5829	224	134	82	0	8
337	PRECINCT	5840	225	165	58	0	2
338	PRECINCT	5842	296	174	120	0	2
339	PRECINCT	5843	192	134	51	0	7
340	PRECINCT	5845	192	132	54	0	6
341	PRECINCT	5846	224	144	73	0	7
342	PRECINCT	5850	100	69	31	0	0
343	PRECINCT	5851	251	178	71	0	2
344	PRECINCT	5853	250	163	84	0	3
345	PRECINCT	5854	163	106	56	0	1
346	PRECINCT	5855	268	162	105	0	1
347	PRECINCT	5857	196	129	60	0	7
348	PRECINCT	5858	198	146	47	0	5
349	PRECINCT	5859	150	115	33	0	2
350	PRECINCT	5860	191	135	55	0	1
351	PRECINCT	5861	305	216	85	0	4
352	PRECINCT	5864	153	89	64	0	0
353	PRECINCT	5865	198	127	70	0	1
354	PRECINCT	5866	345	212	130	0	3
355	PRECINCT	5867	53	39	14	0	0
356	PRECINCT	5868	217	164	46	0	7
357	PRECINCT	5869	184	124	58	0	2
358	PRECINCT	5870	131	92	34	0	5
359	PRECINCT	5871	159	123	34	0	2
360	PRECINCT	5872	151	126	25	0	0
361	PRECINCT	5873	219	173	40	0	6
362	PRECINCT	5874	174	130	44	0	0
363	PRECINCT	5875	140	102	38	0	0
364	PRECINCT	5876	287	188	98	0	1

MULTNOMAH E. S. D. P1 Z5

V	P	U	O	W
O	A	N	V	R
T	T	D	E	I
E	R	E	R	T
S	I	R	V	E
	C	V	O	-
	I	O	T	I
	A	T	E	N
		E	S	S
		S		

All Districts

365 PRECINCT 5900	185	140	44	0	1
366 PRECINCT 5901	131	82	48	0	1
367 PRECINCT 5902	107	76	27	1	3
	-----	-----	-----	-----	-----
All Districts	16774	10986	5531	3	254
	=====	=====	=====	=====	=====
RACE TOTALS	16774	10986	5531	3	254

Certificate

I certify that the votes recorded on this abstract correctly summarize the tally of votes cast at the election indicated.

Vicki K. Ervin

Vicki K. Ervin, Director of Elections
 Multnomah County, Oregon

**** OFFICIAL STATEMENT OF VOTES FOR THE SPECIAL DISTRICT ELECTION ON MARCH 11, 1997 ****
 MULTNOMAH ESD DIRECTOR - AT LARGE, POS 6

Page Number 14.001.001

REGISTRED VOTERS	TURNOUT	TURNOUT PERCENTAGE	MULTNOMAH ESD																	
------------------	---------	--------------------	---------------	--	--	--	--	--	--	--	--	--	--	--	--	--	--	--	--	--

066 RALEIGH PK SCH	637	123	19.3%	76																
069 W SYLVAN SCHOOL	1223	236	19.2%	120																
092 RALEIGH PK SCH	1090	289	26.5%	18																
209 WASH CO ELECTIONS	77	11	14.2%	0																
236 WASH CO ELECTIONS	51	3	5.8%	2																
**** TOTALS ****	3078	662	21.5%	216																



MULTNOMAH E. S. D. P3 Z2

V C	M B	U	O	W
O A	E U	N	V	R
T S	G S	D	E	I
E T	H	E	R	T
S	M	R	V	E
	A	V	O	-
	N	O	T	I
		T	E	N
		E	S	S
		S		

All Districts

001	PRECINCT 0102	0	0	0	0	0
002	PRECINCT 0103	1	1	0	0	0
003	PRECINCT 0104	1	1	0	0	0
005	PRECINCT 0151	5	3	2	0	0
008	PRECINCT 0158	52	33	19	0	0
009	PRECINCT 0159	36	19	17	0	0
028	PRECINCT 1002	0	0	0	0	0
029	PRECINCT 1013	148	105	43	0	0
030	PRECINCT 1017	189	120	67	0	2
031	PRECINCT 1019	422	280	138	0	4
032	PRECINCT 1025	189	127	61	0	1
033	PRECINCT 1028	134	92	38	0	4
034	PRECINCT 1031	206	124	80	0	2
035	PRECINCT 1043	232	147	80	1	4
036	PRECINCT 1045	83	60	23	0	0
037	PRECINCT 1049	215	137	70	1	7
038	PRECINCT 1053	164	104	54	0	6
039	PRECINCT 1101	187	132	53	0	2
040	PRECINCT 1103	192	132	58	0	2
041	PRECINCT 1117	120	74	46	0	0
042	PRECINCT 1118	261	172	79	0	10
043	PRECINCT 1143	182	132	48	0	2
044	PRECINCT 1155	86	48	36	0	2
045	PRECINCT 1156	243	160	78	0	5
073	PRECINCT 1240	215	148	62	0	5
083	PRECINCT 1305	173	123	44	2	4
084	PRECINCT 1308	169	118	46	0	5
085	PRECINCT 1313	390	266	116	2	6
086	PRECINCT 1315	336	233	97	0	6
087	PRECINCT 1320	75	41	29	0	5
094	PRECINCT 1507	66	42	23	0	1
095	PRECINCT 1515	160	110	48	0	2
125	PRECINCT 3002	0	0	0	0	0
138	PRECINCT 3080	8	3	4	0	1
142	PRECINCT 3109	13	12	1	0	0
143	PRECINCT 3113	353	240	104	2	7
144	PRECINCT 3122	83	62	21	0	0
145	PRECINCT 3126	181	132	48	0	1
146	PRECINCT 3128	30	23	6	0	1
147	PRECINCT 3135	300	191	103	1	5
148	PRECINCT 3138	373	234	137	0	2
149	PRECINCT 3144	137	79	58	0	0
155	PRECINCT 3174	227	145	76	0	6
159	PRECINCT 3193	148	97	50	0	1

MULTNOMAH E. S. D. P3 Z2

V	C	M	B	U	O	W
O	A	E	U	N	V	R
T	S	G	S	D	E	I
E	T	H		E	R	T
S		M		R	V	E
		A		V	O	-
		N		O	T	I
				T	E	N
				E	S	S
				S		

All Districts

160	PRECINCT	3196	307	201	97	0	9
161	PRECINCT	3205	293	187	103	0	3
162	PRECINCT	3212	285	195	86	0	4
165	PRECINCT	3223	101	67	34	0	0
166	PRECINCT	3228	10	5	5	0	0
170	PRECINCT	3248	341	234	99	1	7
171	PRECINCT	3253	208	151	54	0	3
172	PRECINCT	3258	355	219	132	0	4
173	PRECINCT	3259	355	257	94	0	4
174	PRECINCT	3263	268	178	85	1	4
175	PRECINCT	3268	100	63	37	0	0
176	PRECINCT	3273	109	70	38	0	1
177	PRECINCT	3274	154	104	46	1	3
178	PRECINCT	3293	158	118	39	0	1
179	PRECINCT	3284	214	134	77	0	3
180	PRECINCT	3286	349	235	109	1	4
181	PRECINCT	3290	302	208	92	0	2
182	PRECINCT	3292	223	148	73	0	2
184	PRECINCT	3299	11	10	0	0	1
205	PRECINCT	3338	191	136	53	0	2
207	PRECINCT	4005	203	115	85	1	2
208	PRECINCT	4009	220	156	61	0	3
209	PRECINCT	4022	180	106	66	1	7
210	PRECINCT	4026	211	127	78	0	6
211	PRECINCT	4027	220	154	63	0	3
212	PRECINCT	4033	190	125	59	0	6
213	PRECINCT	4041	221	145	69	1	6
214	PRECINCT	4044	238	174	61	0	3
215	PRECINCT	4048	220	152	67	0	1
216	PRECINCT	4049	197	124	68	0	5
217	PRECINCT	4064	218	153	62	0	3
218	PRECINCT	4065	175	123	51	0	1
220	PRECINCT	4085	68	39	29	0	0
222	PRECINCT	4106	139	93	45	0	1
223	PRECINCT	4107	173	122	48	0	3
224	PRECINCT	4111	242	145	93	0	4
225	PRECINCT	4114	305	188	110	0	7
230	PRECINCT	4131	312	197	113	0	2
231	PRECINCT	4132	297	209	81	0	7
232	PRECINCT	4143	279	176	99	0	4
233	PRECINCT	4147	234	165	63	0	6
234	PRECINCT	4152	294	202	85	1	6
236	PRECINCT	4156	4	2	2	0	0
237	PRECINCT	4167	187	130	52	2	3

MULTNOMAH E. S. D. P3 Z2

V	C	M	B	U	O	W
O	A	E	U	N	V	R
T	S	G	S	D	E	I
E	T	H		E	R	T
S		M		R	V	E
		A		V	O	-
		N		O	T	I
				T	E	N
				E	S	S
				S		

All Districts

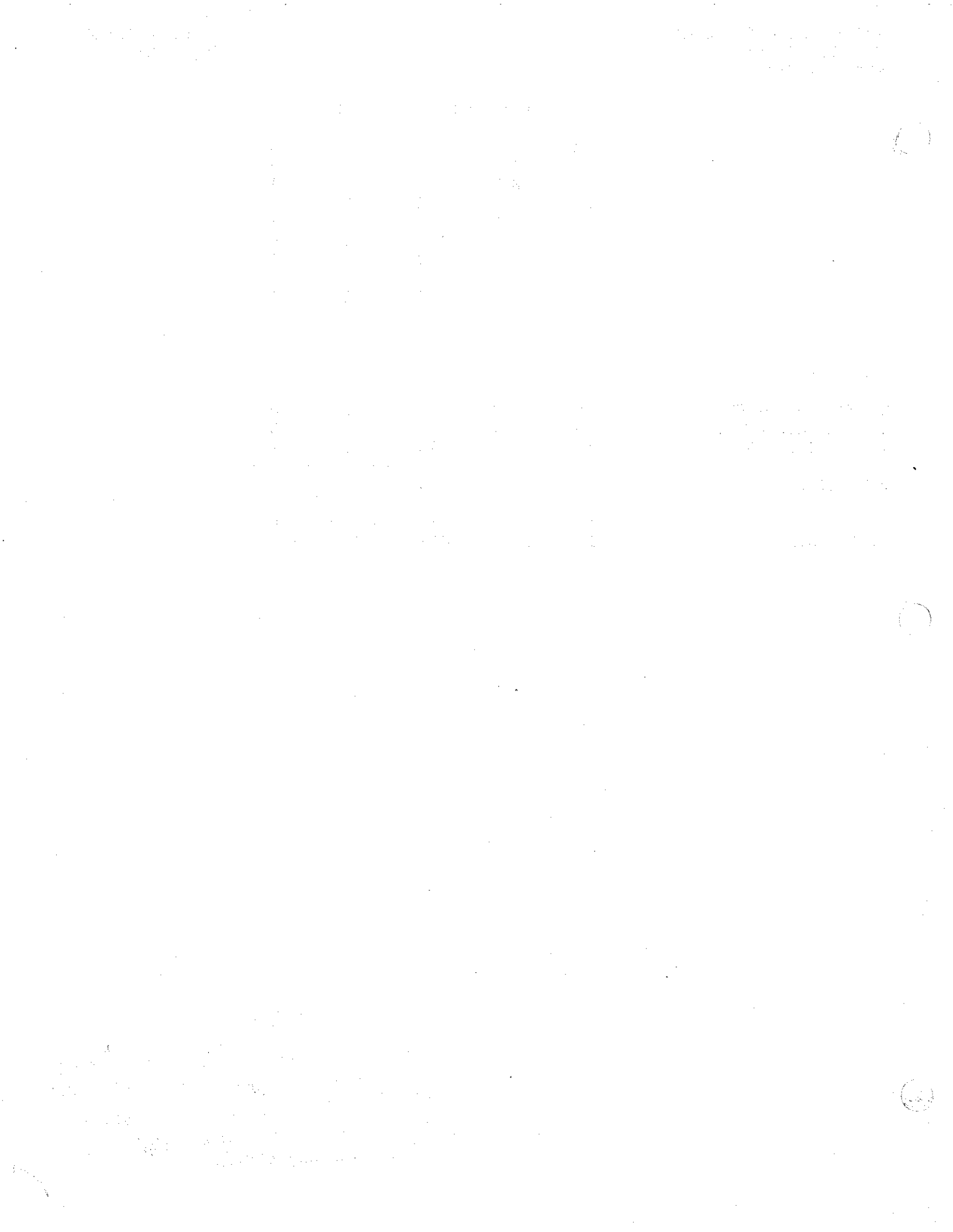
239 PRECINCT 4178	30	22	8	0	0
286 PRECINCT 4342	204	129	69	1	5
293 PRECINCT 4349	239	152	76	1	10

All Districts	16619	11047	5279	21	272
=====					
RACE TOTALS	16619	11047	5279	21	272

Certificate

I certify that the votes recorded on this abstract correctly summarize the tally of votes cast at the election indicated.

Vicki K. Ervin
 Vicki K. Ervin, Director of Elections
 Multnomah County, Oregon



MULTNOMAH E.S.D. P6 AT LARGE

V C	R C	U	O	W
D A	O H	N	V	R
T S	N I	D	E	I
E T	N	E	R	T
S	N	R	V	E
		V	O	-
		O	T	I
		T	E	N
		E	S	S
		S		

All Districts

001 PRECINCT 0102	234	174	59	0	1
002 PRECINCT 0103	1	0	1	0	0
003 PRECINCT 0104	3	2	1	0	0
005 PRECINCT 0151	5	5	0	0	0
006 PRECINCT 0156	23	18	5	0	0
007 PRECINCT 0157	7	7	0	0	0
008 PRECINCT 0158	52	32	20	0	0
009 PRECINCT 0159	36	24	12	0	0
010 PRECINCT 0300	4	2	2	0	0
011 PRECINCT 0332	29	19	10	0	0
012 PRECINCT 0424	32	20	12	0	0
013 PRECINCT 0432	24	17	7	0	0
014 PRECINCT 0433	18	10	8	0	0
015 PRECINCT 0500	0	0	0	0	0
016 PRECINCT 0503	0	0	0	0	0
017 PRECINCT 0521	27	11	16	0	0
018 PRECINCT 0541	0	0	0	0	0
019 PRECINCT 0542	1	1	0	0	0
020 PRECINCT 0543	5	3	1	0	1
021 PRECINCT 0546	0	0	0	0	0
022 PRECINCT 0547	0	0	0	0	0
023 PRECINCT 0548	4	3	1	0	0
024 PRECINCT 0590	4	3	1	0	0
025 PRECINCT 0601	0	0	0	0	0
026 PRECINCT 0603	0	0	0	0	0
027 PRECINCT 1001	108	75	32	0	1
028 PRECINCT 1002	39	27	11	0	1
029 PRECINCT 1013	284	189	89	0	6
030 PRECINCT 1017	214	137	74	0	3
031 PRECINCT 1019	422	265	153	0	4
032 PRECINCT 1025	189	143	45	0	1
033 PRECINCT 1028	134	100	29	0	5
034 PRECINCT 1031	206	130	75	0	1
035 PRECINCT 1043	232	161	63	0	8
036 PRECINCT 1045	83	58	25	0	0
037 PRECINCT 1049	215	160	51	0	4
038 PRECINCT 1053	164	123	37	0	4
039 PRECINCT 1101	187	125	61	0	1
040 PRECINCT 1103	192	152	38	0	2
041 PRECINCT 1117	120	81	39	0	0
042 PRECINCT 1118	261	189	62	0	10
043 PRECINCT 1143	296	201	92	0	3
044 PRECINCT 1155	86	60	25	0	1
045 PRECINCT 1156	439	294	142	0	3

MULTNOMAH E. S. D. P6 AT LARGE

V	C	R	C	U	O	W
O	A	O	H	N	V	R
T	S	N	I	D	E	I
E	T	N		E	R	T
S		N		R	V	E
				V	O	-
				O	T	I
				T	E	N
				E	S	S
				S		

All Districts

046	PRECINCT	1160	209	158	46	0	5
047	PRECINCT	1164	140	109	28	0	3
048	PRECINCT	1170	321	202	115	0	4
049	PRECINCT	1173	409	284	121	0	4
050	PRECINCT	1177	96	70	25	0	1
051	PRECINCT	1179	126	91	32	0	3
052	PRECINCT	1183	174	126	42	0	6
053	PRECINCT	1186	429	298	127	0	4
054	PRECINCT	1189	348	266	79	0	3
055	PRECINCT	1200	360	265	90	0	5
056	PRECINCT	1205	235	177	55	0	3
057	PRECINCT	1206	276	209	58	0	9
058	PRECINCT	1211	219	153	59	0	7
059	PRECINCT	1213	151	116	34	0	1
060	PRECINCT	1215	362	273	82	0	7
061	PRECINCT	1220	265	191	70	0	4
062	PRECINCT	1222	314	235	75	0	4
063	PRECINCT	1223	244	171	71	1	1
064	PRECINCT	1224	433	313	116	0	4
065	PRECINCT	1225	268	186	79	0	3
066	PRECINCT	1226	326	233	89	0	4
067	PRECINCT	1229	264	204	56	0	4
068	PRECINCT	1230	317	226	89	0	2
069	PRECINCT	1232	346	247	98	0	1
070	PRECINCT	1233	319	219	97	0	3
071	PRECINCT	1236	180	139	40	0	1
072	PRECINCT	1238	210	166	39	0	5
073	PRECINCT	1240	215	137	72	0	6
074	PRECINCT	1244	277	213	62	1	1
075	PRECINCT	1245	283	218	61	0	4
076	PRECINCT	1246	193	142	46	0	5
077	PRECINCT	1248	273	212	57	0	4
078	PRECINCT	1250	188	148	33	0	7
079	PRECINCT	1252	152	113	37	0	2
080	PRECINCT	1253	139	97	39	0	3
081	PRECINCT	1254	151	106	43	0	2
082	PRECINCT	1255	171	127	44	0	0
083	PRECINCT	1305	173	135	32	1	5
084	PRECINCT	1308	169	126	37	0	6
085	PRECINCT	1313	390	298	83	0	9
086	PRECINCT	1315	403	311	89	0	3
087	PRECINCT	1320	75	56	14	0	5
088	PRECINCT	1400	257	186	66	0	5
089	PRECINCT	1402	118	94	24	0	0

MULTNOMAH E.S.D. P6 AT LARGE

V	R	U	O	W
D	O	N	V	R
T	N	D	E	I
E	N	E	R	T
S	N	R	V	E
		V	O	-
		O	T	I
		T	E	N
		E	S	S

All Districts

090	PRECINCT	1500	20	14	5	0	1
091	PRECINCT	1503	173	125	45	0	3
092	PRECINCT	1504	124	92	31	0	1
093	PRECINCT	1505	510	233	272	0	5
094	PRECINCT	1507	66	47	19	0	0
095	PRECINCT	1515	333	239	92	0	2
096	PRECINCT	1546	343	264	79	0	0
097	PRECINCT	2002	199	163	28	0	8
098	PRECINCT	2005	254	208	33	1	12
099	PRECINCT	2015	308	244	59	0	5
100	PRECINCT	2018	246	188	53	0	5
101	PRECINCT	2023	234	194	34	0	6
102	PRECINCT	2026	186	141	39	0	6
103	PRECINCT	2027	205	166	31	0	8
104	PRECINCT	2029	261	207	45	0	9
105	PRECINCT	2034	103	80	21	1	1
106	PRECINCT	2043	247	187	49	1	10
107	PRECINCT	2049	222	174	42	0	6
108	PRECINCT	2051	322	227	83	1	11
109	PRECINCT	2061	311	244	62	0	5
110	PRECINCT	2077	312	244	60	0	8
111	PRECINCT	2083	70	53	14	0	3
112	PRECINCT	2086	247	187	53	0	7
113	PRECINCT	2099	224	167	52	0	5
114	PRECINCT	2100	302	220	74	1	7
115	PRECINCT	2109	267	214	42	0	11
116	PRECINCT	2114	277	202	62	0	13
117	PRECINCT	2118	262	211	48	0	3
118	PRECINCT	2139	171	125	39	0	7
119	PRECINCT	2142	242	174	64	0	4
120	PRECINCT	2143	152	114	34	0	4
121	PRECINCT	2144	170	132	36	1	1
122	PRECINCT	2145	184	148	31	1	4
123	PRECINCT	3000	227	166	53	0	8
124	PRECINCT	3001	213	168	42	0	3
125	PRECINCT	3002	220	179	37	0	4
126	PRECINCT	3004	296	213	75	0	8
127	PRECINCT	3008	277	223	50	0	4
128	PRECINCT	3021	271	201	61	0	9
129	PRECINCT	3026	181	139	37	0	5
130	PRECINCT	3027	191	144	47	0	0
131	PRECINCT	3032	254	195	50	0	9
132	PRECINCT	3039	153	117	33	0	3
133	PRECINCT	3042	184	128	53	0	3

MULTNOMAH E.S.D. P6 AT LARGE

V	R	U	O	W
O	O	N	V	R
T	N	D	E	I
E	N	E	R	T
S	N	R	V	E
		V	O	-
		O	T	I
		T	E	N
		E	S	S
		S		

All Districts

134	PRECINCT	3052	312	229	77	0	6
135	PRECINCT	3058	224	170	44	0	10
136	PRECINCT	3071	191	130	57	1	3
137	PRECINCT	3073	213	145	61	0	7
138	PRECINCT	3080	355	238	114	0	3
139	PRECINCT	3086	268	199	58	1	10
140	PRECINCT	3090	271	182	86	0	3
141	PRECINCT	3097	287	203	83	0	1
142	PRECINCT	3109	403	270	128	0	5
143	PRECINCT	3113	443	302	137	0	4
144	PRECINCT	3122	293	223	69	0	1
145	PRECINCT	3126	181	127	53	0	1
146	PRECINCT	3128	384	268	107	0	9
147	PRECINCT	3135	300	202	95	0	3
148	PRECINCT	3138	373	225	146	0	2
149	PRECINCT	3144	431	258	173	0	0
150	PRECINCT	3151	306	199	103	0	4
151	PRECINCT	3155	132	87	40	1	4
152	PRECINCT	3156	232	169	56	0	7
153	PRECINCT	3160	231	187	41	0	3
154	PRECINCT	3163	222	157	61	0	4
155	PRECINCT	3174	227	160	64	0	3
156	PRECINCT	3177	296	218	73	0	5
157	PRECINCT	3185	168	119	44	1	4
158	PRECINCT	3186	253	185	64	0	4
159	PRECINCT	3193	287	196	87	0	4
160	PRECINCT	3196	307	247	56	0	4
161	PRECINCT	3205	293	216	75	0	2
162	PRECINCT	3212	285	218	63	0	4
163	PRECINCT	3217	128	88	39	0	1
164	PRECINCT	3219	180	137	41	0	2
165	PRECINCT	3223	196	145	47	0	4
166	PRECINCT	3228	208	169	37	0	2
167	PRECINCT	3233	188	147	37	0	4
168	PRECINCT	3234	150	121	23	2	4
169	PRECINCT	3240	230	172	57	0	1
170	PRECINCT	3248	341	256	77	0	8
171	PRECINCT	3253	270	183	81	0	6
172	PRECINCT	3258	355	232	115	0	8
173	PRECINCT	3259	355	264	82	1	8
174	PRECINCT	3263	268	175	93	0	0
175	PRECINCT	3268	159	116	41	0	2
176	PRECINCT	3273	109	83	26	0	0
177	PRECINCT	3274	154	112	41	0	1

MULTNOMAH E.S.D. P6 AT LARGE

	V C O A T S E T S	R C O H N I N N N	U N D E R V O T E S	O V E R V O T E S	W R I T E - I N S
All Districts					
178 PRECINCT 3283	158	123	33	0	2
179 PRECINCT 3284	214	157	55	0	2
180 PRECINCT 3286	349	246	98	0	5
181 PRECINCT 3290	302	205	96	0	1
182 PRECINCT 3292	223	161	60	0	2
183 PRECINCT 3297	236	179	51	0	6
184 PRECINCT 3299	152	115	30	0	7
185 PRECINCT 3306	436	286	143	1	6
186 PRECINCT 3307	372	245	123	0	4
187 PRECINCT 3308	382	237	140	0	5
188 PRECINCT 3309	532	369	162	0	1
189 PRECINCT 3310	339	210	117	1	11
190 PRECINCT 3311	455	276	170	0	9
191 PRECINCT 3312	324	224	100	0	0
192 PRECINCT 3314	225	166	54	0	5
193 PRECINCT 3315	285	201	80	0	4
194 PRECINCT 3322	359	263	87	0	9
195 PRECINCT 3323	375	249	125	0	1
196 PRECINCT 3324	406	275	125	0	6
197 PRECINCT 3326	128	87	38	0	3
198 PRECINCT 3327	170	125	41	0	4
199 PRECINCT 3328	304	231	68	0	5
200 PRECINCT 3329	294	196	90	0	8
201 PRECINCT 3330	201	150	47	1	3
202 PRECINCT 3332	309	202	102	0	5
203 PRECINCT 3336	171	121	46	0	4
204 PRECINCT 3337	232	158	68	0	6
205 PRECINCT 3338	191	151	39	0	1
206 PRECINCT 3339	267	197	63	0	7
207 PRECINCT 4005	203	148	54	0	1
208 PRECINCT 4009	220	162	53	0	5
209 PRECINCT 4022	180	128	47	0	5
210 PRECINCT 4026	211	139	69	0	3
211 PRECINCT 4027	220	157	59	0	4
212 PRECINCT 4033	190	140	42	0	8
213 PRECINCT 4041	221	152	67	0	2
214 PRECINCT 4044	238	177	56	0	5
215 PRECINCT 4048	220	154	65	0	1
216 PRECINCT 4049	197	146	48	0	3
217 PRECINCT 4064	218	163	52	0	3
218 PRECINCT 4065	298	216	75	0	7
219 PRECINCT 4068	188	138	47	0	3
220 PRECINCT 4085	336	225	105	0	6
221 PRECINCT 4092	214	169	42	0	3

MULTNOMAH E.S.D. P6 AT LARGE

V C	R C	U	O	W
O A	O H	N	V	R
T S	N I	D	E	I
E T	N	E	R	T
S	N	R	V	E
		V	O	-
		O	T	I
		T	E	N
		E	S	S
		S		

All Districts

222	PRECINCT	4106	139	102	35	0	2
223	PRECINCT	4107	173	128	42	0	3
224	PRECINCT	4111	242	155	85	0	2
225	PRECINCT	4114	305	179	119	1	6
226	PRECINCT	4117	317	244	67	0	6
227	PRECINCT	4118	275	209	66	0	0
228	PRECINCT	4125	222	174	46	0	2
229	PRECINCT	4128	217	164	45	0	8
230	PRECINCT	4131	313	241	70	1	1
231	PRECINCT	4132	297	222	70	0	5
232	PRECINCT	4143	279	186	89	0	4
233	PRECINCT	4147	234	170	61	0	3
234	PRECINCT	4152	313	242	67	0	4
235	PRECINCT	4155	329	263	63	0	3
236	PRECINCT	4156	247	195	43	0	9
237	PRECINCT	4167	315	238	73	0	4
238	PRECINCT	4176	175	133	35	0	7
239	PRECINCT	4178	207	148	52	0	7
240	PRECINCT	4185	212	168	41	0	3
241	PRECINCT	4190	174	147	25	0	2
242	PRECINCT	4196	189	145	39	0	5
243	PRECINCT	4202	280	209	64	0	7
244	PRECINCT	4208	262	215	39	0	8
245	PRECINCT	4216	230	192	31	0	7
246	PRECINCT	4221	210	177	25	1	7
247	PRECINCT	4223	218	156	56	0	6
248	PRECINCT	4228	213	150	58	0	5
249	PRECINCT	4231	120	95	25	0	0
250	PRECINCT	4236	164	122	37	0	5
251	PRECINCT	4240	128	99	28	0	1
252	PRECINCT	4242	262	208	48	0	6
253	PRECINCT	4243	237	172	60	0	5
254	PRECINCT	4244	277	208	66	0	3
255	PRECINCT	4246	206	167	35	0	4
256	PRECINCT	4248	248	184	59	0	5
257	PRECINCT	4250	269	195	61	0	13
258	PRECINCT	4254	211	156	47	0	8
259	PRECINCT	4259	417	332	80	0	5
260	PRECINCT	4264	305	227	73	0	5
261	PRECINCT	4271	265	188	77	0	0
262	PRECINCT	4278	317	239	73	0	5
263	PRECINCT	4279	263	202	54	0	7
264	PRECINCT	4282	436	288	139	0	9
265	PRECINCT	4285	299	215	75	1	8

MULTNOMAH E. S. D. P6 AT LARGE

V	R	U	O	W
O	O	N	V	R
T	N	D	E	I
E	N	E	R	T
S	N	R	V	E
		V	O	-
		O	T	I
		T	E	N
		E	S	S
		S		

All Districts

266	PRECINCT	4295	287	231	48	0	8
267	PRECINCT	4296	42	23	17	0	2
268	PRECINCT	4297	225	192	29	0	4
269	PRECINCT	4298	182	149	27	0	6
270	PRECINCT	4299	159	130	23	0	6
271	PRECINCT	4307	242	167	69	0	6
272	PRECINCT	4309	179	110	64	0	5
273	PRECINCT	4313	221	153	64	0	4
274	PRECINCT	4319	365	270	89	0	6
275	PRECINCT	4320	86	67	18	0	1
276	PRECINCT	4324	204	155	47	0	2
277	PRECINCT	4325	307	210	90	0	7
278	PRECINCT	4329	126	87	37	0	2
279	PRECINCT	4330	97	73	20	0	4
280	PRECINCT	4333	303	225	76	0	2
281	PRECINCT	4337	227	160	63	0	4
282	PRECINCT	4338	120	83	37	0	0
283	PRECINCT	4339	158	125	27	0	6
284	PRECINCT	4340	188	152	34	0	2
285	PRECINCT	4341	194	133	59	0	2
286	PRECINCT	4342	204	150	50	0	4
287	PRECINCT	4343	144	92	52	0	0
288	PRECINCT	4344	209	157	48	0	4
289	PRECINCT	4345	170	95	72	0	3
290	PRECINCT	4346	114	84	26	0	4
291	PRECINCT	4347	140	88	52	0	0
292	PRECINCT	4348	179	119	59	0	1
293	PRECINCT	4349	239	166	67	0	6
294	PRECINCT	4350	195	133	60	0	2
295	PRECINCT	4351	220	170	48	0	2
296	PRECINCT	4352	166	121	42	0	3
297	PRECINCT	4353	133	101	30	0	2
298	PRECINCT	4354	117	81	36	0	0
299	PRECINCT	4355	230	167	62	0	1
300	PRECINCT	4356	188	135	46	0	7
301	PRECINCT	4357	154	106	43	1	4
302	PRECINCT	4358	236	164	68	0	4
303	PRECINCT	4359	218	165	46	0	7
304	PRECINCT	4360	161	124	37	0	0
305	PRECINCT	4361	156	110	40	0	6
306	PRECINCT	5029	216	135	78	0	3
307	PRECINCT	5100	174	131	39	0	4
308	PRECINCT	5101	169	129	36	0	4
309	PRECINCT	5200	328	169	151	0	8

MULTNOMAH E. S. D. P6 AT LARGE

V	R	U	O	W
O	O	N	V	R
T	N	D	E	I
E	N	E	R	T
S	N	R	V	E
		V	O	-
		O	T	I
		T	E	N
		E	S	S
		S		

All Districts

310	PRECINCT	5201	499	276	214	0	9
311	PRECINCT	5202	489	279	202	0	8
312	PRECINCT	5203	415	224	183	0	8
313	PRECINCT	5204	493	261	221	0	11
314	PRECINCT	5300	167	130	31	0	6
315	PRECINCT	5301	107	78	29	0	0
316	PRECINCT	5401	79	50	29	0	0
317	PRECINCT	5424	123	58	65	0	0
318	PRECINCT	5425	451	202	243	0	6
319	PRECINCT	5427	15	12	2	0	1
320	PRECINCT	5434	334	176	154	0	4
321	PRECINCT	5551	14	6	8	0	0
322	PRECINCT	5602	80	54	25	0	1
323	PRECINCT	5603	95	61	28	2	4
324	PRECINCT	5604	211	126	83	0	2
325	PRECINCT	5605	130	84	45	0	1
326	PRECINCT	5606	163	94	64	0	5
327	PRECINCT	5805	191	117	71	0	3
328	PRECINCT	5806	196	147	49	0	0
329	PRECINCT	5809	174	116	56	0	2
330	PRECINCT	5819	171	121	45	0	5
331	PRECINCT	5820	204	137	64	0	3
332	PRECINCT	5823	231	156	73	0	2
333	PRECINCT	5824	268	186	79	0	3
334	PRECINCT	5825	306	218	85	0	3
335	PRECINCT	5828	293	209	84	0	0
336	PRECINCT	5829	224	136	84	0	4
337	PRECINCT	5840	225	169	53	0	3
338	PRECINCT	5842	296	174	120	0	2
339	PRECINCT	5843	192	144	43	0	5
340	PRECINCT	5845	192	132	53	0	7
341	PRECINCT	5846	224	139	80	0	5
342	PRECINCT	5850	100	69	31	0	0
343	PRECINCT	5851	251	183	64	0	4
344	PRECINCT	5853	250	168	78	1	3
345	PRECINCT	5854	163	114	49	0	0
346	PRECINCT	5855	268	163	103	0	2
347	PRECINCT	5857	196	134	57	0	5
348	PRECINCT	5858	198	144	50	0	4
349	PRECINCT	5859	150	117	31	0	2
350	PRECINCT	5860	191	134	56	0	1
351	PRECINCT	5861	305	215	84	0	6
352	PRECINCT	5864	153	94	58	0	1
353	PRECINCT	5865	198	130	67	0	1

MULTNOMAH E.S.D. P6 AT LARGE

V	R	U	O	W
O	O	N	V	R
T	N	D	E	I
E	N	E	R	T
S	N	R	V	E
		V	O	-
		O	T	I
		T	E	N
		E	S	S
		S		

All Districts

354 PRECINCT 5866	345	218	123	0	4
355 PRECINCT 5867	53	39	13	0	1
356 PRECINCT 5868	217	172	40	0	5
357 PRECINCT 5869	184	134	48	0	2
358 PRECINCT 5870	131	95	30	0	6
359 PRECINCT 5871	159	118	37	0	4
360 PRECINCT 5872	151	127	23	0	1
361 PRECINCT 5873	219	177	35	0	7
362 PRECINCT 5874	174	132	41	1	0
363 PRECINCT 5875	140	110	30	0	0
364 PRECINCT 5876	287	190	96	0	1
365 PRECINCT 5900	185	144	39	0	2
366 PRECINCT 5901	131	86	45	0	0
367 PRECINCT 5902	107	77	28	0	2

All Districts

80107	57108	21593	29	1377
-------	-------	-------	----	------

RACE TOTALS

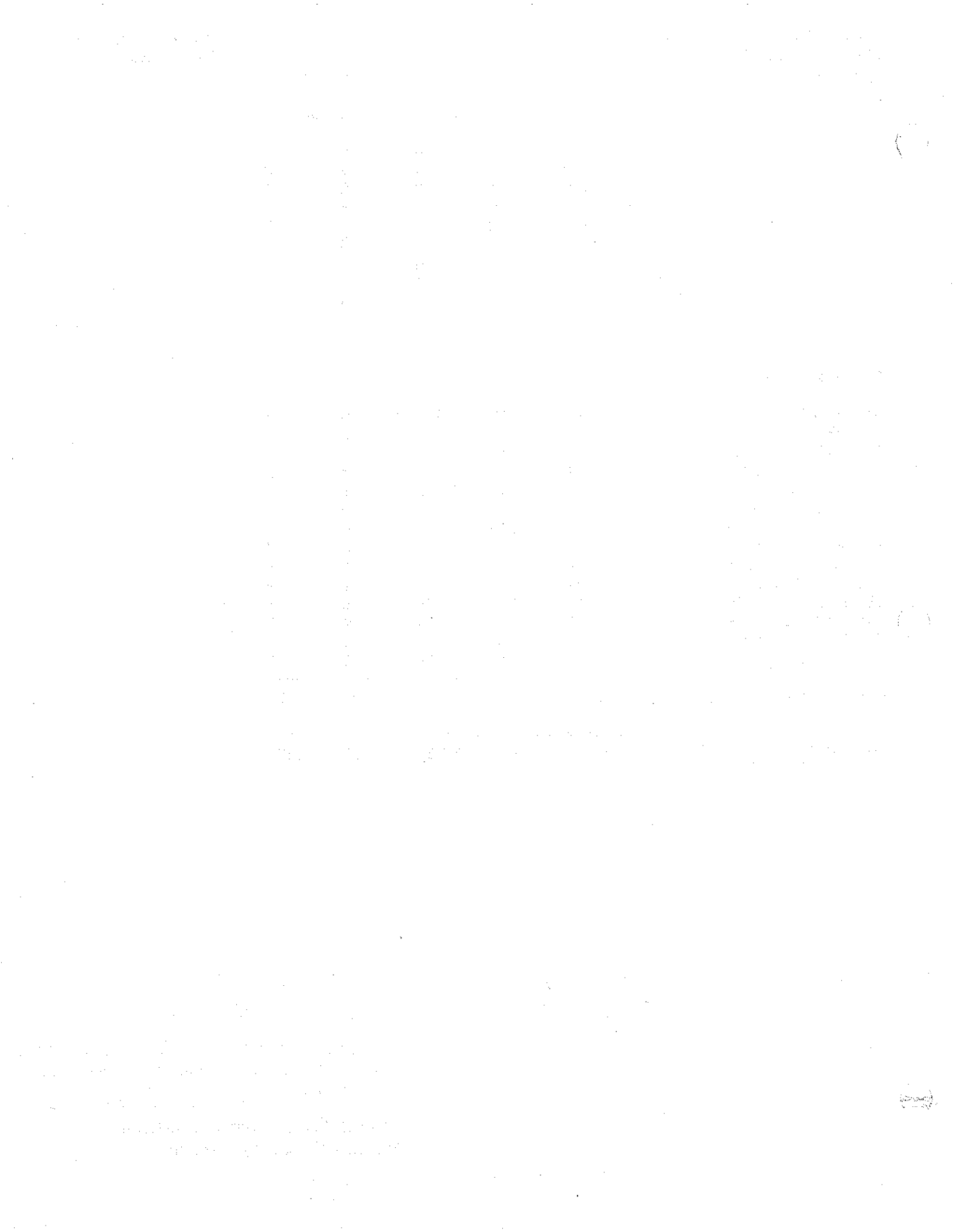
80107	57108	21593	29	1377
-------	-------	-------	----	------

Certificate

I certify that the votes recorded on this abstract correctly summarize the tally of votes cast at the election indicated.

Vicki K. Ervin

Vicki K. Ervin, Director of Elections
 Multnomah County, Oregon



MULTNOMAH E. S. D. P4 Z4

V C O A T S E T S	J H E A A L N I S K I	R M O c N C A R T Y	U N D E R V O T E S	O V E R V O T E S	W R I T E - I N S
-------------------------------	---	---------------------------------------	--	---	---

All Districts

010 PRECINCT 0300	4	1	3	0	0	0
011 PRECINCT 0332	29	12	14	3	0	0
016 PRECINCT 0503	0	0	0	0	0	0
018 PRECINCT 0541	0	0	0	0	0	0
023 PRECINCT 0548	4	0	4	0	0	0
026 PRECINCT 0603	0	0	0	0	0	0
123 PRECINCT 3000	227	122	84	18	0	3
124 PRECINCT 3001	203	104	86	12	0	1
125 PRECINCT 3002	220	119	91	7	0	3
152 PRECINCT 3156	232	124	97	10	1	0
153 PRECINCT 3160	231	127	98	4	0	2
154 PRECINCT 3163	222	97	112	12	0	1
156 PRECINCT 3177	296	178	94	20	1	3
157 PRECINCT 3185	168	84	81	1	0	2
158 PRECINCT 3186	253	148	88	16	0	1
163 PRECINCT 3217	128	67	50	10	0	1
164 PRECINCT 3219	180	85	82	12	0	1
165 PRECINCT 3223	95	59	32	2	0	2
166 PRECINCT 3228	198	118	72	6	0	2
167 PRECINCT 3233	188	89	91	5	2	1
168 PRECINCT 3234	150	79	65	4	1	1
169 PRECINCT 3240	230	129	92	9	0	0
183 PRECINCT 3297	27	13	13	1	0	0
185 PRECINCT 3306	436	237	155	43	1	0
186 PRECINCT 3307	372	187	119	66	0	0
187 PRECINCT 3308	382	193	148	38	2	1
189 PRECINCT 3310	339	199	114	20	1	5
190 PRECINCT 3311	455	236	180	36	1	2
191 PRECINCT 3312	324	163	129	28	1	3
192 PRECINCT 3314	225	111	103	9	0	2
193 PRECINCT 3315	285	155	108	22	0	0
194 PRECINCT 3322	4	3	1	0	0	0
195 PRECINCT 3323	331	181	124	25	0	1
196 PRECINCT 3324	406	218	137	47	0	4
197 PRECINCT 3326	128	62	52	12	0	2
198 PRECINCT 3327	170	80	76	11	0	3
199 PRECINCT 3328	304	151	133	17	0	3
200 PRECINCT 3329	221	110	90	19	0	2
202 PRECINCT 3332	309	158	126	25	0	0
204 PRECINCT 3337	218	100	93	23	0	2
220 PRECINCT 4085	268	152	98	17	0	1
221 PRECINCT 4092	214	108	91	13	2	0
226 PRECINCT 4117	317	158	141	14	1	3
227 PRECINCT 4118	275	166	90	17	1	1

MULTNOMAH E. S. D. P4 Z4

V C	J H	R M	U	O	W
O A	E A	O c	N	V	R
T S	A L	N C	D	E	I
E T	N I	A	E	R	T
S	S	R	R	V	E
	K	T	V	O	-
	I	Y	O	T	I
			T	E	N
			S	S	S

All Districts

228	PRECINCT 4125	222	111	100	10	0	1
229	PRECINCT 4128	217	106	99	9	0	3
230	PRECINCT 4131	1	0	1	0	0	0
234	PRECINCT 4152	19	18	1	0	0	0
235	PRECINCT 4155	329	156	154	16	0	3
236	PRECINCT 4156	123	71	43	9	0	0
241	PRECINCT 4190	174	85	83	5	0	1
242	PRECINCT 4196	189	87	89	10	1	2
245	PRECINCT 4216	219	105	103	9	1	1
268	PRECINCT 4297	137	74	55	6	0	2
271	PRECINCT 4307	242	120	102	18	0	2
272	PRECINCT 4309	179	95	61	22	0	1
273	PRECINCT 4313	221	114	88	18	0	1
274	PRECINCT 4319	365	189	149	22	0	5
275	PRECINCT 4320	86	37	45	3	0	1
276	PRECINCT 4324	204	105	91	8	0	0
278	PRECINCT 4329	126	53	61	10	1	1
279	PRECINCT 4330	97	55	28	11	0	3
280	PRECINCT 4333	303	148	138	15	1	1
281	PRECINCT 4337	227	115	93	16	0	3
283	PRECINCT 4339	158	93	59	4	0	2
284	PRECINCT 4340	188	99	82	6	0	1
285	PRECINCT 4341	194	90	90	13	1	0
290	PRECINCT 4346	98	44	39	13	0	2
295	PRECINCT 4351	220	105	97	16	0	2
297	PRECINCT 4353	133	47	71	14	0	1
298	PRECINCT 4354	81	35	32	14	0	0
303	PRECINCT 4359	218	98	95	23	0	2
304	PRECINCT 4360	161	75	69	17	0	0
305	PRECINCT 4361	156	74	63	17	0	2
306	PRECINCT 5029	216	140	56	18	2	0
321	PRECINCT 5551	14	4	5	5	0	0
322	PRECINCT 5602	0	0	0	0	0	0

All Districts	14785	7631	5999	1031	22	102
---------------	-------	------	------	------	----	-----

RACE TOTALS	14785	7631	5999	1031	22	102
-------------	-------	------	------	------	----	-----

Certificate

I certify that the votes recorded on this abstract correctly summarize the tally of votes cast at the election indicated.

Vicki K. Ewing
 Vicki K. Ewing, Director of Elections
 Multnomah County, Oregon

**** OFFICIAL STATEMENT OF VOTES FOR THE SPECIAL DISTRICT ELECTION ON MARCH 11, 1997 ****
 MULTNOMAH ESD DIRECTOR - ZONE 2, POS 3

Page Number 13.001.001

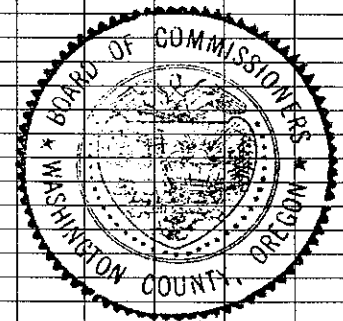
REG
I
S
T
E
R
E
D
V
O
T
E
R
S

T
U
R
N
O
U
T

T
U
R
N
O
U
T
P
E
R
C
E
N
T
A
G
E

M
E
G
B
U
S
H
M
A
N
E
S
D

066 RALEIGH PK SCH	637	123	19.3%	68
069 W SYLVAN SCHOOL	1223	236	19.2%	98
092 RALEIGH PK SCH	1090	289	26.5%	13
209 WASH CO ELECTIONS	77	11	14.2%	0
236 WASH CO ELECTIONS	51	3	5.8%	3
**** TOTALS ****	3078	662	21.5%	182



MULTNOMAH E. S. D. P2 AT LARGE

	V O T E S	S K Y R N B R O D T	U N D E R V O T E S	O V E R V O T E S	W R I T E - I N S
All Districts					
001 PRECINCT 0102	234	167	65	0	2
002 PRECINCT 0103	1	0	1	0	0
003 PRECINCT 0104	3	1	2	0	0
005 PRECINCT 0151	5	5	0	0	0
006 PRECINCT 0156	23	16	7	0	0
007 PRECINCT 0157	7	5	1	0	1
008 PRECINCT 0158	52	31	21	0	0
009 PRECINCT 0159	36	26	10	0	0
010 PRECINCT 0300	4	2	2	0	0
011 PRECINCT 0332	29	19	10	0	0
012 PRECINCT 0424	32	21	11	0	0
013 PRECINCT 0432	24	17	7	0	0
014 PRECINCT 0433	18	10	8	0	0
015 PRECINCT 0500	0	0	0	0	0
016 PRECINCT 0503	0	0	0	0	0
017 PRECINCT 0521	27	10	17	0	0
018 PRECINCT 0541	0	0	0	0	0
019 PRECINCT 0542	1	1	0	0	0
020 PRECINCT 0543	5	3	1	0	1
021 PRECINCT 0546	0	0	0	0	0
022 PRECINCT 0547	0	0	0	0	0
023 PRECINCT 0548	4	3	1	0	0
024 PRECINCT 0590	4	3	1	0	0
025 PRECINCT 0601	0	0	0	0	0
026 PRECINCT 0603	0	0	0	0	0
027 PRECINCT 1001	108	77	30	0	1
028 PRECINCT 1002	39	29	9	0	1
029 PRECINCT 1013	284	189	90	0	5
030 PRECINCT 1017	214	138	72	0	4
031 PRECINCT 1019	422	267	148	0	7
032 PRECINCT 1025	189	143	44	0	2
033 PRECINCT 1028	134	102	27	0	5
034 PRECINCT 1031	206	134	70	1	1
035 PRECINCT 1043	232	161	64	0	7
036 PRECINCT 1045	83	58	25	0	0
037 PRECINCT 1049	215	166	46	0	3
038 PRECINCT 1053	164	127	33	0	4
039 PRECINCT 1101	187	125	59	0	3
040 PRECINCT 1103	192	153	38	0	1
041 PRECINCT 1117	120	79	40	0	1
042 PRECINCT 1118	261	190	60	0	11
043 PRECINCT 1143	296	202	91	0	3
044 PRECINCT 1155	86	59	25	0	2
045 PRECINCT 1156	439	290	142	0	7

MULTNOMAH E.S.D. P2 AT LARGE

V C	S K	U	O	W
O A	Y O	N	V	R
T S	R	D	E	I
E T	N	E	R	T
S	B	R	V	E
	R	V	O	-
	O	O	T	I
	D	T	E	N
	T	E	S	S
		S		

All Districts

046 PRECINCT 1160	209	159	44	0	6
047 PRECINCT 1164	140	106	30	0	4
048 PRECINCT 1170	321	197	116	0	8
049 PRECINCT 1173	409	281	124	0	4
050 PRECINCT 1177	96	69	25	0	2
051 PRECINCT 1179	126	94	28	0	4
052 PRECINCT 1183	174	123	43	0	8
053 PRECINCT 1186	429	297	125	0	7
054 PRECINCT 1189	348	271	73	0	4
055 PRECINCT 1200	360	259	95	0	6
056 PRECINCT 1205	235	175	55	0	5
057 PRECINCT 1206	276	206	63	0	7
058 PRECINCT 1211	219	157	53	0	9
059 PRECINCT 1213	151	114	34	0	3
060 PRECINCT 1215	362	266	90	0	6
061 PRECINCT 1220	265	193	67	0	5
062 PRECINCT 1222	314	230	81	0	3
063 PRECINCT 1223	244	167	73	0	4
064 PRECINCT 1224	433	314	111	0	8
065 PRECINCT 1225	268	196	69	0	3
066 PRECINCT 1226	326	236	87	0	3
067 PRECINCT 1229	264	192	64	1	7
068 PRECINCT 1230	317	227	85	0	5
069 PRECINCT 1232	346	249	93	0	4
070 PRECINCT 1233	319	221	93	1	4
071 PRECINCT 1236	180	135	44	0	1
072 PRECINCT 1238	210	165	38	2	5
073 PRECINCT 1240	215	141	68	0	6
074 PRECINCT 1244	277	211	61	1	4
075 PRECINCT 1245	283	214	64	0	5
076 PRECINCT 1246	193	139	48	2	4
077 PRECINCT 1248	273	208	59	1	5
078 PRECINCT 1250	188	139	38	0	11
079 PRECINCT 1252	152	113	36	0	3
080 PRECINCT 1253	139	94	41	0	4
081 PRECINCT 1254	151	101	49	0	1
082 PRECINCT 1255	171	122	48	0	1
083 PRECINCT 1305	173	132	33	1	7
084 PRECINCT 1308	169	134	30	0	5
085 PRECINCT 1313	390	289	89	0	12
086 PRECINCT 1315	403	312	86	0	5
087 PRECINCT 1320	75	56	13	0	6
088 PRECINCT 1400	257	194	56	0	7
089 PRECINCT 1402	118	96	22	0	2

MULTNOMAH E.S.D. P2 AT LARGE

V C	S K	U	O	W
O A	Y O	N	V	R
T S	R	D	E	I
E T	N	E	R	T
S	B	R	V	E
	R	V	O	-
	O	O	T	I
	D	T	E	N
	T	E	S	S
		S		

All Districts

090	PRECINCT 1500	20	13	6	0	1
091	PRECINCT 1503	173	126	44	0	3
092	PRECINCT 1504	124	91	30	0	3
093	PRECINCT 1505	510	226	279	0	5
094	PRECINCT 1507	66	44	21	0	1
095	PRECINCT 1515	333	230	96	0	7
096	PRECINCT 1546	343	266	76	1	0
097	PRECINCT 2002	199	155	33	0	11
098	PRECINCT 2005	254	211	29	0	14
099	PRECINCT 2015	308	240	61	0	7
100	PRECINCT 2018	246	190	49	1	6
101	PRECINCT 2023	234	199	29	0	6
102	PRECINCT 2026	186	141	39	0	6
103	PRECINCT 2027	205	162	33	0	10
104	PRECINCT 2029	261	206	43	2	10
105	PRECINCT 2034	103	80	22	0	1
106	PRECINCT 2043	247	185	51	1	10
107	PRECINCT 2049	222	184	36	0	2
108	PRECINCT 2051	322	237	77	0	8
109	PRECINCT 2061	311	252	52	0	7
110	PRECINCT 2077	312	235	64	1	12
111	PRECINCT 2083	70	56	12	0	2
112	PRECINCT 2086	247	188	50	0	9
113	PRECINCT 2099	224	160	58	0	6
114	PRECINCT 2100	302	222	74	0	6
115	PRECINCT 2109	267	215	40	0	12
116	PRECINCT 2114	277	205	61	0	11
117	PRECINCT 2118	262	203	54	0	5
118	PRECINCT 2139	171	123	44	0	4
119	PRECINCT 2142	242	171	65	0	6
120	PRECINCT 2143	152	115	31	0	6
121	PRECINCT 2144	170	131	37	0	2
122	PRECINCT 2145	184	153	25	0	6
123	PRECINCT 3000	227	166	53	0	8
124	PRECINCT 3001	213	163	45	0	5
125	PRECINCT 3002	220	179	37	0	4
126	PRECINCT 3004	296	214	75	0	7
127	PRECINCT 3008	277	215	57	0	5
128	PRECINCT 3021	271	202	58	0	11
129	PRECINCT 3026	181	132	38	0	11
130	PRECINCT 3027	191	143	45	0	3
131	PRECINCT 3032	254	193	54	0	7
132	PRECINCT 3039	153	116	33	0	4
133	PRECINCT 3042	184	131	48	1	4

MULTNOMAH E.S.D. P2 AT LARGE

V	S	U	O	W
O	K	N	V	R
T	Y	D	E	I
S	R	E	R	T
E	N	R	V	E
T	B	V	O	-
S	R	O	T	I
	O	O	T	N
	D	T	E	S
	T	E	S	S
		S		

All Districts

134	PRECINCT	3052	312	234	72	0	6
135	PRECINCT	3058	224	162	49	0	13
136	PRECINCT	3071	191	123	62	1	5
137	PRECINCT	3073	213	146	62	0	5
138	PRECINCT	3080	355	242	109	0	4
139	PRECINCT	3086	268	206	52	1	9
140	PRECINCT	3090	271	186	70	0	7
141	PRECINCT	3097	287	199	81	1	6
142	PRECINCT	3109	403	278	117	0	8
143	PRECINCT	3113	443	298	140	0	5
144	PRECINCT	3122	293	219	72	1	1
145	PRECINCT	3126	181	123	57	0	1
146	PRECINCT	3128	384	283	89	0	12
147	PRECINCT	3135	300	215	83	0	2
148	PRECINCT	3138	373	223	146	0	4
149	PRECINCT	3144	431	266	162	0	3
150	PRECINCT	3151	306	194	101	0	11
151	PRECINCT	3155	132	89	36	0	7
152	PRECINCT	3156	232	173	54	0	5
153	PRECINCT	3160	231	185	42	1	3
154	PRECINCT	3163	222	154	66	0	2
155	PRECINCT	3174	227	156	62	1	8
156	PRECINCT	3177	296	220	68	1	7
157	PRECINCT	3185	168	119	45	0	4
158	PRECINCT	3186	253	193	57	0	3
159	PRECINCT	3193	287	207	77	0	3
160	PRECINCT	3196	307	243	58	1	5
161	PRECINCT	3205	293	217	74	0	2
162	PRECINCT	3212	285	215	65	1	4
163	PRECINCT	3217	128	88	39	0	1
164	PRECINCT	3219	180	134	45	0	1
165	PRECINCT	3223	196	147	44	0	5
166	PRECINCT	3228	208	167	37	0	4
167	PRECINCT	3233	188	147	37	3	1
168	PRECINCT	3234	150	121	26	0	3
169	PRECINCT	3240	230	171	54	0	5
170	PRECINCT	3248	341	252	79	0	10
171	PRECINCT	3253	270	184	77	2	7
172	PRECINCT	3258	355	236	111	0	8
173	PRECINCT	3259	355	272	74	1	8
174	PRECINCT	3263	268	175	92	0	1
175	PRECINCT	3268	159	106	47	1	5
176	PRECINCT	3273	109	82	27	0	0
177	PRECINCT	3274	154	116	27	0	1

MULTNOMAH E.S.D. P2 AT LARGE

V	S	U	O	W
O	K	N	V	R
A	Y	D	E	I
T	R	E	R	T
S	N	R	V	E
	B	V	O	-
	R	O	T	I
	O	O	E	N
	D	T	S	S
	T	E		
		S		

All Districts

178	PRECINCT	3283	158	120	36	0	2
179	PRECINCT	3284	214	158	53	0	3
180	PRECINCT	3286	349	251	92	0	6
181	PRECINCT	3290	302	204	96	0	2
182	PRECINCT	3292	223	157	61	0	5
183	PRECINCT	3297	236	171	55	2	8
184	PRECINCT	3299	152	116	29	0	7
185	PRECINCT	3306	436	283	144	0	9
186	PRECINCT	3307	372	239	127	0	6
187	PRECINCT	3308	382	230	145	1	6
188	PRECINCT	3309	532	377	153	0	2
189	PRECINCT	3310	339	208	117	2	12
190	PRECINCT	3311	455	283	164	0	8
191	PRECINCT	3312	324	217	99	0	8
192	PRECINCT	3314	225	165	51	0	9
193	PRECINCT	3315	285	201	75	0	9
194	PRECINCT	3322	359	262	88	0	9
195	PRECINCT	3323	375	243	127	0	5
196	PRECINCT	3324	406	274	126	1	5
197	PRECINCT	3326	128	89	36	0	3
198	PRECINCT	3327	170	132	35	0	3
199	PRECINCT	3328	304	228	67	0	9
200	PRECINCT	3329	294	199	84	1	10
201	PRECINCT	3330	201	150	46	0	5
202	PRECINCT	3332	309	202	103	1	3
203	PRECINCT	3336	171	119	49	1	2
204	PRECINCT	3337	232	159	66	0	7
205	PRECINCT	3338	191	149	40	0	2
206	PRECINCT	3339	267	187	71	0	9
207	PRECINCT	4005	203	151	51	0	1
208	PRECINCT	4009	220	169	47	0	4
209	PRECINCT	4022	180	125	48	0	7
210	PRECINCT	4026	211	136	69	0	6
211	PRECINCT	4027	220	163	54	0	3
212	PRECINCT	4033	190	139	40	0	11
213	PRECINCT	4041	221	147	70	0	4
214	PRECINCT	4044	238	188	46	0	4
215	PRECINCT	4048	220	153	67	0	0
216	PRECINCT	4049	197	136	56	0	5
217	PRECINCT	4064	218	164	51	0	3
218	PRECINCT	4065	298	215	72	0	11
219	PRECINCT	4068	188	139	43	0	6
220	PRECINCT	4085	336	229	100	0	7
221	PRECINCT	4092	214	165	45	0	4

MULTNOMAH E. S. D. P2 AT LARGE

V O T E S	C O U N T Y	S K Y R N B R O O D T	U N D E R V O T E S	O V E R V O T E S	W R I T E - I N S
-----------------------	----------------------------	---	--	---	---

All Districts

222	PRECINCT	4106	139	99	38	0	2
223	PRECINCT	4107	173	121	47	0	5
224	PRECINCT	4111	242	153	86	0	3
225	PRECINCT	4114	305	194	107	0	4
226	PRECINCT	4117	317	246	66	0	5
227	PRECINCT	4118	275	203	67	0	5
228	PRECINCT	4125	222	176	41	0	5
229	PRECINCT	4128	217	157	47	0	13
230	PRECINCT	4131	313	237	72	0	4
231	PRECINCT	4132	297	221	75	0	1
232	PRECINCT	4143	279	186	86	0	7
233	PRECINCT	4147	234	177	50	0	7
234	PRECINCT	4152	313	244	61	0	8
235	PRECINCT	4155	329	261	60	0	8
236	PRECINCT	4156	247	194	42	0	11
237	PRECINCT	4167	315	232	74	0	9
238	PRECINCT	4176	175	134	35	0	6
239	PRECINCT	4178	207	154	51	0	2
240	PRECINCT	4185	212	169	38	0	5
241	PRECINCT	4190	174	145	25	1	3
242	PRECINCT	4196	189	143	42	0	4
243	PRECINCT	4202	280	209	65	1	5
244	PRECINCT	4208	262	214	39	0	9
245	PRECINCT	4216	230	199	26	0	5
246	PRECINCT	4221	210	180	25	0	5
247	PRECINCT	4223	218	154	56	0	8
248	PRECINCT	4228	213	148	54	0	11
249	PRECINCT	4231	120	89	29	0	2
250	PRECINCT	4236	164	123	36	0	5
251	PRECINCT	4240	128	100	25	1	2
252	PRECINCT	4242	262	207	49	0	6
253	PRECINCT	4243	237	172	61	0	4
254	PRECINCT	4244	277	206	67	0	4
255	PRECINCT	4246	206	163	37	0	6
256	PRECINCT	4248	248	187	55	0	6
257	PRECINCT	4250	269	201	58	0	10
258	PRECINCT	4254	211	153	49	0	9
259	PRECINCT	4259	417	321	87	0	9
260	PRECINCT	4264	305	218	80	0	7
261	PRECINCT	4271	265	182	80	0	3
262	PRECINCT	4278	317	241	70	1	5
263	PRECINCT	4279	263	196	57	0	10
264	PRECINCT	4282	436	293	132	0	11
265	PRECINCT	4285	299	219	71	0	9

MULTNOMAH E.S.D. P2 AT LARGE

V	C	S	K	U	O	W
O	A	Y	O	N	V	R
T	S	R		D	E	I
E	T	N		E	R	T
S		B		R	V	E
		R		V	O	-
		O		O	T	I
		D		T	E	N
		T		E	S	S
				S		

All Districts

266	PRECINCT	4295	287	232	49	0	6
267	PRECINCT	4296	42	25	15	0	2
268	PRECINCT	4297	225	191	30	0	4
269	PRECINCT	4298	182	143	28	1	10
270	PRECINCT	4299	159	127	25	0	7
271	PRECINCT	4307	242	167	71	0	4
272	PRECINCT	4309	179	106	67	0	6
273	PRECINCT	4313	221	150	68	0	3
274	PRECINCT	4319	365	267	90	1	7
275	PRECINCT	4320	86	68	16	0	2
276	PRECINCT	4324	204	152	48	0	4
277	PRECINCT	4325	307	207	96	0	4
278	PRECINCT	4329	126	87	37	0	2
279	PRECINCT	4330	97	69	22	1	5
280	PRECINCT	4333	303	226	75	0	2
281	PRECINCT	4337	227	165	55	0	7
282	PRECINCT	4338	120	85	34	0	1
283	PRECINCT	4339	158	126	27	0	5
284	PRECINCT	4340	188	154	31	0	3
285	PRECINCT	4341	194	134	55	0	5
286	PRECINCT	4342	204	151	47	0	6
287	PRECINCT	4343	144	95	48	0	1
288	PRECINCT	4344	209	160	45	0	4
289	PRECINCT	4345	170	102	64	0	4
290	PRECINCT	4346	114	81	30	0	3
291	PRECINCT	4347	140	89	50	0	1
292	PRECINCT	4348	179	125	53	0	1
293	PRECINCT	4349	239	170	61	0	8
294	PRECINCT	4350	195	130	62	0	3
295	PRECINCT	4351	220	173	44	0	3
296	PRECINCT	4352	166	122	42	0	2
297	PRECINCT	4353	133	97	33	0	3
298	PRECINCT	4354	117	83	34	0	0
299	PRECINCT	4355	230	165	64	0	1
300	PRECINCT	4356	188	136	47	0	5
301	PRECINCT	4357	154	108	43	0	3
302	PRECINCT	4358	236	153	77	0	6
303	PRECINCT	4359	218	159	53	0	6
304	PRECINCT	4360	161	126	35	0	0
305	PRECINCT	4361	156	114	38	0	4
306	PRECINCT	5029	216	134	78	0	4
307	PRECINCT	5100	174	131	39	0	4
308	PRECINCT	5101	169	131	35	0	3
309	PRECINCT	5200	328	173	144	0	11

MULTNOMAH E.S.D. P2 AT LARGE

V C S K U O W
 O A Y O N V R
 T S R D E I
 E T N E R R T
 S B R V O E
 R O O T I
 O D T E N
 T E S S S

All Districts

310	PRECINCT	5201	499	279	211	0	9
311	PRECINCT	5202	489	279	199	1	10
312	PRECINCT	5203	415	224	179	0	12
313	PRECINCT	5204	493	262	222	2	7
314	PRECINCT	5300	167	125	35	0	7
315	PRECINCT	5301	107	75	32	0	0
316	PRECINCT	5401	79	52	27	0	0
317	PRECINCT	5424	123	54	68	0	1
318	PRECINCT	5425	451	201	244	0	6
319	PRECINCT	5427	15	13	2	0	0
320	PRECINCT	5434	334	182	149	0	3
321	PRECINCT	5551	14	6	8	0	0
322	PRECINCT	5602	80	53	26	0	1
323	PRECINCT	5603	95	62	26	2	5
324	PRECINCT	5604	211	125	82	0	4
325	PRECINCT	5605	130	81	49	0	0
326	PRECINCT	5606	163	96	63	0	4
327	PRECINCT	5805	191	118	69	0	4
328	PRECINCT	5806	196	148	48	0	0
329	PRECINCT	5809	174	117	55	0	2
330	PRECINCT	5819	171	121	45	0	5
331	PRECINCT	5820	204	125	70	1	8
332	PRECINCT	5823	231	152	77	0	2
333	PRECINCT	5824	268	187	77	0	4
334	PRECINCT	5825	306	216	88	0	2
335	PRECINCT	5828	293	214	77	0	2
336	PRECINCT	5829	224	133	85	0	6
337	PRECINCT	5840	225	166	57	0	2
338	PRECINCT	5842	296	180	114	0	2
339	PRECINCT	5843	192	139	46	0	7
340	PRECINCT	5845	192	137	45	1	9
341	PRECINCT	5846	224	138	81	0	5
342	PRECINCT	5850	100	70	29	0	1
343	PRECINCT	5851	251	183	64	1	3
344	PRECINCT	5853	250	165	83	0	2
345	PRECINCT	5854	163	109	53	0	1
346	PRECINCT	5855	268	162	103	0	3
347	PRECINCT	5857	196	132	56	0	8
348	PRECINCT	5858	198	144	49	0	5
349	PRECINCT	5859	150	114	31	3	2
350	PRECINCT	5860	191	139	52	0	0
351	PRECINCT	5861	305	216	84	1	4
352	PRECINCT	5864	153	96	57	0	0
353	PRECINCT	5865	19A	123	72	0	2

MULTNOMAH E.S.D. P2 AT LARGE

V C S K U O W
 O A Y O N V R
 T S R D E I
 E T N E R T
 S B R V E
 R V O -
 O O T I
 D T E N
 T E S S

All Districts

354 PRECINCT 5866	345	207	132	0	6
355 PRECINCT 5867	53	35	17	0	1
356 PRECINCT 5868	217	169	40	0	8
357 PRECINCT 5869	184	129	53	0	2
358 PRECINCT 5870	131	92	33	0	6
359 PRECINCT 5871	159	128	28	0	3
360 PRECINCT 5872	151	124	24	0	3
361 PRECINCT 5873	219	171	36	0	12
362 PRECINCT 5874	174	133	41	0	0
363 PRECINCT 5875	140	102	36	0	2
364 PRECINCT 5876	287	184	102	0	1
365 PRECINCT 5900	185	144	39	0	2
366 PRECINCT 5901	131	79	49	0	3
367 PRECINCT 5902	107	83	22	0	2

All Districts 80107 56953 21406 61 1687

RACE TOTALS 80107 56953 21406 61 1687

Certificate

I certify that the votes recorded on this abstract correctly summarize the tally of votes cast at the election indicated.

Vicki K. Ervin
 Vicki K. Ervin, Director of Elections
 Multnomah County, Oregon



**** OFFICIAL STATEMENT OF VOTES FOR THE SPECIAL DISTRICT ELECTION ON MARCH 11, 1997 ****
 MULTNOMAH ESD DIRECTOR - AT LARGE, POS 2

Page Number 12.001.001

	REGI STERED VOTERS	TURN OUT	TURN OUT PER CENT AGE	M S Y K O R N B R O D T M U L T N O M A H E S D																
066 RALEIGH PK SCH	637	123	19.3%	77																
069 W SYLVAN SCHOOL	1223	236	19.2%	121																
092 RALEIGH PK SCH	1090	289	26.5%	20																
209 WASH CO ELECTIONS	77	11	14.2%	0																
236 WASH CO ELECTIONS	51	3	5.8%	3																
**** T O T A L S ****	3078	662	21.5%	221																

CERTIFIED TO BE A TRUE AND
 CORRECT COPY OF THE ORIGINAL

Date March 17, 1997
 WASHINGTON COUNTY
 ELECTIONS DIVISION

BY M. Kantar



** OFFICIAL CANVASS WITH OVER AND UNDER VOTES **

CLACKAMAS COUNTY
SPECIAL ELECTION
MARCH 11, 1997

 * I, JOHN KAUFFMAN, COUNTY CLERK, CERTIFY THAT THE VOTES * BY : *John Kauffman* * DATE OF ABSTRACT : *
 * RECORDED ON THIS ABSTRACT CORRECTLY SUMMARIZE THE * * *
 * RESULT OF VOTES CAST AT THE ELECTION INDICATED. * * *

 * March 20, 1997 *

MULTNOMAH COUNTY ESD (ZONE 5) (JT) DIRECTOR POSITION 1 FOUR YEAR TERM
A -- PATRICIA SWANSON

Precinct	A	under	total
0094	1	0	1
0390	81	157	238
0391	92	126	218
0393	112	215	327
0394	158	322	480
0401	105	165	270
0403	79	94	173
0404	59	61	120
0405	151	208	359
0407	3	5	8
0443	44	95	139
0444	17	33	50
TOTAL	902	1,481	2,383

CLACKAMAS COUNTY
 SPECIAL ELECTION
 MARCH 11, 1997

 * I, JOHN KAUFFMAN, COUNTY CLERK, CERTIFY THAT THE VOTES * BY : * DATE OF ABSTRACT : *
 * RECORDED ON THIS ABSTRACT CORRECTLY SUMMARIZE THE * * *
 * RESULT OF VOTES CAST AT THE ELECTION INDICATED. * * *

 * March 20, 1997 *

John Kauffman

MULTNOMAH COUNTY ESD (JT) DIRECTOR AT LARGE POSITION 2 FOUR YEAR TERM
 A -- SY KORNBRODT
 MULTNOMAH COUNTY ESD (JT) DIRECTOR AT LARGE POSITION 6 TWO YEAR REMAINDER UNEXPIRED TERM
 B -- RON CHINN

Precinct	A	under	total	B	under	total
0091	21	41	62	20	42	62
0094	1	0	1	1	0	1
0167	6	10	16	5	11	16
0313	6	17	23	5	18	23
0390	77	161	238	80	158	238
0391	92	126	218	90	128	218
0393	111	216	327	109	218	327
0394	149	331	480	148	332	480
0401	107	163	270	111	159	270
0403	67	106	173	68	105	173
0404	53	67	120	54	66	120
0405	132	227	359	136	223	359
0407	4	4	8	4	4	8
0443	43	96	139	43	96	139
0444	14	36	50	13	37	50
TOTAL	883	1,601	2,484	887	1,597	2,484