

16

ESF 16 – Law Enforcement

THIS PAGE LEFT BLANK INTENTIONALLY

Table of Contents

1	Introduction	1
1.1	Purpose and Scope.....	1
1.2	Relationship to Other ESF Annexes.....	1
1.3	Policies and Agreements	2
2	Situation and Assumptions	2
2.1	Situation	2
2.2	Assumptions	2
3	Roles and Responsibilities	3
3.1	Primary Agency.....	3
3.1.1	Sheriff's Office	3
3.2	Supporting Agencies	3
3.2.1	Multnomah County Emergency Management.....	3
3.2.2	Department of Community Justice.....	4
3.2.3	District Attorney	4
3.2.4	County Roads.....	4
3.2.5	Health Department	4
3.3	Cooperating Agencies.....	4
3.3.1	City Police Departments	4
3.3.2	Oregon State Police	5
3.3.3	Oregon State Sheriff's	5
3.3.5	Volunteer Fire Departments.....	5
3.3.6	City Fire Departments.....	5
3.3.7	AMR	5
3.3.8	ODOT	5
3.3.9	TITAN Fusion Center.....	5
4	Concept of Operations	6
4.1	General	6
4.2	Notifications	6
4.3	Actions by Phase of Emergency Management	7
4.3.1	Preparedness	7
4.3.2	Response	8
4.3.3	Recovery	8
4.3.4	Mitigation	9
5	ESF Annex Development and Maintenance.....	9

6 Supporting Documents9

7 Appendices9

THIS PAGE LEFT BLANK INTENTIONALLY

ESF 16 Tasked Agencies	
Primary Agencies	Sheriff's Office
Supporting Agencies	Multnomah County Emergency Management Department of Community Justice District Attorney County Roads Multnomah County Health Department
Cooperating Agencies	Portland Police Bureau Gresham Police Department Oregon State Police Oregon State Sheriff's Corbett Fire Sauvie Island (SI) Fire Portland Fire and Rescue Gresham Fire and Rescue American Medical Response (AMR) Oregon Department of Transportation (ODOT) TITAN Fusion Center

1 Introduction

1.1 Purpose and Scope

Emergency Support Function (ESF) 16 coordinates law enforcement personnel and equipment to support emergency response operations. This support function is inclusive of general law enforcement duties, emergency police, and public safety services. Local law enforcement agencies will also provide support for evacuation, traffic control, criminal investigations, crowd control, and access control to incident sites and/or governmental facilities including County and local Emergency Operations Centers (EOCs), security at community care/sheltering facilities and hospitals, jails, points of distribution (POD), Receipt Staging and Storage (RSS) and other critical care facilities involved in emergency response activities.

1.2 Relationship to Other ESF Annexes

ESF 16 often works closely with other County ESFs as a part of coordinated response and recovery activities. The following ESFs support law enforcement activities:

- **ESF 1 – Transportation.** Assists law enforcement in traffic control operations.

ESF 16. Law Enforcement

- **ESF 2 – Communications.** Ensures functional and interoperable emergency communications are available to support law enforcement efforts.
- **ESF 13 – Military Support.** Augment local law enforcement if resources are overwhelmed.
- **ESF 14 – Public Information.** Assists law enforcement in ensuring consistent and appropriate public messaging.

1.3 Policies and Agreements

The following policies and agreements are currently in place to guide and support law enforcement activities during an emergency:

- Memorandum of Agreement on the Receipt, Stage, Storage and Distribution of Emergency Supplies, dated 2012

2 Situation and Assumptions

2.1 Situation

The County is susceptible to a multitude of natural and human-caused disasters. Depending on their magnitude, these disasters have the ability to damage infrastructure, structures, and lifelines that may rapidly overwhelm the capacity of County agencies to assess the disaster and respond effectively to meet basic and emergency human needs.

During any type of disaster or large-scale emergency, law enforcement officers may be faced with tremendous challenges in meeting the increased needs for public assistance and aid. Emergency situations may lead to increased call volume, impaired roadways and other infrastructure, high numbers of citizens with injuries and needing rescue, large scale civil unrest, and looting and other violence. Such circumstances can cause fatigue and mental stress among officers and result in angry and upset victims who have high expectations of law enforcement's ability to manage and control the situation.

2.2 Assumptions

- General law enforcement activities are compounded by disaster-related community disruption, restriction of movement, impacted communications and facilities, and a shortage of law-enforcement resources.
- The capabilities of local law enforcement agencies may be quickly exceeded. Supplemental assistance should be requested through local and State emergency management and mutual aid agreements.

- The availability of resources will have a profound effect on agencies' abilities to perform tasked activities.

3 Roles and Responsibilities

The roles and responsibilities for each department in support of emergency services will vary depending on the type of resource, the length of the warning period, and the duration of the incident.

3.1 Primary Agency

The primary agency for each ESF is assigned based upon the agencies coordinating responsibilities, authorities, functional expertise, resources, and capabilities in managing incident activities. The primary agency may not be responsible for all elements of a function and will work with supporting agencies and Cooperating Agencies to ensure a coordinated response. The primary agency for ESF 16 is the Sheriff's Office.

3.1.1 Sheriff's Office

- Staff law enforcement positions in the EOC, representing law enforcement Countywide.
- Provide traffic and crowd control, security to critical facilities and supplies, and control access to hazardous or evacuated areas.
- Provide security for special populations affected by the emergency, such as juveniles in the assessment center or prisoners in the jail.
- Assist in dissemination of warning to the public.

3.2 Supporting Agencies

Supporting agencies for each ESF are those County entities that have substantial support roles during major incidents. Supporting agencies that support ESF 16 include:

3.2.1 Multnomah County Emergency Management

- Provides planning support.
- Oversees and activates the County Emergency Operations Center (EOC)
- Ensure 24 hour Duty Officer readiness to employ emergency alert systems and initiate notifications to critical partners.

ESF 16. Law Enforcement

3.2.2 Department of Community Justice

- Establish plans and procedures to ensure the safety of all clients in department custody.
- Coordinate security at the juvenile detention center.
- Support requests for additional public safety and security resources.

3.2.3 District Attorney

- Collaborate with courts and law enforcement agencies to determine emergency arrest or release policies.
- Coordinate with neighboring jurisdictions to transfer prisoners as needed.
- Assure legal requirements for due process are met.

3.2.4 County Roads

- Assist with crowd control barriers.
- Assist with road closure assignments.
- Assure prioritization in cooperation with law enforcement regarding road openings and closures.

3.2.5 Health Department

- Coordination and assistance in implementation of RSS protocol
- Information dissemination and recommendation to law enforcement in reference to protective measures associated with pandemic/epidemic/bio terrorism.

3.3 Cooperating Agencies

The County is supported by a variety of Cooperating Agencies that provide support through Operations of emergency functions within their own authority/jurisdiction, or are able to provide additional resources to support County response activities. Cooperating Agencies that support ESF 16 include:

3.3.1 City Police Departments

- Coordinate law enforcement activities within limits of jurisdictional authority.

ESF 16. Law Enforcement

- Support County law enforcement operations through mutual aid.

3.3.2 Oregon State Police

- Coordinate law enforcement activities within limits of jurisdictional authority.
- Support County law enforcement operations through mutual aid or via request through the State EOC.

3.3.3 Oregon State Sheriff's

- Support County law enforcement operations through mutual aid or via request through the State EOC.

3.3.5 Volunteer Fire Departments

- Participate in Unified Command with MCSO for unincorporated Multnomah County
- Provide resources in the form of apparatus, physical plant and communications in large scale and/or prolonged incidents.

3.3.6 City Fire Departments

- Participate in Unified Command with MCSO in incidents involving multidisciplinary response
- Gresham Fire and Rescue work directly with MCSO in area of HazMat response

3.3.7 AMR

- Support County Law Enforcement in mass casualty incidents and incidents with a criminal element.

3.3.8 ODOT

- Coordination and dissemination of information to law enforcement related to condition and status of major roadways and arterials.
- Work with law enforcement in prioritizing road repairs/openings.
- Provide for clear dispatch and communication process between ODOT and law enforcement.

3.3.9 TITAN Fusion Center

If a criminal or terrorist incident is suspected, the Sheriff's Office will notify the Oregon Terrorism Information Threat Assessment Network Fusion

ESF 16. Law Enforcement

Center. During a terrorist incident, the Fusion Center will support situational awareness and intelligence gathering functions.

4 Concept of Operations

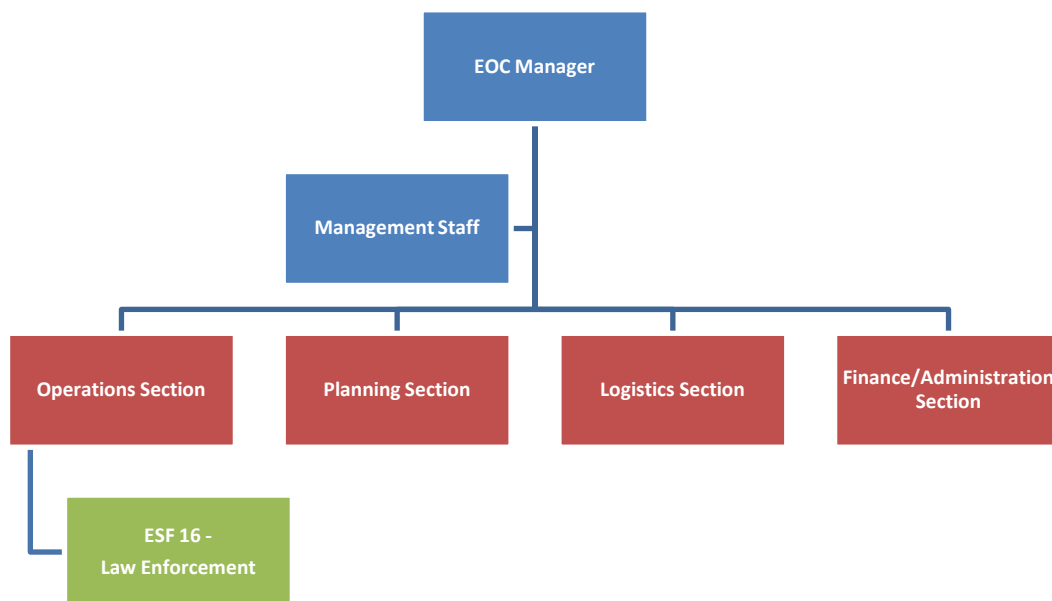
4.1 General

- In accordance with the Basic Plan and this ESF Annex, the Sheriff's Office is the primary agency responsible for coordinating law enforcement activities. Plans and procedures developed by the primary, support and cooperating agencies provide the framework for carrying out those activities.
- Requests for assistance with law enforcement resources will be generated one of two ways: they will be forwarded to the County EOC, or they will be issued in accordance with established mutual aid agreements.
- The County EOC Operations Section Chief, with input from identified primary, support and cooperating agencies, will provide guidance for the coordination of law enforcement resources.
- If the incident requires additional support for law enforcement operations, the Operations Section Chief may activate ESF 16.
- Law enforcement support requirements that cannot be met at the local level should be forwarded to the State for assistance. If needed, Federal assistance may be requested by the Governor.

4.2 Notifications

- The Duty Officer will notify the Sheriff's Office of EOC activations and request that representatives report to the EOC to coordinate law enforcement activities and staff ESF 16 if activated.
- As additional EOC staffing needs become apparent, other support and partnering agency personnel may be asked to report to the EOC to assist with law enforcement activities.

Table 1 Multnomah County ESF 16 Organization



4.3 Actions by Phase of Emergency Management

4.3.1 Preparedness

- Develop and maintain plans, procedures, and checklists to support emergency law enforcement operations.
- Ensure that emergency personnel call-up and resource lists are current and available to emergency management.
- Strive to ensure that all law enforcement personnel within the jurisdiction, including regulars and auxiliaries, are trained to the appropriate National Incident Management System (NIMS)/Incident Command System (ICS) level in traffic control and evacuation procedures and in search and rescue operations.
- Coordinate and maintain liaison with support agencies and State and Federal law enforcement agencies.
- Review plans and procedures and ensure that all law enforcement personnel are informed of existing or revised procedures.
- Ensure that mutual aid agreements with surrounding jurisdictions are current.

ESF 16. Law Enforcement

- Develop and maintain mutual aid agreements with local private-sector resources that could be used to augment local law enforcement capabilities.
- Ensure the availability of necessary equipment to support law enforcement activities.
- Participate in emergency management training and exercises.

4.3.2 Response

- Assist with the dissemination of warnings and notifications as time and resources allow.
- Establish communication between the EOC and Incident Management Team to determine the resources needed to support incident response and operations.
- Respond as required on a priority basis.
- Secure the prisoner population in County-owned correctional facilities during a disaster situation.
- Secure incident site(s).
- Activate mutual aid if needed.
- Support damage assessment activities.
- Coordinate activities with other responding agencies.
- Coordinate law enforcement agencies responding from outside the jurisdiction.
- Alert or activate off-duty and auxiliary personnel as required by the emergency.
- Conduct other specific response actions as dictated by the situation.
- Document expenditures for disaster/emergency-related activities and report to the EOC.

4.3.3 Recovery

- Continue to render support when and where required as long as emergency conditions exist.
- Demobilize resources.
- Return equipment and vehicles to response-ready condition.

ESF 16. Law Enforcement

- Document costs and provide copies to the EOC.
- Review plans and procedures with key personnel and make revisions and changes.
- Participate in after-action briefings and develop after-action reports.

4.3.4 Mitigation

- Participate in the hazard identification process and identify and correct vulnerabilities in the law enforcement function.
- Develop public safety programs that include disaster situations and present them to the public.

5 ESF Annex Development and Maintenance

The Sheriff's Office will be responsible for coordinating regular review and maintenance of this ESF Annex. Each primary, support and cooperating agency will be responsible for developing plans and procedures that address assigned tasks.

6 Supporting Documents

The following plans and procedures are currently in place:

- MCSO Emergency Response Plan
- Law Enforcement Standard Operating Procedures
- State of Oregon Emergency Operations Plan
 - ESF 16 – Law Enforcement
- National Response Framework
 - ESF 16– Public Safety and Security

7 Appendices

None at this time.

THIS PAGE LEFT BLANK INTENTIONALLY