

9

ESF 9 – Search and Rescue

THIS PAGE LEFT BLANK INTENTIONALLY

Table of Contents

1	Introduction	1
1.1	Purpose and Scope.....	1
1.2	Relationship to Other ESF Annexes.....	1
1.3	Policies and Agreements	2
2	Situation and Assumptions	2
2.1	Situation	2
2.2	Assumptions	3
3	Roles and Responsibilities	3
3.1	Primary Agency.....	4
3.1.1	Sheriff's Office	4
3.2	Supporting Agencies	4
3.2.1	Multnomah County Emergency Management.....	4
3.2.2	Multnomah County Fire Defense Board (County Fire Agencies) .	4
3.2.3	EMS – Medical Transport Air and Ground	4
3.3	Cooperating Agencies.....	4
3.3.1	State Search and Rescue (SAR) Coordinator	5
3.3.2	City Fire and Rescue agencies, Rural Volunteer Fire Districts and Special District Fire agencies.....	5
3.3.3	Local Police agencies.....	5
3.3.4	Oregon National Guard	5
3.3.5	Civil Air Patrol	5
3.3.6	Federal Bureau of Investigations.....	5
3.3.7	United States Coast Guard.....	5
3.3.8	Air Force Rescue Coordination Center.....	5
4	Concept of Operations	5
4.1	General	5
4.2	Notifications	6
4.3	Actions by Phase of Emergency Management	7
4.3.1	Preparedness	7
4.3.2	Response	7
4.3.3	Recovery	8
4.3.4	Mitigation	8
5	ESF Annex Development and Maintenance.....	8

ESF 9. Search and Rescue

6 Supporting Plans and Procedures8

7 Appendices9

THIS PAGE LEFT BLANK INTENTIONALLY

ESF 9 Tasked Agencies	
Primary Agencies	Sheriff's Office
Supporting Agencies	Multnomah County Emergency Management Multnomah County Fire Defense Board EMS – Medical Transport Air and Ground
Cooperating Agencies	State SAR Coordinator City Fire and Rescue agencies, Rural Volunteer Fire Districts and Special District Fire agencies <ul style="list-style-type: none"> • Portland Fire Bureau • Gresham Fire • Sauvie Island Fire • Lake Oswego Fire • Cascade Locks Fire • Corbett Fire • Port of Portland Fire • Tualatin Valley Fire and Rescue Local Police agencies <ul style="list-style-type: none"> • Portland Police Bureau • Gresham Police • Lake Oswego Police • TriMet Police • Port of Portland Police Oregon National Guard Civil Air Patrol Federal Bureau of Investigations United States Coast Guard Air Force Rescue Coordination Center

1 Introduction

1.1 Purpose and Scope

The purpose of Emergency Support Function (ESF) 9 is to coordinate search and rescue operations and resources in support of water, urban and wilderness search and rescue during actual or potential emergencies. The scope of this function includes search and rescue challenges generated as the result of: an earthquake or building collapse, persons lost in wilderness or other recreational or natural environments, persons in need of rescue or are missing during a water-related activity, the search for escaped prisoners and detainees, the search for downed aircraft, and/or the extrication of accident victims.

1.2 Relationship to Other ESF Annexes

ESF 9 often works closely with other County ESFs as a part of coordinated response and recovery activities. The following ESFs support search and rescue activities:

ESF 9. Search and Rescue

- **ESF 2 – Communications.** Provides support and specialized teams and equipment to varying locations to enhance communications.
- **ESF 4 – Firefighting.** Provides support and specialized teams for Urban Search and Rescue operations.
- **ESF 5 – Information and Planning.** Provides situation updates on the status of operations.
- **ESF 8 – Health and Medical.** Provides basic medical care, triage, and treatment to persons extricated and/or evacuated.
- **ESF 14 – Public Information.** Assists law enforcement in ensuring consistent and appropriate public messaging.
- **ESF 16 – Law Enforcement.** Provides support and specialized teams, including K-9 units, for search and rescue operations.

1.3 Policies and Agreements

The following policies and agreements are currently in place to guide and support search and rescue activities during an emergency:

- Oregon Revised Statutes 404.110 – Sheriff to provide SAR within the County
- Oregon State SAR Plan
- Multnomah County Sheriff’s Office (MCSO) SAR Plan
- MCSO Policy 6.11 - SAR Operations

2 Situation and Assumptions**2.1 Situation**

All volunteers and MCSO SAR Coordinators are trained in their specialties, are familiar with Incident Command System (ICS)/National Incident Management System (NIMS) organization, and have completed ICS/NIMS basic training.

Plans and procedures are developed for each type of mission performance that may require field operations. These procedures fall under the authority and responsibility of the Search and Rescue Coordinator.

The following circumstances may initiate a search and rescue mission requiring field operations:

ESF 9. Search and Rescue

- Person(s) participating in recreational activity become victims of an accident, suffer a health problem, or become disoriented regarding direction.
- Person(s) have wandered from a facility or a group organization activity designed to house, feed, care, and provide guidance for them.
- Passenger(s) in a moving vehicle become submerged in water.
- Person(s) fall victim to drowning.
- Person(s) trapped by debris from a structural collapse due to mechanical failure or natural causes.
- Transitory persons are involved in a transportation-related accident.
- An aircraft has crashed or landed in an obscure region not normally or officially provided for landings.

2.2 Assumptions

- Search and rescue operations will continue to increase as population and recreational opportunities continue to grow.
- Operations may be overwhelmed during emergencies and disasters. Local search and rescue efforts may require technical assistance from other agencies, counties, and the State.
- Access to impacted locations may be limited due to steep or rocky terrain, water, or structural barriers. Some areas may only be accessible by aircraft or boat.
- Rapid assessment of impacted areas and lost individuals will assist in the determination of response priorities.
- Local residents and unaffiliated volunteers may initiate activities to assist in search and rescue operations and will require coordination and direction.

3 Roles and Responsibilities

The roles and responsibilities for each agency in support of emergency services will vary depending on the type of resource, the length of the warning period, and the duration of the incident.

ESF 9. Search and Rescue

3.1 Primary Agency

The primary agency for each ESF is assigned based upon the agencies coordinating responsibilities, authorities, functional expertise, resources, and capabilities in managing incident activities. The primary agency may not be responsible for all elements of a function and will work with supporting agencies and cooperating agencies to ensure a coordinated response. The primary agency for ESF 9 is the Sheriff's Office.

3.1.1 Sheriff's Office

- Coordinate search and rescue activities in Multnomah County.

3.2 Supporting Agencies

Supporting agencies for each ESF are those County entities that have substantial support roles during major incidents. Supporting agencies that support ESF 9 include:

3.2.1 Multnomah County Emergency Management

- Provides planning support.
- Oversees and activates the County Emergency Operations Center (EOC)
- Ensure 24 hour Duty Officer readiness to employ emergency alert systems and initiate notifications to critical partners.

3.2.2 Multnomah County Fire Defense Board (County Fire Agencies)

- Conduct urban search and rescue activities.

3.2.3 EMS – Medical Transport Air and Ground

- Ground Team(s) respond in the field to assist with direct medical care, extraction and transport to a higher trained medical professional.
- Air Team(s) respond in the field to assist by inserting via air and provide direct medical care, and/or air transportation to a higher trained medical professional.

3.3 Cooperating Agencies

The County is supported by a variety of cooperating agencies that provide support through coordination of emergency functions within their own authority/jurisdiction, or are able to provide additional resources to support County response activities. Cooperating agencies that support ESF 9 include:

ESF 9. Search and Rescue

3.3.1 State Search and Rescue (SAR) Coordinator

- The State SAR Coordinator will assist in locating an available National Guard asset (Air or Ground).

3.3.2 City Fire and Rescue agencies, Rural Volunteer Fire Districts and Special District Fire agencies

- Conduct urban and confined space search and rescue activities.

3.3.3 Local Police agencies

- Conduct investigative steps to determine the nature of the missing or lost person.
- Secure perimeter and control access area.

3.3.4 Oregon National Guard

- Conduct ground SAR operations or logistical support and with specialty teams where technical skills may be required; i.e. air insertion, high angle, etc.
- Conduct air SAR operations or air medical support.

3.3.5 Civil Air Patrol

- Civil Air Patrol to conduct SAR operations with photography, view enhancing, and/or communications relay

3.3.6 Federal Bureau of Investigations

- Federal Bureau of Investigations to conduct investigative ground search operations.

3.3.7 United States Coast Guard

- United States Coast Guard to conduct air SAR operations and medical support.

3.3.8 Air Force Rescue Coordination Center

- Air Force Resource Coordination Center's Cellular Forensics Group to produce mapping with search area with high probabilities of success accounting for cellular phone and tower data, search conditions, lost person behavior and terrain.

4 Concept of Operations

4.1 General

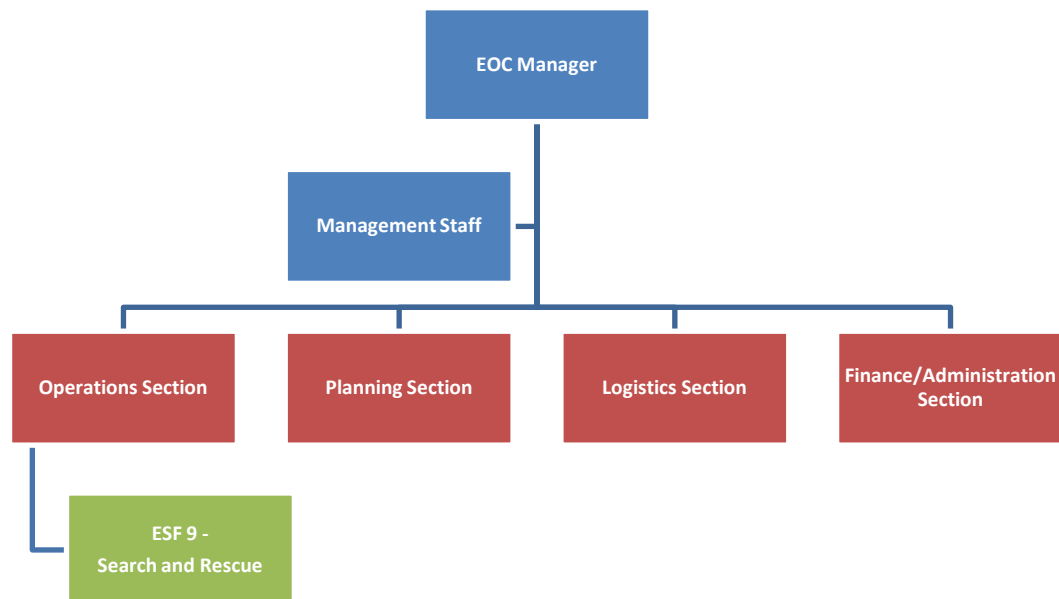
- In accordance with the Basic Plan and this ESF Annex, the Sheriff's Office is the primary agency responsible for

ESF 9. Search and Rescue

coordinating search and rescue activities. Plans and procedures developed by the primary, support and cooperating agencies provide the framework for carrying out those activities.

- Requests for assistance with search and rescue resources will be generated one of two ways: they will be forwarded to the County EOC, or they will be issued in accordance with established mutual aid agreements.
- The County EOC Operations Section Chief, with input from identified primary, support and cooperating agencies, will provide guidance for the coordination of search and rescue resources.
- If the incident requires additional support for search and rescue operations, the Operations Section Chief may activate ESF 9.
- Search and rescue support requirements that cannot be met at the local level should be forwarded to the State for assistance. If needed, Federal assistance may be requested by the Governor.

Table 1 Multnomah County ESF 9 Organization



4.2 Notifications

- The Duty Officer will notify the Sheriff's Office of EOC activations and request that representatives report to the EOC to coordinate search and rescue activities and staff ESF 9 if activated.

ESF 9. Search and Rescue

- As additional EOC staffing needs become apparent, other support and partnering agency personnel may be asked to report to the EOC to assist with search and rescue activities.

4.3 Actions by Phase of Emergency Management**4.3.1 Preparedness**

- Encourage active participation of inter-agency preparedness organizations, which collaborate in search and rescue activities on a regular basis.
- Identify response zones, potential staging areas, and potential medical facilities with local and regional search and rescue teams and establish specialized teams.
- Prepare and maintain plans and procedures, resource inventories, personnel rosters, and resource mobilization information necessary to implement search and rescue operations.
- Ensure that mutual aid agreements are in place with surrounding jurisdictions.
- Coordinate and participate in the development and presentation of training courses and exercises for search and rescue personnel.
- Maintain liaison with support agencies.
- Pre-identify typed search and rescue resources and identify resources from other agencies or capabilities that may assist with search and rescue, and plan to integrate such additional resources as necessary.
- Develop a management plan to manage uncertified volunteers.

4.3.2 Response

- Initiate mobilization procedures.
- Assemble personnel and equipment at a designated location.
- Transport the team, including personnel and equipment, to the incident scene.
- Collect and analyze incident information to help determine the need to deploy search and rescue operations.

ESF 9. Search and Rescue

- Plan and coordinate search and rescue operations at the incident site.
- Direct search and rescue resources according to NIMS, ICS, and team policies and procedures/guidelines.
- Deploy search and rescue representatives to the Emergency Operations Center (EOC).
- Establish communication between the EOC and Incident Management Team to determine the resources needed to support incident response and operations.

4.3.3 Recovery

- Continue to render support when and where required as long as emergency conditions exist.
- Participate in after-action briefings and develop after-action reports.
- Make necessary changes to this ESF Annex and supporting plans and procedures.
- Initiate a financial reimbursement process for these activities when such support is available.

4.3.4 Mitigation

- Review the hazards most likely to affect the County and identify potential vulnerabilities in the search and rescue function.
- Develop plans to overcome identified vulnerabilities (e.g., new equipment, training, and mutual aid procedures).
- Ensure that all equipment is regularly checked and maintained for instant deployment.

5 ESF Annex Development and Maintenance

The Sheriff's Office will be responsible for coordinating regular review and maintenance of this ESF Annex. Each primary, support and cooperating agency will be responsible for developing plans and procedures that address assigned tasks.

6 Supporting Plans and Procedures

The following plans and procedures are currently in place:

Multnomah County

ESF 9. Search and Rescue

- MCSO Emergency Response Plan
- Multnomah County Search and Rescue Plan

State of Oregon

- State of Oregon Emergency Operations Plan
 - ESF 9 – Search and Rescue

Federal

- National Response Framework
 - ESF 9 – Search and Rescue

7 Appendices

None at this time.