

1998 SEC Development	Area (Square Feet)	Depth (Inches)	Volume (Cubic Feet)	Volume (Cubic Yards)
Driveway A	7,760	1	647	24
Driveway B	28,932	1	2,411	89
Driveway D	0	0	0	0
Driveway E	0	0	0	0
Driveway F	0	0	0	0
Loading Area G	0	0	0	0
Fill Area H	0	0	0	0

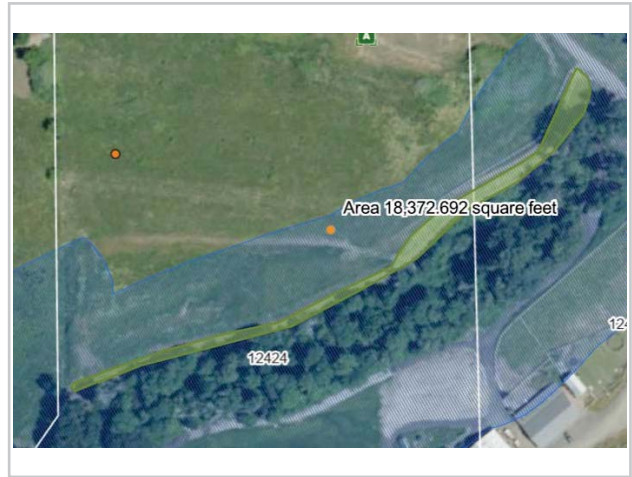
2025 SEC Development	Area (Square Feet)	Depth (Inches)	Volume (Cubic Feet)	Volume (Cubic Yards)
Driveway A	18,373	1	1,531	57
Driveway B	36,346	1	3,029	112
Driveway D	12,319	1	1,027	38
Driveway E	9,655	1	805	30
Driveway F	17,953	1	1,496	55
Loading Area G	26,430	1	2,203	82
Fill Area H	13,183	1	1,099	41

Cumulative SEC Development	Area (Square Feet)		Volume (Cubic Feet)	Volume (Cubic Yards)
Driveway A	10,613		884	33
Driveway B	7,414		618	23
Driveway D	12,319		1,027	38
Driveway E	9,655		805	30
Driveway F	17,953		1,496	55
Loading Area G	26,430		2,203	82
Fill Area H	13,183		1,099	41

1998 Measurement - Driveway A (7,760 square feet)



2025 Measurement - Driveway A (18,373 square feet) **Ex. B.25, Pg. 2**



1998 Measurement - Driveway B (28,932 square feet)



2025 Measurement - Driveway B (36,346 square feet)



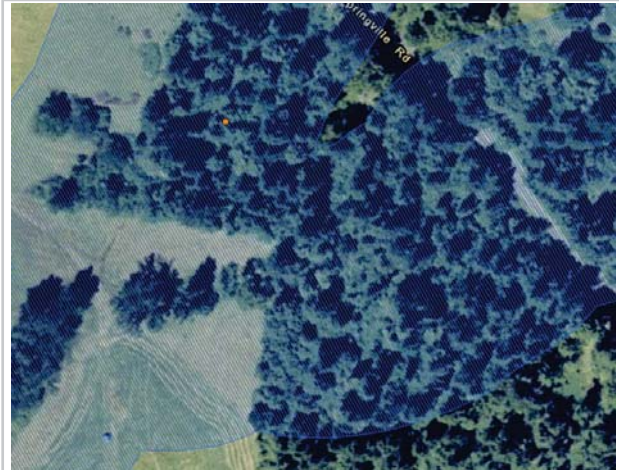
1998 - Driveway D (Not Apparent)



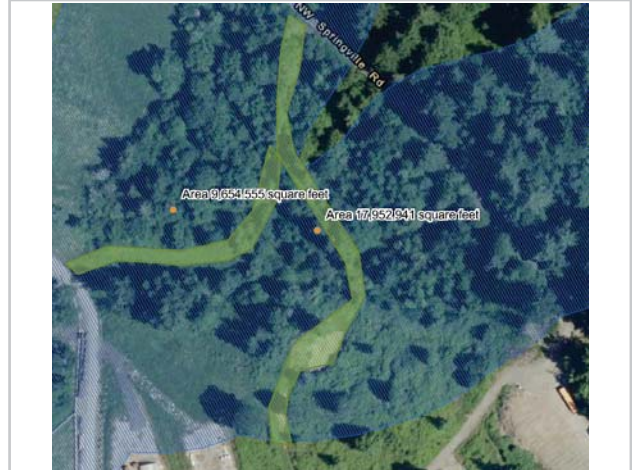
2025 Measurement - Driveway D (12,319 square feet)



1998 - Driveways E and F (Not Apparent)



2025 - Driveways E (9,655) and F (17,953 square feet)



1998 - Loading Area G (Not Apparent)



2025 Measurement - Loading Area G (26,430 square feet) Ex. B.25, Pg. 3



1998 - Fill Area H (Not Apparent)



2025 Measurement - Fill Area H (13,183 Square Feet)

