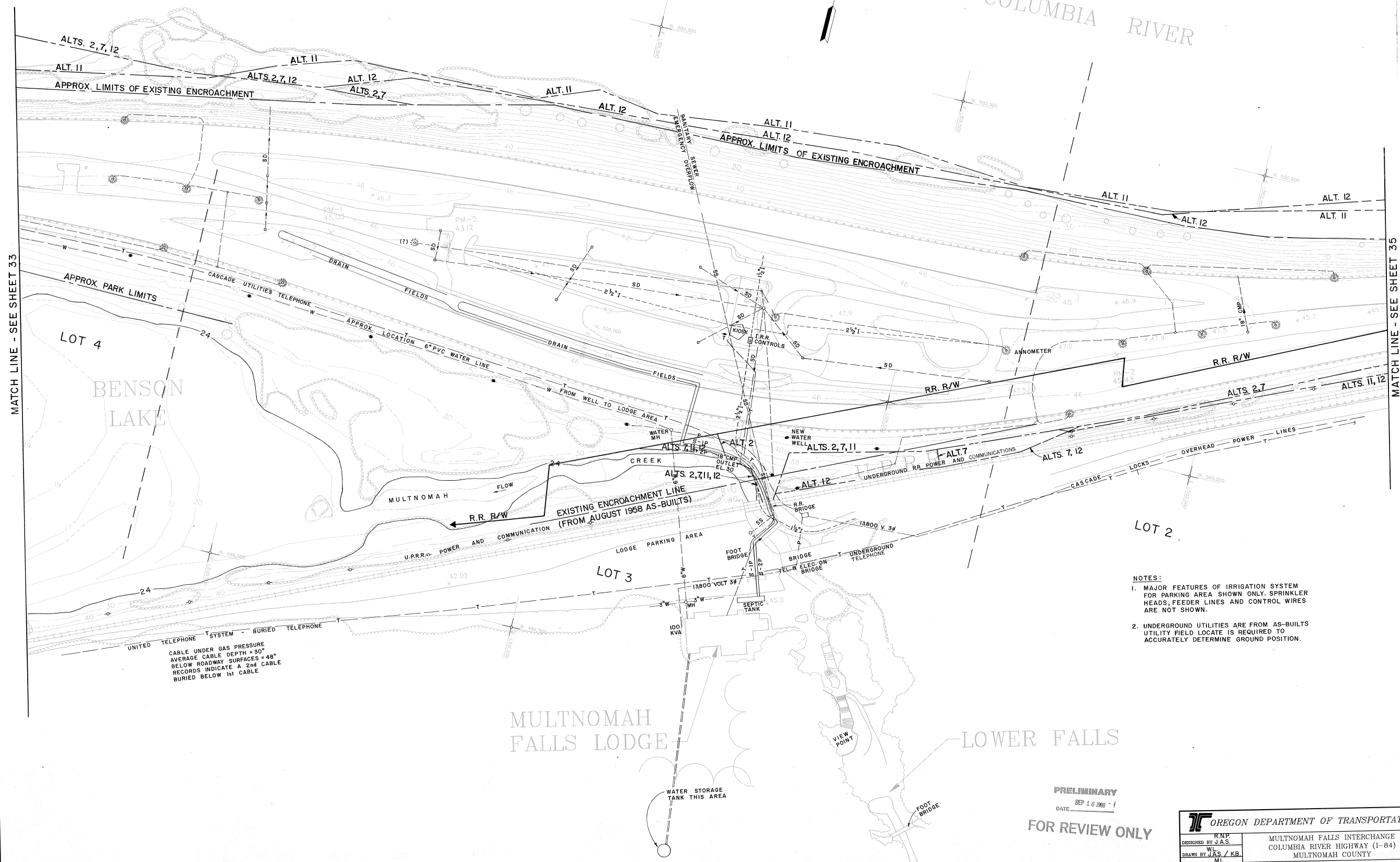




COLUMBIA RIVER



MATCH LINE - SEE SHEET 33

MATCH LINE - SEE SHEET 35

- NOTES:
1. MAJOR FEATURES OF IRRIGATION SYSTEM FOR PARKING AREA SHOWN ONLY. SPRINKLER HEADS, FEEDER LINES AND CONTROL WIRES ARE NOT SHOWN.
 2. UNDERGROUND UTILITIES ARE FROM AS-BUILTS. UTILITY FIELD LOCATE IS REQUIRED TO ACCURATELY DETERMINE GROUND POSITION.

CABLE UNDER GAS PRESSURE
AVERAGE CABLE DEPTH = 30"
BELOW ROADWAY SURFACES = 48"
RECORDS INDICATE A 2nd CABLE
BURIED BELOW 1st CABLE

MULTNOMAH FALLS LODGE

LOWER FALLS

PRELIMINARY
DATE SEP 16 1988 '1
FOR REVIEW ONLY

L & A LIN & ASSOCIATES
CONSULTING ENGINEERS

NO.	DATE	REVISION	APPROVAL

<p>OREGON DEPARTMENT OF TRANSPORTATION</p>	
R.N.P. DESIGNED BY J.A.S. W.L. DRAWN BY J.A.S. / K.B. M.S.K. CHECKED BY B.S.K. SCALE 1"=50' DATE 9/16/88	MULTNOMAH FALLS INTERCHANGE COLUMBIA RIVER HIGHWAY (I-84) MULTNOMAH COUNTY RIGHT OF WAY, EXISTING UTILITIES & DRAINAGE STA. 161+00 TO 183+00
SHEET NUMBER 34 OF 35	TAMS CONSULTANTS, INC. ENGINEERS AND PLANNERS 1220 S.W. MORRISON STREET SUITE 435 PORTLAND, OREGON 97205 (503) 221-0735