



DRAWING INDEX

PRESENTATION

000	COVER
001	SITE PLAN
001	SITE PLAN
002	FLOOR PLANS
003	ROOF PLANS
004	EXTERIOR ELEVATIONS
005	EXTERIOR ELEVATIONS
006	EXTERIOR ELEVATIONS
007	BUILDING SECTIONS
008	COLORS AND MATERIALS
009	IMPERVIOUS AREAS



architecture and planning
1001 se sandy blvd, portland or 97214
503.544.7210 emk@emarchitecture.net
(c) 2025 em architecture llc
MAIN FIRE STATION
36930 EAST HISTORIC
COLUMBIA RIVER HWY
CONCEPT DOCUMENTS
01.15.2025
COVER

000



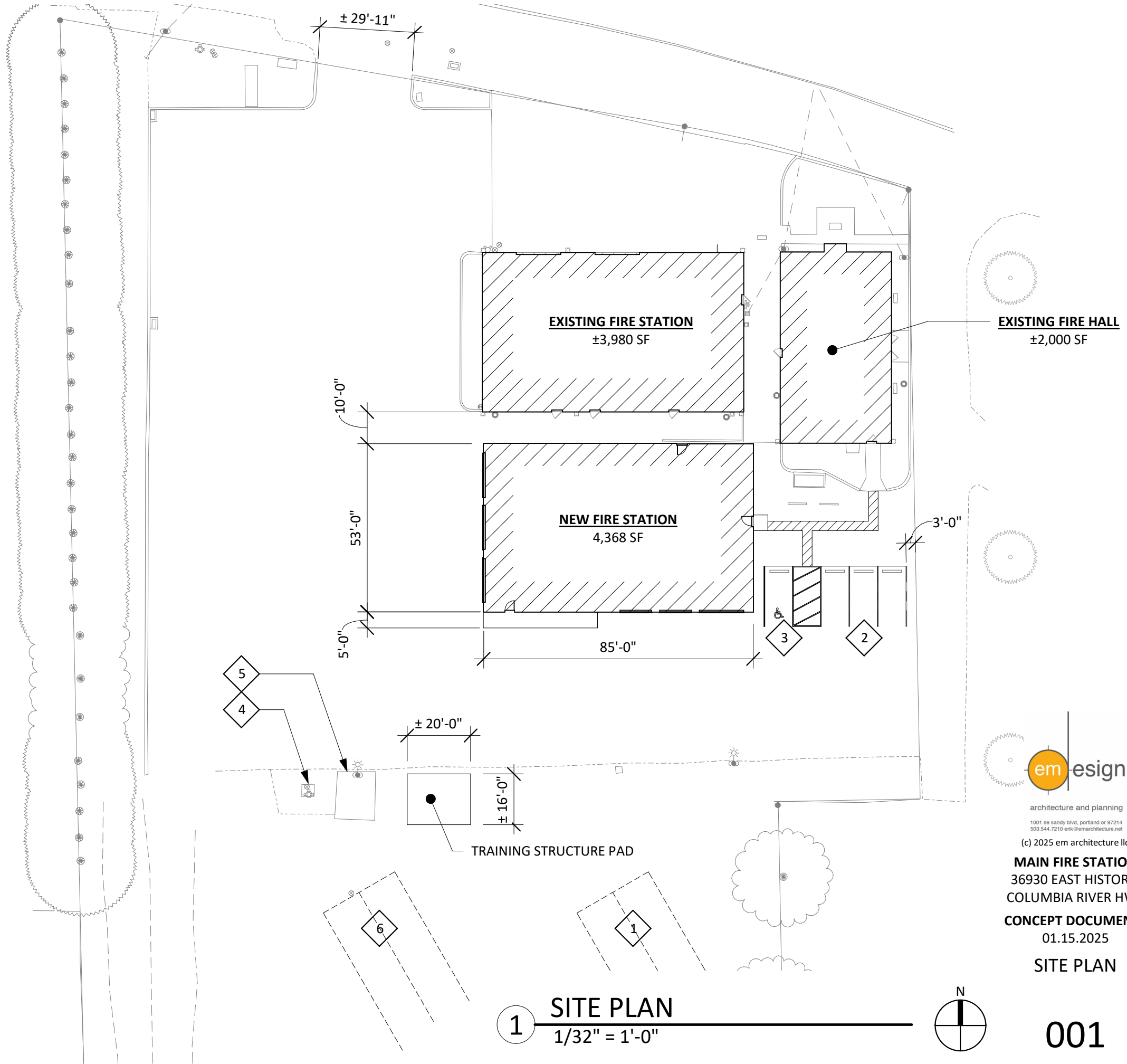
EXISTING CONDITIONS

N.T.S.

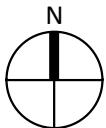
KEYNOTES



- 1 (E) SEPTIC FIELD
- 2 PARKING - 9' X 19' STALLS, TYP.
- 3 ADA PARKING WITH ACCESS AISLE
- 4 (E) WATER
- 5 (E) FUELING
- 6 FUTURE REPLACEMENT FIELD



1 SITE PLAN
1/32" = 1'-0"



architecture and planning
1001 se sandy blvd, portland or 97214
503.544.7210 emk@emarchitecture.net

(c) 2025 em architecture llc

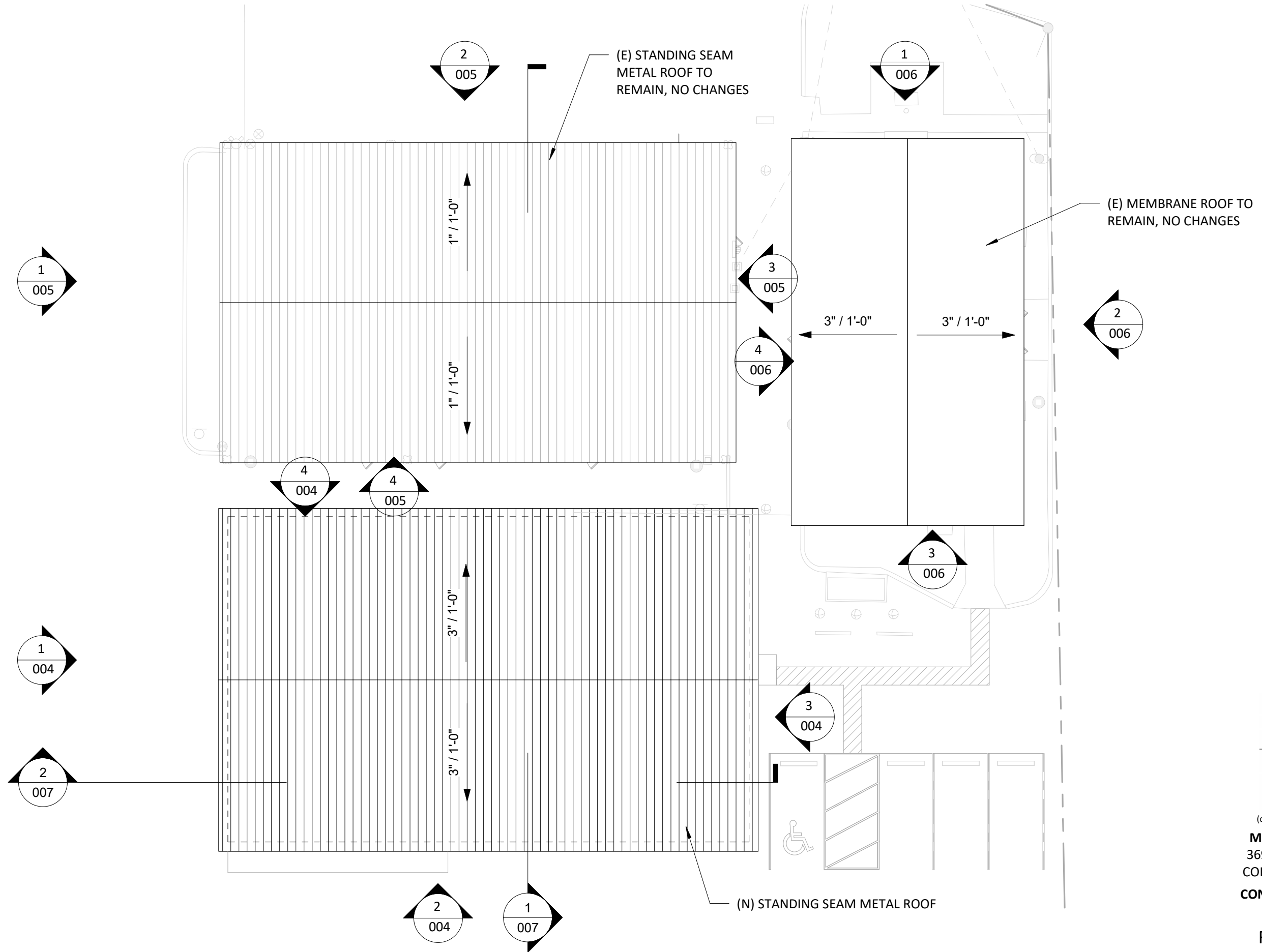
MAIN FIRE STATION
36930 EAST HISTORIC
COLUMBIA RIVER HWY
CONCEPT DOCUMENTS
01.15.2025
SITE PLAN

Legend for architectural symbols:

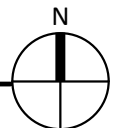
- TYP NEW WALL:** Represented by a thick solid black line.
- TYP EXIST. WALL:** Represented by a thin solid black line.
- TYP PARTIAL WALL:** Represented by two parallel thin solid black lines.
- DEMOLISHED WALL OR OTHER BUILDING OR SITE ELEMENT:** Represented by a dashed black line.
- PROPERTY LINE:** Represented by a long dashed black line.
- TYP NEW DOOR:** Represented by a symbol showing a door frame and a swing arc, with a note "4" UNO" indicating a 4-inch opening.
- TYP EXIST. DOOR:** Represented by a symbol showing a door frame and a swing arc, indicating an existing door.



002



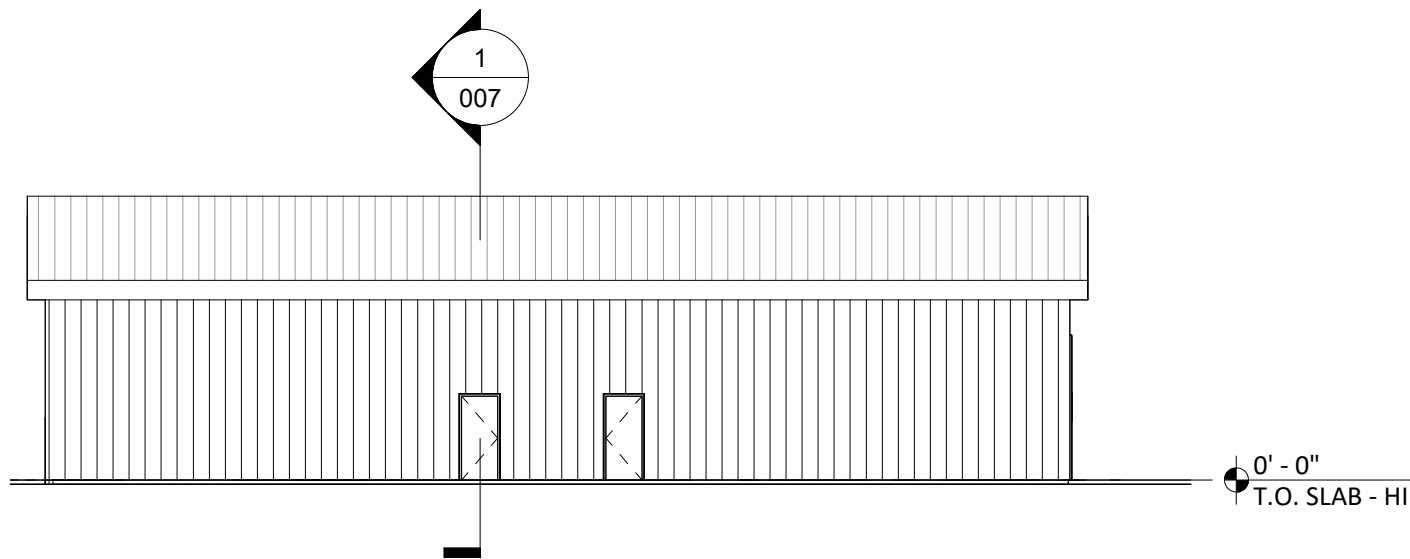
1 ROOF PLAN
1/16" = 1'-0"



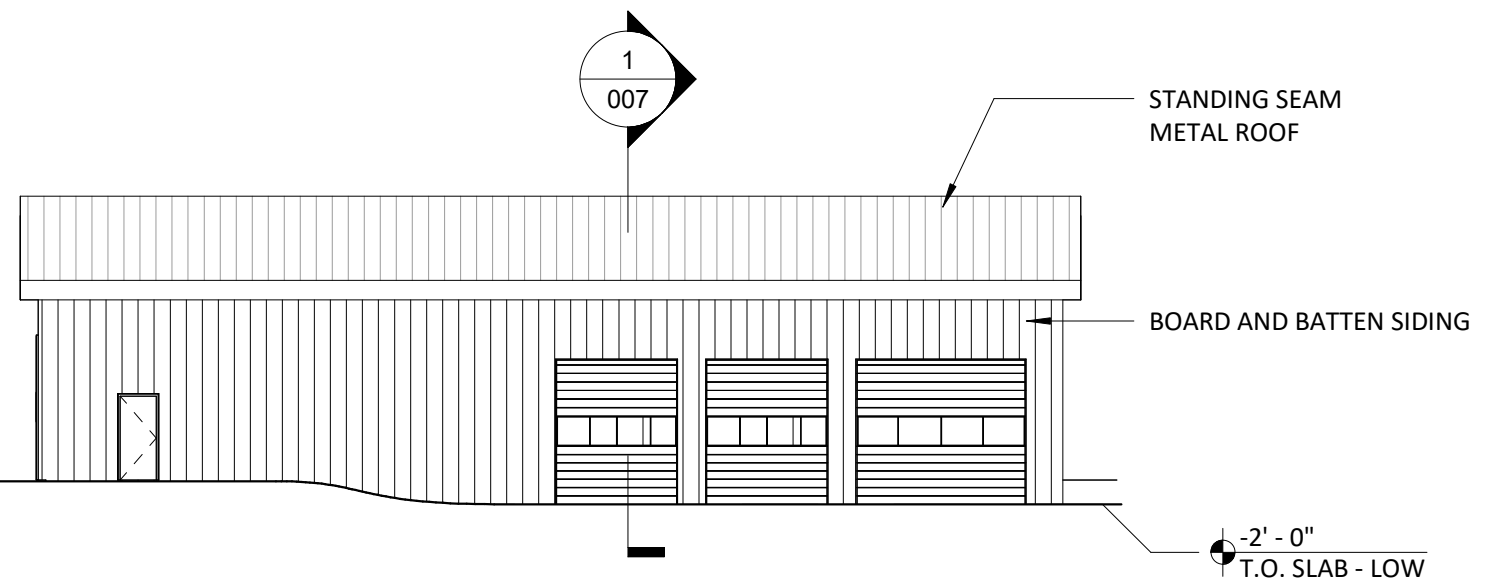
architecture and planning
1001 se sandy blvd, portland or 97214
503.544.7210 enr@emarchitecture.net

(c) 2025 em architecture llc

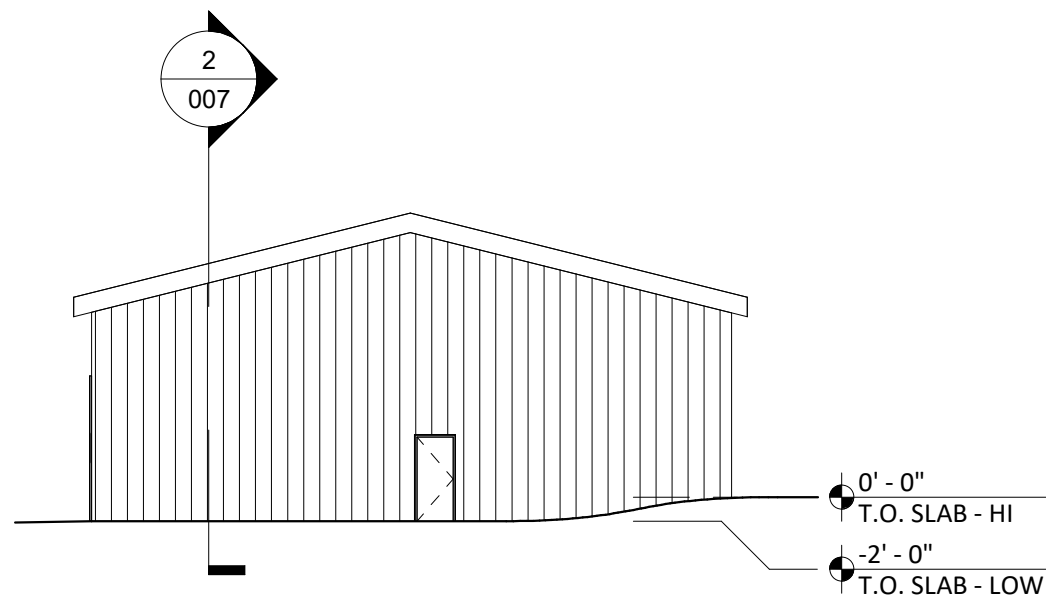
MAIN FIRE STATION
36930 EAST HISTORIC
COLUMBIA RIVER HWY
CONCEPT DOCUMENTS
01.15.2025
ROOF PLANS



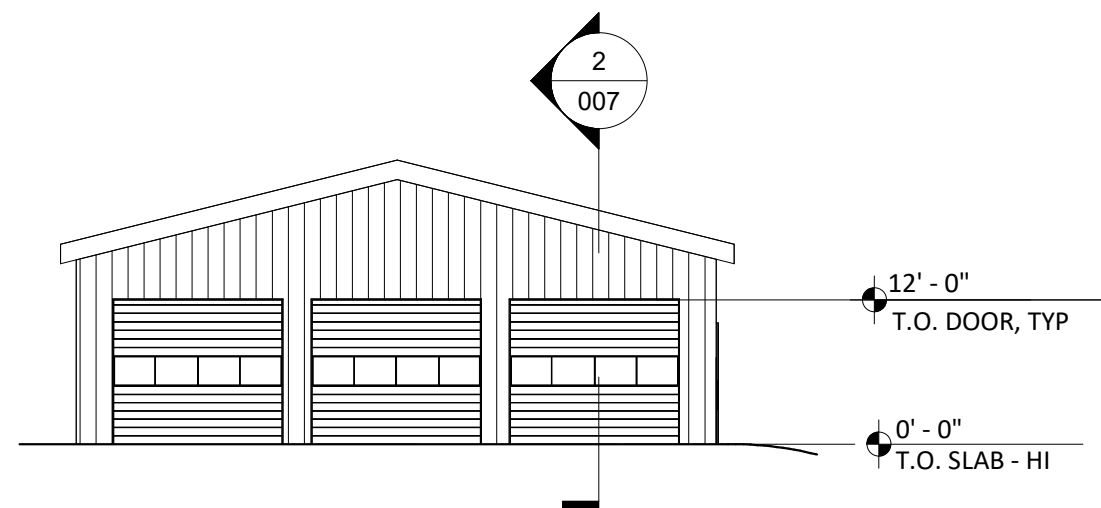
4 (N) STATION - NORTH ELEVATION
1/16" = 1'-0"



2 (N) STATION - SOUTH ELEVATION
1/16" = 1'-0"



3 (N) STATION - EAST ELEVATION
1/16" = 1'-0"



1 (N) STATION - WEST ELEVATION
1/16" = 1'-0"



architecture and planning
1001 se sandy blvd, portland or 97214
503.544.7210 emk@emarchitecture.net

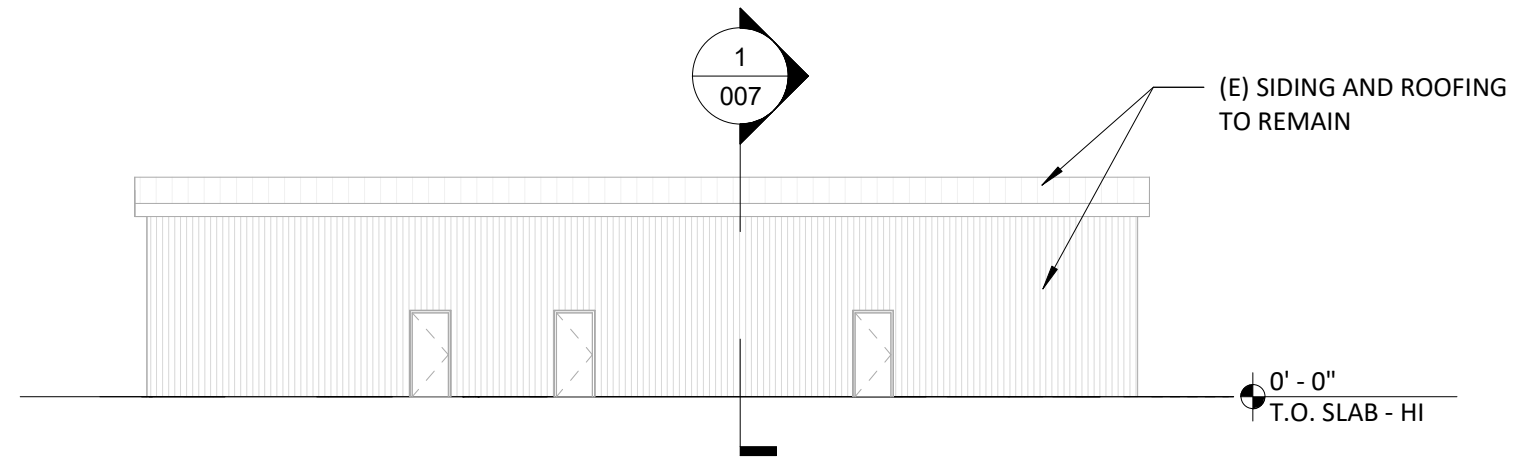
(c) 2025 em architecture llc

MAIN FIRE STATION
36930 EAST HISTORIC
COLUMBIA RIVER HWY
CONCEPT DOCUMENTS

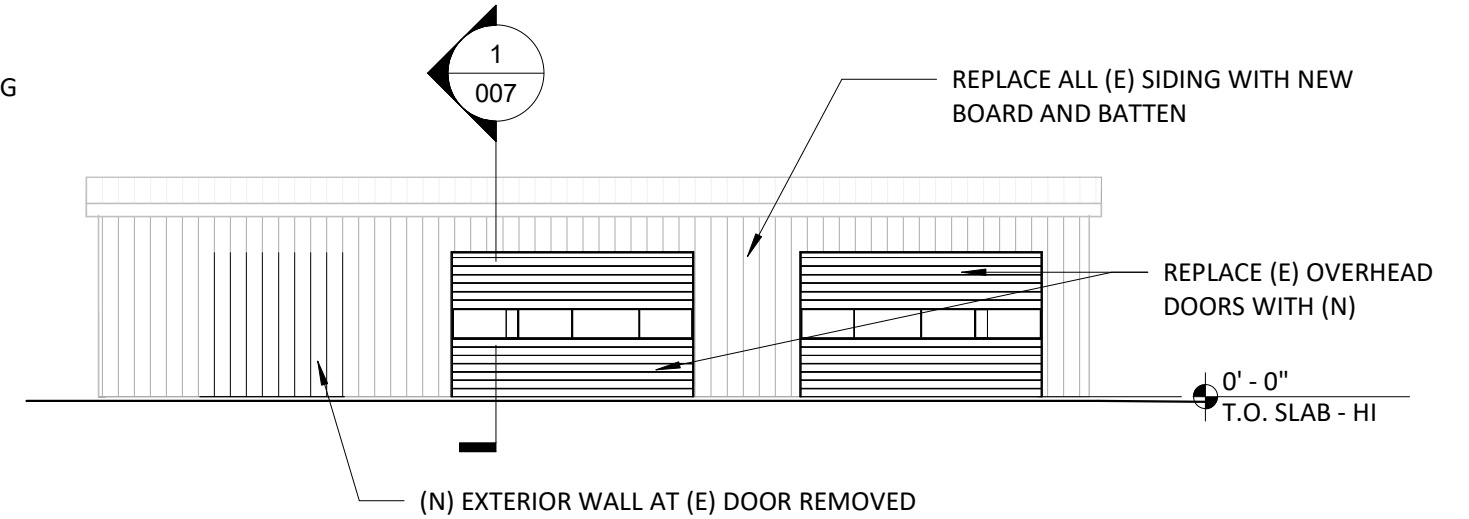
01.15.2025

EXTERIOR
ELEVATIONS

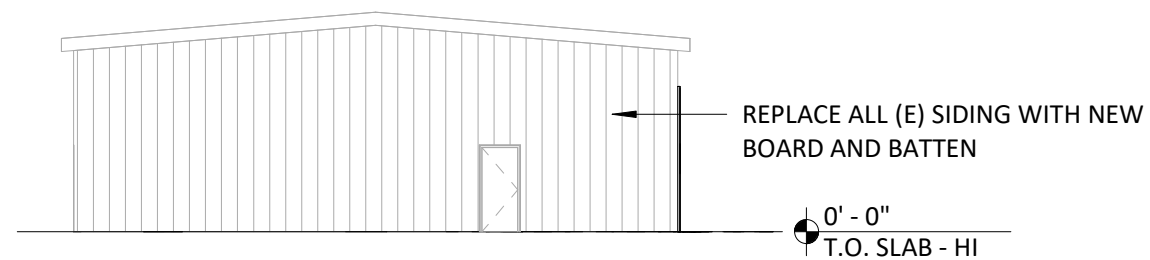
004



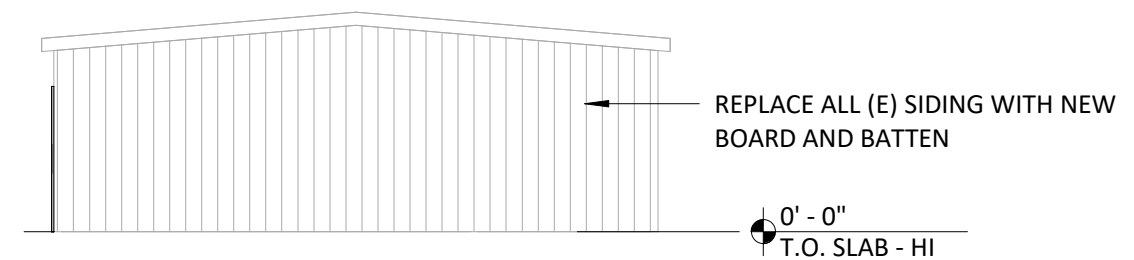
4 (E) STATION - SOUTH ELEVATION
1/16" = 1'-0"



2 (E) STATION - NORTH ELEVATION
1/16" = 1'-0"



3 (E) STATION - EAST ELEVATION
1/16" = 1'-0"



1 (E) STATION - WEST ELEVATION
1/16" = 1'-0"



architecture and planning

1001 se sandy blvd, portland or 97214

503.544.7210 emk@emarchitecture.net

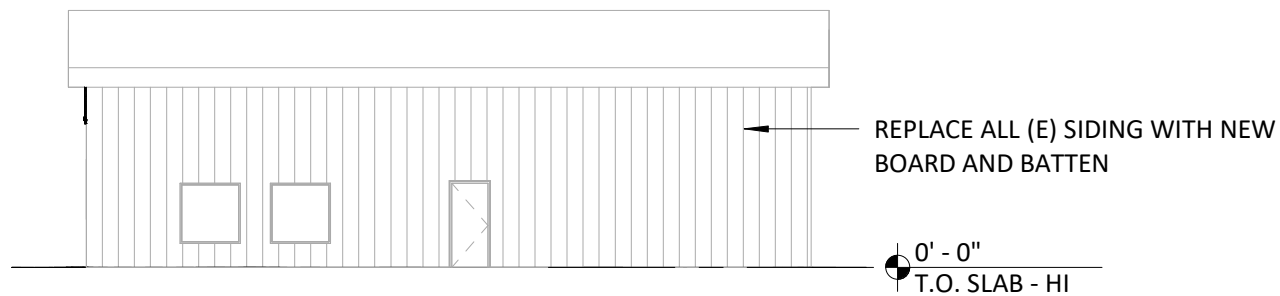
(c) 2025 em architecture llc

MAIN FIRE STATION
36930 EAST HISTORIC
COLUMBIA RIVER HWY
CONCEPT DOCUMENTS

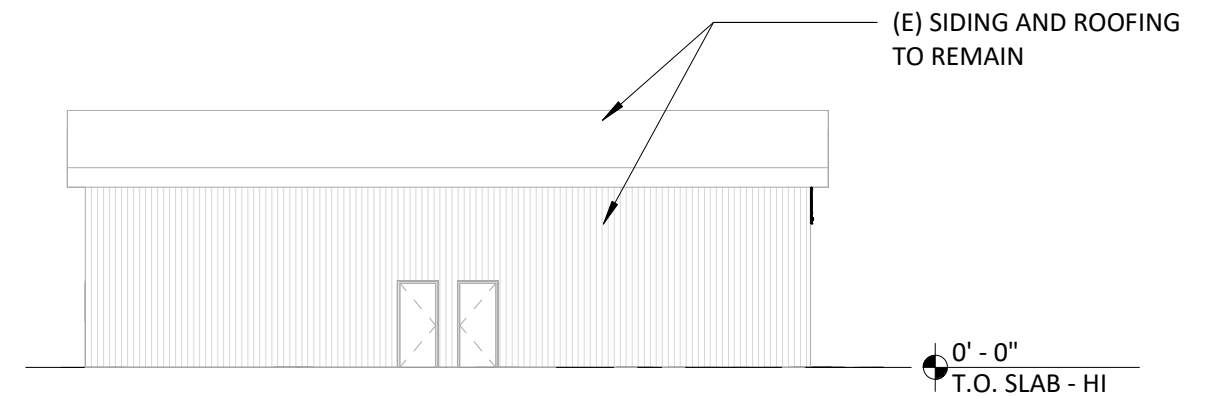
01.15.2025

**EXTERIOR
ELEVATIONS**

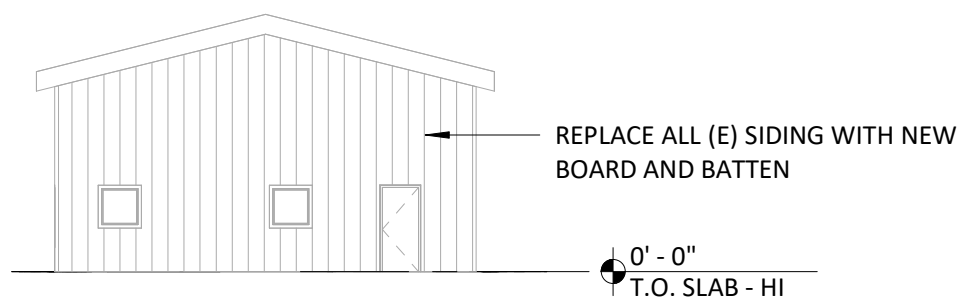
005



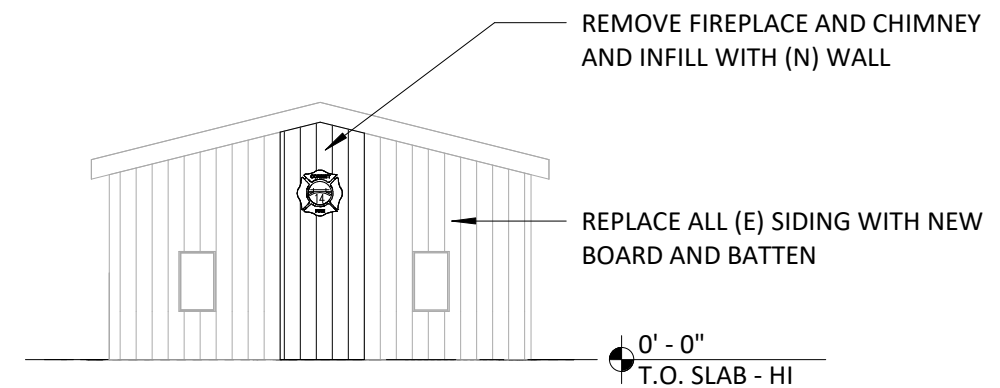
4 (E) FIRE HALL - WEST ELEVATION
1/16" = 1'-0"



2 (E) FIRE HALL - EAST ELEVATION
1/16" = 1'-0"



3 (E) FIRE HALL - SOUTH ELEVATION
1/16" = 1'-0"



1 (E) FIRE HALL - NORTH ELEVATION
1/16" = 1'-0"



architecture and planning

1001 se sandy blvd, portland or 97214

503.544.7210 emk@emarchitecture.net

(c) 2025 em architecture llc

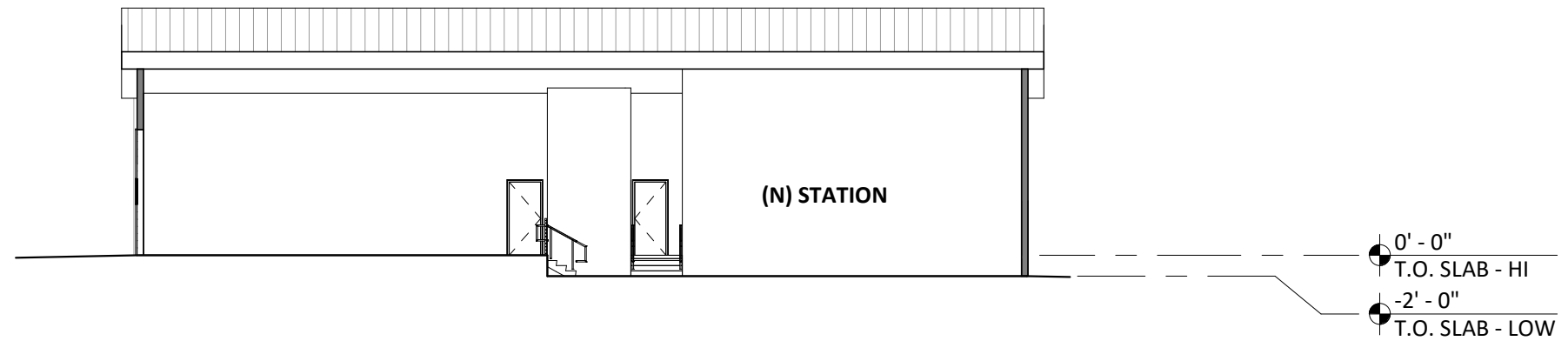
MAIN FIRE STATION
36930 EAST HISTORIC
COLUMBIA RIVER HWY

CONCEPT DOCUMENTS

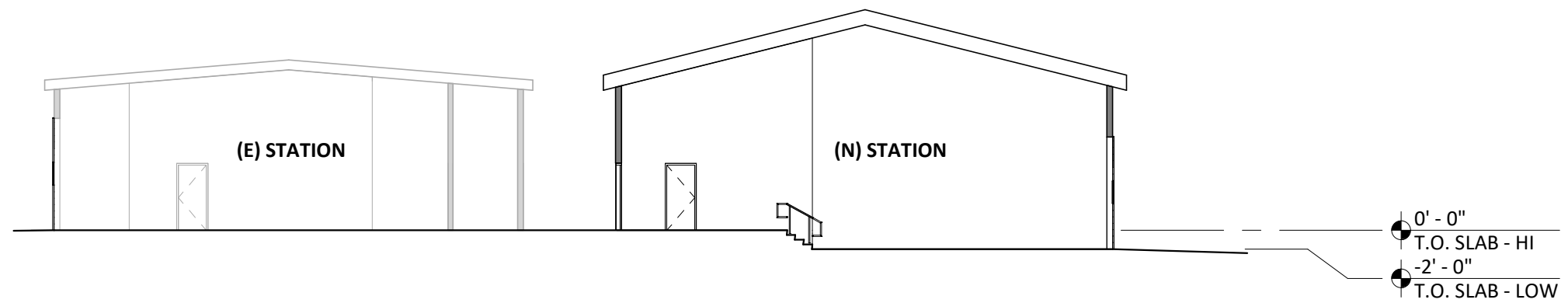
01.15.2025

EXTERIOR
ELEVATIONS

006



2 EAST-WEST BUILDING SECTION
 1/16" = 1'-0" LOOKING NORTH



1 NORTH-SOUTH BUILDING SECTION
 1/16" = 1'-0" LOOKING EAST



architecture and planning
 1001 se sandy blvd, portland or 97214
 503.544.7210 emk@emarchitecture.net

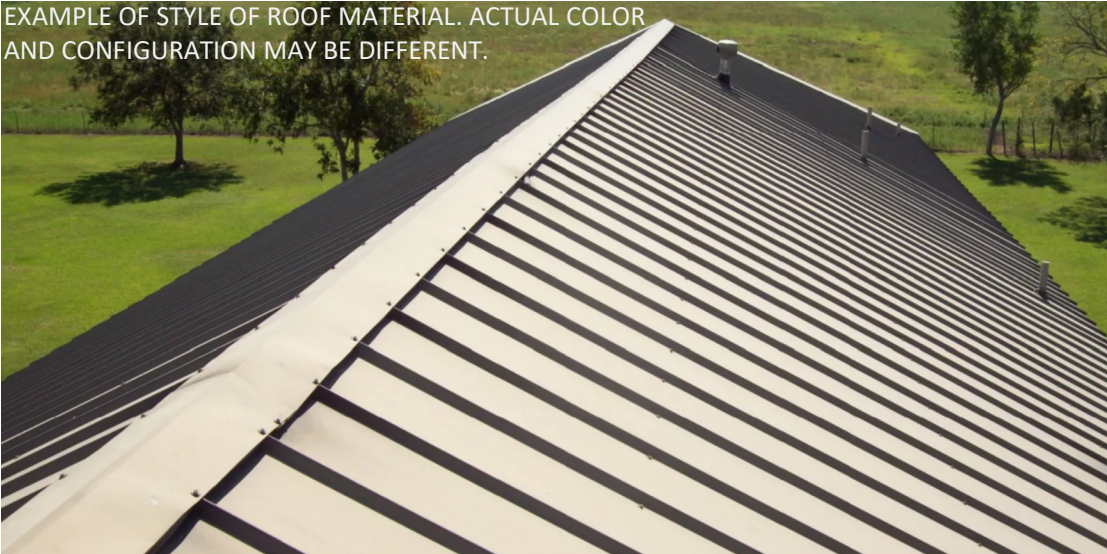
(c) 2025 em architecture llc

MAIN FIRE STATION
 36930 EAST HISTORIC
 COLUMBIA RIVER HWY

CONCEPT DOCUMENTS
 01.15.2025

**BUILDING
 SECTIONS**

STANDING SEAM METAL ROOF



EXAMPLE OF STYLE OF ROOF MATERIAL. ACTUAL COLOR AND CONFIGURATION MAY BE DIFFERENT.

Regal White
SRI 85

Sandstone
SRI 71

Colonial Red
SRI 33

Slate Gray
SRI 41

Dark Gray
SRI 33

Evergreen
SRI 24

Light Bronze
SRI 32

Dark Bronze
SRI 20

Matte Black
SRI 24

**Weathered Zinc
SRI 30

12" coverage
Flush Panel
1"

Flat Pan or Bead Ribs or Striations
17 5/8" coverage
Clip Loc
1 7/8"

1/2" 3/8" 1 1/2"
Flat Pan or Bead Ribs or Striations
16" coverage
MI 150

13/16" 1/2" 7 1/16" 1 1/2"
Flat Pan or Bead Ribs or Striations
18" coverage
MI 210

13/16" 1 1/2" 2 1/32" 2"
Flat Pan or Bead Ribs or Striations
17 1/2" coverage
MI 275

Colors listed above are intended to be close representations. Actual color chips are available upon request. Please verify color, gauge, and profile availability. Contact us for other color variations and their associated lead times. * PVDF = Polyvinylidene Fluoride, such as Kynar 500® or Hylar 5000®,etc. **Metallic Colors are batch sensitive & directional in nature. We strongly advise against mixing batches on any project.

OVERHEAD DOORS WITH GLAZED PANELS



EXAMPLE OF STYLE OF OVERHEAD DOOR. ACTUAL COLOR AND CONFIGURATION MAY BE DIFFERENT.

Wayne Dalton
COMMERCIAL DOORS

MODEL C-24
SECTIONAL STEEL DOORS

STRONG, VISUALLY APPEALING DOORS FOR MODERATE TO HEAVY-DUTY COMMERCIAL APPLICATIONS

Wayne Dalton's C-24 sectional steel doors are available in a wide variety of sizes and configurations. The design provides high strength at an excellent value.

Featuring 24-gauge ribbed steel sections and 20-gauge center and end stiles, Model C-24 is available with a number of lite and insulation options.

24-GAUGE STEEL CONSTRUCTION

PROVEN STRENGTH AND DURABILITY

STANDARD SIZES UP TO 30'2" WIDE AND 22'1" HIGH

SECTIONAL STEEL DOOR

LITE OPTIONS

Vision lites

Full-view lites

FINISH OPTIONS

White

Brown

BOARD AND BATTEN SIDING



EXAMPLE OF STYLE OF WALL SIDING. ACTUAL COLOR AND CONFIGURATION MAY BE DIFFERENT.

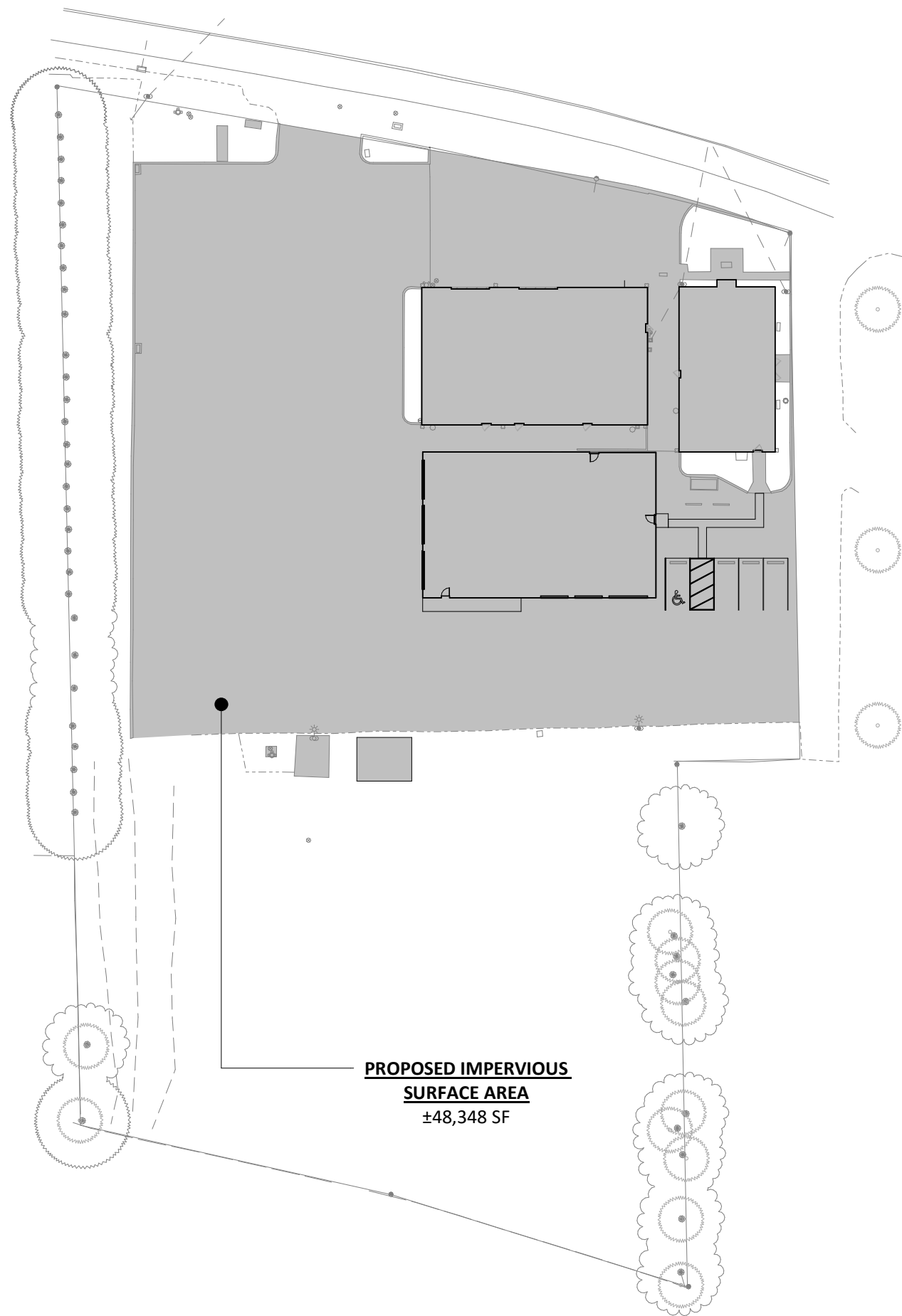


architecture and planning
1001 se sandy blvd, portland or 97214
503.544.7210 enr@emarchitecture.net

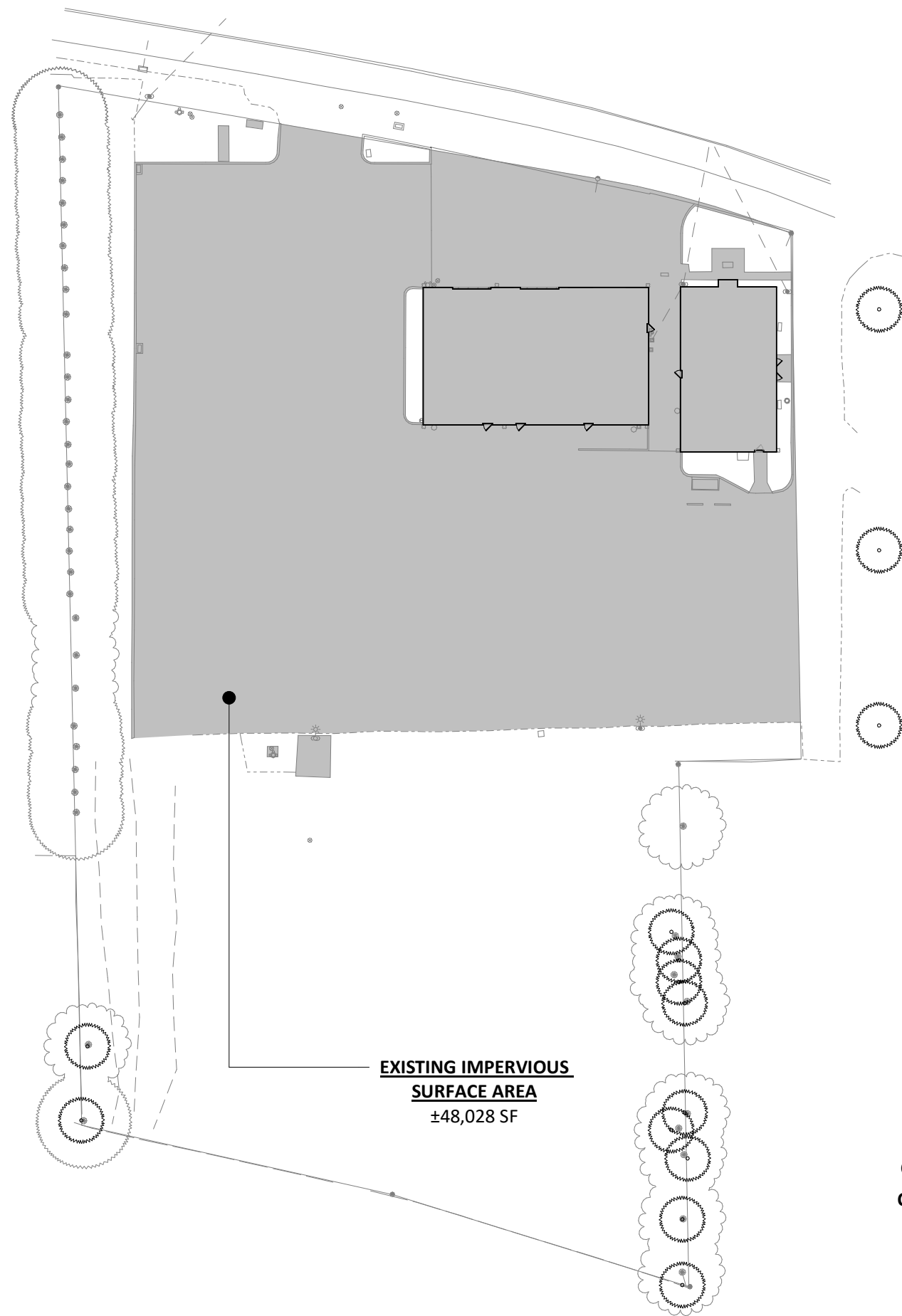
(c) 2025 em architecture llc

MAIN FIRE STATION
36930 EAST HISTORIC
COLUMBIA RIVER HWY
CONCEPT DOCUMENTS
01.15.2025

COLORS AND
MATERIALS



2 SITE PLAN
1" = 50'-0"



1 SITE PLAN
1" = 50'-0"