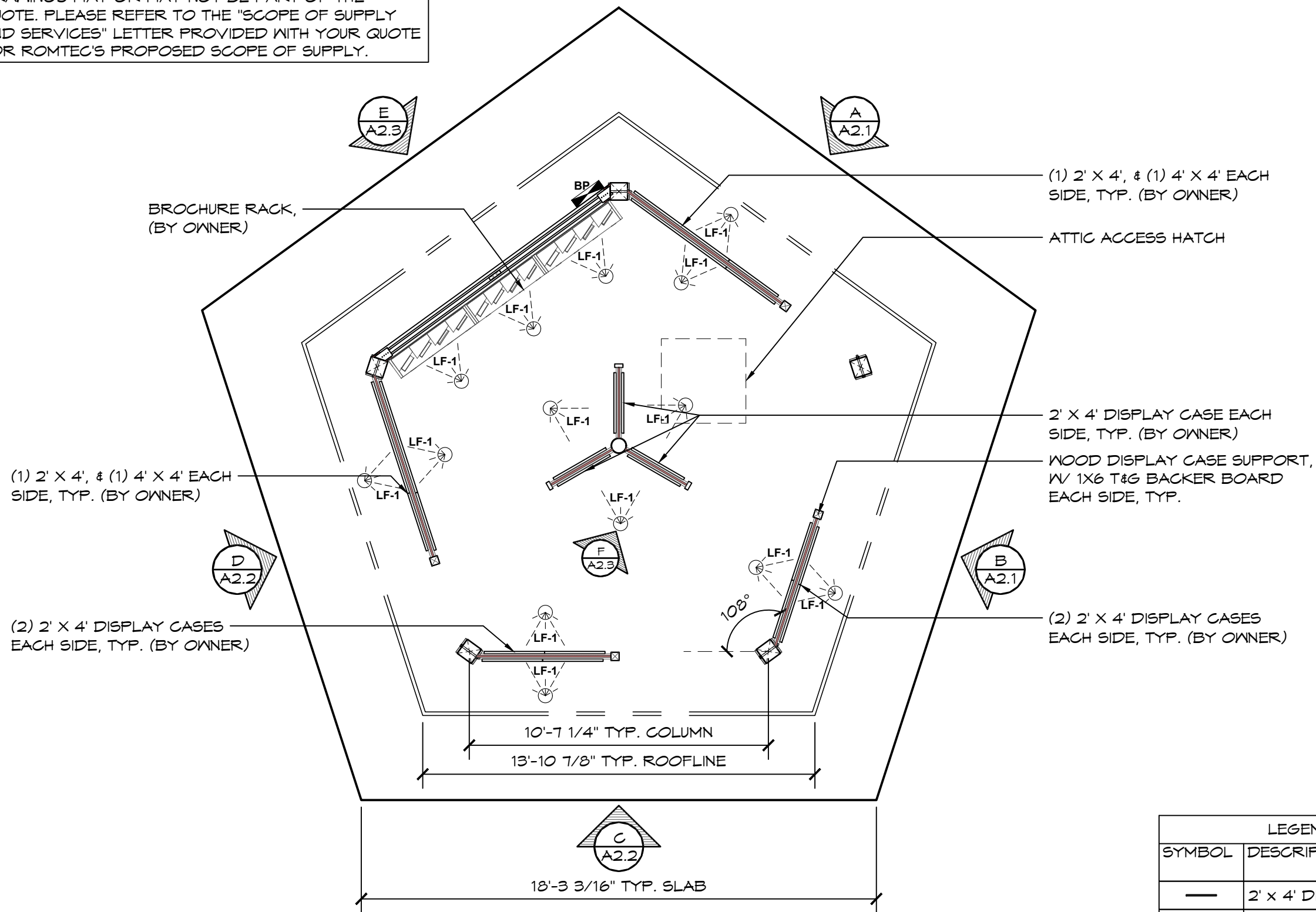


THESE PLAN VIEW AND ELEVATION DRAWINGS ARE A PRELIMINARY ARCHITECTURAL REPRESENTATION OF THE BUILDING. ALL DIMENSIONS, FEATURES AND COMPONENTS SHOWN ON THESE PRELIMINARY DRAWINGS MAY OR MAY NOT BE PART OF THE QUOTE. PLEASE REFER TO THE "SCOPE OF SUPPLY AND SERVICES" LETTER PROVIDED WITH YOUR QUOTE FOR ROMTEC'S PROPOSED SCOPE OF SUPPLY.

NOT FOR CONSTRUCTION



1 FLOOR PLAN
SCALE: 1/4" = 1'-0"

LEGEND- BY OWNER		
SYMBOL	DESCRIPTION	AREA/ QUANTITY
—	2' x 4' DISPLAY CASE	18
—	4' x 4' DISPLAY CASE	4
▨	BROCHURE RACK	1

© 2024 ROMTEC, INC. ALL RIGHTS RESERVED. THESE PLANS AND DRAWINGS MAY NOT BE REPRODUCED, ADAPTED OR FURTHER DISTRIBUTED, AND NO BUILDINGS MAY BE CONSTRUCTED FROM THESE PLANS, WITHOUT THE WRITTEN PERMISSION OF ROMTEC, INC.

PROJECT: MULTNOMAH FALLS KIOSK
CASCADE LOCKS, OREGON

PLAN SET# MFK01
DATE: 03/27/2024

REVISIONS

REV.	DATE	BY

DRAWN BY: ZM

SHEET NO. A1.1

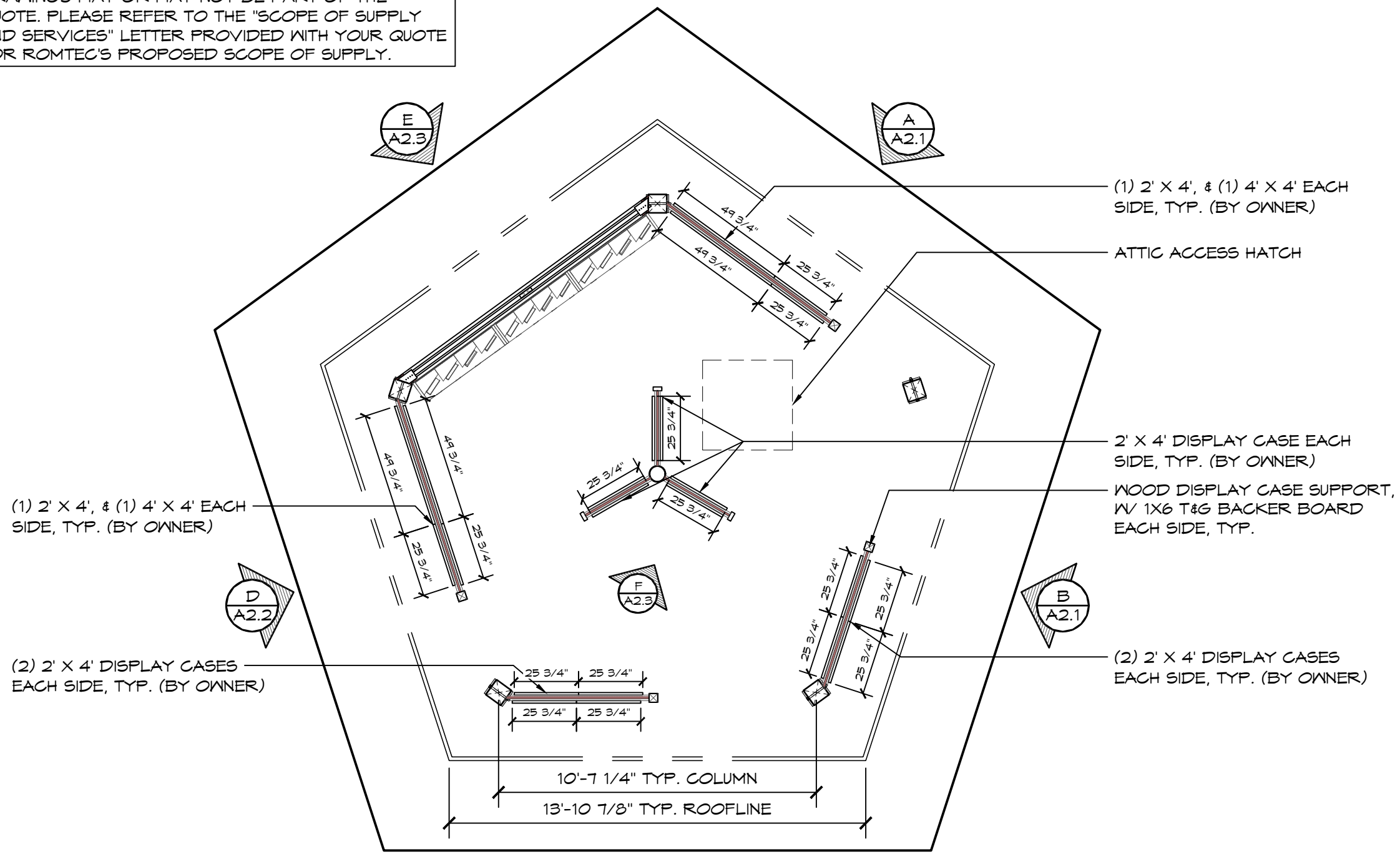
PSE Consulting Engineers, Inc.
www.structure1.com
Klamath Falls Office
250 Main Klamath Falls, Oregon 97603
Phone: (541) 850-6300 Fax: (541) 850-6233
info@structure1.com

ROMTEC 224-003

18240 NORTH BANK ROAD
ROSEBURG, OR 97470
(541) 496-3541 FAX (541) 496-0803

THESE PLAN VIEW AND ELEVATION DRAWINGS ARE A PRELIMINARY ARCHITECTURAL REPRESENTATION OF THE BUILDING. ALL DIMENSIONS, FEATURES AND COMPONENTS SHOWN ON THESE PRELIMINARY DRAWINGS MAY OR MAY NOT BE PART OF THE QUOTE. PLEASE REFER TO THE "SCOPE OF SUPPLY AND SERVICES" LETTER PROVIDED WITH YOUR QUOTE FOR ROMTEC'S PROPOSED SCOPE OF SUPPLY.

NOT FOR CONSTRUCTION



(1) 2' X 4', & (1) 4' X 4' EACH SIDE, TYP. (BY OWNER)

(2) 2' X 4' DISPLAY CASES EACH SIDE, TYP. (BY OWNER)

(1) 2' X 4', & (1) 4' X 4' EACH SIDE, TYP. (BY OWNER)

ATTIC ACCESS HATCH

2' X 4' DISPLAY CASE EACH SIDE, TYP. (BY OWNER)

WOOD DISPLAY CASE SUPPORT, W/ 1X6 T&G BACKER BOARD EACH SIDE, TYP.

(2) 2' X 4' DISPLAY CASES EACH SIDE, TYP. (BY OWNER)

LEGEND- BY OWNER		
SYMBOL	DESCRIPTION	AREA/ QUANTITY
—	2' x 4' DISPLAY CASE	18
—	4' x 4' DISPLAY CASE	4
▨	BROCHURE RACK	1

1 DISPLAY CASE DIMENSIONS
SCALE: 1/4" = 1'-0"

© 2024 ROMTEC, INC. ALL RIGHTS RESERVED. THESE PLANS AND DRAWINGS MAY NOT BE REPRODUCED, ADAPTED OR FURTHER DISTRIBUTED, AND NO BUILDINGS MAY BE CONSTRUCTED FROM THESE PLANS, WITHOUT THE WRITTEN PERMISSION OF ROMTEC, INC.

PROJECT: MULTNOMAH FALLS KIOSK
CASCADE LOCKS, OREGON

ROMTEC 224-003

18240 NORTH BANK ROAD
ROSEBURG, OR 97470
(541) 486-3541 FAX (541) 496-0803

www.structure1.com
Klamath Falls Office
250 Main Klamath Falls, Oregon 97603
Phone: (541) 850-6300 Fax: (541) 850-6233
info@structure1.com

PSE Consulting Engineers, Inc.

PLAN SET# MFKO1
DATE: 03/27/2024

REV.	DATE	BY

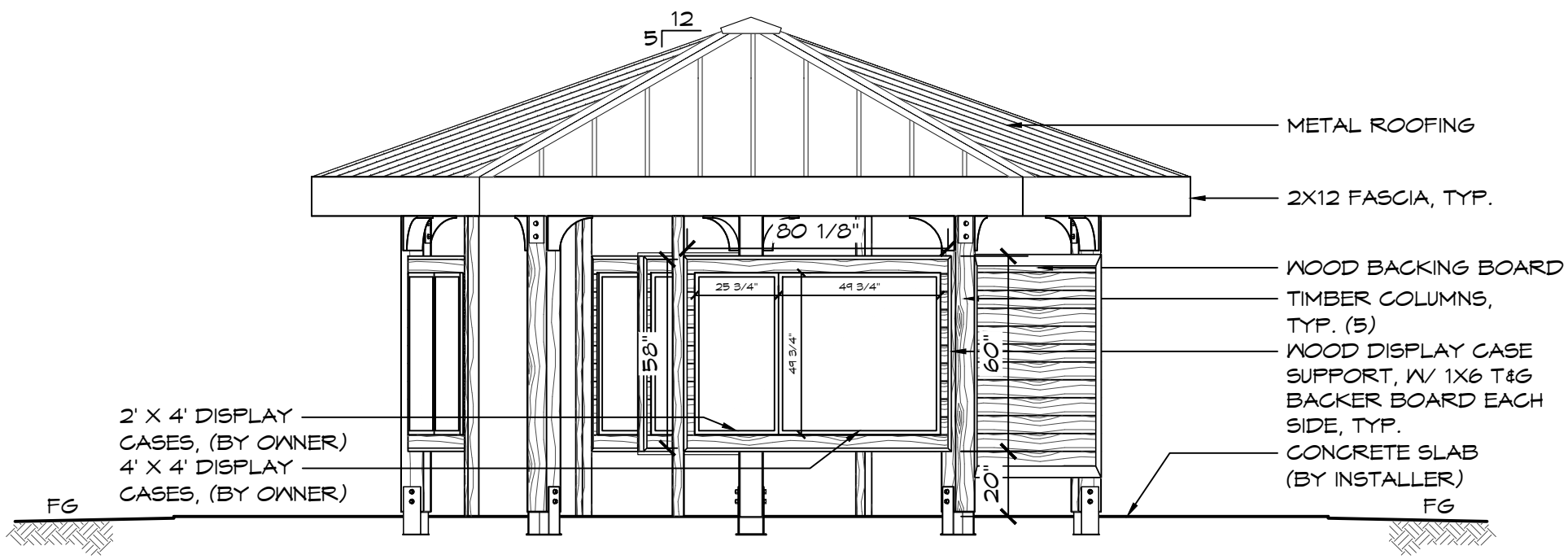
DRAWN BY: ZM

SHEET TITLE: DISPLAY CASE DIMENSIONS

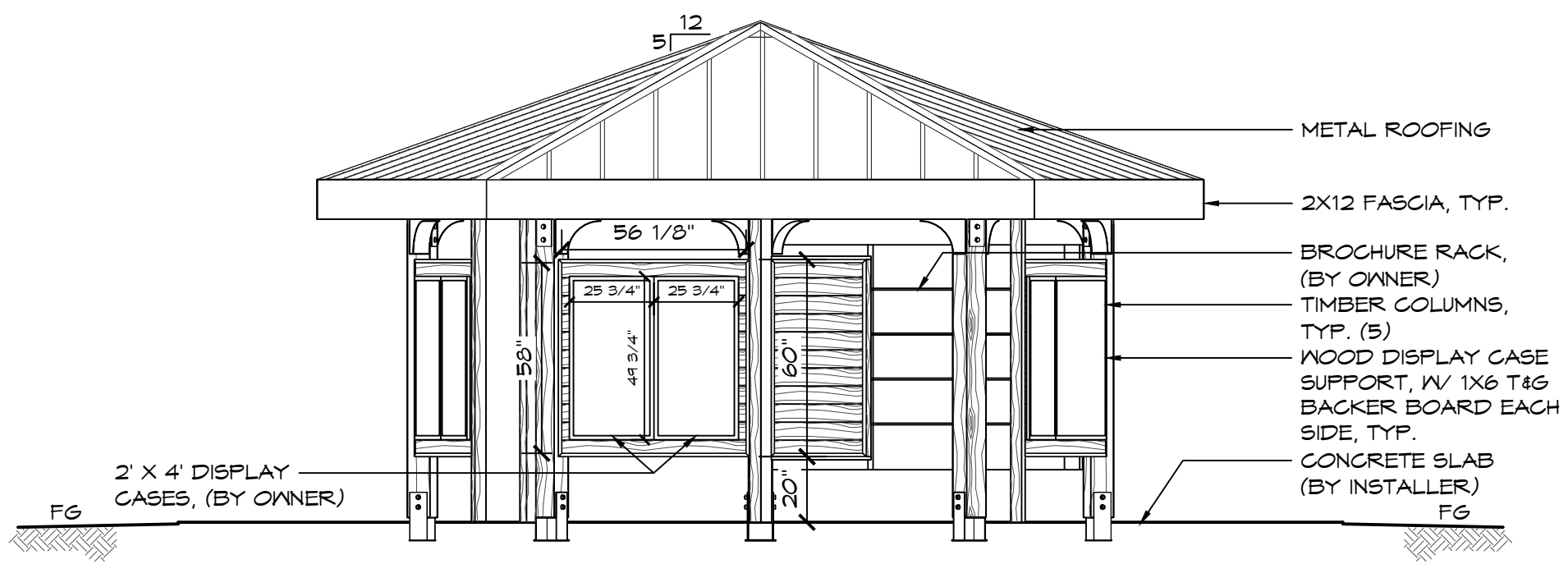
SHEET NO.

A1.1

NOT FOR
CONSTRUCTION



A ELEVATION VIEW
SCALE: 1/4" = 1'-0"



B ELEVATION VIEW
SCALE: 1/4" = 1'-0"

THESE PLAN VIEW AND ELEVATION DRAWINGS ARE A PRELIMINARY ARCHITECTURAL REPRESENTATION OF THE BUILDING. ALL DIMENSIONS, FEATURES AND COMPONENTS SHOWN ON THESE PRELIMINARY DRAWINGS MAY OR MAY NOT BE PART OF THE QUOTE. PLEASE REFER TO THE "SCOPE OF SUPPLY AND SERVICES" LETTER PROVIDED WITH YOUR QUOTE FOR ROMTEC'S PROPOSED SCOPE OF SUPPLY.

© 2024 ROMTEC, INC. ALL RIGHTS RESERVED. THESE PLANS AND DRAWINGS MAY NOT BE REPRODUCED, ADAPTED OR FURTHER DISTRIBUTED, AND NO BUILDINGS MAY BE CONSTRUCTED FROM THESE PLANS, WITHOUT THE WRITTEN PERMISSION OF ROMTEC, INC.

PROJECT:
MULTNOMAH FALLS KIOSK
CASCADE LOCKS, OREGON

SHEET TITLE: EXTERIOR ELEVATION VIEWS

PLAN SET#
MFK01

DATE:
03/27/2024

REV.	DATE	BY
2	02-12-2024	ZM

DRAWN BY:
ZM

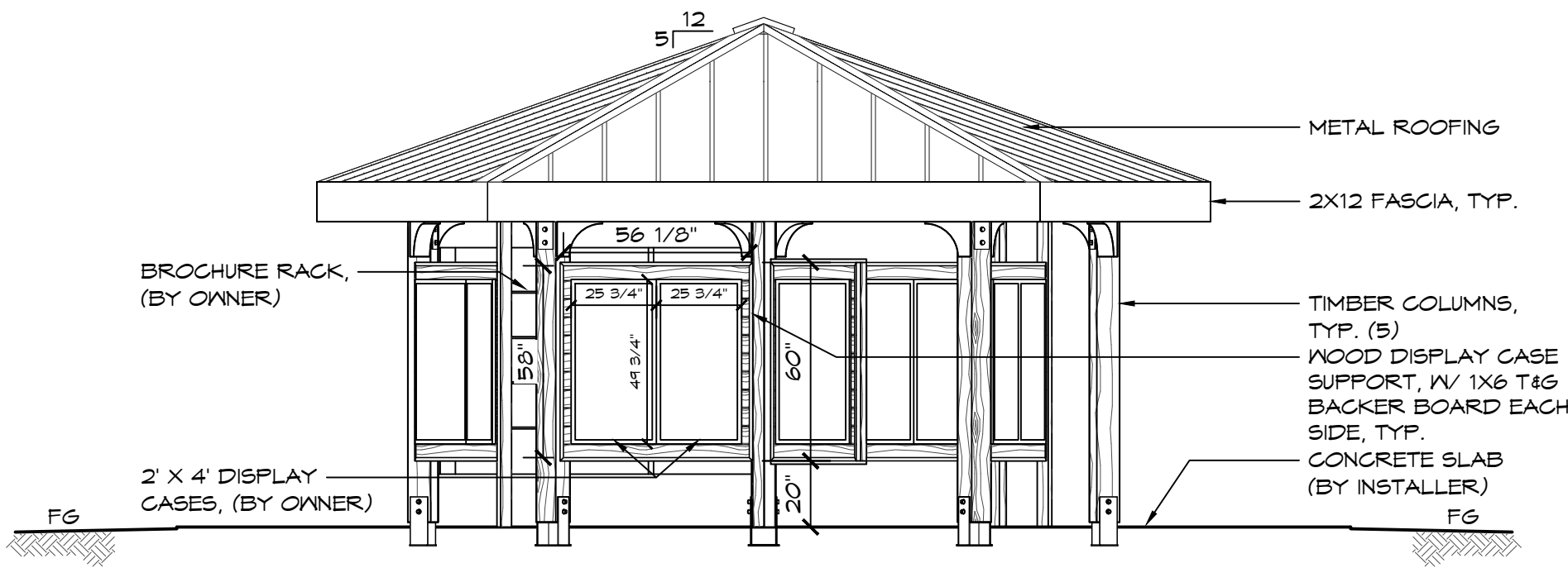
PSE Consulting Engineers, Inc.
www.structure1.com
Klamath Falls Office
250 Main Klamath Falls, Oregon 97603
Phone: (541) 850-6300 Fax: (541) 850-6233
info@structure1.com

ROMTEC 224-003

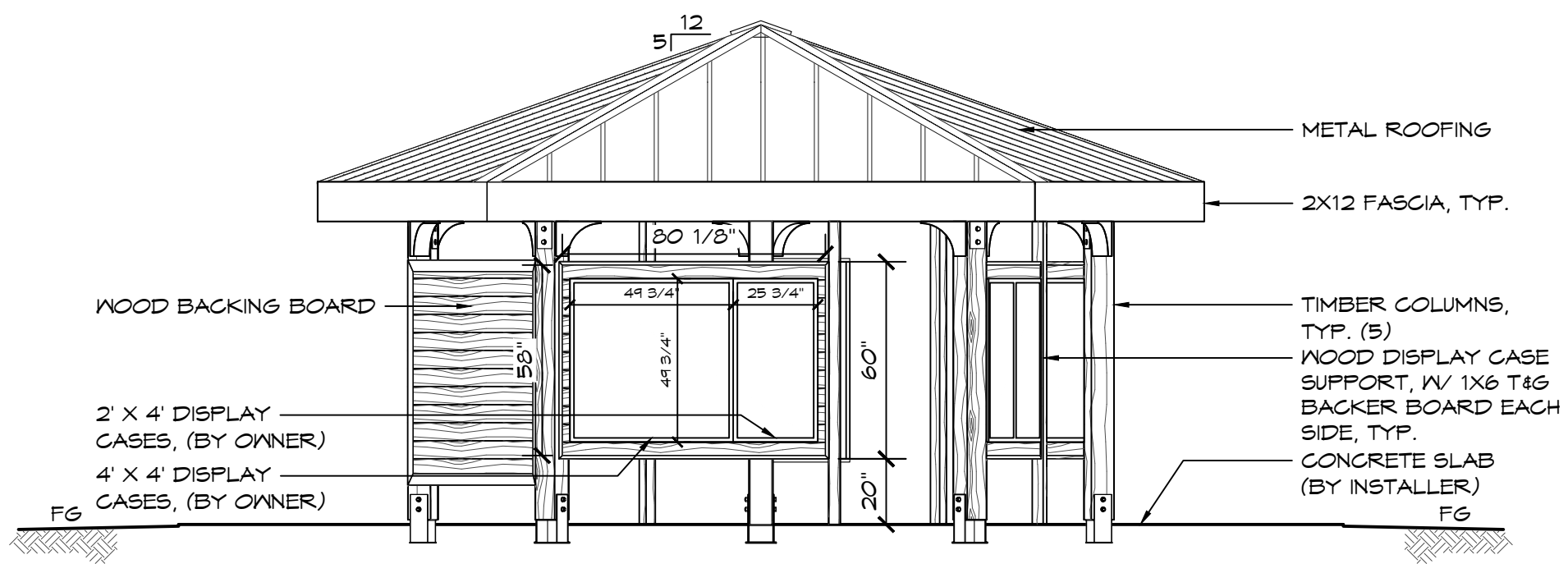
18240 NORTH BANK ROAD
ROSEBURG, OR 97470
(541) 486-3541 FAX (541) 486-0803

SHEET NO.
A2.1

NOT FOR
CONSTRUCTION



C ELEVATION VIEW
SCALE: 1/4" = 1'-0"



D ELEVATION VIEW
SCALE: 1/4" = 1'-0"

THESE PLAN VIEW AND ELEVATION DRAWINGS ARE A PRELIMINARY ARCHITECTURAL REPRESENTATION OF THE BUILDING. ALL DIMENSIONS, FEATURES AND COMPONENTS SHOWN ON THESE PRELIMINARY DRAWINGS MAY OR MAY NOT BE PART OF THE QUOTE. PLEASE REFER TO THE "SCOPE OF SUPPLY AND SERVICES" LETTER PROVIDED WITH YOUR QUOTE FOR ROMTEC'S PROPOSED SCOPE OF SUPPLY.

© 2024 ROMTEC, INC. ALL RIGHTS RESERVED. THESE PLANS AND DRAWINGS MAY NOT BE REPRODUCED, ADAPTED OR FURTHER DISTRIBUTED, AND NO BUILDINGS MAY BE CONSTRUCTED FROM THESE PLANS, WITHOUT THE WRITTEN PERMISSION OF ROMTEC, INC.

PROJECT:
MULTNOMAH FALLS KIOSK
CASCADE LOCKS, OREGON

ROMTEC 224-003

PSE Consulting Engineers, Inc.
www.structure1.com
Klamath Falls Office
250 Main Klamath Falls, Oregon 97603
Phone: (541) 850-6300 Fax: (541) 850-6233
info@structure1.com

18240 NORTH BANK ROAD
ROSEBURG, OR 97470
(541) 486-3541 FAX (541) 486-0803

ROMTEC

PLAN SET#
MFK01

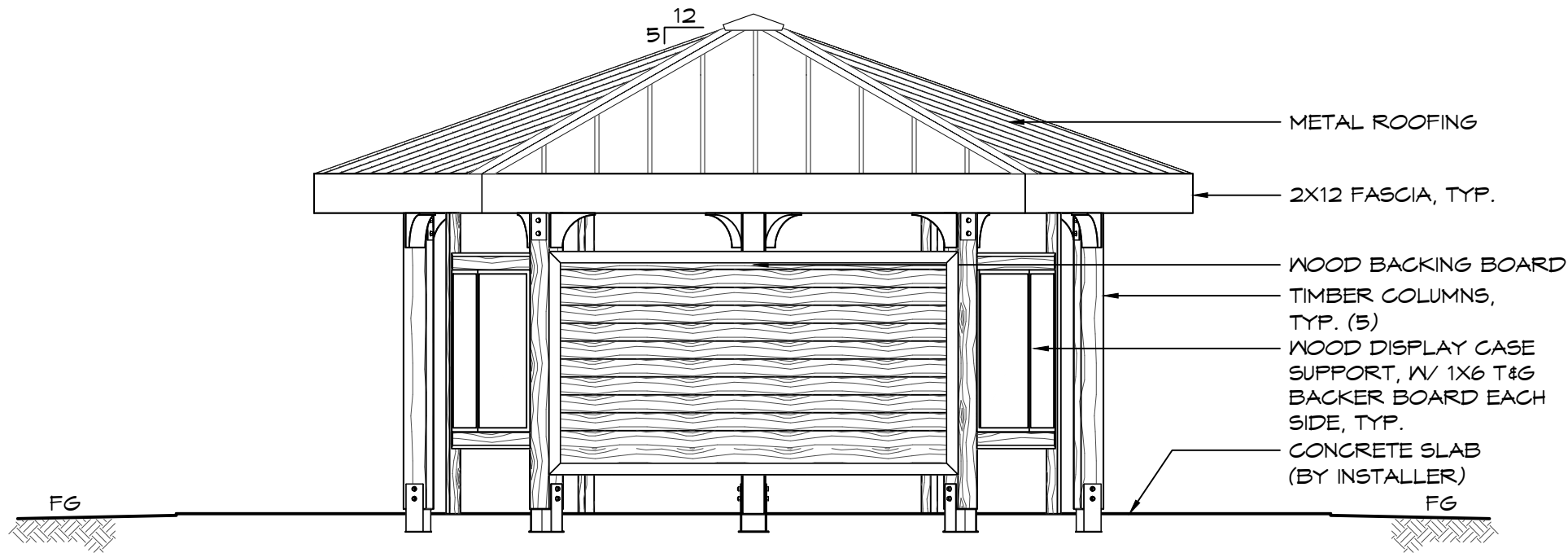
DATE:
03/27/2024

REVISIONS

REV.	DATE	BY
2	02-12-2024	ZM

DRAWN BY:
ZM

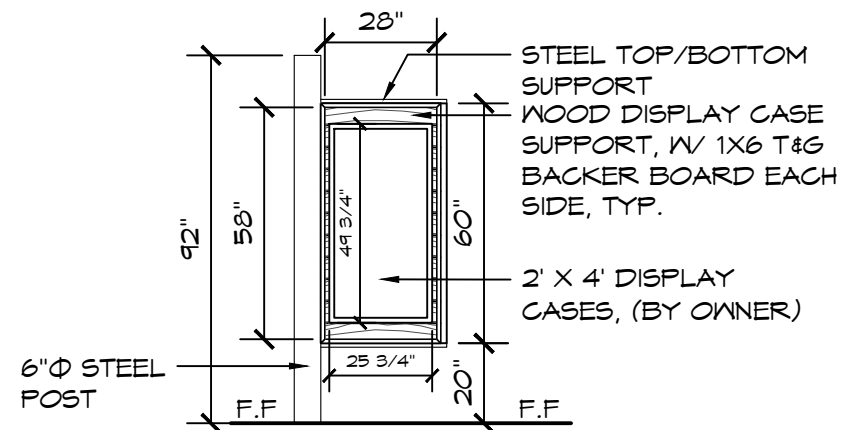
SHEET NO.
A2.2



E ELEVATION VIEW
SCALE: 1/4" = 1'-0"

NOT FOR
CONSTRUCTION

THESE PLAN VIEW AND ELEVATION DRAWINGS ARE A PRELIMINARY ARCHITECTURAL REPRESENTATION OF THE BUILDING. ALL DIMENSIONS, FEATURES AND COMPONENTS SHOWN ON THESE PRELIMINARY DRAWINGS MAY OR MAY NOT BE PART OF THE QUOTE. PLEASE REFER TO THE "SCOPE OF SUPPLY AND SERVICES" LETTER PROVIDED WITH YOUR QUOTE FOR ROMTEC'S PROPOSED SCOPE OF SUPPLY.



F CENTER POST SIGN DETAIL
SCALE: 1/4" = 1'-0"

© 2024 ROMTEC, INC. ALL RIGHTS RESERVED. THESE PLANS AND DRAWINGS MAY NOT BE REPRODUCED, ADAPTED OR FURTHER DISTRIBUTED, AND NO BUILDINGS MAY BE CONSTRUCTED FROM THESE PLANS, WITHOUT THE WRITTEN PERMISSION OF ROMTEC, INC.

PROJECT:
MULTNOMAH FALLS KIOSK
CASCADE LOCKS, OREGON

ROMTEC 224-003

www.structure1.com
Klamath Falls Office
250 Main Klamath Falls, Oregon 97603
Phone: (541) 850-6300 Fax: (541) 850-6233
info@structure1.com

18240 NORTH BANK ROAD
ROSEBURG, OR 97470
(541) 486-3541 FAX (541) 486-0803

ROMTEC

EXTERIOR ELEVATION VIEWS

PLAN SET#
MFK01

DATE:
03/27/2024

REV.	DATE	BY
2	02-12-2024	ZM

DRAWN BY:
ZM

SHEET NO.
A2.3