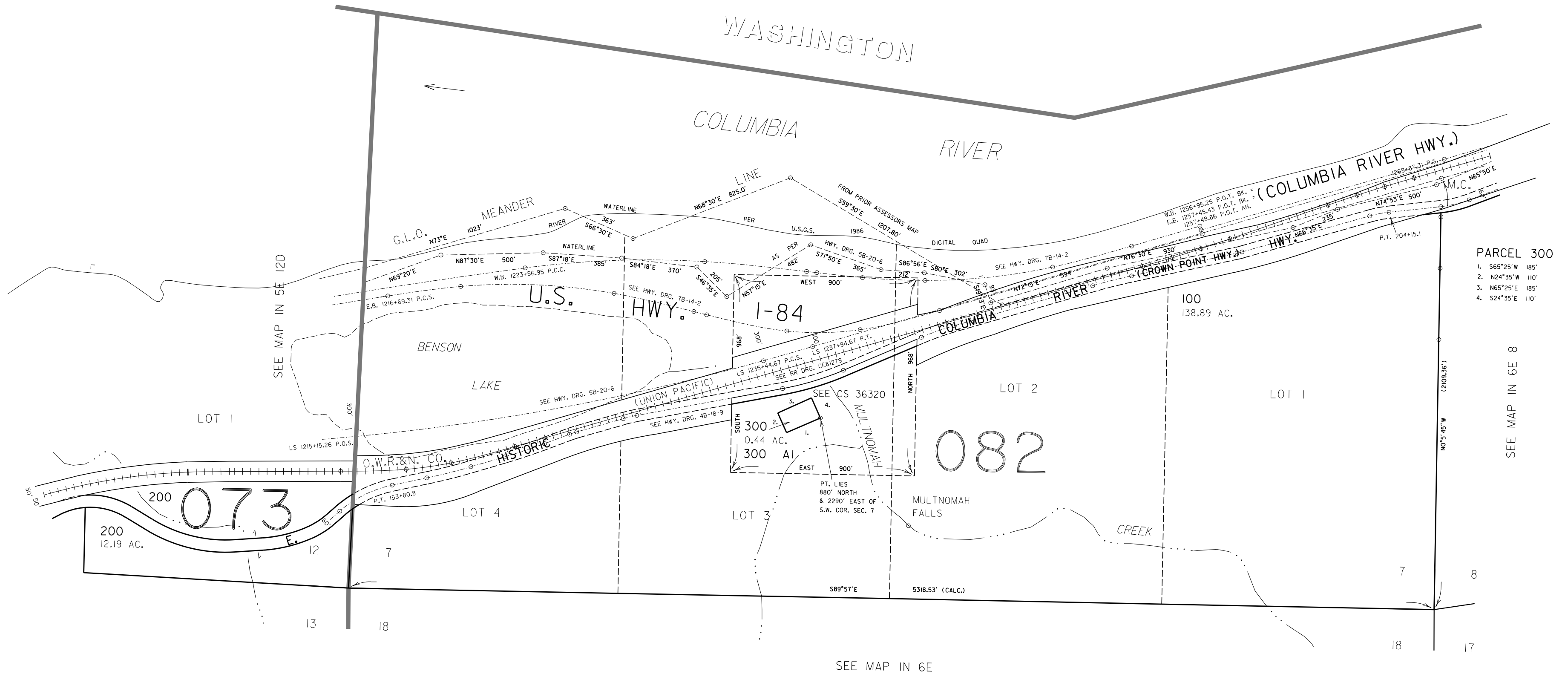


THIS MAP WAS PREPARED FOR  
ASSESSMENT PURPOSE ONLY

SECTION 7 T.1N. R.6E. W.M.  
MULTNOMAH COUNTY

1" = 400'

IN 6E 7



- PARCEL 300
1. S65°25'W 185'
  2. N24°35'W 110'
  3. N65°25'E 185'
  4. S24°35'E 110'

SEE MAP IN 6E 8

SEE MAP IN 6E

IN 6E 7

Exhibit B.2