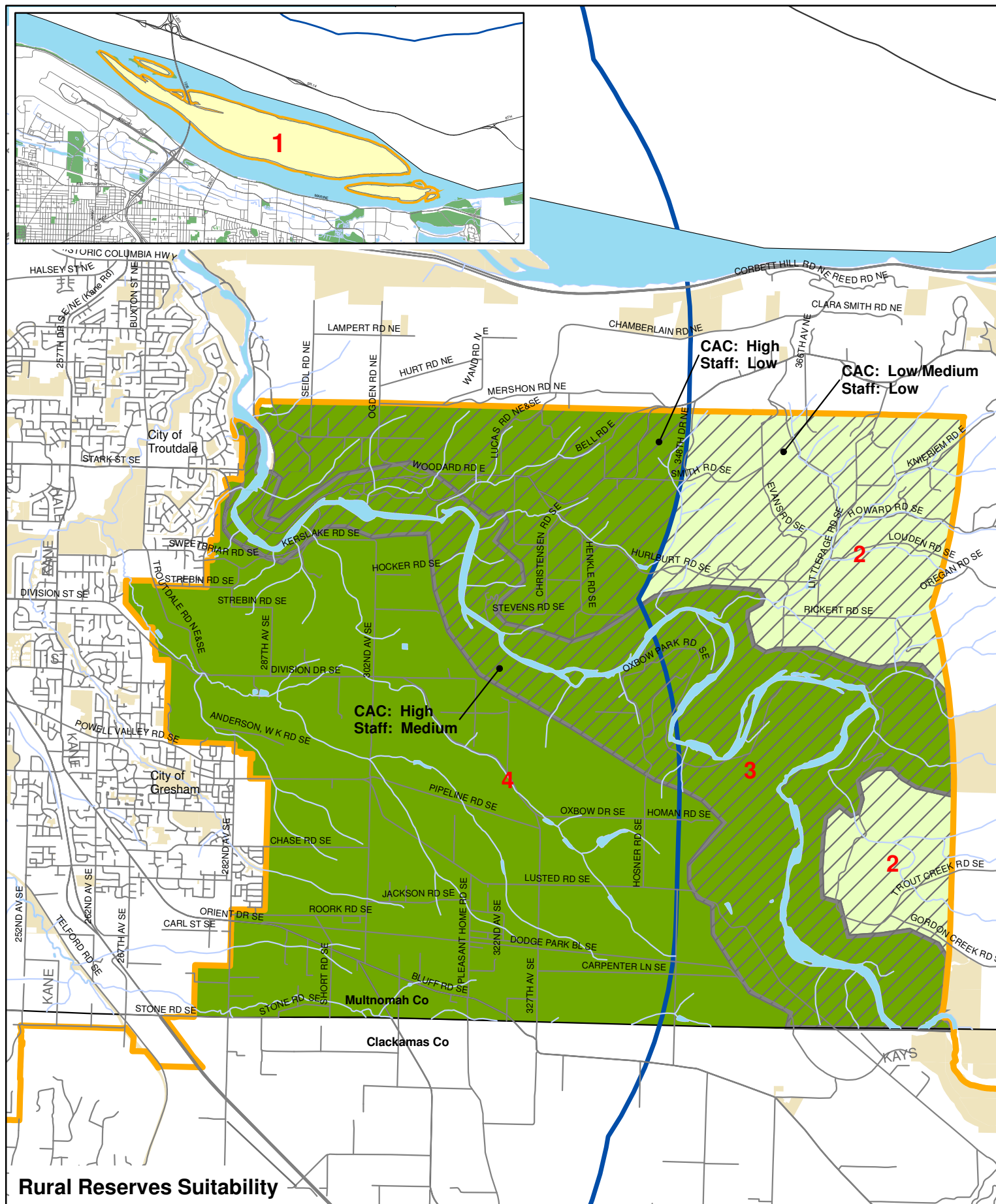
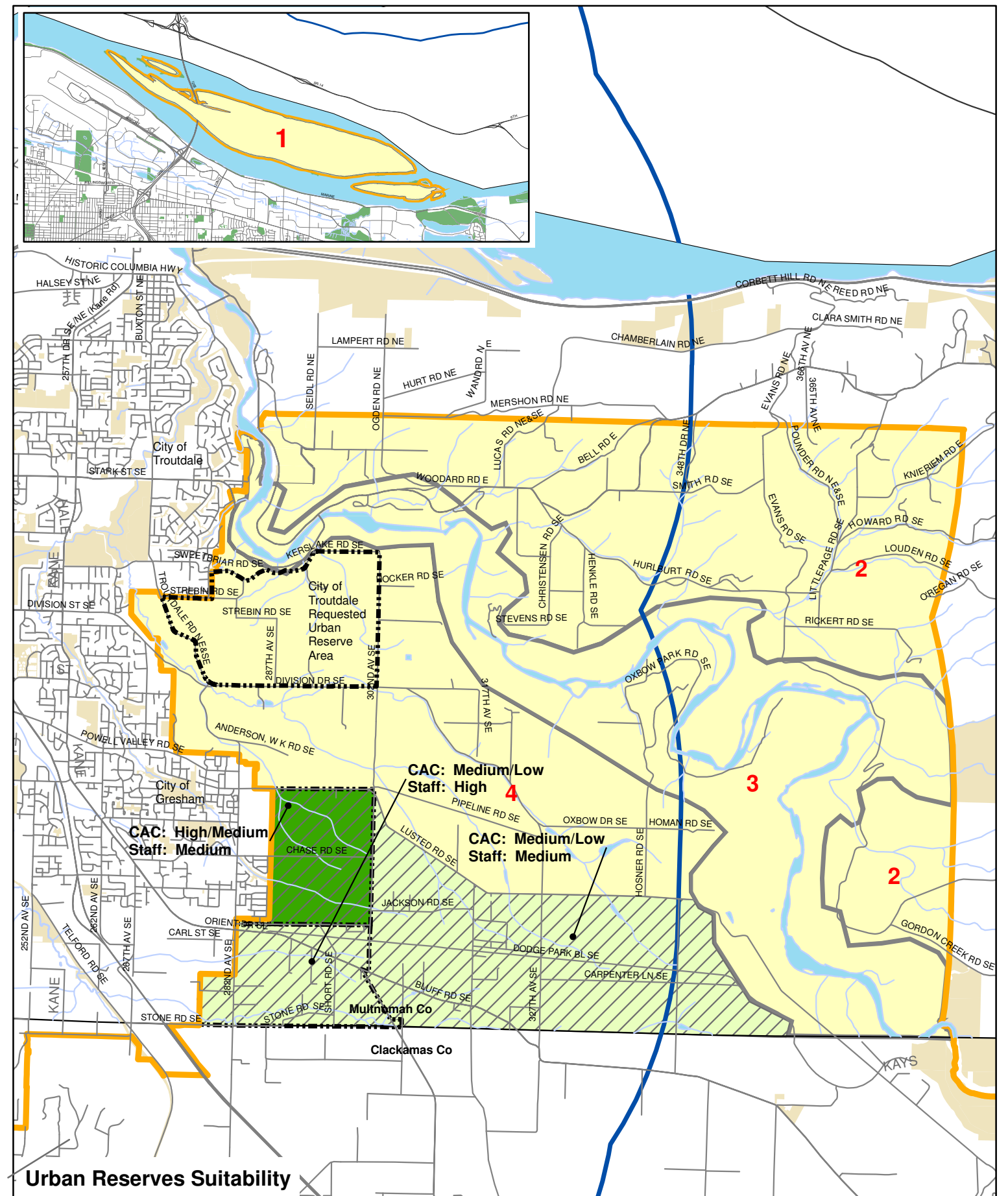


Multnomah County Rural Suitability Assessments (Staff and CAC)									
Rural Reserve Factor	Area 1: Government, McGuire, Lemon Islands	Area 2: East of Sandy River	Area 3: Sandy River Canyon	Area 4: West of Sandy River	Area 5: NW Hills North	Area 6: West Hills South	Area 7: Powerline/ Germantown Road-South	Area 8: Sauvie Island	Area 9: Multnomah Channel
Factor 2a: Situated in an area otherwise subject to urbanization	Low	Low. CAC: High for area within 1 or 2 miles of UGB, low for remaining area.	Low	High	High	High	Low above mid-slope. High below. CAC: High for all Area 7.	Low.	Low north of Sauvie Island bridge. High south of the bridge.
Factor 2b: Capable of sustaining long-term agriculture or forestry	Low	High	Low	High	High	High	Low.	High	Low
Factor 2c: Suitable soils and water	Low	High	High	High	High	Med. farm. High: Forest	High	High	Low
Factor 2d: Large block, concentration or clusters of farm or forest uses. Land use pattern including parcelization, tenure and ownership	Low	Med	High	High	High	Med. farm	Med	High	Low
Factor 2e: Adjacent land use pattern, existence of buffers	High	High	Med	High	High	High	Low: Farm blocks, Low/Med, woodlots	High	Low
Factor 2f: The land use pattern including parcelization, tenure and ownership	Low	High	Med	Med/High	High	High	Low	Med	Low
Factor 2g: Sufficiency of agricultural or forestry infrastructure	Unknown	High	High	Med	High	Med/High	Med/High	Med	Low
Factor 3: For land intended to protect important natural landscape features, consider areas on the Landscape Features Inventory and other pertinent information and consider whether the land	High	Low	High	Low	High	Low south of Skyline. High north of Skyline.	Med	Med	High
Factor 3a: Subject to disasters or hazards	High	High	High	High	High	Med for the Kaiser Rd and east of Abbey Cr. Areas.	High	High	Med
Factor 3b: Important fish and wildlife habitat	Low	Low	Low	High: Beaver Cr. Low: other areas.	Med	Low	High	Low	Low
Factor 3c: Necessary to protect water quality	Low	Low	Low	High	High	High	Low, except Med for Abbey Cr. Headwaters. CAC Split: Low-6 Med-3, High-2.	Low	Med/low
Factor 3d: Provides a sense of place	High	Low	High	Low	High	High	High	High	Med/low
Factor 3e: Can serve as a boundary or buffer between urban and rural uses or natural resource uses.	Low	Low	High	High	Med	Low	High	Low	Low
Factor 3f: Provides for separation between cities	Low	Low	Low	Low	Low	Low	Low.	Low	Low
Factor 3g: Provides easy access to recreational Foundation or Important Ag Land?	Low	Low	High	High	Unknown	High	High	High	Low
Staff Rural Suitability Assessment	Low	Important	Foundation	Foundation	Foundation	Important	No	Foundation	Foundation
Staff Rural Suitability Assessment	Low	Low - Isolated from urban area by Sandy River Canyon.	Low suitability to protect forest resources; medium suitability to protect landscape features.	High suitability for rural reserve to protect farm resources. Med suitability for rural reserve to protect landscape features for the Beaver Cr. area.	High suitability for rural reserve to protect farm/forest resources, and Med to protect landscape features in the Plainview area. Low suitability elsewhere.	High suitability of the area south of Skyline Blvd. for rural reserve to protect farm and forest resources and to protect landscape features.	Low suitability for farm and forest resources. High for landscape features except east edge of N. Bethany planning area within the Lower Springville Rd. area = Low.	High suitability for farm and landscape features.	Low Suitability
CAC Rural Suitability Assessment	Low	High suitability west of 3-mile UGB line; Low/medium suitability east of 3-mile UGB line.	High Suitability	High Suitability	CAC high suitability to protect farm and forest features and landscape features.	High suitability West of McNamee; Low suitability east of McNamee	Split between medium and high suitability.	Med/High suitability for rural reserve. All factors received a high or medium ranking for Area 8 save factor 2a/3a. However, Sauvie Island is close enough in proximity to be concerned about, thus Area 8 is worth designating as a higher suitability for rural reserve. Additionally, part of Sauvie Island lies within safe harbor.	Low Suitability





**Rural Reserves Suitability**



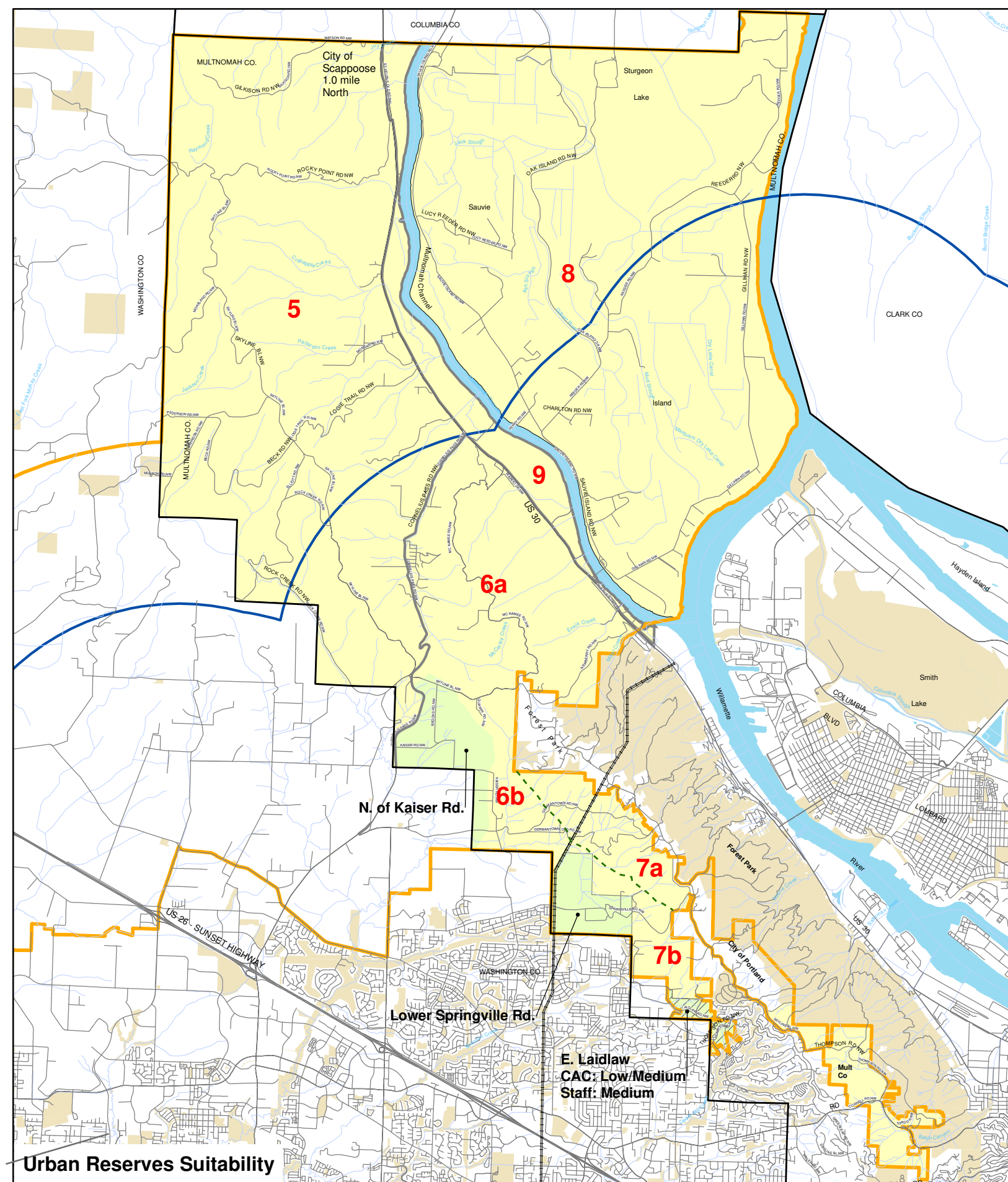
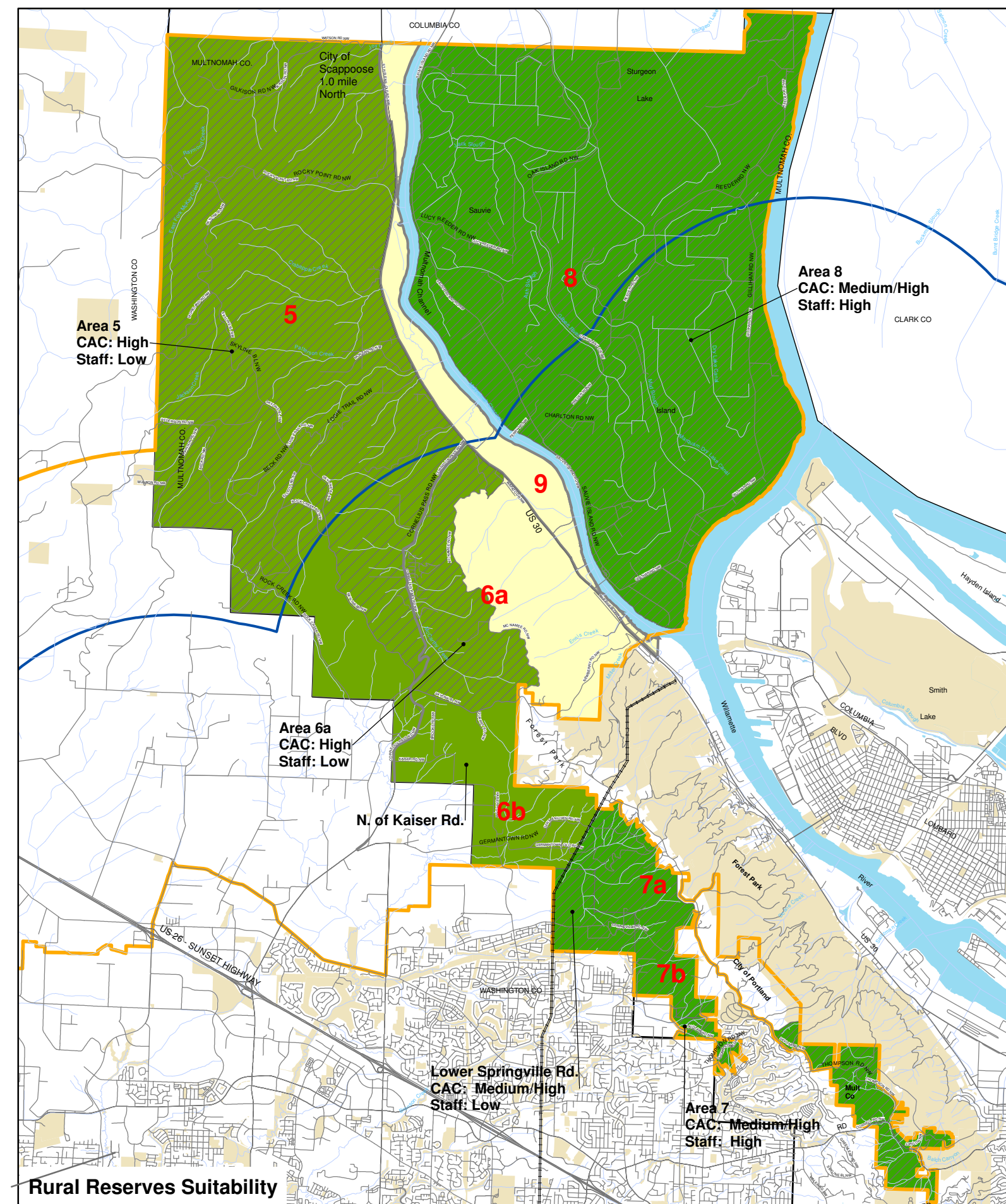
**Urban Reserves Suitability**

East Multnomah County Reserves Suitability Assessments:  
 Areas 1, 2, 3 & 4 - Government Island, East of Sandy River,  
 Sandy River Canyon & West of Sandy River  
 Draft - 09/26/09

- Low Suitability
- Medium/Low Suitability
- Medium Suitability
- Medium/High Suitability
- High Suitability
- Staff Assessment Differs
- UGB 3-mi Buffer
- Study Area Boundary







West Multnomah County Reserves Suitability Assessments:  
 Areas 5, 6, 7, 8 & 9 - NW Hills North, NW Hills South, Powerline/Germantown, Sauvie Island, Multnomah Channel  
 Draft - 09/26/09

Low Suitability	Medium/High Suitability	UGB 3-mi Buffer
Medium/Low Suitability	High Suitability	Study Area Boundary
Medium Suitability	Staff Assessment Differs	