

**Silver Falls State Park  
Rooster Rock State Park  
Banks Vernonia State Trail  
Stub Stewart State Park**

**Inadvertent Discovery Plan (IDP) for Cultural Resources**

**Project Information**

The Oregon Parks and Recreation Department (OPRD) is partnering with Rivian to install electric charging stations (Figures 1-8). This Inadvertent Discovery Plan will be followed by the contract archaeologist and Rivian construction contractors if archaeological material, an archaeological feature, human remains, sacred objects or an archaeological site are encountered at any time during the course of the projects.

**When to stop work:**

The project may uncover previously unidentified Native American or Euro-American artifacts. Artifacts may be undisturbed, or they may have been previously disturbed and then reburied during historic digging activities or natural geologic events. Artifacts may be associated with a known, recorded archaeological site in the vicinity, or they may be undocumented in the State Historic Preservation Office (SHPO) archaeological database of archaeological sites.

**Work must stop when the following types of artifacts and/or features are encountered and Native American artifacts may include (but are not limited to):**

- Human remains
- Shell middens (concentrations of marine shell, often burned and in dark soil with other artifacts);
- Flaked stone tools (arrowheads, knives, scrapers etc.), or waste flakes that resulted from the production of flaked stone tools;
- Ground stone tools like mortars and pestles;
- Layers (strata) of discolored earth resulting from fire hearths. May be black, red or mottled brown and often contain discolored cracked rocks or dark soil with broken shell;
- Structural remains- wooden beams, post holes, fish weirs.

**Euro-American artifacts (clearly 75 years of age or older) may include (but are not limited to):**

- Glass (from bottles, vessels, windows etc.);
- Ceramic (from dinnerware, vessels etc.);
- Metal (nails, drink/food cans, tobacco tins, industrial parts etc.);
- Building materials (bricks, shingles etc.);
- Building remains (foundations, architectural components etc.);
- Old Wooden Posts, pilings, or planks (these may be encountered above or below water);
- Remains of ships or sea-going vessels, marine hardware etc.;
- Old farm equipment may indicate historic resources in the area.

- At **Silver Falls State Park**, there is the possibility of finding historic curbing at near the South Falls parking area. However, the geologic material that was used to construct the curbs did not hold up over time, and pieces of this very weathered and unstable sandstone can be found throughout the park. In addition, when the sandstone material is found, it is unrecognizable as any type of archaeological feature and in some cases, has been used as fill material over the years. It is quite likely that the curbing has been removed or pushed out of the way during the re-curbing of the parking lot, but the sandstone erodes very quickly and is probably unrecognizable now. In turn, SHPO and OPRD have both agreed that if the sandstone material is found, it needs to be clearly modified to be proven as an archaeological feature.

### Steps to take if an inadvertent discovery is made:

1. In the event of an inadvertent discovery of human remains or archaeological material, **all work will stop immediately in the vicinity of the find. Keep the discovery confidential.**
2. A 30-meter buffer should be placed around the discovery to secure and protect it. Work can proceed outside of this buffered area unless additional cultural materials are encountered.
3. No work may resume until an OPRD archaeologist is able to assess the discovery and consult with the SHPO and Tribes within the next business day.
4. If possible **human remains** are encountered, **do not disturb them in any way. Secure the location. Do not call 911. Do not speak with the media. Do not take photos.** Work will not resume in the area of discovery until all parties involved agree upon a course of action. The OPRD archaeologist will contact the Tribes, Oregon State Police (OSP), Legislative Commission on Indian Services (LCIS) and SHPO. In the event that the OPRD archaeologist is not available, contact OSP, LCIS, SHPO, and the Tribes indicated by LCIS, and contact information is below.
5. Archaeological excavations may be required. This is handled on a case by case basis by the OPRD archaeologist and park manager, in consultation with SHPO and appropriate Tribes.

### Proceeding with Construction

- Construction can proceed only after the proper archaeological inspections have occurred. This requires close coordination with OPRD, the SHPO and the Tribes.
- After an inadvertent discovery, some areas may be specified by the OPRD archaeologist for close monitoring by an archaeologist. In coordination with the SHPO and the Tribes, the OPRD archaeologist will verify these identified areas and be sure that the areas are clearly demarcated in the field, as needed.

OPRD Contact Information		
Title	Name	Phone
OPRD Silver Falls Park Manager	Chris Gilliland	503-508-2175
OPRD Banks Vernonia & Stub Stewart Park Manager	Aaron Raines	541-591-5315
OPRD Rooster Rock District Manager	Clay Courtright	503-969-8260
OPRD Valley Region Archaeologist	Nancy Nelson	503-339-6713

<b>Contact Information</b>			
<b>Organization</b>	<b>Title</b>	<b>Contact</b>	<b>Phone/Email</b>
Oregon State Police (OSP)	OSP Lieutenant	Chris Heuberger	503-508-0779
Legislative Commission on Indian Services (LCIS)	LCIS Executive Director	Patrick Flanagan	503-986-1067
State Historic Preservation Office (SHPO)	Oregon State Archaeologist	John Pouley	503-480-9164
State Historic Preservation Office (SHPO)	Oregon Assistant State Archaeologist	Jamie French	503-979-7580
Confederated Tribes of Grand Ronde	Deputy Tribal Historic Preservation Officer, Manager of Historic Preservation Office	Briece Edwards	503-879-2084
Confederated Tribes of Grand Ronde	Cultural Protection Specialist	Christopher Bailey	503-879-1675
Confederated Tribes of Siletz Indians of Oregon	Cultural Resources Director	Robert Kentta	541-351-0148 (text) kentankyla@outlook.com
Confederated Tribes of the Umatilla Indian Reservation	Tribal Historic Preservation Officer/Senior Archaeologist	Carey Miller	(541)429-7234*
Confederated Tribes of the Warm Springs Reservation of Oregon	Cultural Resource Manager	Christian Nauer	541-420-2758
Nez Perce Tribe	Tribal Archaeologist	Pat Baird	208-791-8610*
Yakama Nation	Cultural Resources	Kate Valdez	Kate_Valdez@Yakama.com*

\*In addition to everyone listed, please contact these Tribes for an inadvertent discovery at Rooster Rock State Park.

Examples of artifacts and archaeological features



Stone flakes (Oregon SHPO)



Obsidian stone tool fragments (Oregon SHPO)



Preserved cordage (Oregon SHPO)



Shell midden (Oregon SHPO)



Historic glass artifacts (Oregon SHPO)



Historic metal artifacts; hole-in-cap cans



Historic building foundations (Oregon SHPO)



Example of camas oven feature (image retrieved from farwestern.com 4.20.21)

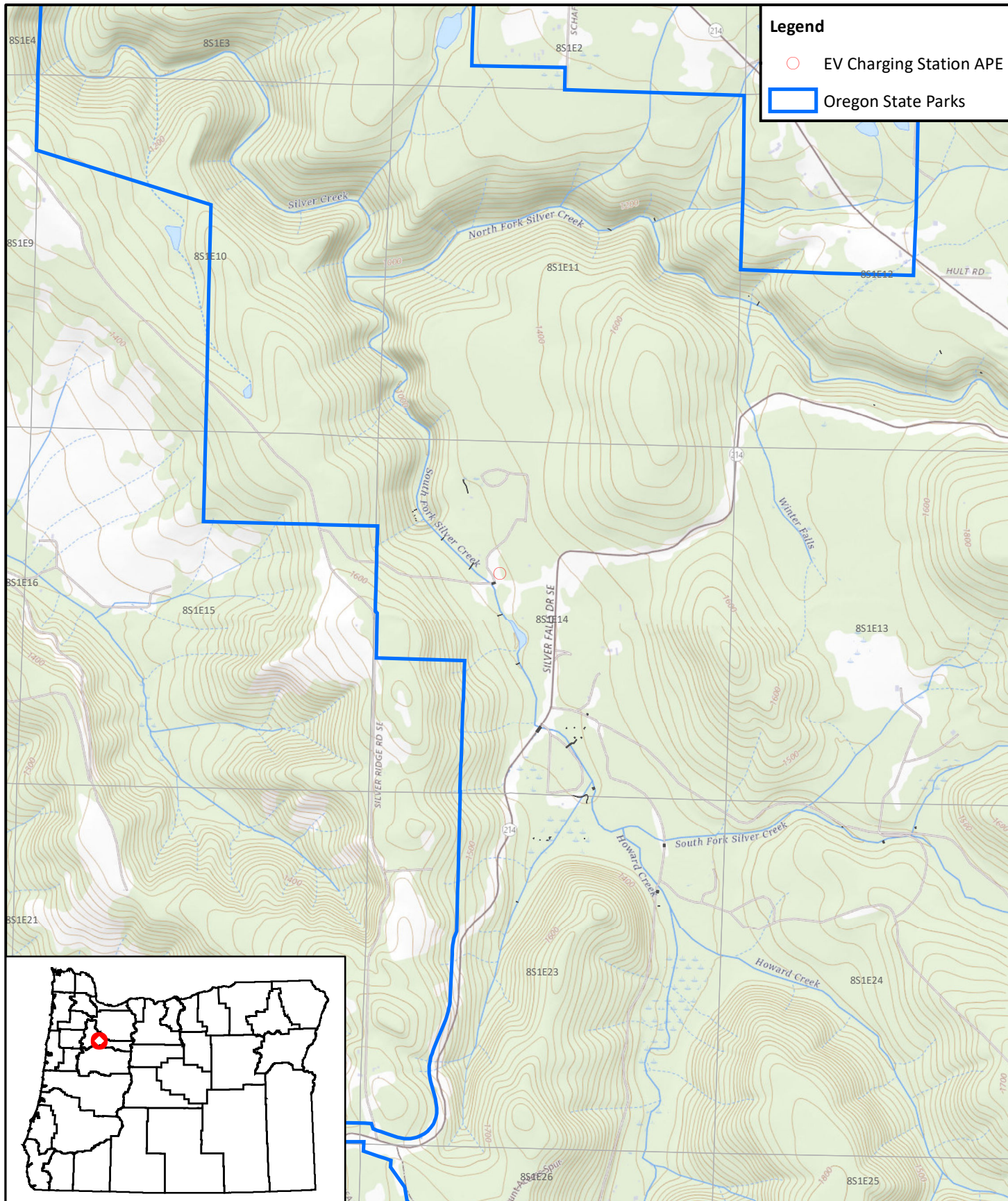


Figure 1.  
Silver Falls State Park  
Electric Vehicle (EV) Charging Station Project  
Area of Potential Effects (APE)  
OPRIS # 36636

