

Corbett School District
Woodard Campus
31520 East Woodard Road,
Troutdale, OR 97060



Project

Consultant

LOWER COLUMBIA ENGINEERING
58640 McNulty Way
St Helens, OR 97051
503-366-0399
lowercolumbiaengr.com

Revisions

No.	Description	Date

Stamp

Issuance

DESIGN REVIEW

Date

09/17/2021

Project Number

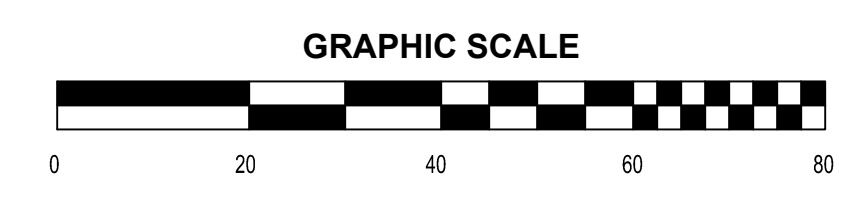
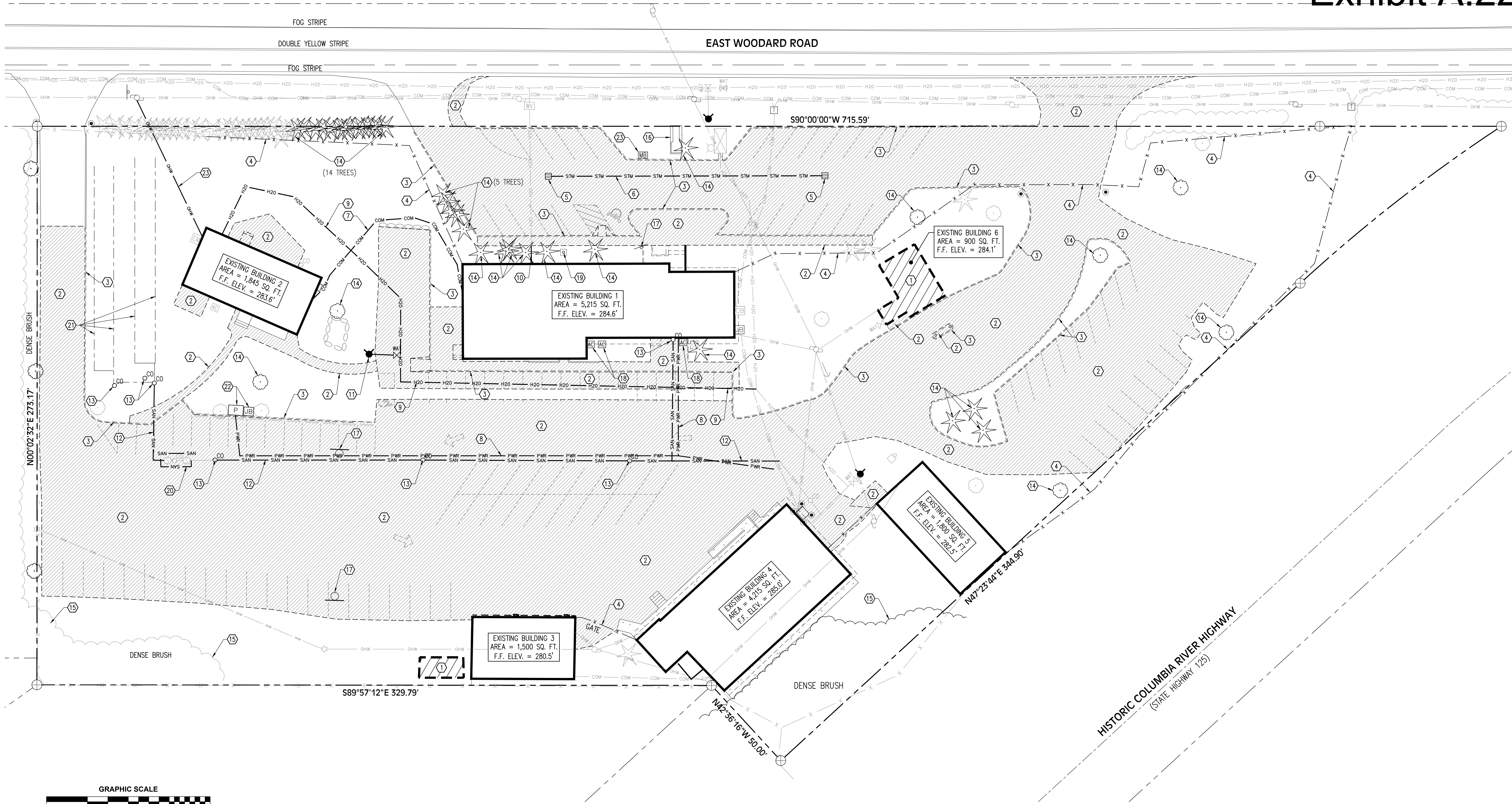
20019

Drawing Title

DEMOLITION PLAN

Sheet No.

C3.01



DEMOLITION PLAN
SCALE: 1" = 20'

DEMOLITION KEYNOTES

- | | | |
|---|--|---|
| <p>① DEMOLISH AND DISPOSE OF EXISTING STRUCTURES AND FOUNDATIONS. REMOVE ALL EXISTING CONSTRUCTION MATERIALS TO A POINT SUITABLE FOR SITE AND/OR NEW STRUCTURE FOUNDATION CONSTRUCTION.</p> <p>② DEMOLISH AND DISPOSE OF EXISTING CONCRETE AND ASPHALT SIDEWALKS, PAVEMENT, GRAVEL PATHS AND SIMILAR SITE FEATURES WITHIN SHADED DEMOLITION ZONES.</p> <p>③ REMOVE AND DISPOSE OF EXISTING CONCRETE CURBS.</p> <p>④ REMOVE AND DISPOSE OF EXISTING CHAIN LINK FENCE, POSTS AND FOOTINGS.</p> <p>⑤ REMOVE AND DISPOSE OF EXISTING STORMWATER CATCH BASIN.</p> <p>⑥ ABANDON EXISTING STORM DRAIN PIPE. REMOVE LINES IN CONFLICT WITH NEW CONSTRUCTION. WHERE REMOVAL TERMINATES, PLUG END OF ABANDONED PIPE.</p> <p>⑦ REMOVE AND DISPOSE OF EXISTING COMMUNICATIONS LINE.</p> <p>⑧ REMOVE AND DISPOSE OF EXISTING POWER LINE.</p> <p>⑨ ABANDON EXISTING WATER LINE. REMOVE LINES IN CONFLICT WITH NEW CONSTRUCTION.</p> | <p>⑩ REMOVE AND DISPOSE OF EXISTING WATER LINE.</p> <p>⑪ REMOVE AND DISPOSE OF EXISTING HYDRANT.</p> <p>⑫ ABANDON EXISTING SANITARY SEWER LINE. REMOVE PORTIONS OF LINE IN CONFLICT WITH NEW CONSTRUCTION. WHERE REMOVAL TERMINATES, PLUG END OF ABANDONED PIPE.</p> <p>⑬ REMOVE EXISTING SANITARY OR STORM CLEANOUT.</p> <p>⑭ REMOVE EXISTING TREE(S).</p> <p>⑮ REMOVE EXISTING SHRUBS/BRUSH.</p> <p>⑯ EXISTING CONCRETE/ROCK SIGNAGE BASE TO REMAIN (NEW SIGNAGE TO BE ADDED).</p> <p>⑰ REMOVE AND DISPOSE OF EXISTING SIGN, SIGN POLE AND FOOTING.</p> <p>⑱ REMOVE AND DISPOSE OF EXISTING HVAC UNIT.</p> <p>⑲ REMOVE AND RELOCATE OR REPLACE EXISTING FLAG POLE.</p> | <p>⑳ EXISTING SEPTIC TANK TO BE ABANDONED.</p> <p>㉑ PRESERVE EXISTING DRAINFIELD LATERALS FOR USE WITH NEW SEPTIC SYSTEM.</p> <p>㉒ COORDINATE REMOVAL OF EXISTING ELECTRICAL PANELS WITH PGE.</p> <p>㉓ REMOVE EXISTING OVERHEAD POWER LINE.</p> <p>㉔ REMOVE AND DISPOSE OF EXISTING MAIL BOX.</p> |
|---|--|---|

LEGEND

<p>EOG EDGE OF GRAVEL</p> <p>EOP EDGE OF PAVEMENT</p> <p>ECC EDGE OF CONCRETE</p> <p>TOP TOP OF PAVEMENT</p> <p>TOC TOP OF CONCRETE</p> <p>T/CURB TOP OF CURB</p> <p>(E) EXISTING</p> <p>(N) NEW</p> <p>CO CLEAN OUT</p> <p>SM STORM SEWER MANHOLE</p> <p>SS SANITARY SEWER MANHOLE</p> <p>FH FIRE HYDRANT</p> <p>FDC FIRE DEPARTMENT CONNECTION</p> <p>WAT WATER VALVE</p> <p>UTP UTILITY POLE</p> <p>WM WATER METER</p> <p>TR TELCO PEDESTAL/RISER</p>	<p>--- --- SUBJECT PROPERTY LINE</p> <p>- - - - - ADJACENT PROPERTY LINE</p> <p>- X - X - FENCE</p> <p>- X - X - DEMO FENCE</p> <p>- STM - STM - (E) STORM LINE</p> <p>- SAN - SAN - (E) SANITARY SEWER LINE</p> <p>- H2O - H2O - (E) SEPTIC DRAINFIELD LINE</p> <p>- COM - COM - (E) WATER LINE</p> <p>- PWR - PWR - (E) COMMUNICATIONS LINE</p> <p>- OHW - OHW - (E) BURIED POWER LINE</p> <p>- STM - STM - DEMO STORM LINE</p> <p>- SAN - SAN - DEMO SANITARY SEWER LINE</p> <p>- H2O - H2O - DEMO WATER LINE</p> <p>- COM - COM - DEMO COMMUNICATIONS LINE</p> <p>- PWR - PWR - DEMO BURIED POWER LINE</p> <p>- OHW - OHW - DEMO OVERHEAD POWER LINE</p> <p>PAVING TO BE REMOVED</p>
--	--

DATE: 09/17/2021
FILE PATH: C:\PROJECTS\20019\DWG\DEMOLITION PLAN.dwg
COPYRIGHT © 2018