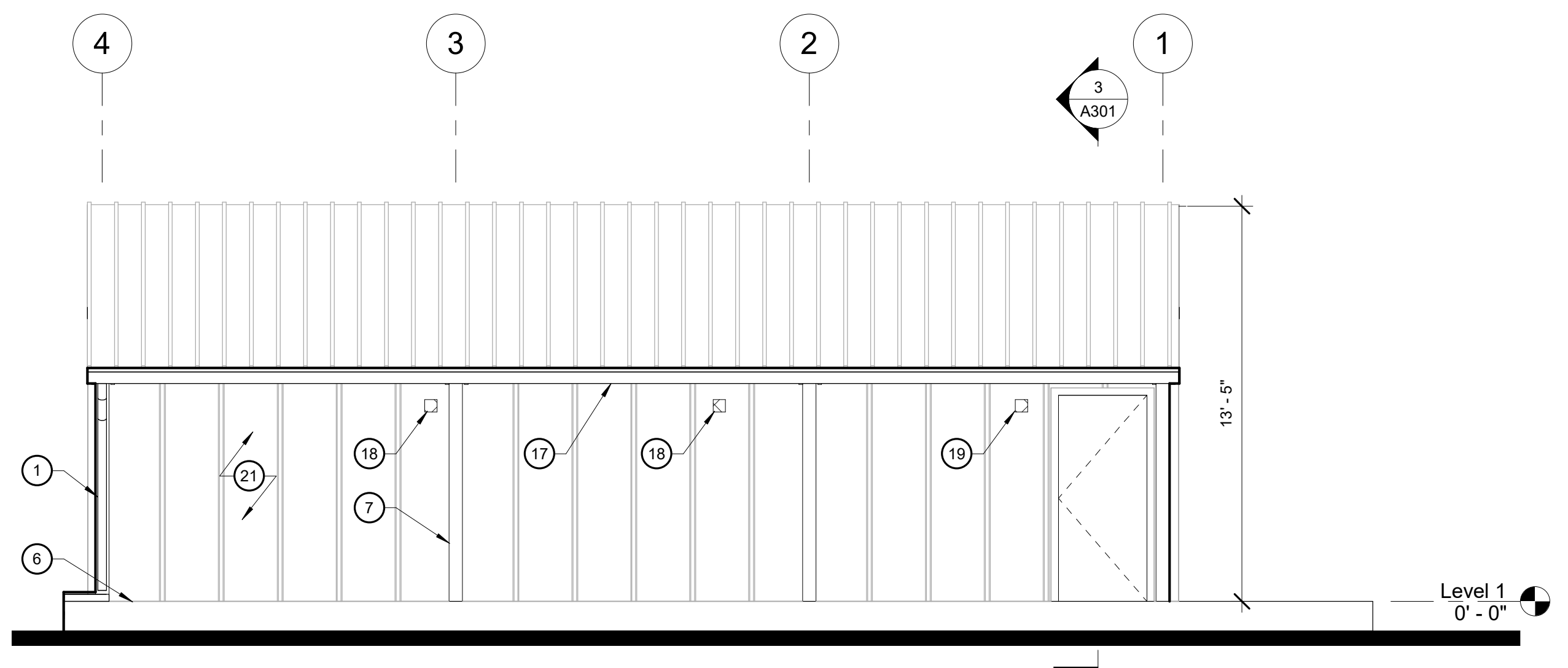
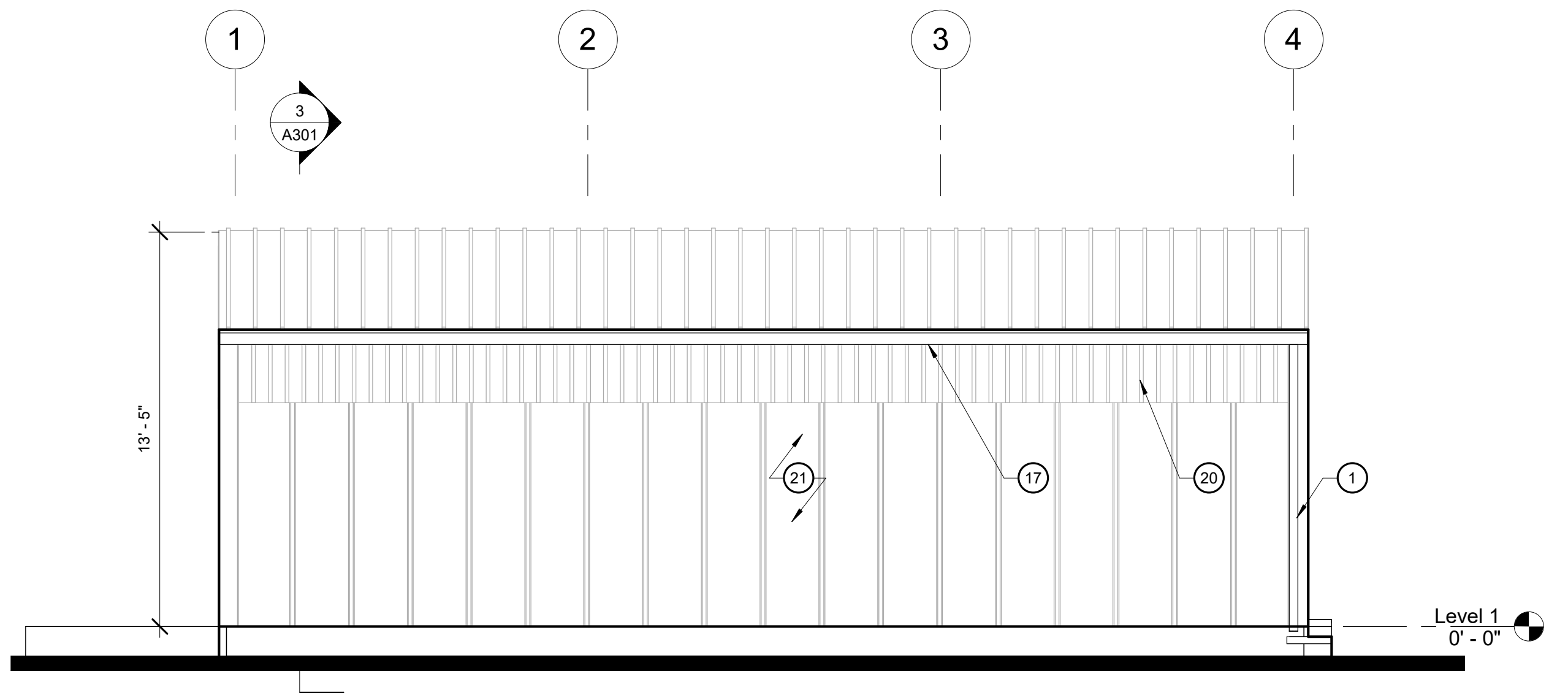


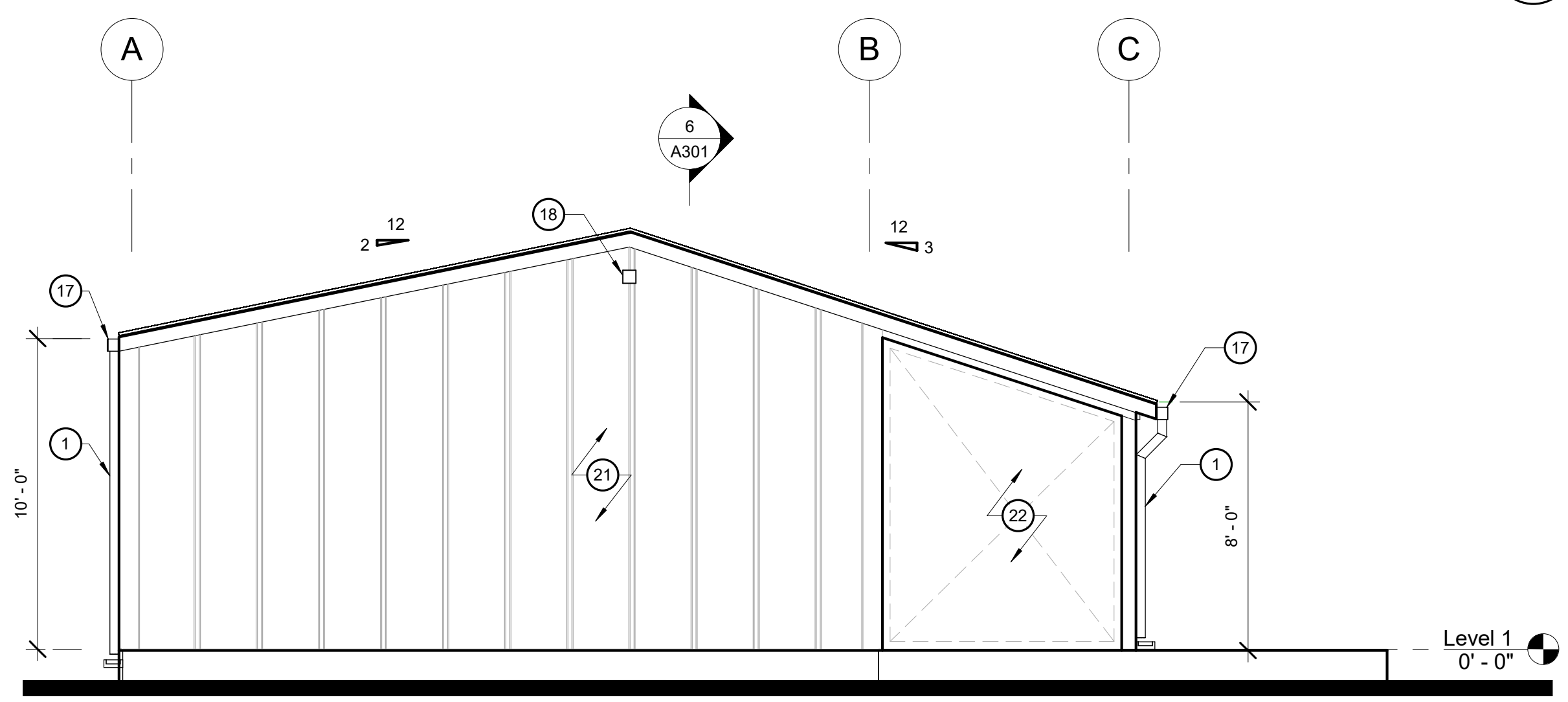
ITEM 3 b. ELEVATIONS OF
EXISTING PUMP/WELL HOUSE



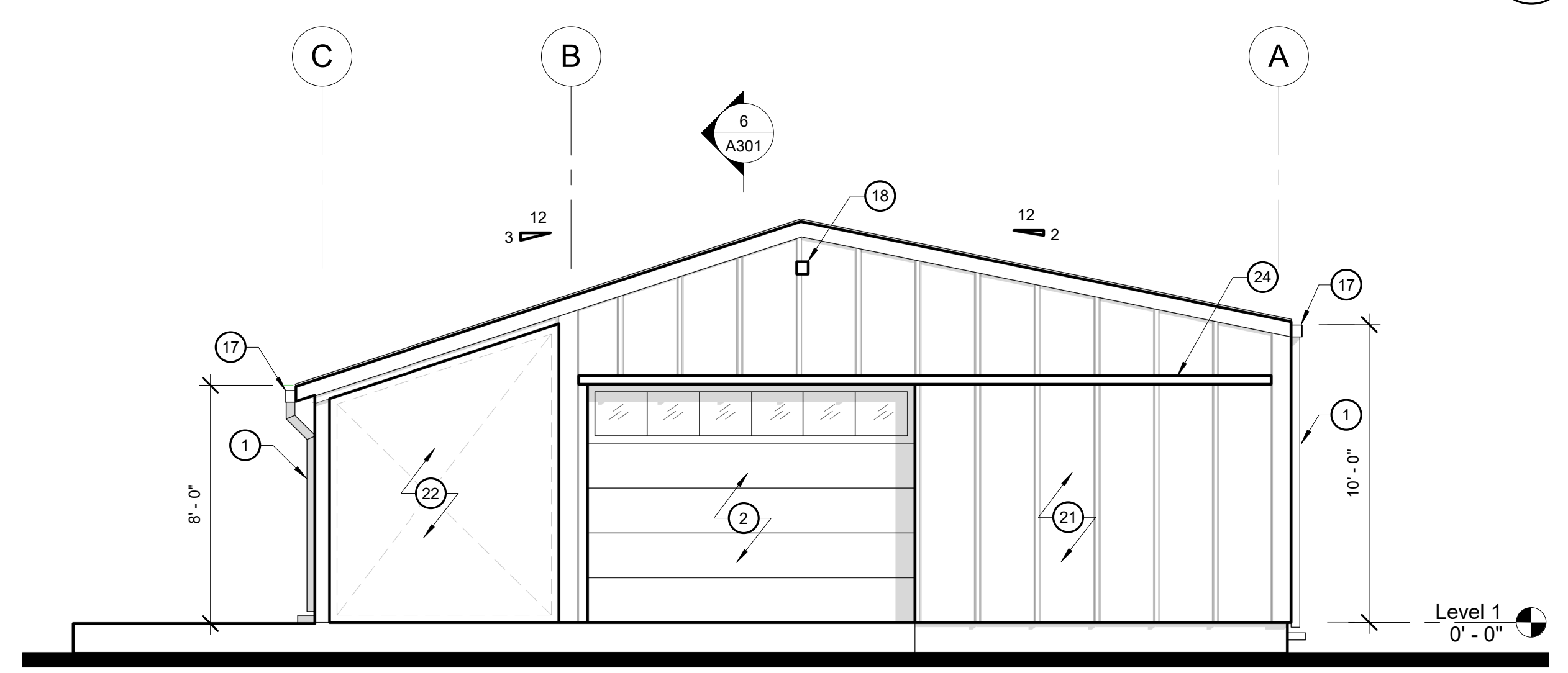
SOUTH ELEVATION 4
1/4" = 1'-0"



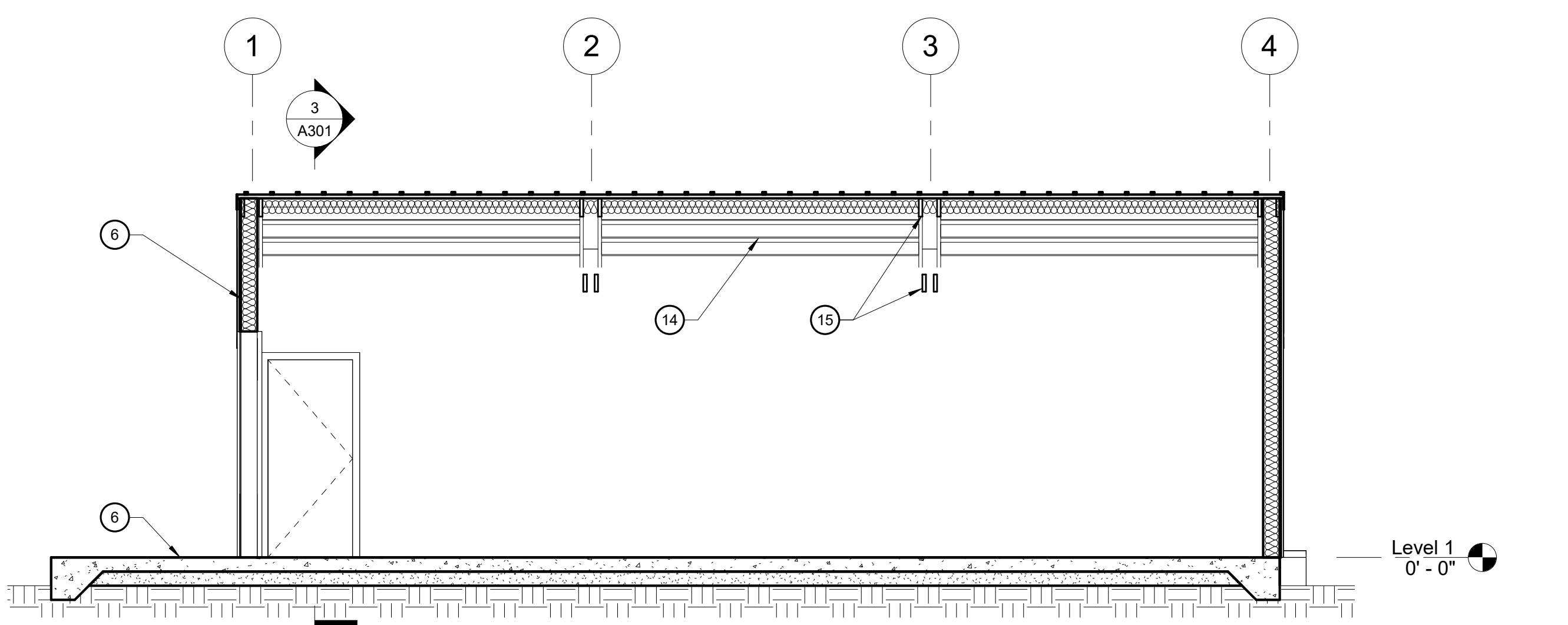
NORTH ELEVATION 1
1/4" = 1'-0"



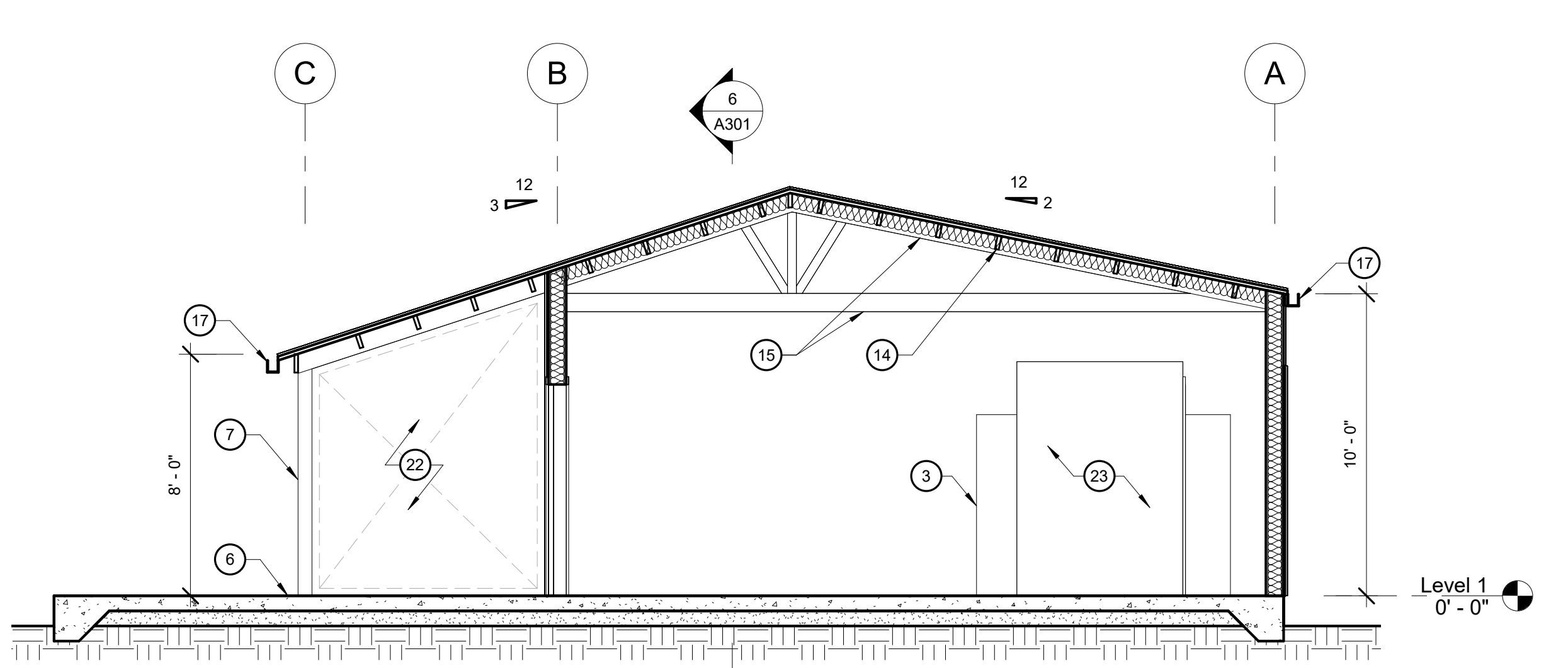
WEST ELEVATION 5
1/4" = 1'-0"



EAST ELEVATION 2
1/4" = 1'-0"



BUILDING SECTION E/W 6
1/4" = 1'-0"



BUILDING SECTION N/S 3
1/4" = 1'-0"

KEYNOTES	
	DESCRIPTION
1	DOWNSPOUT W/ SPLASHBLOCK
2	OVERHEAD DOOR - 8'-0" x 11'-0"
3	ABOVE GROUND WATER STORAGE TANK
4	ABOVE GROUND WATER PRESSURE TANK
5	WELL CASING
6	SLAB ON GRADE - 805 SQ FT IMPERVIOUS OUTDOOR AREA
7	6X6 PRESSURE TREATED WD POST
8	BUILDING OUTLINE ABOVE
9	OPEN SHELVING/TOOL STORAGE
10	SERVICE BAY FOR GROUNDS MAINTAINENCE EQUIPMENT
11	PARKING/STORAGE FOR GROUNDS MAINTAINENCE EQUIPMENT
12	FIREWOOD SPLITTER
13	FIREWOOD STORAGE
14	2X8 WD BEAM @ 11'-6" SPAN, TYP
15	FIELD FABRICATED 2X10 POLE BARN TRUSS, TYP
16	RIDGE
17	SHEET METAL GUTTER
18	MOTION ACTIVATED EXTERIOR FLOOD LIGHT
19	CCTV SECURITY CAMERA
20	TRANSLUCENT CORRUGATED AG PLASTIC SIDING
21	CORRUGATED AG SHEET METAL SIDING (SILVER GALVANIZED)
22	OPEN TO BEYOND
23	WELL CASING ENCLOSURE
24	OVERHEAD DOOR SLIDING TRACK
25	EXISTING ELECTRICAL PANEL - ALL ELECTRICAL WORK UNDER SEPARATE TRADE PERMIT
26	HOSE BIBB

