

52-A
SECTIONAL ZONING MAP

COPY

CASE NO.	ZONING	PC	B.of.C.
CS-37-63	F2-F2CS	Appr.	-
CS 1-68	F2-F2CS	APPR	-
CS 28-69	F2-F2CS	denied	CONT
CI4-75a	F2 to RL-C	10-28-75	12-9-75
(Ordinance #116)			

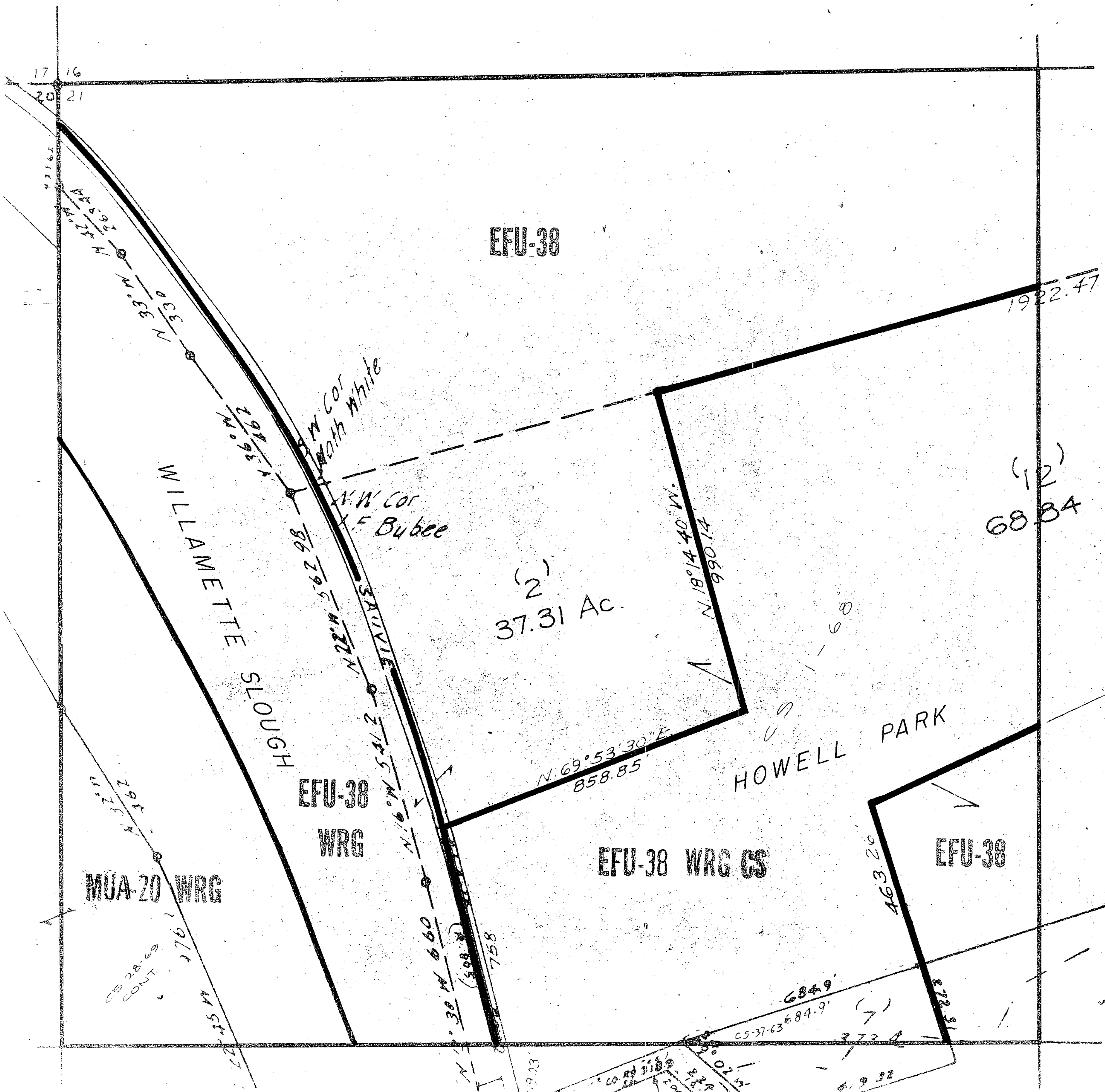


Exhibit B.13

Multnomah County
Planning Commission

1315 JANUARY 1966

N.W. 1/4 SEC. 21-2N-1W
scale 1" = 200'