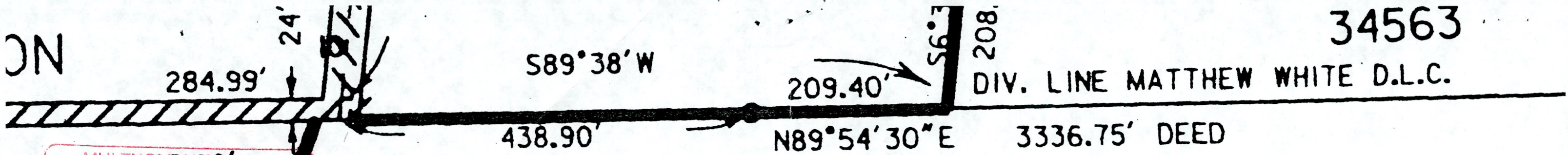


34563

DIV. LINE MATTHEW WHITE D.L.C.

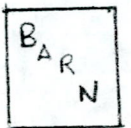
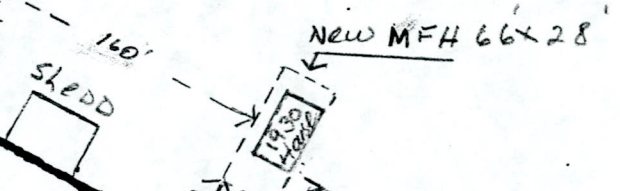
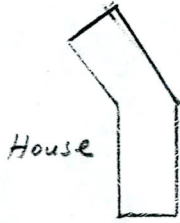
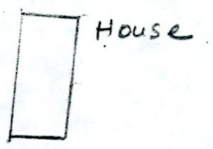
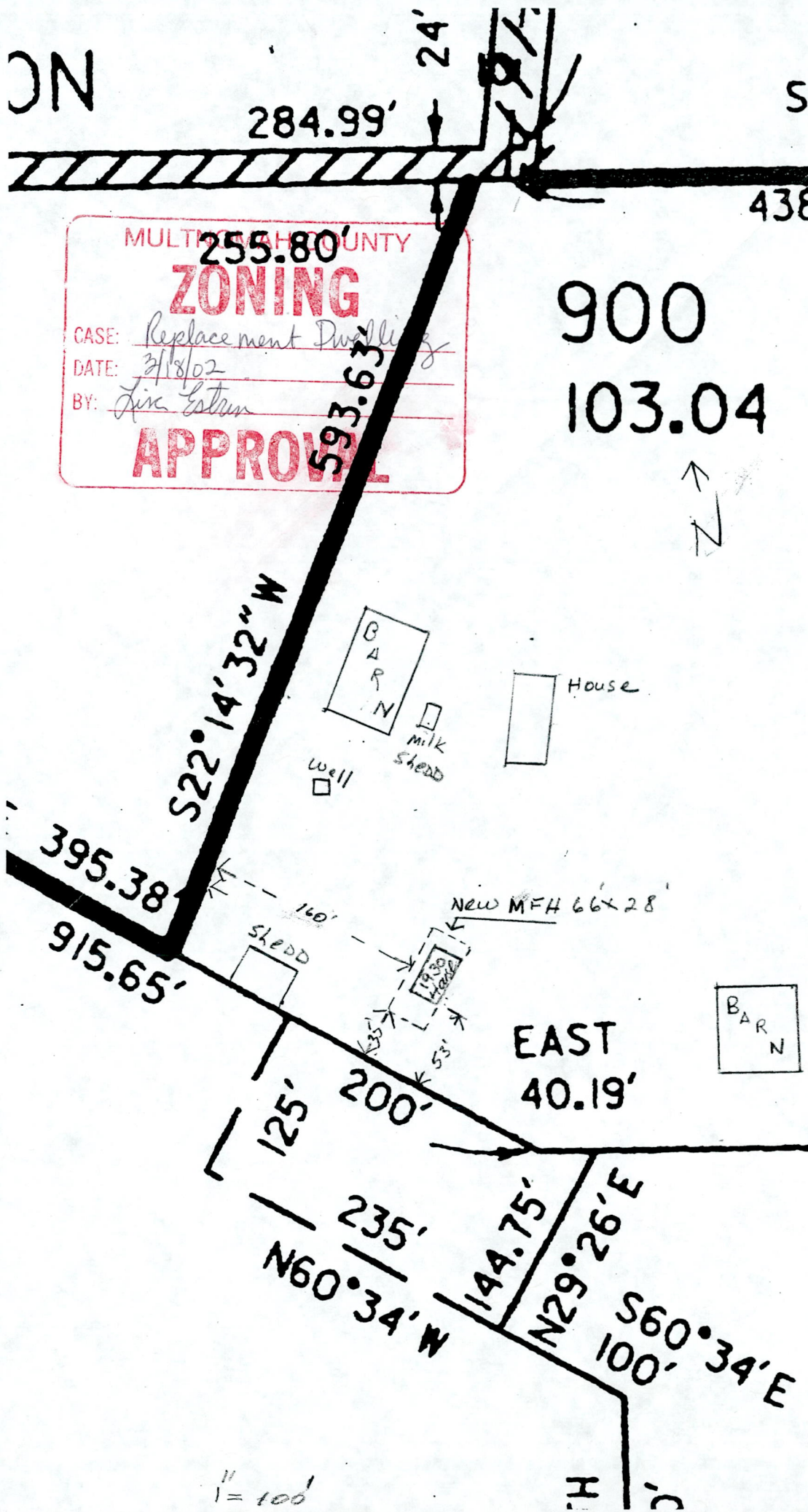
ON



MULTI-COUNTY
ZONING
 CASE: Replacement Dwelling
 DATE: 3/18/02
 BY: Lisa Esten
APPROVAL

900
 103.04 AC.

049

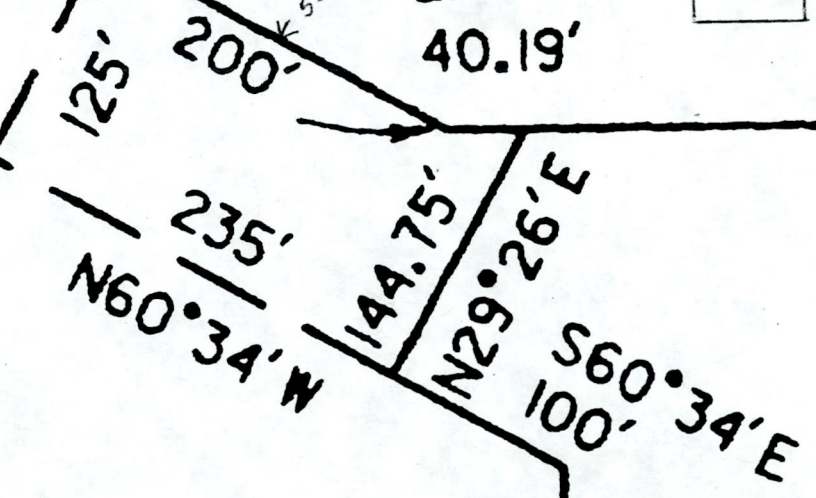


EAST
40.19'

1713.43'

EAST

1673.24'



1/10" = 10'

1" = 100'