



---

## Exhibit for Land Use comments on Oct 4th at 6:30 pm by David Mann

1 message

---

**Dave Mann**

Fri, Oct 1, 2021 at 12:13 PM

To: "lup-hearings@multco.us" <lup-hearings@multco.us>



**External Sender** - Be Suspicious of Attachments, Links, and Requests for Payment or Login Information.

Exhibit for Land Use comments on Oct 4th at 6:30 pm by David Mann

The Subject Property is 205 feet x 80 feet. Mult. Co. Tax ID#R341475

The 10 foot setback from the East Columbia River Hwy. would condemn this lot.



**Sandy River Plat Map Color.jpg**  
432K



---

## David Mann's additional Exhibit to the Oct 4th LUP meeting at 6:30pm

1 message

---

**Dave Mann**

Mon, Oct 4, 2021 at 10:24 AM

To: LUP Hearings <lup-hearings@multco.us>

Cc:



**External Sender** - Be Suspicious of Attachments, Links, and Requests for Payment or Login Information.

Dear Heidi,

Could you please add these photographs to my comments at tonight's meeting? I've spoken with Adam Barber about this at 9:30 AM this morning. These reference changes to the "buffer zone" § 38.7053.

Thank you very much,  
David Mann

cc. Adam Barber

---

### 5 attachments



**20210929\_165705.jpg**  
4083K



**20210929\_165921.jpg**  
3729K



**20210929\_165747.jpg**  
4463K

**20210929\_165957.jpg**  
3368K

205' x 80'  
Subject Lot

700  
0.50 AC. UPLAND  
0.00 AC. LOWLAND  
SEE CS 24310

800  
1.47 AC. UPLAND  
7.56 AC. LOWLAND

TIPPY CANOE

SEE CS 15206  
32829

COR. OF PROPERTY  
DESC. IN 1955-  
1716-362  
NE COR  
1953-1620-B

1200  
0.96 AC. SEE CS  
26947  
46361

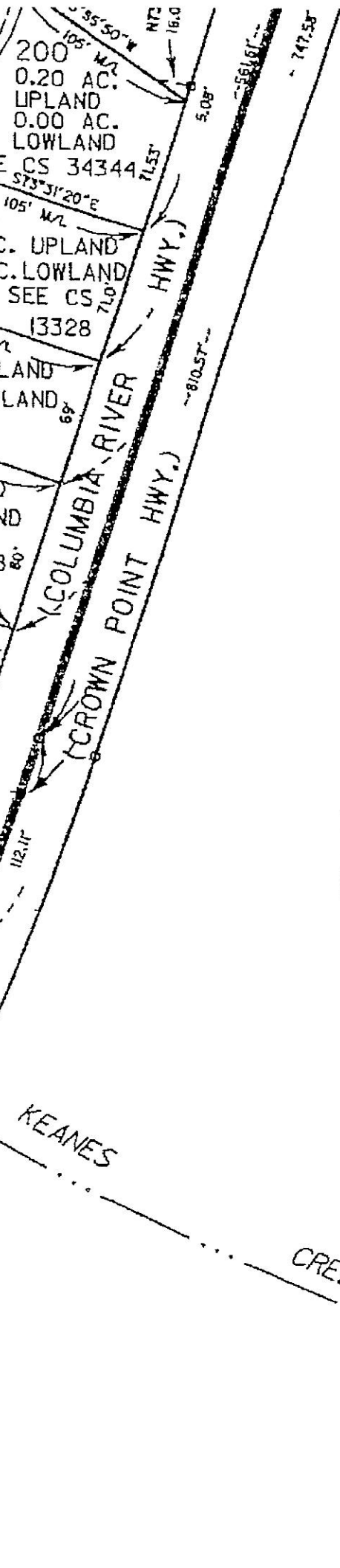
200  
0.20 AC. UPLAND  
0.00 AC. LOWLAND  
SEE CS 34344

300  
0.19 AC. UPLAND  
0.00 AC. LOWLAND  
SEE CS 13328

400  
0.19 AC. UPLAND  
0.00 AC. LOWLAND

500  
0.28 AC. UPLAND  
0.00 AC. LOWLAND  
SEE CS 25858

600  
0.40 AC. UPLAND  
0.00 AC. LOWLAND  
SEE CS 44981



LAND  
WLAND

3

SEE MAP IS AT CP

CREEK

KEANES

STORIC

S/L NORTH 60 AC.  
OF NW 1/4 SEC. 6  
365' CALC. -306.6'-  
365.24' SUR.

91.01'

200.0'

130.3'

88.28'

221.8'

362.82'

514.86'

517.13'

103.5'

537.04 40'' W

148.19'

516' 28' 40'' W

50.24'

29.15'

89.10'

80'

112.11'

80'

112.11'

80'

112.11'

80'

112.11'

80'

112.11'

80'

112.11'

80'

112.11'

80'

112.11'

80'

112.11'

80'

112.11'

80'

112.11'

80'

112.11'

80'

112.11'

80'

112.11'

80'

112.11'

80'

112.11'

80'

112.11'

80'

112.11'

80'

112.11'

80'

112.11'

80'

112.11'

80'

112.11'

80'

112.11'

80'

112.11'

80'

112.11'

80'

112.11'

80'

112.11'

80'

112.11'

80'

112.11'

80'

112.11'

80'

112.11'

80'

112.11'

80'

112.11'

80'

112.11'

80'

112.11'

80'

112.11'

80'

112.11'

80'

112.11'

80'

112.11'

80'

112.11'

80'

112.11'

80'

112.11'

80'

112.11'

80'

112.11'

80'

112.11'

80'

112.11'

80'

112.11'

80'

112.11'

80'

112.11'

80'

112.11'

80'

112.11'

80'

112.11'

80'

112.11'

80'

112.11'

80'

112.11'

80'

112.11'

80'

112.11'

80'

112.11'

80'

112.11'

80'

112.11'

80'

112.11'

80'

112.11'

80'

112.11'

80'

112.11'

80'

112.11'

80'

112.11'

80'

112.11'

80'

112.11'

80'

112.11'

80'

112.11'

80'

112.11'

80'

112.11'

80'

112.11'

80'

112.11'

80'

112.11'

80'

112.11'

80'

112.11'

80'

112.11'

80'

112.11'

80'

112.11'

80'

112.11'

80'

112.11'

80'

112.11'

80'

112.11'

80'

112.11'

80'

112.11'

80'

112.11'

80'

112.11'

80'

112.11'

80'

112.11'

80'

112.11'

80'

112.11'

80'

112.11'

80'

112.11'

80'

112.11'

80'

112.11'

80'

112.11'

80'

112.11'

80'

112.11'

80'

112.11'

80'

112.11'

80'

112.11'

80'

112.11'

80'

112.11'

80'

112.11'

80'

112.11'

80'

112.11'

80'

112.11'

80'

112.11'

80'

112.11'

80'

112.11'

80'

112.11'

80'

112.11'

80'

112.11'

80'

112.11'

80'

112.11'

80'

112.11'

80'

112.11'

80'

112.11'

80'

112.11'

80'

112.11'

80'

112.11'

80'

112.11'

80'

112.11'

80'

112.11'

80'

112.11'

80'

112.11'

80'

112.11'

80'

112.11'

80'

112.11'

80'

112.11'

80'

112.11'

80'

112.11'

80'

112.11'

