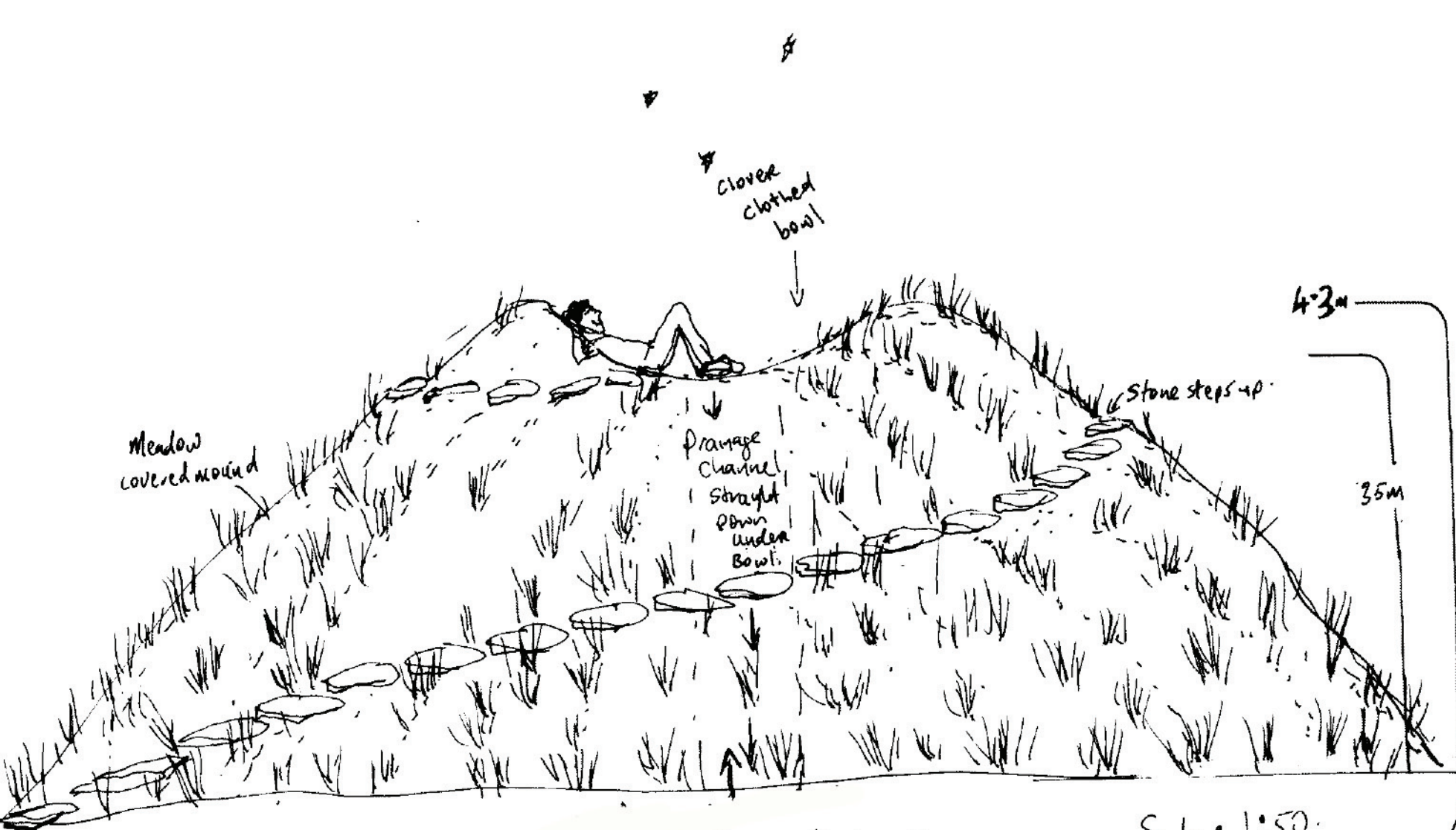


- Beds (A) Blueberry + picking berry beds**
 A mixture of:
- *Vaccinium ovalifolium* - oval leaf blueberry (1x1m)
 - *Vaccinium membranaceum* - mountain huckleberry (1x1m)
- The trees at centre of labyrinth.
- 3x *Amelanchier alabotria* - western serviceberry (small tree)

- Bed (B) Strawberry beds**
- *Fragaria vesca* - wild strawberry
 - *Fragaria virginiana 'platyphala'* - 'Broadpetal strawberry'
 - Clover mixture (for nitrogen - native varieties)
 - *Festuca roemerii* (small tufted grass - native)
- (Mix up evenly)

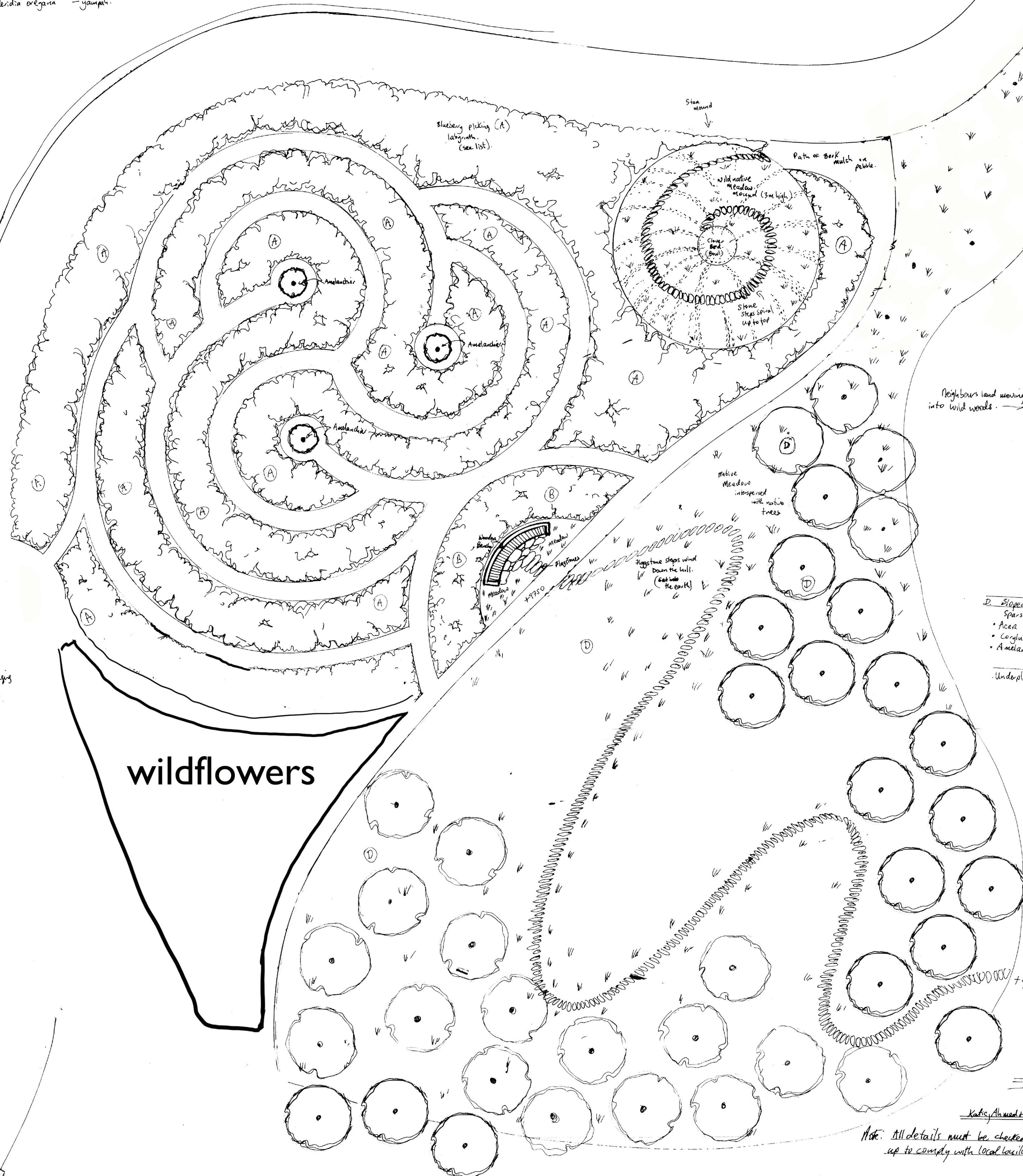
Underplanted with a mix of following or/soil as seeded with native meadow seed.

- *Tritolium wormskoldii* (spreading clover)
- *Lupinus rivularis* + *Lupinus polytypus* - both nitrogen fixer (important for fruit)
- *Perideridia oregona* - yampah



Meadow step mounding

- Top bowl seeded or planted with native clovers such as *Tritolium wormskoldii* (spreading springbank clover)
- Sides - native meadow seed. (www.heritageseedlings.com)



- (C) Boundary Orchard + meadow:**
 Plant a mixture of:
- *Corylus cornuta* - California hazelnut
 - *Sambucus canadensis* - elder
 - *Amelanchier alabotria* - Saskatoon
 - *Acer circinatum* - vine maple
- Underplant trees with a native wild meadow from www.heritageseedlings.com
- Just not trees available from www.nativefoodnursery.com

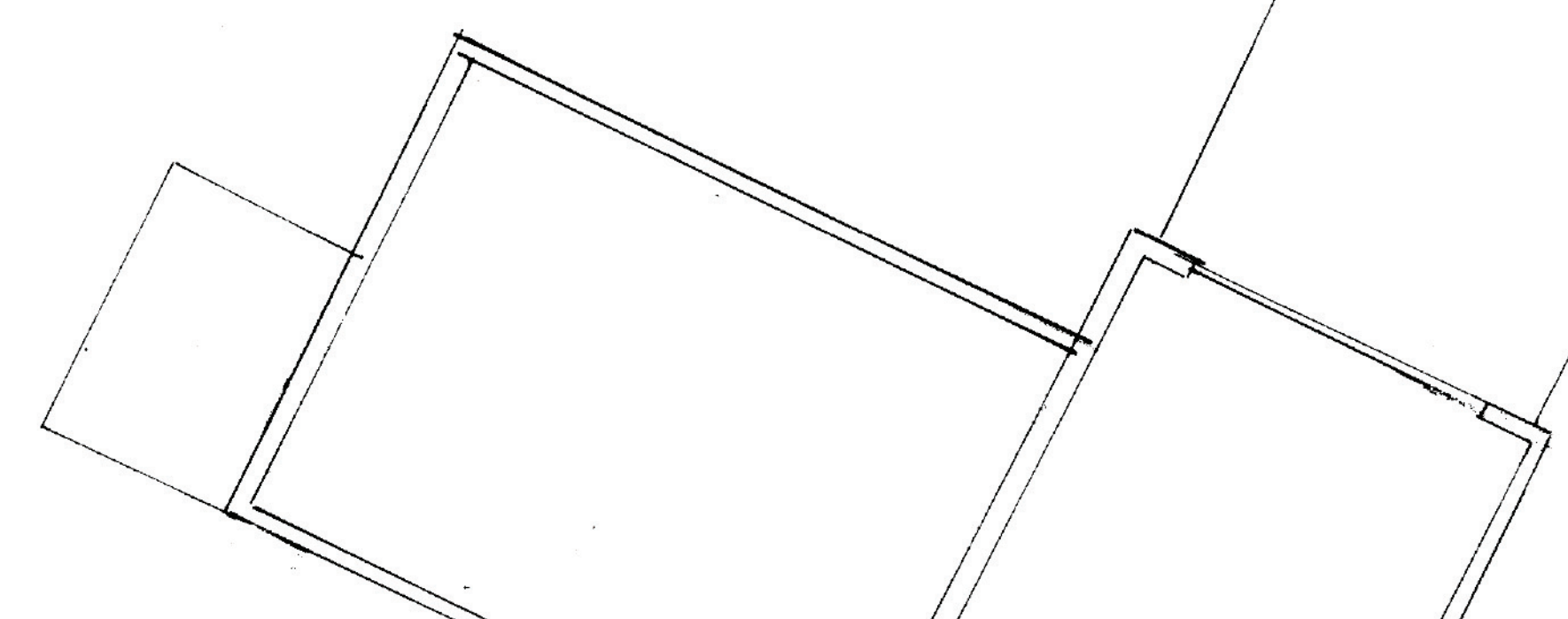
- (B) Shrubbery behind seating / lawn print:**
 Mix of:
- *Ceanothus thyrsiflorus* 'Blueblossom'
 - *Rosa nutkana* - Nocturna rose
 - *Rosa gymnocarpa* - Baldhip rose
 - *Ribes sanguineum* - Red currant

D. Sloped wild lands heading closer to woods:
 Sparsely planted (so do not see clock view)

- *Acer circinatum* - vine maple
- *Corylus cornuta* - hazelnut
- *Amelanchier alabotria* - Saskatoon serviceberry

Underplanted with existing wild grasslands or scrub

- Best Plan of Action going forward**
- Step 1: Get a contractor to remove existing sward of grass, prepare it for seeding or sow native clover sward all over land.
 - Step 2: When the clover is established, get surveyor to mark out Design on the land. Use sticks to mark path edges.
 - Step 3: Use bark mulch or loggin to form paths. Surfaces. Use stones to make edges to paths. If needed. You may not need them.
 - Step 4: Plant trees + shrubs + berries through the established clover sward in marked out beds.
 - Step 5: When foundations being dug out for house, use coil to build stonewall mound. Use contractor to make French drain in centre of mound.



Concept Masterplan
 Scale 1:100 (w)

Kate, Alameda family, Portland, Oregon, 2021

Note: All details must be checked + construction details drawn up to comply with local building regulations.

W. J. [Signature] April 2021