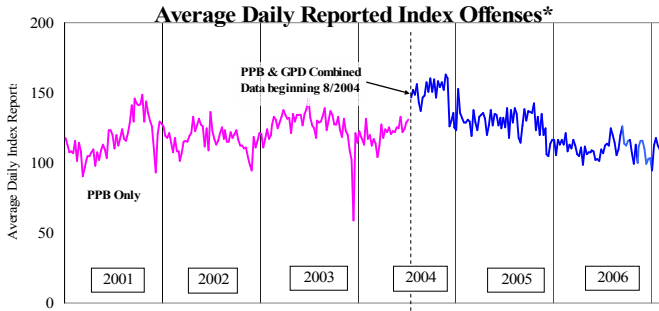


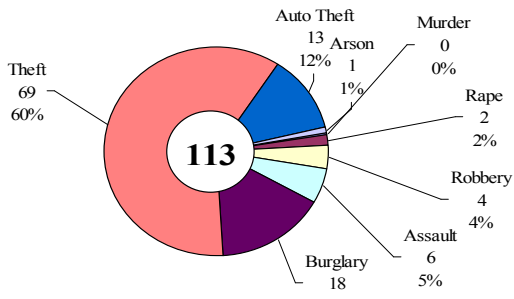
SAFETY PRIORITY BRIEF: FEBRUARY 2007

Multnomah County: Reported Index Offenses



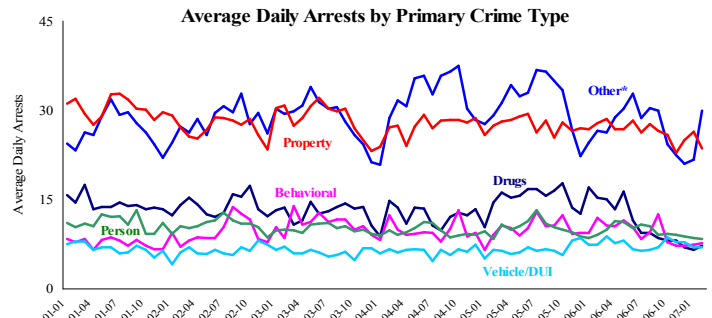
*The graph reflects the combined weekly index offenses data from Portland Police Bureau (PPB) and Gresham Police Dept (GPD), beginning 8/2004 (line in blue). According to LEADS (2005) data PPB and GPD account for 95% of all offenses county-wide. Index offenses account for about half of all reported offenses.

Average Daily Reported Index Offenses*



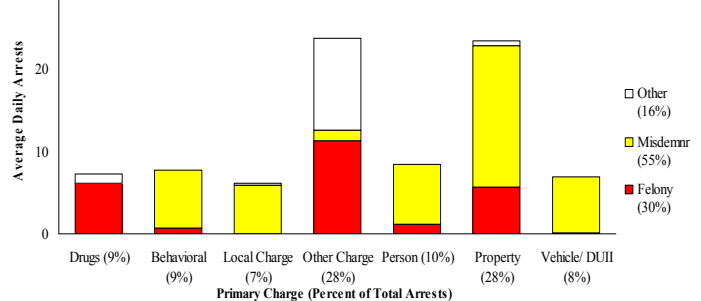
*Portland and Gresham, combined 4-week moving average for the week ending 2-17-07.

Multnomah County: Portland Arrests



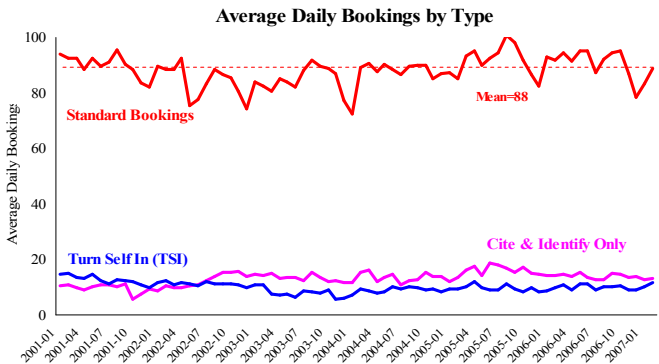
*Other largely reflects fugitive/warrant charges and local ordinances (DFZ/PFZ). PPB data only, downloaded 3-16-2007.

Average Daily Arrests*: February (n=84)



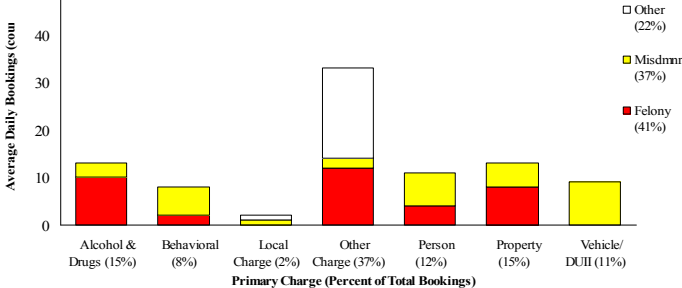
*There were 2,348 arrests in February. Local Charges include drug-free and prostitution free zone violations.

Sheriff: Bookings



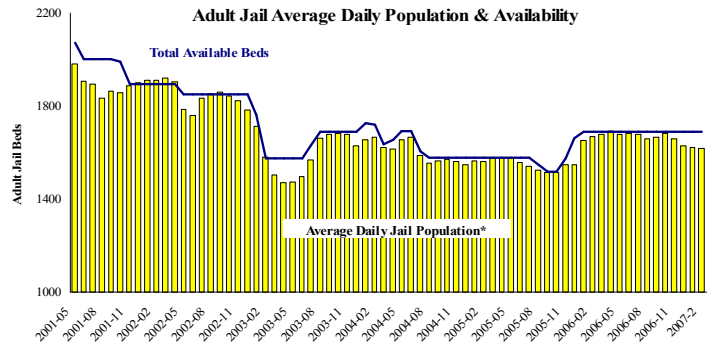
*In-transit bookings are not reported herein and account for ~4% of all bookings. February's average length of stay (ALS) per booking was 18.89 days.

Average Daily Bookings by Severity*: February (n=104)



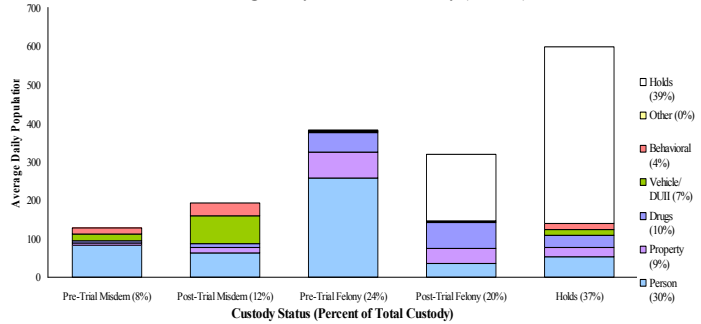
*Excludes Cite & ID. Total of 2897 bookings (103.5/day) through 2/28/07. Corrections Health reported psych-alerts (17.8/day) for the entire month of February.

Sheriff: Custody- Adult Jail Beds



*Excludes in-transit custody classifications. The MCSO reported 0 matrix releases for February 2007 (0/day).

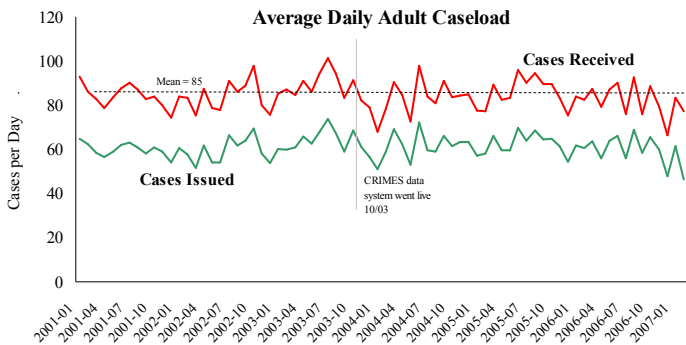
Average Daily Bed Use: February (n=1618)



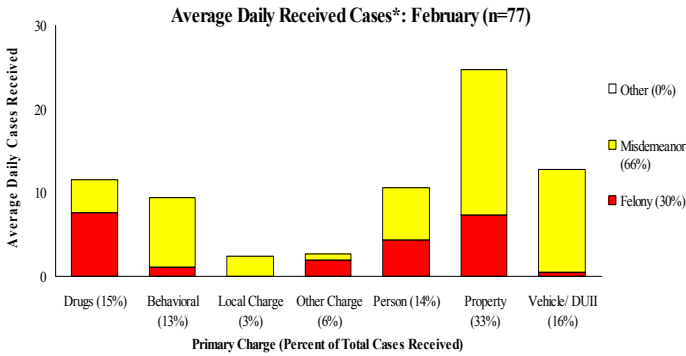
Average Daily Jail System Capacity=1690. Average Daily Population (ADP)=1618; there were 72 available beds on any given day.

Notes: The average length of stay per booking (ALS) dropped from January's 19.39 days to 18.89 days in February. However, February 2007 ALS is about a day longer than the same month of last year, which was 17.79. The MCSO reported 0 matrix releases in February. Total emergency population releases have continued to significantly decrease since October of 2006.

District Attorney: Adult Caseload

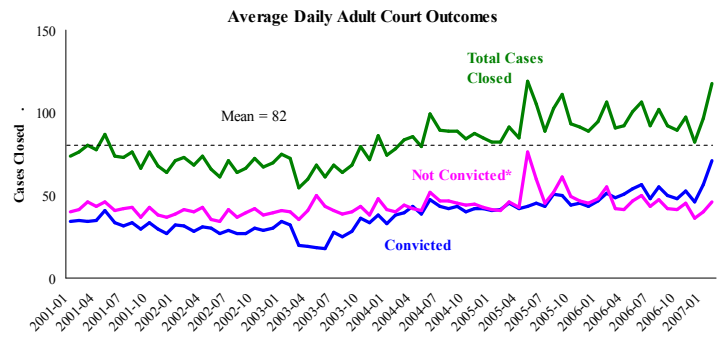


*Data retrieved 3/21/2007 Note: Many recently received cases are pending review.



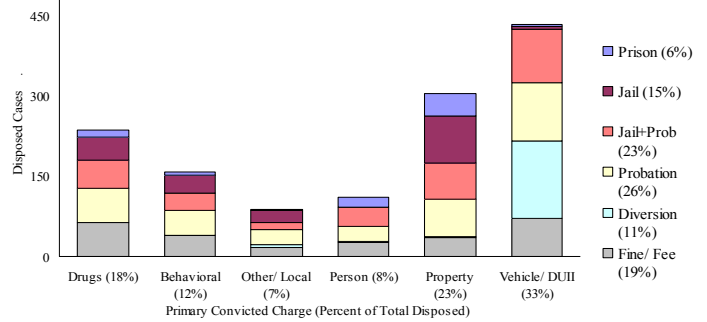
*February had 2159 received cases as of 3-16-2007 (77day). Of those, 184 cases were pending review.

Court Processes: Sentencing Outcomes



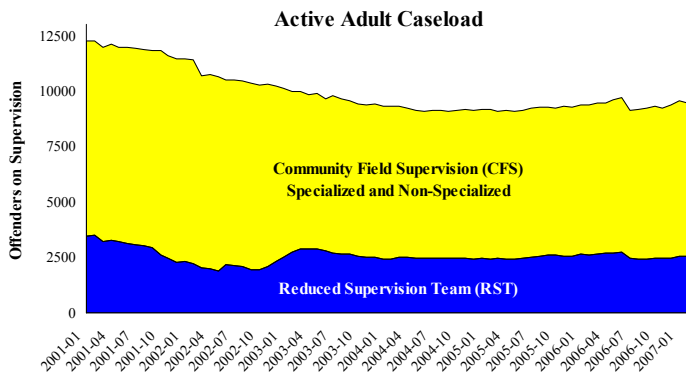
*Includes dismissed cases (typically 'no complainant') and cases found not guilty. Adult felony and misdemeanor cases only.

Disposition Type by Primary Conviction*: February 2007

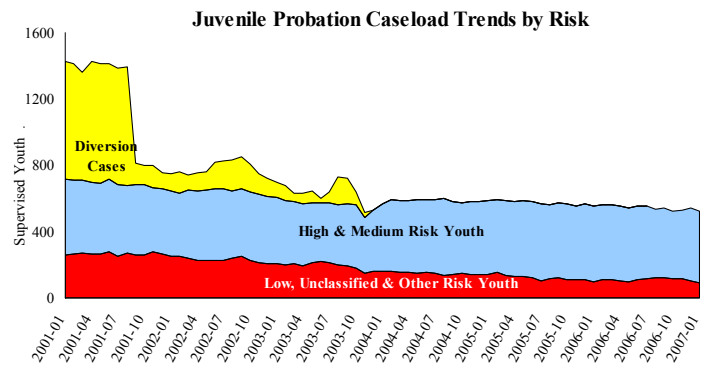


*Sentenced adult felony and misdemeanors primary convictions only. Primary conviction charge is the most serious charge with a conviction and may differ from the original primary charge. February had 1,994 convictions; 25% were felonies.

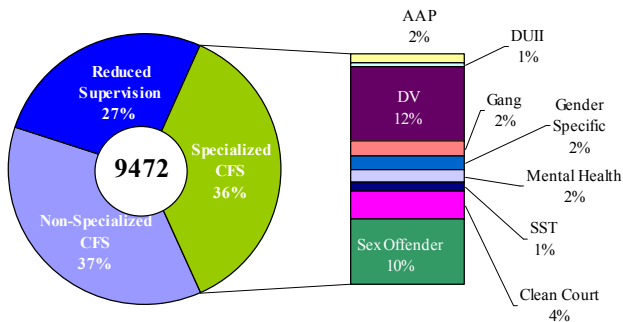
Adult Community Supervision: Caseloads



Juvenile Community Supervision: Caseloads

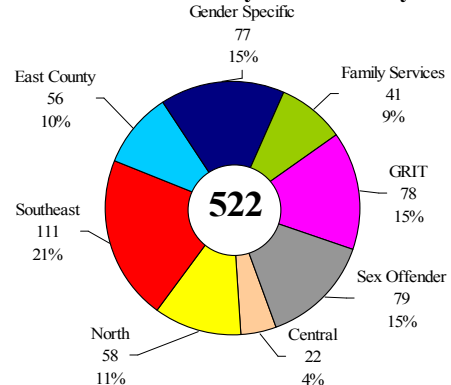


Adult Active Caseload by Type*: February 2007



*Less than 1% are "other" cases which have been included as non-specialized.

Juvenile Justice Caseload by Unit*: January 2007



*The average caseload per counselor was 22.1 cases for January.

Notes: The Adult community supervision caseloads continued to decrease by 8% in February. The largest decrease was in the Sex Offender category by 3.3%. DCJ's juvenile *High-Medium Risk* caseloads have continued to increase.