




Office of Sustainability FY 2022 Proposed Budget

Presented to the
Board of Multnomah County Commissioners

 **John Wasiutynski**
Director, Office of Sustainability

May 4, 2021

multco.us/budget

AGENDA



EQUITY



CURRENT SUCCESSES



FY22 BUDGET & HIGHLIGHTS



MISSION, VISION, VALUES

Guiding our work is the belief that the best solution to environmental problems is to **eradicate the root causes of injustice** in our community, that our entire community thrives when we **meet the needs of the most vulnerable**, and that **community-driven** solutions are more effective and long-lasting.



Collaborate with
community partners



Lead and support
sustainability efforts



Work with
County leadership



CLIMATE ACTION PLAN



- Carbon emissions are 19% below 1990 levels, but transportation emissions are rising, and progress has stalled.
- Impacts of the climate crisis are already here, we need bold action to protect communities and to more quickly ramp down emissions.



CLIMATE JUSTICE INITIATIVE

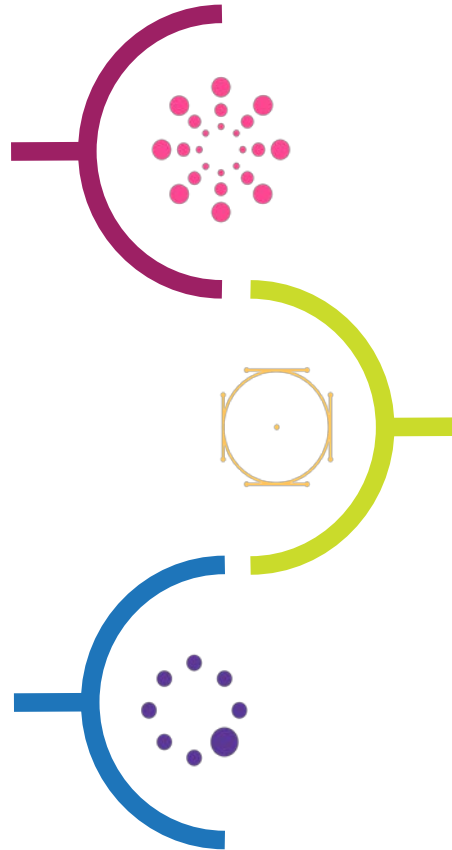


- Co-create with community a vision of climate justice and actions that will move our community toward those goals.
- Strong collaboration with the City of Portland, while also supporting climate planning efforts in Gresham.



CLIMATE JUSTICE INITIATIVE

Currently
Community-based
Workshops



Phase 1: Spring 2021
Collaborate
Climate Justice x Design
Lab Inaugural Cohort

Phase 2: Fall 2021
Co-Design
Climate Justice x Design Lab
Second Cohort



UTILITY ADVOCACY

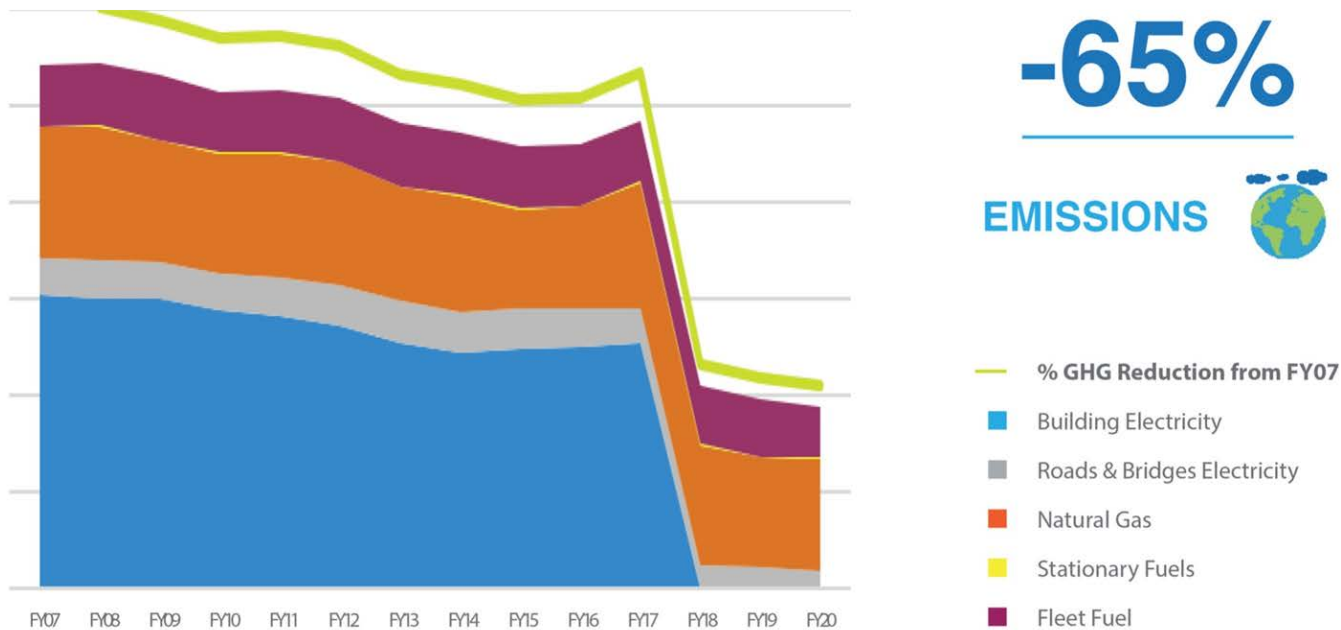


- 24% of Multnomah County households are energy burdened.
- Electricity remains the single largest source of carbon emissions.

MULTCO OPERATIONS EMISSIONS

REDUCTION

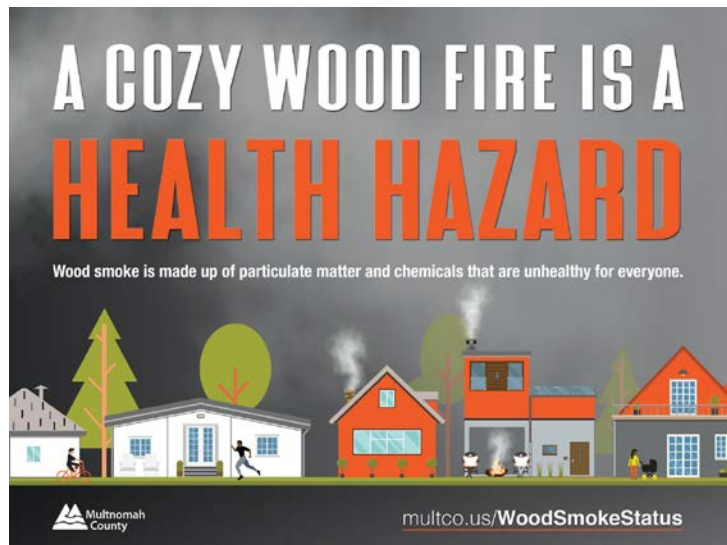
Goal: By 2030, reduce greenhouse gas emissions from County operations by 53% from FY07 levels.



- Fossil gas and transportation fuels are the leading sources of carbon emissions.
- MultCo was the first jurisdiction in Oregon to restrict fossil fuels in new and remodeled buildings.



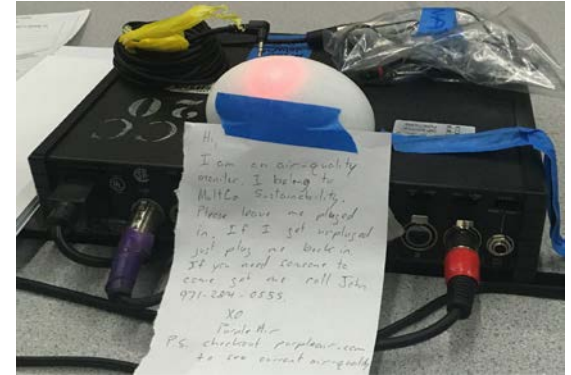
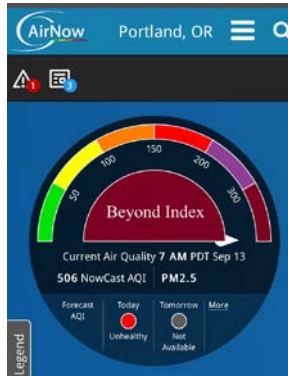
AIR QUALITY



- To address these sources MultCo Sustainability pursues a three prong strategy: educate, regulate, incentivise.
- Fine Particulate Matter and other co-pollutants from diesel engines and wood smoke are the biggest air quality threat to our community.



WILDFIRE SMOKE RESPONSE



- The climate crisis is leading to worsening air quality across the western United States.
- Wildfire smoke intrusions are here to stay because of hotter, drier summers, and warmer winters.



GREEN GRESHAM / HEALTHY GRESHAM



- Over the past three years we have planted 339 trees in West Gresham, and employed 15 young people.
- EMSWCD has committed to another year of funding and exploring sustained funding for urban forestry.



EMPLOYEE & COMMUNITY ENGAGEMENT



- Earth Month, Bike Month, EcoChallenge
- Climate Leadership Now Quarterly Newsletter
- Community Partnerships
- Advisory Committee on Sustainability & Innovation (ACSI)



COVID-19

Living in the time of COVID-19

OPEN with CARE

WE KEEP YOU SAFER BY:

- Limiting the number of customers in the store, so we can keep at least 6 feet of distance between people
- Asking employees and customers who are sick to stay home
- Cleaning and sanitizing high-touch surfaces often
- Requiring employees to wear face coverings and asking customers to do the same

*We provide exemptions from the mask face covering requirement for employees who cannot wear them under applicable federal disabilities laws.

These actions are required by the State of Oregon and are in place to protect our employees and our customers.

multico.us/covid19

Living in the time of COVID-19

OUTDOOR DINING

Required:

Three weeks (75%) are open as well as using an awning or roof.

Above and beyond:

All four weeks (100%) are open for maximum air flow.

These considerations are required by the State of Oregon and are in place to protect employees and our customers.

In effect as of 12/29/2020

multico.us/covid19

PLEASE PAUSE

To slow the surge of COVID, for the next two weeks:

- Stay home if you can.
- Always wear a mask, wash hands, and stay six feet apart.
- Check your symptoms at c1bergen.com.
- If you must meet, keep it small (six people or less).

East County Business Reopening Roundtable

Thursday, May 14, 2020 From 2:30 - 3:30 pm

Register and Join via [WebEx: bit.ly/EastCountyReopeningRoundtable](https://www.eventbrite.com/e/east-county-business-reopening-roundtable-tickets-72444444444)

Join Multnomah County Chair Deborah Kafoury, and Commissioners Lori Stegmann of District 4 to learn more about Multnomah County's efforts towards Phase 1 business reopening. Public Health Director Rachael Banks will provide a presentation on the current state of Multnomah County's progress, and will be seeking feedback from business owners and employees.

We hope that you can join us.

Questions about this event? Email small.business.covid@multico.us

Phase One

Physical Distancing, Occupancy and Seating Rules for Restaurants & Food Carts

- Remove or restrict seating to facilitate at least six feet of physical distance between people not in the same party.
- If booth seating is back to back, only use every other booth.
- Placemat and temporary partitions are not allowed to meet the six-foot requirement.
- Limit parties to 10 people or fewer.
- Do not combine parties/groups in shared seating who have not chosen to congregate together.
- People in the same party seated at the same table do not have to be six feet apart.

Read the full guidance: tinyurl.com/dn9nugphaset

Connect with MultCo: multico.us/services/restaurants

Phase One

Rules for Restaurants & Food Carts

Customer and Team Safety

Parties are limited to 10 people or fewer

Indoor and outdoor tables are spaced at least six (6) feet apart

Customers must remain at least 6 feet apart when ordering

Employees must wear a face covering (unless an accommodation for people with disabilities or other exemption applies)

Food and Menu

Stop serving food and drink by 10 p.m.

No self-serve buffets, salad bars, soda machines

Menus: single-use, disposable, laminated, online, or posted

Read the full guidance: tinyurl.com/dn9nugphaset

Connect with MultCo: multico.us/services/restaurants

Have a safer summer

If you're hanging out with people you don't live with, keep it outside and wear a face covering.

SUPPORTING your student learner DURING COVID-19

Although distance learning will help slow the spread of COVID-19 and keep our community healthier, it also makes it harder for parents to count on services that their children usually find at school.

You and your student don't have to experience the school year alone, as Multnomah County services and resources can help support you and your student during this unprecedented time.

- Healthcare Resources**
Multnomah County and our community partners are continuing to offer a wide range of services to give you and your child peace of mind that healthcare is within reach and affordable during the pandemic.
multico.us/supportingstudents/healthcare
- Learning Support**
Distance learning can make it hard to know how you can get extra help for your student, or support for your family. The County and our partners are here to support you and your student as you navigate the unique school year.
multico.us/supportingstudents/learning
- Financial Support for Families**
Stability at home is important to any student's ability to learn and endure the pandemic, and many people need extra support to stay safe and healthy with partners and children. There are people you can talk to about your experience, who can help you plan for your and your family's safety.
multico.us/supportingstudents/finance
- Keeping Students Safe**
Being in isolation with loved ones can increase tension, and many people need extra support to stay safe and healthy with partners and children. There are people you can talk to about your experience, who can help you plan for your and your family's safety.
multico.us/supportingstudents/safety

multico.us/SupportingStudents

show a little LOVE

STAY HOME
SHOP LOCAL IF YOU PLAN TO BUY GIFTS
SUPPORT OUR NEIGHBORS IN NEED

- Pandemic response and economic recovery go hand in hand.
- Businesses have relied on MultCo for timely, accurate, culturally appropriate information.



ORGANIZATIONAL CHART



**Tim
Lynch**
Program
Specialist
Senior
1 FTE

**Silvia
Tanner**
Program
Specialist
Senior
1 FTE

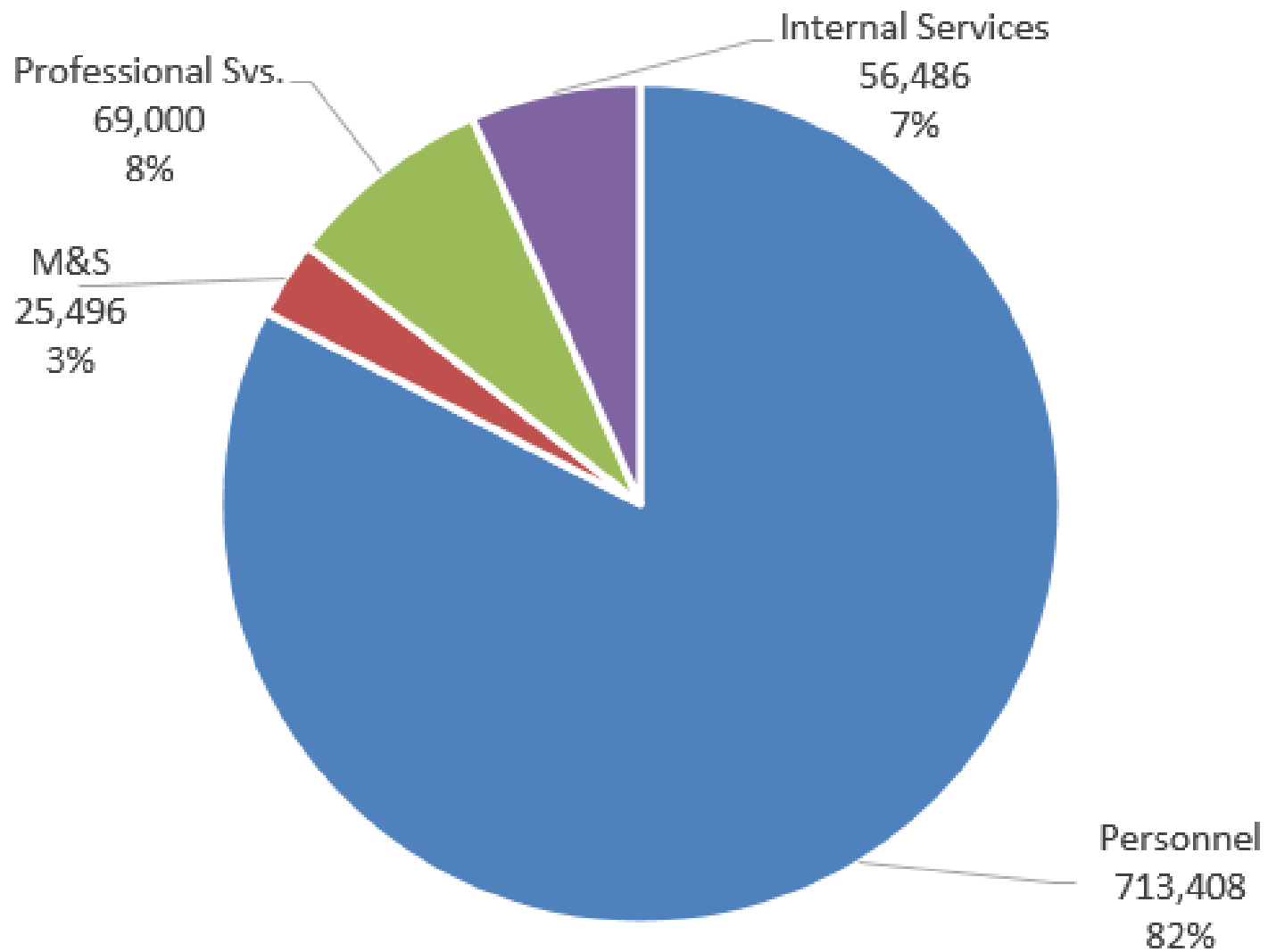
**JOHN
WASIUTYNSKI**
Staff Assistant
1 FTE

**Knowledg
e
Murphy**
Program
Technician
1 FTE

**Sara
Mihm**
Program
Communications
Specialist
1 FTE



FY2022 PROPOSED BUDGET



FY2022 BUDGET HIGHLIGHTS

- **Maintain current staffing levels**
- **Carry over Critical Energy Infrastructure Hub funding from the City of Portland; complete risk analysis Q1 FY 2022**
- **Support culturally -specific food system relief for families in need with \$200,000 ARP investment in CROPS Farm infrastructure**



QUESTIONS

