



Complaints Investigation Unit FY 2025 Proposed Budget

Presented to the
Board of County Commissioners

Multnomah County
May 2, 2024

Located at: www.multco.us/budget

Agenda

- Introduction
- Budget Approach & Equity
- Budget Overview
- Questions



Budget Approach

- Maintain current service level.
- Protected class complaints are enmeshed with equity and the work of the WESP.
- Our team of professional investigators conducts investigations of harassment and discrimination, often with intersecting identities.
- Resolution and Development Coordinator is the main point of contact when we close cases, so there is accountability and follow through even without a CIU investigation.

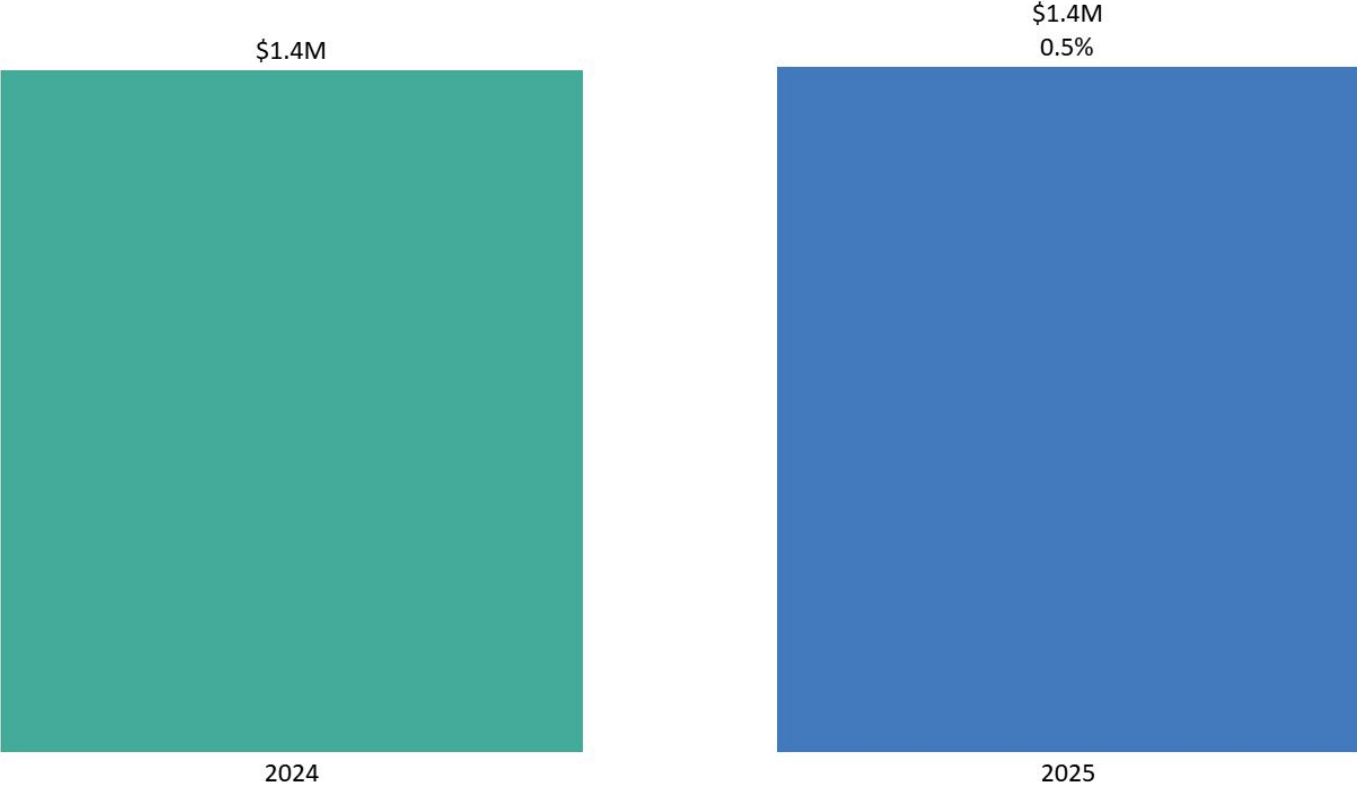


FY 2025 Proposed Budget Overview

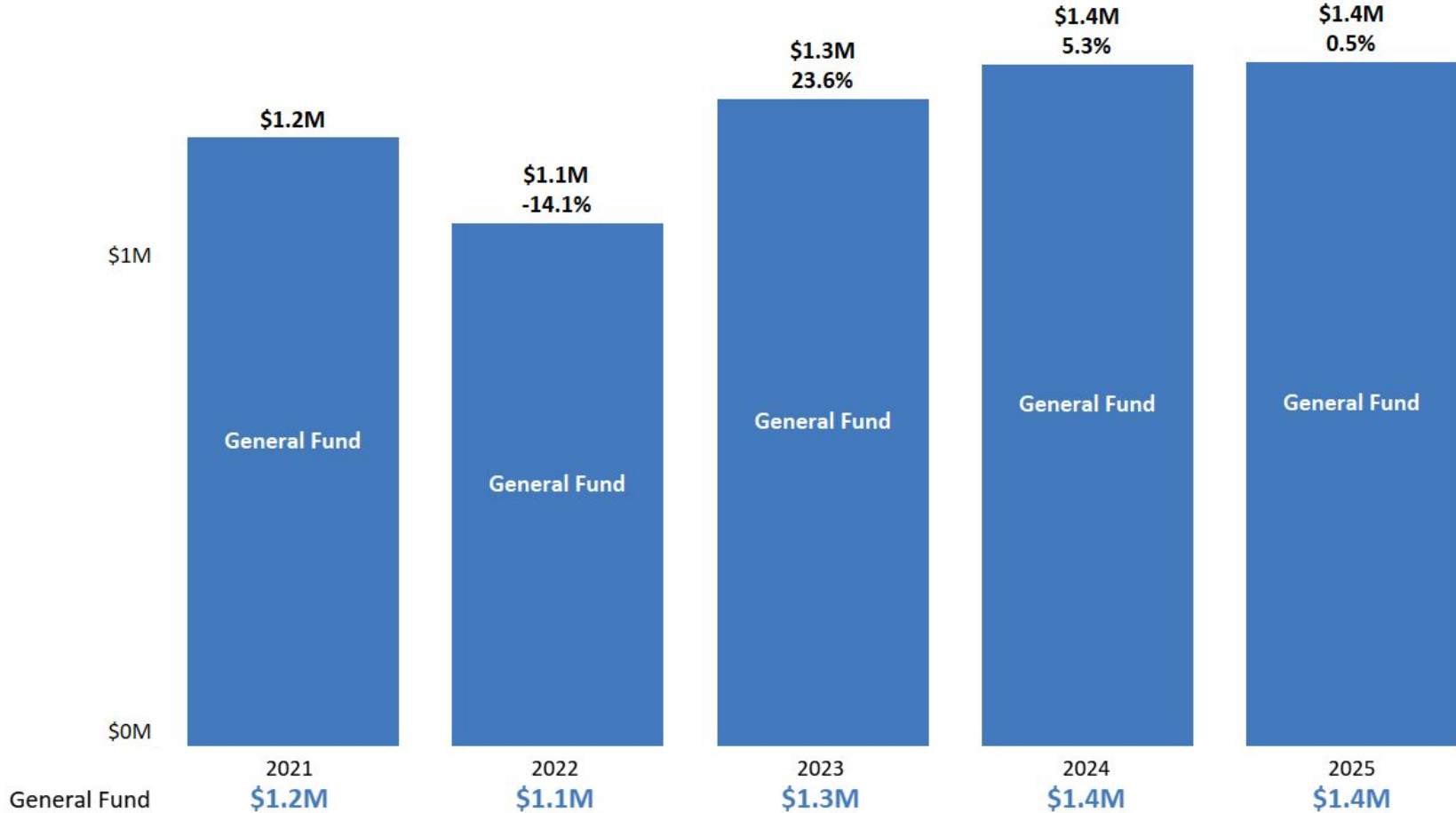


Operating Budget by Fund - \$1,394,317

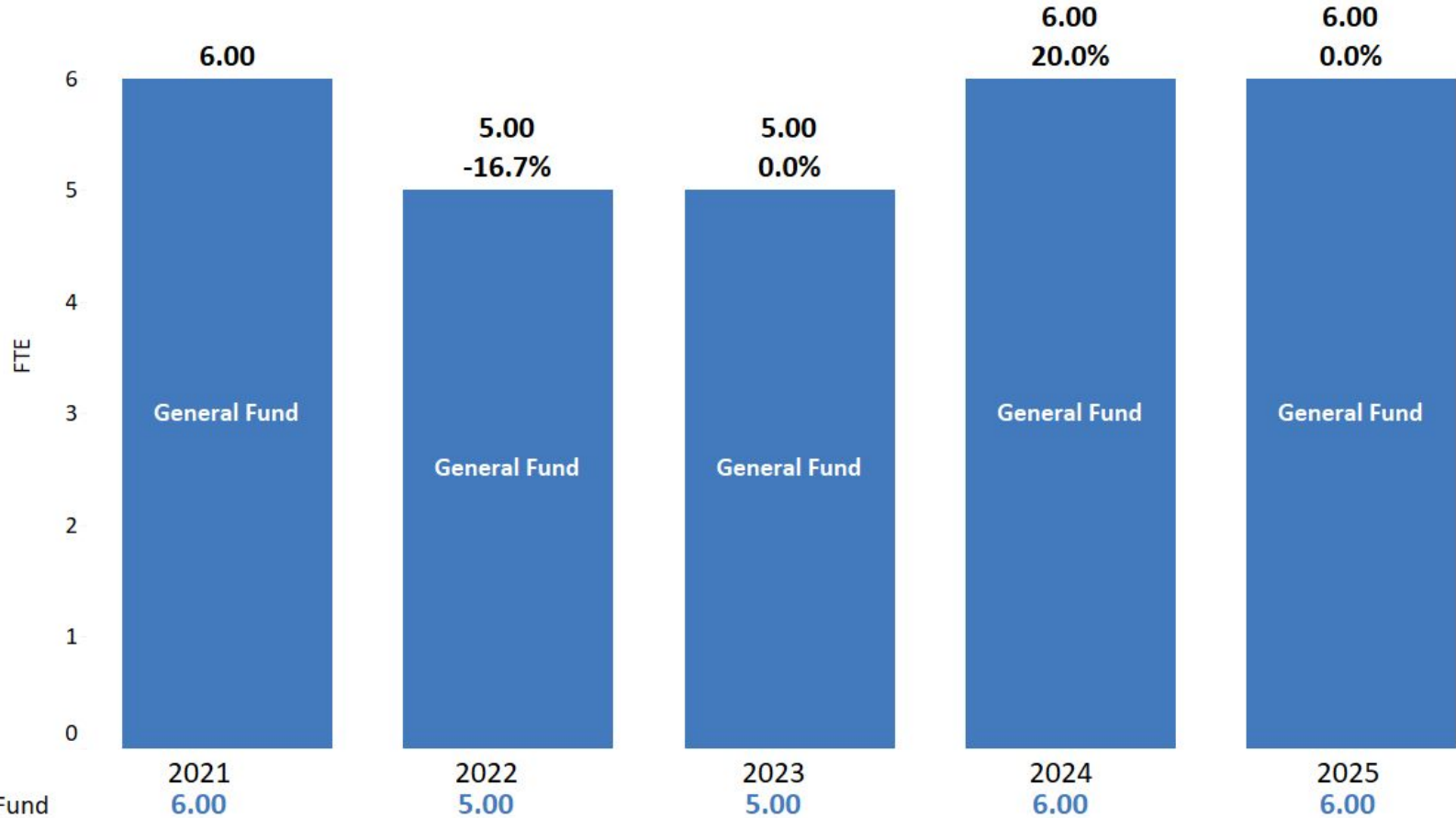
General Fund



5 Year Trend of Significant Operating Funds



FTE - 5 Year Trend



General Fund



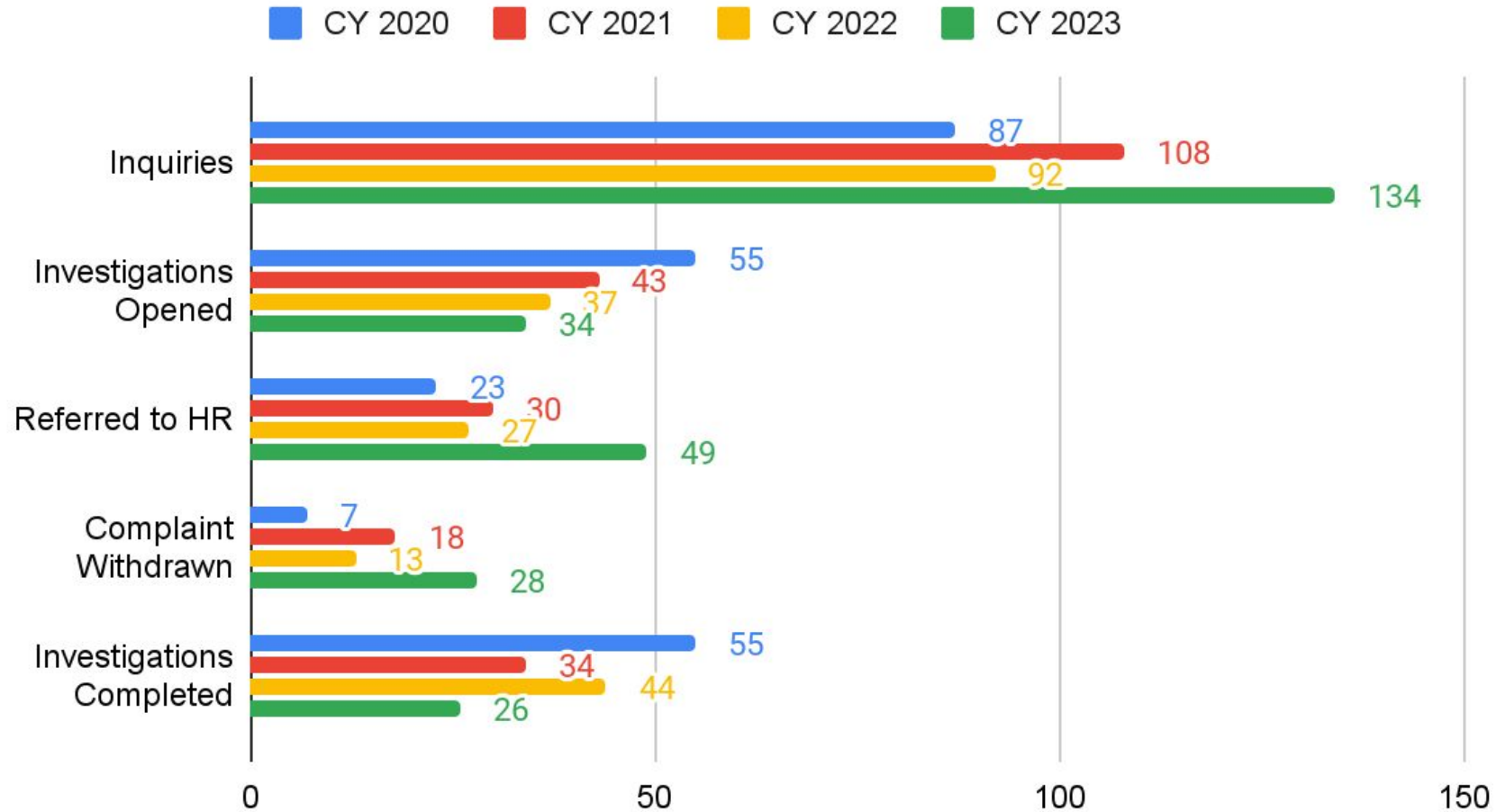
Operating Budget by Category - \$1,394,317



	2021	2022	2023	2024	2025
Personnel	\$1.0M	\$0.8M	\$1.1M	\$1.1M	\$1.2M
Internal Services	\$0.1M	\$0.1M	\$0.1M	\$0.1M	\$0.1M
Materials & Supplies	\$0.1M	\$0.1M	\$0.1M	\$0.1M	\$0.1M
Contractual Services	\$0.0M	\$0.0M	\$0.0M	\$0.0M	\$0.0M



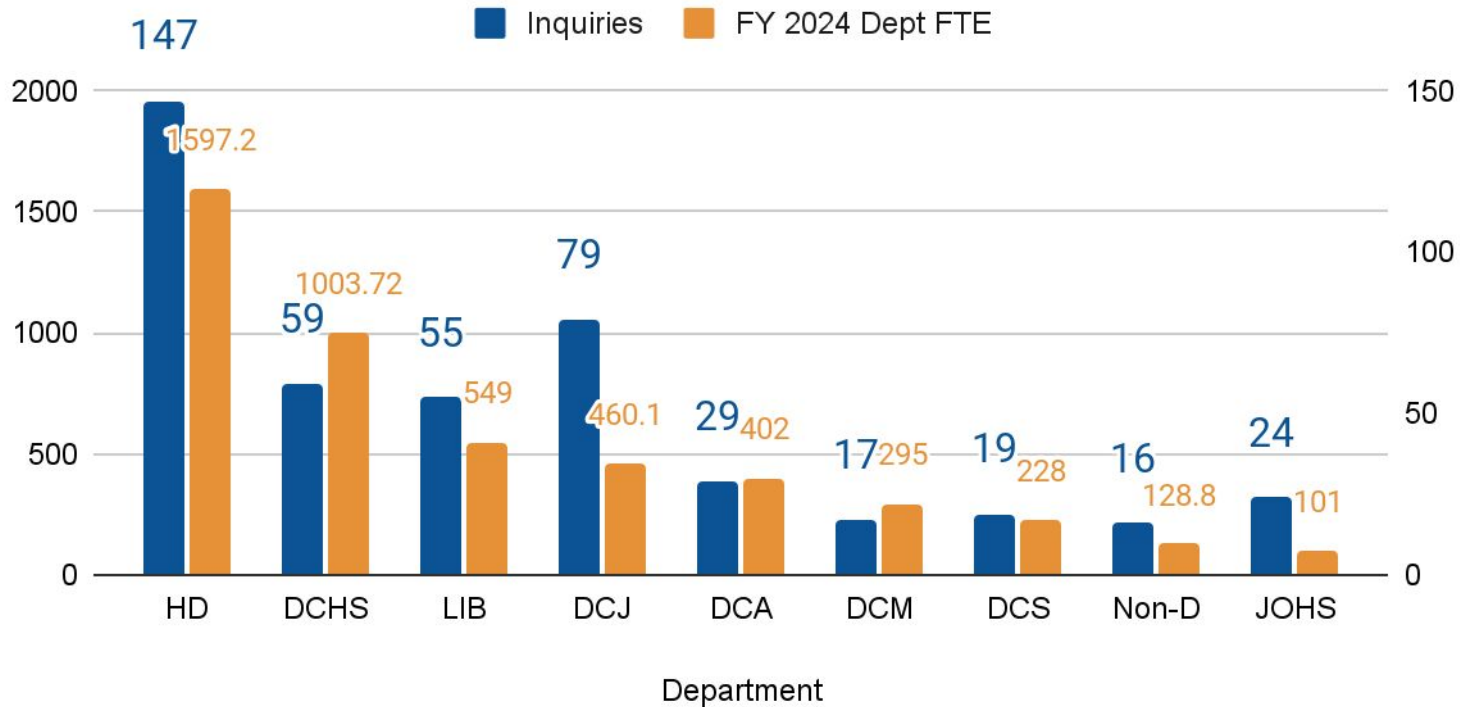
Outcome of all CIU Inquiries by Year



Service Trends

Inquiries by department

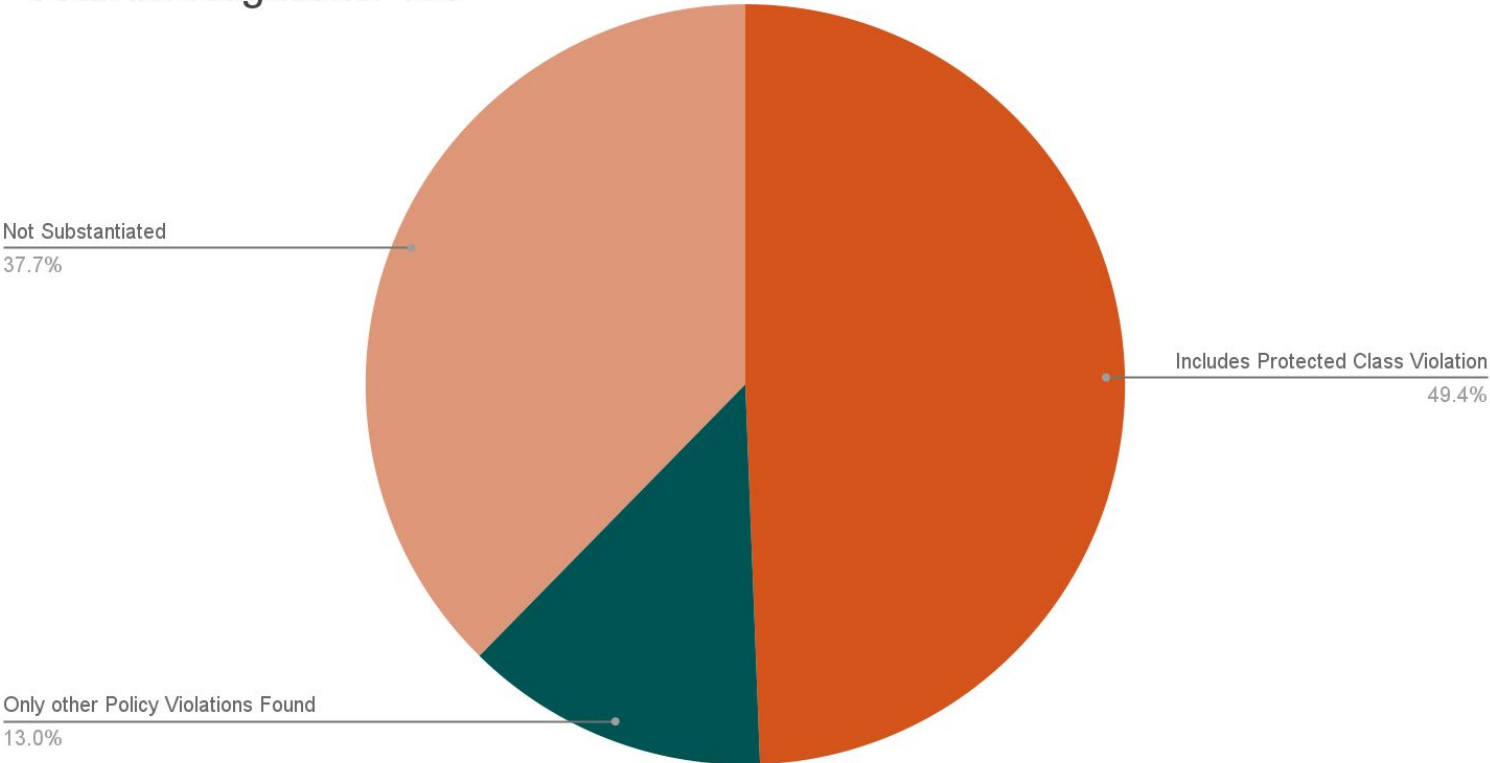
11/5/2019 to 12/31/2023



Service Trends

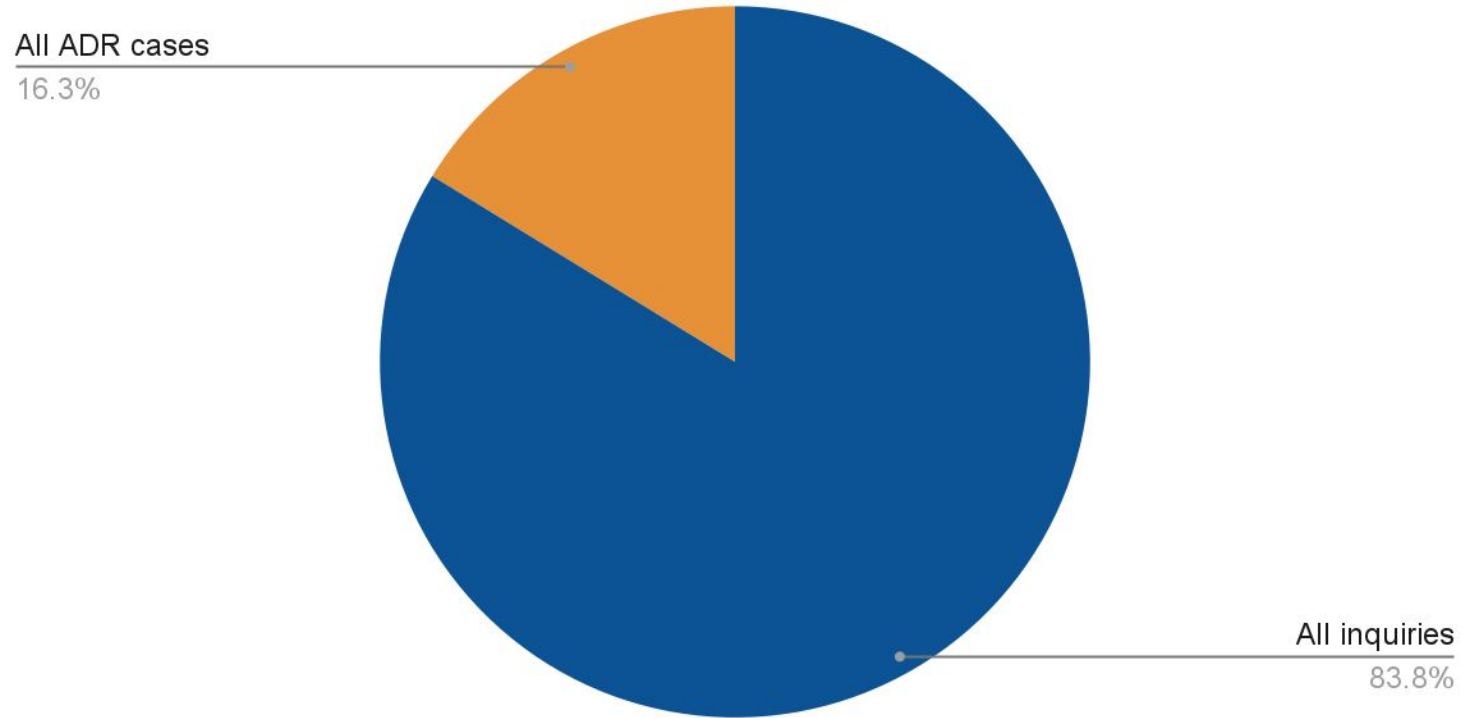
Investigation Findings (11/5/2019-12/31/2023)

Total investigations: 168



Service Trends

Percent of inquiries receiving alternative dispute resolution (ADR)
After hire of Resolutions Development Coordinator

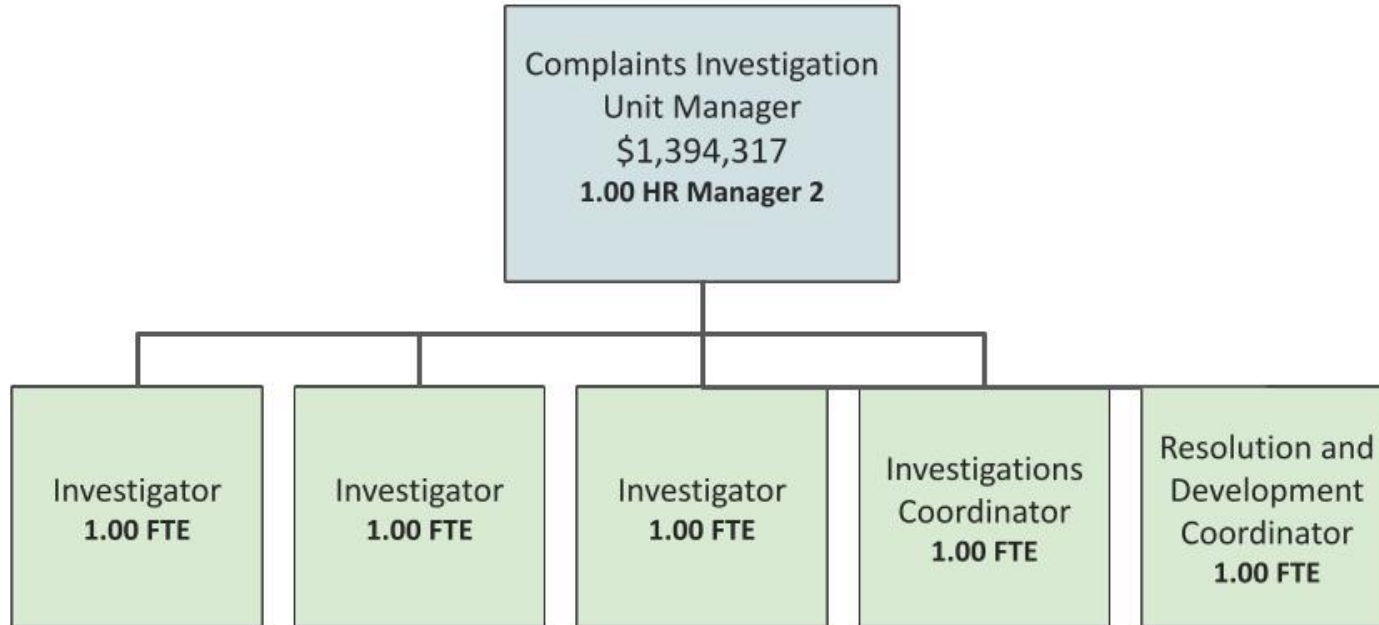


Methods used in Alternative Dispute Resolution and Post Investigation

- Coaching
- Mediation
- Facilitation
- Trainings
- Team development
- External coaches and trainings
- Support from:
 - Organizational Learning
 - Office of Diversity and Equity
 - Equity managers



Organizational Chart



General Fund Reductions

Program Name/# or Description	FY 2025 General Fund	General Fund FTE
Reduced materials and supplies (M&S) to right-size budget to actual costs.	(\$50,000)	
Total	\$(50,000)	0.00

