

Multnomah County  
 FY 2027 Budget Work Session Follow Up



**Community Justice**  
**April 29, 2026**

**Commissioner Singleton ( District 2 )**

Please provide a year over year comparison of all the Victim’s Advocates budgeted. Please include department, program, total FTE and total cost.

**Response:**

Three departments have the Victim Advocate job classification, shown below.

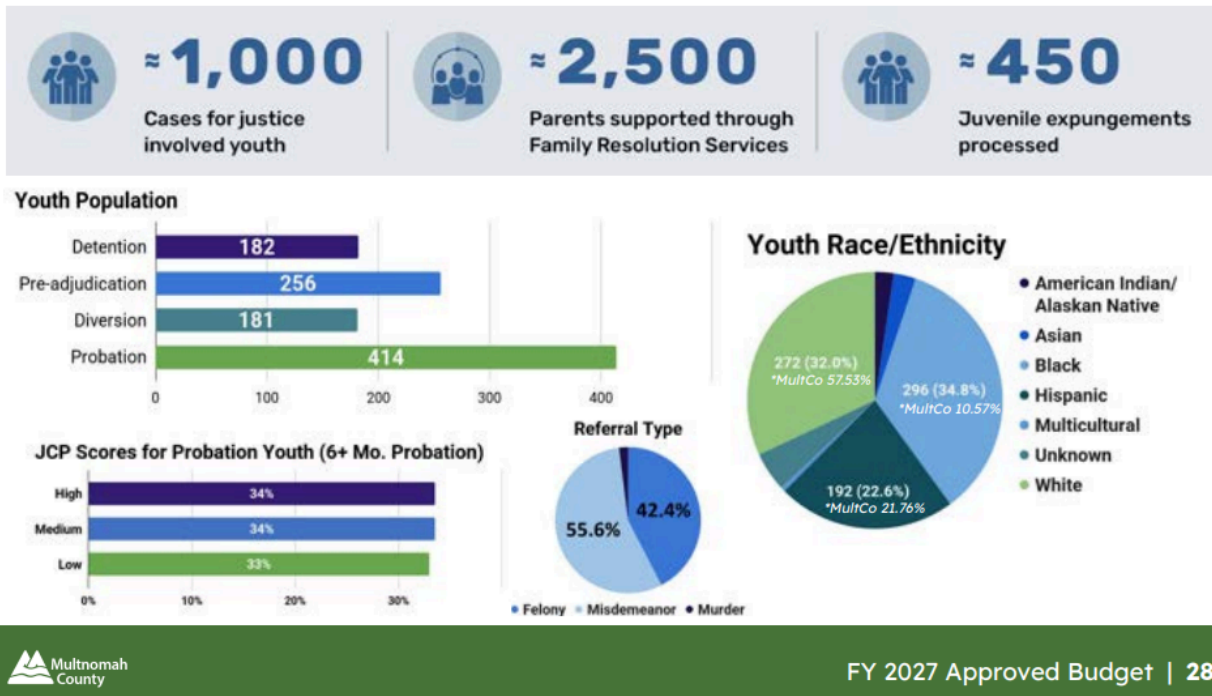
**Note that the table only reflects the Victim Advocate FTE within the program offer, not the totality of the program offer FTE and funding.**

Victim Advocate FTE - FY 2026 Adopted & FY 2027 Proposed						
Dept.	Division	Program Offer	Budget		FTE	
			2026 Adopted	2027 Proposed	2026 Adopted	2027 Proposed
DCJ	Director’s Office	50003 - DCJ Victim and Survivor Services	646,122	526,009	5.00	4.00
DCHS	Youth & Family Services	25047 - YFS - Domestic Violence Crisis Response Unit	1,115,712	1,163,590	9.00	9.00
		25050 - YFS - Gateway Center	515,624	545,634	4.00	4.00
MCDA	Justice Integrity & Victim Services	15015 - Victim Assistance Program	1,389,249	1,436,478	11.00	11.00
	Family Justice & Community Impact	15103 - Child Abuse Unit	126,161	133,677	1.00	1.00
<b>Total</b>			<b>3,792,868</b>	<b>3,805,388</b>	<b>30.00</b>	<b>29.00</b>

## Commissioner Brim Edwards ( District 3 )

Can you provide more information about what comprises the Juvenile Misdemeanor referrals and why it is such a large part of the juvenile population.

### Juvenile Services: Who We Serve



### Response:

The FY 2025 juvenile referral data includes pre-adjudication allegations and post-adjudication formal probation; however, it is limited to formal justice system contacts and may not fully reflect all diversionary programs or informal handlings

Unlike with DCJ's Adult Services probation and post-prison supervision, DCJ's Juvenile Services Division provides services to *all* cases referred and directed by law enforcement, the Courts and District Attorney's Office, including both felonies and misdemeanors.

The following is a breakdown of the percentage of the allegation and referral type included in the juvenile referral data summary above:

ORS Description	%
<b>Felony</b>	<b>59.97%</b>
Aggravated Harassment	0.15%
Aggravated Theft-1	0.15%
Arson-1	0.15%
Arson-2	0.31%
Assault Pub Safety Ofcr	0.31%
Assault-2	1.07%
Assault-3	5.23%
Assault-4 - Fel	0.77%
Assault-4 Witness by Victim Minor Child	0.15%
Attempt Assault-1	0.46%
Attempt Assault-2	0.15%
Attempt Assault-3	0.15%
Attempt Burglary-1	0.15%
Attempt Murder 2nd Degree	1.53%
Attempt Rape-1	0.15%
Attempt Sexual Abuse 1	0.15%
Burglary-1	0.61%
Burglary-2	2.00%
Carry/Use Dangerous Weapon	1.84%
Coercion	0.31%

<b>ORS Description</b>	<b>%</b>
Criminal Mischief-1	4.76%
Criminal Mischief-2	3.99%
Encouraging Child Sex Abuse 1	0.46%
Fail to Perform Duties Driver - Injured Persons	0.46%
Fleeing or Attempting Elude Police on Foot	0.77%
Fleeing or Attempting Elude Police/Vehicle	3.53%
Forgery-1	0.15%
Fraud-Credit Card (Fel C)	0.15%
Invasion of Personal Privacy 1st Degree	0.15%
Oblit Id Marks Firearm	0.15%
Poss Burglary Tool	0.15%
Poss Firearm/Weapon Public Bldg	0.31%
Poss Forgery Device	0.15%
Poss Stolen Vehicle	3.07%
Rape-1	0.77%
Robbery-1	2.15%
Robbery-2	1.69%
Robbery-3	0.61%
Sexual Abuse 1	0.92%
Sexual Abuse 2	0.46%
Sodomy-1	0.31%
Sodomy-2	0.15%
Strangulation (FEL)	0.62%

<b>ORS Description</b>	<b>%</b>
Theft By Extortion	0.15%
Theft of Identity	0.61%
Theft-1	2.00%
Theft-2	10.90%
Unauth Use Vehicle	1.38%
Unlaw Poss Firearms/Silencer	0.46%
Unlaw use Weapon Agst Another	0.31%
Unlawful Discharge of Weapon	0.15%
Unlawful Mfr/Del Cntrld Substance - Sched I	0.15%
Unlawful Mfr/Del Cntrld Substance w/in 1000' School	0.77%
Unlawful Mfr/Del Cntrld Substance-Sched II	0.92%
Unlawful Poss Cntrld Substance-Sched I-Agg Circ FEL	0.15%
Unlawful Poss Cntrld Substance-Sched II-Agg Circ FEL	0.15%
Use Child Display Sex Conduct	0.15%
<b>Misdemeanors</b>	<b>40.05%</b>
Assault-3 (MISD Treatment)	0.15%
Attempt Assault Pub Safety Ofcr	0.31%
Assault-3 (MISD Treatment)	0.15%
Assault-4 - Mis	8.60%
Attempt Fail Perform Duties Driver/Pd	0.15%
Attempt Theft-1	0.15%
Attempt Unauth Use Vehicle	0.15%
Carry Concealed Weapon	0.31%

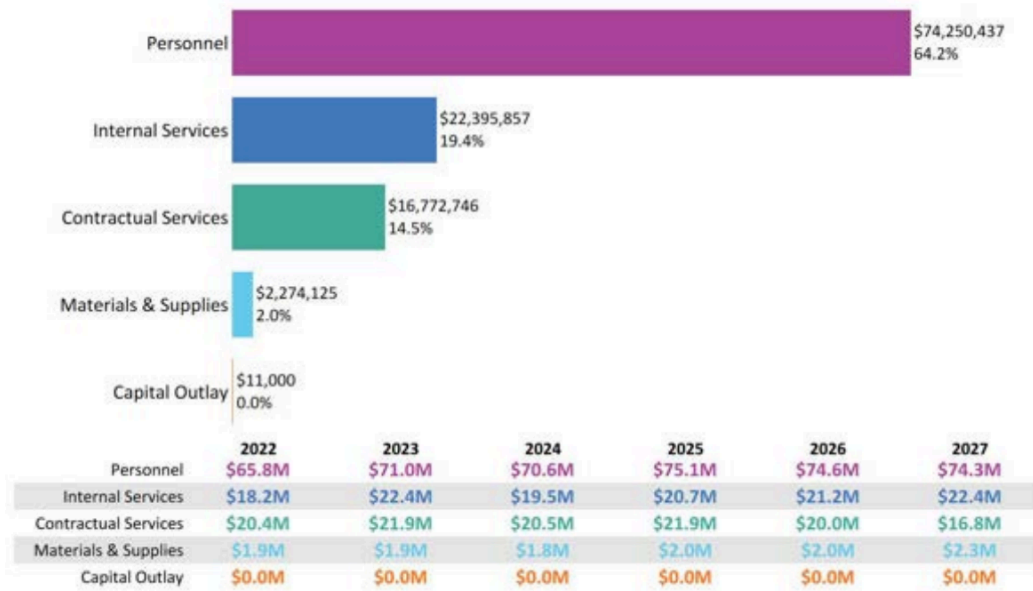
ORS Description	%
Commercial sexual solicitation	0.15%
Conspiracy Theft-2	0.15%
Criminal Driving While Suspended or Revoked (Mis)	0.31%
Criminal Mischief-3	1.84%
Criminal Mistreatment-2	0.15%
Criminal Trespass-1	0.31%
Criminal Trespass-2	1.54%
Disorderly Conduct-2	2.00%
DUII	0.61%
Escape-3	0.46%
Fail Perform Duties Driver/Pd	0.92%
Fleeing or Attempting Elude Police/Vehicle (ORS 161705)	0.15%
Fraud-Credit Card (Mis A)	0.15%
Give false Info to Police	0.15%
Harassment	5.23%
Harassment Physical	0.15%
Harassment Touch Intimate Part	0.15%
Interfering w/Peace Office	0.31%
Menacing	1.54%
Offensive Physical Contact	0.15%
Possession of a Loaded Firearm in a Public Place	0.31%
Prostitution	0.15%
Reckless Burning	0.46%

<b>ORS Description</b>	<b>%</b>
Reckless Driving	0.61%
Recklessly Endanger Another	0.46%
Resist Arrest	0.15%
Sell, Distribute, Possess, Etc. Prescription Drug	0.15%
Sexual Abuse 3	0.31%
Telephonic Harassment	0.61%
Theft-3	5.38%
Unlawful Dissemination of Intimate Image	0.62%
Unlawful Entry Motor Vehicle	1.23%
Unlawful Poss Cntrl'd Substance-Sched I-40(+) unit MIS	0.15%
Unlawful Possession Firearms	2.61%
Unlawful Possession of Marijuana by Person Under 21	0.15%
Vio Ct Stalking Ord - Mis	0.31%
<b>Grand Total</b>	<b>100.00%</b>

**Commissioner Singleton ( District 2 )**

Please provide a breakout of the department’s contractual services. Contracts under \$8,000 do not need to be listed. See attachment.

**Operating Budget by Category - \$115.7 million**



Prog. Ledger Account	Description	FY 2027 General Fund	FY 2027 Other Funds	FY 2027 Total
<b>50000 - DCJ Director's Office</b>				
60170 - Professional Services	Equity Program Initiatives	10,000		10,000
60170 - Professional Services	Consulting coaching	20,000		20,000
60170 - Professional Services	WESP Training, Initiative Consultation, Dept-wide Equity training	24,913		24,913
60170 - Professional Services	Professional trainers and department-wide Learning Day	35,000		35,000
60170 - Professional Services	Management Leadership Training	40,040		40,040
<b>50001 - DCJ Business Services</b>				
60170 - Professional Services	Add GF Exp in place of central indirect from SHS - BCC Amend 48	8,863		8,863
60170 - Professional Services	Interpreter services and form translation	44,189		44,189
60160 - Pass-Through/Prog. Support	TBD	53,920		53,920
<b>50002 - DCJ Business Applications and Technology</b>				
60170 - Professional Services	Data/Phone moves, adds, changes (MACs) for DCJ	13,000		13,000
60170 - Professional Services	Equipment maintenance (includes fingerprint machines)	20,000		20,000
<b>50003 - DCJ Victim and Survivor Services</b>				
60155 - Direct Client Assistance	Victims Emergency Fund	75,000		75,000
60160 - Pass-Through/Prog. Support	Victim/Offender Restorative Dialogue contract	111,968		111,968
<b>50005 - DCJ Human Resources</b>				
60170 - Professional Services	On demand content training	15,000		15,000
60170 - Professional Services	Recruitment advertising, events, supplies	20,000		20,000
60170 - Professional Services	Pre-employment psych evaluations and Fit for Duty evaluations for arming	22,150		22,150
60170 - Professional Services	Mediation services, manager coaching	30,000		30,000
60170 - Professional Services	Mediation services to address protected class complaints	50,000		50,000
<b>50013 - Adult Culturally Responsive Supervision</b>				
60170 - Professional Services	Client Trauma curriculum and graduation activities	9,000		9,000
60160 - Pass-Through/Prog. Support	Batterer's Intervention Services	9,026		9,026

<b>Prog. Ledger Account</b>	<b>Description</b>	<b>FY 2027 General Fund</b>	<b>FY 2027 Other Funds</b>	<b>FY 2027 Total</b>
60155 - Direct Client Assistance	Client snacks, incentives and basic need items	20,000		20,000
60160 - Pass-Through/Prog. Support	CR Wraparound Services	111,815		111,815
60160 - Pass-Through/Prog. Support	Probation Wraparound Services	590,010		590,010
<b>50016 - Adult Services Management</b>				
60170 - Professional Services	Consultation, specialized training, EPICS, etc.	37,848		37,848
60170 - Professional Services	City of Portland Radio Communications contract	78,079		78,079
<b>50017 - Adult Records and Administrative Services</b>				
60170 - Professional Services	Print orders for programs at Mead (City of Portland Print Shop)	12,000		12,000
60170 - Professional Services	Drug/UA Testing and Confirmation	30,000		30,000
60155 - Direct Client Assistance	Client bus tickets	43,183		43,183
<b>50022 - Adult Justice Reinvestment Program</b>				
60155 - Direct Client Assistance	Client snacks, incentives, basic need items	8,000		8,000
60160 - Pass-Through/Prog. Support	Data Analyst		51,941	51,941
60160 - Pass-Through/Prog. Support	MCJRP Stabilization Housing: 10 beds	2,090	79,180	81,270
60160 - Pass-Through/Prog. Support	Clean & Sober Housing		134,454	134,454
60160 - Pass-Through/Prog. Support	MCJRP Stabilization housing: 2 Case Managers	75,946	109,702	185,648
60160 - Pass-Through/Prog. Support	Court Coordinator		200,853	200,853
60160 - Pass-Through/Prog. Support	Social Worker		288,259	288,259
60160 - Pass-Through/Prog. Support	Case Manager		325,806	325,806
60160 - Pass-Through/Prog. Support	Cognitive Behavioral Peer Treatment Readiness		394,861	394,861
<b>50024 - Adult Mental Health Unit and Mental Health Treatme</b>				
60155 - Direct Client Assistance	Client outreach basic need items for outdoor living	12,000		12,000
60160 - Pass-Through/Prog. Support	Mental Health housing: Harriet 2 beds @ FY25 Rate \$952.04 ea/month	23,466		23,466
60160 - Pass-Through/Prog. Support	Nurse Practitioner		36,568	36,568
60160 - Pass-Through/Prog. Support	Pine: 10 men's Mental Health beds	83,883		83,883
60160 - Pass-Through/Prog. Support	QMHP B		92,652	92,652
60160 - Pass-Through/Prog. Support	Pine: 1 Mental Health Case Manager	94,409		94,409
60160 - Pass-Through/Prog. Support	Pine: 1 Mental Health Peer Recovery Mentor	94,409		94,409

<b>Prog. Ledger Account</b>	<b>Description</b>	<b>FY 2027 General Fund</b>	<b>FY 2027 Other Funds</b>	<b>FY 2027 Total</b>
60160 - Pass-Through/Prog. Support	QMHP A		99,543	99,543
60160 - Pass-Through/Prog. Support	Phase 2 - transition housing, Morrison House (8 beds)	188,389		188,389
60160 - Pass-Through/Prog. Support	Phase 1 - Men's Stabilization program (14 beds)	536,725		536,725
60160 - Pass-Through/Prog. Support	Intensive Forensic Clinical Coordination IFCC	686,974		686,974
60160 - Pass-Through/Prog. Support	7 guaranteed mental health beds @ \$310/each/day. Negotiated rate	877,315		877,315
<b>50025 - Adult Sex Crimes Unit</b>				
60170 - Professional Services	Pilot for monitoring client computers	10,000		10,000
60170 - Professional Services	Sex offender polygraphs	43,079	11,921	55,000
60160 - Pass-Through/Prog. Support	Sex offender evaluation and treatment and SONL evaluations	114,709		114,709
<b>50026 - Adult Domestic Violence Supervision</b>				
60170 - Professional Services	DV sex offender polygraphs and psych evaluations	8,376		8,376
60160 - Pass-Through/Prog. Support	Batterer's Intervention Services	103,546		103,546
<b>50027 - Adult Women and Family Services Unit</b>				
60155 - Direct Client Assistance	Rent, Utilities, Aid to Families in Recovery	9,000		9,000
60155 - Direct Client Assistance	Client snacks, incentives and basic need items	5,685	7,253	12,938
60160 - Pass-Through/Prog. Support	Family Sentencing Alternative, parenting education, case management, mentoring and support groups.		58,128	58,128
60160 - Pass-Through/Prog. Support	WFSU Recovery: Mentor/Case Mgmt Services	105,411		105,411
60160 - Pass-Through/Prog. Support	Wraparound Services	130,000		130,000
<b>50029 - Adult Electronic Monitoring</b>				
60170 - Professional Services	Electronic Monitoring	306,144		306,144
<b>50030 - Adult Specialty Treatment Courts</b>				
60155 - Direct Client Assistance	Participant supports, client motivational enhancements and basic need items	12,000		12,000
60155 - Direct Client Assistance	Client bus tickets	3,387	13,513	16,900
60160 - Pass-Through/Prog. Support	Start Court Pre-engagement, Care Coordination & Reporting		21,151	21,151

<b>Prog. Ledger Account</b>	<b>Description</b>	<b>FY 2027 General Fund</b>	<b>FY 2027 Other Funds</b>	<b>FY 2027 Total</b>
60155 - Direct Client Assistance	Housing Direct Pay		38,527	38,527
60160 - Pass-Through/Prog. Support	Culturally responsive peer mentor services		45,696	45,696
60160 - Pass-Through/Prog. Support	Court Participation and Staff/Policy Meetings		53,582	53,582
60160 - Pass-Through/Prog. Support	Start Court Participation & Court Staff/Policy Meetings		63,452	63,452
60160 - Pass-Through/Prog. Support	Network cognitive programming and wraparound support		105,754	105,754
60160 - Pass-Through/Prog. Support	Defense Attorney		202,119	202,119
<b>50031 - Adult and Juvenile Community Service</b>				
60160 - Pass-Through/Prog. Support	Project Payback youth incentives	26,563		26,563
60160 - Pass-Through/Prog. Support	Restitution Payments for Clients	95,475	54,120	149,595
<b>50032 - Adult Gang Unit</b>				
60170 - Professional Services	Client trauma curriculum and graduation activities	9,000		9,000
60155 - Direct Client Assistance	Client needs: utilities, transportation, cell phones, housing, etc.	15,000		15,000
60160 - Pass-Through/Prog. Support	Batterer's Intervention Services	15,013		15,013
60160 - Pass-Through/Prog. Support	Community Violence Prevention HEAT Program expansion	42,559		42,559
60155 - Direct Client Assistance	Client HEAT incentives for group meetings (gift cards)	145,000		145,000
60160 - Pass-Through/Prog. Support	Gang/CR wraparound Services	335,445		335,445
<b>50033 - Adult Driving Under the Influence Supervision Unit</b>				
60160 - Pass-Through/Prog. Support	UA Program		10,200	10,200
60160 - Pass-Through/Prog. Support	Sober Housing		10,276	10,276
60170 - Professional Services	Electronic Monitoring		26,010	26,010
60160 - Pass-Through/Prog. Support	Admission Coordination/Court Participation and Meetings		52,436	52,436
<b>50034 - Adult Transition Services Unit (TSU)</b>				
60155 - Direct Client Assistance	Emergency shelter supplies	24,570		24,570
60170 - Professional Services	Staff Clinical Supervision	25,000		25,000
60155 - Direct Client Assistance	Rental Assistance	34,664		34,664
60155 - Direct Client Assistance	Client Bus Passes	40,000		40,000
60160 - Pass-Through/Prog. Support	Harold: 6 men's culturally specific A&D free beds	50,330		50,330
60155 - Direct Client Assistance	Client snacks, incentives and basic need items	52,757		52,757
60155 - Direct Client Assistance	Medicaid Waiver	54,657		54,657

<b>Prog. Ledger Account</b>	<b>Description</b>	<b>FY 2027 General Fund</b>	<b>FY 2027 Other Funds</b>	<b>FY 2027 Total</b>
60155 - Direct Client Assistance	Goodwill Vouchers	60,000		60,000
60160 - Pass-Through/Prog. Support	Henry: 1 Case Manager	71,647		71,647
60160 - Pass-Through/Prog. Support	Shoreline: Case Manager	71,647		71,647
60160 - Pass-Through/Prog. Support	Other Housing Costs - Mid Year Rate Changes	72,580		72,580
60160 - Pass-Through/Prog. Support	Jean's Place: 4 women's beds		81,329	81,329
60160 - Pass-Through/Prog. Support	Other Housing - Mid Year Rate Changes	36,249	46,424	82,673
60160 - Pass-Through/Prog. Support	Medford: 16 market rate rental units	44,381	38,666	83,047
60160 - Pass-Through/Prog. Support	Harold: 1 Mental Health Peer Recovery Mentor	94,409		94,409
60160 - Pass-Through/Prog. Support	46th Ave: 18 A&D free beds for MCJRP and Prison Releases.	150,988		150,988
60160 - Pass-Through/Prog. Support	Henry: Special needs Mental Health 20 mixed units	185,820		185,820
60160 - Pass-Through/Prog. Support	46th Ave: 2 Recovery Peer Mentors	188,821		188,821
60160 - Pass-Through/Prog. Support	Clark Center: 12 mixed beds	207,147		207,147
60160 - Pass-Through/Prog. Support	STTL Housing	230,729		230,729
60160 - Pass-Through/Prog. Support	Flip the Script - housing navigation and peer mentor services	413,200		413,200
60160 - Pass-Through/Prog. Support	Medford: 30 Transitional beds	440,147		440,147
60160 - Pass-Through/Prog. Support	Shoreline: 62 men's beds	1,052,679	84,222	1,136,901
<b>50041 - Adult Stabilization and Readiness Program (SARP)</b>				
60155 - Direct Client Assistance	Client Assistance - Basic Needs	17,627		17,627
<b>50050 - Juvenile Services Management</b>				
60170 - Professional Services	JSD Drug Test Lab	8,500		8,500
60170 - Professional Services	Consultation on detention performance and improvement model	15,000		15,000
60170 - Professional Services	FRS video	15,000		15,000
60170 - Professional Services	Zone 8 Detention enhancement	65,000		65,000
60170 - Professional Services	Trauma informed training, facilitation, grant writing, etc	100,176		100,176
<b>50052 - Juvenile Family Resolution Services (FRS)</b>				
60170 - Professional Services	Parent Education		50,000	50,000
<b>50054 - Juvenile Detention Services</b>				
60170 - Professional Services	Hair services for youth in detention	15,000		15,000
60170 - Professional Services	Detention programming	37,000		37,000

<b>Prog. Ledger Account</b>	<b>Description</b>	<b>FY 2027 General Fund</b>	<b>FY 2027 Other Funds</b>	<b>FY 2027 Total</b>
<b>50055 - Juvenile Community Monitoring Program</b>				
60160 - Pass-Through/Prog. Support	Supervision to youth in the community	10,895		10,895
60170 - Professional Services	Electronic Monitoring	21,869	17,235	39,104
60160 - Pass-Through/Prog. Support	Community and Electronic monitoring		505,087	505,087
<b>50056 - Juvenile Shelter &amp; Residential Placements</b>				
60160 - Pass-Through/Prog. Support	Transitional Housing/Placements	21,162	367,596	388,758
<b>50057 - Juvenile Pre-Adjudication and Informal Supervision</b>				
60155 - Direct Client Assistance	Incentives, pro-social activities and other basic needs for youth.		12,227	12,227
<b>50058 - Juvenile Field Probation</b>				
60155 - Direct Client Assistance	Youth basic need items (clothing, etc.)		10,000	10,000
60160 - Pass-Through/Prog. Support	Violence Prevention (formally for IRCO)	54,345		54,345
60170 - Professional Services	All Other Services (Psych, Sex Offender, etc.)	65,561		65,561
60160 - Pass-Through/Prog. Support	Youth mentoring	10,000	57,217	67,217
60160 - Pass-Through/Prog. Support	Community Violence and Probation wraparound services for Latino		562,178	562,178
60160 - Pass-Through/Prog. Support	Culturally Responsive services for African American youth		631,235	631,235
60160 - Pass-Through/Prog. Support	Probation Wraparound Services	1,454,597		1,454,597
<b>50066 - Juvenile Restorative Practices Team</b>				
60160 - Pass-Through/Prog. Support	Community Violence Prevention HEAT Program	59,006		59,006
<b>50067 - Juvenile CHI Early Intervention &amp; Prevention Servi</b>				
60160 - Pass-Through/Prog. Support	Early intervention Latino Youth		98,870	98,870
60160 - Pass-Through/Prog. Support	Early intervention African American Youth		148,304	148,304