

Multnomah County  
FY 2027 Budget Work Session Follow Up  
**General Fund 5-Year Forecast Update**  
**May 20, 2026**



**Responses Due on or before: May 28, 2026**

---

**Commissioner Brim Edwards** ( District 3 )

Please provide the local data for Local Long-Term Unemployment.

**Response:**

I spoke with the Oregon Employment Department and the data on length of unemployment is not tracked at the local level. The following chart shows the same information presented in the forecast but for Oregon only.



**Commissioner Brim Edwards ( District 3 )**

For the monthly recording fees how many transactions is it by type?

**Response:**

DART is pulling this data together. We will share it with the Board as soon as it is available.

**Commissioner Moyer ( District 1 )**

Please provide the COLA ranges for the ratified contracts.

**Response:**

Bargaining Unit	FY 2027 COLA	Notes
AFSCME - Dentists	—	<i>Currently bargaining</i>
AFSCME - General Unit	3.50%	
AFSCME - Pharmacist	3.30%	
AFSCME - Physicians/Psychiatrist	3.30%	
DSA - Deputy Sheriffs Association	—	<i>Currently bargaining</i>
Elected Officials and Staff	3.30%	
FOPPO - Federation of Parole and Probation Officers	3.30%	
IBEW - Electricians	3.30%	
IUOE - Operating Engineers	3.30%	
JCSS - Juvenile Custody Services Specialists	3.30%	
MCCDA - Corrections Deputy Association	3.30%	
MCPAA - Prosecuting Attorneys	3.30%	
Nonrepresented	3.30%	
ONA - Oregon Nurses Association	3.50%	

Bargaining Unit	FY 2027 COLA	Notes
Painters and Allied Trades	3.30%	

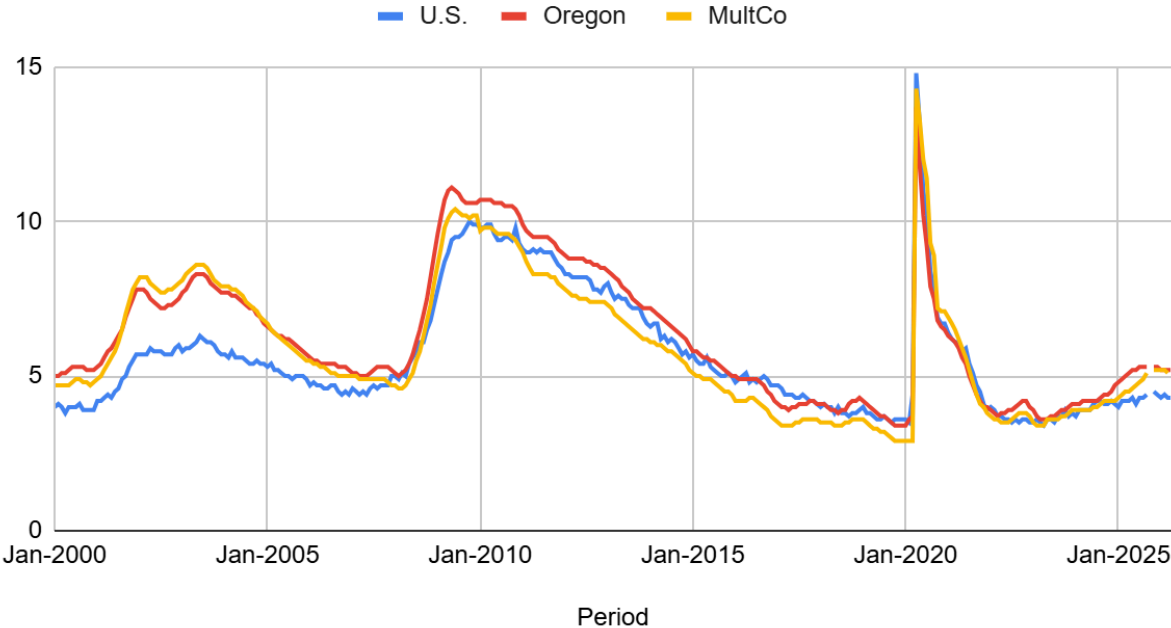
**Commissioner Brim Edwards ( District 3 )**

For the graphs showing national data, please provide the corresponding local figures?

**Response:**

The following graphs show the Unemployment rates for the United States, Oregon, and Multnomah County going back to January 2000, and the percent change in employment for the same three geographies going back to January 2004.

# Unemployment Rate Comparison



# Comparison of Employment Percent Change from January 2004

