

Multnomah County Jail Capacity Management Plan

Multnomah County Sheriff Nicole Morrisey O'Donnell

Business Services Chief Jon Harms Mahlandt

Planning and Research Manager Kevin Maurelli

October 28, 2024



MULTNOMAH COUNTY
SHERIFF'S OFFICE

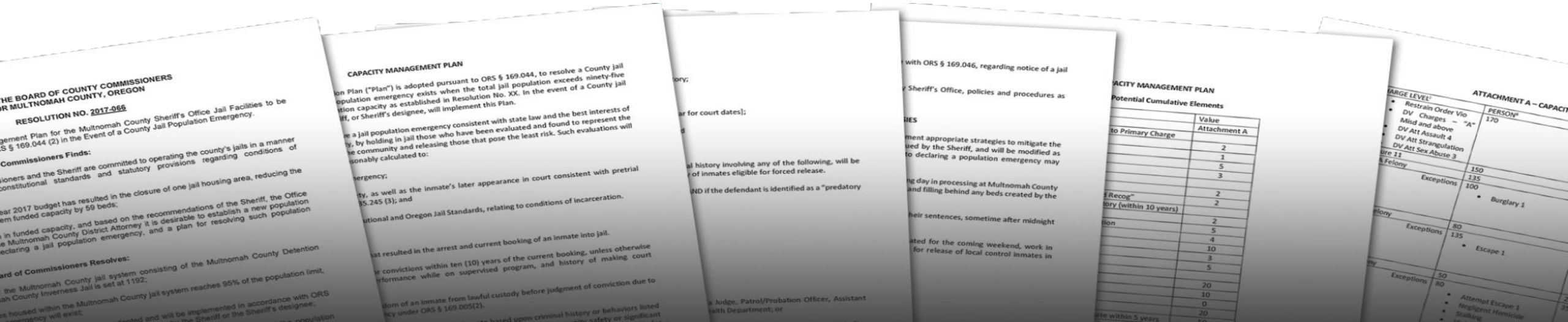
Agenda

- What is the Capacity Management Plan (CMP)?
- Jail bed adjustments: 2020 (COVID) - 2024
- Jail population demographics
- Shared stakeholder model: 90% early warning process
- Population emergency: 95% booking and release impacts
- CMP Review Committee: update the plan for BOCC vote
- Questions

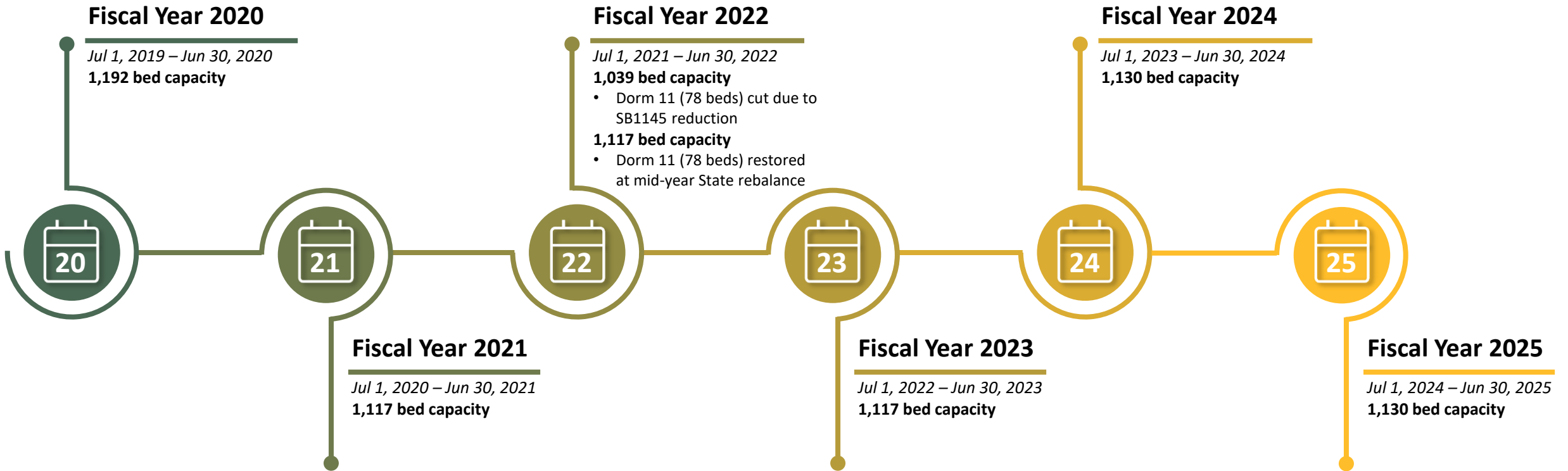


What is the Capacity Management Plan?

- Adopted pursuant to law, budget, and jail operations
- Mitigates County jail population emergencies (95% of capacity)
- Forced release procedures based on risk to community safety
- Partners recommend amendments to release criteria and scoring



Budgeted Jail Beds



Jail Capacity Overview

Jail Population Snapshot as of 2200 on October 24, 2024

Adults in Custody
1,015

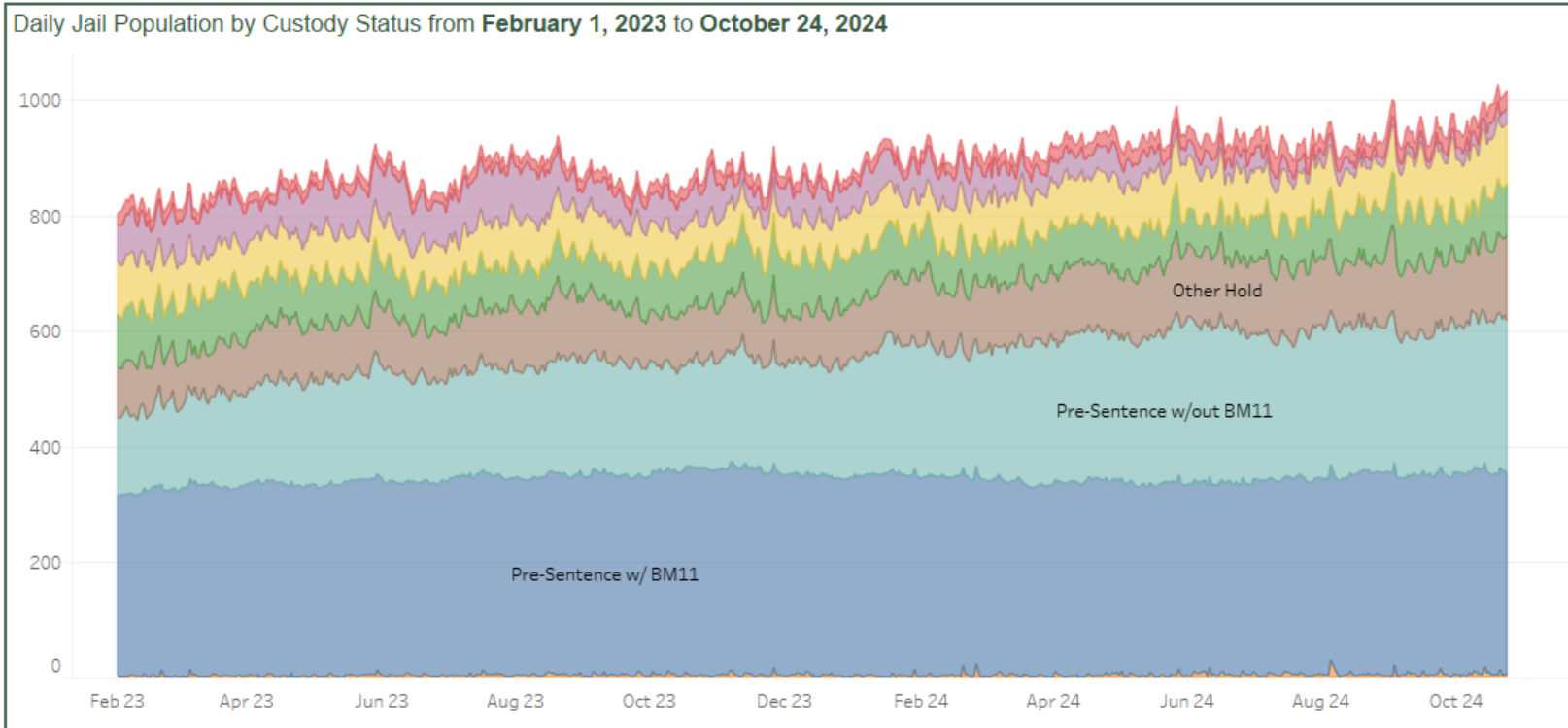
Budgeted Jail Capacity Used
89.8%

Adults in Custody by Custody Type

| | | |
|-----------------|-------------------------|---------------------|
| Pre-Sentence | Pre-Sentence w/ BM11 | 352 (35%) |
| | Pre-Sentence w/out BM11 | 262 (26%) |
| | Total | 614 (60%) |
| Post-Sentence | PV/PPSV Sanction | 103 (10%) |
| | Post-Sentence | 29 (3%) |
| | Pre-Sentence w/ BM11 | 1 (0%) |
| | Total | 133 (13%) |
| Hold | Other Hold | 149 (15%) |
| | PV/PPSV Hold | 89 (9%) |
| | Pre-Sentence w/ BM11 | 5 (0%) |
| | USM Hold | 27 (3%) |
| | Total | 270 (27%) |
| Pending Release | Pending Release | 4 (0%) |
| | Total | 4 (0%) |
| Total | | 1,015 (100%) |



AIC Custody Status



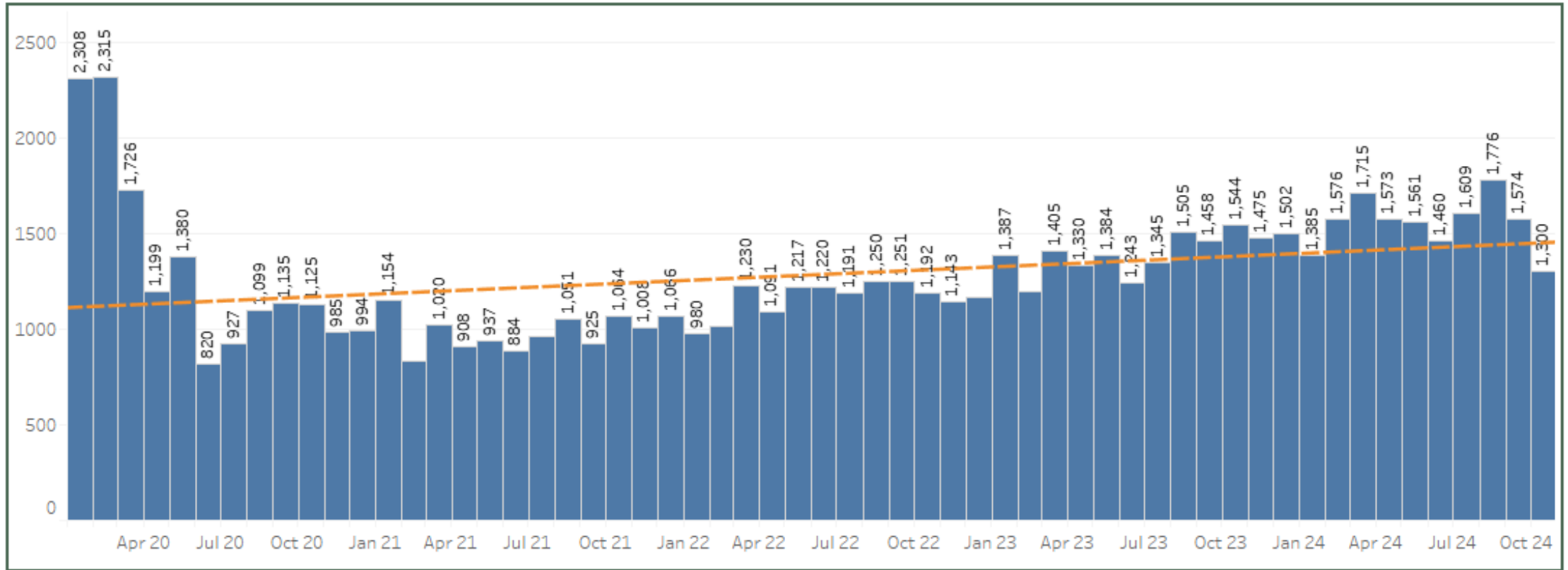
| | | | | | |
|-------------------------|------------|------------|--------------|----------|--------------|
| Post-Sentence | 22 | vs. | 29 | ↗ | 31.8% |
| USM Hold | 61 | vs. | 27 | ↘ | -55.7% |
| PV/PPSV Sanction | 90 | vs. | 103 | ↗ | 14.4% |
| PV/PPSV Hold | 93 | vs. | 89 | ↘ | -4.3% |
| Other Hold | 88 | vs. | 149 | ↗ | 69.3% |
| Pre-Sentence w/out BM11 | 132 | vs. | 262 | ↗ | 98.5% |
| Pre-Sentence w/ BM11 | 312 | vs. | 352 | ↗ | 12.8% |
| Pending Release | 5 | vs. | 4 | ↘ | -20.0% |
| Total | 803 | vs. | 1,015 | ↗ | 26.4% |

- Post-Sentence
- PV/PPSV Hold
- Pre-Sentence w/ BM11
- USM Hold
- Other Hold
- Pending Release
- PV/PPSV Sanction
- Pre-Sentence w/out BM11

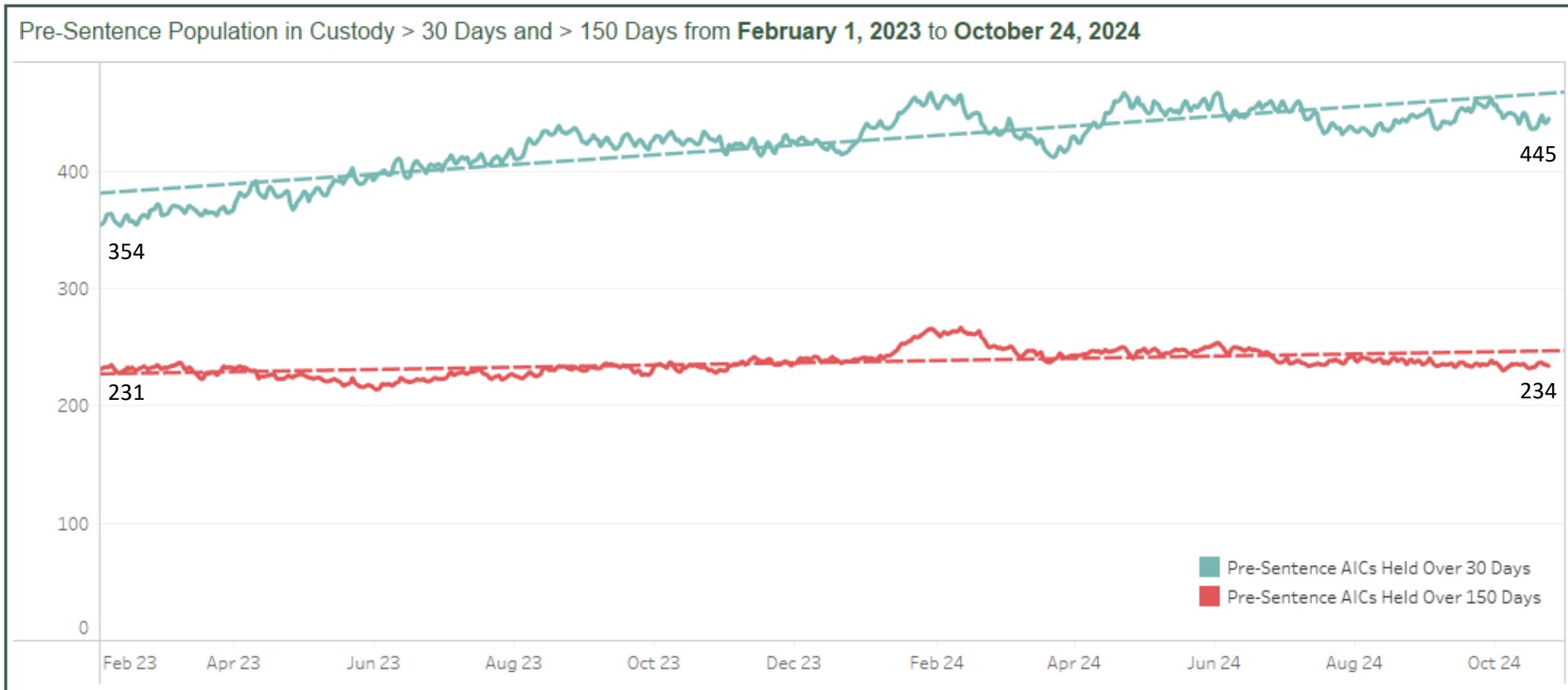


Booking Trends 2020-2024

Standard Bookings by Month from January 1, 2020 to October 24, 2024



Pre-Sentenced Length of Stay



Shared Stakeholder Model

**>90%
Capacity**

- Yellow Alert - Total jail population reaches 90%
- Operational Adjustments
 - Review release eligible adults in custody
 - Review partner “Hold” population in custody



Population Emergency

>95%
Capacity

- Red Alert - Total jail population reaches 95%
- Release adults in custody defined by the Capacity Management Plan
- Limit Booking Criteria



Capacity Management Plan Review Committee

- Workgroup to update the plan
- Present to BOCC for resolution vote



Thank you

