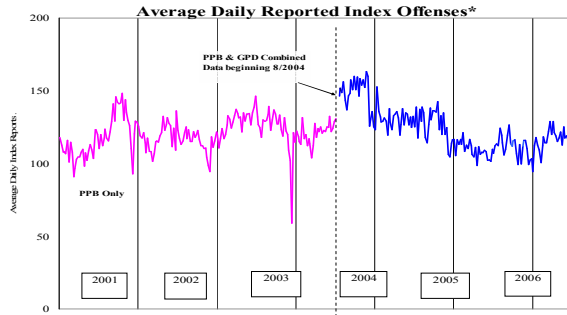


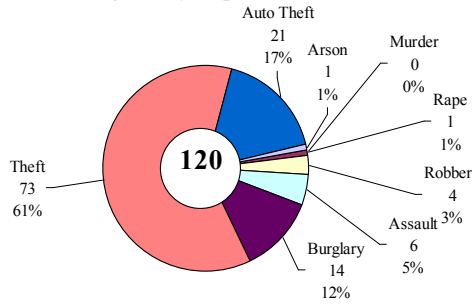
SAFETY PRIORITY BRIEF: JUNE 2007

Multnomah County: Reported Index Offenses



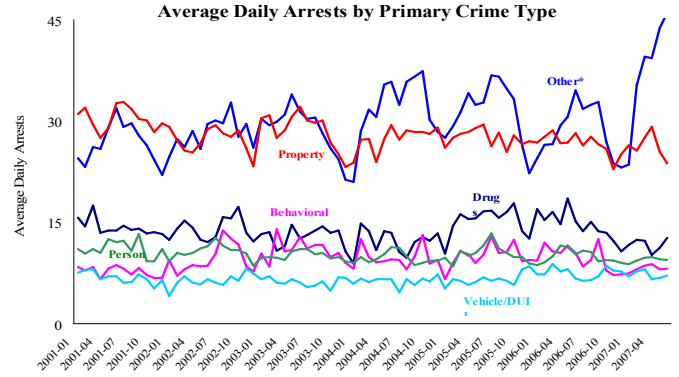
*The graph reflects the combined weekly index offenses data from Portland Police Bureau (PPB) and Gresham Police Dept (GPD), beginning 8/2004 (line in blue). According to LEADS (2005) data PPB and GPD account for 95% of all offenses county-wide. Index offenses account for about half of all reported offenses.

Average Daily Reported Index Offenses*



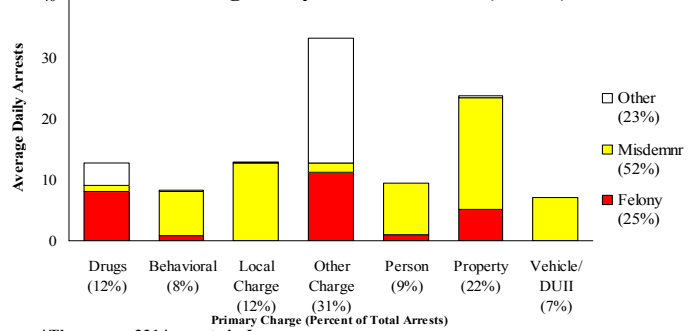
*Portland and Gresham, combined 4-week moving average for the week ending 6-30-07.

Multnomah County: Portland Arrests



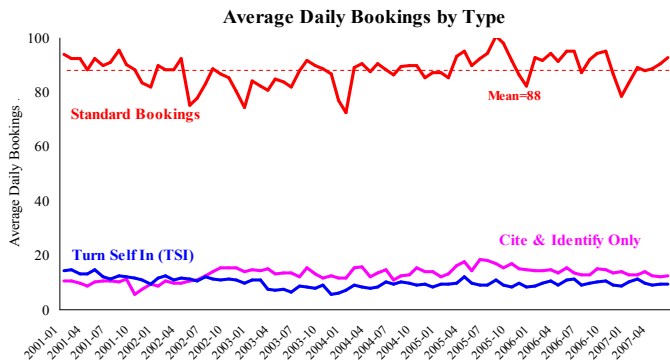
*Other largely reflects fugitive/warrant charges and local ordinances (DEFZ/PFZ). PPB data only, downloaded 7-18-2007.

Average Daily Arrests*: June (n=107)



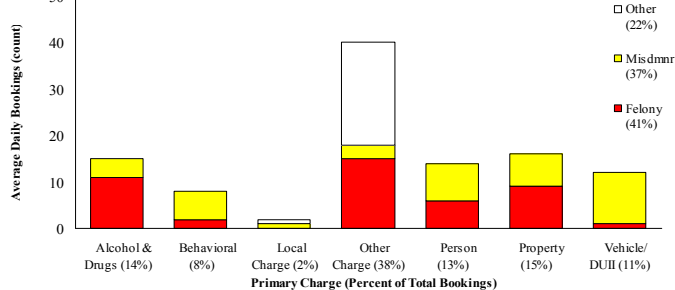
*There were 3214 arrests in June. Local Charges include drug-free and prostitution free zone

Sheriff: Bookings



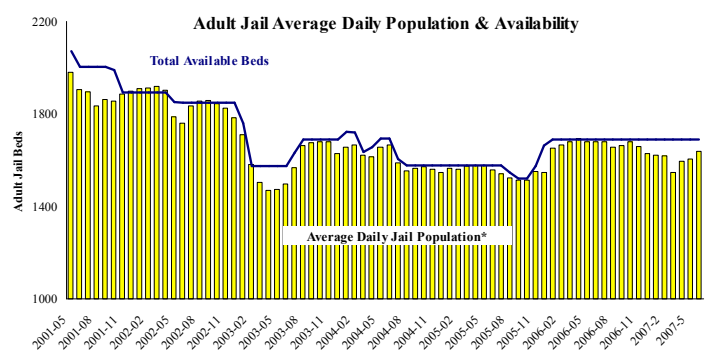
*In-transit bookings are not reported herein and account for ~4% of all bookings. June's average length of stay (ALS) per booking was 16.32 days.

Average Daily Bookings by Severity*: June (n=105)



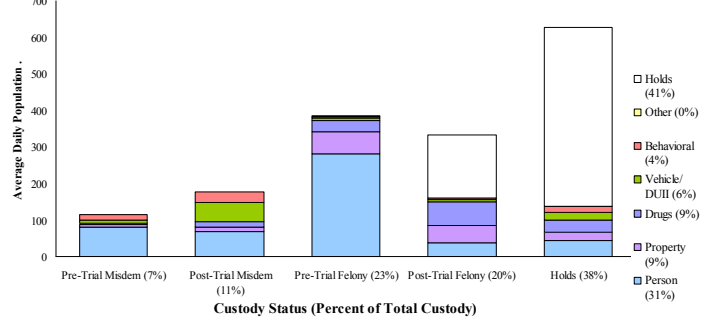
*Excludes Cite & ID. Total of 3157 bookings (105.2/day) through 6/30/07. Corrections Health reported psych-alerts (17.4/day) for the entire month of June.

Sheriff: Custody- Adult Jail Beds



*Excludes in-transit custody classifications. The MCSO reported 159 matrix releases for June 2007.

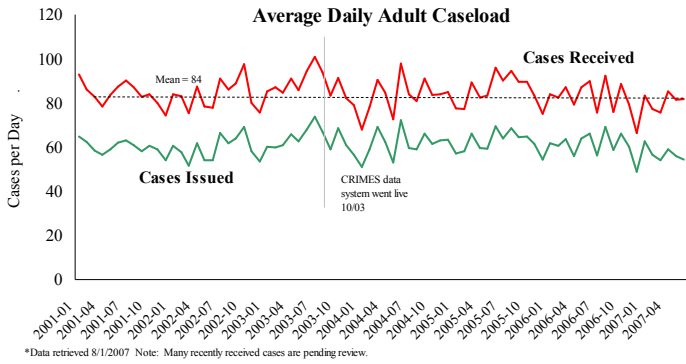
Average Daily Bed Use: June (n=1638)



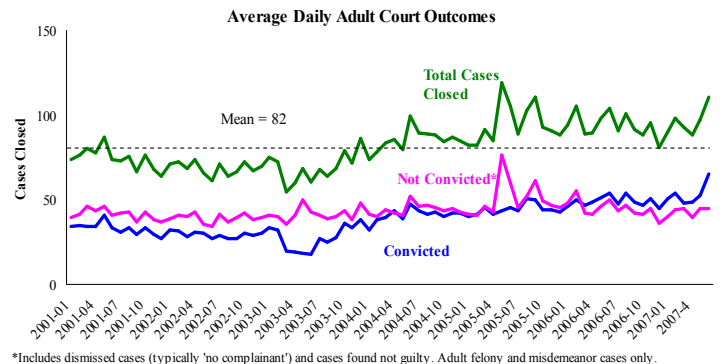
Average Daily Jail System Capacity=1690. Average Daily Population (ADP)=1638; there were 52 available beds on any given day.

Notes: The increase in average daily arrests continues, rising from 104 in May to 107 in June. There was also a significant increase in the Adult Jail Average Daily Population, rising from 1605 to 1638 average daily bed use. This continues an upward trend that started in March. There was an increase in matrix releases, up from 41 in May to 159 in June.

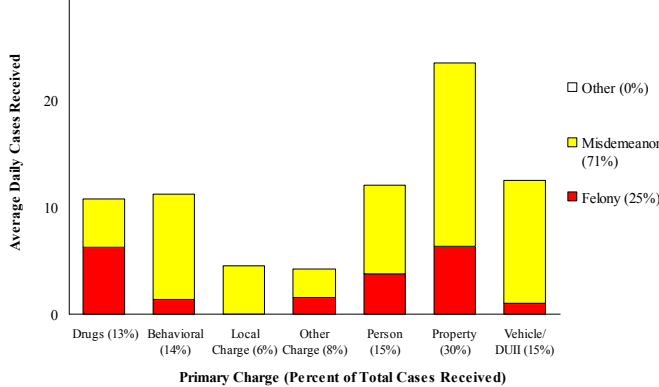
District Attorney: Adult Caseload



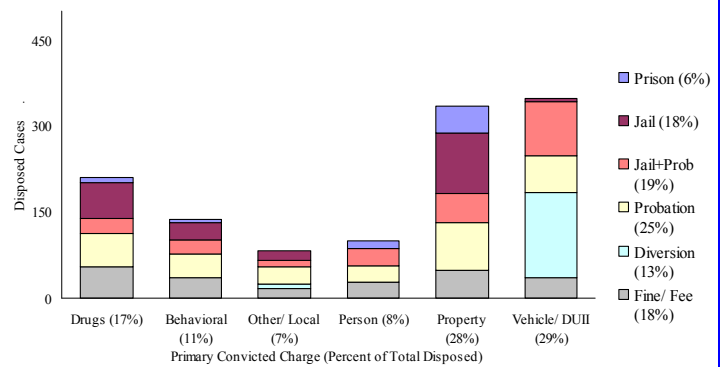
Court Processes: Sentencing Outcomes



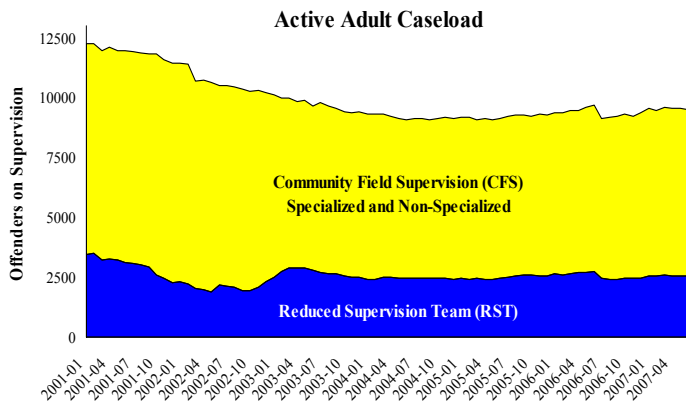
Average Daily Received Cases*: June (n=82)



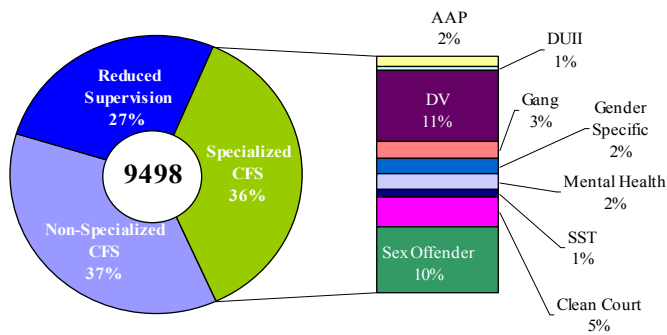
Disposition Type by Primary Conviction*: June 2007



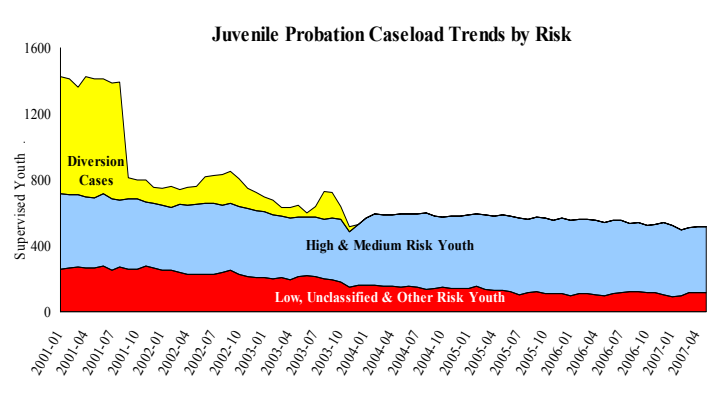
Adult Community Supervision: Caseloads



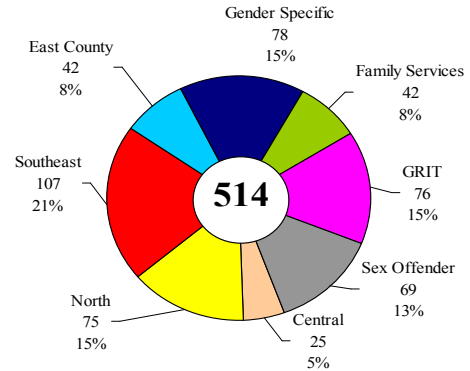
Adult Active Caseload by Type*: June 2007



Juvenile Community Supervision: Caseloads



Juvenile Justice Caseload by Unit*: May 2007



Notes: The Average Daily Adult Court Outcomes continued the rise that began in April. There were 115 more convictions in June than May with 1,961; the percentage of felonies decreased from May however. May saw a slight decrease in the number of both Adult and Juvenile Caseloads.