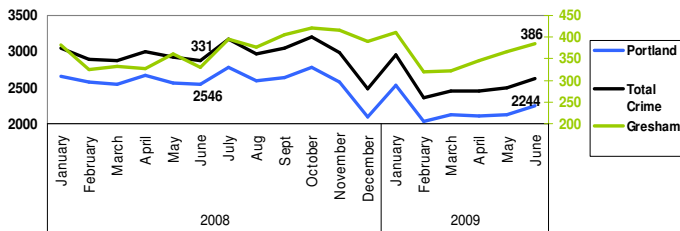


# SAFETY PRIORITY BRIEF: JUNE 2009

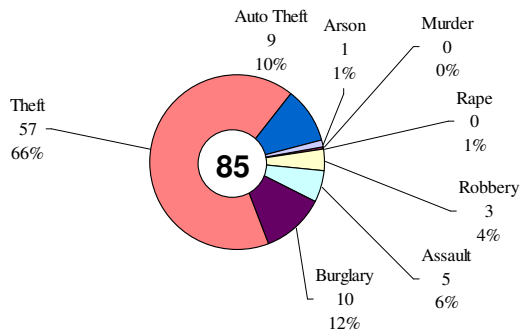
## Multnomah County: Reported Index Offenses

Previous 15 Month Totals of Part I Reported Offenses by City (Highlighting June Months)



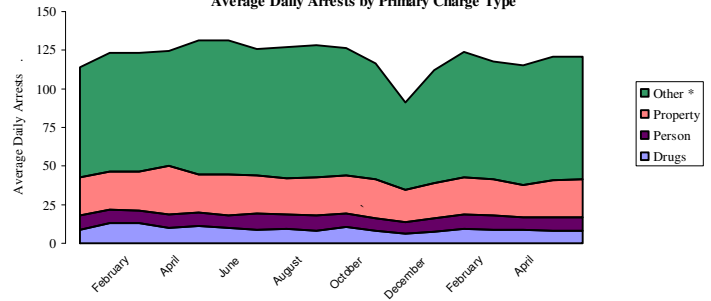
\* Includes data retrieved from PPB and GPD monthly reports, Source: DSS-J, July 20, 2009.

Average Daily Reported Index Offenses\*



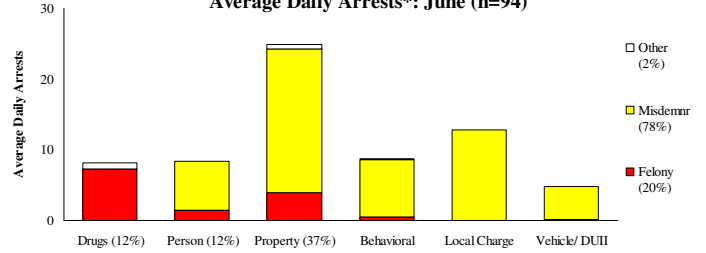
## Multnomah County: Portland Arrests

Average Daily Arrests by Primary Charge Type



\* Fugitive/warrant charges, behavioral and vehicular arrests and violations of local ordinances. PPB data only. Source: DSS-J, July 23rd, 2009.

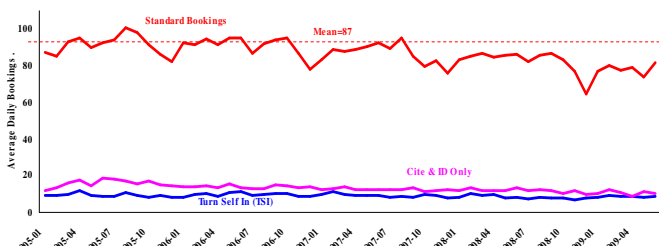
Average Daily Arrests\*: June (n=94)



\* There were 2886 arrests in June. From now on, warrants previously categorized as 'other' will be listed under felony arrests.

## Sheriff: Bookings

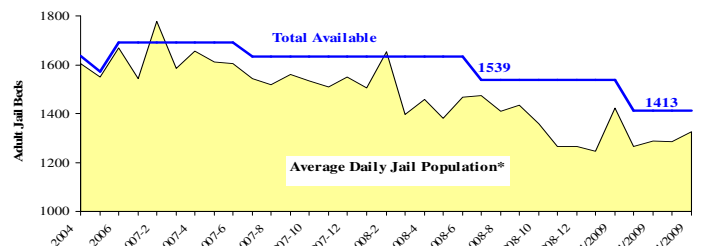
Average Daily Bookings by Type



Source: DSS-J, July 20th, 2009.

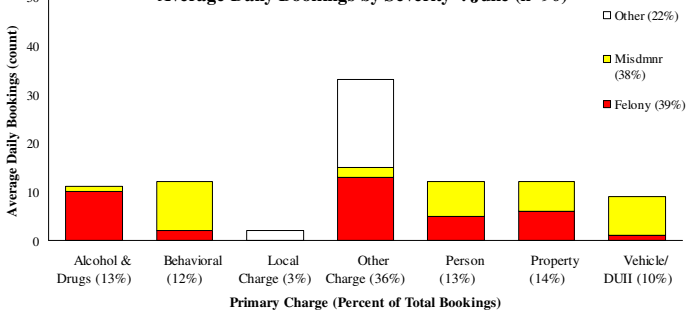
## Sheriff: Custody- Adult Jail Beds

Adult Jail Average Daily Population & Availability



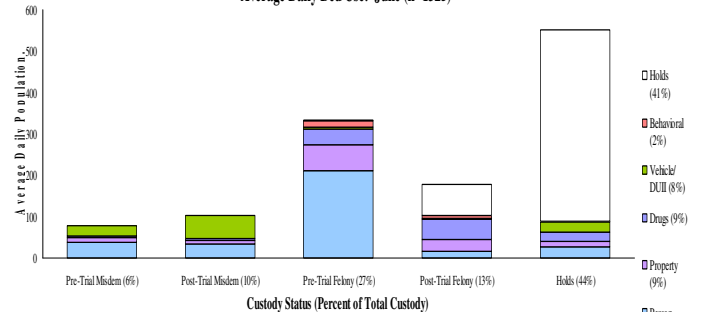
\* Excludes in-transit custody classifications. The MCSO reported 30 matrix releases for June 2009. Source: DSS-J, July 20, 2009.

Average Daily Bookings by Severity\*: June (n=90)



\* Excludes Cite & ID. Total of 2712 bookings (90.4/day) through 06/30/2009. Corrections Health reported 525 psych-arrests (17.5/day) for the entire month of June.

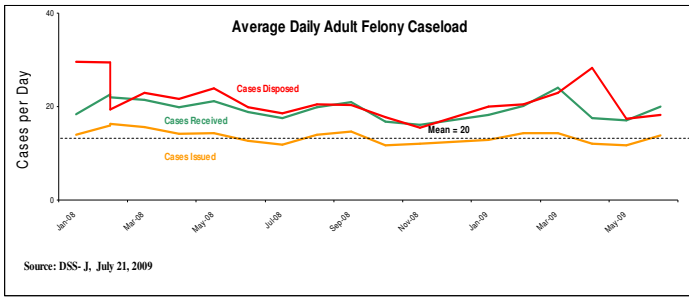
Average Daily Bed Use: June (n=1325)



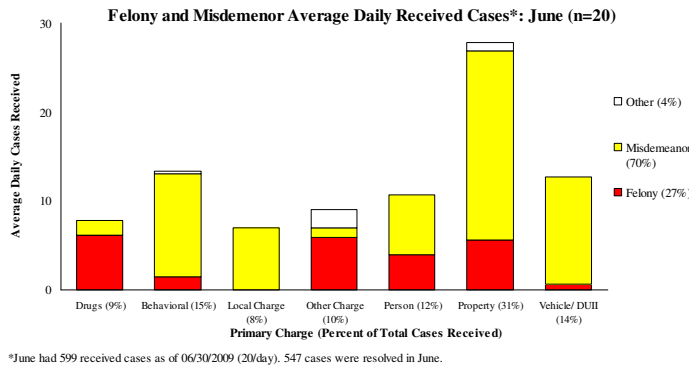
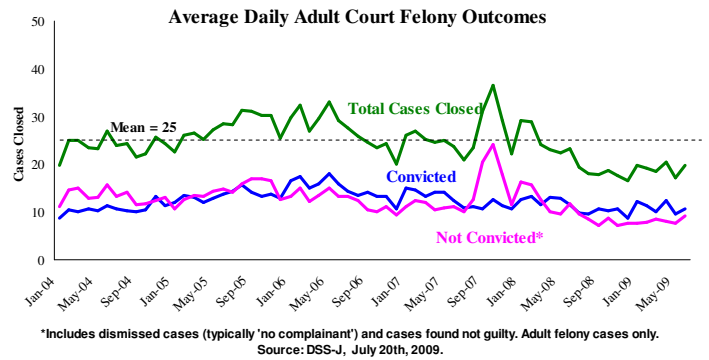
Average Daily Jail System Capacity=1413. Average Daily Population (ADP)=1325 Range =1278 to 1408.

**Notes:** A total of 30 inmates were Matrix released during two events (EPRs) in mid June. The last forced releases occurred in March 2008. While Portland has seen the lowest number of auto theft incidents since 2006, auto theft incidents in Gresham has increased 95% from March to June in 2009 (40 to 72). The average percent of beds utilized increased in June to 93.8%, ranging from 90.4 to 99.6% of capacity. The Average Length of Stay (ALS) increased slightly for June to 15.6 days.

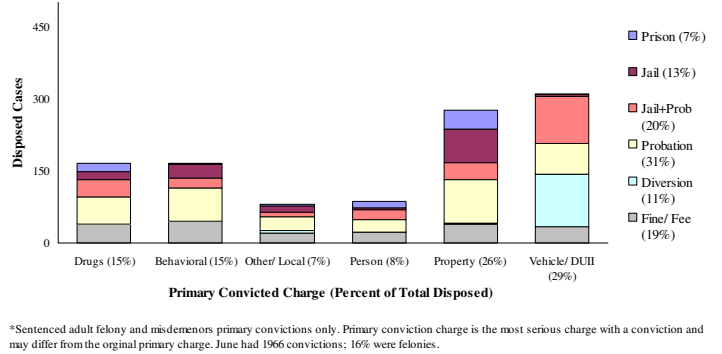
## District Attorney: Adult Felony Caseload



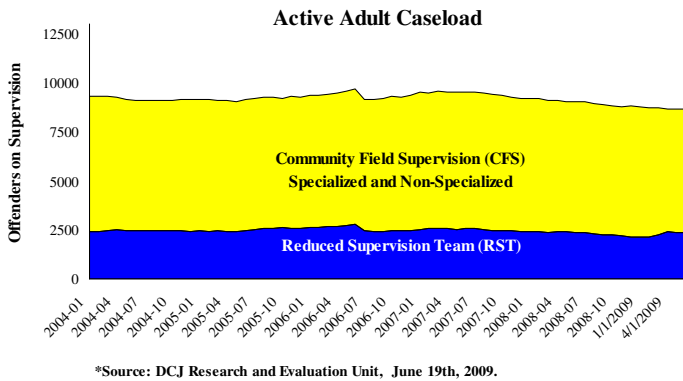
## Court Processes: Sentencing Outcomes



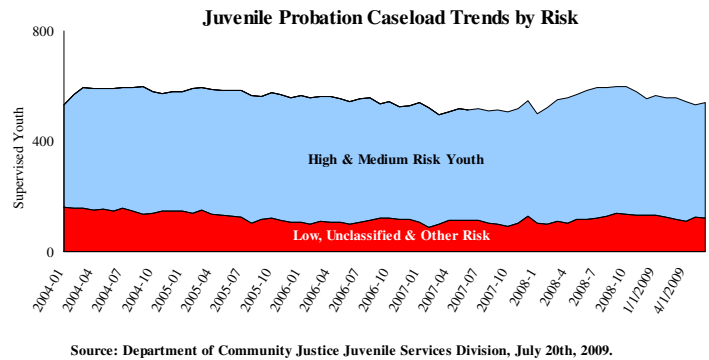
## Felony and Misdemeanor Sentences by Primary Charge\*: June 2009



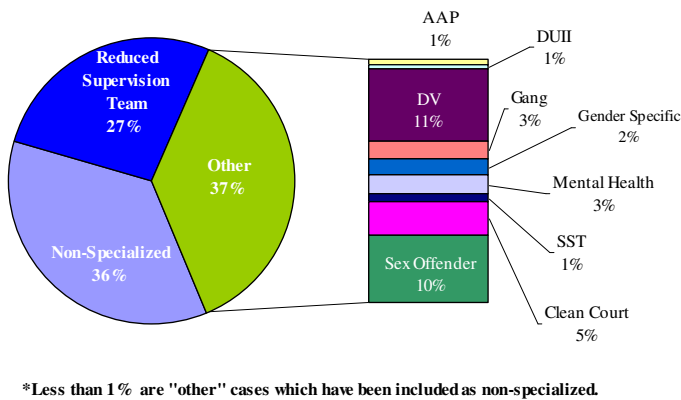
## Adult Community Supervision: Caseloads



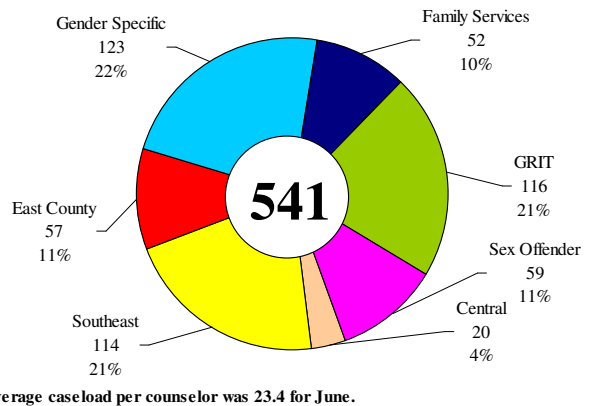
## Juvenile Community Supervision: Caseloads



## Adult Active Caseload by Type\*: June 2009



## Juvenile Justice Caseload by Unit\*: June 2009



**Notes:** There was a slight increase in the average number of cases received and disposed by the District Attorney's Office. In June, the Court handed out 56 fewer sentences for crimes for which the primary charge was vehicle / DUII. The caseloads from the CFS and RST services and the Juvenile Counseling services saw a slight increase in June.