

Multnomah County Voters' Pamphlet

November 5, 2019 Special Election

Dear Multnomah County Voter:

This Voters' Pamphlet is for the November 5, 2019 Special Election and is being mailed to residential households participating in this election.

Here are a few things you should know:

- You can view your registration status at www.oregonvotes.gov/myvote. There you can check or update your voter registration or track your ballot. A registration card is also available on page three in this pamphlet. The voter registration deadline is Oct. 15, 2019.
- Ballots will be mailed beginning on Wednesday, Oct 16, 2019. If you don't receive your ballot by Oct. 24, 2019, please call 503-988-VOTE (8683).
- Only eligible voters that live within the boundaries of the local districts holding elections will receive a ballot. The districts on the ballot are City of Portland, City of Troutdale, Metro, Portland Public School District and Sauvie Island Fire District.
- Remember, if you plan to return your ballot by mail, one first-class stamp is necessary. Postage paid return envelopes will be provided starting in 2020, but for this election, in 2019, a first-class stamp is still required. You can always drop your ballot at an official drop box. Ballots delivered to an official drop box never require postage. multco.us/dropsites
- We've moved our ballot drop box on SE 11th Ave. one block north. Due to impending construction of a new building in our neighborhood, we've moved our 24-hour drop box on the East Side of SE 11th Ave. one block north. It is now located on the East side of SE 11th Ave. between SE Alder St. and SE Morrison St. Look for signs with directions placed around the building. The drop box on the north side of SE Belmont St between SE 10th Ave and SE 11th Ave has not moved.
- Voted ballots MUST be received at any County elections office in Oregon or official drop site location by 8:00 PM, Tuesday, November 5, 2019 to be counted.

This Voters' Pamphlet is on our website: www.mcelections.org. Starting at 8:00 PM on election night, preliminary election results will be posted on our website and updated throughout the evening.

If you have any questions, you can contact our office at 503-988-VOTE (8683).

Sincerely,



Tim Scott, Multnomah County Director of Elections

PLEASE NOTE: Multnomah County Elections prints information as submitted. We do not correct spelling, punctuation, grammar, syntax, errors or inaccurate information.

This pamphlet produced by Multnomah County Elections Division
1040 SE Morrison St., Portland OR | 503-988-3720 | www.mcelections.org

Facts to Know about Voting and Elections

Who can register to vote in Oregon?

- You must be a United States citizen,
- A resident of Oregon,
- And at least 16 years old. You will get your first ballot in the mail once you are at least 18 years old.

You must register to vote at least 21 days before Election Day.

How can I register to vote?

- Online at oregonvotes.gov/register or
- On a paper Oregon Voter Registration Card that can be picked up at an elections office, public library, Oregon DMV, or post office.

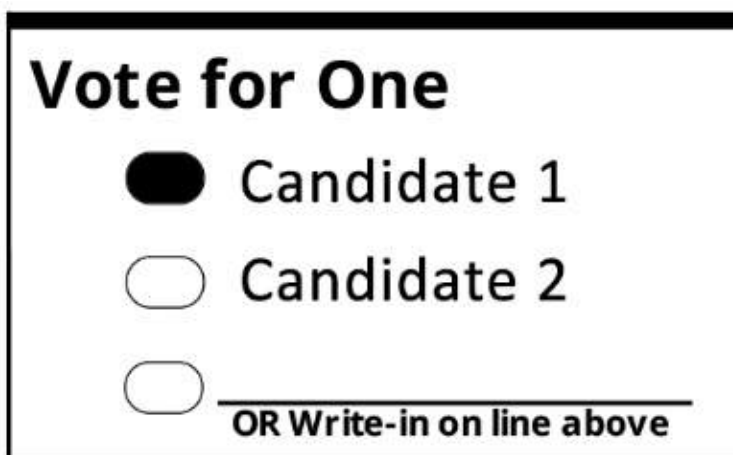
How does vote by mail work?

All elections in Oregon are conducted by the county elections office. The elections office mails ballots directly to voters. Voters complete their ballots, and then return them to the county elections office in the mail or by putting them into an official ballot drop box.

Vote by mail in a few simple steps:

- 1) Register to Vote
- 2) Receive a Voter Notification Card
- 3) Receive a Voters' Pamphlet
- 4) Receive Your Ballot
- 5) Vote Your Ballot
- 6) Return Your Ballot

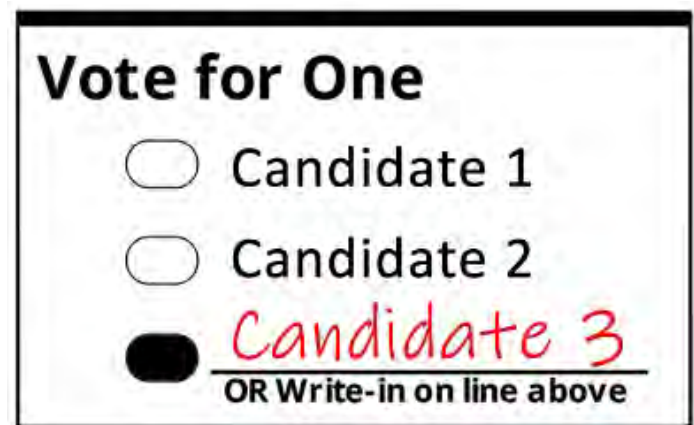
How do I vote my ballot?



Find the candidate or measure response (YES or NO) of your choice. Completely darken the oval to the left of your choice with blue or black ink.

*** Do not use felt tip markers.

Write-in Votes



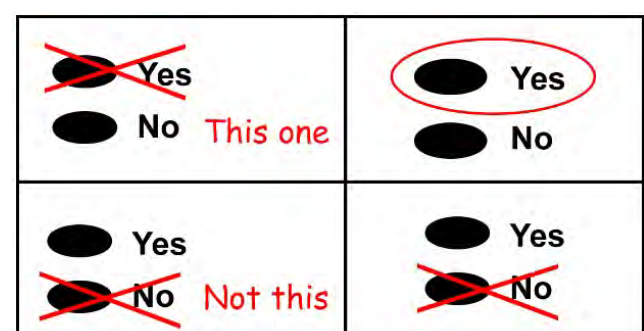
To vote for a write-in candidate who does not appear on the ballot, completely darken the oval to the left of the line provided for the office and write the full name of the candidate on that line.

- Make sure you have correctly marked your choice for each contest.
- Your official ballot may have contests printed on both sides.
- Place the ballot in the return identification envelope. **You may use the optional secrecy sleeve.
- Read the Voter's Statement on the return envelope and sign on the signature line.
- **Your ballot cannot be counted if you do not sign the return envelope.**
- Every signature is checked against the registration signature on file. The signatures must match for the ballot to be counted.

If you vote for more candidates than allowed for an office or if you vote **both** Yes **and** No on a measure, it is called an overvote and your vote **will not count** for that contest.

If you make a mistake or change your mind while marking your ballot,

- You may correct it yourself. See example below.
- **Make your choice obvious** so that your intent is understood and your vote is counted correctly.



- If you are unable to correct your ballot, you may request a replacement ballot from the elections office.

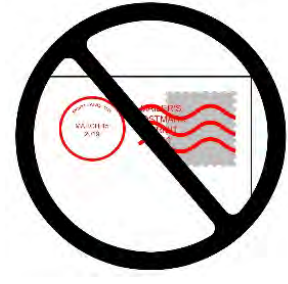
Return Your Ballot



Mail your ballot with a first-class stamp 5 days before Election Day.



Drop off your ballot at an official 24-hour or library drop site.



Postmarks do not count. Your ballot must be returned before 8 PM on Election Day.

24-Hour Drop Box Sites

- **Multnomah County Elections** – 1040 SE Morrison St., Portland
Two drop box locations:
 - East Side of SE 11th Ave. between SE Alder St. & SE Morrison St.
 - North Side of SE Belmont St. between SE 10th Ave. & SE 11th Ave.
- **A-Boy Supply** – 7365 SW Barbur Blvd., Portland
- **Central Library** – 801 SW 10th Ave., Portland, in the outside book return behind the library on SW 11th Ave.
- **Goodwill Store** – 3134 North Lombard St., Portland
- **Gresham Library** – 385 NW Miller Ave., Gresham
- **McDonald's Restaurant** – 2010 NE Cesar Chavez Blvd., Portland (drop box located on west side of NE 40th Avenue between NE Tillamook and NE Hancock and near the Hollywood Library)
- **Midland Library** – 805 SE 122nd Ave., Portland
- **Parkrose Neighborhood** – 4390 NE 102nd Ave., Portland (MHCC Maywood Park Center parking lot)
- **Pioneer Courthouse Square** – 700 block of SW Broadway, Portland (next to Starbucks and across from Nordstrom – **Walk up Only Location**)
- **Regal Cinemas Movie Theater / M & M Car Wash** – SE Division St & SE 165th Ave., Portland – drop box located in Regal Cinemas parking lot behind M & M Car Wash

Library Official Drop Sites

- **Albina Library** – 3605 NE 15th Ave., Portland
 - **Capitol Hill Library** – 10723 SW Capitol Hwy., Portland
 - **Fairview-Columbia Library** – 1520 NE Village St., Fairview
 - **Gregory Heights Library** – 7921 NE Sandy Blvd., Portland
 - **Holgate Library** – 7905 SE Holgate Blvd., Portland
 - **Kenton Library** – 8226 N Denver Ave., Portland
 - **North Portland Library** – 512 N Killingsworth St., Portland
 - **Northwest Library** – 2300 NW Thurman St., Portland
 - **Rockwood Library** – 17917 SE Stark St., Portland
 - **St. Johns Library** – 7510 N Charleston Ave., Portland
 - **Sellwood-Moreland Library** – 7860 SE 13th Ave., Portland
 - **Troutdale Library** – 2451 SW Cherry Park Rd., Troutdale
 - **Woodstock Library** – 6008 SE 49th Ave., Portland
 Mon. – Tue. : Noon – 8PM
 Wed. – Sat. : 10AM – 6PM
 Sun. : Noon – 5PM
-
- **Belmont Library** – 1038 SE César E. Chávez Blvd., Portland
 - **Gresham Library** – 385 NW Miller Ave., Gresham
 - **Hillsdale Library** – 1525 SW Sunset Blvd., Portland
 - **Hollywood Library** – 4040 NE Tillamook St., Portland
 - **Midland Library** – 805 SE 122nd Ave., Portland
 Mon., Fri. & Sat. : 10AM – 6PM
 Tue. : 10AM – 8PM
 Wed. – Thurs. : Noon – 8PM
 Sun. : 10AM – 5PM
-
- **Central Library** – 801 SW 10th Ave., Portland
 Mon. : 10AM – 8PM
 Tue. – Wed. : Noon – 8PM
 Thurs. – Sat. : 10AM – 6PM
 Sun. : 10AM – 5PM

CITY OF PORTLAND

Measure 26-204

Referred to the People by the City Council

BALLOT TITLE

Amends Charter: Increases protections for Bull Run Watershed.

Question: Shall Charter be amended to increase Bull Run Watershed protections by restricting access, regulating allowed activities and limiting land uses?

Summary: The measure adds a new Charter section establishing protections for City lands within the Bull Run Watershed Closure Area, the location of the City's primary drinking water source and hydroelectric facilities. The Charter currently does not protect the Bull Run Watershed. The measure will codify watershed protections in the Charter and, if passed, the protections may only be removed by an affirmative vote of Portlanders.

Protections include:

- Public access restrictions
- Tree-cutting prohibitions
- Land use and activity limits
- Drinking water or hydroelectric projects must avoid and then mitigate impacts to the natural environment

The Bull Run Watershed Closure Area includes the Bull Run Watershed Management Unit— which is jointly managed by the City and the United States Forest Service— and additional land to the west which is managed exclusively by the City. The Bull Run Watershed Closure Area is managed to provide high-quality drinking water for the Portland metropolitan area.

EXPLANATORY STATEMENT

Portland City Council unanimously approved a resolution referring a City Charter amendment to increase protections for the Bull Run Watershed to the Portland voters for the November 5, 2019 ballot. The resolution was sponsored by Commissioner Amanda Fritz, as the Commissioner-in-Charge of the Portland Water Bureau.

If passed, the proposed amendment would add environmental and land-use limitations for the Bull Run Watershed – Portland's primary drinking water source – to the City Charter. The proposed limitations currently exist in City Code, but those limitations can be amended or removed by City Council. The current Charter does not reference the Bull Run Watershed. Because the City Charter can only be amended by Portland voters in an election, the proposed amendment would provide long-term conservation of the Watershed unless Portland voters decide to change the limitations in the future.

The current provisions in City Code proposed to be added to the City Charter would:

- prohibit the public from entering the watershed, with specified exceptions;
- prohibit tree cutting for any purpose not related to the City's drinking water or hydroelectric systems; and
- prohibit transferring City-owned lands or infrastructure to private business or organizations.

If the amendment is not passed, the environmental and land-use limitations for the Bull Run Watershed would continue to exist exclusively in City Code and would be subject to amendment by the City Council.

Submitted by
Amanda Fritz, Commissioner
City of Portland

NO ARGUMENTS IN OPPOSITION TO THIS MEASURE WERE FILED.

CITY OF PORTLAND

Measure 26-204

ARGUMENT IN FAVOR

Keep Bull Run water safe, secure and abundant for future generations

The Bull Run Watershed has been the source of Portland's drinking water for over 100 years. Located in the foothills of Mt. Hood, it provides consistent, high-quality drinking water for Portlanders and hundreds of thousands of Metro-area residents. Your vote for this ballot measure will ensure safe and abundant Bull Run drinking water for generations to come. The future of Portland's water depends on your Yes vote, to make sure the water we love stays accountable to Portland voters.

Currently, Portland City Code provides protections against development and tree-cutting in the watershed that nurtures Bull Run water. But City Code can be changed by a future City Council's vote. The City Charter is Portland's Constitution. If you vote Yes to put today's Code protections for the Bull Run watershed into the City Charter, only Portland voters will be able to allow development or other activities such as tree-cutting in our water source in the future. Only Portland voters will be able to approve a transfer to any private entity of City land or infrastructure within the Bull Run Watershed Closure Area that is integral to the delivery of municipal water.

I was a Registered Nurse working at OHSU for over two decades before Portlanders elected me to serve on your City Council eleven years ago. I know that fresh, pure drinking water is the most basic service Portlanders need. I am only the second woman ever to be the Commissioner in charge of the Portland Water Bureau. I see a huge gap that the Charter has no mention of the Bull Run drinking water supply.

Please join me in voting Yes on this common-sense measure to make sure our drinking water is owned by the people of Portland.

Thank you,

Amanda Fritz

Portland City Commissioner

(This information furnished by Amanda Fritz.)

ARGUMENT IN FAVOR

Please vote **YES** to protect the Bull Run Watershed and Portland's water supply.

The Bull Run Watershed on the Mt. Hood National Forest has been providing pure, high-quality drinking water for the City of Portland since 1895. There is nothing more fundamental to a healthy community than protecting our drinking water.

Measure 26-204 would enshrine protections for lands owned by the City of Portland in the Bull Run Watershed in the Portland City Charter where they could only be changed by Portland voters in a future election. Currently, Bull Run protections on City-owned lands can much more easily be weakened by a simple vote of the City Council.

Securing these protections is essential to protecting not only our drinking water, but also the Bull Run's old growth forests and providing a largely undisturbed refuge for fish and wildlife including threatened salmon populations and northern spotted owls.

Measure 26-204 will ensure that these lands remain largely closed to public access, commercial logging, other land-disturbing activities, and sale to private entities. It will help ensure that this amazing place that provides drinking water for nearly 1 million people will remain protected in perpetuity.

Please vote YES on 26-204 to give the pure water, ancient forests, and fish and wildlife populations of the Bull Run the protection they need and deserve.

Join these leading conservation, community health, and environmental justice organizations in voting YES on 26-204!

Audubon Society of Portland
Center for Sustainable Economy
Oregon Physicians for Social Responsibility
Oregon Wild
Sandy River Watershed Council
Sierra Club, Oregon Chapter
Urban Greenspace Institute
Verde
Wild Salmon Center
Willamette Riverkeeper

(This information furnished by Robert Sallinger, Audubon Society of Portland.)

CITY OF PORTLAND

Measure 26-205

Referred to the People by the City Council

BALLOT TITLE

Amends Charter: Authorizes City participation in emergency mutual aid agreements.

Question: Shall Charter be amended to authorize emergency mutual aid agreements between the City and other government entities, tribes or utilities?

Summary: The measure amends the Charter by clarifying Council authority to enter into and fund mutual aid agreements to provide or receive emergency assistance between the City and other government entities, tribes or utilities following a significant natural disaster or other major disruption to water-related services. Mutual aid agreements permit emergency responders to lend assistance across jurisdictional boundaries when an emergency response exceeds local resources. Mutual aid agreements typically address the furnishing of personnel, equipment or expertise in a specific manner when an emergency occurs.

EXPLANATORY STATEMENT

Portland City Council unanimously approved a resolution referring a City Charter amendment that would authorize City participation in emergency mutual aid agreements to Portland voters for the November 5, 2019 ballot. The resolution was sponsored by Commissioner Amanda Fritz, as the Commissioner-in-Charge of the Portland Water Bureau.

If passed, the amendment would allow City Council to approve and fund agreements between the Water Bureau and other cities, communities, and tribes to provide and receive prompt support during times of emergency like an earthquake. Because emergencies are rare, the cost of mutual aid agreements varies.

If the amendment is not passed, City Council may not be able to provide and receive prompt support from non-local jurisdictions and City Council would pay for any costs associated with mutual aid agreements with local jurisdictions from the General Fund instead of the Water Fund.

Submitted by
Amanda Fritz, Commissioner
City of Portland

NO ARGUMENTS IN OPPOSITION TO THIS MEASURE WERE FILED.

CITY OF PORTLAND

Measure 26-205

ARGUMENT IN FAVOR

After Hurricane Katrina, Portland Water Bureau staff went to New Orleans to offer assistance. It was not only the right thing to do, but also gave our Water Bureau staff valuable real-life experience on how to manage emergencies and provide safe drinking water to community members in desperate need. Astonishingly, a Judge ruled that the City's actions were inappropriate.

When a major earthquake hits Portland, we will need many other jurisdictions to send skilled workers to help us out. We will need local experts with experience working in disaster situations. Your Yes vote on this ballot measure will allow the Portland Water Bureau to enter into agreements with other cities, counties, states, and tribes so that when they need emergency help, our Water Bureau experts will give it – and when we need help, they will be here for us.

Your Yes vote on this ballot measure clarifies that the Portland City Council has your approval to spend Water Funds on mutual aid agreements that allow the Water Bureau to give and receive aid in major disaster emergencies.

In the Resolution referring this question to the ballot, the City Council set Binding City Policy that if this measure is approved by voters, the Portland Water Bureau must report annually to the Council on new mutual aid agreements.

I was a Registered Nurse for 27 years before I was elected to serve as your representative on the City Council. My life has been dedicated to helping people help each other. **Please join me in voting Yes on 26-205.**

- **Common sense.**
- **Wise use of ratepayers' money.**
- **The right thing to do.**

Thank you,

Amanda Fritz

Portland City Commissioner

(This information furnished by Amanda Fritz.)

The printing of these arguments does not constitute an endorsement by Multnomah County, nor does the county warrant the accuracy or truth of any statements made in the arguments.

CITY OF TROUTDALE

Measure 26-202

BALLOT TITLE

City of Troutdale Old City Hall Reconstruction General Obligation Bonds

Question: Shall the City issue up to \$7,300,000 of general obligation bonds to reconstruct the Old City Hall building? If the bonds are approved they will be payable from taxes on property or property ownership that are not subject to the limits of sections 11 and 11b, Article XI of the Oregon Constitution.

Summary: If approved, this measure would finance capital costs to provide a reconstructed Old City Hall building and related improvements. The Old City Hall building is currently owned by the City, located at 104 SE Kibling Avenue.

Measure is expected to finance capital costs to:

- Demolish the existing building additions to excavate and repair the failing original foundation and water infiltration.
- Repair failing beams and other structural members.
- Make other needed repairs and make site improvements to improve ADA building access and designated ADA parking stalls.
- Construct a parking deck on the City parking lot across the street.
- Make other needed repairs and make site improvements.

The Bonds would mature in twenty-one (21) years or less from issuance date and may be issued in one or more series. The bonds are estimated to cost \$0.28 per \$1,000 of assessed property value. For a home assessed at \$200,000, the estimated property tax for the bonds would be \$56.00 per year or \$4.67 per month. Actual rates may vary based upon interest rates and changes in assessed value.

EXPLANATORY STATEMENT

Purpose

Measure 26-202 would authorize the City of Troutdale to issue and sell General Obligation Bonds up to a maximum of \$7,300,000 to reconstruct Old City Hall. The term of the Bonds would not exceed twenty-one (21) years from issuance date and may be issued in one or more series.

Estimated Tax Rate

If the City issues the maximum amount of the Bonds authorized by this Measure, the tax rate is estimated to increase approximately \$0.28 per \$1,000 of assessed value, or about \$28.00 per year for every \$100,000 of assessed value. For a home in Troutdale assessed at \$200,000 the estimated annual increase in property taxes would be approximately \$56.00 per year, or \$4.67 per month. Payment on the bond would begin in fiscal year 2020-2021.

Building Location

The Old City Hall building is located at 104 SE Kibling Avenue and is currently owned by the City. The reconstructed facility would meet some of the current space requirements of City Hall functions.

Background

The Old City Hall building has been at its current location since 1923. The existing building is 96 years old. Based on structural engineering assessments, the building official determined the building was unsafe due to identified serious foundation and structural failings. Internal scaffolding was erected to prevent the failure of a main structural beam in the Council Chambers, and the building was vacated in 2012. City Hall services have been dispersed to multiple locations.

The City Council has considered various assessments, studies, reports and plans received from structural engineers, developers and architectural firms regarding the Old City Hall building. In April 2019 the City Council determined to put the choice of funding the reconstruction of Old City Hall to the voters.

The proposed project is expected to demolish the two existing building additions, from the 1970's and 1980's along the South and East sides of the building, in order to excavate and repair the failing original foundation and water infiltration. Approximate floor space of the demolished additions are expected to be reconstructed. Repairs to the failing beam and other structural members are anticipated. It is anticipated the building would be upgraded to improve support for wind, snow, earthquake, and ice structurally loads, but would not meet the essential facility design standards. The electrical, heating, air conditioning, ventilation and plumbing systems are intended to be replaced. The project is expected to remove some of the already insufficient adjacent parking stalls in order to provide improved ADA building access and designated ADA parking stalls. A parking deck on the City parking lot across the street is also expected to be constructed adding approximately 19 spaces.

Summary

The proposed reconstructed facility would allow some of the prior City Hall departments to return to the building, and be optimized to provide a City Council Chambers and Municipal Court Room, reception and cashier desks, and administrative space for some City staff. FFA Architecture and Interiors, estimates that the reconstructed facility would have a useful life of 20 to 30 years.

Submitted by
Ed Trompke, City Attorney
City of Troutdale

CITY OF TROUTDALE

Measure 26-202

ARGUMENT IN FAVOR

Just as important as saving Edgefield was 30 years ago, or preserving the Historic Columbia River Highway, we have never gone wrong saving our history.

History

It was in City Hall that the battle to preserve Edgefield played out and history was saved. With simple grange-style architecture, it is the last original city hall in East Multnomah County. Built by the community, it is where local government took place, court was held, and where we voted. It hosted union meetings and dances, laughter, arguments, and some nights, incredible boredom. Gradually city offices needed more space leaving only a bit of old dance floor intact in Council Chambers.

In 2012, the historic Hall was evacuated due to structural damage discovered from a fire decades earlier. Since 2012, the city has spent over half a million dollars renting office space.

Measure 26-202

A “Yes” vote will restore the historic building to meet today’s building and earthquake standards. Administrative functions and Council Chambers would return “home” to the historic, modernized Hall.

A “No” vote will continue to rent space costing approximately \$75,000 annually and pursuing a new, more expensive building later.

Our opinion

We believe the measure Troutdale City Council has placed before voters is the best option. We already own the site, parking lot, and adjacent property. This bond will preserve an historic building with a rich history and enhance our small town charm.

Restoration:

- is the most cost effective option;
- eliminates paying rent;
- returns administrative functions from 6000sf rented space to our 8800sf historic Hall;
- eliminates the need to propose a new, more expensive City Hall later;
- adds 19 parking spaces/fulfills ADA requirements;
- restores life to the east end of downtown;
- provides option to expand on adjoining city property;
- may qualify for Historic Landmark status and grants.

A “Yes” vote supports history, enhances our charming downtown, and is the most cost effective solution for a permanent, and historic City Hall.

Erin Janssens, President

Troutdale Historical Society

(This information furnished by Erin Janssens, Troutdale Historical Society.)

ARGUMENT IN FAVOR

Measure 26-202 Restores Troutdale's Old City Hall – It preserves our history and saves money! Please VOTE YES.

As your city councilor, I have always favored returning Old City Hall to its original function. Troutdale already owns the building and land, and also owns adjacent land for future building expansion. Restoring Old City Hall has always been the least expensive option, compared with building new.

The Old City Hall building was originally built to be Troutdale's city hall and was a friendly, charming, adequate city hall for over 85 years. Other than some minor additions, little was spent on the structure during all those years. Once refurbished, and with normal maintenance, it will continue to serve Troutdale for another century.

The Hall was vacated in 2012 because roof trusses were failing and the city has since been renting office space, at increasing cost.

Troutdale government needs to return to a city-owned city hall. The best, and by far the least expensive way to do that is to refurbish our Old City Hall building, which is what Measure 26-202 does. The bond will update the building's mechanical and IT systems to serve in the 21st century as a comfortable working space for our great city staff and officials to interact with citizens. It also makes the Hall fully ADA-compliant.

Let's save this piece of Troutdale history and return City Hall to the use it was built for. It will save taxpayers every year by reducing or eliminating the need to rent office space for city personnel.

Old City Hall was built as a community effort by Troutdale's citizens. It has character. It has history. Old City Hall is a symbol of what is best about Troutdale.

Vote YES on Measure 26-202.

David Ripma
Troutdale City Councilor

(This information furnished by David Ripma.)

ARGUMENT IN OPPOSITION

One of the arguments in favor of restoring Old City Hall has been that it eliminates the expense of currently leased office space. According to the 2019-2020 City budget, a combined total of \$62,440 has been allocated for that cost for the year. The estimated cost of a bond to the taxpayers is in the range of \$400,000-\$500,000 per year, for twenty-one years.

In a staff report presented to Council on 3/14/19, FFA Architecture and Interiors "estimates that the reconstructed facility would have a useful life of 20-30 years." How many of you would sign onto a mortgage which foresaw your home having reached the end of its useful life at the same time that the mortgage was being paid off?

The estimated bond cost is \$0.28 per \$1,000 of assessed property value, or \$56.00 per year for a property assessed at \$200,000. While about \$1.00 per week might seem like a minimal amount, keep in mind that the tax burden will apply to the property for twenty-one years, exceeding \$1,000 total before it has been paid off. Also, there is no

guarantee that the entire project will be completed for the requested bond amount. The City would have to cover any cost over-runs.

The other major argument for the restoration is that it will allow “some” staff consolidation in a single location. While this would be the immediate effect, the proposed structure would be marginally adequate from a space-needs standpoint. While all inter-related staff should ideally be in a single location, having staff dispersed should not present insurmountable obstacles with all the digital forms of communication now available. Staff has managed successfully since 2012 under the current arrangement.

Is it worth this amount of taxpayer funds to refurbish a nearly 100-year-old, wood-frame building?

I strongly recommend a NO vote on Measure 26-202, as the proposal is not fiscally responsible.

(This information furnished by Paul J. Wilcox.)

The printing of these arguments does not constitute an endorsement by Multnomah County, nor does the county warrant the accuracy or truth of any statements made in the arguments.

METRO

Measure 26-204

Referred to the People of the Metro Region by the Metro Council

BALLOT TITLE

Bonds to protect water quality, fish, wildlife habitat, natural areas

Question: Shall Metro protect clean water, natural areas, access to parks and nature; issue bonds estimated to maintain current tax rate?

If the bonds are approved, they will be payable from taxes on property or property ownership that are not subject to the limits of sections 11 and 11b, Article XI of the Oregon Constitution.

Summary: If passed, the measure would:

- Authorize \$475 million in general obligation bonds to continue regional programs to protect and improve water quality in local rivers and streams, and help salmon and other native fish.
- Protect headwaters of local rivers like the Willamette, Tualatin and Clackamas, wildlife habitat, and natural areas. Restore wetlands to control flooding.
- Fund local water quality, wildlife habitat, trail, and park maintenance projects, and large-scale community nature access projects.
- Continue Nature in Neighborhoods grants to protect and connect people and nature.
- Maintain Metro’s parks, including Oxbow and Blue Lake, and make these parks and natural areas safer, more accessible and welcoming, especially for low-income families and communities of color.

Due to previous bonds retiring, this program is not expected to increase tax rates. Requires community oversight committee; yearly independent financial audits. Bond costs estimated at \$0.19 per \$1,000 of assessed value annually, approximately \$4.00/month for the average homeowner. Actual costs may differ. Bonds may be issued in multiple series and mature in no more than 30 years.

EXPLANATORY STATEMENT

Background

Parks and natural areas set greater Portland apart from other metropolitan regions. Over the past quarter-century, the region's voters have approved two bond measures that allowed Metro to create a regional system of parks and natural areas that protects water quality, restores fish and wildlife habitat, and provides people with access to nature. With voters' support, Metro has worked with partners to purchase land from willing sellers, restore local streams and wetlands to improve the health of native fish, plants and wildlife, and supported hundreds of local and community projects. Today, Metro manages more than 17,000 acres of parks, trails and natural areas across greater Portland, spanning the region from Cornelius to Oregon City to Gresham.

The Portland region's natural areas and parks are experiencing increased pressure from population growth. High-quality habitat for fish and wildlife is threatened, while demand for existing parks and natural areas grows. Scientists predict that the impacts of population growth will be compounded by more heat waves and extreme weather events affecting human and natural communities far into the future. Metro's previous parks and nature bonds, approved by voters in 1995 and 2006, are reaching the conclusion of their planned investments.

Use of funds

This measure would authorize Metro to issue \$475 million in general obligation bonds to continue regional investments that improve water quality in local rivers and streams and restore fish and wildlife habitat by protecting land along the Clackamas, Tualatin and Sandy rivers and Johnson, Fanno, Beaver, Newell and other creeks. Bond funds would protect salmon, trout, steelhead and lamprey, help prevent flooding in urban areas and protect and restore culturally significant plant communities.

Bond projects would increase access to nature for people in the Metro region, which includes Washington, Clackamas and Multnomah counties. Metro would distribute funds to cities, counties and other local park providers across greater Portland for local water quality, wildlife habitat and park capital maintenance projects, as well as provide funding for community-led Nature in Neighborhoods grants, regional trails and large-scale nature projects that also address community issues such as jobs, housing and transportation. Bond funds would be used to maintain regional parks, including Oxbow and Blue Lake, by updating infrastructure and increasing opportunities for low-income families and communities of color to connect with nature close to home.

If passed, what would the bond cost?

Due to previous bonds retiring, this program is not expected to increase tax rates. If voters approve the bond measure, Metro estimates that it would maintain the current tax rate of \$0.19 per \$1,000 of assessed value annually – about \$4 a month for a home assessed at \$250,000. Actual rates may differ based upon changes in assessed values and interest rates incurred.

Accountability

An independent community oversight committee would review bond expenditures and provide annual reports. An independent public accounting firm would perform an annual financial audit of the expenditure of bond funds.

Submitted by
Andrew Scott, Interim Chief Operating Officer
Metro

METRO

Measure 26-203

ARGUMENT IN FAVOR

Renew our commitment to protecting the water, open spaces, and parks across our growing, diverse region!

Voters across our region have consistently approved funding measures to support regional parks, trails and natural areas. **Measure 26-203 renews this commitment without raising taxes.** Vote YES today!

A Record of Success

This measure expands upon Metro's successful track record preserving and managing over 17,000 acres of regional parks, trails and natural areas. It also provides funding for local parks and nature projects in communities throughout the region.

Developed With Community Guidance

Consistent with Metro's commitment to racial equity, diversity and inclusion, this measure was developed with extensive input from communities throughout Clackamas, Multnomah and Washington counties.

Measure 26-203 Priorities

- **Land purchase and restoration:** Improve fish and wildlife habitat, improve water quality and restore key natural areas.
- **Metro park improvements:** Complete parks such as Chehalem Ridge in Washington County, increase access for people with disabilities and improve facilities in parks such as Oxbow and Blue Lake.
- **Nature in Neighborhoods grants:** Community-based projects to expand equity and access to outdoor recreation
- **Local parks and nature projects:** Money will be given/dispersed to cities, counties and park providers across all three counties to purchase and protect vital land, restore fish and wildlife habitat, and build and maintain parks.
- **Walking and biking trails:** Build new trails and construct missing sections, creating a regional network of walking and biking paths.
- **Transformative community projects:** Funding for public projects that address conservation as well as jobs, housing and transportation, like Willamette Falls in downtown Oregon City.

Let's renew our commitment to parks and open spaces, water quality, and improved access for all people! Please vote Yes!

Please Join us in Supporting Measure 26-203!

Portland Business Alliance
The Main Street Alliance
AFSCME 3580
The Intertwine Alliance
The Street Trust
Metro President Lynn Peterson
Asian Pacific American Network of Oregon (APANO)
Susan Harnett Oregon Zoo Bond Citizens Oversight Committee Chair
Mitchell Hornecker Metro Housing Bond Oversight Committee Member
And many more!

(This information furnished by Elisabeth Swarttouw, Nature for All.)

ARGUMENT IN FAVOR

Nature for All Measure Brings Meaningful Benefits to Our Communities

The health and well-being of our communities and the natural world are of utmost importance. These values are more important than individual profit and should be supported through equitable distribution of resources. As organizations rooted in and dedicated to the communities we serve, we recognize and elevate this belief as we support the Nature for All Measure.

This bond measure builds upon the spirit of conservation and preservation and envisions our region through the lens of racial equity. This focus brings more concrete benefits to underserved communities, including communities of color and low-income residents. It centers human connections, not just natural ecology, while bringing real improvements to our neighborhoods.

Previous park measures had noble goals, but amenities were not always accessible for everyone. They were often on the outskirts of the region and typically inaccessible by public transit. For many, these areas exist as places on a map but not places you can actually go. We need investments in spaces that are important to communities of color, tribal communities and low-income communities.

In recent years, a growing body of evidence suggests that the ZIP code where you live is the strongest indicator of health outcomes, including your life expectancy. Many underserved communities live in neighborhoods deficient in safe, healthy, green places to play, live, and gather. These disparities add up over a lifetime, hurting our health and undermining our belief in fairness.

Through this measure, our communities will see local parks and natural areas — the things that make our region an amazing place to live. We can be proud of passing a measure that will improve the day-to-day lives of hundreds of thousands of local residents while also building ecological resilience.

Vote Yes on Nature for All!

Signed,
Asian Pacific American Network of Oregon (APANO)
East County Rising
OPAL Environmental Justice Oregon

(This information furnished by Elisabeth Swarttouw, Nature for All.)

ARGUMENT IN FAVOR

**Water Quality and Climate Advocates Agree: Vote YES on Measure 26-203!
Protect and enhance our region's water quality, habitat, and natural areas.**

Everyone deserves access to safe, clean water. Developed with guidance from a diverse coalition of community members from Clackamas, Multnomah, and Washington County, Measure 26-203 builds upon Metro's successful track record of exercising responsible, strategic fiscal management to preserve and secure regional rivers, wetlands, parks, trails, and natural areas, **without raising taxes**. By preserving these critical resources we are ensuring our water—in the Willamette, Clackamas, and Tualatin rivers, including important headwaters, local streams and wetlands—is healthy and accessible to all.

Funds from this measure are specifically allocated to projects that reduce the impacts of climate change and increase acquisition and access including historically underserved communities of color. By purchasing land for preservation and restoration in parts of our region that currently have few public parks or green spaces, Metro will be able to protect key natural areas, improve fish and wildlife habitat, and advance equity by removing barriers that prevent individuals from accessing parks and nature, allowing everyone to feel welcome and have safe, fun experiences outdoors.

Voters across our region have consistently approved funding measures to support regional parks, trails, and natural areas. A YES vote on Measure 26-203 renews our commitment to parks and open spaces, water quality, and improved access for all people, and provides the necessary funding for public projects that address conservation as well as jobs, housing, and transportation, like Willamette Falls in downtown Oregon City.

Please Join us in Supporting Measure 26-203!

Portland Audubon Society
The Nature Conservancy
Oregon League of Conservation Voters
Depave
Urban Greenspaces Institute
The Sierra Club
1000 Friends of Oregon
Metro President Lynn Peterson
Metro Councilor Juan Carlos Gonzalez
Metro Councilor Christine Lewis
Metro Councilor Shirley Craddick
Metro Councilor Bob Stacey
Metro Councilor Sam Chase
Metro Councilor Craig Dirksen

And many more!

Vote YES today!

(This information furnished by Elisabeth Swarttouw, Nature for All.)

ARGUMENT IN FAVOR

La iniciativa de ley Nature for All aporta beneficios significativos para nuestras Comunidades

La salud y el bienestar de nuestras comunidades y del mundo natural son de máxima importancia. Estos valores son más importantes que el beneficio individual y deben apoyarse a través de la distribución equitativa. Como organizaciones arraigadas en las comunidades donde servimos y dedicadas a ellas, reconocemos y elevamos esta creencia al apoyar la iniciativa de ley Nature for All (Naturaleza para todos).

Esta iniciativa de ley de emisión de bonos se respalda en el espíritu de conservación y preservación y visualiza a nuestra región con un lente de equidad racial. Este enfoque ofrece beneficios a las comunidades desfavorecidas, incluidas las comunidades de color y los residentes con bajos ingresos. Se centra en las conexiones humanas, no tan solo en la ecología natural.

Las iniciativas de ley de parques anteriores tenían objetivos nobles, pero las instalaciones no siempre eran accesibles para todos. Para muchas personas, estas áreas existen como lugares en un mapa, pero no como lugares donde realmente se pueda ir. Necesitamos inversiones para las comunidades de color, tribales y comunidades de bajo ingresos.

Un creciente conjunto de pruebas sugiere que el código postal donde uno vive es el indicador más firme de los resultados de salud, y expectativa de vida. Muchas comunidades desfavorecidas viven en vecindarios que tienen deficiencia de lugares verdes, sanos para jugar, y reunirse. Estas disparidades se acumulan durante la vida, perjudican la salud y menoscaban nuestra creencia en la equidad.

A través de esta iniciativa de ley, nuestras comunidades verán parques y áreas naturales, estos son las cosas que hacen nuestra región un lugar maravilloso. Podemos estar orgullosos de aprobar una iniciativa de ley que mejorará la vida de cientos de miles de residentes y, también construirá resiliencia ecológica.

Vote Sí por Nature for All.

Firmado por:
Asian Pacific American Network of Oregon (APANO)
East County Rising
OPAL Environmental Justice Oregon
Unite Oregon
Verde

(This information furnished by Elisabeth Swarttouw, Nature for All.)

ARGUMENT IN FAVOR

“一人一自然”法案能对我们的社群带来无限好处

我们社群的健康福祉和自然生态至高重要。这些价值比起个人利益更加重要,并且应该藉由资源 公平分发作为支持。随着各种组织深根并致力于我们的社群,我们逐渐认知到这项信念并且藉由 支持“一人一自然”提升这项信念。

这项法案建构在环保和保育的精神之上,并利用种族平等的视野展望我们的区域。我们的专注能 替弱势族群,包含有色群体及低收入群体,带来更多实质益处。此法案作为中心的不仅仅是自然 生态,更是人与人的连结,并同时为我们的社区带来真正的进步。

先前的公园法案确实有着崇高的目标,但并非所有人都能随时使用到设施,因为它们大部分时候 都设在郊区、且无法通过大众交通工具到达。对很多人来说,这些地方只是“地图一隅”而不是“会去的地方”。我们需要在对有色群体、部落群体及低收入群体等较具重要性的地方进行投 资。 近年来,有越来越多的证据显示,您所属的邮递区号是您的健康状况(包含预期寿命)的最佳指 标。许多弱势群体都居住在没有足够安全健康的绿地可以玩耍、居住甚至是聚会。这些差距将不断累积,对我们的健康造成影响,并且破坏我们对平等的信念。

藉由这项法案,我们的社区将会开始有小区公园和绿地——能让我们的生活环境越发舒适的要素。我们将以通过了一项改善成千上万居民的居住环境的法案为傲,也将以复原生态系为傲。

请同意“一人一自然”法案!

签字,

Asian Pacific American Network of Oregon (APANO)
East County Rising
OPAL Environmental Justice Oregon
Unite Oregon Verde

(This information furnished by Elisabeth Swarttouw, Nature for All.)

ARGUMENT IN FAVOR

The Nature Conservancy urges a YES vote on Measure #26-203 Nature for All

Measure 26-203 seeks to renew the regionwide Metro bond is designed to ensure all residents have access to clean air, clean water, and beautiful parks within our cities and across the region. The Nature Conservancy is committed to conserving the lands and waters on which all life depends. This measure would do just that.

Without raising taxes, this measure will:

- Preserve our region's water quality—from the Willamette, Clackamas, and Tualatin rivers, to important headwaters, and local streams and wetlands;
- Protect forests, open spaces, and areas at risk from development that are important for wildlife habitat, recreation, and needed to safeguard our air and water;
- Ensure all kids—regardless of zip code or income—have great places to play by improving access to regional parks and in communities across the Metro region to better serve our growing, diverse populations.

The Nature Conservancy participated in a comprehensive community engagement process led by Metro, with decisions grounded in science, underscoring the importance of building resilience to a changing climate, and in the interests of every Metro region resident in Multnomah, Washington and Clackamas counties. The process creates a

level of accountability in the investments and priorities of the measure. This measure represents a bold vision for nature and people in the Portland Metropolitan Area and one that aligns well with The Nature Conservancy's mission and values.

Jim Desmond and Charles Wilhoite
State Director and Chair, Board of Trustees
The Nature Conservancy in Oregon

Sponsored by Nature for All

(This information furnished by Elisabeth Swarttouw, Nature for All.)

ARGUMENT IN FAVOR

Vote YES on 26-203!

Support Parks and Nature Projects in Multnomah County Without Raising Taxes

Join us in voting YES to renew Metro's parks and nature bond measure. Together we can preserve our region's water quality; protect forests, open spaces, and areas at risk from development that are critical for wildlife habitat and recreation. We can also safeguard our air and water; and ensure access to nature and parks for communities of color.

Multnomah County Deliverables

- **New Parks and Park Improvements.** If passed, Measure 26-203 will bring nearly \$40-million to Multnomah County specifically for parks and nature projects. Those funds will go directly to help build new parks and maintain existing parks, conservation areas, and hiking and biking trails that connect neighborhoods across the region to economic centers.
- **Acquisition and protection of Multnomah County Lands.** Measure 26-203 will protect these local wetlands, habitats, and open spaces, ensuring they are safe and accessible for generations to come:
 - Beaver Creek
 - Sandy River - upper and lower sections
 - East Buttes of Gresham
 - East Buttes of Portland
 - Forest Park habitat connections
 - Johnson Creek headwaters and floodplain
 - Multnomah Channel and its headwaters
 - And many more!
- **Access to \$40-million through Nature in Neighborhood capital grants** for locally-identified projects in Clackamas, Washington, and Multnomah County to provide new parks, park improvements, and increased access to nature.

Join neighbors and AFSCME 3580 members across Multnomah County in Voting YES!

Please join us in protecting rivers and wetlands, habitat and open space, and ensuring access to nature for all by voting YES on Measure 26-203 today.

Punneh Abdolhosseini
Olena Turnla
Ted Reid

Laura Garue
Katie Hentges
Ann Toledo
Marne Duke
Robert Spurlock
Diego Gloseffi
Melanie Reinert
Katherine Anne Weil
State Representative Rob Nosse

(This information furnished by Elisabeth Swarttouw, Nature for All.)

ARGUMENT IN FAVOR

The Nature Conservancy urges a YES vote on Measure #26-203 Nature for All

Measure 26-203 seeks to renew the regionwide Metro bond is designed to ensure all residents have access to clean air, clean water, and beautiful parks within our cities and across the region. The Nature Conservancy is committed to conserving the lands and waters on which all life depends. This measure would do just that.

Without raising taxes, this measure will:

- Preserve our region's water quality—from the Willamette, Clackamas, and Tualatin rivers, to important headwaters, and local streams and wetlands;
- Protect forests, open spaces, and areas at risk from development that are important for wildlife habitat, recreation, and needed to safeguard our air and water;
- Ensure all kids—regardless of zip code or income—have great places to play by improving access to regional parks and in communities across the Metro region to better serve our growing, diverse populations.

The Nature Conservancy participated in a comprehensive community engagement process led by Metro, with decisions grounded in science, underscoring the importance of building resilience to a changing climate, and in the interests of every Metro region resident in Multnomah, Washington and Clackamas counties. The process creates a level of accountability in the investments and priorities of the measure. This measure represents a bold vision for nature and people in the Portland Metropolitan Area and one that aligns well with The Nature Conservancy's mission and values.

Jim Desmond and Charles Wilhoite
State Director and Chair, Board of Trustees
The Nature Conservancy in Oregon

Sponsored by Nature for All

(This information furnished by Elisabeth Swarttouw, Nature for All.)

ARGUMENT IN FAVOR

Measure 26-203 can Deepen Our Democracy with Participatory Budgeting

Measure 26-203 presents an historic opportunity to preserve and enhance clean water, wildlife habitat, and our cherished access to nature across the region without raising taxes a dime. Measure 26-203 also provides an opportunity to deepen our democracy and advance racial equity through an innovative process called

participatory budgeting (PB). PB gives people real power over real public money. It is a deliberative democratic process wherein ordinary community members brainstorm community project ideas, work with local government staff to craft them into feasible projects, and then decide on the top projects to fund and implement through a binding vote in their community.

Participatory budgeting is practiced in well over 3000 municipalities worldwide. In 2009, Chicago's 49th ward launched the first PB process in the United States and has since spread to dozens of cities including New York, Phoenix, and Oakland as well as smaller towns like Greensboro, North Carolina and Vallejo, California. PB started in Seattle in 2016. It has yet to come to Oregon.

But that could change if voters pass Measure 26-203. The measure includes up to \$5 million for designing and implementing one or more pilot PB processes in our region. Measure 26-203 calls on Metro to ensure racially diverse communities with worse access to parks and nature can participate in developing and selecting park projects in their communities. These are often the same communities with the least access to government decision making and would most benefit from having direct voice and vote over the use of public funds in their neighborhood.

Our communities highly value preservation of clean water, wildlife and access to nature. They also highly value diverse democratic participation and accountability, especially in spending public funds. Measure 26-203 promises progress on all of the above.

Please vote YES on Measure 26-203!

Tyler Wilkins
Co-Director
www.pboregon.org

(This information furnished by Elisabeth Swarttouw, Nature for All.)

ARGUMENT IN OPPOSITION

VOTE NO ON 26-203: ENOUGH IS ENOUGH

Metro taxpayers have already spent \$363 million under 1995 and 2006 bond measures to acquire more than 14,000 acres. Last year, Metro spent 25% of the bond money on administration.

Now, at \$475 million, Metro is asking for more money than both of these measures combined to buy even more land. Enough is enough.

Metro says the measure won't raise taxes. But, if voters reject 26-203, the average homeowner will see their property taxes drop by about \$48 a year.

VOTE NO ON METRO'S LAND GRAB

Almost 80% of Metro's past acquisitions have been outside the Urban Growth Boundary. These purchases have nothing to do with protecting natural areas from development. Many of these parcels are zoned farm or forest land and there are no plans to expand the UGB in that direction. Instead, Metro is taking much-needed farm and forest land out of productive usage.

Inside the UGB, Metro has acquired nearly 1,000 acres of land zoned for residential development. While the region suffers from a housing affordability and homelessness

crisis, Metro's natural areas program is taking away land that is needed to deliver more housing.

VOTE NO ON SLUSH FUNDS

You won't see it in Metro's ballot title or explanatory statement, but the measure sets aside \$50 million for "advancing large-scale community visions." Leaders of the Urban Greenspaces Institute and 1,000 Friends of Oregon have referred to the visioning money as a "slush fund." Metro Resolution No. 19-4988, Engagement Summary, 06/06/2019.

VOTE NO ON BROKEN PROMISES

Metro's 1995 ballot title promised to provide areas for "walking, picnicking, and other outdoor recreation." More than 85% of Metro's land purchased under early bonds is off-limits to the public. Metro has ignored input from minority communities in favor of focusing on "passive recreation" preferred by the more privileged. Metro is the only parks provider in the region that prohibits dogs.

VOTE NO ON 26-203

(This information furnished by Eric Fruits, Cascade Policy Institute.)

ARGUMENT IN OPPOSITION

Taxpayer Association of Oregon urges No vote:

Did you know that Oregon and Minnesota are the only two states with a METRO regional government?

This "unique" third layer of government robs local control away from cities and counties.

Your property taxes helps fund this 915 employee, \$669 million dollar bureaucracy.

It's been using your tax dollars to gobble up private property across Oregon which robs new young homeowners of available land to start a home and artificially inflates home prices. This is one reason why our homeless and affordable housing crisis is bigger in the Portland-area than most of America. You're basically voting to raise your property taxes to create more homeless and higher home prices in order to fund the ever-bloating Metro bureaucracy.

Say No to METRO's never-ending, land-grabbing property tax increase.

Vote No on 26-203

-- Follow daily tax alerts and political news at OregonWatchdog.com

(This information furnished by Jason Williams, Taxpayers Association of Oregon.)

The printing of these arguments does not constitute an endorsement by Multnomah County, nor does the county warrant the accuracy or truth of any statements made in the arguments.

PORTLAND PUBLIC SCHOOL DISTRICT

Measure 26-207

Referred to the People by the City Council

BALLOT TITLE

Levy Renewal to Maintain Teaching Positions and Classroom Supports

Question: Shall district maintain teaching positions, classroom supports; renew levy of \$1.99 per \$1,000 assessed value for five years beginning 2020? This measure renews current local option taxes.

Summary: Portland Public Schools' current local option levy was approved by voters in 2014 to provide funding for schools over 5 years. The renewed levy will provide an estimated \$99.9 million in the first year. Over the past five years, the levy has funded an average of 825 teaching positions each year and, if approved, the renewed levy is projected to maintain that average over the next five years.

This renewed local option levy would continue to fund teaching positions to:

- Support a well-rounded education, including career and technical programs and enrichments and electives for all students.
- Help maintain class sizes
- Provide supports, such as reading specialists, for struggling students.

Levy cost remains \$1.99 per \$1,000 assessed property value, the same as the 2014 levy.

Funds will be placed in a sub-account, and independent citizen oversight will review expenditures to verify that funds are used as approved by voters. No levy funds will be spent for administration. Performance auditing of school district programs also will be done.

The levy will produce an estimated \$99.9 million in 2020-2021; \$103.9 million in 2021-2022; \$108.1 million in 2022-2023; \$112.4 million in 2023-2024; and \$111.9 million in 2024-2025. The estimated tax cost for this measure is an ESTIMATE ONLY based on the best information available from the county assessor at the time of estimate and may reflect the impact of early payment discounts, compression and the collection rate.

EXPLANATORY STATEMENT

Portland Public Schools currently serves over 49,000 students in 81 schools and other programs throughout the neighborhoods of Portland.

For the ninth straight year, PPS' 4-year graduation rates increased in 2017-2018. The graduation rate of 79.6% remains above the statewide average and has risen more than 17 points since 2010.

In serving the students of Portland, the district continuously strives to be fiscally responsible with taxpayer resources. Through many years of budget cuts, the school district and Board have worked to preserve classroom education. At the same time, PPS has advocated for a greater level of state investment by the Legislature and worked to ensure that all dollars are spent well and used for educational services for students. In

December 2018, independent auditors gave PPS a clean bill of financial health. The district will receive regular performance audits to monitor effective use of taxpayer resources.

The legislature has recently increased its investment in K-12 education, but more investments are needed to continue to build career and technical programs, maintain class size and better support struggling students. In the meantime, funds raised by this local option levy will help to close the funding gap.

If renewed, the levy is estimated to produce \$99.9 million for Portland Public Schools in school year 2020-2021. The proposed levy renewal would:

Fund teaching positions and classroom supports at every school in the district

- The funds help support a well-rounded education, with enrichments for elementary and middle grades and electives in varied interest areas and disciplines for high school students.
- The funds help support career and technical programs and STEM programs, including computer science education, so students can graduate with the skills necessary to be career or college ready.
- Over the past five years, the levy funded an average of 825 teaching positions annually. If approved, that average will be maintained.
- Academic support for struggling students is included.

Continue to provide fiscal accountability and independent oversight

- This renewal maintains the existing local option levy rate of \$1.99 per \$1,000 assessed value and ensures that all funds raised are directed to the voter-approved purpose of supporting schools.
- This local option requires independent citizen oversight so that tax dollars are used only for purposes approved by local voters.
- Funds will be placed in a sub-account to ensure their correct use and accurate reporting.
- No funds from this local option levy will be used for district administration.

Maintain the existing tax rate of \$1.99 per \$1,000 of assessed value

- For a home with an average assessed value of \$233,925, the cost would be less than \$39 per month, or \$465 per year.

This local option levy replaces the one passed by voters in 2014, and maintains the existing tax rate.

Submitted by
Amy Kohnstamm
Board Chair, Portland Public Schools

NO ARGUMENTS IN OPPOSITION TO THIS MEASURE WERE FILED.

PORTLAND PUBLIC SCHOOL DISTRICT

Measure 26-207

ARGUMENT IN FAVOR

Renew the Portland Teachers Levy!

YES FOR TEACHERS, YES FOR KIDS urges a YES Vote on Measure 26-207 this November

This November, Portland voters will have the opportunity to vote YES and renew the local option Teachers Levy.

A YES vote on the local levy ensures the district can maintain over 800 teaching positions across the district without raising taxes.

Portland Public Schools – serving over 49,000 students – strives for every child, in every school to succeed and reach their highest potential in life and career. Having a high quality teacher in every classroom, and class sizes that allow for individual attention and diverse, well funded instructional programs is fundamental to reaching this goal.

A YES VOTE ON 26-207 to RENEW THE LOCAL OPTION LEVY MEANS:

Preserves Over 800 Teaching Positions

- Teachers are the heart of our schools. Renewal of the levy funds over 800 high quality teaching positions across the District that help the children in our community thrive. A third of all teaching positions in Portland Public Schools are funded by the Levy.

Funding Programs for a Comprehensive Education

- Levy funds help support a well-rounded program, with enrichments for elementary and middle grades and electives in varied interest areas and disciplines for high school students.

Maintains Current Tax Rate

- This levy is a renewal. Meaning taxpayers would continue paying the same local option tax rate of \$1.99 per \$1,000 assessed value they pay today

Independent Oversight

The levy renewal requires independent oversight to ensure tax dollars are used for purposes approved by voters. The Citizen Budget Review Committee will continue to provide this oversight and all levy funds will be placed in a separate account for transparent reporting.

Please join the Yes For Teachers, Yes For Kids campaign and vote YES on Measure 26-207 to support Portland's children, teachers, and classrooms. **Renew the Portland Teachers Levy!**

- Congressman Earl Blumenauer

(This information furnished by Julia Brim-Edwards, Yes For Teachers Yes For Schools)

ARGUMENT IN FAVOR

Votar A FAVOR de la Medida 26-207 renovará el impuesto actual de los maestros de las Escuelas Públicas de Portland y preservará la financiación para más de 800 maestros en las escuelas del distrito. Aproximadamente uno de cada tres puestos docentes está financiado por el impuesto actual. Un voto A FAVOR renueva este impuesto por cinco años adicionales sin aumentar la tasa fiscal actual. Únase a nosotros para votar A FAVOR de la Medida 26-207.

Ваш голос ЗА (ориг. «YES») принятие законодательной меры 26-207 (ориг. Measure 26-207) обеспечит продление действующего в настоящее время налога, предусмотренного Управлением образования государственных школ г. Портленд для поддержки преподавательского состава, и сохранит финансирование более 800 рабочих мест учителей в школах района. Примерно каждое третье рабочее место преподавателя финансируется за счет действующего налога. Ваш голос ЗА продлит действие этого налога еще на пять лет без повышения существующей налоговой ставки. Пожалуйста, присоединяйтесь к нам и отдайте свой голос ЗА принятие законодательной меры 26-207.

Biểu quyết "YES" (đồng ý) cho Dự luật 26-207 sẽ gia hạn tiền thuế cho giáo viên tại các Trường Công lập Portland và bảo toàn kinh phí cho hơn 800 giáo viên tại các trường học trên toàn quận. Khoảng một trong ba giáo viên được tài trợ bởi tiền thuế hiện tại này. Biểu quyết "YES" sẽ gia hạn khoản thuế này thêm năm năm nữa mà không tăng mức thuế hiện tại. Hãy cùng chúng tôi tham gia biểu quyết "YES" cho Dự luật 26-207.

Cod bixinta ah HAA ee Xeerka 26-207 waxaa dib loogu cusbooneysiin doonaa canshuurta la isa saaro iyada oo la ilaalin doono maalgelinta loogu talagalay in ka badan 800 macallin ee dugsiyada ku yaala guud ahaan degmada. Qiyaastii saddex boos oo dhanka waxbarida ah hal ka mid ah ayaa lagu maalgeliyaa canshuurta hadda la isa saaro. Cod bixinta ah HAA waxaa dib loogu cusbooneysiin doonaa canshuurtan la isa saarayo taasi oo loogu talagalay shan sano oo dheeraad iyada oo aan la kordhinayn heerka canshuurta ee hadda jira. Fadlan nagula soo biir coddeynta la coddeynayo HAA ee Xeerka 26-207.

对第 26-207 项措施投赞成票将延续现有的波特兰公立学校教师征税，并为该地区的800多名教师提供资金。目前的征税为约三分之一的教职岗位提供资金。投赞成票将令该征税在不提高现有税率的前提下续期五年。请加入我们，对第 26-207 项措施投赞成票。

(This information furnished by Inna Levin, Yes For Teachers Yes For Schools.)

ARGUMENT IN FAVOR

PPS STUDENTS CALL FOR A YES VOTE ON MEASURE 26-207

As students who have grown up in PPS classrooms every day, we know firsthand what we need need to succeed. We've been inspired by PPS teachers throughout our entire lives, and we carry deep gratitude for the inspiration, wisdom, patience, and morals we've learned from educators across the district.

Renewal of the Levy is imperative for current and future students. Losing up to 800 teaching positions would inhibit our ability to provide the individualized attention necessary to properly educate. Whether we're learning arithmetic or physical education, reading comprehension or chemistry, our ability to receive instruction from our teachers hinges on appropriate class sizes and teachers with manageable work loads.

Most of us are ineligible to cast a ballot this November, but we still want to make a difference in our community. We are happy to support the PPS Teachers Levy and ask you to cast your ballot in support of our teachers. **We are the young adults we are today thanks to the tireless dedication, love, wisdom and support of PPS teachers.** Voting YES on Measure 26-207 ensures that the students who will come after us will enjoy PPS schools with the appropriate number of teachers necessary to serve our growing district.

Our siblings, teachers, and schools are counting on you - vote YES on Measure 26-207.

PPS Students

Maxine Latterell, Franklin HS Senior
PPS Board Student Representative

Oliver Baltzer, Junior
Carly Banker, Freshman
Lillian Bander, Junior
Megan Bathurst, Sophomore
Norah Bean, Junior
Jazmine Carter, Sophomore
Camille Clarke, Sophomore
Larry Delgado-Lopez, Sophomore
Kai Dever, Junior
Lucy Eckel, Freshman
Duncan Goddard, Junior
Yasmine Irish-Manibusau, Junior
Fiona Jahoda, Senior
Theo Kasten, Junior
Jackson Kincaid-Osborn, Junior
Lilah Maclowry, Junior
Isabelle March, Junior
Samy Meleigy, Sophomore
Kevin Nguyen, Senior
Karissa Owens, Junior
Sofia Padura, Junior
Liliana Signori, Junior
Stephanie Ta, Junior
Yahira Téllez, Sophomore
Mykah Vodden, Freshman
Catalina Villanueva, Sophomore
Bethy Temelso, Senior
Dante Walls, Senior
Sakira Wells, Junior

(This information furnished by Scott Bailey, Yes For Teachers Yes For Schools.)

ARGUMENT IN FAVOR

A Message from the Portland Association of Teachers

Classroom teachers across the District know that the existing local option levy is critical to our ability to educate all of Portland's students. The Portland Association of Teachers

- representing over 4,000 educators - stands with numerous community leaders across the city in calling for a renewal of the local option teachers' levy.

A YES vote on Measure 26-207 would renew the existing teachers' levy **without raising existing taxes**. Passage of the levy would:

- Maintain teachers, counselors, and specialists in every school across the District
- Support individualized attention for students
- Maintain opportunities for enrichment courses, electives, and Career and Technical Education (CTE) programming

The Portland Association of Teachers has worked with officials across the city, region and state to reduce class sizes and support greater public investment in our schools. While we are delighted by the passage of the Student Success Act in the Oregon Legislature, Portland's schools still need the local option levy to avoid losing more than 800 teaching positions.

We need to maintain this levy if we want to reverse more than three decades of disinvestment in our public schools.

That is why the Portland Association of Teachers welcomes the District's support for Measure 26-207, and their continued efforts to ensure over 800 teaching jobs remain in our community. Measure 26-207 is an opportunity for Portlanders to renew their commitment to lowering class sizes, and providing the individual attention and excellent education that children in every corner of our District deserve and need.

This November, please support Portland's teachers and vote YES on Measure 26-207.

(This information furnished by Suzanne Cohen, Portland Association of Teachers.)

ARGUMENT IN FAVOR

Parents, Portland Council PTA urges YES vote for students, teachers

For over 100 years, PTA volunteers who are parents, teachers and community members have tirelessly worked for all Portland Public Schools students. We are in our schools everyday helping students and assisting our teachers and staff.

PTA volunteers alone could never meet all the needs of our students for a modern education.

We need great teachers in every classroom. A rich education that includes academics along with those things that engage students like music, art, with amazing exploration, experimentation and hands on learning as well as career, tech-focused opportunities for every student.

Please join Portland Council PTA & continue the critical support for PPS children and teachers. Vote YES on Measure 26-207!

PTA Site Council

PPS PARENTS

Amber Anderson, Treasurer, Skyline K-8 PTA

Todd Borkowitz, Woodlawn ES

Carrie Bowers, Arleta K-8

Mary Cadien, Vice President, Woodlawn ES PTA

Keli Cook, Irvington ES PTA President
Amy Dirk, Franklin HS
Holly Echeverria, Richmond ES / Mt Tabor MS
Jena Frazzini, Grant HS / Beaumont MS
Claire Giesise, Lewis ES / Hosford MS
Heather Gregg, Peninsula ES
C. Erica Hailstone, Winterhaven K-8 / Woodstock ES
Amy Hojnowski, Beach ES
Tahni Holt, César Chávez K-8
Denise Holtrop, Roseway Heights MS
Georgie Horal, Jefferson HS
Kim Jarema, President, Atkinson ES PTA
Brita Johnson, Richmond ES
Meghan Kelley, Creston School PTA President
Tia Knuth, Creston K-8 PTA Member
Rachael Lembo, Sunnyside K-8
Jessica Lowe, Capitol Hill ES
Noel Luchs, Arleta K-8
Andrea Mukul, Ainsworth ES
Scott Overton, Portland Council PTA
Amelia Palmer-Hansen, Roseway Heights MS
Patch Adam Perryman, Metropolitan Learning Center K-8
Melissa Pomeroy, Sellwood MS
Jennifer Reel-Hall, Secretary, Peninsula PTA
Kari Schlosshauer, Abernethy ES
S. Kerin Shattuck, Irvington ES
Seth Shikora, President, Mt Tabor MS PTA
Eric Shniewind, Jefferson HS
Sierra Springfield Perryman, Metropolitan Learning Center K-8
Jennifer Stewart, Peninsula ES
Denis Theurault, Skyline K-8
Kris Wallsmith, Grant HS
Laura Watts, Vice President, Skyline K-8 PTA
Judy Zawatzky, Glencoe ES / Mt Tabor MS

(This information furnished by Scott Bailey, Yes For Teachers Yes For Schools.)

ARGUMENT IN FAVOR

A Community Committed To Diversity, Equity, Inclusion Needs Public Teachers To Thrive

The promise of equal access to public education is an integral component of the foundation of the American dream. Portland, as a progressive city who strives to champion our working families, immigrants, LGBTQ community members, Native Americans, the disability community and communities of color, deserves public schools fully equipped and prepared to provide a stable, well-rounded public education.

As Portland grows, the demographics of our city - and of PPS' students - continue to change. Portland Public Schools serves over 49,000 Portland residents:

- 43% of whom identify racially as “nonwhite;”
- 22% are eligible for free meals;
- 7% receive English as a Second Language services;
- and 15% are enrolled in special education programming.

For PPS to appropriately serve these students and these families commensurate with their educational needs and rights, the district depends on having robust, reliable funding for teachers and classroom support staff.

Measure 26-207 maintains crucial funding for over 800 teaching positions across the district without raising existing taxes. Failure to approve the levy would risk losing these 800 positions, and the burden would be most disproportionately carried by our most vulnerable students in most need of a stable, excellent public education.

An investment in reliably excellent public schools for every student is a crucial component of making sure every community succeeds. A YES Vote on Measure 26-207 is a vote of affirmation that the next generation of Portlanders deserve an education in a learning environment that is stable, welcoming, supportive, and equitable.

Please join the following community leaders in supporting a YES vote this November on Measure 26-207. Renew the Portland Teachers Levy!

Latino Network

Sadie Feibel Holmes

David Martinez

Melissa McCoy

Ximena Ospina-Todd

Maria Velez, Associate Director, SUN Community Schools

Stand for Children, Inc.

Angela Jarvis-Holland, Northwest Disability Support / All Born In

Duncan Hwang

Kayse Jama

Andrew Riley

Jason Trombley

Cameron Whitten

(This information furnished by Aaron Brown, Yes For Teachers Yes For Schools.)

ARGUMENT IN FAVOR

Business Leaders: Investment in Teachers is an Investment in our Economy

Our city's economy rests upon the bedrock of public education. Excellent public schools are necessary for building and retaining Portland's quality workforce, supporting existing businesses and attracting new ones to our city, and preparing the next generation of Portlanders for a rapidly-changing economy.

AN INVESTMENT IN PORTLAND SCHOOLS IS AN INVESTMENT IN OUR COMMUNITY

As business leaders across Portland, we're invested in our community and invested in our public schools. Voting YES on Measure **26-207** to renew the local option teachers' levy will support student achievement, teacher performance, and academic outcomes. Failure to pass Measure **26-207** would represent the loss of over eight hundred teaching jobs in the city, causing significant economic disruption to our community.

A RENEWAL MEANS NO TAX INCREASE

As businesses, we fully understand the importance of monitoring the bottom line. **Measure 26-207** provides funding for Portland's teachers while keeping our taxes at exactly the same rate for another five years. This renewal would continue independent citizen oversight so that tax dollars would be used only for purposes approved by local voters. Funds would be placed in a sub-account to provide for correct use; no funds from this local option levy would be used for district administration.

Please support this investment in Portland's current and future economy.

Renew the Local Option Levy by voting YES on Measure 26-207.

Portland Business Alliance

Bozz Media

Andrew Colas, Colas Construction

Forum Law Group, LLC

Jared I Best Counseling

Nike

Oh planning+design, architecture

Kim Osgood and Mike Roach, Owners, Paloma Clothing

The Standard

(This information furnished by Scott Bailey, Yes For Teachers Yes For Schools.)

ARGUMENT IN FAVOR

ELECTED OFFICIALS ACROSS THE CITY AGREE: RENEW THE TEACHERS LEVY

As elected officials who represent PPS teachers, students and families at multiple levels of government, we see firsthand how public education is directly related to our economy, our neighborhoods, and our quality of life. Ensuring that Portland's classrooms are prepared for every student and that Portland has enough teachers to avoid overcrowding is a top line priority for all of us as we work to serve our constituents and govern our community.

While we have secured unprecedented funding for education statewide through the Student Success Act, this local option levy remains crucial to ensure that the more than 49,000 students in Portland Public Schools are provided with excellent teachers for a modern education. A YES vote on Measure 26-207 secures funding for over 800 teachers across the district. Independent citizen oversight will ensure that funds from this local option will be used only for purposes approved by local voters.

With this perspective, we are unified in agreement: **it is imperative that voters renew the local option levy this November.**

We urge you to vote YES on Measure 26-207.

Congressman Earl Blumenauer

State Senator Ginny Burdick

State Senator Michael Dembrow

State Senator Elizabeth Steiner Hayward

State Senator Robert Wagner

House Speaker Tina Kotek

State Representative Rob Nosse
State Representative Tawna Sanchez
State Representative Barbara Smith Warner
State Representative Jennifer Williamson

Metro Councilor Sam Chase
Metro Councilor Bob Stacey
Metro Councilor Christine Lewis

Multnomah County Chair Deborah Kafoury
Multnomah County Commissioner Dr. Sharon Meieran
Multnomah County Commissioner Susheela Jayapal

Portland Mayor Ted Wheeler
City Commissioner Nick Fish
City Commissioner Amanda Fritz
City Commissioner Chloe Eudaly

See our full list of elected officials, candidates and community leaders who have endorsed a YES vote on Measure 26-207 at www.yesforteachersyesforkids.org

(This information furnished by Aaron Brown, Yes For Teachers Yes For Schools.)

ARGUMENT IN FAVOR

PPS Board Members: Local Option Levy Essential For Continued District Growth

We are honored to serve PPS students and are deeply committed to providing an excellent education across the district. It's an exciting time to serve on the PPS Board. This fall, we celebrated the opening of the renovated Grant HS; construction is underway to renovate Madison HS and build a new Kellogg MS, and construction planning is underway at both Lincoln HS and Benson HS. Thanks to the 2017 Bond, we've replaced and brought back online the majority of drinking fountains and kitchen faucets in the common areas of most schools. The legislature passed the Student Success Act, an unprecedented and long-awaited investment in education that will significantly bolster pre-K education, CTE programming, and resources for equity programs statewide.

PPS' graduation rate continues to climb - the 2017-2018 school year represented the ninth with an improvement in our graduation rate; the third in which we outperformed the state average. Our students continue to inspire, providing invaluable community leadership with their galvanized urgency for organizing on climate action while also winning academic awards and statewide athletic championships. (Congratulations, Benson Women's Basketball Team!)

It is with this backdrop of continued steady growth and success that we ask the voters of our community to affirm the progress that Portland Public Schools has been making and renew the levy. We ask that you please join the teachers, parents, students, and community leaders across the district and vote yes on Measure 26-207. Your yes vote helps ensure that PPS will be able to access the resources we need to keep our teachers in classrooms and provide an excellent education in our city's beloved public schools.

**Let's Renew the Levy.
Vote YES on Measure 26-207.**

PPS Board Chair Amy Kohnstamm
PPS Vice Chair Julia Brim-Edwards
PPS Board Member Scott Bailey
PPS Board Member Michelle DePass
PPS Board Member Eilidh Lowery
PPS Board Member Rita Moore
PPS Board Member Andrew Scott

(This information furnished by Julia Brim-Edwards, Yes For Teachers Yes For Schools.)

The printing of these arguments does not constitute an endorsement by Multnomah County, nor does the county warrant the accuracy or truth of any statements made in the arguments.

SAUVIE ISLAND FIRE DISTRICT 30J

Measure 26-206

BALLOT TITLE

Continuation of Five-Year Local Option Levy for General Operating Purposes

Question: Shall Sauvie Island R.F.P.D. #30J continue a \$0.3500 per \$1,000.00 of assessed value for five years for operating purposes beginning 2020-2021? This measure renews current local option taxes.

Summary: The taxes proposed will be used for general operating purposes for the Sauvie Island R.F.P.D. #30J. Anticipated uses of funds include state required medical testing for all firefighters, required Federal and OSHA testing of equipment and of firefighters use of equipment, physical testing of firefighters and their abilities, annual servicing and safety inspections of vehicles and equipment, including funds for replacement, and continuing volunteer training and certification.

The rate is estimated to raise the following amounts: \$49,819.00. in 2020/2021, \$50,940.00 in 2021/2022, \$52,086.00 in 2022/2023, \$53,258.00 in 2023/2024 and \$54,456.00 in 2024/2025.

The estimated tax cost for this measure is an ESTIMATE ONLY based on the best information available from the county assessor at the time of estimate and may reflect the impact of early payment discounts, compression and the collection rate.

EXPLANATORY STATEMENT

The continuing mission of the Sauvie Island Volunteer Rural Fire Protection District 30J is to provide medical assistance, and fire protection service to the residents of Sauvie Island and to provide mutual aid assistance, per our contracts, with Scappoose Fire Department and the Portland Fire Bureau. This mission requires passage of a five-year Local Option Levy for general operating purposes.

Many factors contribute to the departments continued increase in cost of operations. Basic resources such as electricity, fuel, and natural gas prices have increased dramatically. OSHA has instituted institutional testing and physical wellness monitoring for all fire fighters, and the cost of these mandatory services rise each year. Maintenance

of our hard goods, equipment and basic fire protection gear continue to be high cost items (with one set of turnouts for one firefighter costing from \$2000-\$3000). Additionally, equipment needs to be replaced as it becomes dramatically outdated, falls below Federal Standard or becomes unsafe.

The above reflect only a small selection of the costs and reasons for the Local Option Levy. Detailed explanations of any of the above costs and a review of the District's Budgets is available to residents of the district by mail, email or at public meetings and Department board meetings.

Without the passing of this levy the district faces the elimination of part of its services, or the ceasing of operations altogether.

Submitted by:
Norvin Collins, Fire Chief
Sauvie Island Fire District 30J

NO ARGUMENTS IN OPPOSITION TO THIS MEASURE WERE FILED.

SAUVIE ISLAND FIRE DISTRICT 30J

Measure 26-206

ARGUMENT IN FAVOR

Presented by the Sauvie Island Volunteer Firefighters Association

The Sauvie Island Volunteer Firefighter's Association appreciates all the support the residents of Sauvie Island have given us throughout the years, and we need your continued support in this Local Option Levy election.

We continue to work hard to provide support for all of our community and for all of our volunteer firefighters. Through community fundraising and donations, the Firefighters Association has contributed to the District as much as possible, yet, as prices continue to climb so have the Districts basic operating costs. Needs for electricity, fuel, equipment, telephones, radios, pagers, insurance, and more, are increasing drastically and all are essential to the workings of any Fire Department.

The revenue from the levy will also be used towards mandatory medical testing and immunization, training on current and ever-changing health and safety procedure and policy, and required OSHA testing of equipment, as well as annual servicing, inspections and equipment replacement. The Association has come to the conclusion that without the revenue provided by this levy we will no longer be able to provide the same level of service, including both medical response and fire protection.

Please feel free to call the Chief or the Association Officers directly, or stop by the station to talk, if you have any questions regarding the levy or the necessity of this funding.

We hope you will join us in voting 'YES' for this measure so we can keep the Sauvie Island R.F.P.D. #30J a healthy, strong and viable fire and medical service for our community.

Emily Wallace,
President
Sauvie Island Volunteer Firefighter's Association

18342 N.W. Sauvie Island Road
Portland, Oregon 97231
503-621-1242

(This information furnished by Emily Wallace, Sauvie Island Vol. Fire Fighters Association.)

The printing of these arguments does not constitute an endorsement by Multnomah County, nor does the county warrant the accuracy or truth of any statements made in the arguments.



PLEASE

RECYCLE

**When you are finished with
this voters' pamphlet**