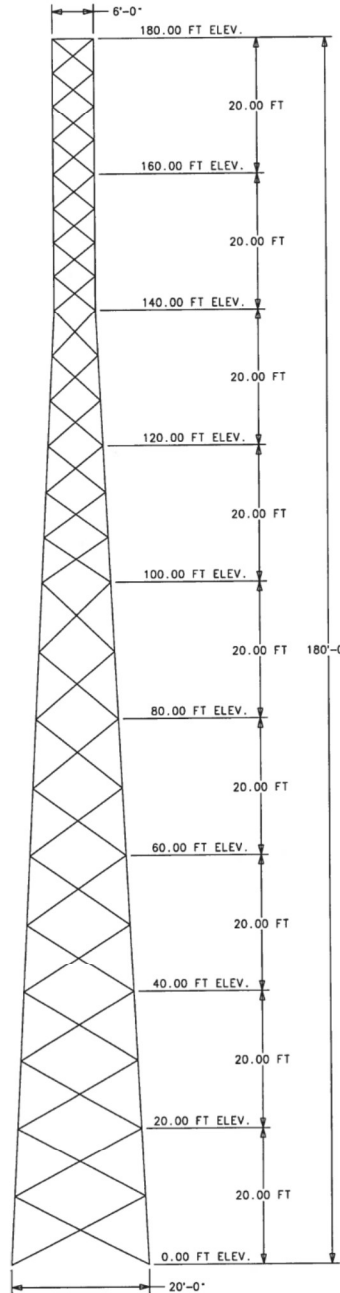


MEMBER TYPE & SIZE CHART

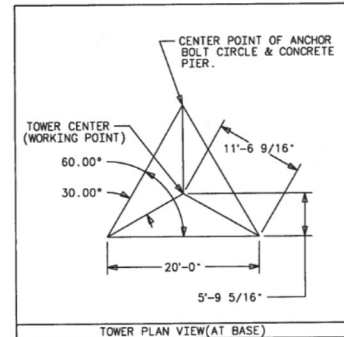
SECTION 1 ELEVATION = 160.00 FT TO 180.00 FT	
LEG	= PIPE 2.88 O.D. X 0.203 WALL THK.
DIAGONAL	= 4 1.75 X 1.75 X 0.188
HORIZONTAL	= 4 2.50 X 2.50 X 0.188
APPROXIMATE SECTION WEIGHT = 900#	
SECTION 2 ELEVATION = 140.00 FT TO 160.00 FT	
LEG	= PIPE 4.00 O.D. X 0.226 WALL THK.
DIAGONAL	= 4 2.00 X 2.00 X 0.188
APPROXIMATE SECTION WEIGHT = 1100#	
SECTION 3 ELEVATION = 120.00 FT TO 140.00 FT	
LEG	= PIPE 5.56 O.D. X 0.258 WALL THK.
DIAGONAL	= 4 2.00 X 2.00 X 0.188
APPROXIMATE SECTION WEIGHT = 1450#	
SECTION 4 ELEVATION = 100.00 FT TO 120.00 FT	
LEG	= PIPE 5.56 O.D. X 0.258 WALL THK.
DIAGONAL	= 4 2.50 X 2.50 X 0.188
APPROXIMATE SECTION WEIGHT = 1650#	
SECTION 5 ELEVATION = 80.00 FT TO 100.00 FT	
LEG	= PIPE 6.63 O.D. X 0.280 WALL THK.
DIAGONAL	= 4 3.00 X 3.00 X 0.188
APPROXIMATE SECTION WEIGHT = 2000#	
SECTION 6 ELEVATION = 60.00 FT TO 80.00 FT	
LEG	= PIPE 8.63 O.D. X 0.322 WALL THK.
DIAGONAL	= 4 3.00 X 3.00 X 0.250
APPROXIMATE SECTION WEIGHT = 2700#	
SECTION 7 ELEVATION = 40.00 FT TO 60.00 FT	
LEG	= PIPE 8.63 O.D. X 0.322 WALL THK.
DIAGONAL	= 4 3.00 X 3.00 X 0.250
APPROXIMATE SECTION WEIGHT = 3050#	
SECTION 8 ELEVATION = 20.00 FT TO 40.00 FT	
LEG	= PIPE 8.63 O.D. X 0.322 WALL THK.
DIAGONAL	= 4 3.50 X 3.50 X 0.250
APPROXIMATE SECTION WEIGHT = 3400#	
SECTION 9 ELEVATION = 0.00 FT TO 20.00 FT	
LEG	= PIPE 8.63 O.D. X 0.322 WALL THK.
DIAGONAL	= 4 3.50 X 3.50 X 0.250
APPROXIMATE SECTION WEIGHT = 3550#	

APPROXIMATE TOWER WEIGHT = 19800#



NOTES:

- MAXIMUM DESIGN REACTIONS AT BASE:
 SHEAR = 26.55 KIPS/LEG
 VERTICAL DOWNWARD = 292.11 KIPS/LEG
 VERTICAL UPWARD = 274.71 KIPS/LEG
- TOWER DESIGN CRITERIA: EIA/TIA-222-G & H
- THIS STRUCTURE HAS BEEN DESIGNED FOR THE FOLLOWING LOADING:
 EXPOSURE CATEGORY = C
 STRUCTURE CLASSIFICATION = III
 TOPOGRAPHY CATEGORY = 2, HEIGHT OF CREST = 584.00 FT
 A. CASE 1 WIND = 76 MPH ICE = 0.00 IN
 CASE 2 WIND = 30 MPH ICE = 1.50 IN
 CASE 3 WIND = 60 MPH ICE = 0.00 IN
 FOR TWIST & SWAY
 B. ANTENNA LOADING IS PER THE ANTENNA MOUNTING TABLE SHOWN BELOW.
- FINISH: GALVANIZED PER ASTM A-123
- THIS QUOTE/PERMIT DRAWING SHALL NOT BE USED FOR CONSTRUCTION.
- SITE NAME = BULL RUN FILTRATION FACILITY
- $V_{WT} = 105 \text{ MPH}$



EXPIRES: 6/30/23

Jeffrey E. Grassman
 Digitally signed by Jeffrey E Grassman
 Date: 2022.03.16 09:36:27 -0700'

ANTENNA MOUNTING TABLE

ANTENNA TYPE & MODEL NO.	SIZE (DECIMAL FEET)	FREQUENCY	QTY.	+MOUNTING HEIGHT (DECIMAL FEET)	MOUNTING AZIMUTH
4-6' HIGH PERFORMANCE		N/A		180.00 FT	N/A
2-MEDIUM YAGI		N/A		170.00 FT	N/A
2-MEDIUM YAGI		N/A		160.00 FT	N/A
2-MEDIUM YAGI		N/A		150.00 FT	N/A
2-MEDIUM YAGI		N/A		140.00 FT	N/A
2-MEDIUM YAGI		N/A		130.00 FT	N/A
1-WHIP (2.5' X 6')		N/A		170.00 FT	N/A
1-WHIP (2.5' X 6')		N/A		160.00 FT	N/A
1-WHIP (2.5' X 6')		N/A		150.00 FT	N/A
1-WHIP (2.5' X 6')		N/A		140.00 FT	N/A
1-WHIP (2.5' X 6')		N/A		130.00 FT	N/A
1-36" Standoff		N/A		170.00 FT	N/A
1-36" Standoff		N/A		160.00 FT	N/A
1-36" Standoff		N/A		150.00 FT	N/A
1-36" Standoff		N/A		140.00 FT	N/A
1-36" Standoff		N/A		130.00 FT	N/A

* = CENTERLINE OF ANTENNA . N/A = NOT AVAILABLE

Exhibit A.134

ORDER NO.	FILE ID	SCALE	DATE	ENGR
541305	541305	NONE	03/16/22	JEG
DESCRIPTION				
180.0 FT SELF-SUPPORTING TOWER, SITE: BULL RUN FILTRATION FACI				

