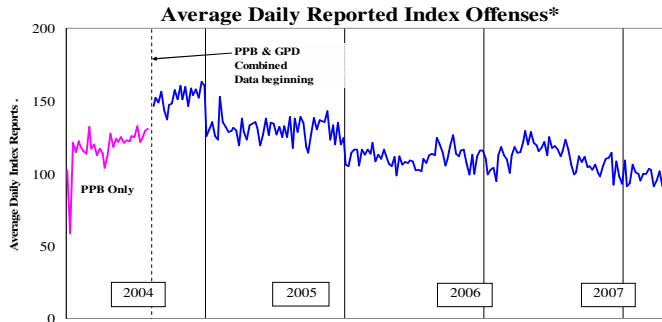


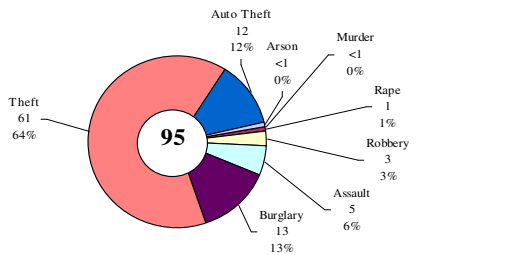
SAFETY PRIORITY BRIEF: MARCH 2008

Multnomah County: Reported Index Offenses



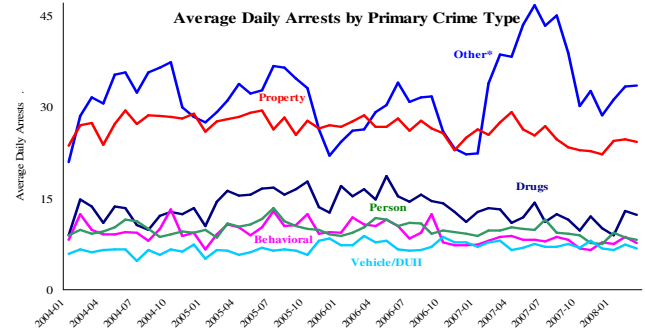
*The graph reflects the combined weekly index offenses data from Portland Police Bureau (PPB) and Gresham Police Dept (GPD), beginning 8/2004 (line in blue). According to LEDS (2005) data PPB and GPD account for 95% of all offenses county-wide. Index offenses account for about half of all reported offenses.

Average Daily Reported Index Offenses*



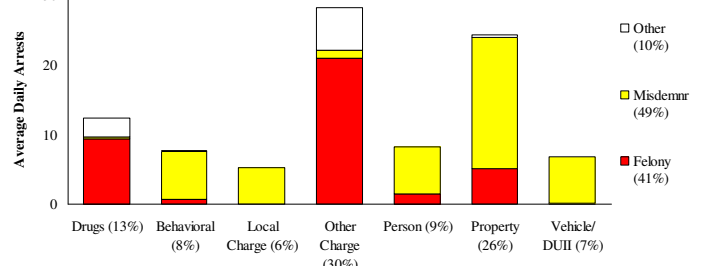
*Portland and Gresham, combined 4-week moving average for the week ending 3-29-08.

Multnomah County: Portland Arrests



*Other largely reflects fugitive/warrant charges and local ordinances (DFZ/PFZ). PPB data only, downloaded 4/16/08.

Average Daily Arrests*: March (n=93)



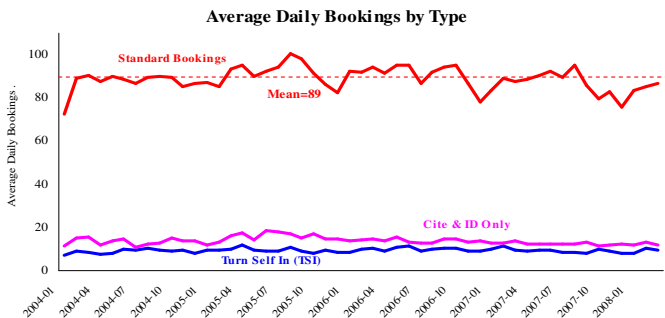
Local charges include drug- and prostitution-free zone violations.

Primary Charge (Percent of Total Arrests)

*There were 2872 arrests in March.

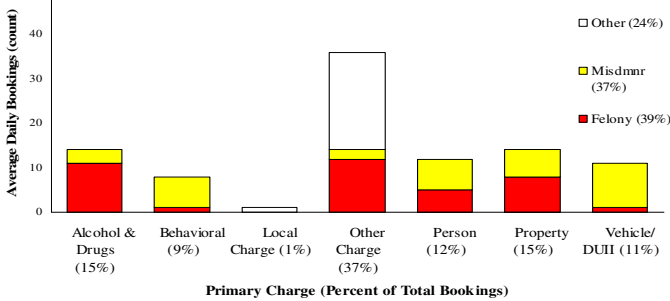
From now on, warrants previously categorized as 'other' will be listed under felony arrests.

Sheriff: Bookings



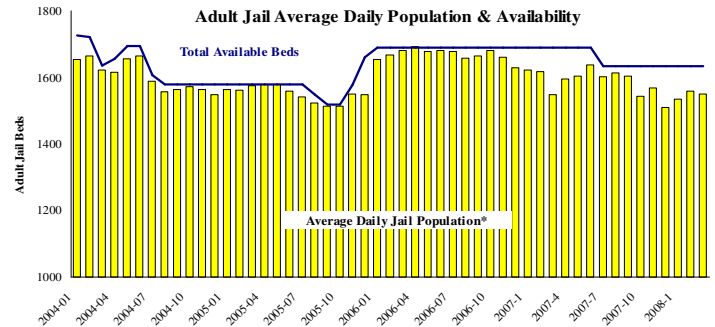
*In-transit bookings are not reported herein and account for ~4% of all bookings. March's average length of stay (ALS) per booking was 15.04 days.

Average Daily Bookings by Severity*: March (n=99)



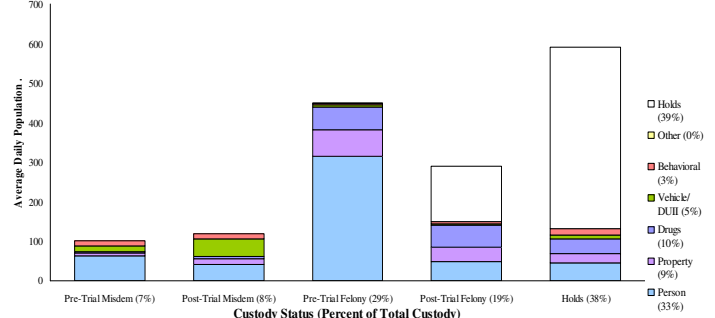
*Excludes Cite & ID. Total of 3059 bookings (98.7/day) through 3/31/08. Corrections Health reported 497 psych-alerts (16/day) for the entire month of March.

Sheriff: Custody- Adult Jail Beds



*Excludes in-transit custody classifications. The MCSO reported 15 matrix releases for March 2008.

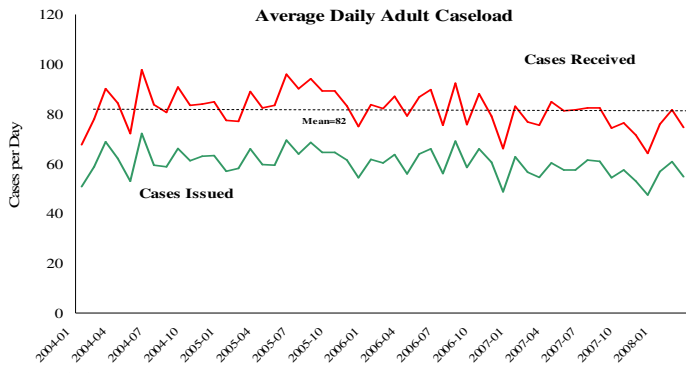
Average Daily Bed Use: March (n=1549)



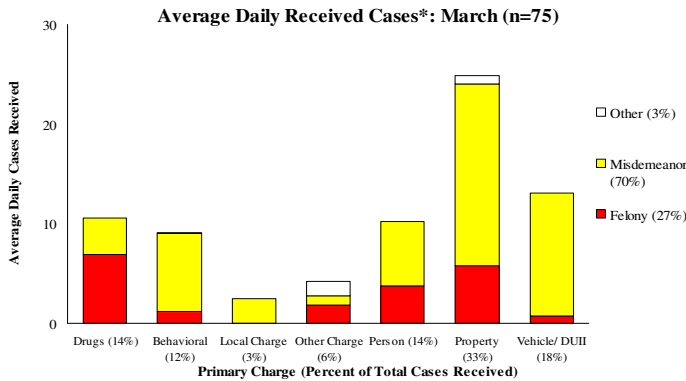
Average Daily Jail System Capacity=1633. Average Daily Population (ADP)=1549; there were 84 available beds on any given day.

Notes: In February Average Daily Reported Index Offenses experienced a spike in Thefts and Assaults which drove the total average to 101 per day. Thefts and Assaults decreased to more normal levels in March resulting in 95 average daily reported offenses. The total Average Daily Arrests changed little from February; of note though is a 3% shift from Misdemeanors to Felonies. Average Daily Bookings totals also changed little from February to March but experienced an increase in A&D and property crimes with a corresponding decrease in Behavioral and Local charges.

District Attorney: Adult Caseload

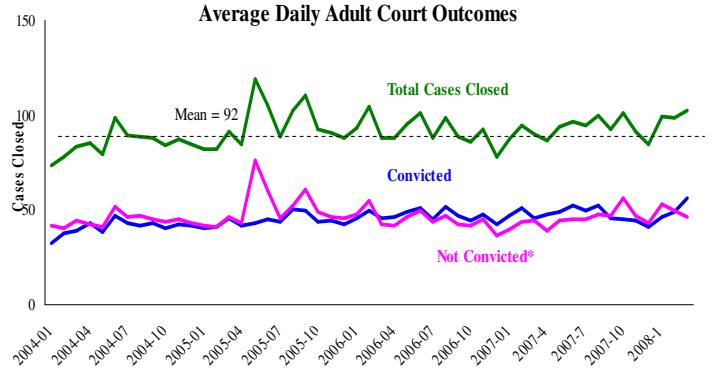


*Data retrieved 4/18/2008



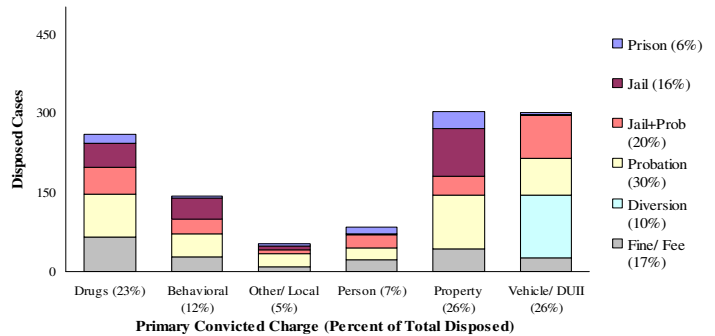
*March had 2314 received cases as of 3-31-2008 (74.6/day). Of those, 330 cases were pending review.

Court Processes: Sentencing Outcomes



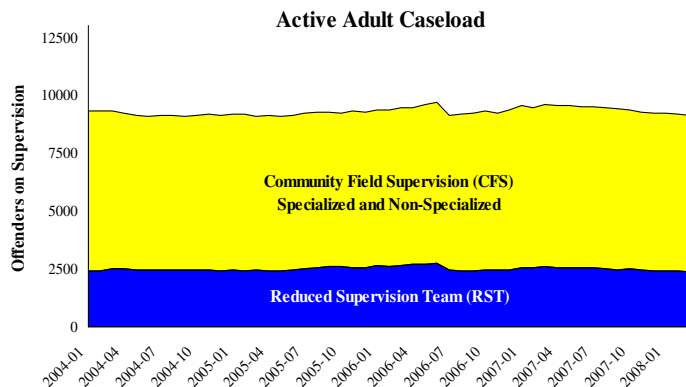
*Includes dismissed cases (typically 'no complainant') and cases found not guilty. Adult felony and misdemeanor cases only.

Disposition Type by Primary Conviction*: March 2008

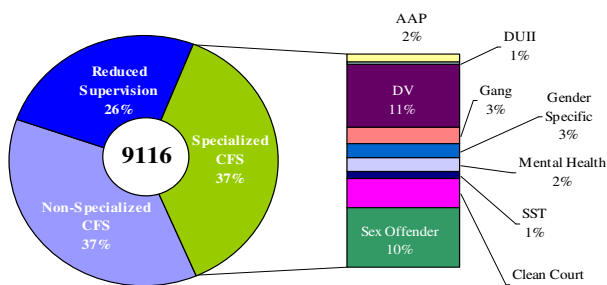


*Sentenced adult felony and misdemeanors primary convictions only. Primary conviction charge is the most serious charge with a conviction and may differ from the original primary charge. March had 1,746 convictions; 23% were felonies.

Adult Community Supervision: Caseloads

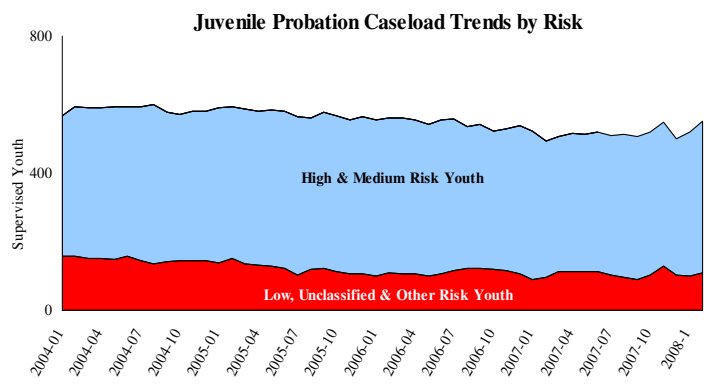


Adult Active Caseload by Type*: March 2008

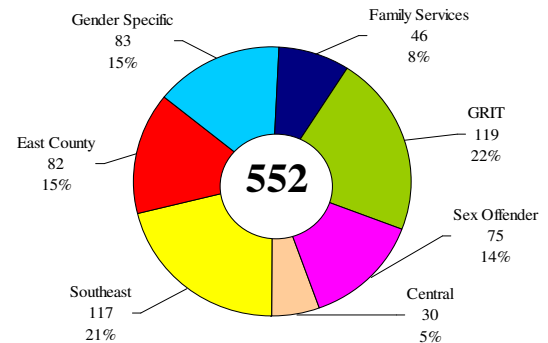


*Less than 1% are "other" cases which have been included as non-specialized.

Juvenile Community Supervision: Caseloads



Juvenile Justice Caseload by Unit*: March 2008



*The average caseload per counselor was 24.9 cases for March. The Family Services Unit became active in January.

Notes: Average Daily Received Cases decreased for the first time in 3 months to 75 daily cases (from 82 in February). This decrease was driven by drops in both Drug and Behavioral related cases. Average Daily Adult Court had the highest total number of cases closed since February 2006 and the highest number of Convictions on record since January 2004. This increase was due primarily to a rise in Drug convictions. Juvenile Justice Caseloads experienced its highest level since September 2006. This was due to an increase in the number of cases in the Gender Specific (73 in February to 83 in March), Sex Offender (64 in February to 75 in March), and GRIT units (110 to 119).