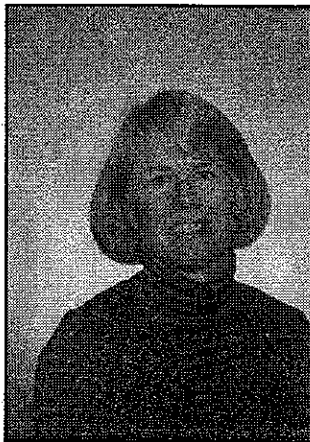


RIVERDALE SD #51-315JT

SAUVIE ISLAND SD #19

Director, Position 5

Director, Position 2



BARBARA N.
CHALMERS

OCCUPATION: Community Volunteer.

OCCUPATIONAL BACKGROUND: Technical Librarian, Portland General Electric (1977-80.) Policy writer, Portland General Electric (1980-81.) Investor Relations Specialist, Portland General Electric (1981-1983.) Policy and Procedure Specialist, Portland General Electric (1983-1987.)

EDUCATIONAL BACKGROUND: Master of Library Science, University of Washington, August 1977; Bachelor of Arts, University of California, Davis, March 1976; Graduated Phi Beta Kappa and Magna Cum Laude with a department citation of scholastic excellence in English Literature.

PRIOR GOVERNMENTAL EXPERIENCE: None.

Ten years ago my family and I moved to the Dunthorpe area because of the excellent reputation of the Riverdale School district. With three children to educate and as a supporter of public schools, I was pleased to find a small, independent, community-supported school with high academic standards, low teacher-pupil ratios, and art and music programs.

Riverdale has faced many challenges since then, and I have taken an active role in ensuring that the district remain independent and outstanding. I participated in the High School Community Forum; served on the Foundation Committee which designed a plan to supplement diminishing tax resources with private donations; have served as the Secretary of the Riverdale School Foundation since its inception and am currently the co-chairman of the 1996-97 fund raising campaign; served as a member of the successful Committee to Maintain Riverdale's Independence; and currently serve on the Budget Committee of the School Board.

I have also served on various P.T.C. committees, been an officer in that organization twice, and have served as co-chairman of three major fund raising events. I spend a great deal of time at school, both in the classrooms and in the library, and feel I have a clear understanding of what goes on at Riverdale on a daily basis.

The next four years are critical to the future of the district as we build a new high school campus, make improvements to the elementary school facility, continue to incorporate Coalition of Essential Schools principles into the curriculum, and maintain the quality of education our children receive in the uncertain fiscal environment created by Measure 47. In addition, the Riverdale School District has the extraordinary opportunity to create a unique and outstanding secondary education program that will attract students from throughout the Portland area. These are exciting and challenging times, and I look forward to the opportunity to serve.

(This information furnished by Barbara N. Chalmers)

No Photo
Submitted

KENT
MEYER

OCCUPATION: Self Employed - Owner of Trucking Firm for last 15 years.

OCCUPATIONAL BACKGROUND: Vice President and General Manager of Large Trucking Firm for 21 years.

EDUCATIONAL BACKGROUND: 3¼ years College Education.

PRIOR GOVERNMENTAL EXPERIENCE: USAF - Active Duty and Reserve for 6 yrs.; Honorable Discharge.

The Sauvie Island school district has been in a period of indecision for the last 3 to 4 years, due to the State of Oregon regulation requiring school districts to provide a K-12 grade education or merge with an adjoining district that offers K-12 grades. Our school district presently has 15 High School students who attend High School classes in conjunction with the Riverdale School District at the Failing School building at the west end of the Ross Island Bridge in Portland, Or.

Our present school board has plans to build a High School on Sauvie Island that will have a capacity of 125 students and a gymnasium that will have a capacity of 300 people. The present High School student population on Sauvie Island is approximately 48 island students. Of these students, approximately 35 attend other schools in outlying districts.

In today's society our students need the best possible education available in order to succeed. A small school education (K-6) as has been the policy in the past, is adequate, however, older students (7-12 grades) need the diversity of classes and subjects that can only be offered by a large district. This should be the goal of our school board. To limit our students to an education of lesser quality will be doing a disservice to ourselves and our students. Our present school board appears to place more importance on control of the district than on the quality of education. It is time that we explored other avenues and considered consolidation of our district. With the limited number of students in the district our students should be attending a school that offers the educational potential and social growth needed to make today's students ready to be tomorrow's leaders.

(This information furnished by Kent M. Meyer)

SAUVIE ISLAND SCHOOL DISTRICT #19

Director, Position 3

Director, Position 3

No Photo
Submitted

**SCOTT W.
CLEMENT**

No Photo
Submitted

**DAN
CYR**

OCCUPATION: Director of Managed Care Contracting and Sales, Legacy Health System, Portland, Oregon.

OCCUPATIONAL BACKGROUND: Vice President for Managed Care, Pacific Medical Group, Portland, Oregon; Health Services Manager, Multnomah County Health Division, Portland, Oregon.

EDUCATIONAL BACKGROUND: University of Idaho, B.S.; University of Oregon, M.S.

PRIOR GOVERNMENTAL EXPERIENCE: Sauvie Island School District #19, Board of Directors.

The residents of Sauvie Island have a long and proud tradition of providing excellent educational opportunities for Island children. That tradition has been threatened by a law passed by the State Legislature in 1993 that required school districts which were not K-12 districts to merge with a neighboring K-12 district or expand their programs. Our District Board of Directors decided to expand our program and today we are recognized by the State Department of Education as a full-fledged K-12 district.

Three very important challenges now face our district. We must work hard to continue to exist as an independent school district. I firmly believe our children will be served best by an independent Sauvie Island School District controlled locally by Island residents. We also must work hard to rebuild broad based community support for our schools by reaching out to the entire community. Finally, we must accomplish these tasks living with many uncertainties regarding funds available to educate our children. That will require creativity, a willingness to make hard choices and a commitment to an open process of Board decision making.

I have been honored to serve on our school board and am asking for your support in my bid for re-election.

(This information furnished by Scott Clement)

OCCUPATION: Dan Cyr Enterprises, Inc., President: Producer of specialty automotive shows.

OCCUPATIONAL BACKGROUND: Owned and operated 3 business during the period of 1973 - present. Fifteen years: computer marketing and service; three years: automotive dismantling and seven years: producing the Portland Roadster Show.

EDUCATIONAL BACKGROUND: Mercer Island, Washington; completed K-12; graduated 1960. Attended Yakima Valley College 1963-65; completed courses in data processing and accounting.

PRIOR GOVERNMENTAL EXPERIENCE: August 1960 - July 1963; U.S. Marine Corps.; Honorable Discharge.

It is my belief that the children are our future and the better education they receive; the better citizens they will become as adults. The opportunity to learn skills and interact with others comes from a diverse educational offering. While I support the small school environment during the formative years, K-6, once a student reaches his/her teenage years, the horizons of education and interaction must be expanded.

As a Sauvie Island School Board member, I will strive to provide the best possible educational opportunities for all our students. Those opportunities will include exploration of educational alternatives for grades 7-12. The many career paths available in today's society require multiple choices in courses of study. These choices are not available in our small school environment. The Oregon Law changed in 1991 to require districts provide a K-12 curriculum by the 1996-97 school year. Sauvie Island School Board complied with the law and established a 7-12 curriculum. This curriculum is very limited and with the current enrollment of only 15 students in the Sauvie Island High School, a limited curriculum is the most that can be provided.

I believe we can retain the quality educational environment for our K-6 students in a consolidated district. Our present school board has been reluctant to seek and fully consider the option of consolidation for fear of losing district control. It is time to refocus on what is best for our students and explore the alternative of district consolidation to provide the best education opportunities possible.

(This information furnished by Daniel J. Cyr)

SAUVIE ISLAND SCHOOL DISTRICT #19

Director, Position 5

Director, Position 5

No Photo
Submitted

**JERRY
BURGER**

No Photo
Submitted

**DAVE
RUUD**

OCCUPATION: OWNER, LLOYD TRAVEL INC. (Nov 1973-Present), 1026 N. E. Multnomah St., Portland, OR 97232.

OCCUPATIONAL BACKGROUND: UNITED AIRLINES INC. (June 1960-Nov 1973), 640 S.W. Broadway, Portland, OR 97205.

EDUCATIONAL BACKGROUND: St. Frederick's grade school - St. Helens OR; Scappoose Union High School - graduated 1956; Portland State University - Graduated 1970 B.S. Business & Technology; Highest grade - 16 - no graduate school.

PRIOR GOVERNMENTAL EXPERIENCE: U.S. COAST GUARD 1957-1959.

I believe that every child should have every opportunity to achieve a full and diverse education, one from a curriculum in which a wide variety of career opportunities are available. With a total high school enrollment of just 15 students these opportunities realistically cannot be offered, nor achieved.

With current and future restrictions on new home construction on the Island we cannot foresee any increase in enrollment from an increase in population. Current homes for sale on the Island are not selling primarily due to the unsettled and uncertain direction of our schools. This situation, coupled with the budget restrictions of Measure 47, means other districts will be reluctant to release any students in order to retain state funding, all of which leads to inadequate enrollment to support a K-12 district.

If we as a K-12 district cannot offer a wide choice of career studies, then, under state law we cannot keep the students from transferring to a district that does offer these opportunities.

As a Sauvie Island School Board member I will do my best to seek and offer the best solutions for our students education. I believe the time has come to face the facts and revisit the consolidation efforts.

(This information furnished by Jerry Burger)

OCCUPATION: Physician.

OCCUPATIONAL BACKGROUND: Physician.

EDUCATIONAL BACKGROUND: B.S. 1974; M.D. 1980.

PRIOR GOVERNMENTAL EXPERIENCE: School Board.

I have enjoyed serving on the Sauvie Island School Board, and would be honored to continue to serve this community. My beliefs are as follows:

- Our district was forced by legislation to either consolidate or create a K-12 district. After careful review of nationwide trends that indicate that small schools are nearly always closed within a few years once they consolidate with larger districts, our district chose to create a K-12 district.

- Both large and small schools have advantages and disadvantages, but the advantages of maintaining a small district in this case far outweigh the disadvantages.

- The value of education exceeds the cost.

- The cost to our community in terms of tax dollars is likely to be less with our own independent district than if we were to consolidate with either Portland or Scappoose.

- The people of the Island possess the foresight, wisdom, and generosity that generations before us had which ensured, through good times and bad, that the children of this Island were educated in this community.

- Those who came before us also had to make difficult decisions regarding the school and other services that we now benefit from. They too had to think about what kind of community they wanted Sauvie Island to be in 10, 20, 30 years. It's now our turn to make these kinds of decisions. Do we envision generations of families continuing to live here on the Island, attending Sauvie Island School, volunteering for the fire department, joining the Grange and other civic groups, and continuing the tradition of a close-knit, supportive community that cherishes and cares for young and old alike?

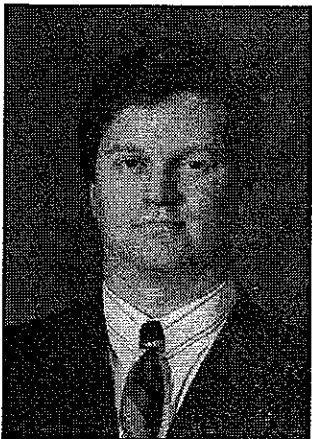
- I urge you to look forward, while remembering the past. Without the school, fewer families and individuals who value the strengths of a close-knit community will choose to live on the Island.

- My goal is to make decisions in the best interest of current patrons and future generations.

(This information furnished by Dave Ruud)

TUALATIN VALLEY FIRE & RESCUE

Director, Position 1



GORDON L.
HOVIES

OCCUPATION: Professional Firefighter, Portland Bureau of Fire, Rescue and Emergency Services.

OCCUPATIONAL BACKGROUND: Volunteer Firefighter, Tualatin Rural Fire Protection District; Professional Firefighter, Clackamas County Fire District #54; Communication and Security Business Experience.

EDUCATIONAL BACKGROUND: Western Oregon State College, Public Administration Program; Portland Community College, Fire Science Program; Tigard High School.

PRIOR GOVERNMENTAL EXPERIENCE: None.

I am seeking this position for a variety of reasons. As a life long resident, I know the area served by Tualatin Valley Fire & Rescue. As a Professional Firefighter and former small business owner, I have the luxury of knowing both the Fire Service and Business. This is an asset that would allow me to effectively serve on the Board of Tualatin Valley Fire & Rescue.

I would work diligently to ensure that Tualatin Valley Fire & Rescue:

- Operates In A Financially Prudent And Responsible Manner
- District Taxpayers Get The Most For Their Tax Dollars
- Looks To Alternatives To Traditional Fire Service Approaches
- Updates the Master Plan to ensure that we are continuing to meet the communities needs
- Regionalizes Services To Provide Cost Effective Operations
- Provides Citizens With Safety Education And Emergency Medical Training
- Looks At The Future With An Eye To Reducing the demands on our Ratepayers
- Utilizes Volunteer Citizen Disaster Teams For Emergencies Created By Manmade and Natural Disasters, such as Floods, Windstorms, and Earthquake.
- Assists The Fire Service To Be More User Friendly
- Continues To Provide Efficient And Effective Emergency Services

The knowledge, skills and abilities I bring to the position are vital, if we are to successfully meet the future challenges of doing more with less.

I look forward to these challenges and will appreciate the opportunity to serve you.

(This information furnished by Gordon L. Hovies)

**If you know
someone that is
sight-impaired,
please inform them
that an audio tape of
this pamphlet can be
obtained at no-cost
by calling:
Independent Living
Resources
(232-7411)**