

Multnomah County Voters' Pamphlet

Measure #34-281 - Tualatin Valley Fire & Rescue District (TVF&RD)

Ballot Title

Annexation of Newberg Rural Fire Protection District Territory by TVF&R

Question: Shall TVF&R annex all territory within Newberg Rural Fire Protection District (Newberg Rural) upon Newberg Rural's dissolution?

Summary: Since July 1, 2016, Tualatin Valley Fire and Rescue District (TVF&R) has provided fire protection, emergency medical, and ambulance transport services to Newberg Rural Fire Protection District (Newberg Rural) under contract. In July 2017, Newberg Rural's board of directors decided that dissolution of the Newberg Rural Fire Protection District and annexation to TVF&R would provide the most stable solution for long-term service to the area. Voters residing within the Newberg Rural territory voted on the questions of dissolution of their district and annexation to TVF&R in Yamhill County measures 36-187 and 36-188, respectively, on November 8, 2017. The outcome was 62.28% in favor of dissolution and 62.99% in favor of annexation to TVF&R. This measure seeks approval of the annexation from voters residing in TVF&R's existing service area.

Once annexed, Newberg Rural's residents will pay the same tax rate as existing TVF&R patrons. They will also become eligible to vote for TVF&R directors and on any future TVF&R property tax proposals. This measure will not increase taxes paid by existing TVF&R patrons.

Explanatory Statement

Approval of this measure would annex all the territory within Newberg Rural Fire Protection District (Newberg Rural) by Tualatin Valley Fire and Rescue.

For decades, Newberg Rural had an agreement with the City of Newberg for the provision of fire and emergency medical services. The City of Newberg approached TVF&R for contract services in 2016 due to funding limitations that made it difficult to sustain adequate staffing, maintain equipment, and comply with national standards given increased service demands. When the City of Newberg began contracting with TVF&R, services were extended to Newberg Rural to honor the historic arrangement.

After hiring an independent consultant to research options for Newberg Rural's future, the Newberg Rural board of directors decided that dissolution of the district and annexation to TVF&R would provide the most stable solution for long-term service to the area. Voters residing within the Newberg Rural territory voted on the questions of dissolution of their district and annexation to TVF&R in Yamhill County measures 36-187 and 36-188, respectively, on November 8, 2017. The outcome of that election was 62.28% in favor of dissolution and 62.99% in favor of annexation to TVF&R.

If TVF&R voters also approve annexation of the territory within Newberg Rural, Newberg Rural residents will pay the same rate as current TVF&R residents beginning July 1, 2018. They will also become eligible to vote for TVF&R directors and on any TVF&R property tax proposals.

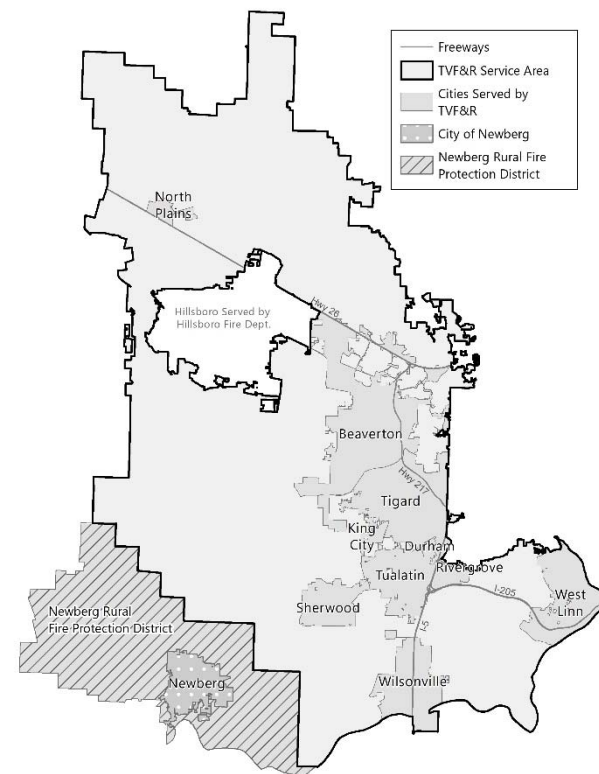
TVF&R's combined tax rate is \$2.0799 per \$1000 assessed valuation, which includes a permanent tax rate of \$1.5252, a local option levy of \$0.45 (expiring in 2020), and a bond levy of \$0.1047.

Approval of this Measure will not increase taxes for TVF&R residents and could possibly decrease the rate paid on bonded debt. TVF&R will also receive all fire and emergency response assets, such as fire vehicles and cash assets, from Newberg Rural. TVF&R will reinvest proceeds from Newberg Rural's cash assets into future infrastructure that will serve the Newberg Rural area.

TVF&R's history is based on similar voluntary and mutually beneficial annexations. TVF&R took shape between 1972 and 2016, as a number of city fire departments and rural districts consolidated to share limited resources and save money. TVF&R achieves cost savings through economies of scale such as buying trucks and equipment in bulk, reducing administrative overhead, and leveraging a system of response to strategically locate stations, resources, and personnel.

A "yes" vote approves annexation. A "no" vote rejects annexation.

Submitted by:
Cassandra Ulven, Public Affairs Chief
Tualatin Valley Fire & Rescue District



No arguments in favor or opposition to this measure were filed.

Multnomah County March 13, 2018 Special Election Information

Dear Multnomah County Voter:

Here are a few things you should know about the March 13 Special Election:

- **This election is only for registered voters in the Tualatin Valley Fire and Rescue District (TVF&RD).**
- You can view your registration status at oregonvotes.gov/myvote. There you can check or update your voter registration or track your ballot.
- Voted ballots **MUST** be received at any County elections office in Oregon or official drop site location by **8:00 PM, Tuesday, March 13, 2018 to be counted.**
- Starting at 8:00 PM on election night, preliminary election results will be posted on our website www.mcelections.org
- If you need a replacement ballot or have any questions, you can contact our office at 503-988-3720 or www.mcelections.org.

Sincerely,

Tim Scott,
Multnomah County Director of Elections



NEED ASSISTANCE IN VOTING?

Contact Multnomah County Elections
Phone: 503-988-3720
Oregon Relay Service (TTY): 711
Email: elections@multco.us



Sign up to Track Your Ballot! Get Your Virtual "I Voted" Sticker

Track Your Ballot! Know where your ballot is in the voting process and get a virtual "I Voted" sticker. As a Multnomah County voter, you can sign up to receive alerts via text, phone or email. Know when your ballot is mailed out to you. After you vote and return your ballot, be alerted when it has been accepted for counting.

Inside the "Accepted Ballot" message, you'll also receive access to a special Oregon "I Voted" virtual sticker ready to share on social media.

Sign up online for Track Your Ballot at <https://multnomah.i3ballot.net/>. There is no charge to the voter for this service*.

Text message charges may apply if you select the text message option. Consult your carrier.

Multnomah County Duniway-Lovejoy Elections Building
1040 SE Morrison Street, Portland, OR 97214



@MultCoElections



Facts to Know about Voting and Elections

Who can register to vote in Oregon? You can register to vote if you are a resident of Oregon, you are a citizen of the United States, and you are at least 16 years old. You will get your first ballot in the mail when you are 18. You must register to vote 21 days before Election Day to be able to vote in that election.

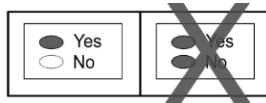
How do I register to vote? Register to vote online with the Secretary of State oregonvotes.gov/myvote or by filling out a paper *Oregon Voter Registration Card*. You can get a paper card at the elections office, your public library, Oregon DMV or post office. You can also be signed up to vote as part of the Oregon Motor Voter Automatic Registration process through certain DMV interactions, but it will not happen right away.

How does vote by mail work? All elections in Oregon are conducted by the county elections office. The elections office mails ballots directly to voters. Voters complete their ballots, and then return them to the county elections office in the mail or by putting them into an official ballot drop box.

Vote by mail in a few simple steps:

1. Register to vote before the registration deadline. You will get a Voter Notification Card in the mail confirming that you are signed up to vote.
2. Four weeks before the election, you will receive a Voters' Pamphlet in the mail.
3. Two weeks before the election, you will receive your ballot in the mail. If you do not get a ballot, contact the elections office for a new ballot.
4. Vote by filling out your ballot. You can ask for help with marking or understanding your ballot. Use a blue or black pen to mark your choices. You can leave something blank. You can write in a candidate for any race. If you make a mistake or lose your ballot contact the elections office for a new ballot.
5. Put your ballot in the return envelope. Check that your name and address are correct. You must **sign the return envelope** for your vote to count. If you are not able to sign because of a disability call the elections office for help.
6. Return your ballot by 8:00 PM on Election Day. You cannot change your vote once you have returned it.

How do I vote my ballot? Find the candidate or measure response (YES or NO) of your choice. Completely darken the oval to the left of your choice with blue or black ink. To vote for a write-in candidate who does not appear on the ballot, completely darken the oval to the left of the line provided for the office and write the full name of the candidate on that line. Make sure you have correctly marked your choice for each contest. Your official ballot will contain contests printed on both sides. Place the ballot in the return identification envelope. You may use the optional secrecy sleeve. Election staff protects the secrecy of your ballot. **Read the Voter's Statement on the return envelope and sign it on the signature line.** Your ballot will not be counted if the return envelope is not signed. Every signature is checked against the registration signature on file and the signatures must match for the ballot to be counted.



If you vote for more candidates than allowed for an office or if you vote **both** Yes **and** No on a measure, it is called

an overvote and your vote **will not count** for that contest. **If you make a mistake or change your mind while marking your ballot**, you may request a replacement ballot from the elections office or you may make your changes on the ballot. **Make your choice obvious** so that election workers inspecting each ballot can make sure your intent is understood and counted correctly. Two examples of how to make your voter intent clear are below. Contact the Elections office if you make a mistake, your ballot is damaged or lost or for any other reason.



Return Your Ballot

You can vote and then return your ballot as soon as you receive it. Mail your ballot with a first-class stamp or drop off your ballot at an official drop box site. Ballots must arrive at the elections office or be put inside an official drop box in Oregon by 8:00 PM on Election Day, March 13, 2018. If you mail your ballot, make sure to do so five days before Election Day to make sure that it will arrive on time. **Postmarks do not count.**

Drop sites below are open for the March 13, 2018 Special Election and are the most convenient locations for voters in the Tualatin Valley Fire & Rescue District. Ballots dropped off at Washington County drop sites will be delivered to Multnomah County Elections.

24-Hour Official Drop Box locations for March 13, 2018 Election

The following drop sites are open 24 hours and will be available after ballots are mailed out. They will remain open until 8:00 pm Election night.

- **Multnomah County Elections Office**
1040 SE Morrison St, Portland
24-hour ballot drop slot available to pedestrians on the north side of the building. Parking available on SE 11th and SE Morrison.
- **North Plains City Hall**
31360 NW Commercial St, North Plains
- **Washington County Elections Office**
(Service Center East Building)
3700 SW Murray Blvd, Beaverton

Washington County Library Drop Box locations for March 13, 2018 Election

The following inside library drop sites boxes are available during normal library hours listed below and will be open until 8:00 pm on Election Day.

- **Cedar Mill Community Library**
12505 NW Cornell Rd, Portland
Mon. – Fri. 10:00 AM – 8:00 PM, Sat. 10:00 AM – 5:00 PM, Sun. noon – 5:00 PM
- **West Slope Community Library**
3678 SW 78th Ave, Portland
Mon. – Thur. 9:30 AM – 8:00 PM,
Fri. – Sat. 9:30 AM – 4:00 PM, Sunday Closed



Do you need help voting in your native language? Interpretation services are available at no cost to you.

¿Necesita ayuda para votar en su idioma materno? Hay servicios de interpretación disponibles sin costo.

Quý vị có cần sự trợ giúp bỏ phiếu bằng ngôn ngữ của mình hay không? Có sẵn các dịch vụ thông dịch được cung cấp miễn phí cho quý vị.

您在投票时是否需要母语帮助? 可以免费为您提供口译服务。

Вам нужна помощь при голосовании на вашем родном языке? Услуги устного языкового перевода предоставляются вам бесплатно.

Ma u baahantahay caawinta aad ku codeyneysid luuqaddaada hooyo? Adeegyada turjubaanka waxaa laguugu helayaa lacag la'aan.

هل أنت في حاجة إلى مساعدة للتصويت بلغتك الأم؟ توجد خدمات ترجمة فورية متاحة لك مجاناً.

모국어로 투표 관련 안내를 받고자 하시는 경우, 무료 통역 서비스를 받으실 수 있습니다.

Kailangan mo ba ng tulong sa pagboto gamit ang sarili mong wika? May makukuha kang libreng mga serbisyo sa pagsasalin.

貴方の母国語で投票するにあたって、手助けが必要ですか? 通訳サービスは無料で利用できます。

Multnomah County Elections
503-988-3720 | elections@multco.us
www.mcelections.org

Multnomah County Voters' Pamphlet

Measure #34-280 - Tualatin Valley Fire & Rescue District (TVF&RD)

Ballot Title

Annexation of City of Newberg Territory by TVF&R

Question: Shall Tualatin Valley Fire and Rescue annex the City of Newberg territory to provide fire, emergency medical, and ambulance services?

Summary: In 2016, the City of Newberg signed a two-year contract with Tualatin Valley Fire and Rescue District (TVF&R) to provide fire protection, advanced emergency medical, and ambulance services. During the contract, elected leaders of TVF&R and Newberg evaluated the feasibility and cost-benefit of annexation. In June 2017, the Newberg City Council approved annexation to TVF&R, subject to voter approval. Voters residing within the City of Newberg voted on the question of annexation to TVF&R in Yamhill County measure 36-190. The outcome of that November 8, 2017, election was 69.32% in favor of annexation.

This measure seeks approval of the annexation from voters residing in TVF&R's existing service area. Once annexed, the City of Newberg residents will pay the same tax rate as existing TVF&R patrons. They will also become eligible to vote for TVF&R directors and on any future TVF&R property tax proposals. This measure will not increase taxes paid by existing TVF&R patrons.

Explanatory Statement

Approval of this measure would annex all the territory within the City of Newberg into Tualatin Valley Fire and Rescue. Annexation was proposed by the elected bodies of TVF&R and the City of Newberg. Voters residing within the City of Newberg voted on the question of annexation to TVF&R in Yamhill County Measure 36-190. The outcome of that November 8, 2017 election was 69.32% in favor of annexation.

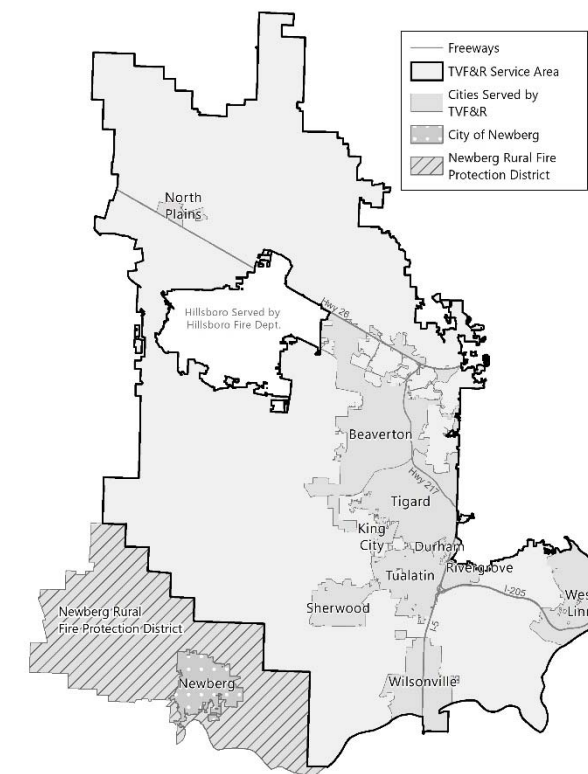
If TVF&R voters also approve annexation of the City of Newberg territory, the City of Newberg residents will pay the same tax rate as current TVF&R residents beginning July 1, 2018. They will also become eligible to vote for TVF&R directors and on any future TVF&R property tax proposals. TVF&R's combined tax rate is \$2.0799, which includes a permanent tax rate of \$1.5252 per \$1000 of assessed valuation, a local option levy of \$0.45 (expiring in 2020), and a bond levy of \$0.1047.

Approval of this measure will not increase taxes for existing TVF&R residents and could possibly decrease the rate paid on bonded debt. TVF&R will also receive all fire and emergency response assets such as fire stations, equipment, and apparatus, from the City of Newberg.

TVF&R's history is based on similar voluntary and mutually beneficial annexations. TVF&R took shape between 1972 and 2016, as a number of city fire departments and rural districts consolidated to share limited resources and save money. TVF&R achieves cost savings through economies of scale such as buying trucks and equipment in bulk, reducing administrative overhead, and leveraging a system of response to strategically locate stations, resources, and personnel.

A "yes" vote approves annexation. A "no" vote rejects annexation.

Submitted by:
Cassandra Ulven, Public Affairs Chief
Tualatin Valley Fire & Rescue District



No arguments in favor or opposition to this measure were filed.