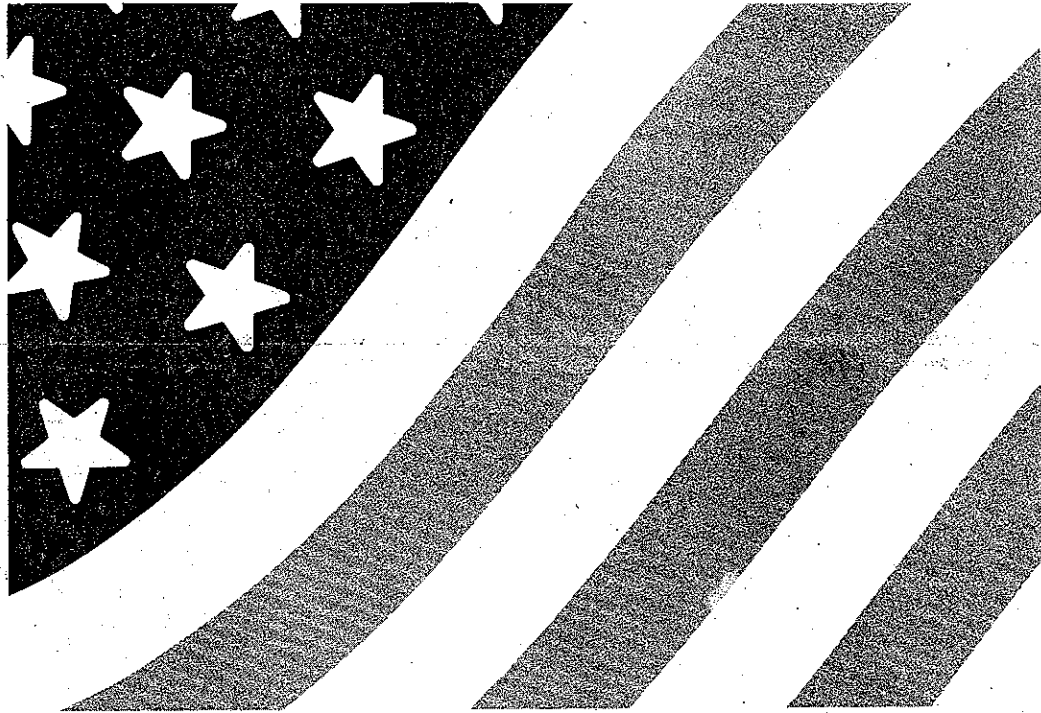


**D - BONNEVILLE-CORBETT-GRESHAM/
BARLOW-REYNOLDS SCHOOL DISTRICTS
(14, 20, 23, 24, 25, 27, 49, 51, 53, 63, 64, 65, 67, 68,
69, 72, 74, 75, 76)**



MULTNOMAH COUNTY VOTERS' PAMPHLET

VOTE-BY-MAIL ELECTION - MARCH 28, 1995

Dear Multnomah County Voter,

For your convenience, we have included this voters' pamphlet with your ballot. By doing so, there is also cost savings for the election.

The voters' pamphlet contains candidate and measure information for several districts, but your **BALLOT** will have only those candidates and measures for the area where you live.

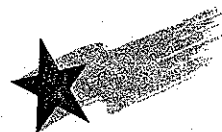
Candidates may or may not choose to be in the voters' pamphlet. For Fire and Water Districts that have races with more than one candidate we have included the "Required Information" supplied on the candidate's filing form. We hope that you find this helpful.

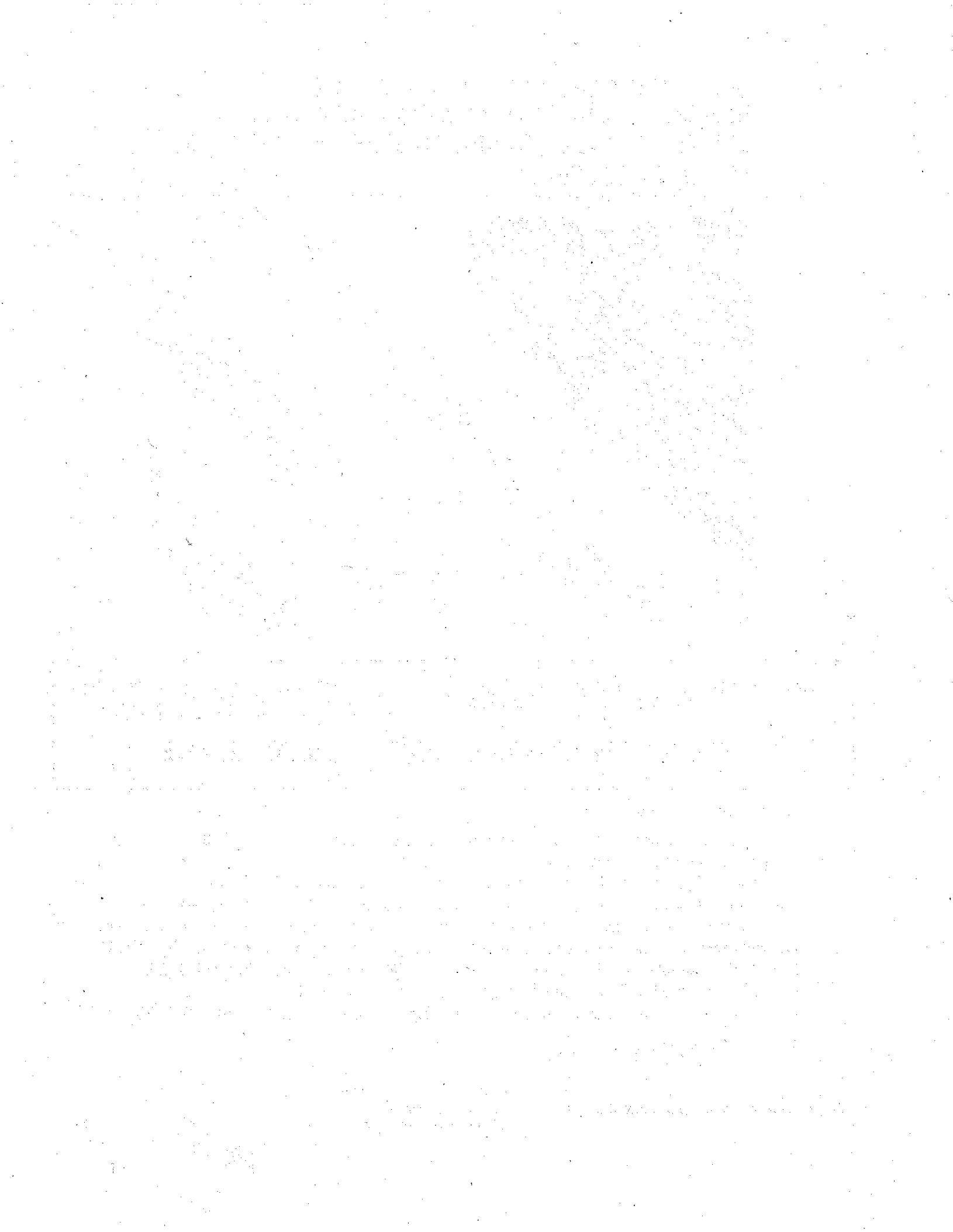
- Voted Ballots **MUST** be in our Office by **8:00 P.M. March 28th to be counted.**
- If you have any questions about voting or getting a replacement ballot, call: 248-3720.

Vicki K. Ervin, Director of Elections

This pamphlet produced and distributed by:

Multnomah County Elections
1040 S.E. Morrison Street
Portland, Oregon 97214-2495

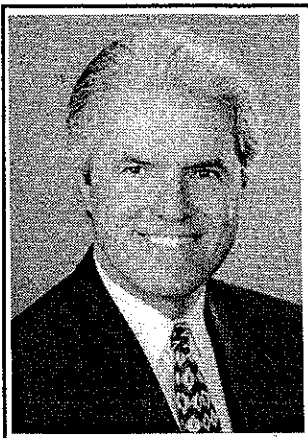




MULTNOMAH COUNTY

County Sheriff

County Sheriff



**JOHN
BUNNELL**

OCCUPATION: Sheriff, Multnomah County.

OCCUPATIONAL BACKGROUND: With Multnomah County Sheriff's Office: Chief Deputy, Corrections Division; Chief Deputy, Services Branch; Commander, Inspections Unit; Commander, Civil and Law Enforcement Records Units; Commander, Multi-Agency Drug Task Force; Unit Supervisor, Narcotics and Vice; Uniformed Patrol.

EDUCATIONAL BACKGROUND: B.S., Oregon State University, 1968; Metro Police Academy, 1969; Board of Police Standards and Training, Supervision Certificate, 1973, Advanced Certificate 1975; FBI National Academy, 1991.

PRIOR GOVERNMENTAL EXPERIENCE: Oregon National Guard, 41st Brigade, 1967-1973.

SHERIFF JOHN BUNNELL - THE EXPERIENCED CHOICE

John Bunnell is the only candidate for Sheriff with real experience in all areas of the Multnomah County Sheriff's Office. The winner of the Multnomah County Sheriff's Award of Valor, John Bunnell has proven his dedication, courage and integrity.

"His undercover work and leadership...have been credited by some with making the sheriff's office one of the most productive agencies in the country, and tops in the Northwest."

-The Oregonian 11/30/94

JOHN BUNNELL-LEADER, AN INNOVATOR FOR CHANGE

John Bunnell has the insight, dedication and intelligence to seek out workable solutions that will benefit the voters of Multnomah county. Under his leadership you can expect quality service in public safety and responsive solutions that deal with real problems.

JOHN BUNNELL-THE OVERWHELMING CHOICE

John Bunnell has won the enthusiastic support of law enforcement professionals and citizens.

Here are just some of them:

Former Multnomah County Sheriffs Bob Skipper and Fred Pearce • Clackamas County Sheriff Ris Bradshaw • Columbia County Sheriff George Hullt • Marion County Sheriff Robert Prinslow • Lane County Sheriff Robert McManus • Yamhill County Sheriff Lee Vasquez • Gresham Chief of Police Art Knori • Milwaukie Chief of Police Brent Collier • Beaverton Chief of Police David Bishop • Senator John Lim • Troutdale Mayor Paul Thalhofer • Wood Village Mayor Don Robertson • Maywood Park Mayor Greg Steffen • Multnomah County Deputy Sheriffs Association • Multnomah County Command Officers Association • Multnomah County Corrections Officers Association • Multnomah County Commissioner Sharron Kelley.

(This information furnished by John Bunnell)



**MARK A.
HANSON**

OCCUPATION: Sergeant; Clackamas County Sheriff's Office.

OCCUPATIONAL BACKGROUND: Sergeant/Corrections Div., Clackamas County; Senior Officer, Federal Bureau of Prisons; Sergeant reserve, Aurora Police Department; Sergeant reserve, Portland Police Bureau.

EDUCATIONAL BACKGROUND: Board on Public Safety Standards and Training, Supervisor Course; Board on Public Safety Standards and Training, Correctional Supplemental Course; Federal Law Enforcement Training Center, Federal Bureau of Prisons Academy; Portland Community College.

PRIOR GOVERNMENTAL EXPERIENCE: Appointed Member; Oregon Department of Corrections, Oregon State Correctional Institution Steering Committee Conference.

**FOR YOUR SAFETY AND FUTURE
VOTE EXPERIENCE!!**

Mark Hanson is the ONLY candidate for Sheriff with experience in both Corrections and Law Enforcement. Mark not only has County experience but City and Federal Government experience also.

LEADERSHIP AND VISION

Multnomah County is releasing more criminals to the street than is necessary. Recently a Corrections Conference labeled the Sheriff's office as having "the most liberal release system" in the nation. (*Oregonian* 12-15-94) It's going to take someone with Integrity, Leadership and Vision to correct this dangerous problem and restore safety to the community. Mark Hanson has these qualities. Mark Hanson will bring new ideas and a fresh approach to Law Enforcement in Multnomah County.

IT'S TIME FOR CHANGE!

MARK HANSON WILL...

- Return accountability to the Multnomah County Sheriffs Office.
- Work at replacing the dangerous release policy currently in use, restoring safety to our community.
- Work at increasing jail beds by using money saved from past transfers of personnel to Portland and Gresham.
- Consolidate Jail operations to better utilize personnel in other areas. This will increase Officer safety along with inmate safety.
- Start programs designed to modify inmate behavior. Which is the first step towards rehabilitation.
- Help build communities that promote public safety and prevent crime.

MARK A. HANSON ENDORSED BY

The American Federation of Government Employees Local 3979;
The Clackamas County Peace Officers Association

LEADERSHIP AND INTEGRITY-VOTE FOR MARK A. HANSON

(This information furnished by Mark A. Hanson)

MULTNOMAH COUNTY

County Sheriff



**DAN
NOELLE**

OCCUPATION: Assistant Chief, Portland Police Bureau, 1993-Present.*

OCCUPATIONAL BACKGROUND: Portland Police Bureau; Top management for 14 years: Deputy Chief; Commander of Detectives; Commander of Central Precinct and Commander of East Precinct; Public Information Officer, 3 years; street officer and detective for 12 years.

EDUCATIONAL BACKGROUND: Bachelor's, Administration of Justice, Portland State, 1975. Master's, Public Administration, Portland State, 1978.

PRIOR GOVERNMENTAL EXPERIENCE: Portland Police Bureau, 29 years.

Mike Schruck, District Attorney of Multnomah County, on why we should elect Dan Noelle Sheriff:

- "We need Dan Noelle's leadership ability, commitment and integrity to make the Sheriff's office a major contributor to maintaining public safety."

- "Dan Noelle is the only candidate for Sheriff with extensive experience as top manager of a law enforcement agency."

- "I'm voting for Dan Noelle because he will make a difference in keeping dangerous criminals off the streets."

Elect Dan Noelle for Sheriff of Multnomah County

Dan Noelle says:

- "It is time to focus the Sheriff's office on its primary mission: providing the beds to keep dangerous criminals in jail, so we can all feel safe on the streets and in our homes."

- "We must provide for more jail beds immediately and, at the same time, make the most cost-effective use of every crime-fighting dollar."

Dan Noelle already has identified ways to increase beds at existing county jails, so the county can stop releasing dangerous criminals before their sentences end.

- "By eliminating duplication and cutting administrative fat, the Sheriff's office can make more jail beds available."

Dan Noelle has the 14 years of top management experience in law enforcement and the leadership ability to make the Sheriff's office a vital force in keeping our homes and streets safe from criminals.

- "With strong leadership in the Sheriff's office, we can dramatically improve our community's public safety."

Dan Noelle also has been endorsed for Sheriff by former Portland Police Chiefs Dick Walker and Ron Still, the Portland Police Association, and former Portland City Council Member Mildred Schwab.

(This information furnished by Dan Noelle for Sheriff)

County Sheriff



**VERA
POOL**

OCCUPATION: Corrections Lieutenant, Multnomah County Sheriff's Office.

OCCUPATIONAL BACKGROUND: Veterans Administration, Food Services, Academy Instructor for State of Oregon.

EDUCATIONAL BACKGROUND: Grant High School; Portland Community College, A.A. Degree; University of Portland, B.A. Degree; University of Portland, M.A. Degree; University of Portland, M.S. Degree.

PRIOR GOVERNMENTAL EXPERIENCE: Board on Public Safety Standards and Training (BPSST) appointed, served 8-years. Academy Instructor for State of Oregon/7-years.

On April 25, 1994, the *Oregonian* said "Lt. Vera Pool is prepared and eager to change the direction of the Sheriff's Office...She clearly is pointing in the direction that Multnomah County should move..."

Vera Pool has over 24 years experience in Corrections, including 15 years in command/management positions. She is committed to programs for at-risk juveniles which divert them from a career of crime. She believes community policing and neighborhood participation will enable the implementation of more effective anti-crime programs.

Vera Pool's professional affiliations and community associations will help her work toward successful partnerships between the Sheriff's Office and other law enforcement agencies. She plans to implement improved programs within the criminal justice system to change criminal behavior and will institute rehabilitative programs to decrease recidivism. She will also develop anti-crime programs to protect law-abiding citizens, while continuing to incarcerate those who commit crimes in our community.

Vera Pool strongly believes we have an opportunity to make a difference in Multnomah County. Her plan will recover more than two million dollars in wasted tax dollars to reinvest in our communities, while improving the level of public safety in our neighborhoods. She is the experienced leader who can best implement the wishes of the voters expressed in measures 11 and 17.

Vera Pool is an experienced, respected public servant with a proven track record - the best candidate for Sheriff of Multnomah County.

Endorsed by: Representatives Fahey, Naito, Gordly, Carter; Senator Springer; and Commissioners Charlie Hales and Gretchen Kafoury.

(This information furnished by the Committee to Elect Vera Pool for Sheriff of Multnomah County)

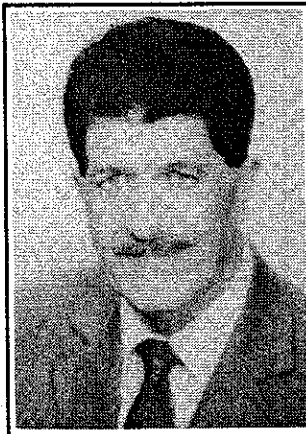
MULTNOMAH EDUCATION SERVICE DISTRICT

Director: Pos. 6, At Large

Director: Pos. 6, At Large

No Photo
Submitted

**JIM
DAVIS**



**BILL
GRENFELL**

OCCUPATION: Neighborhood Businessman.

OCCUPATIONAL BACKGROUND: Assistant Professor, University of Wisconsin, Lecturer, Marquette University, Assistant Manager, Portland Civic Auditorium.

EDUCATIONAL BACKGROUND: Portland State University, M.I.T.

PRIOR GOVERNMENTAL EXPERIENCE: Board member, Multnomah Education Service District Elected.

He's short on talk and long on action.

RETURN JIM DAVIS TO THE BOARD.

JIM DAVIS GETS THINGS DONE.

IN HIS FIRST TERM:

1. Davis initiated Oregon House Bill 2572, saw it become law, and it has saved thousands of dollars for taxpayers.
2. Davis led the battle which saved Outdoor School from closure.
3. Davis refused to take expense money when serving on the board. Unlike the incumbent who has taken thousands of dollars, Davis paid his own way.

JIM DAVIS IS FOR:

1. Education that exercises minds and bodies not just massages egos.
2. Budgets that meet the real needs of our students and their teachers not administration empire building.
3. Honest community participation in schools so as to meet that community's educational expectations.

JIM DAVIS IS AGAINST:

1. The Oregon Educational Reform Act: Davis says, "the ideal of educational reform should be to produce a sound mind in a sound body. This Act does neither. On its face, it's politics, it's money, but it's not reform. The Act could cost over a billion dollars yet, be the greatest 'dumbing down' of our schools since 'whole word reading' and 'new math'."

"LET US PUT OUR MINDS TOGETHER AND SEE WHAT LIFE WE CAN MAKE FOR OUR CHILDREN."

*Sitting Bull
Lakota Sioux
1877*

(from Utne Reader Nov. 1994)

(This information furnished by 8 1/2 Friends of Jim Davis)

OCCUPATION: Retired.

OCCUPATIONAL BACKGROUND: Portland Firefighter; Small Businesses Owner, Longshoreman; Military, USN and USAF (Flight Status).

EDUCATIONAL BACKGROUND: Portland Public Schools; Portland State Graduate, B.S. and 5th year; University of Oregon, University of Idaho Military and Firefighting Schools.

PRIOR GOVERNMENTAL EXPERIENCE: Oregon State Senator and Representative (Elected); Portland Community College Director (Elected); Multnomah Education Service District Director (Elected); Portland Fire Department (Civil-Service Appointment); USN (Wartime, Active, Flyer) USAF (Wartime, Active, Flyer).

BILL GRENFELL ON EDUCATION AND TAXES: No Sales Tax (Dead Issue) Lower home taxes: Restore Homeowner and Rental Rebates: Lottery money should go to school districts directly: Promote efficiency in Schools: Get rid of bureaucratic bloated middle-management.

ALL SCHOOL EMPLOYEES (Teachers, Administrators, Janitors, Bus drivers, etc.) should be screened by police and FBI.

ALL TEACHERS should be required to pass subject and method tests every six years.

I REPEAT: The major share of lottery money profits should go directly to K-to-12 public schools and community colleges only.

GRENFELL ON CRIME: Three violent crimes, you're out; Build more prisons (federal grants); Compulsory G.E.D. prison schooling (over 50% of inmates are functionally illiterate, making them unacceptable for employment and rehabilitation). Toughen parole and probation laws.

BILL GRENFELL PERSONAL: Memberships (past and present) Shriners, American Legion, Past Commander D.A.V., Firefighters Union, Longshore white card, A.F.A.M., Elks.

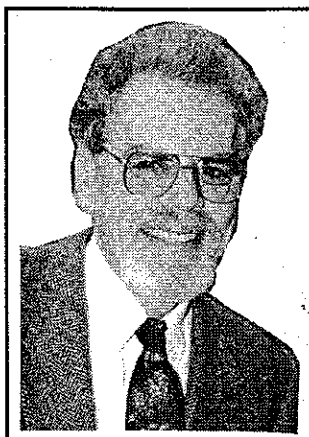
Grenfell's children are all doing fine: school work, military, and families.

(This information furnished by The Grenfell Committee, Co-Chairmen, Steven W. Grenfell, Paul D. Grenfell, Jon A. Grenfell)

MULTNOMAH EDUCATION SERVICE DISTRICT

Director, Pos. 6, At Large

Director, Pos. 6, At Large



**SY.
KORN BRODT**



**CAROL
MOORE**

OCCUPATION: Adult Parole and Probation Officer, Oregon Department of Corrections.

OCCUPATIONAL BACKGROUND: Former President, Federation of Oregon Parole and Probation Officers; Adult Parole Agent, California Department of Corrections; Special Agent, U.S. Treasury Department.

EDUCATIONAL BACKGROUND: University of West Los Angeles, School of Law, LL.B. - 1971.

PRIOR GOVERNMENTAL EXPERIENCE: Member, Grant High School Site Council, 1994 to Present; Chair, Grant Cluster Advisory Committee, 1993-1994; Portland Metropolitan Area Local Government Boundary Commission, 1988 to Present; Governor's Special Commission Against Violent Crime, 1982-1983; Board Member, Beaumont Wilshire Neighborhood Association, 1987 to Present.

SY KORN BRODT married to Mary Lou, their son Joe graduated from Grant High School in 1985 and their son Charlie is in 9th Grade at Grant. Sy is a U.S. Navy veteran.

SY KORN BRODT WILL FIGHT FOR maintaining important MESD programs such as Teen Moms, Outdoor School, Alternative Schools, TAG programs and Special Education all in the **MOST COST EFFECTIVE MANNER.**

SY KORN BRODT will represent all of the district, from Bonneville to the Washington County line.

You know **SY KORN BRODT** can do the job because he is supported and endorsed by:

- | | | |
|-----------------|------------------|------------------|
| Gary Blackmer | Mike Fahey | Ben Priestley |
| Kate Brown | Avel Gordly | George Rankins |
| Mike Burton | Gretchen Kafoury | Anitra Rasmussen |
| Margaret Carter | Mike Lindberg | Lonnie Roberts |
| Ron Cease | Bill McCoy | Mike Schrunck |
| Barbara Clark | Hank Miggins | Frank Shields |
| Tanya Collier | Lisa Naito | Dick Springer |
| George Eighmey | Fred Neal | Bev Stein |

SY KORN BRODT is supported and endorsed by these Labor Organizations: AFSCME LOCAL 1995 (MESD Employees) • Federation of Oregon Parole and Probation Officers • International Brotherhood of Electrical Workers, Local #48 • Shipwrights Local 611 • Metal Trades Council of Portland & Vicinity.

SY KORN BRODT is actively involved in the Public Schools as a Parent and Site Council Member. **SY KORN BRODT** is the only candidate who is not either a past or current member of the MESD Board. **SY KORN BRODT** will bring a needed FRESH INNOVATIVE PERSPECTIVE in these times of rapid changes in our children's education!

SY KORN BRODT wants to hear from YOU! Call him at 287-8463. **FOR KIDS' SAKE - VOTE FOR SY KORN BRODT!**

(This information furnished by Sy Korn brodt)

OCCUPATION: Office Manager for Oregon Association of Tax Consultants.

OCCUPATIONAL BACKGROUND: Secretary and Member Services Clerk for Waverley Country Club; Owner and Operator of a small business in Multnomah County.

EDUCATIONAL BACKGROUND: Washington High School, Mt. Hood Community College.

PRIOR GOVERNMENTAL EXPERIENCE: Currently serving on the Multnomah Education Service District Board Member completing second term. 12 years, Centennial Board of Directors, 2 years Pleasant Valley School Board.

CAROL MOORE, a native Oregonian living in Multnomah County the past 40 years, has been active on local school boards for the past 20 years.

As your ESD Director I will work for:

- Cost effective Regional Services.
- Link services from Local, Regional, County and State to avoid costly duplication of resources.
- Foundation funding of Academic All Stars and Outdoor School.
- Local Control for ESD resolution services.

"Education is facing the last round of cuts from Measure #5. More than ever before we must do more with less. My 20 years experience is needed to provide the needed services to schools in the most cost effective way. My experience with public budgets and finance prepares me for this tough job."

CAROL MOORE has served the community as: Chairman of the Multnomah ESD Board of Directors, 8 years member; 3 Times Chairman and Vice Chairman of the Centennial Board of Directors, 12 years member; Director, Oregon School Board Association, 5 years; Legislative Member, Oregon School Board Association, 7 years; Blue Ribbon Member for Mt. Hood Community College, Athletic and Activities Commission; Member of Pleasant Valley Neighborhood Association; Member of the Multnomah County Alternative Revenue Committee; Member of Columbia Ridge Handicap Council.

CAROL MOORE, has the background and experience to get the job done! Re-elect her to the Multnomah Education Service District Board of Directors.

(This information furnished by The Committee to Elect Carol Moore)

MULTNOMAH EDUCATION
SERVICE DISTRICT

MT. HOOD COMMUNITY COLLEGE

Director, Pos. 6, At Large

Director, Zone 4

No Photo
Submitted

JOHN
SWEENEY

OCCUPATION: Facilities and Maintenance Supervisor - Parks.
Portland Parks and Recreation May, 1965 to Date.

OCCUPATIONAL BACKGROUND: Oregon Army National Guard,
February 1956 to August 1958; U.S. Army Reserve, August 1958
to March 1964; Oregon Army National Guard, April 1965 to April
1985; Started as a Private and retired as a Captain.

EDUCATIONAL BACKGROUND: Guieles Lake Grade School;
DuPont Grade School; Kellogg Grade School; Benson Tech High
School; Kubasaki American High School, HS Diploma; Portland
Community College, A/AS, MGMT/SPVN.

PRIOR GOVERNMENTAL EXPERIENCE: Director, Multnomah
Education Service District, July 1979 thru June 1987.

I served as a Director on the Multnomah Education Service
District, Board of Directors from July 1979 thru June 1987. I enjoyed it
very much and would like to return to the job of Director, MESD. The
eight years (two terms) were very rewarding, and it would be an
honor to be returned to the position of Director, Multnomah
Education Service District. Your vote counts and I would be glad to
have your vote, and will do a good job for you.

(This information furnished by John Sweeney)

BOB HAYS

OCCUPATION: 1986-Present: General Manager, Brattain Idealease
(Paid).

OCCUPATIONAL BACKGROUND: 1971-1983: Diesel Truck
Mechanic, (Paid); 1983-1986: Service Manager, Brattain
Idealeasing, (Paid).

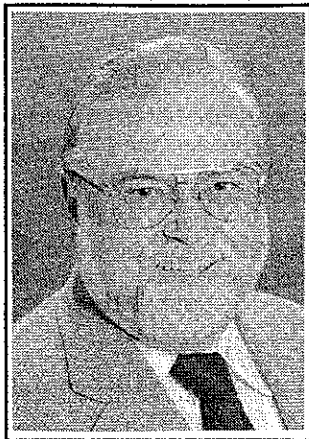
EDUCATIONAL BACKGROUND: Wickliffe High School, Cleveland,
Ohio, Graduate, Grade 12.

PRIOR GOVERNMENTAL EXPERIENCE: Citizens Advisory
Committee, David Douglas School District (Appointed); Budget
Committee, David Douglas School District (Appointed).

**If you know
someone that is
sight-impaired,
please inform them
that an audio tape
of this pamphlet
can be obtained at
no-cost by calling:
Independent
Living Resources
(284-3339)**

MT. HOOD COMMUNITY COLLEGE

Director, Zone 5



**BOB
DAVIS**

OCCUPATION: Real Estate Broker, President, The Prudential
Homefolk Realtors.

OCCUPATIONAL BACKGROUND: Lieutenant Colonel, US Air
Force; Political Science Instructor, Portland Community College.

EDUCATIONAL BACKGROUND: Graduate, Jefferson High School,
Portland, Oregon; B.S. University of Oregon, Eugene, Oregon;
Graduate student, two years, Portland State University, Portland,
Oregon.

PRIOR GOVERNMENTAL EXPERIENCE: Member, Board of
Directors, Mt. Hood Community College, Elected 1971, Re-elect-
ed 1975, 1979, 1983, 1987, 1991.

It has been my good fortune to serve the citizens of my District for many years as a member of the Board of Directors of Mt. Hood Community College. I have considered this my principal duty to my community.

The Community College serves our area by providing top quality education and training. Our students find the ways to enrich their lives and increase their professional and occupational skills. The College strives to operate in a cost-conscious and efficient manner in the delivery of these services. As a Board Member, I seek to apply a common sense approach to the issues we face, with emphasis on the needs of our local residents.

(This information furnished by Bob Davis)

Director, Zone 5



**JAMES R.
KEYES**

OCCUPATION: Owner Small Business (Power Steering Specialty).

OCCUPATIONAL BACKGROUND: Management Ron Tonkin Family
of Dealerships; Sales Rep. National Sanitary Supply.

EDUCATIONAL BACKGROUND: Parkrose High School, 12; Mt.
Hood Community College.

PRIOR GOVERNMENTAL EXPERIENCE: None.

Dear Neighbor,

Today, we are challenged to make sure MHCC operates on a lean budget, while at the same time offering quality higher education to East County residents.

I am asking for your vote so we can meet this challenge.

Many of our neighbors find they need additional knowledge and skills to make a decent living. They turn to MHCC for the added education because it is more affordable and they can still live at home.

On a personal note, some time ago my uncle developed cancer and within five months was gone. His widow needed to acquire new knowledge and skills to support her small family. She enrolled at MHCC and has earned straight "A's".

We're grateful that MHCC is available to her. And in return, I want to be sure MHCC will be ready for us all—for you and your family and for mine—when the time comes.

As your representative on the MHCC Board, I will focus on **SEVEN PRIORITIES:**

- Make certain there is adequate short term funding for courses and support services.
- Obtain sponsors for 150 scholarships from businesses within the MHCC service area.
- Provide long term funding through establishment of an aggressive campaign to raise \$7,500,000 to endow MHCC. None of these funds will come from taxes.
- Expand cost-saving cooperative relationships with the business community and other institutions of higher learning.
- Ensure that student counseling and curricula prepare the student for the anticipated changes in the workplace in the 21st Century.
- Expand college credit study opportunities for motivated high school students within the MHCC service area.
- Explore the feasibility of establishing a Graduate Business Center on the MHCC campus.

Please, I need your vote to set in motion these priorities.

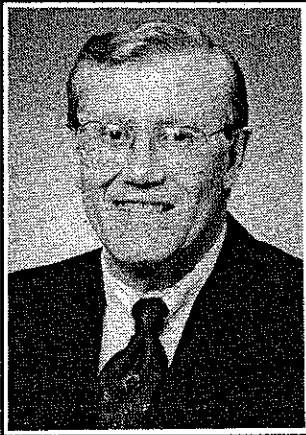
Sincerely,
James R. Keyes

*(This information furnished by James R. Keyes
for MHCC NOW and the future)*

MT. HOOD COMMUNITY COLLEGE

Director, Pos. 6, At Large

Director, Pos. 6, At Large



**RON
McCARTY**

OCCUPATION: Tax Consultant.

OCCUPATIONAL BACKGROUND: Tax Consultant; elected State Representative District 16 for 2 terms; Union Boilermaker in field construction; Small business owner 17 years; U.S. Army Reserve 21 years.

EDUCATIONAL BACKGROUND: Graduate study at Portland State University; B.S., Business Administration, Linfield College; Benson High School.

PRIOR GOVERNMENTAL EXPERIENCE: Elected to Mount Hood Community College Board of Directors; Active citizen as Tax Reform advocate; State Representative District 16 for 2 terms (Chairman of Sunset Review Committee, Member of Revenue and School Finance Committee, Member of Education Committee).

- The most important thing in solving problems is listening to all sides.
- Ron McCarty will sit down with you and listen to your concerns at any time.
- Call Ron at 253-3284 and meet him for coffee or tea and talk about it.
- Ron listens and acts. Let's get the job done—and done right!
- Ron is the most qualified person to deal with fiscal problems and the budget. He is a licensed Tax Consultant and has served on the State Revenue and School Finance Committee in the Oregon State Legislature.

Vote for Ron McCarty for the Mt. Hood Community College Director at Large

(This information furnished by Friends of Ron McCarty, Dr. Earle H. MacCannell, treas.)



**MARK D.
MILES**

OCCUPATION: Chief Executive Officer - Crown Research Corporation (Retirement Community Development Consultation).

OCCUPATIONAL BACKGROUND: Consultant; Writer; Public Speaker; Non-Profit Corporation Steering Committee; Public Servant.

EDUCATIONAL BACKGROUND: BS - Health Care Administration - Oregon State University; Post Graduate Studies - Public Administration - California State University, Stanislaus.

PRIOR GOVERNMENTAL EXPERIENCE: City of Gresham Planning Commission (1992 to Present); City of Gresham Fee Review Committee; Multnomah County Leadership Program (1993).

The social, political and educational climate that the College now finds itself in is different from what it was ten years ago, and different from what it was one year ago. Threats to the survival and health of any school are geared to sudden changes in its environment. However, challenges to a school's health are overlooked when we consider the slow, gradual changes that erode our understanding and our point of view. That is why we must be proactive in planning for the future, rather than simply responding to challenges only after our health and livelihood has been threatened.

A look at the recent history of secondary education, clearly shows that we can no longer operate on the premise of "business as usual." Not only have the educational needs of adults continued to grow and change, but the funding sources for these growing needs are much less clearly defined. It's easy to look at these changes as problems and easier yet to focus only on the short-term needs of the College, however a lasting response requires more creativity.

The College has taken strides in creating public/private partnerships. This allows the School, business community and local residents to collectively embrace the vision for our area's future. Yet, we cannot let this momentum slow. We must create our own future through an innovative marriage of mission, educational insight, funding partnerships and technology.

Creative solutions to the challenges facing the School today will lead to a stronger Mount Hood Community College tomorrow.

(This information furnished by Mark D. Miles)

BONNEVILLE SCHOOL DISTRICT #46

Director: Pos. 4

SHARON NOLIN

OCCUPATION: Oregon Dept. of Fish and Wildlife (Seasonal part-time), Oregon Heritage Wildlife Foundation (Seasonal part-time).

OCCUPATIONAL BACKGROUND: Multnomah Falls Lodge, United Medical Laboratories.

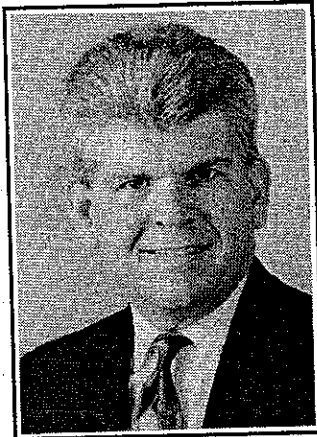
EDUCATIONAL BACKGROUND: Bonneville Grade School, 8, Cascade Locks High School, 4, Some College MHCC, 1.

PRIOR GOVERNMENTAL EXPERIENCE: 7 yrs Bonneville Grade School Board, 1 yr. Chairperson, 1 yr. Vice Chairperson, Currently Merger Committee Member w/Corbett, 2 yr. Budget Member Bonneville School.

**Your voted
ballot must be
in the Elections
Office by:
8:00 P.M.
March 28th
*(TO BE COUNTED)***

CORBETT SCHOOL DISTRICT #39

Director, Pos. 7, Zone 2



**ROBERT R.
YARDLEY**

OCCUPATION: Executive Director, Meridian Park Medical Foundation.

OCCUPATIONAL BACKGROUND: A seasoned professional in the fund raising field with a proven track record with more than nineteen years experience in the planning and management of personnel, budgets, fund raising, capital campaigns, and maintaining strong, positive public relations for a major non-profit corporation, an institution of higher education and healthcare foundation.

EDUCATIONAL BACKGROUND: George Fox College - Bachelor of Arts Degree in Management.

PRIOR GOVERNMENTAL EXPERIENCE: None.

Educational reform has been on the Oregon agenda for the last several years. The National Commission on Excellence in Education states that, "education was being eroded by mediocrity, that declines in performance is partly due to educational process, that public school curricula was inadequate, teachers were underpaid, under trained, under qualified and in short supply." Corbett faces some of these same challenges.

Restructuring school operations and professional relationships requires change. Change requires leadership. If elected I will work with the students, faculty, residents and colleagues on the school board to bring the necessary change that addresses the educational needs of our children.

(This information furnished by Robert R. Yardley)

Director, Pos. 6, Zone 2

RANDY BURBACH

OCCUPATION: General Manager-Twelve Mile Disposal Service, Inc.
OCCUPATIONAL BACKGROUND: Prior to 1985 Owner Southland Services Unlimited, Huntington Beach, CA.

EDUCATIONAL BACKGROUND: Grade: Harvey Scott Port, OR; High: Corbett High Corbett, OR; High: John Adams Port, OR; Jr. College: Golden West, Huntington Bch, CA; Degree: Administration of Justice; College: Long Beach State, Long Bch, CA.

PRIOR GOVERNMENTAL EXPERIENCE: None.

SANDRA HUSTON

OCCUPATION: Sr. Radiation Therapist/Dosimetrist at Portland Adventist Medical Center.

OCCUPATIONAL BACKGROUND: Radiation Therapist/Dosimetrist- Previously employed at Providence Medical Center, Portland; Queen's Medical Center in Honolulu, HI.; Queensland Institute, Brisbane, Australia.

EDUCATIONAL BACKGROUND: Quinnipiac College in Hamden, CT.; Yale-New Haven Hospital School of Radiotherapy.

PRIOR GOVERNMENTAL EXPERIENCE: Appointed to Corbett School Board, July 1994; Corbett School District Grade School Site Committee, Program Committee & "Creating the Future" Committee, NEMCCA Secretary, 1987-88.

Director, Pos. 7, Zone 2

JIM GRIFFIN

OCCUPATION: None

OCCUPATIONAL BACKGROUND: Reynolds Metals Company, Troutdale, Oregon.

EDUCATIONAL BACKGROUND: Western Culinary (Graduate); Mt. Hood C.C. (Graduate); Portland State (Freshman year); Reynolds High (12); Parkrose High (10); St. Threse (8).

PRIOR GOVERNMENTAL EXPERIENCE: Corbett School Dist. Budget Committee.

GRESHAM-BARLOW SCHOOL DISTRICT #10JT

Director, Pos. 2



**LAURIE
MONNES
ANDERSON**

OCCUPATION: Public Health Nurse Supervisor, Mother of two children, Elisa 17 and Matt 17; Treasurer for Oregon Public Health Nurse Supervisors; Rental Property Owner/Manager.

OCCUPATIONAL BACKGROUND: Public Health Nurse 12 years; Childbirth Educator 3 years; Research Biologist 6 years.

EDUCATIONAL BACKGROUND: Gresham High School-graduate; Willamette University-B.A.; Radford University-R.N., B.S.N.; University of Colorado-M.A.

PRIOR GOVERNMENTAL EXPERIENCE: Gresham Barlow School District Board; Gresham High School Parent Advisory Committee; Gresham Barlow School District Budget Committee; Healthy Start of Clackamas County; Clackamas County Human Services Wellness Committee, 1994; Barlow Gresham High School District Board 91-94; Barlow Gresham High School District Budget Committee 91-94; School Districts Unification Governance Task Force 93-94; Gresham Grade School District Advisory Committee 88-92; McCarty Middle School Open Forum Committee 88-92; Oregon City School District Advisory Planning Committee on Substance Abuse 90.

— LAURIE MONNES ANDERSON —

PROMOTER OF COST EFFECTIVE SCHOOLS

PROMOTER OF COMMUNITY BASED DECISION MAKING

PROMOTER OF DRUG AND VIOLENCE FREE SCHOOLS

PROMOTER OF QUALITY EDUCATION

Reasons to reelect Laurie Monnes Anderson

- open and honest
- believes in public education
- believes in the democratic process
- resident of Gresham over 20 years
- work experience with high risk children and youth
- committed interest in youth and in their positive development
- concerned with the welfare of each individual as well as the community at large

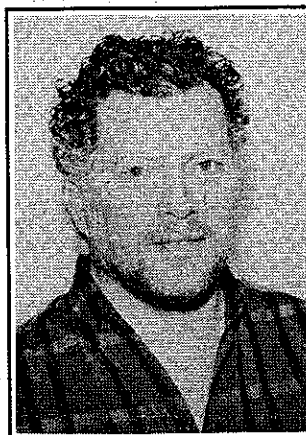
LAURIE MONNES ANDERSON
STANDS UP FOR HER PRINCIPLES AND WORKS
WELL WITH OTHERS

Reelect Laurie Monnes Anderson

LAURIE MONNES ANDERSON WILL WORK TO
IMPROVE OUR SCHOOLS

*(This information furnished by Committee to Reelect
Laurie Monnes Anderson)*

Director, Pos. 7



**LARRY
ECKMAN**

OCCUPATION: Marketing.

OCCUPATIONAL BACKGROUND: Correctional Counselor; Retail Management.

EDUCATIONAL BACKGROUND: San Francisco State University.

PRIOR GOVERNMENTAL EXPERIENCE: Vice-Chair Gresham-Barlow District Advisory Committee; Chair Food Service Advisory Committee; Co-President Highland Parent Teachers Club.

The Gresham-Barlow School District is faced with two specific requirements: 1) Making sure our kids are ready to meet the challenges of the next century and 2) Making sure our schools have the necessary support and resources to equip our kids to meet those challenges.

So how can we work together to meet these requirements? Through community partnerships. By establishing a seamless web of educators, businesses, parents and students we can attain today what due to failing resources once seemed unattainable.

Motivated by my own children's needs at our school, I became personally involved in organized, strategic programs with other parents, community leaders, students and educators. Bringing forth these innovative community partnership programs to our school, has resulted in:

- new levels of parental involvement;
- increased volunteerism;
- more nutritious food for our children;
- increased community and business involvement for needed resources;
- increased educational opportunities for our kids.

I believe these community partnerships are a necessary part of our educational future and desire to see successful programs such as these brought forth in our district.

My involvement as Vice-Chairperson of the *District Advisory Committee*, as Co-President of my *Parent Teacher Club* and as Chairperson of our district's *Food Service Advisory Committee* has already begun to move our district toward these goals. But there is more to be done.

I will be a tireless and motivated worker for community partnerships, seeking new and innovative ways to increase effectiveness in the education and learning process of our schools.

(This information furnished by Larry Eckman)

GRESHAM-BARLOW SCHOOL DISTRICT #10JT

Director, Pos. 7



**KATHERINE J.
RUTHRUFF**

OCCUPATION: Deli Manager Safeway Inc., Gresham, Oregon.
OCCUPATIONAL BACKGROUND: Homemaker, Community Volunteer.
EDUCATIONAL BACKGROUND: Oregon State University; Portland State University; Bachelor of Science.
PRIOR GOVERNMENTAL EXPERIENCE: Gresham Barlow School District Board appointed 1994; Barlow Gresham Extended Budget Committee; Barlow Gresham Unification Task Force; Damascus Union Schools Budget Committee.
 Clackamas County Commission On Children and Families; Chair, Clackamas County Great Start Kids Committee; Clackamas County Children And Youth Coordinating Council

- Keep Katherine Ruthruff on the Gresham Barlow School Board.
- Continue Katherine Ruthruff's fine work and advocacy for the entire Gresham Barlow School District.
- Continue to promote success for our children in their school achievement and in their future life choices.
- Continue to promote the well being of children and families in our district.
- Continue to make connections between our schools and the state and local commissions on children and families.
- Continue to assist in identifying new and additional revenue sources for our schools.
- Continue to promote the link between schools and businesses which will help insure the future success of our students after graduation.
- Keep Katherine Ruthruff on the Gresham Barlow School Board.

It was an honor and privilege to be appointed to the newly unified Gresham Barlow School Board last June. I wish to continue my work and share my talents with this new board and our community to promote the success of all our children as life long learners.

Sincerely,
Katherine J. Ruthruff

(This information furnished by Katherine J. Ruthruff for School Board Committee)

Director, Pos. 5 (1-yr. term)

DAVE CONE

OCCUPATION: Regional Manager-Harrington Property Management.
OCCUPATIONAL BACKGROUND: Property Manager-Western Heritage Development.
EDUCATIONAL BACKGROUND: BS University of Oregon, Psychology.
PRIOR GOVERNMENTAL EXPERIENCE: Gresham Grade School District Board of Directors (Incl. Chair); Barlow Gresham School District Board of Directors.



WHEN YOU ARE
FINISHED WITH THIS
VOTERS' PAMPHLET
PLEASE
RECYCLE
IT

GRESHAM-BARLOW SCHOOL DISTRICT #10JT

Measure No. 26-27

BALLOT TITLE

NOMINATION OF FOUR DIRECTORS FROM ZONES AND THREE AT-LARGE

QUESTION: Shall the district be zoned, with four directors nominated from zones, and three nominated at-large, all elected at-large?

SUMMARY: Measure authorizes school board to divide district into four zones as nearly equal in population as practicable, considering attendance areas where possible. Each zone would be represented by a director living in that zone but elected by all electors of the district. Three directors would be nominated and elected at-large, and could live anywhere in the district. The school board would adjust the zone boundaries following any change of district boundaries or a federal census.

EXPLANATORY STATEMENT

The Board of Directors of the Gresham-Barlow School District has placed a measure on the March 28, 1995, election ballot. If approved by the voters, the measure would create four zoned positions and three at-large positions for the seven seats on the School District Board.

Question:

Why did the Board decide to place the measure on the March 28 election ballot?

Answer:

The Board did so because there was a recommendation to hold an election included in the Gresham-Barlow District unification plan which the Board had previously approved and which the Board had pledged to implement, if possible.

Question:

How many zones will there be if the measure is approved?

Answer:

Under the proposal, there would be four zones and four of the seven Board positions would be assigned to a zone. In order to run for a zoned position, a person would have to live within that particular geographic zone. For the other three Board positions, a candidate could live anywhere in the district (i.e. be at-large). Whether the position is zoned or at-large, all registered voters within the district would be entitled to vote on all positions.

Question:

Generally, what are the areas covered by the zones?

Answer:

Three of the proposed zones encompass much of the area of the former Gresham Grade School District (i.e. within what is generally thought of as the City of Gresham); the fourth zone encompasses what were formerly the Orient, Damascus, Boring Districts and the north-eastern part of the Gresham Grade School District. Maps are available. Remember, the other three Board positions are at-large and represent no zones.

Question:

What will be the impact if Board zones are approved by the voters?

Answer:

Some believe that zones will guarantee representation from all areas

of the District; others believe that zones may limit the number of qualified candidates from certain parts of the District.

Still others believe that if a person lives in a particular zone, that person may be overly diligent in representing the interests of that zone rather than what is in the interest of the District as a whole.

There is no financial impact.

Question:

Why was the particular zone configuration currently being considered selected in the first place?

Answer:

By law, zones must be as equal as possible in terms of population (using data from the most recent Federal census). Any number of configurations could be developed, but because the majority of the population within the District lives within what is thought of as the city of Gresham, the outermost areas of the District together would have only one zone, no matter what the configuration.

Question:

Are other school districts in the area zoned? What has been their experience?

Answer:

Some districts in this area are zoned; the majority are not. There is no evidence as to whether or not a zoned district is better for students or is more representative of the interests of District patrons.

Submitted by

Bob Harland

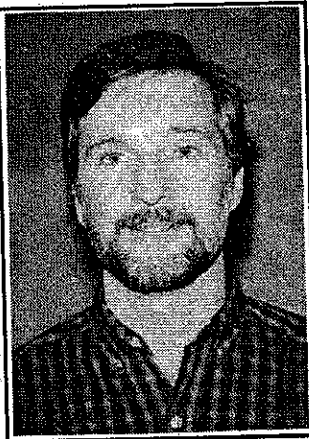
Gresham-Barlow School District

Administrative Services

No arguments FOR or AGAINST this measure were filed.

REYNOLDS SCHOOL DISTRICT #7

Director, Pos. 5



**JOEL A.
HUFFMAN**

OCCUPATION: Construction Superintendent.
OCCUPATIONAL BACKGROUND: 20+ years in the construction industry.
EDUCATIONAL BACKGROUND: Junction City High School, Junction City, OR, 1971; Lane Community College, Eugene, OR.
PRIOR GOVERNMENTAL EXPERIENCE: Reynolds School District Facilities Committee; Reynolds High School Advisory Committee; Davis Elementary 21st Century Site Council; Reynolds School District Calendar Committee.

I believe the students of Reynolds School District should receive a quality education in a good, safe environment.

This type of education is achievable when parents of students and the community as a whole become involved.

Let's work together to support the students of Reynolds School District as they prepare for the 21st century.

I am actively involved in the Reynolds School District. I care.

I believe I can be a strong and influential voice on the Reynolds School Board.

The educational system as we know it is changing. Now more than ever we need someone on the board who listens to the issues and makes wise, well thought out decisions.

Please support me with your vote for a better Reynolds School District.

(This information furnished by Joel A. Huffman)

Director, Pos. 5

GLEN OAKES

OCCUPATION: Owner & operator of Glen Oakes Nursery, Inc.
OCCUPATIONAL BACKGROUND: 30 yrs Middle School Teacher.
EDUCATIONAL BACKGROUND: Lewis & Clark College, MEd; University of Oregon BA.
PRIOR GOVERNMENTAL EXPERIENCE: None

Director, Pos. 7

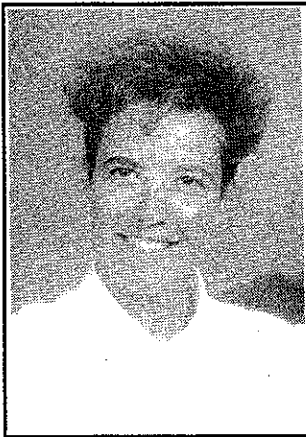
STEPHEN E. JOHNSON

OCCUPATION: Director of Educational Services for Oregon Public Broadcasting.
OCCUPATIONAL BACKGROUND: At Oregon Public Broadcasting since 1978. Part-time rug cleaner, Atiyeh's Inc., 1972-77. Medical Administration, Oregon Air National Guard, 1971-1977.
EDUCATIONAL BACKGROUND: University of Oregon, M.S., Instructional Technology, 1978; University of Oregon, B.S., Broadcast Communications, 1976; Grant High School, 1970.
PRIOR GOVERNMENTAL EXPERIENCE: Reynolds School Board, 1991-95 (Vice Chairman, 93-95); Steering Committee for Reynolds Systems Improvement Team, 1994-95; Reynolds Facilities Task Force, 1993-94; Reynolds Child Abuse Reporting Committee, 1991; Reynolds Budget Committee, 1989-91; Margaret Scott School Advisory Committee, 1987-89.

| CORBETT WATER DISTRICT | PLEASANT HOME WATER DISTRICT |
|---|---|
| Commissioner, Pos. 5 | Commissioner, Pos. 3 |
| <p style="text-align: center;">PETER GRANT</p> <p>OCCUPATION: Self Employed. OCCUPATIONAL BACKGROUND: Primarily Self-Employed. EDUCATIONAL BACKGROUND: Univ. of Colorado, B.S. Business, 1972; Western Cons. Baptist Seminary, M. Div. 1979. PRIOR GOVERNMENTAL EXPERIENCE: Precinctperson, 1988; Corbett Water Board, 1989-1993.</p> <hr style="border-top: 1px dashed black;"/> <p style="text-align: center;">EDITH B. MASTNE</p> <p>OCCUPATION: Retired. OCCUPATIONAL BACKGROUND: Property Manager, paid. EDUCATIONAL BACKGROUND: All education in Great Britain. PRIOR GOVERNMENTAL EXPERIENCE: 2 terms on Corbett Water Board, elected.</p> | <p style="text-align: center;">ROBERT CARLSON</p> <p>OCCUPATION: Self-employed Nurseryman. OCCUPATIONAL BACKGROUND: Same. EDUCATIONAL BACKGROUND: Lusted Grade School; Sandy High School; Oregon State College, 1 yr. PRIOR GOVERNMENTAL EXPERIENCE: Pleasant Home Water District.</p> <hr style="border-top: 1px dashed black;"/> <p style="text-align: center;">GARY OBRIST</p> <p>OCCUPATION: G & P Obrist Excavating Inc. OCCUPATIONAL BACKGROUND: Ed Obrist Trucking. EDUCATIONAL BACKGROUND: Centennial High School, completed 12th grade. PRIOR GOVERNMENTAL EXPERIENCE: None.</p> |
| | |

ROCKWOOD WATER DISTRICT

Commissioner, Pos. 5



**ALEXANDRA
RAE
COPE**

OCCUPATION: Teacher, Portland Public Schools

OCCUPATIONAL BACKGROUND: I worked my way through college working as a grocery clerk/truck loader, and order filler for Fred Meyer Inc. I taught for Portland Public Schools for 5 years. In 1987 I was offered a position at the Fred Meyer Warehouse and Plants as the Human Resources Manager. After 3 years I transferred to the store level in grocery management. I have since returned to teach for Portland Public Schools.

EDUCATIONAL BACKGROUND: Post Graduate P.S.U., Portland, OR; B.S. Education U of Oregon, Eugene, OR; James Monroe H.S., Portland, OR.

PRIOR GOVERNMENTAL EXPERIENCE: None.

Just like you, I work hard to earn a living, be successful and enjoy what life has to offer. I don't mind paying taxes or utilities as long as I know my money is being spent efficiently and with conscience. Just like you, my frustrations are seeing our dollars mis-managed. I support that we retain control of our water district, strengthening its management, billing efficiency, customer service and future planning. When elected, I will do my part to be your voice, using common sense and my leadership skills to influence our Rockwood Water District. Thank you for your vote.

HAVE HOPE, VOTE FOR COPE!

(This information furnished by Alexandra Rae Cope)

Commissioner, Pos. 1

RAYMOND BEACH

OCCUPATION: Construction Electrician, Retired.

OCCUPATIONAL BACKGROUND: Worked as a Construction Electrician until Retirement in Dec. 1991.

EDUCATIONAL BACKGROUND: High School Metro Training Apprenticeship, 4 years.

PRIOR GOVERNMENTAL EXPERIENCE: Past Member Rockwood Water Budget Comm; Current Commissioner Rockwood Water Dist.

JIM ELLINGSON

OCCUPATION: Retired.

OCCUPATIONAL BACKGROUND: Orøweat Bakery Employee, Baker. Air Force.

EDUCATIONAL BACKGROUND: Central Valley High School, Spokane, WA; Eastern Washington State College, Cheney, WA; Portland State University.

PRIOR GOVERNMENTAL EXPERIENCE: None.

Commissioner, Pos. 5

JOHN F. VOGL

OCCUPATION: Retired U.S. Navy, Golden Age Properties, Inc., Owner/Broker.

OCCUPATIONAL BACKGROUND: Real Estate Sales, U.S. Navy, 27 years.

EDUCATIONAL BACKGROUND: Mt. Hood Community College, Associate Degree in Business Admin.; Various Service Schools, Guided Missiles; Ordinance; Safety; Central Catholic High School, Graduated 1947.

PRIOR GOVERNMENTAL EXPERIENCE: Commissioner, Rockwood Water District (10 years); Director, Rockwood Water PUD (3 years); Member, Multnomah County Charter Review Committee (1981-1983).

