



Multnomah County

# VOTERS' PAMPHLET

Primary Election  
May 17, 2016

## Dear Multnomah County Voter:

This part of your Voters' Pamphlet is provided by Multnomah County Elections Division. It includes information about candidates and measures from local jurisdictions within the boundaries of Multnomah County. We have inserted the County Voters' Pamphlet to save on mailing and production costs. The State Pamphlet (on either side of the color bar portion) includes federal and state candidates.

Here are a few things you should know:

- You can view your registration status by visiting My Vote at [www.oregonvotes.gov](http://www.oregonvotes.gov). There you can check or update your voter registration or track your ballot.
- If you are registered with the Democratic or Republican or Independent party, you will receive a ballot containing your party's candidates, the non-partisan candidates and the measures.
- If you are registered with the Democratic or Republican party you will also receive a precinct committeeperson ballot for your political party.
- If you are not registered with the Democratic or Republican or Independent party, you will receive a ballot containing the non-partisan candidates and measures.
- Voters may change their party by registering online (with Oregon DMV ID) or completing a new registration card. **Party changes must be completed by April 26<sup>th</sup>: in person by 5 PM, by mail postmarked April 26 or by online registration by 11:59 PM.**
- **Ballots will be mailed on Wednesday, April 27, 2016.**
- If you change your party affiliation near the April 26, 2016, deadline, you may receive two ballots in the mail. Wait for the second ballot with your new party, and vote that one.
- Not all the candidates or measures in this Voters' Pamphlet will be on your ballot. Your residence address determines those districts for which you may vote. Your official ballot will contain the candidates and issues which apply to your residence.
- Voted ballots **MUST** be received at any County Elections Office or official drop site location by **8:00 PM, Tuesday, May 17, 2016** to be counted.
- This Voters' Pamphlet is on our website: [www.mcelections.org](http://www.mcelections.org). Starting at 8:00 PM on election night, preliminary election results will be posted on our website and updated throughout the evening.

If you have any questions you can contact our office at: 503-988-3720.

Sincerely,

Tim Scott

Multnomah County Director of Elections

**PLEASE NOTE: Multnomah County Elections prints information as submitted. We do not correct spelling, punctuation, grammar, syntax, errors or inaccurate information.**



This pamphlet produced by Multnomah County Elections  
1040 SE Morrison St. Portland OR, 97214 | 503-988-3720  
[www.mcelections.org](http://www.mcelections.org)



# Reading the voters' pamphlet



This Voters' Pamphlet includes information about candidates and measures from local jurisdictions within the boundaries of Multnomah County.

You'll find statements provided by candidates running for office. Not all candidates submitted a statement. You'll also find ballot measures and measure arguments. Keep in mind that Multnomah County Elections does not write or edit these statements. Multnomah County Elections does not fact check or correct punctuation, grammar, syntax errors or inaccurate information.

## Table of contents

### General Information

Letter to voter.....	M- 1
Reading the voters' pamphlet and table of contents.....	M- 2
Voting is as easy as 1 – 2 – 3.....	M- 3
Returning your ballot.....	M- 4



### Candidates

#### Multnomah County

Commissioner, District #1.....	M- 5
Commissioner, District #3.....	M- 8
Commissioner, District #4.....	M- 9

#### City of Portland

Mayor.....	M-10
Commissioner, Position 1.....	M-13
Commissioner, Position 4.....	M-16

#### Metro

Councilor, 5 <sup>th</sup> District.....	M-20
Councilor, 6 <sup>th</sup> District .....	M-21

### Measures

#### Multnomah County

Measure 26-174.....	M-22
Arguments in Favor.....	M-23

#### City of Portland

Measure 26-173.....	M-26
Arguments in Favor.....	M-27
Arguments in Opposition.....	M-30

#### City of Troutdale

Measure 26-172.....	M-32
---------------------	------

#### Mt Hood Community College

Measure 26-170.....	M-33
Arguments in Favor.....	M-34

#### Centennial School District

Measure 26-175.....	M-37
Arguments in Favor.....	M-48

#### Corbett School District

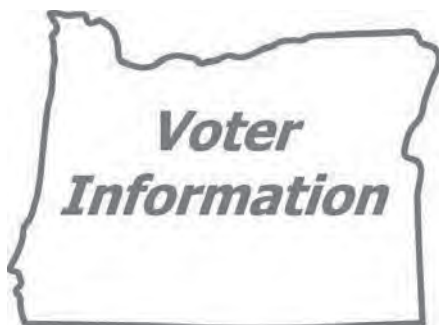
Measure 26-171.....	M-41
Arguments in Favor.....	M-42

#### Scappoose Fire District

Measure 5-254.....	M-45
--------------------	------

### Voter Information

Metro & Multnomah Co. Map.....	M-46
Index of Candidates.....	M-47



# Voting is as Easy as 1 – 2 – 3

## Instructions for completing your ballot.

- 1. Examine your official ballot and vote it.**  
Examine your Official Ballot. Locate the candidate or measure response (YES or NO) of your choice for each contest. To vote, you must completely darken the oval to the left of the response of your choice with black or blue ink.

To vote for a write-in candidate, one whose name does not appear on the Official Ballot, completely darken the oval to the left of the solid line provided for the office and write the full name of the candidate on that line.

**Remember:** If you vote for more than the number of candidates allowed for an office, or you vote both YES and NO on a measure, it is called an **OVERVOTE**, and your vote for that position or measure will **NOT** be counted.

- 2. Review your ballot and prepare to return it.**  
Ensure you have correctly marked your choice for each contest. Your official ballot will contain contests printed on both front and back.

If you make an error on your ballot, damage it in any way or lose it, contact the Multnomah County Elections Division at 503-988-3720 to request assistance.

**Prepare to return your voted ballot.** Place the ballot in the return envelope. You may use the optional secrecy envelope, but it is not required. Election staff will ensure the secrecy of your ballot.

**Remember: Read the Voter's Statement on the return envelope and sign it on the signature line.** Your ballot will not be counted if the return envelope is not signed. Every signature is checked against the registration signature on file and the signature must match for the ballot to be counted.

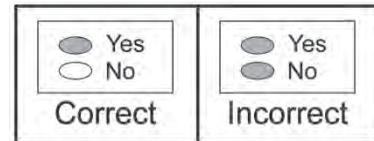
- 3. Return your ballot.**

- **By mail:** Attach first-class postage to the signed and sealed return identification envelope. Mail it as soon as possible to arrive at the Multnomah County Elections Division no later than 8:00 p.m. on Election Day. A postmark does not count!
- **In person at an official drop site:** Deliver the signed and sealed return identification envelope to any official drop site no later than 8:00 p.m. on Election Day. Postage is **NOT** required if delivered to an official ballot drop box location.

## Check your ballot!

Make sure you have completely filled in the oval next to your choices.

If you vote for more candidates than allowed or if you vote **both Yes and No** on a measure, it is called an **overvote**. Your vote **will not count** for that candidate or measure.



If you make a mistake or change your mind while marking your ballot, you may request a replacement ballot from the Elections office or you may make your changes on the ballot. It is critical that **you make your choice obvious** because election workers will inspect each ballot to make sure voter intent is understood and the ballot is counted correctly.

Two examples of how to make your intent clear are below.



You don't have to vote in **all** contests. Your other votes **will still count**. You cannot change your vote once you've mailed or dropped off your ballot.

Contact Multnomah County Elections Division to request assistance if:

- you make a mistake
- your ballot is damaged
- your ballot is lost

or for any other reason.

### Contact:

Multnomah County Elections Division  
503-988-3720

[www.mcelections.org](http://www.mcelections.org)

[elections@multco.us](mailto:elections@multco.us)

Oregon Relay Service: 1-800-735-2900

# Return your ballot

Voting begins as soon as you receive your ballot in the mail. Consider returning it early to be counted in election night results and to have time to resolve any issues.



**Through the Mail** - You can vote and return your ballot through the U.S. Postal Service as soon as you receive it. One first class stamp is all you need to mail the ballot back in Multnomah County. Your ballot must be received by 8:00 p.m. Election Day.



**Official Ballot Drop Boxes** - You can return your ballot to an Official Drop Box by 8:00 p.m. Election Day. Locations in Multnomah County are listed below. Ballots may be delivered to any Official Ballot Drop Box in Oregon until 8:00 p.m. Election Day.

## 24-Hour Official Ballot Drop Boxes

**A-BOY SUPPLY** - 7365 SW Barbur Blvd.  
**GOODWILL STORE** - 3134 North Lombard St.  
**MCDONALD'S RESTAURANT** - West side of NE 40th Ave. between NE Tillamook St. and NE Hancock St. (Near the Hollywood Library.)

**GRESHAM BRANCH LIBRARY** - 385 NW Miller Ave.  
**MIDLAND BRANCH LIBRARY** - 805 SE 122<sup>nd</sup> Ave.  
**PIONEER COURTHOUSE SQUARE** - 700 block of SW Broadway (next to Starbucks and across from Nordstrom)

**REGAL CINEMAS MOVIE THEATER / M & M CAR WASH** – SE Division St & SE 165<sup>th</sup> Ave, Portland – drop box located in Regal Cinemas parking lot behind M & M Car Wash.

**MULTNOMAH COUNTY ELECTIONS OFFICE** - 1040 SE Morrison St. Portland - Two Drop Box locations. Box located on the East Side of **SE 11<sup>th</sup>** Ave. between SE Morrison St. and SE Belmont St. Another box located on the North Side of **SE Belmont** St. between SE 10<sup>th</sup> Ave. and SE 11<sup>th</sup> Ave.

## Library Official Ballot Drop Sites & Hours

Voted ballots may be delivered to any Multnomah County library from the day ballots are mailed until 8:00 PM on Election Day, during library hours. An official ballot drop box is securely located inside each library; library hours are listed below. For 24-hour access, please use the 24-hour drop sites listed above or the ballot/book return at Central Library.

**Central Library** - 801 SW 10th Ave.

- Monday - 10 am - 8 pm
- Tuesday - noon - 8 pm
- Wednesday - noon - 8 pm
- Thursday - 10 am - 6 pm
- Friday - 10 am - 6 pm
- Saturday - 10 am - 6 pm
- Sunday - 10 am - 5 pm

**Belmont Library** - 1038 S.E. César E. Chávez Blvd.

**Gresham Library** - 385 NW Miller Ave., Gresham

**Hillsdale Library** - 1525 SW Sunset Blvd.

**Hollywood Library** - 4040 NE Tillamook St

**Midland Library** - 805 SE 122<sup>nd</sup>

- Monday - 10 am - 6 pm
- Tuesday - 10 am - 8 pm
- Wednesday - noon - 8 pm
- Thursday - noon - 8pm
- Friday - 10 am - 6 pm
- Saturday - 10 am - 6 pm
- Sunday - 10 am - 5 pm

**Albina Library** - 3605 NE 15th Ave.

**Capitol Hill Library** - 10723 SW Capitol Highway

**Fairview-Columbia Library** - 1520 NE Village St., Fairview

**Gregory Heights Library** - 7921 NE Sandy Blvd.

**Holgate Library** - 7905 SE Holgate Blvd.

**Kenton Library** - 8226 N. Denver Ave.

**North Portland Library** - 512 N Killingsworth St.

**Northwest Library** - 2300 NW Thurman St.

**Rockwood Library** - 17917 SE Stark St.

**St. Johns Library** - 7510 N Charleston Ave.

**Sellwood-Moreland Library** - 7860 SE 13th Ave.

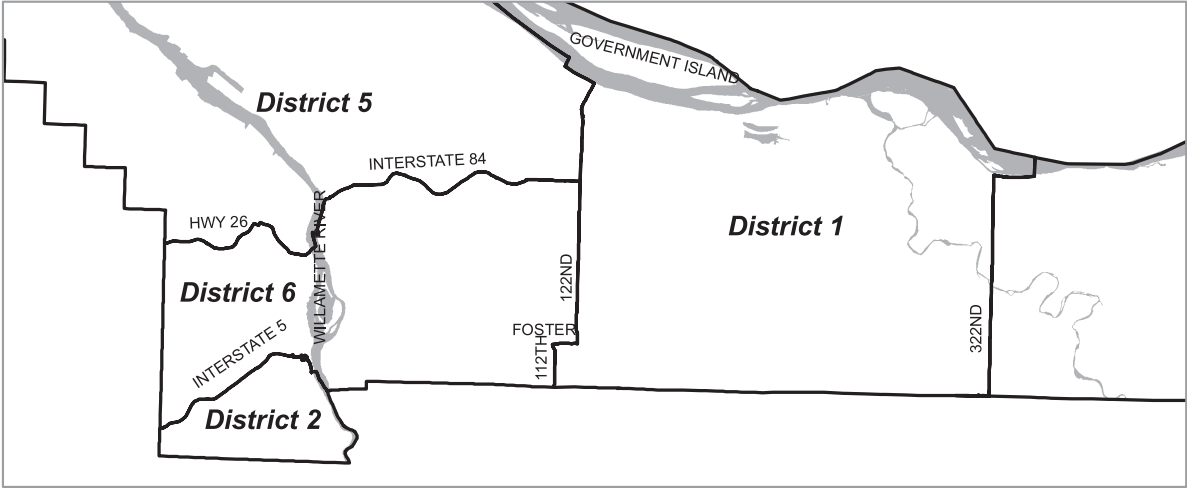
**Troutdale Library** - 2451 SW Cherry Park Rd., Troutdale

**Woodstock Library** - 6008 SE 49th Ave.

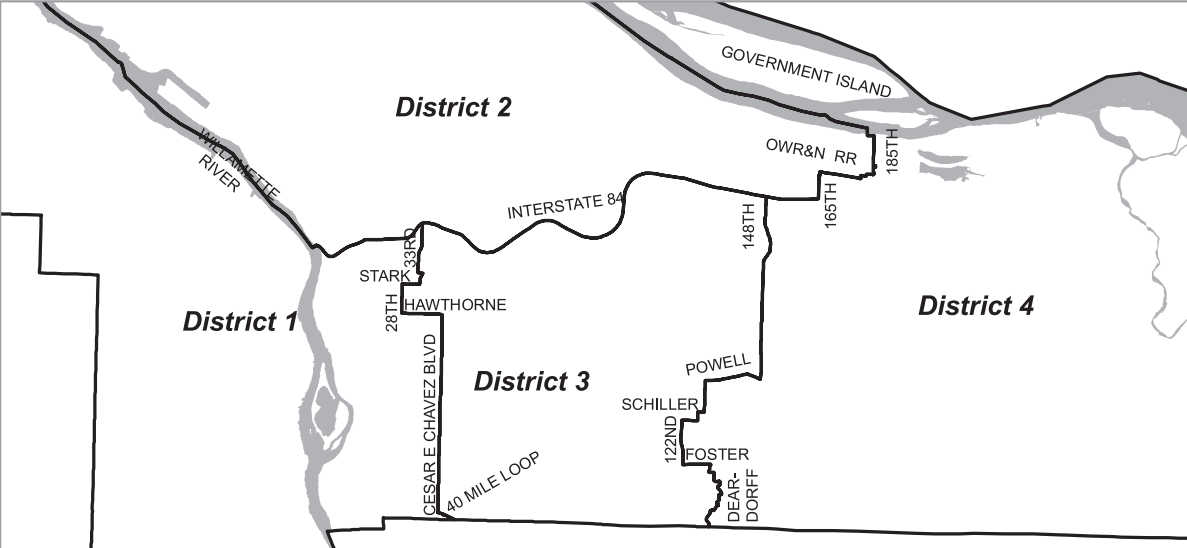
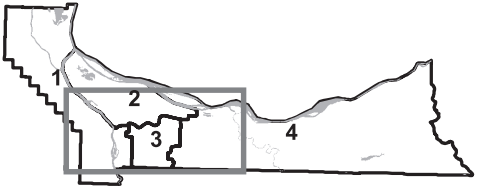
- Monday noon - 8 pm
- Tuesday noon - 8 pm
- Wednesday 10 am - 6 pm
- Thursday 10 am - 6 pm
- Friday 10 am - 6 pm
- Saturday 10 am - 6 pm
- Sunday noon - 5 pm



# METRO COUNCIL DISTRICTS



# MULTNOMAH COUNTY COMMISSIONER DISTRICTS



## Index of Candidates on the ballot

Below is a list of candidates whose names appear on the ballot for Multnomah County, City of Portland and Metro offices. Not all candidates filed an optional Voters' Pamphlet statement.

Multnomah Co Commissioner Dist 1		Vote for 1	4 Year Term
Eric Zimmerman	M-5		
Mel Rader	M-5		
Brian Wilson	M-6		
Marisha Childs	M-6		
Ken Stokes	M-7		
Wes Soderback	M-7		
Sharon Meieran	M-8		
Multnomah Co Commissioner Dist 3		Vote for 1	4 Year Term
Jessica Vega Pederson	M-8		
Multnomah Co Commissioner Dist 4		Vote for 1	4 Year Term
Stanley Dirks	no voters' pamphlet statement filed		
Amanda Schroeder	M-9		
Lori Stegmann	M-9		
City of Portland Mayor		Vote for 1	4 Year Term
Bruce Broussard	M-10		
Patty Burkett	no voters' pamphlet statement filed		
Jules Bailey	M-10		
Ted Wheeler	M-11		
Eric Alexander Calhoun	no voters' pamphlet statement filed		
Bim Ditson	no voters' pamphlet statement filed		
Sean Davis	M-11		
David Schor	M-12		
Jessie Sponberg	no voters' pamphlet statement filed		
Sarah Iannarone	M-12		
David (The Ack) Ackerman	no voters' pamphlet statement filed		
Lew Humble	no voters' pamphlet statement filed		
Deborah Harris	no voters' pamphlet statement filed		
Trevor Manning	no voters' pamphlet statement filed		
Steven J Entwisle Sr	no voters' pamphlet statement filed		
City of Portland Commissioner, Pos 1		Vote for 1	4 Year Term
Lanita Duke	M-13		
Amanda Fritz	M-13		
Ann Sanderson	M-14		
Tabitha Ivan	M-14		
Sara Long	no voters' pamphlet statement filed		
David Morrison	M-15		
City of Portland Commissioner, Pos 4		Vote for 1	4 Year Term
Michael W Durrow	M-16		
Leah Marie Dumas	no voters' pamphlet statement filed		
Steve Novick	M-16		
Suzanne Stahl	M-17		
Fred Stewart	M-17		
Joseph Puckett	M-18		
James Bernard Lee	M-18		
Chloe Eudaly	M-19		
Shannon Estabrook	no voters' pamphlet statement filed		
Stuart Emmons	M-19		
Metro District 5			
Metro Councilor, 5th District		Vote for 1	4 Year Term
Colby Clipston	M-20		
Sam Chase	M-20		
Metro District 6			
Metro Councilor, 6th District		Vote for 1	4 Year Term
Bob Stacey	M-21		