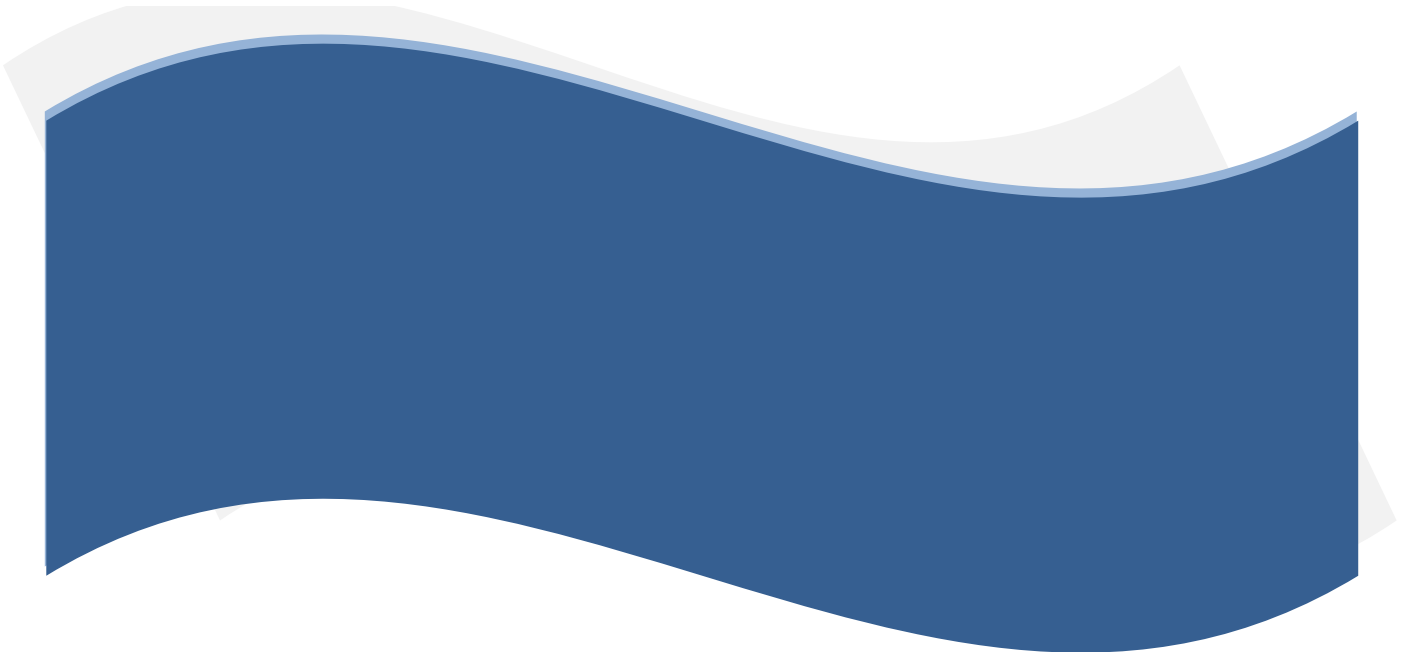




**MULTNOMAH COUNTY
JUSTICE REINVESTMENT
PROGRAM**

HB3194 DATA WORKGROUP

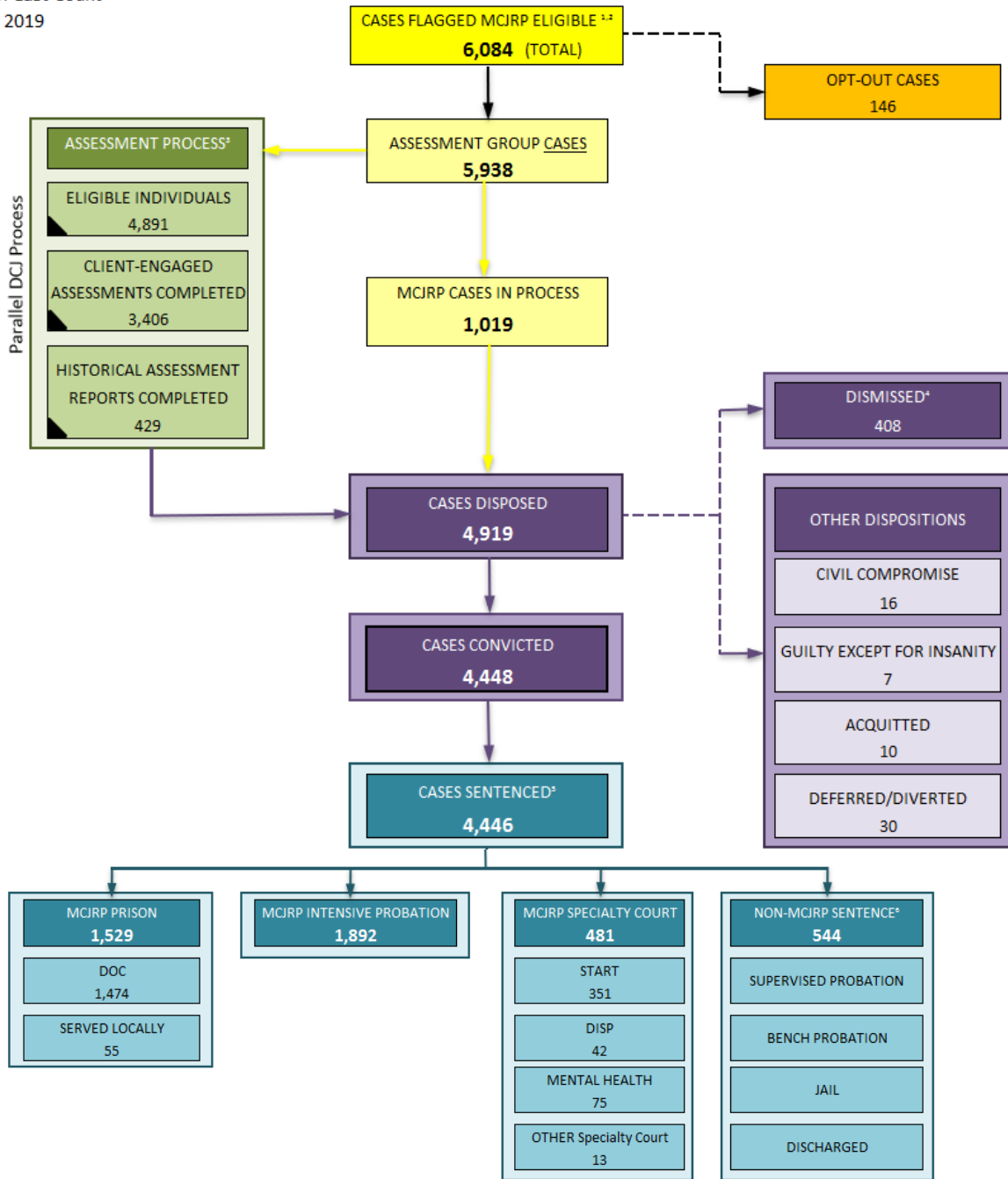
**PROCESS MEASURES FROM
JULY 2014 THROUGH JUNE 30, 2019**





Date of Last Count
July 5, 2019

MCJRP Case Flow



1. The majority of MCJRP Eligible cases commence following an arrest (80%); other MCJRP Eligible cases are initiated at arraignment on indictment warrants (20%).

2. MCJRP cases in process includes cases involved in pre-adjudication hearings as well as 383 cases with Active Warrants (Either for FTAs or on Warrants on Indictments).

3. One assessment per individual; individuals may have multiple MCJRP cases. Does not include individuals whose cases were dismissed post-arraignment.

▲ This symbol denotes numbers that represent people, not cases.

4. Includes all cases dismissed post-arraignment. The majority of cases in the "Dismissed" category are the result of cases that were dismissed as part of a plea agreement in the global resolution of multiple cases. Other dismissed cases were initially diverted and later dismissed, were cases with juvenile defendants that were dismissed in favor of a juvenile case resolution, or were cases that were dismissed without prejudice and will likely be reinstated in the future. All subsequent numbers in this report include only those cases that have been convicted and sentenced.

5. Sentenced cases are grouped into categories according to the judicial order at initial sentence when the case is convicted. These numbers represent **outcomes for the 1st sentence only**.

6. Future reports will include further distribution breakdowns for these Non-MCJRP sentence categories.

SOURCES: Multnomah County Department of Community Justice, District Attorney's Office, and the Multnomah Circuit Court of the Oregon Judicial Department.



Date of Last Count:
July 5, 2019

MCJRP Program Population Demographics

	Cases		* People *		Cases	
	Assessment Group #	%	Assessment Group #	%	Opted Out #	%
N = 5,046 Defendants ¹						
2013 AC Survey ²						
GENDER						
Female	1,158	19.50%	1,008	20.42%	26	17.81%
Male	4,780	80.50%	3,928	79.58%	120	82.19%
RACE						
Black/African American	1,384	23.31%	1,119	22.67%	42	28.77%
Asian	182	3.07%	142	2.88%	3	2.05%
Native American	92	1.55%	74	1.50%	1	0.68%
White	3,508	59.08%	2,925	59.26%	91	62.33%
Other		0.00%		0.00%		0.00%
HISPANIC ETHNICITY						
Hispanic/Latino	772	13.00%	676	13.70%	9	6.16%
Not Hispanic	5,166	87.00%	4,260	86.30%	137	93.84%
AGE ³						
Younger than 18 yoa	89	1.50%	86	1.74%	1	0.68%
18 - 24 yoa	970	16.34%	821	16.63%	26	17.81%
25 - 34 yoa	2,207	37.17%	1,802	36.51%	49	33.56%
35 - 44 yoa	1,506	25.36%	1,240	25.12%	40	27.40%
45 - 54 yoa	828	13.94%	710	14.38%	20	13.70%
55 - 64 yoa	299	5.04%	243	4.92%	7	4.79%
Over 65 yoa	39	0.66%	34	0.69%	3	2.05%
TOTAL	5,938	97.6%	4,936	97.1%	146	2.4%
						100.0%

Person/Case Connection	Number of People	Number of Cases	Cumulative Total of Cases
Number of People with 1 case	4,144	1	4,144
Number of People with 2 or more cases	792	2	5,412
	118	3	5,766
	31	4	5,890
	6	5	5,920
	3	6	5,938

1. Some defendants may have multiple cases. The 5,046 defendants includes those who opted out of MCJRP. There are 4,936 unique individuals in the Assessment Group and 110 unique Opt-Outs.
 2. Multnomah County Demographics (2013 American Community Survey 1-Year Estimates)
 3. Age At MCJRP Eligibility. Coincides with DA case issuance and Court case filed date.

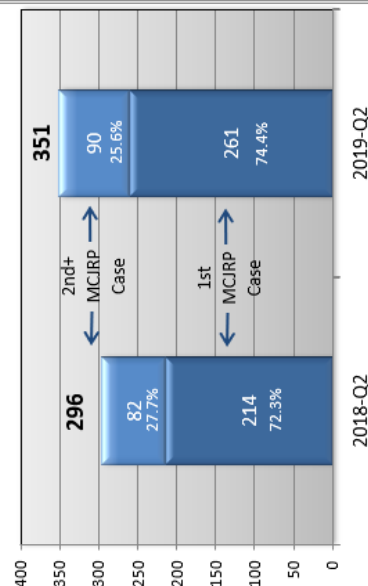
SOURCE: Multnomah Circuit Court of the Oregon Judicial Department.

MCJRP Case Summary

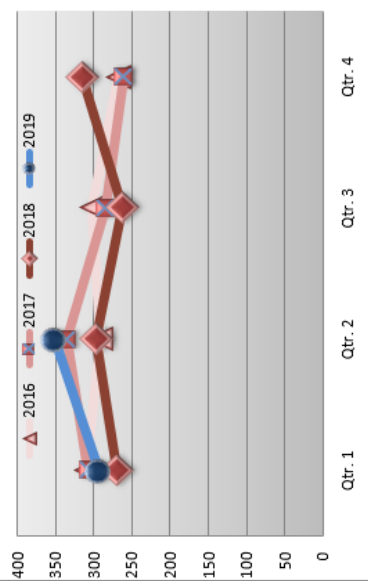
as of July 5, 2019

Total MCJRP Eligible Cases	Gender Ratio 80.5% Male 19.5% Female	% People of Color 23.3% Black/African Amer. 13.0% Hispanic/Latino	Largest Age Groups 25-34 (37.2%) 35-44 (25.4%)	Cases Convicted	4,446	Intensive Supervision	1,892	MCJRP Revocations ¹	488 (25.8%)
----------------------------	--	---	--	-----------------	-------	-----------------------	-------	--------------------------------	-------------

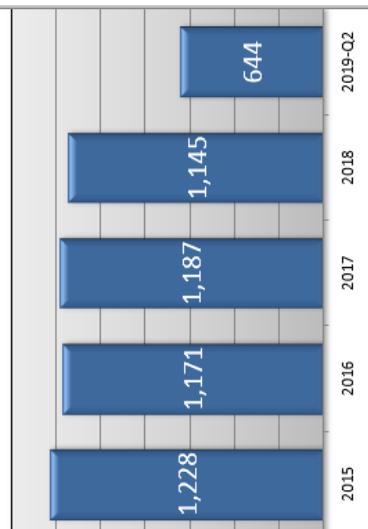
Eligible Cases - Current Qtr TOTAL (compared to same qtr last year)



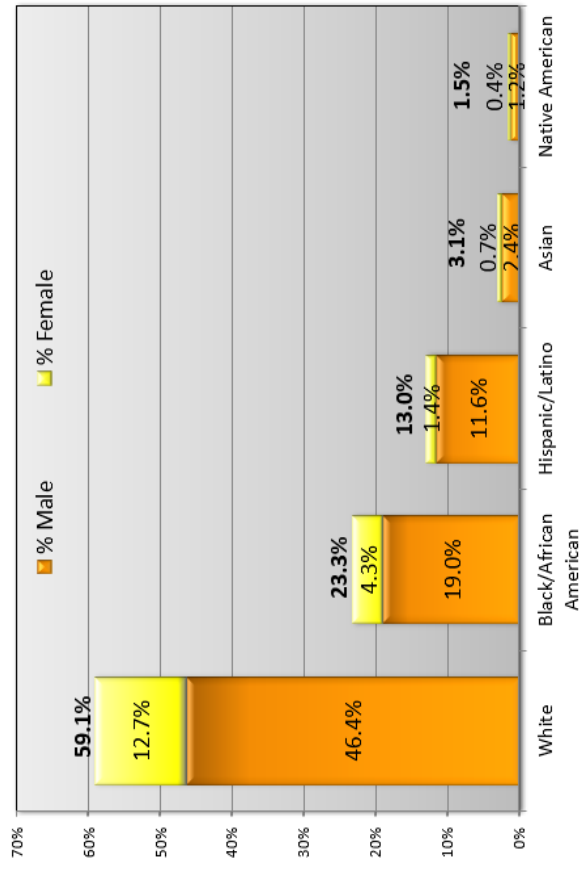
Eligible Cases - Year to Date TOTAL (Qtrs. 1-4) (compared to prior years)



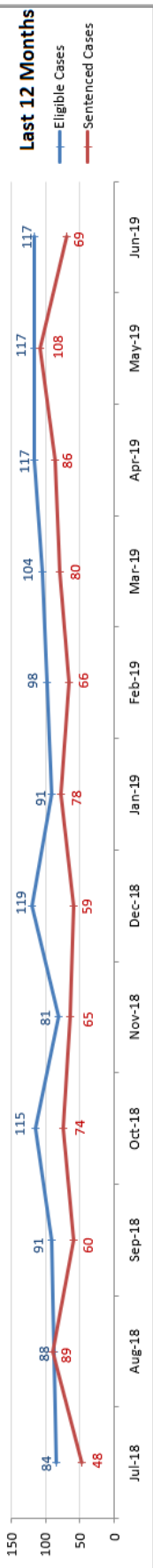
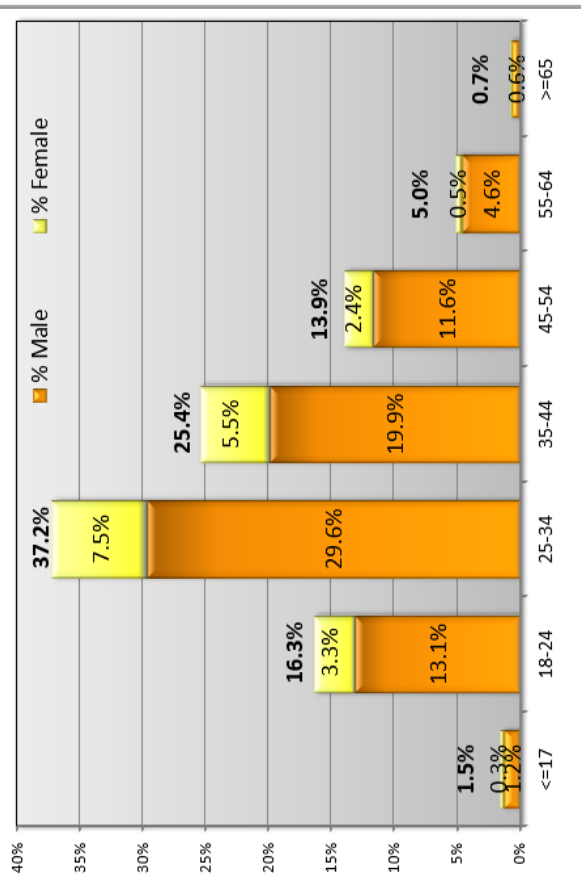
Eligible Cases Annual TOTAL (compared to prior years)



Race & Ethnicity Distribution by Gender of MCJRP Eligible Cases



Age Category Distribution by Gender of MCJRP Eligible Cases



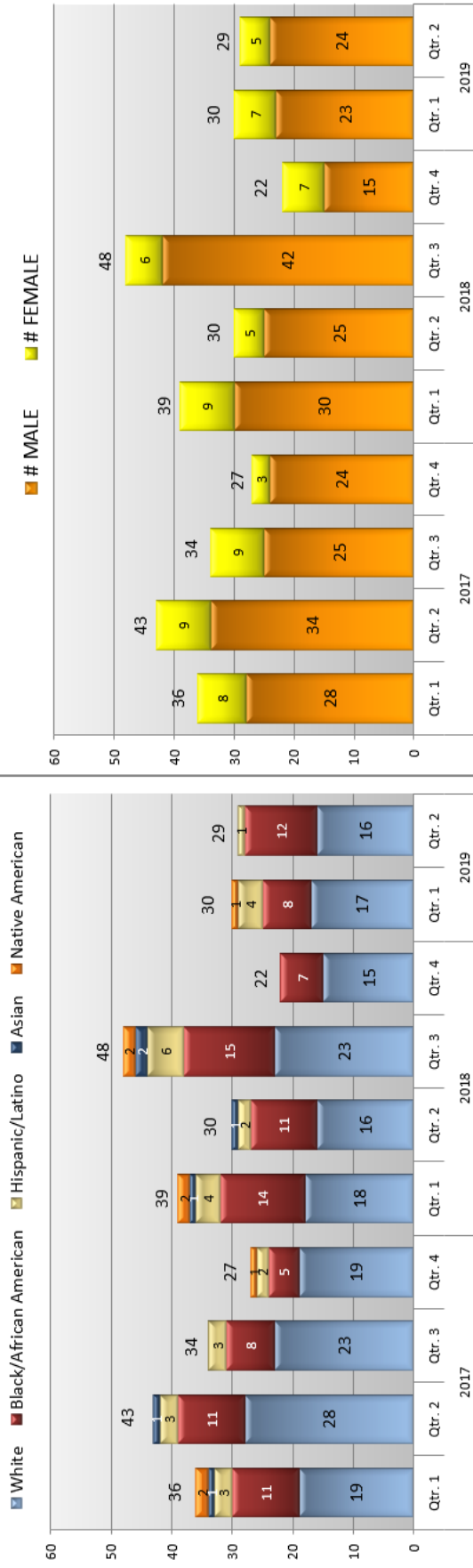
* Year 2014 only contains data from July 1-Dec 31 since the program began in July.
1. Revocations are from MCJRP Intensive Supervision cases only.

MCJRP Case Summary

as of July 5, 2019

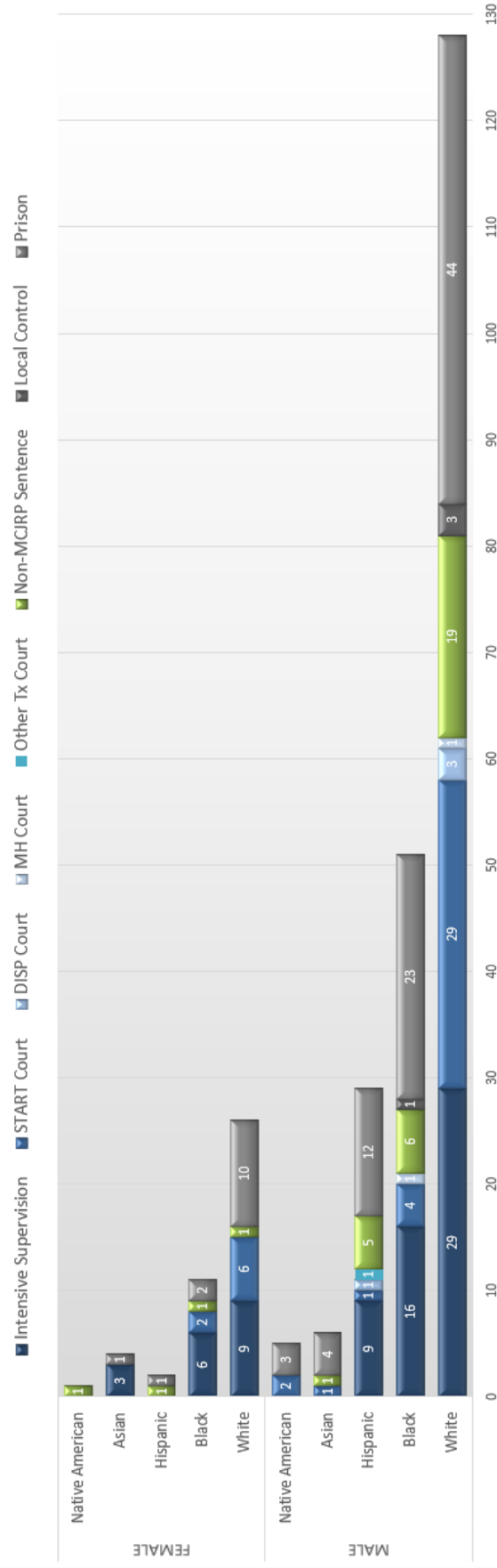
Number of Cases Revoked from MCJRP Intensive Supervision Probation in that Quarter (2nd Sentences)

Revoked Cases by Gender (n=488)



Sentencing Outcomes by Gender and Race & Ethnicity for the Latest Quarter

Case Outcomes by Gender and Race & Ethnicity (n=263)



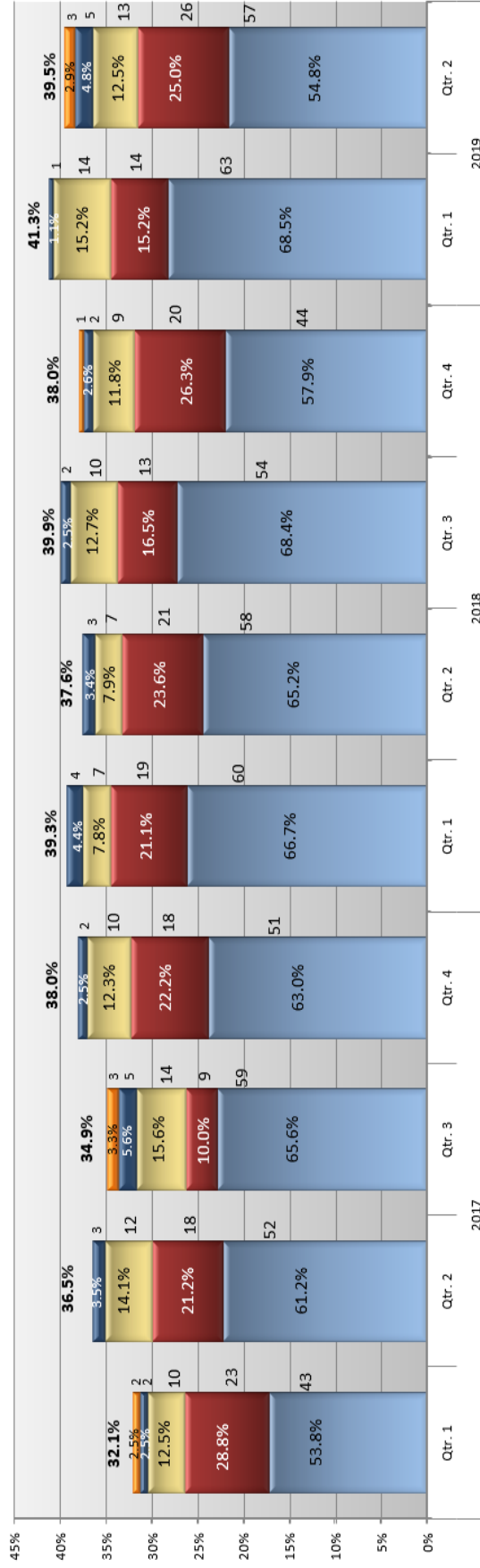
MCJRP Case Summary

as of July 5, 2019

Percent of Cases with a Prison Sentence of MCJRP Cases Sentenced in that Quarter (1st or Initial Sentence only)

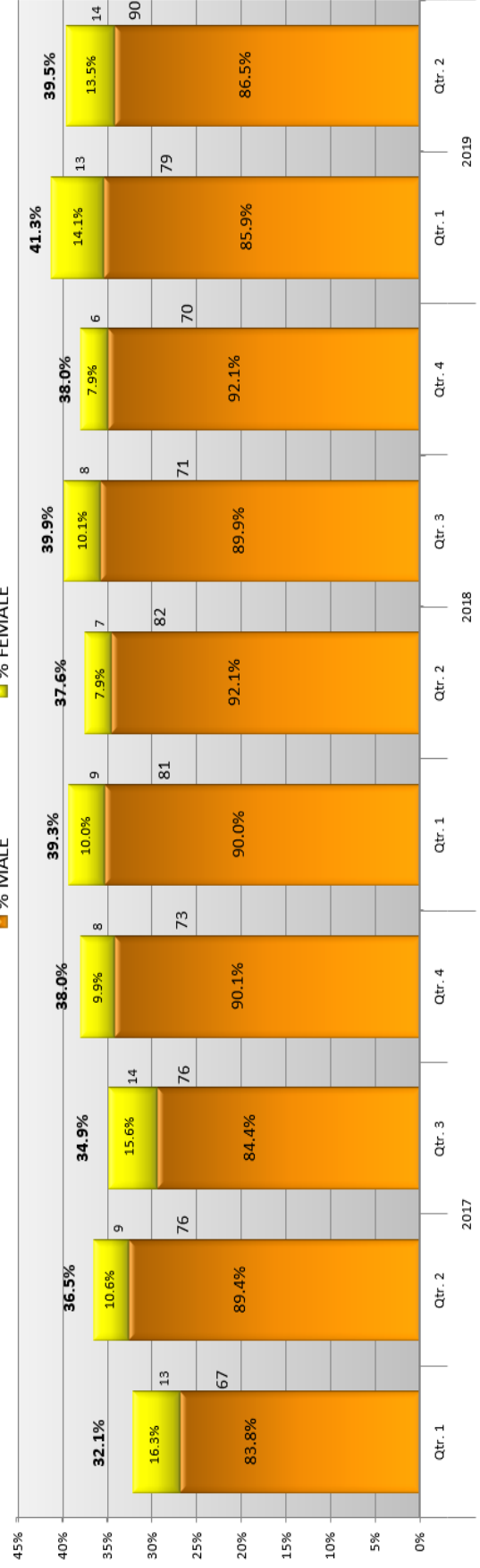
Percent of Cases Sentenced to Prison by Race & Ethnicity (n=866)

White Black/African American Hispanic/Latino Asian Native American



Percent of Cases Sentenced to Prison by Gender (n=866)

% MALE % FEMALE

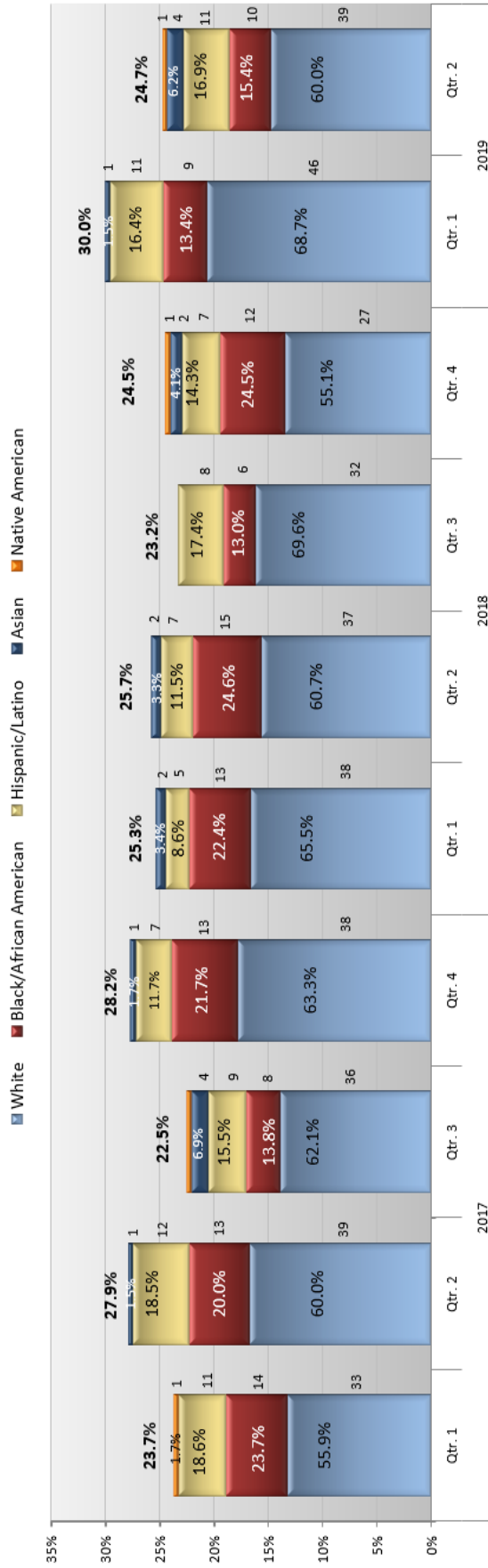


MCJRP Case Summary

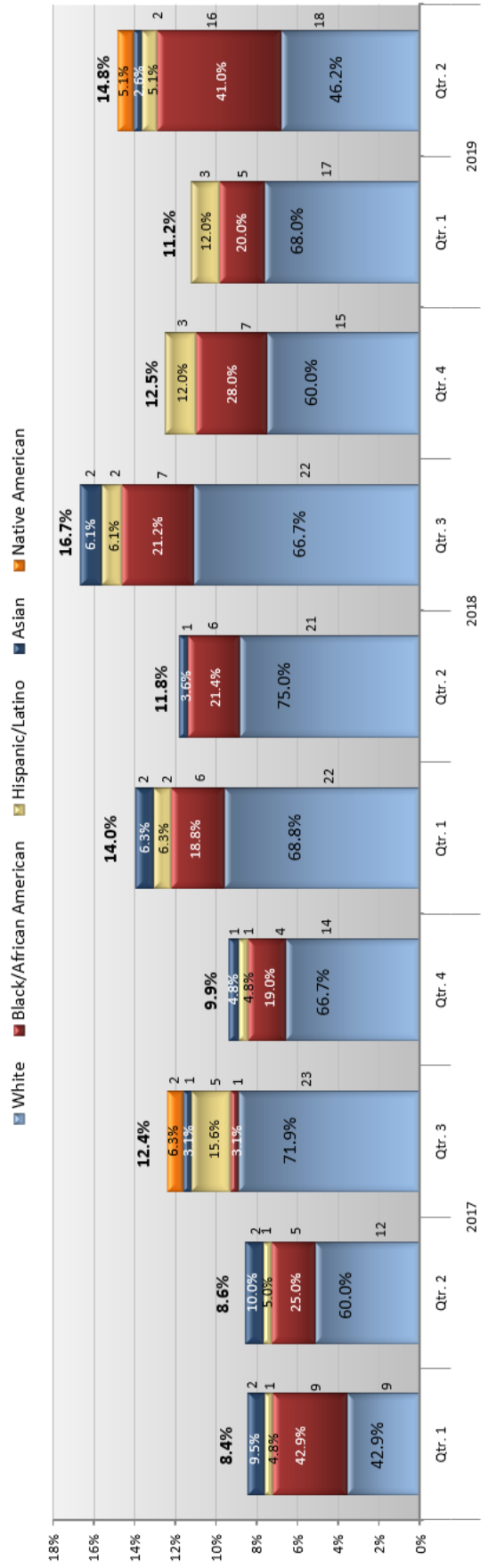
as of July 5, 2019

Percent of Cases with a Prison Sentence of MCJRP Cases Sentenced - By First or Subsequent MCJRP Case (The graphs on this page break out the sentencing graph at the top of the previous page.)

Percent of Cases Sentenced to Prison in that Quarter on the 1st MCJRP Case (by Race & Ethnicity) n=864



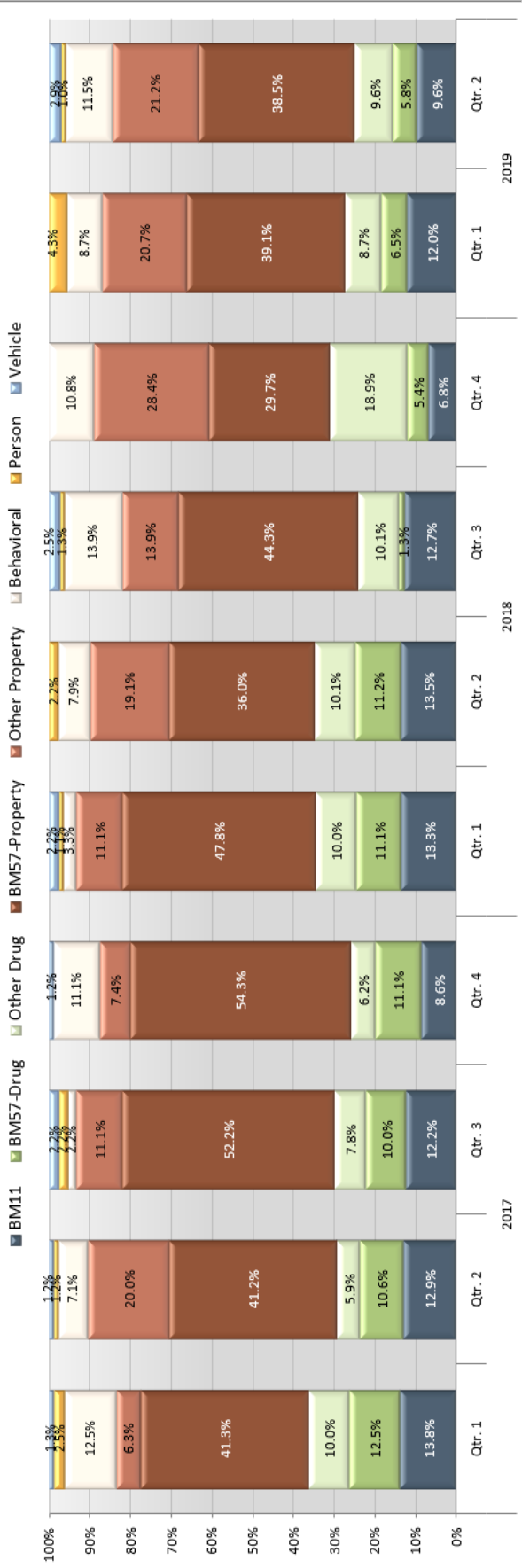
Percent of Cases Sentenced to Prison in that Quarter on the 2nd+ MCJRP Case (by Race & Ethnicity) n=347



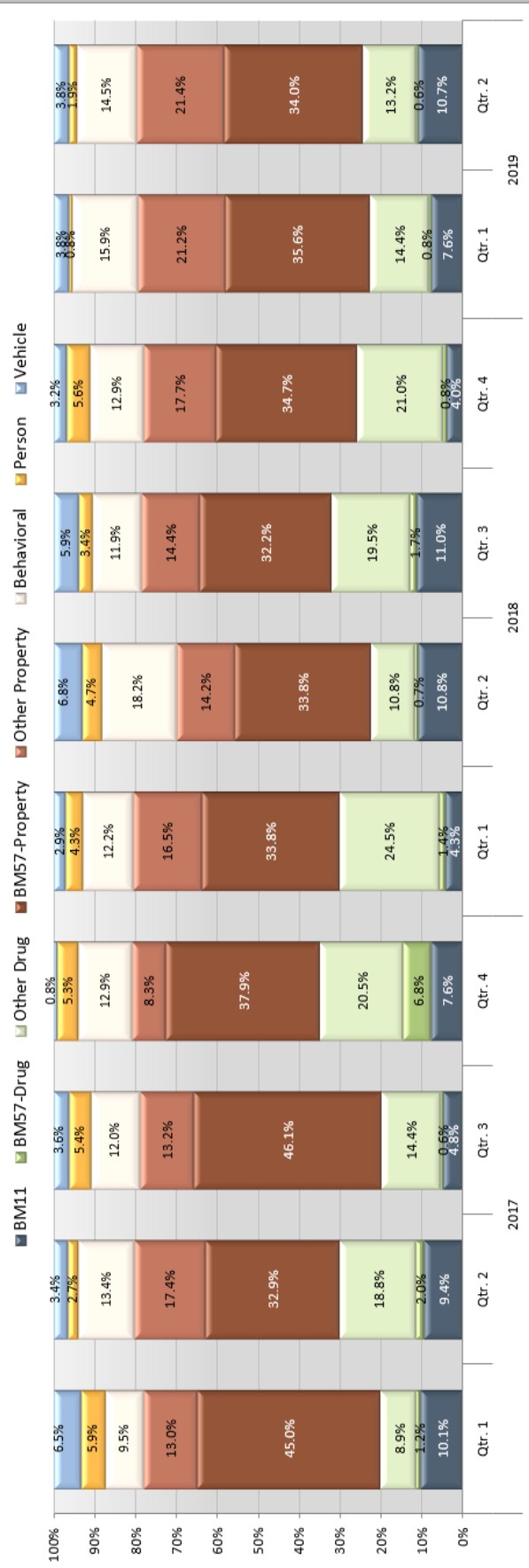
M CJRP Case Summary

as of July 5, 2019

Distribution of Cases by DA Crime Type Categories Sentenced to Prison in that Quarter (1st or Initial Sentence only)
Percent of Cases Sentenced to Prison by DA Crime Type Category (n=1,015)



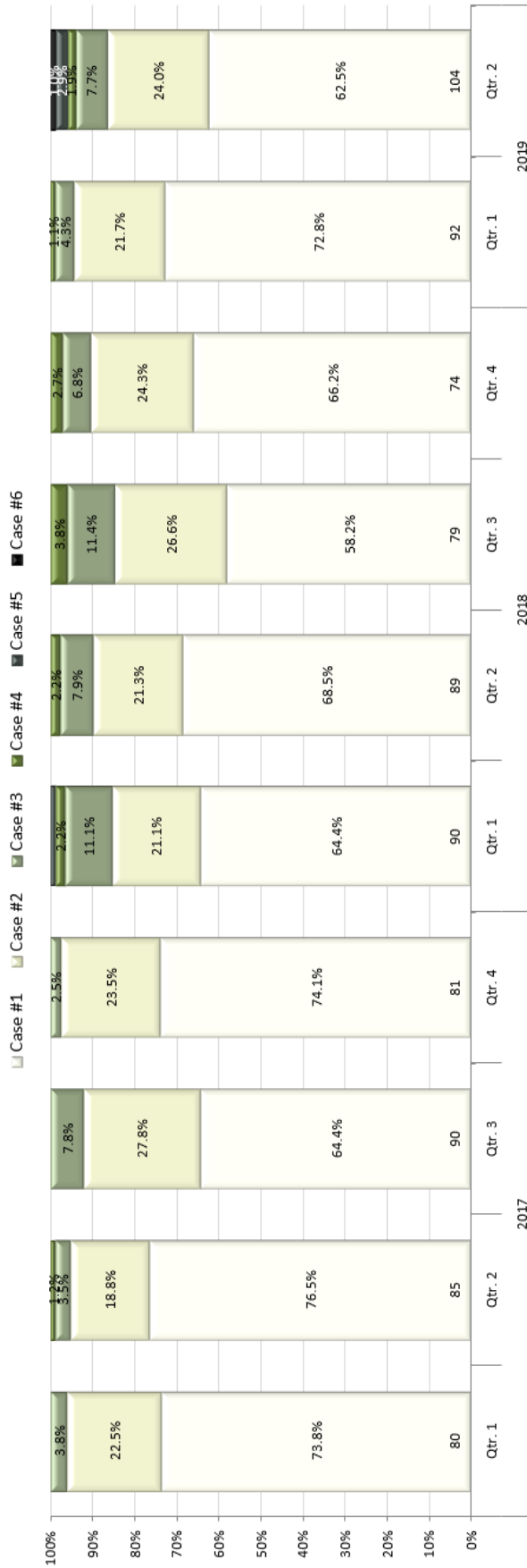
Distribution of Cases by DA Crime Type Categories Sentenced to Community Supervision in that Quarter (1st or Initial Sentence only)
Percent of Cases Sentenced to Community Supervision by DA Crime Type Category (n=1,437)



MCJRP Case Summary

as of July 5, 2019

Distribution of Cases based on numerical order of Filed Date and Sentenced to Prison in that Quarter (1st or Initial Sentence only)
 Percent of Cases Sentenced to Prison by # of Case in MCJRP (n=864)



Distribution of Cases based on numerical order of Filed Date and Sentenced to Community Supervision in that Quarter (1st or Initial Sentence only)
 Percent of Cases Sentenced to Community Supervision by # of Case in MCJRP (n=1,437)

