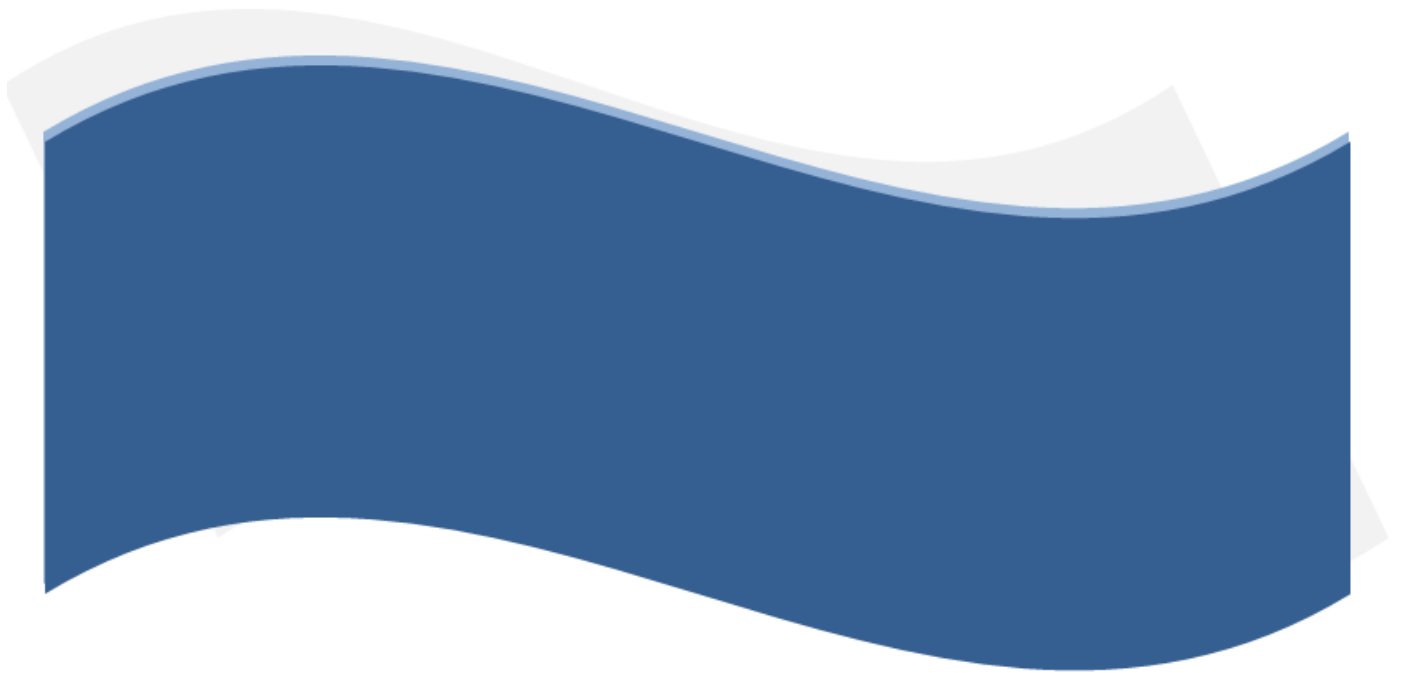




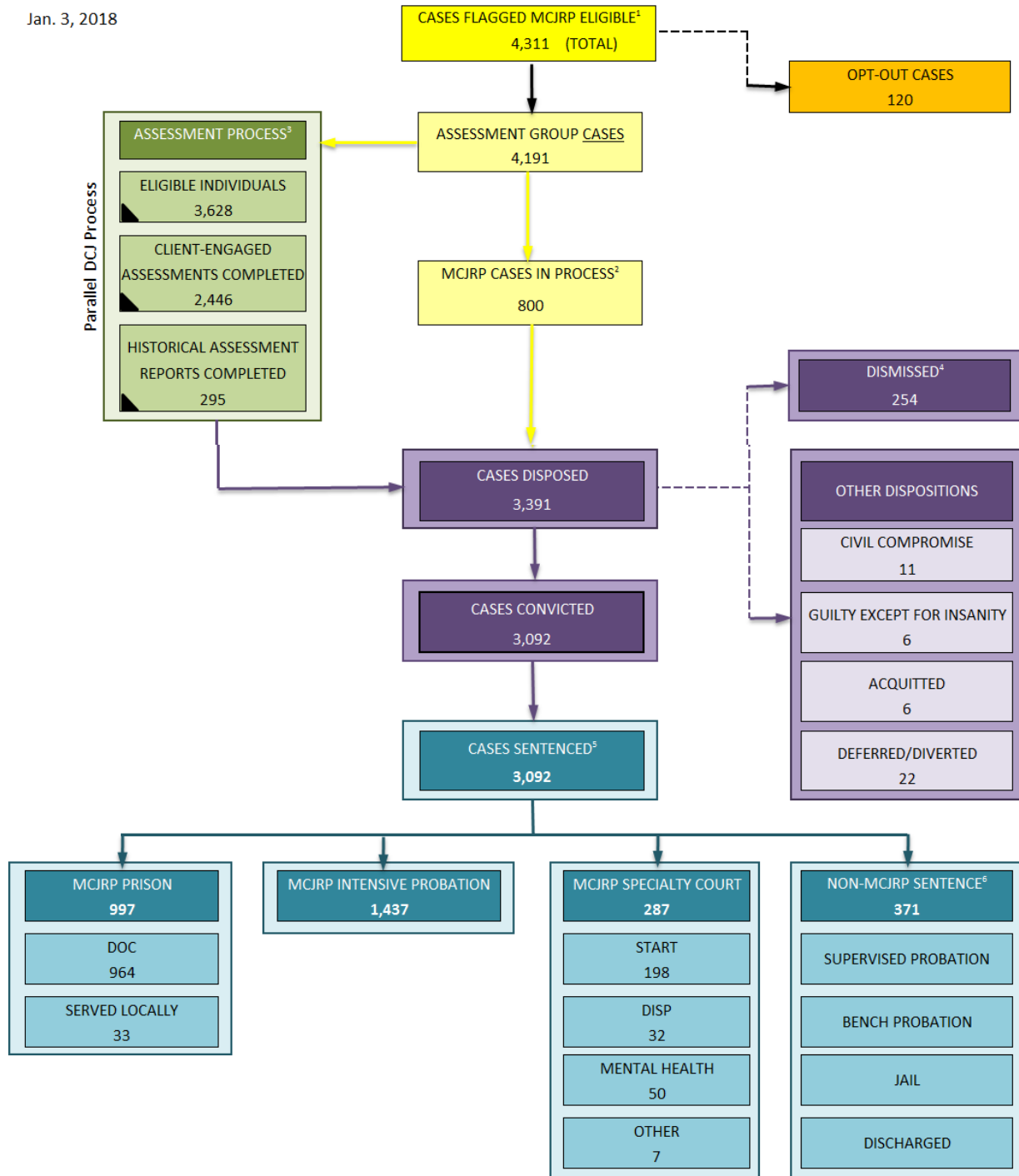
**MULTNOMAH COUNTY
JUSTICE REINVESTMENT
PROGRAM**

HB3194 DATA WORKGROUP

**PROCESS MEASURES FROM
JULY 2014 THROUGH DECEMBER 31, 2017**



MCJRP Case Flow



1. The majority of MCJRP Eligible cases begin with an arrest (80%); other MCJRP Eligible cases start with an Indictment (20%).
 2. MCJRP Cases in Process include 270 cases with Active Warrants (Either for FTAs or on Indictments)
 3. One assessment per individual; individuals may have multiple MCJRP cases. Does not include individuals whose cases were dismissed post-arraignment.
 ▲ This symbol denotes numbers that represent people, not cases.
 4. Includes all cases dismissed post-arraignment. All subsequent numbers in this report include only those cases that were convicted.
 5. Category only includes initial sentence at the case level for the judgment on conviction for that case.
 6. Future reports will include further distribution breakdowns for these categories.



Date of Last Count:
January 3, 2018

Population Demographics

N = 3,642 Defendants*	Cases Assessment Group		* People * Assessment Group		Cases Opted Out		2013 AC Survey **	
	#	%	#	%	#	%	#	%
GENDER								
Female	875	20.88%	772	21.27%	23	19.17%	383,196	50.60%
Male	3,316	79.12%	2,858	78.73%	97	80.83%	374,175	49.40%
RACE								
Black/African American	984	23.48%	841	23.17%	40	33.33%	41,861	5.53%
Asian	114	2.72%	94	2.59%	2	1.67%	52,070	6.88%
Native American	57	1.36%	49	1.35%	1	0.83%	6,482	0.86%
White	2,519	60.10%	2,183	60.14%	70	58.33%	591,097	78.05%
Other		0.00%		0.00%		0.00%	65,861	8.70%
HISPANIC ETHNICITY								
Hispanic/Latino	517	12.34%	463	12.75%	7	5.83%	83,465	11.02%
Not Hispanic	3,674	87.66%	3,167	87.25%	113	94.17%	673,906	88.98%
AGE ***								
Younger than 18 yoa	61	1.46%	61	1.68%	1	0.83%	152,034	20.07%
18 - 24 yoa	704	16.80%	619	17.05%	21	17.50%	68,429	9.04%
25 - 34 yoa	1,511	36.05%	1,302	35.87%	43	35.83%	140,427	18.54%
35 - 44 yoa	1,070	25.53%	908	25.01%	31	25.83%	119,246	15.74%
45 - 54 yoa	624	14.89%	548	15.10%	16	13.33%	99,689	13.16%
55 - 64 yoa	196	4.68%	171	4.71%	5	4.17%	92,681	12.24%
Over 65 yoa	25	0.60%	21	0.58%	3	2.50%	84,865	11.21%
TOTAL	4,191	97.2%	3,630	96.8%	120	2.8%	757,371	100.0%

* Some defendants may have multiple cases. There are 3,630 unique individuals in the Assessment Group and 12 duplicates in the Opted-Out Group.

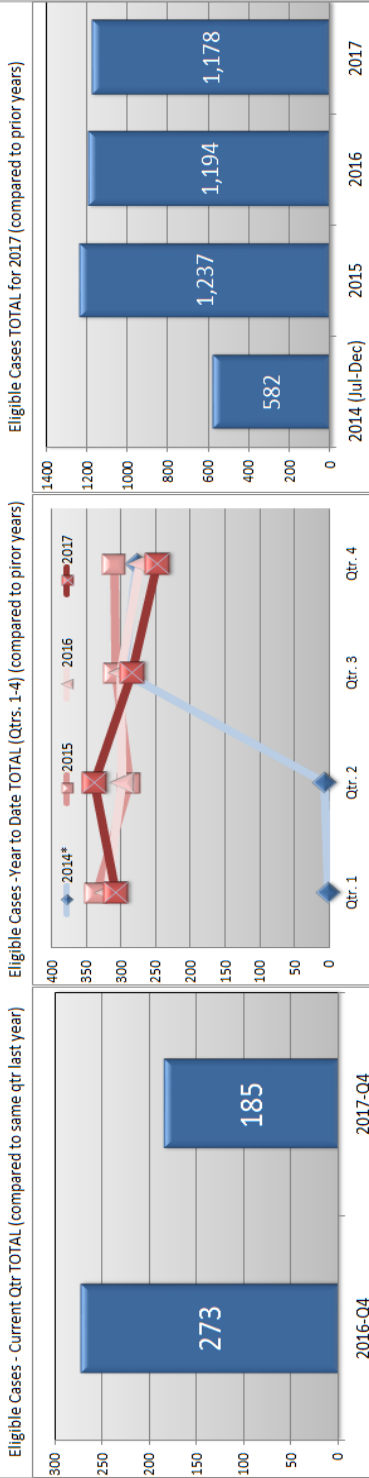
** Multnomah County Demographics (2013 American Community Survey, 1-Year Estimates)

*** At MCJRP Eligibility. Coincides with DA case issuance and Court case filed date.

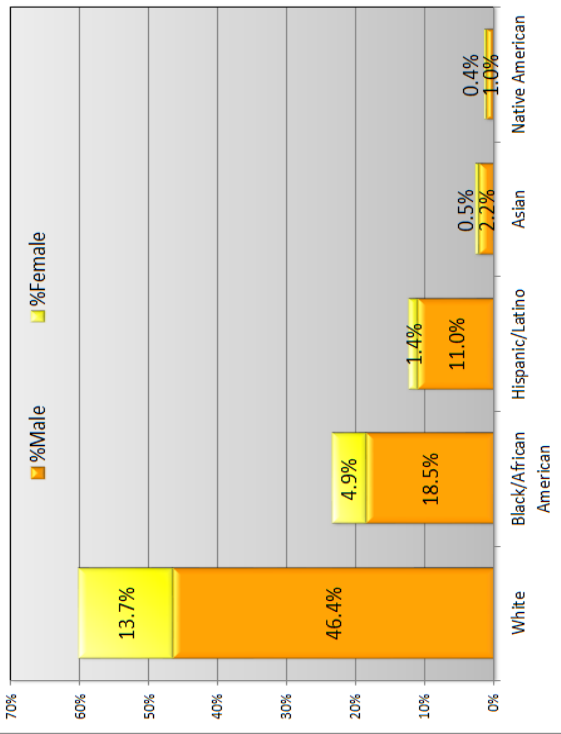
SOURCE: Multnomah Circuit Court of the Oregon Judicial Department.

M CJRP Case Summary

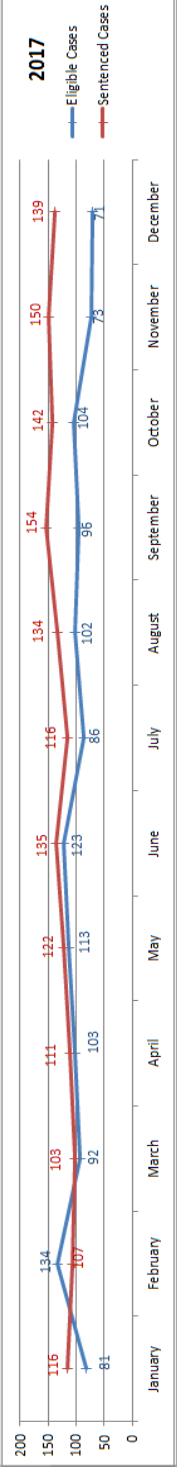
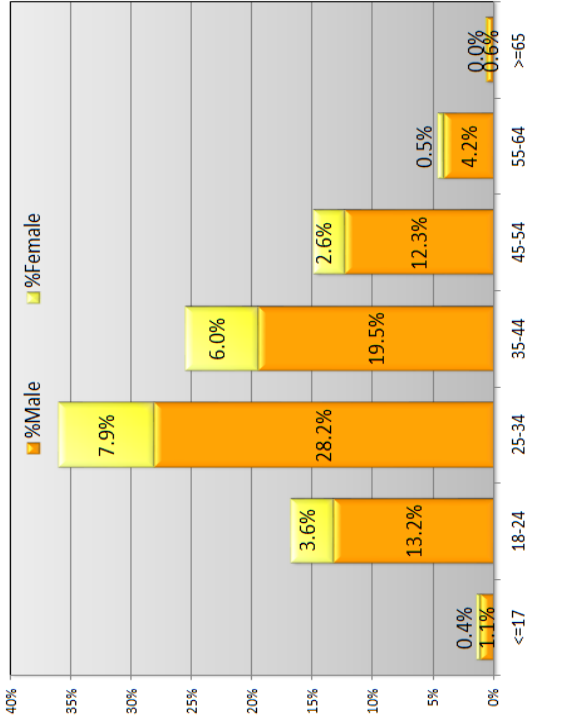
Total MCJRP Eligible Cases 4,311	Gender Ratio 79.1% Male 20.9% Female	% People of Color 23.5% Black/African Amer. 12.3% Hispanic/Latino	Largest Age Groups 25-34 (36.1%) 35-44 (25.5%)	Cases Convicted 3,092	Intensive Supervision 1,437	MCJRP Revocations* 279
--	--	---	--	---------------------------------	---------------------------------------	----------------------------------



Race & Ethnicity Distribution by Gender



Age Category Distribution by Gender



* Year 2014 only contains data from July 1-Dec 31 since the program began in July.
1. Revocations are from MCJRP Intensive Supervision cases only.