

Table of Contents

Introduction 3

Form of County Government..... 3

Population 4

Race and Ethnicity..... 4

Education..... 5

Employment and Industry 6

Employment..... 6

Industry 6

Transportation and Infrastructure..... 7

Roads and Highways 7

Portland International Airport..... 7

TriMet..... 7

Culture and Recreation..... 8

Arts and Entertainment..... 8

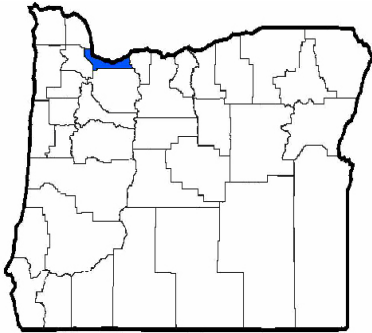
Recreation..... 8

Climate..... 9

Fun Facts..... 9

(this page intentionally left blank)

Introduction



Multnomah County is home to approximately 820,672 residents, making it the most populous county in the State of Oregon. The county is located in Northwestern Oregon where the Columbia and Willamette rivers meet. It is bordered by the State of Washington to the north and is surrounded by Hood River, Clackamas, Washington and Columbia Counties in Oregon. The county seat is Portland, which is also the largest city in the State of Oregon (see page 10 for a detailed map).

Geographically, Multnomah County is the smallest county in Oregon and includes densely populated urban areas as well as rural land. The County covers 465 square miles, most of which lie in the Willamette Valley between the Cascade Mountains to the east and the Coast Range to the west. The elevation ranges from 77 feet above sea level in Portland to 4,751 feet above sea level at Buck Peak in the Cascade foothills.

Form of County Government

Multnomah County is governed according to its Home Rule Charter. Multnomah County’s legislative body, the Board of County Commissioners, is composed of four non-partisan County Commissioners elected from geographical districts and the County Chair, who is elected at-large and serves as both Chief Administrator and Legislator. The County has three other independently elected positions -- the Sheriff, the District Attorney and the Auditor.

There are 42 governmental taxing districts located wholly or partially inside of Multnomah County. Portland (population 656,298) and Gresham (population 114,361) are the two largest cities in Multnomah County. Other major governmental entities located within Multnomah County include Metro, Portland Public Schools, the Port of Portland, TriMet, and Portland Community College. Overlapping districts share a tax base, infrastructure and services with Multnomah County.

Sources: Portland State University College of Urban and Public Affairs Population Research Center; Tax Supervising & Conservation Commission



Population

Multnomah County's current population is estimated at 820,672 residents, a 12.4% increase since 2010, slightly higher than the 11.4% increase for the state of Oregon as a whole. Multnomah County has a population density of 1,765 people per square mile.

Race and Ethnicity

The US Census estimates that in 2020 Multnomah County's population was 76.1% White, 7.8% Asian, 5.5% Black or African-American, 0.7% Native Hawaiian or other Pacific Islander, 0.9% American Indian or Alaskan Native, 2.6% Other Races, and 6.6% people with two or more races. Approximately 11.8% of the County's population is Hispanic.

Multnomah County is also home to diverse languages and nationalities. Almost 14% of residents were born in another country, compared with 9.8% for Oregon as a whole. Almost twenty percent of County residents over the age of 5 speak a language other than English at home. Of those speaking a language other than English at home, 40.5% speak Spanish.

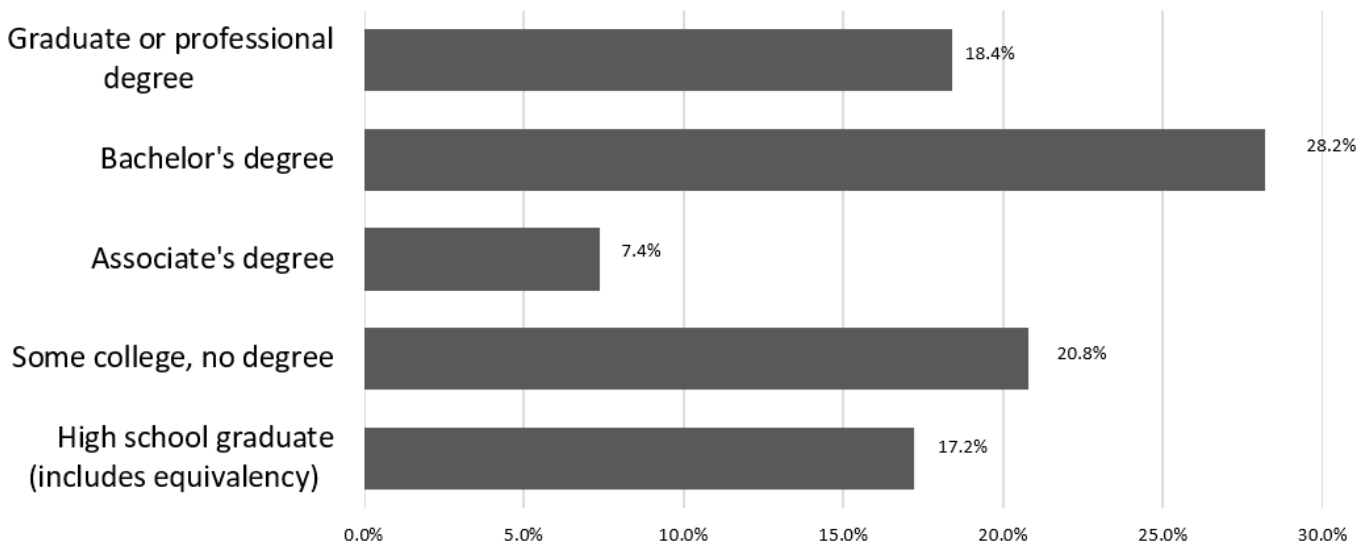
Education

An estimated 87.8% of Multnomah County’s school aged population were enrolled in public schools in 2019. Public school districts in Multnomah County include Portland Public Schools, Parkrose, Reynolds, Gresham-Barlow, Centennial, Corbett, David Douglas, and Riverdale.

There are a number of post-secondary schools in Multnomah County. Portland State University has a total enrollment of 23,177 for the Fall 2021 school year. Multnomah County is also home to Oregon Health Sciences University, which educates health professionals and is a leader in biomedical research. Other colleges include Lewis & Clark College, the University of Portland, and Reed College. Portland Community College and Mount Hood Community College both educate the community and are partially supported by local property taxes.

Multnomah County residents have above average educational achievement for the state of Oregon. In 2020, 46.5% of county residents 25 years or older had achieved a bachelor’s degree or higher compared to 34.4% statewide.

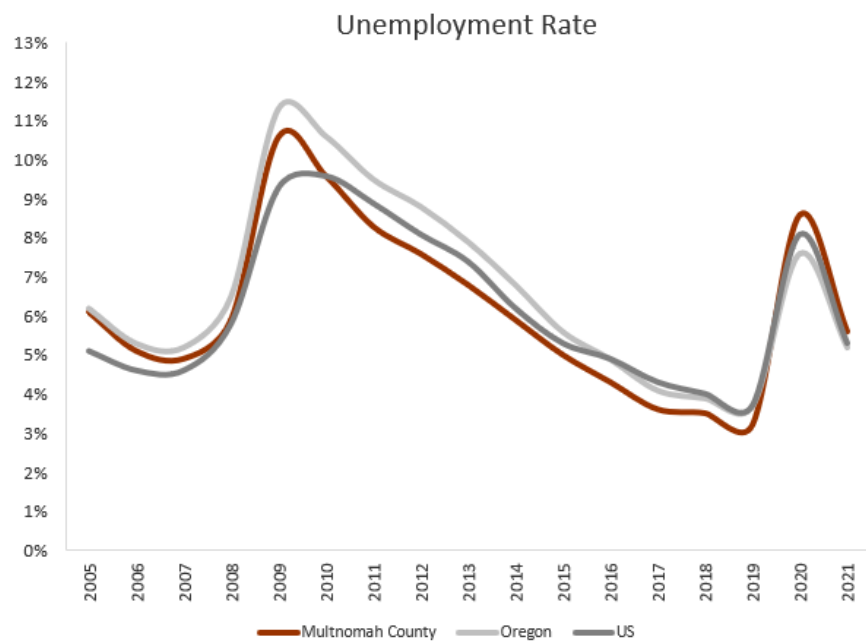
Sources: American Community Survey; Oregon University System; Portland Pulse



Employment and Industry

Employment

Like the rest of the Country, Multnomah County has experienced rapid job growth as industries continue to recover from the Pandemic. Total nonfarm employment in the County increased from 486,500 in May of 2021 to 507,000 in May 2022. The County remains short of the pre-pandemic job county of 540,000. Statewide, Oregon has gained back all but 10,000 jobs (or 0.5%) since the beginning of the pandemic. The County's unemployment rate decreased from 5.6% in May 2021 to 3.6% in May 2022.



Source: Oregon Labor Market Information System (OLMIS)

Industry

In 2021, there were 481,000 people employed in Multnomah County. The largest industries are Education and Health Services (118,475 people), Trade, Transportation, and Utilities (101,506 people). Compared to other counties, Multnomah County, OR has an unusually high number of residents working as Arts, Design, Entertainment, Sports, & Media Occupations (1.88 times higher than expected), Life, Physical, & Social Science Occupations (1.66 times), and Computer & Mathematical Occupations (1.43 times).

The Port of Portland operates Portland's harbor, and serves more than one thousand businesses in Oregon. Its major trading partners include Japan, South Korea, China, Taiwan and Mexico and it is the largest automobile import port in the United States.

Sources: World Port Source; TravelPortland.com, <https://datausa.io/profile/geo/multnomah-county-or#economy>

Transportation and Infrastructure

Roads and Highways

Portland International Airport

TriMet

Multnomah County is served by an international passenger airport, a local bus and light rail system, and the interstate highway system. According to the 2019 American Community Survey, approximately 63.1% of Multnomah County workers age 16 and older drive alone to work. Over 11.9% take public transportation, 9.2% carpool, 6.8% worked from home, 3.4% bike to work and the remainder get to work by walking or other means of transportation.

Multnomah County is connected to the wider region by seven major highways: Interstates 5, 84, 205, and 405 and U.S. Highways 26, 30, and 99. The County operates and maintains over 275 miles of roads and 24 vehicular bridges, including 6 bridges over the Willamette River.

Portland International Airport is located on the northern border of Multnomah County. Portland International Airport handled 11.6 million domestic and 181 thousand international passengers in 2021. The airport also serves as a regional hub for flights to smaller cities in Oregon and other Western destinations.

The Tri-County Metropolitan Transportation District (TriMet) operates approximately 84 bus lines, a light rail system, and a commuter rail system that together connect Multnomah County with neighboring areas. Riders boarded a TriMet bus, MAX train, WES train or LIFT Cab nearly 40.1 million times in FY 2021, down over 50% from FY 2020.

Sources: American Community Survey; Port of Portland; TriMet



Culture and Recreation

Arts and Entertainment



Recreation

Multnomah County is a regional destination for the visual and performing arts and hosts numerous festivals, concerts, and sporting events every year. The County also has a mild climate and extensive public space for relaxing or exploring.

The County is home to major arts and cultural institutions, including the Lan Su Chinese Garden, Oregon Museum of Science and Industry, the Oregon Symphony, and the Portland Art Museum. Festivals are held year-round in Multnomah County, including the Oregon Seafood and Wine festival, the Portland Rose Festival, the Mt. Hood Jazz Festival, and the Oregon Brewer's Festival.

Multnomah County is also home to four professional sports teams: the Portland Trail Blazers (National Basketball Association), the Portland Winterhawks (Western Hockey League), the Portland Thorns (National Women's Soccer League), and the Portland Timbers (Major League Soccer).

Multnomah County is home to over 37,000 acres of parks and numerous natural areas. The gateway to the scenic Columbia River Gorge is located in eastern Multnomah County. The Gorge is a spectacular river canyon, 80 miles long and up to 4,000 feet deep, with numerous areas for hiking, camping, boating, and day trips. Portland's Forest Park, the largest urban forested natural area in the nation, covers over 5,000 acres of urban land and has over 70 miles of trails. The County also houses Portland's International Rose Test Garden, the oldest rose garden in the nation.



Columbia River Gorge

Climate

Multnomah County typically has a mild climate that is heavily moderated by the Pacific Ocean. January and February are typically the coldest months with an average low of 36 degrees Fahrenheit. July and August are the hottest months with an average high of 81 degrees Fahrenheit. Multnomah County experiences greater cloud cover and precipitation during winter months – there is an average of 5.49 inches of precipitation in December, while the average for August is 0.67 inches.

Fun Facts

- Portland’s name came from the results of a coin toss by founders Asa Lovejoy from Boston, Massachusetts, and Francis Pettygrove of Portland, Maine who wanted to name the city after their hometowns.
- There is no sales tax in Oregon.
- “The Simpsons” creator Matt Groening’s hometown is Portland and many of the show’s characters are named after Portland streets and locations.
- The Portland Saturday Market is the country’s largest continuously operating open-air crafts market.
- The Portland Rose Festival’s Junior Parade is the largest children’s parade in America.
- Powell’s City of Books that occupies an entire downtown Portland block is the world’s largest independent bookstore.
- Multnomah County is home to Mill Ends Park, the world’s smallest public park at 452 square inches.
- The sculpture Portlandia located on the Portland building in downtown Portland is the second largest hammered copper statue in the country, second only to the Statue of Liberty.

Sources: *The Weather Channel, Travel Portland, PortlandNeighborhood.com*



Meet Multnomah County

fy2023 adopted budget

