



Multnomah County

Special Election

Voters' Pamphlet

Nov. 7, 2017

Multilingual Voting Information Inside

Información de votación en el interior del panfleto

Информация о процессе голосования приведена внутри

Bên Trong Có Các Thông Tin Về Việc Bỏ Phiếu

投票信息请见正文。

Macluumaadka Codeynta Gudaha

#OregonVotes

Dear Multnomah County Voter:

This Voters' Pamphlet is for the November 2017 Special Election and is being mailed to residential households participating in this election. Only voters in Portland Community College, Alto Park Water and Hillsboro School districts will be receiving a ballot for this Special Election.

Here are a few things you should know:

- You can view your registration status at www.oregonvotes.gov/myvote. There you can check or update your voter registration or track your ballot. A registration card is also available on page three in this pamphlet. The voter registration deadline is Oct. 17, 2017.
- Ballots will be mailed beginning on Wednesday, Oct 18, 2017. If you don't receive your ballot by Oct. 26, 2017, please call 503-988-3720.
- Only voters in Portland Community College, Alto Park Water and Hillsboro School districts will be receiving a ballot for this Special Election. Your residence address determines those districts for which you may vote
- Voted ballots **MUST** be received at any County elections office in Oregon or official drop site location by **8:00 PM, Tuesday, November 7, 2017** to be counted.
- This Voters' Pamphlet is on our website: www.mcelections.org. Starting at 8:00 PM on election night, preliminary election results will be posted on our website and updated throughout the evening.

If you have any questions you can contact our office at: 503-988-3720.

Sincerely,

Tim Scott

Multnomah County Director of Elections

PLEASE NOTE: Multnomah County Elections prints information as submitted. We do not correct spelling, punctuation, grammar, syntax, errors or inaccurate information.

This pamphlet produced by Multnomah County Elections Division
1040 SE Morrison St. Portland OR, 97214 | 503-988-3720
www.mcelections.org



@MultCoElections



Table of Contents

General Information

Letter to Voter	M-01
Table of Contents	M-02
Voter Registration Card	M-03
Facts to Know about Voting and Elections	M-04
Return Your Ballot	M-05
Qué debemos saber sobre las elecciones y cómo votar	M-06
Envíe su boleta	M-07
Важная информация о выборах и голосовании	M-08
Верните ваш бюллетень	M-09
Các Điều cần Biết về việc Bỏ Phiếu và Bầu Cử.....	M-10
Gửi Trả Phiếu Bầu Cử Của Quý Vị	M-11
投票和选举须知.....	M-12
寄回您的选票	M-13
Xaqiiqooyinka lagu Ogaanayo wax ku saabsan Codeynta iyo Doorashooyinka	M-14
Soo Celi Boorashadaada	M-15
Portland Community College Measure 26-196	M-16
Arguments in Favor	M-17
Arguments in Opposition	M-20
Alto Park Water District Measure 26-195	M-21
Hillsboro School District Measure 34-278	M-22



Sign up to Track Your Ballot!

Get Your Virtual “I Voted” Sticker

Track Your Ballot! Know where your ballot is in the voting process and get a virtual “I Voted” sticker.

As a Multnomah County voter, you can sign up to receive alerts via text, phone or email. Know when your ballot is mailed out to you. After you vote and return your ballot, be alerted when it has been accepted for counting.

Inside the “Accepted Ballot” message you’ll also receive access to a special Oregon “I Voted” virtual sticker ready to share on social media.

Sign up online for Track Your Ballot at <https://multnomah.i3ballot.net/>. There is no charge to the voter for this service*. If you have any questions please call the Elections Office at (503) 988-3720 or email us at elections@multco.us.



Scan the QR code to sign up now!

*Text message charges may apply if you select the text message option. Consult your carrier.

Voter Registration Card



Use online voter resources to register
or update your registration status.
oregonvotes.gov

qualifications

Are you a citizen of the United States of America? yes no

Are you at least 17 years of age? yes no

If you mark no in response to either of these questions, do not complete this form.

personal information *required information

last name* first* middle

Oregon residence address (include apt. or space number)* city* zip code*

date of birth (month/day/year)* county of residence

phone email

mailing address (required if different than residence) city zip code

Oregon Driver's License/ID number

Provide a valid **Oregon Driver's License, Permit or ID:**

I do not have a valid **Oregon Driver's License/Permit/ID.**
The last 4 digits of my Social Security Number (SSN) are:

x x x - x x -

I do not have a valid Oregon Driver's License/ID or a SSN.
I have attached a copy of **acceptable identification.**

political party

Not a member of a party

Constitution

Democratic

Independent

Libertarian

Pacific Green

Progressive

Republican

Working Families

Other

signature *I swear or affirm that I am qualified to be an elector and I have told the truth on this registration.*

sign here date today

! *If you sign this card and know it to be false, you can be fined up to \$125,000 and/or jailed for up to 5 years.*

registration updates *Complete this section if you are updating your information.*

previous registration name previous county and state

home address on previous registration date of birth (month/day/year)

Return registration card to:

Multnomah County Elections
1040 SE Morrison St., Portland, OR 97214

By the October 17, 2017 voter registration deadline

Facts to Know about Voting and Elections

Who can register to vote in Oregon?

You can register to vote if you are a resident of Oregon, you are a citizen of the United States, and you are at least 17 years old. You will get your first ballot in the mail when you are 18. You must register to vote 21 days before Election Day to be able to vote in that election.

How do I register to vote?

Register to vote online with the Secretary of State oregonvotes.gov/myvote or by filling out a paper *Oregon Voter Registration Card*. You can get a paper card at the elections office, your public library, Oregon DMV or post office. You can also be signed up to vote as part of the Oregon Motor Voter Automatic Registration process through certain DMV interactions, but it will not happen right away.

How does vote by mail work?

All elections in Oregon are conducted by the county elections office. The elections office mails ballots directly to voters. Voters complete their ballots, and then return them to the county elections office in the mail or by putting them into an official ballot drop box.

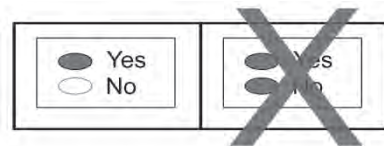
Vote by mail in a few simple steps:

1. Register to vote before the registration deadline. You will get a Voter Notification Card in the mail confirming that you are signed up to vote.
2. Four weeks before the election you will receive a Voters' Pamphlet in the mail.
3. Two weeks before the election you will receive your ballot in the mail. If you do not get a ballot contact the elections office for a new ballot.
4. Vote by filling out your ballot. You can ask for help with marking or understanding your ballot. Use a blue or black pen to mark your choices. You can leave something blank. You can write in a candidate for any race. If you make a mistake or lose your ballot contact the elections office for a new ballot.
5. Put your ballot in the return envelope. Check that your name and address are correct. You must **sign the return envelope** for your vote to count. If you are not able to sign because of a disability call the elections office for help.
6. Return your ballot by 8:00 PM on Election Day. You cannot change your vote once you have returned it.

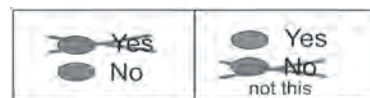
How do I vote my ballot?

Find the candidate or measure response (YES or NO) of your choice. Completely darken the oval to the left of your choice with blue or black ink. To vote for a write-in candidate who does not appear on the ballot, completely darken the oval to the left of the line provided for the office and write the full name of the candidate on that line. Make sure you have correctly marked your choice for each contest. Your official ballot will contain contests printed on both sides. Place the ballot in the return identification envelope. You may use the optional secrecy sleeve. Election staff protects the secrecy of your ballot. **Read the Voter's Statement on the return envelope and sign it on the signature line.** Your ballot will not be counted if the return envelope is not signed. Every signature is checked against the registration signature on file and the signatures must match for the ballot to be counted.

If you vote for more candidates than allowed for an office or if you vote **both Yes and No** on a measure, it is called an overvote and your vote **will not count** for that contest.



If you make a mistake or change your mind while marking your ballot, you may request a replacement ballot from the elections office or you may make your changes on the ballot. **Make your choice obvious** so that election workers inspecting each ballot can make sure your intent is understood and counted correctly. Two examples of how to make your voter intent clear are below.



Contact the Elections office if you make a mistake, your ballot is damaged or lost or for any other reason.

Contact:

Multnomah County Elections
503-988-3720

Oregon Relay Service: 1-800-735-2900

www.mcelections.org | elections@multco.us

Return Your Ballot



You can vote and then return your ballot as soon as you receive it. Mail your ballot with a first-class stamp or drop off your ballot at an official drop box site. Listed below are 24-hour ballot drop box sites and official ballot drop boxes securely located inside Multnomah County Library locations, available when the library is open. Call 503-988-5123, visit <http://bit.ly/2d7Vpf3> or see below for library hours. Ballots must arrive at the elections office or be put inside any official drop box in Oregon by 8:00 PM on Election Day. If you mail your ballot, make sure to do so five days before Election Day to make sure that it will arrive on time. **Postmarks do not count.**



24-Hour Drop Box Sites

- **Multnomah County Elections Office** - 1040 SE Morrison St. - Two drop box locations: 1st box located on East Side of **SE 11th Ave.** between SE Morrison St. & SE Belmont St. 2nd box is on North Side of **SE Belmont St.** between SE 10th Ave. & SE 11th Ave.
- **A-Boy Supply** - 7365 SW Barbur Blvd.
- **Central Library** - 801 SW 10th Ave. Book return on backside of library on SW 11th Ave.
- **Goodwill Store** - 3134 North Lombard St.
- **McDonalds** - West side of NE 40th Ave. between NE Tillamook St. & NE Hancock St. near Hollywood Library.
- **Midland Library** - 805 SE 122nd Ave.
- **Pioneer Courthouse Square** – 700 block of SW Broadway (next to Starbucks and across from Nordstrom - Walk Up Only Location).

Library Official Drop Sites

- **Albina Library** - 3605 NE 15th Ave.
 - **Capitol Hill Library** - 10723 SW Capitol Highway
 - **Gregory Heights Library** - 7921 NE Sandy Blvd.
 - **Holgate Library** - 7905 SE Holgate Blvd.
 - **Kenton Library** - 8226 N Denver Ave.
 - **North Portland Library** - 512 N Killingsworth St.
 - **Northwest Library** - 2300 NW Thurman St.
 - **St. Johns Library** - 7510 N Charleston Ave.
 - **Sellwood-Moreland Library** - 7860 SE 13th Ave.
 - **Woodstock Library** - 6008 SE 49th Ave.
 Mon – Tue : Noon – 8pm
 Wed – Sat : 10am – 6pm
 Sun : Noon – 5pm
-
- **Belmont Library** – 1038 SE César E. Chávez Blvd.
 - **Hillsdale Library** – 1525 SW Sunset Blvd.
 - **Hollywood Library** – 4040 NE Tillamook St.
 - **Midland Library** – 805 SE 122nd Ave.
 Mon, Fri & Sat : 10am – 6pm
 Tue : 10am – 8pm
 Wed – Thurs : Noon – 8pm
 Sun : 10am – 5pm
-
- **Central Library** - 801 SW 10th Ave.
 Mon : 10am – 8pm
 Tue – Wed : Noon – 8pm
 Thurs – Sat : 10am – 6pm
 Sun : 10am – 5pm

Qué debemos saber sobre las elecciones y cómo votar

¿Quiénes pueden inscribirse para votar en Oregón?

Usted puede inscribirse para votar si es residente de Oregón, es ciudadano de los Estados Unidos y tiene al menos 17 años de edad. Usted recibirá por correo su primera boleta para votar cuando tenga 18 años de edad. Debe inscribirse para votar 21 días antes del día de las elecciones para poder votar en esas elecciones.

¿Cómo me inscribo para votar?

Inscríbase en Internet en el sitio web de la Secretaría de Estado oregonvotes.gov/myvote o llene la versión impresa de la *Tarjeta de inscripción de elector de Oregón*. Solicite su tarjeta impresa en la oficina de elecciones, en su biblioteca pública, en la oficina del Departamento de Vehículos Automotores de Oregón (DMV) o en la oficina postal. También puede inscribirse para votar como parte del proceso de inscripción automática *Oregon Motor Voter Automatic Registration* a través de ciertas interacciones con el DMV, aunque la inscripción no es inmediata.

¿Cómo se vota por correo?

Todas las elecciones en Oregón se realizan en la oficina de elecciones del condado. Esta oficina envía las boletas por correo directamente a los electores. Los electores llenan sus boletas y las envían de vuelta a la oficina de elecciones del condado por correo o las colocan en un buzón de recepción oficial.

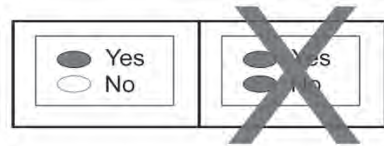
Vote por correo en pocos pasos:

1. Inscríbase para votar antes de la fecha límite para inscribirse. Después de inscribirse, recibirá por correo una tarjeta de notificación de elector que confirmará su inscripción.
2. Usted recibirá un panfleto para electores por correo cuatro semanas antes de las elecciones.
3. Usted recibirá su boleta para votar por correo dos semanas antes de las elecciones. Si no recibe una boleta, llame a la oficina de elecciones para obtener otra.
4. Llene la boleta para votar. Usted puede solicitar ayuda para marcar o comprender su boleta. Use un bolígrafo azul o negro para seleccionar sus opciones. También puede dejar opciones en blanco. Puede elegir candidatos en cualquiera de las categorías. Si comete un error o se le pierde la boleta, comuníquese con la oficina de elecciones para solicitar una boleta nueva.
5. Introduzca la boleta en el sobre de devolución. Asegúrese de que su nombre y dirección estén correctos. Usted debe **firmar el sobre de devolución** para que su voto cuente. Si tiene problemas para firmar debido a una discapacidad, llame a la oficina de elecciones para solicitar ayuda.
6. Devuelva su boleta a más tardar a las 8:00 p.m. el día de las elecciones. No podrá cambiar su voto una vez que haya entregado la boleta.

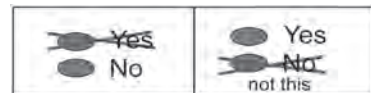
¿Cómo votar utilizando la boleta?

Halle el candidato o la respuesta afirmativa o negativa (YES o NO) a una medida que desee elegir. Rellene completamente con tinta azul o negra el óvalo que está a la izquierda de su elección. Si desea votar por un candidato no registrado que no aparezca en la boleta, rellene completamente el óvalo que está a la izquierda de la línea que provee la oficina de elecciones y escriba el nombre completo del candidato en dicha línea. Asegúrese de que ha marcado correctamente su elección en cada una de las contiendas electorales. Su boleta oficial tendrá contiendas electorales impresas en ambos lados. Introduzca la boleta en el sobre de devolución identificado. Si lo desea, puede usar la carpeta de privacidad opcional. El personal de las elecciones protegerá la confidencialidad de su boleta. **Lea la "Declaración del elector" en el sobre de devolución y fírmelo en la línea correspondiente.** Su boleta no tendrá validez si no firma el sobre de devolución. Cada firma se compara con la firma registrada en nuestros expedientes y ambas deben coincidir para que la boleta tenga validez.

Si usted vota por más candidatos de los que se permiten para un cargo público, o si vota **tanto** Yes (Sí) **como** No para alguna medida, esto se considera una *sobrevoto* y su voto no tendrá validez con respecto a esa contienda electoral.



Si comete un error o cambia de idea mientras marca la boleta, puede solicitar una boleta de reemplazo a la oficina de elecciones o puede indicar sus cambios en la boleta. **Asegúrese de que su elección sea obvia** para que el personal electoral que inspecciona cada boleta comprenda bien su intención y la contabilice correctamente. Los siguientes dos ejemplos muestran cómo indicar correctamente su intención.



Comuníquese con la oficina de elecciones si comete un error, si se daña o extravía su boleta o por cualquier otra razón.

Contacte a:

Oficina de Elecciones del Condado de Multnomah
503-988-3720

Servicio de retransmisión de Oregón:
1-800-735-2900

www.mcelections.org | elections@multco.us

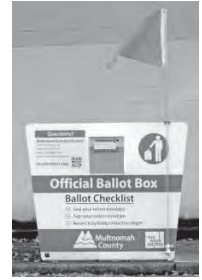
Envíe su boleta



Usted puede votar y enviar su boleta tan pronto como la reciba. Envíe la boleta por correo utilizando una estampilla postal estándar o colóquela en una de las localidades con buzones oficiales. A continuación, hay una lista de localidades con buzones donde puede colocar su voto las 24 horas del día, así como buzones oficiales protegidos en las

bibliotecas del Condado de Multnomah y disponibles durante sus horarios de trabajo. Llame al 503-988-5123, visite <http://bit.ly/2nGT3rR> o vea abajo los horarios de las bibliotecas. Las boletas deben llegar a la oficina de elecciones o deben colocarse en cualquier buzón oficial en Oregón antes de las 8:00 p.m. el día de las elecciones. Si envía su boleta por correo, asegúrese de hacerlo cinco días antes del día de las elecciones para que llegue a tiempo.

La información en el matasellos no tiene validez.



Sitios con buzones oficiales las 24 horas

- **Oficina de Elecciones del Condado de Multnomah** - 1040 SE Morrison St. - Dos buzones oficiales: 1er buzón en el lado este de **SE 11th Ave.** entre SE Morrison St. y SE Belmont St.; 2º buzón en el lado norte de **SE Belmont St.** entre SE 10th Ave. y SE 11th Ave.
- **A-Boy Supply** - 7365 SW Barbur Blvd.
- **Biblioteca Central** - 801 SW 10th Ave., donde se devuelven los libros, detrás de la biblioteca, en SW 11th Ave.
- **Tienda Goodwill** - 3134 North Lombard St.
- **McDonalds** - Lado oeste de NE 40th Ave. entre NE Tillamook St. y NE Hancock St. cerca de la Biblioteca Hollywood.
- **Biblioteca Midland** - 805 SE 122nd Ave.
- **Pioneer Courthouse Square** – Bloque 700 de SW Broadway (enseguida del Starbucks y frente a Nordstrom - Ubicación disponible únicamente caminando).

Bibliotecas con buzones oficiales

- **Biblioteca Albina** - 3605 NE 15th Ave.
 - **Biblioteca Capitol Hill** - 10723 SW Capitol Highway
 - **Biblioteca Gregory Heights** - 7921 NE Sandy Blvd.
 - **Biblioteca Holgate** - 7905 SE Holgate Blvd.
 - **Biblioteca Kenton** - 8226 N Denver Ave.
 - **Biblioteca North Portland** - 512 N Killingsworth St.
 - **Biblioteca Northwest** - 2300 NW Thurman St.
 - **Biblioteca St. Johns** - 7510 N Charleston Ave.
 - **Biblioteca Sellwood-Moreland** - 7860 SE 13th Ave.
 - **Biblioteca Woodstock** - 6008 SE 49th Ave.
 lun. - mar. : mediodía – 8 p.m.
 mié. - sáb. : 10 a.m. - 6 p.m.
 dom. : mediodía - 5 p.m.
-
- **Biblioteca Belmont** – 1038 SE César E. Chávez Blvd.
 - **Biblioteca Hillsdale** – 1525 SW Sunset Blvd.
 - **Biblioteca Hollywood** – 4040 NE Tillamook St.
 - **Biblioteca Midland** – 805 SE 122nd Ave.
 lun. vie. y sáb. : 10 a.m. - 6 p.m.
 mar. : 10 a.m. - 8 p.m.
 mié. - jue. : mediodía - 8 p.m.
 dom. : 10 a.m. - 5 p.m.
-
- **Biblioteca Central** - 801 SW 10th Ave.
 lun. : 10 a.m. - 8 p.m.
 mar. - mié. : mediodía - 8 p.m.
 jue. - sáb. : 10 a.m. - 6 p.m.
 dom. : 10 a.m. - 5 p.m.

Важная информация о выборах и голосовании

Кто может зарегистрироваться для участия в голосовании в штате Орегон?

Вы можете зарегистрироваться для участия в голосовании, если вы являетесь жителем штата Орегон и гражданином Соединённых Штатов, и вам не менее 17 лет. Вы получите свой первый избирательный бюллетень по почте после того, как вам исполнится 18 лет. Вы должны зарегистрироваться для участия в предстоящих выборах за 21 день до голосования.

Как зарегистрироваться для участия в голосовании?

Вы можете зарегистрироваться в режиме онлайн на вебсайте секретаря штата oregonvotes.gov/myvote или заполнить *учётную карту избирателя штата Орегон (Oregon Voter Registration Card)*. Учётную карту можно получить в отделе по организации выборов, публичной библиотеке, Департаменте штата Орегон по регистрации транспортных средств (DMV) или на почте. Вас также могут зарегистрировать в рамках действующей в штате Орегон автоматической регистрации избирателей при получении водительского удостоверения (Motor Voter), однако это длительный процесс.

Как проходит голосование по почте?

В штате Орегон все выборы проводятся окружными отделами по организации выборов. Каждый окружной отдел отправляет бюллетени непосредственно избирателям данного округа. Избиратели заполняют бюллетени и возвращают их в окружной отдел по организации выборов по почте или опускают их в один из официальных ящиков для избирательных бюллетеней.

Для голосования по почте необходимо выполнить несколько простых шагов:

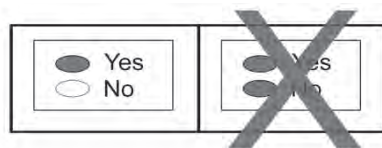
1. Зарегистрируйтесь для участия в голосовании в установленные для этого сроки. Вы получите по почте карточку-уведомление избирателя (Voter Notification Card), подтверждающую, что вы зарегистрированы для участия в голосовании.
2. За четыре недели до выборов вы получите по почте «Руководство для избирателя» (Voters' Pamphlet).
3. За две недели до выборов вы получите по почте ваш избирательный бюллетень. Если вы не получите бюллетень, обратитесь в отдел по организации выборов, чтобы вам прислали новый бюллетень.
4. Для того чтобы проголосовать, вы должны заполнить бюллетень. Вы можете попросить, чтобы вам помогли разобраться в бюллетене или сделать в нём соответствующие отметки. Отметки нужно делать ручкой с синими или чёрными чернилами. Вы можете не заполнять какую-либо графу. Вы можете вписать своего кандидата на любой пост. Если вы сделаете ошибку или потеряете свой бюллетень, обратитесь в отдел по организации выборов, чтобы получить новый.
5. Вложите бюллетень в прилагаемый конверт с обратным адресом. Проверьте правильность написания вашего имени, фамилии и адреса. Для того чтобы ваш голос был засчитан, вы должны **подписать конверт для возврата бюллетеня**. Если из-за инвалидности вы не можете подписать конверт, обратитесь за помощью в отдел по организации выборов.

6. Верните ваш бюллетень к 20:00 в день выборов. После того как вы вернёте свой бюллетень, вы не сможете изменить принятых вами решений.

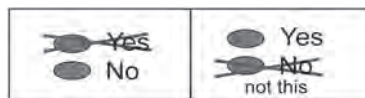
Как правильно заполнить избирательный бюллетень?

Выберите кандидата, за которого вы хотите проголосовать, или ответ на вынесенное на голосование решение (ДА или НЕТ). Полностью закрасьте овал слева от выбранного вами ответа ручкой с синими или чёрными чернилами. Если вы вписываете своего кандидата, не указанного в бюллетене, полностью закрасьте овал слева от пустой строки для этой позиции и впишите имя и фамилию кандидата в этой строке. Убедитесь в том, что вы правильно отметили свой выбор. В официальном бюллетене фамилии кандидатов и выставленные на голосование решения напечатаны на обеих сторонах листа. Вложите бюллетень в конверт с обратным адресом, удостоверяющий вашу личность. При желании вы также можете использовать дополнительный секретный конверт. Работники по проведению выборов обеспечат сохранность в тайне вашего бюллетеня. **Прочитайте заявление избирателя (Voter's Statement) на конверте для возврата бюллетеня и подпишите его в строке для подписи.** Если вы не подпишете конверт, ваш бюллетень будет недействителен. Каждую подпись сверяют с подписью, сделанной при регистрации, и бюллетень будет считаться действительным только в том случае, если подписи будут совпадать.

Если вы отметите больше кандидатов на ту или иную должность, чем разрешено, или проголосуете **одновременно «да» и «нет»** в отношении выставленного на голосование решения, это будет считаться переголосованием, и ваш голос по этому пункту **не будет учитываться.**



Если при заполнении бюллетеня вы сделаете ошибку или захотите изменить свой выбор, вы можете обратиться в отдел по организации выборов, чтобы получить новый бюллетень или внести соответствующие исправления. **Чётко обозначьте ваш выбор,** чтобы работники отдела по организации выборов, проверяющие каждый бюллетень, могли правильно понять и засчитать ваш голос. Ниже приводятся два примера того, как вы должны обозначить ваш выбор в бюллетене.



Обращайтесь в отдел по организации выборов в том случае, если сделаете ошибку, испортите или потеряете свой бюллетень, либо по любой другой причине.

Контактная информация:

Отдел по организации выборов округа Малтнома (Multnomah County Elections) 503-988-3720
Релейная служба штата Орегон (Oregon Relay Service): 1-800-735-2900
www.mcelections.org | elections@multco.us

Верните ваш бюллетень



Вы можете проголосовать и отправить свой заполненный избирательный бюллетень обратно сразу после его получения. Отправьте свой избирательный бюллетень почтовым отправлением первого класса или опустите его в специальную урну в одном из официальных пунктов для сбора избирательных бюллетеней. Ниже приведён перечень круглосуточных пунктов с официальными урнами для сбора избирательных

бюллетеней во время голосования, которые установлены с учётом требования об обеспечении тайны голосования в различных филиалах библиотеки округа Малтнома, и доступны в часы работы библиотеки. Часы работы библиотеки можно узнать, позвонив по телефону 503-988-5123, на вебсайте <http://bit.ly/2n4Be2Y> или из информации, приведённой ниже. Избирательные бюллетени должны быть доставлены на избирательный участок или опущены в урну для сбора

избирательных бюллетеней в одном из официальных избирательных пунктов в штате Орегон до 20:00 часов в день выборов. Если вы отправляете свой избирательный бюллетень по почте, пожалуйста, обязательно сделайте это за пять дней до дня выборов для того, чтобы он был получен своевременно. **Дата отправления, указанная в почтовом штемпеле, не принимается во внимание.**



Избирательные ящики с круглосуточным доступом

- **Комиссия по подготовке к выборам округа Малтнома** - 1040 SE Morrison St. – два избирательных ящика: 1-й ящик находится на восточной стороне **SE 11th Ave.** между SE Morrison St. и SE Belmont St. 2-й ящик находится на северной стороне **SE Belmont St.** между SE 10th Ave. и SE 11th Ave.
- **Магазин A-Boy Supply** - 7365 SW Barbur Blvd.
- **Библиотека Central** - 801 SW 10th Ave. пункт возврата книг с тыльной стороны библиотеки на SW 11th Ave.
- **Магазин Goodwill** - 3134 North Lombard St.
- **McDonalds** – на западной стороне NE 40th Ave. между NE Tillamook St. и NE Hancock St. около Hollywood Library.
- **Библиотека Midland** - 805 SE 122nd Ave.
- **Городская площадь Pioneer Courthouse** – 700 SW Broadway (рядом с кафетерием Starbucks и через дорогу от магазина Nordstrom – можно пройти только пешком).

Избирательные ящики в библиотеках

- **Библиотека Albina** - 3605 NE 15th Ave.
 - **Библиотека Capitol Hill** -10723 SW Capitol Hwy
 - **Библиотека Gregory Heights** - 7921 NE Sandy Blvd.
 - **Библиотека Holgate** - 7905 SE Holgate Blvd.
 - **Библиотека Kenton** - 8226 N Denver Ave.
 - **Библиотека North Portland** - 512 N Killingsworth St.
 - **Библиотека Northwest** - 2300 NW Thurman St.
 - **Библиотека St. Johns** - 7510 N Charleston Ave.
 - **Библиотека Sellwood-Moreland** - 7860 SE 13th Ave.
 - **Библиотека Woodstock** - 6008 SE 49th Ave.

Понедельник –	
вторник:	12:00 – 20:00
Со среды по	
субботу:	10:00 – 18:00
Воскресенье:	12:00 – 17:00
-
- **Библиотека Belmont** – 1038 SE César E. Chávez Blvd.
 - **Библиотека Hillsdale** – 1525 SW Sunset Blvd.
 - **Библиотека Hollywood** – 4040 NE Tillamook St.
 - **Библиотека Midland** – 805 SE 122nd Ave.

Понедельник,	
пятница и	10:00 – 18:00
суббота:	
Вторник:	10:00 – 20:00
Среда – четверг:	12:00 – 20:00
Воскресенье:	10:00 – 17:00
-
- **Библиотека Central** - 801 SW 10th Ave.

Понедельник:	10:00 – 20:00
Вторник – среда:	12:00 – 20:00
С четверга по	
субботу:	10:00 – 18:00
Воскресенье:	10:00 – 17:00

Các Điều cần Biết về việc Bỏ Phiếu và Bầu Cử

Ai có thể ghi danh đi bỏ phiếu ở Oregon?

Quý vị có thể ghi danh đi bỏ phiếu nếu quý vị sinh sống tại (cư dân của) tiểu bang Oregon, quý vị là một công dân của Hoa Kỳ, và quý vị đủ 17 tuổi. Quý vị sẽ nhận được lá phiếu đầu tiên của mình trong hộp thư khi quý vị đủ 18 tuổi. Quý vị phải ghi danh đi bỏ phiếu 21 ngày trước Ngày Bầu Cử để có thể bỏ phiếu cho lần bầu cử đó.

Tôi ghi danh bỏ phiếu như thế nào?

Ghi danh đi bỏ phiếu với Thư Ký của Tiểu Bang oregonvotes.gov/myvote hoặc bằng cách điền vào *Thẻ Ghi Danh Cử Tri Tiểu Bang Oregon*. Quý vị có thể nhận một thẻ ghi danh tại văn phòng bầu cử, thư viện công cộng của quý vị, Oregon DMV, hoặc bưu điện. Quý vị cũng có thể được ghi danh bỏ phiếu như là một phần của quy trình Ghi Danh Cử Tri Tự Động dành cho Xe cơ giới của tiểu bang Oregon thông qua các tương tác cụ thể tại DMV, nhưng điều đó sẽ không xảy ra ngay lập tức.

Bỏ phiếu qua đường bưu điện hoạt động như thế nào?

Tất cả các cuộc bầu cử ở tiểu bang Oregon đều được thực hiện bởi văn phòng bầu cử hạt. Văn phòng bầu cử hạt gửi phiếu bầu trực tiếp đến cử tri qua đường bưu điện. Cử tri điền đầy đủ vào phiếu bầu, sau đó gửi chúng về văn phòng bầu cử hạt qua đường bưu điện hoặc bỏ phiếu vào hộp bỏ phiếu chính thức.

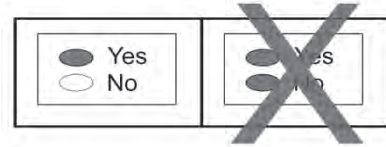
Bỏ phiếu qua đường bưu điện chỉ trong vài bước đơn giản:

1. Ghi danh đi bỏ phiếu trước khi đến thời hạn chót cho việc ghi danh. Quý vị sẽ nhận được một Thẻ Thông Báo Cử Tri trong hộp thư để xác nhận rằng quý vị đã được ghi danh đi bỏ phiếu.
2. Quý vị sẽ nhận được Sổ Tay Cử Tri trong hộp thư trước cuộc bầu cử bốn tuần.
3. Quý vị sẽ nhận được phiếu bầu của mình trong hộp thư trước cuộc bầu cử hai tuần. Nếu quý vị không nhận được phiếu bầu, xin liên hệ văn phòng bầu cử để nhận lá phiếu mới.
4. Bầu chọn bằng cách điền vào phiếu bầu của quý vị. Quý vị có thể nhờ trợ giúp đánh dấu phiếu bầu hoặc trợ giúp để hiểu rõ hơn về phiếu bầu của quý vị. Sử dụng bút xanh dương hoặc bút đen để đánh dấu các lựa chọn của quý vị. Quý vị có thể để trống. Quý vị có thể điền tên một ứng cử viên trong bất kỳ cuộc bầu cử nào. Nếu quý vị có sai sót hoặc làm mất phiếu bầu, xin liên hệ văn phòng bầu cử để nhận lá phiếu mới.
5. Bỏ lá phiếu vào phong thư gửi trả lại. Kiểm tra tên và địa chỉ của quý vị xem có chính xác hay chưa. Quý vị phải **ký tên vào phong thư gửi trả lại** để lá phiếu của quý vị hợp lệ. Nếu quý vị không thể ký tên vì có khiếm khuyết, xin gọi cho văn phòng bầu cử để được trợ giúp.
6. Gửi trả phiếu bầu trước 8 giờ tối vào Ngày Bầu Cử. Quý vị không thể thay đổi sự bầu chọn của mình một khi quý vị đã gửi trả lại phiếu bầu.

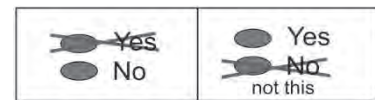
Tôi bầu chọn như thế nào

Tìm ứng cử viên hoặc đánh giá lựa chọn (YES-Có hoặc NO-Không) của quý vị. Tô đen hoàn toàn hình bầu dục (hình trái xoan) ở bên trái lựa chọn của quý vị bằng mực xanh dương hoặc đen. Để bỏ phiếu cho một ứng cử viên không có tên trong phiếu bầu bằng cách điền tên, tô đen hoàn toàn hình bầu dục bên trái của dòng dành cho văn phòng và ghi tên đầy đủ của ứng cử viên lên dòng đó. Xin hãy chắc chắn rằng quý vị đã đánh dấu một cách chính xác lựa chọn của mình cho mỗi mục tranh cử. Phiếu bầu chính thức của quý vị sẽ có ghi các mục tranh cử được in trên cả hai mặt giấy. Bỏ lá phiếu vào phong thư nhận dạng gửi trả lại. Quý vị có thể sử dụng tấm giấy chắn bảo mật tùy chọn. Nhân viên bầu cử bảo mật phiếu bầu của quý vị. **Đọc phần Tuyên Bố của Cử Tri trên phong thư gửi trả lại và ký tên vào dòng ghi chữ ký** Phiếu bầu của quý vị sẽ không được coi là hợp lệ nếu phong thư gửi trả lại không có chữ ký. Mỗi chữ ký sẽ được đối chiếu với chữ ký lúc đăng ký có lưu trong hồ sơ và các chữ ký phải giống nhau để phiếu bầu được xem là hợp lệ.

Nếu quý vị bỏ phiếu cho nhiều ứng cử viên cho một văn phòng nhiều hơn mức cho phép hoặc nếu quý vị đánh dấu **Yes** và **No** trên cùng một dòng, điều đó được gọi là bỏ phiếu dư và việc bỏ phiếu của quý vị sẽ **không được tính** cho mục bầu cử đó.



Nếu quý vị mắc sai sót hoặc đổi ý khi đánh dấu phiếu bầu, quý vị có thể yêu cầu một lá phiếu thay thế từ văn phòng bầu cử hoặc quý vị có thể sửa trên phiếu bầu. **Đánh dấu lựa chọn của quý vị một cách rõ ràng** để các nhân viên bầu cử làm nhiệm vụ kiểm tra phiếu bầu có thể hiểu đúng ý định của quý vị và kiểm đếm chính xác. Hai ví dụ sau thể hiện cách làm rõ ý định bầu chọn của quý vị.



Liên hệ văn phòng Bầu Cử nếu quý vị mắc sai sót, lá phiếu của quý vị bị hư hại hoặc bị thất lạc hoặc vì bất cứ lý do gì.

Liên hệ:

Multnomah County Elections: 503-988-3720
Oregon Relay Service: 1-800-735-2900
www.mcelections.org | elections@multco.us

Gửi Trả Phiếu Bầu Của Quý Vị



Quý vị có thể bắt đầu bầu chọn và gửi trả phiếu bầu của mình ngay khi vừa nhận được nó. Gửi phiếu bầu của quý vị với tem hạng nhất hoặc bỏ phiếu bầu của quý vị tại một địa điểm có thùng bỏ phiếu chính thức. Được liệt kê dưới đây là các địa điểm có thùng bỏ phiếu chính thức mở cửa 24 giờ, thùng bỏ phiếu chính thức nằm an toàn bên trong

mỗi Thư Viện Hạt Multomah, có thể bỏ phiếu vào thùng phiếu khi thư viện mở cửa. Gọi 503-988-5123, ghé thăm trang mạng

<http://bit.ly/2njAjhb> hoặc xem bên dưới để biết giờ mở cửa của thư viện.

Các phiếu bầu phải được gửi đến văn phòng bầu cử hoặc được bỏ vào bên trong bất kỳ thùng bỏ phiếu chính thức nào tại tiểu bang Oregon

trước 8 giờ tối Ngày Bầu Cử. Nếu quý vị gửi phiếu bầu qua đường bưu

điện, hãy làm điều đó vào 5 ngày trước Ngày Bầu Cử để chắc chắn rằng nó sẽ đến nơi đúng giờ. **Dấu bưu điện không được tính.**



Các Địa Điểm Có Thùng Bỏ Phiếu Mở Cửa 24 Giờ

- **Văn Phòng Bầu Cử Hạt Multomah** - 1040 SE Morrison St. - Hai địa điểm có thùng bỏ phiếu: Thùng thứ Nhất đặt tại Phía Đông của đường **SE 11th Ave.** giữa SE Morrison St. & SE Belmont St. Thùng thứ Hai đặt tại Phía Bắc của đường **SE Belmont St.** giữa SE 10th Ave. & SE 11th Ave.
- **A-Boy Supply** - 7365 SW Barbur Blvd.
- **Thư Viện Central** - 801 SW 10th Ave. Nơi trả sách ở phía sau của thư viện trên đường SW 11th Ave.
- **Goodwill Store** - 3134 North Lombard St.
- **McDonalds** - Phía Tây của đường NE 40th Ave. nằm giữa NE Tillamook St. và NE Hancock St. gần Thư Viện Hollywood
- **Thư Viện Midland** - 805 SE 122nd Ave.
- **Pioneer Courthouse Square** – block 700 của đường SW Broadway (kế Starbucks đối diện Nordstrom - Địa Điểm Chỉ Dành Cho Đi Bộ).

Các Địa Điểm Thư Viện Có Thùng Bỏ Phiếu Chính Thức

- **Thư Viện Albina** - 3605 NE 15th Ave.
 - **Thư Viện Capitol Hill** - 10723 SW Capitol Highway
 - **Thư Viện Gregory Heights** - 7921 NE Sandy Blvd.
 - **Thư Viện Holgate** - 7905 SE Holgate Blvd.
 - **Thư Viện Kenton** - 8226 N Denver Ave.
 - **Thư Viện North Portland** - 512 N Killingsworth St.
 - **Thư Viện Northwest** - 2300 NW Thurman St.
 - **Thư Viện St. Johns** - 7510 N Charleston Ave.
 - **Thư Viện Sellwood-Moreland** - 7860 SE 13th Ave.
 - **Thư Viện Woodstock** - 6008 SE 49th Ave.
Thứ Hai – Thứ Ba : Giữa Trưa - 8 giờ tối
Thứ Tư – Thứ Bảy : 10 giờ sáng – 6 giờ chiều
Chủ Nhật : Giữa Trưa - 5 giờ chiều
-
- **Thư Viện Belmont** – 1038 SE César E. Chávez Blvd.
 - **Thư Viện Hillsdale** – 1525 SW Sunset Blvd.
 - **Thư Viện Hollywood** – 4040 NE Tillamook St.
 - **Thư Viện Midland** – 805 SE 122nd Ave.
Thứ Hai, Thứ Sáu và Thứ Bảy : 10 giờ sáng – 6 giờ chiều
Thứ Ba : 10 giờ sáng – 8 giờ tối
Thứ Tư - Thứ Năm : Giữa Trưa - 8 giờ tối
Chủ Nhật : 10 giờ sáng – 5 giờ chiều
-
- **Thư Viện Central** - 801 SE 10th Ave.
Thứ Hai : 10 giờ sáng – 8 giờ tối
Thứ Ba - Thứ Tư : Giữa Trưa - 8 giờ tối
Thứ Năm - Thứ Bảy : 10 giờ sáng – 6 giờ chiều
Chủ Nhật : 10 giờ sáng – 5 giờ chiều

投票和选举须知

哪些人可以在俄勒冈州登记投票？

年满 17 周岁，且居住在俄勒冈州的美国公民可登记投票。年满 18 周岁的公民可以通过邮件获得自己的第一张选票。必须在选举日之前 21 天进行投票登记，才能在该次选举中投票。

我该如何登记投票？

在俄勒冈州务卿网站 oregonvotes.gov/myvote 进行网上登记投票，填写纸质 **俄勒冈州选民登记卡** 登记投票。您可以在选举办公室、当地公共图书馆、俄勒冈车管局(DMV)或邮局领取纸质登记卡。您也可以车管局(DMV)办理业务时，通过“俄勒冈州汽车选民自动登记”程序注册投票，但不会立即生效。

邮寄选票如何操作？

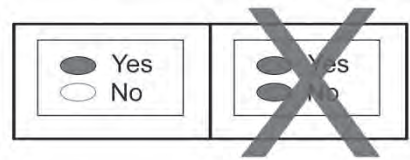
俄勒冈州所有选举都由郡选举办公室完成。郡选举办公室直接把选票邮寄给选民。选民填写完成他们的选票，然后将选票邮寄回郡选举办公室或投入官方投票箱。

您可以通过如下简单步骤邮寄投票：

1. 在登记截止日期之前投票。您将收到邮寄给您的选民通知卡，确认您已登记投票。
2. 选举开始四周前，您将收到邮寄给您的选民手册。
3. 选举两周前您将收到邮寄给您的选票。如果您未收到您的选票，请致电选举办公室索取新选票。
4. 填写选票进行投票。您可以就有关标记和理解选项的相关问题寻求帮助。请您用黑色或蓝色的笔标记您的选项。部分内容可不填。您可以自由选择任何族裔的候选人。如果您错填或遗失了选票，请致电选举办公室索取新选票。
5. 将您的选票装进回函信封中。确认您的姓名及地址信息填写正确无误。您必须在**回函信封上签名**，投票方可生效。如果您因残疾原因无法在回函信封上签名，请致电选举办公室寻求帮助。
6. 请将您的选票在投票日晚上 8:00 前送达选举办公室。选票一经送达，即无法更改选项。

我该如何投票？

找到您所选的候选人或问题答案（是或否）。用黑色或蓝色墨水完整标记您选项左边的椭圆。要为选票上不存在的候选人投票，请将为该职位留出的线左侧的椭圆完全涂黑，并在线上写出候选人全名。请确保您已标记好每项竞选的选项。您的正式选票的正反面都会打印竞选内容。将您的选票装进回函信封中。您可以使用备选的保密信封。选举人员会为您的选票保密。**阅读回函信封上的投票人声明，并在签名处签名。**如果信封未签名，您的选票将不会生效。每个签名都会与备案的登记签名进行核对，签名相符投票方可生效。如果您某个职位投票的的候选人数超过规定人数，或对某个选项同时选了“是”和“否”，则被称作“重复投票”，您的投票对该项竞选无效。



如果您在填写选项时出错或想改变主意，您可以致电选举办公室请求更换选票，或直接在选票上更改。请明确标记您的选项，以便检查选票的选举工作人员可以确定理解您的意图并正确计票。以下为两个清晰标明的选项的示例。



如果您填错，或选票因任何原因损坏或丢失，请联系选举办公室。

联系方式：

蒙诺玛郡选举办公室

503-988-3720

俄勒冈转接服务: 1-800-735-2900

www.mcelections.org | elections@multco.us

寄回您的选票



收到选票后，您就可以填写选票，然后寄回。您可以贴一类邮票寄回您的选票，也可以在官方投票箱处投入选票。以下为蒙诺玛郡各图书馆内的 24 小时投票箱和官方投票箱，图书馆开放时间均可使用。请致电 503-988-5123，访问 <http://bit.ly/2mpOXUT> 或查看以下内容了解图书馆开放时间。选票在投票日晚上 8:00 前必须送达选举办公室或投入俄勒冈州官方投票箱方为有效。如果通过邮寄方式投票，请至少在在选举日前五天寄出您的选票以确保准时送达。不以邮戳时间为准。



24 小时投票箱地点

- **蒙诺玛郡选举办公室**——1040 SE Morrison St. -两个投票箱地址：第一个位于 **SE 11th Ave.** 东侧，在 SE Morrison St. 街和 SE Belmont St. 之间。第二个在 **SE Belmont** 街北侧，SE 10th Ave. 和 SE 11th Ave. 之间。
- **A-Boy Supply** - 7365 SW Barbur Blvd.。
- **中央图书馆** -801 SW 10th Ave.。 SW 11th Ave.图书馆背面还书处。
- **Goodwill Store** - 3134 North Lombard St.
- **McDonalds** - NE 40th Ave. 西侧。在 NE Tillamook St. 和 NE Hancock St. 之间，靠近好莱坞图书馆。
- **Midland 图书馆** -805 SE 122nd Ave.。
- **Pioneer Courthouse Square** - SW Broadway 700 幢（Starbucks 旁边，Nordstrom 对面 - 只可步行进入）。

图书馆官方投票地点

- **Albina 图书馆** - 3605 NE 15th Ave.
- **Capitol Hill 图书馆** - 10723 SW Capitol Highway
- **Gregory Heights 图书馆** - 7921 NE Sandy Blvd.
- **Holgate 图书馆** - 7905 SE Holgate Blvd.
- **Kenton 图书馆** - 8226 N Denver Ave.
- **North Portland 图书馆** - 512 N Killingsworth St.
- **Northwest 图书馆** - 2300 NW Thurman St.
- **St. Johns 图书馆** - 7510 N Charleston Ave.
- **Sellwood-Moreland 图书馆** - 7860 SE 13th Ave.
- **Woodstock 图书馆** - 6008 SE 49th Ave.

周一至周二： 中午 ——晚上 8 点
 周三至周六： 上午 10 点——下午 6 点
 周日： 中午 ——下午 5 点

- **Belmont 图书馆** - 1038 SE César E. Chávez Blvd.
- **Hillsdale 图书馆** - 1525 SW Sunset Blvd.
- **Hollywood 图书馆** - 4040 NE Tillamook St.
- **Midland 图书馆** -805 SE 122nd Ave.

周一、周五和 周六： 上午 10 点——下午 6 点
 周二： 上午 10 点——晚上 8 点
 周三——周四： 中午 ——晚上 8 点
 周日： 上午 10 点——下午 5 点

- **Central 中央图书馆** - SW 第 10 大道 801 号。
 周一： 上午 10 点——晚上 8 点
 周二——周三： 中午 ——晚上 8 点
 周四——周六： 上午 10 点——下午 6 点
 周日： 上午 10 点——下午 5 点

Xaqiiqooyinka lagu Ogaanayo wax ku saabsan Codeynta iyo Doorashooyinka

Yaa iska diiwaangelin kara inuu ka codeeyo Oregon?

Waad iska diiwaangelin kartaa inaad ka codeysid haddii aad tahay qof dagan Oregon, oo aad tahay muwaadin Mareykan ah, oo aad ugu yaraan tahay 17 sanno jir. Waxaad ka heleysaa codeyntaada koowaad boostada marka aad gaartid 18. Waa inaad is diiwaangelisaa si aad isaga codeysid 21 maalmo ka hor Maalinta Doorashada si ay kugu suurtoogasho inaad codeysid doorashadaas.

Sidee ayaan isugu diiwaangeliyaa codeynta?

Iskaga diiwangeli codeynta onleenka ee Xoghayaha Mareykanka oregonvotes.gov/myvote ama adiga oo buuxinaya *kaarka Diiwaangelinta Codeeyaha Oregon*. Waxaad ka heli kartaa kaarka warqada xafiiska doorashooyinka, maktabadaada bulshadda, Oregon DMV ama xafiiska boostada. Waxaad sidoo kale iska diiwaangelin kartaa illaa codeynta iyaddoo qeyb ka ah nidaamka Diiwaangelinta Tooska ah ee Hal kudhiga Codeeyaha Oregon ee dhinaca isdhaxgalada qaarkood ee DMV, laakin isla markaas ma dhaceyso.

Sidee ayay codeynta boosta u shaqeysaa?

Dhammaan doorashooyinka Oregon waxaa lagu qabtaa xafiiska doorashooyinka gobolka. Xafiiska doorashooyinka ayaa si toos ah ugu soo diro waraaqaha codeynta codeeyayaasha. Codeeyayaasha ayaa buuxiyi waraaqaha codeynta, oo kadib ku celiya xafiiska doorashada gobolka oo boostada ama adiga oo gelinayo sanduuqa codeynta rasmiga ah.

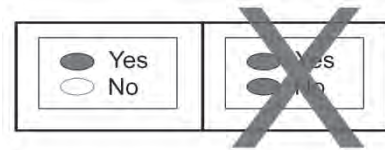
Codeynta boosta ahaan oo dhowr tallaabooyin fudud ah:

1. Iska diiwaangeli si aad u codeysid ka hor dhammaadka waqtiga diiwaan gelinta. Waxaad ka heleysaa Kaarka Ogeysiinta Codeeyaha boostada oo xaqiijineysa inaad ka diiwaangashantahay codeynta.
2. Afar todobaad doorashada ka hor waxaad ku heleysaa Buugyaraha Codeeyaha boostada.
3. Labo todobaad doorashada kahor waxaad ku heleysaa waraaqaha codeyntaada boostada. Haddii aadan helin waraaqaha codeynta la xidhiidh xafiiska doorashooyinka wixii waraaqaha codeynta cusub ah.
4. Ku codey adiga oo buuxinayo waraaqaha codeyntaada. Waxaad weydiisan kartaa caawimo calaamadinta ama fahanka waraaqaha codeyntaada. Isticmaal qalin buluug ama madow ah si aad u caalameysid ikhtiyaarkaaga. Wax banaan waad ka tagi kartaa. Waad ku qori kartaa musharaxa oo jinsiyad walba ah. Haddii aad qalad sameysid ama aad lumusid waraaqaha codeyntaada kala xiriir xafiiska doorashada wixii ah waraaqaha doorashada cusub.
5. Geli waraaqada codeyntaada bashqada soo celinta. Hubi in magacaaga iyo ciwaanka saxanyahay. Waa inaad **saxiixdaa bashqada** si codeyntaada loo xisaabiyo. Haddii aysan kuu suurtoogaleynin inaad saxiixdid iyaddoo sababtu tahay naafanimo soo wac xafiiska doorashada wixii caawimo ah.
6. Soo celi warqadaada codeynta 8:00 PM ee Maalinta Doorashada. Ma baddeli kartid codeyntaada mar haddiiba aad soo celisid.

Sidee ayaan u codeeyaa codeynteeyda?

Hel musharaxa ama cabir jawaabta (HAA ama MAYA) ee dooqaaga ah. Gabi ahaanba madow gadoodka madow ee bidixda dooqaaga ee qada baluuga ama madow. Si aad u codeysid musharaxa ee aanaan ka muuqan warqada codeynta, gabi ahaanba madow gadood ah ee bidixda leenka lagu siiyay ee xafiiska oo ku qor magaca buuxo ee musharaxa leenka. Iska hubi inaad si saxan u calaameysid dooqaaga ee doorasho walba. Warqadaada codeynta rasmiga ah waxay wadaneysaa tartamada lagu daabacay labada dhinac. Ku meeley warqada codeynta bashqada aqoonsiga soo celinta. Waxaad isticmaali kartaa iqtiyaarka darafta qarsoodiga. Shaqaalaha doorashada ayaa illaaliyo qarsoodiga warqadaada doorashada. **Aqri Bayaanka Codeeyaha ee bashqada soo celinta oo ku saxiix leenka saxiixa.** Warqada codeyntaada lama xisaabinayo haddii bashqada soo celinta aanan la saxiixin. Saxiix walba waxaa lagu hubiyaa saxiixa diiwaangelinta ee feelka ku yaalo iyo saxiixyada waa inay islaahaadaan si codeynta loo xisaabiyo.

Haddii aad u codeysay musharaxiinta ka badan kuwa xafiiska ogolyahay ama haddii aad u codeysay **labadaba** Haa **iy**o Maya ee cabirka, waxaa loo yaqaan codeyn badan iyo codeyntaada **looma xisaabinayo** tartankaas.



Haddii aad qalad sameysid ama aad badeshid maskaxdaada adiga oo calaamadaynaya warqada codeyntaada, waxaad ka codsan kartaa baddelka warqada codeynta xafiiska doorashada ama waxaad isbaddelo ku sameyn kartaa warqada doorashada. **a dhig ikhriyaarkaaga mid cad** si markaas shaqaalaha doorashada ee baaraya codeyn walba waxay hubin karaa rabitaankaaga in la fahmay oo si saxan loo tiriyay. Labba tusaale ah sida loo caddeeyo ujeedada codeeyaha waxay ku taalaa hoos.



La xiriir xafiiska Doorashooyinka haddii aad qalad sameysay, warqada codeyntaada waxyeelaa gaadhay ama u luntay sabab walba.

Xiriirka:

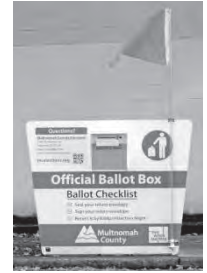
Doorashooyinka Gobolka Multnomah
503-988-3720
Adeega Xiriiriyaha Oregon: 1-800-735-2900
www.mcelections.org | elections@multco.us

Soo Celi Boorashadaada



Waad codayn kartaa warqadda codkaagana sida ugu dhakhsaha badan ayaad u soo celin kartaa markay kusoo gaadho. Boosta ku soo dir warqaddaada codaynta ama ku rid warqaddaada codaynta meel sanduuqa rasmiga ah yaalo. Waxaa hoosta ku qoran liiska goobaha waraaqaha codaynta iyo sanduuqyada

waraaqaha codaynta ee 24-ka saacadood furan oo si ammaan ah u yaala ee gudaha goobaha Laybareeriga Degmada Multnomah, oo la heli karo marka uu laybareerigu furan yahay. La hadal 503-988-5123, ama booqo <http://bit.ly/2d7Vpf3> ama hoosta ka eeg saacadaha laybareerigu shaqeeyo. Waraaqaha codaynta waa in lagu soo xareeyaa xafiiska doorashada ama lagu ridaa sanduuqyada rasmiga ah ee codaynta ee Oregon ugu danbayn 8:00 fiidnimo Maalinta Doorashada. Haddii aad boosta ku dirto warqaddaada codaynta, xaqiiji inaad sidaas yeesho shan maalmood kahor Maalinta Doorashada si loo xaqiijiyo in wakhtigii loogu talagalay ay timaado. **Wakhtiga la soo diray laguma xisaabtamayo.**



Goobaha Sanduuqa Ku ridida 24-Saac

- **Xafiiska Doorashooyinka Gobolka Multnomah** - 1040 SE Morrison St. - Labo goobood ee sanduuqa ku ridida: Sanduuqa 1^{aad} wuxuu ku yaalaa Dhinaca Bari ee **SE 11th Ave.** inta u dhaxeeyso SE Morrison St. & SE Belmont St. sanduuqa 2aad waa Dhinaca Wuuqooyi ee **SE Belmont St.** u dhaxeeyso SE 10th Ave. & SE 11th Ave.
- **A-Boy Supply** - 7365 SW Barbur Blvd.
- **Central Library** - 801 SW 10th Ave. Buugga ku soo celi gadaasha maktabada ee SW 11th Ave.
- **Goodwill Store** - 3134 North Lombard St.
- **McDonalds** - Dhinaca galbeed ee NE 40th Ave. u dhaxeeyso NE Tillamook St. & NE Hancock St. u dhow Hollywood Library.
- **Midland Library** - 805 SE 122nd Ave.
- **Pioneer Courthouse Square** – 700 bologga SW Broadway (waxa uu ku xigaa Starbucks waxaanu ka soo horjeedaa Nordstrom – Goobta Wiishka Aan la Raacin).

Goobaha Ku ridida Rasmiga ah ee Maktabada

- **Albina Library** - 3605 NE 15th Ave.
 - **Capitol Hill Library** - 10723 SW Capitol Highway
 - **Gregory Heights Library** - 7921 NE Sandy Blvd.
 - **Holgate Library** - 7905 SE Holgate Blvd.
 - **Kenton Library** - 8226 N Denver Ave.
 - **North Portland Library** - 512 N Killingsworth St.
 - **Northwest Library** - 2300 NW Thurman St.
 - **St. Johns Library** - 7510 N Charleston Ave.
 - **Sellwood-Moreland Library** - 7860 SE 13th Ave.
 - **Woodstock Library** - 6008 SE 49th Ave.
Isniin – Tallaado : Dhurka – 8pm
Arbaco – Sabti : 10am – 6pm
Axada : Dhurka – 5pm
-
- **Belmont Library** – 1038 SE César E. Chávez Blvd.
 - **Hillside Library** – 1525 SW Sunset Blvd.
 - **Hollywood Library** – 4040 NE Tillamook St.
 - **Midland Library** – 805 SE 122nd Ave.
Isniin, Jimco & Sabti : 10am – 6pm
Tallaado : 10am – 8pm
Arbaco – Qamiis : Dhurka – 8pm
Axada : 10am – 5pm
-
- **Central Library** - 801 SW 10th Ave.
Isniin : 10am – 8pm
Tallaado – Arbaco : Duhurka – 8pm
Qamiis – Sabti : 10am – 6pm
Axada : 10am – 5pm

PORTLAND COMMUNITY COLLEGE

Measure 26-196

BALLOT TITLE

Caption: Bonds to construct job training space, improve classrooms, safety, technology.

Question: Shall Portland Community College construct, expand, modernize facilities; estimated to maintain current tax rate by issuing \$185 million in bonds? If the bonds are approved, they will be payable from taxes on property or property ownership that are not subject to the limits of sections 11 and 11b, Article XI of the Oregon Constitution.

Summary: Projects expected to be financed with bond funds include:

- Construction and improvements to provide students with up-to-date job training spaces;
- Acquisition of modern technology and equipment;
- Improvements to transit and disability access;
- Projects to increase facility lifespan and efficiency through energy efficiency, heating, ventilation, air conditioning, electrical, plumbing, and sustainability improvements;
- Site improvements, demolition, furnishing, equipping, acquiring or purchasing land, bond issuance costs;
- Modernizing the Portland Metropolitan Workforce Training Center;
- Improving the Sylvania Campus Health Technology Building and Health Inter-Professional Training Facility;
- Constructing child care facility on Rock Creek campus;
- Upgrading Cascade Public Safety Building and enhancing safety and security district wide.

If bonds approved, matching state funds of \$8 million would be available to reduce overall cost to taxpayers.

PCC will conduct, issue annual audits to ensure funds used as intended.

Bonds would mature in not to exceed 16 years from issuance. Bond cost estimated to maintain fiscal year 2017 rate of 40 cents per \$1,000 of assessed value. Actual rates may differ and depend on interest rates incurred and assessed value growth.

3. **Invest in meeting safety and security needs, and provide disability access:** PCC goals include investing in safety, security and accessibility, so students are safe and invited to learn.

If approved, bond proceeds are expected to include the following investments:

- Improvements to the Portland Metropolitan Workforce Training Center to provide students with up-to-date job training spaces by rebuilding two outdated buildings and combining programs into one multi-story facility.
- Sylvania campus Health Technology Building renovation: including updates to science and biology labs, nursing education suites and faculty workspace for health-related career fields. Seismic, safety and accessibility needs will also be addressed.
- Development and redesign of spaces used for health inter-professional training.
- Safety, security, longevity, and accessibility upgrades.
- Long range planning to align overall facilities and academic plans. A comprehensive approach is expected to increase coordination and efficiency, reducing long term costs.

What would the bond cost?

Because of expiring bonds, the PCC bond measure is estimated to maintain current tax rates for local homeowners. If voters approve the bond it is expected to maintain the fiscal year 2017 rate of \$0.40 per \$1,000 for 16 years. For a house assessed at \$200,000 the cost is estimated at \$80 per year, or \$6.66 per month. The total principal amount of bonds authorized will not exceed \$185 million. Actual levy rates may differ depending on interest rates incurred and growth in assessed value.

Accountability

Funds from the bond would go directly to the projects that are expected to help achieve the goals outlined above. PCC would emphasize openness and transparency so that the public can track how funds from the bonds are spent.

EXPLANATORY STATEMENT

Portland Community College (PCC) is the largest post-secondary institution in Oregon. It assists 78,000 full and part-time students in Multnomah, Washington, Yamhill, Clackamas and Columbia counties to obtain career training and further their education.

PCC is conducting a district wide examination of its physical infrastructure and academic program needs, to strategically plan for the future. PCC's strategic plan (the "Plan") adopted by the Board focuses on three essential goals which have led to this bond request:

1. **Improve workforce training programs to better align with current and future jobs:** Expanded facilities and updated technology for students will help develop skills for the jobs of tomorrow, with the goal of securing higher paying jobs to meet the growing cost of living in the metro area.
2. **Invest in training for Health and STEAM (Science, Technology, Engineering, Arts and Math) programs:** Students studying these disciplines require access to the latest technology and adequate facilities to enter the workforce career ready.

Submitted by:

Sylvia Kelley
Executive Vice President
Portland Community College

PORTLAND COMMUNITY COLLEGE

Measure 26-196

ARGUMENT IN FAVOR

Over the years, taxpayers in our district have invested in the future of our community by supporting Portland Community College. And here at PCC, we have worked hard to return on those investments.

Portland Community College now is the largest post-secondary institution in Oregon, serving nearly 78,000 full-time and part-time students, online and on campus.

In fact, PCC ranks in the top 20 community colleges in the nation.

PCC also ranks #1 in Oregon in graduates' salaries compared to tuition cost.

This bond renewal will enable PCC to continue to build on that foundation of success.

This bond will help:

- Modernize PCC's job training centers
- Update technology and equipment
- Improve transit access
- Construct a child care facility
- Upgrade safety and security on campuses
- Increase facility lifespan, energy efficiency and sustainability – to decrease costs in the long run

PCC values equity and inclusion for minority businesses, workers, and contractors.

Future PCC bond projects will include clear goals to provide more contracting opportunities to minority, women-owned, and emerging small businesses. Together, we can make investments that do more than build a college – we can help build a stronger, more diverse business community.

We are proud of what our bond program has built, and committed to providing up to date information on the planning and implementation these projects – that information can be found at <https://www.pcc.edu/about/bond/>.

We thank the community for your continued support of one of our area's greatest assets: our community college and the dedicated PCC employees and students who are doing their part to make our community shine.

Please join us in voting YES on M26-196

PCC Board of Directors:
Kali Thorne Ladd, Chair, Zone 2
Denise Frisbee, Zone 1
Michael Sonnleitner, Zone 3
Jim Harper, Zone 4
Valdez Bravo, Zone 5
Mohamed Alyajouri, Zone 6
Deanna Palm, Zone 7

(This information furnished by Hailey Sheldon, PCC Forward)

ARGUMENT IN FAVOR

Business Leaders Urge a YES Vote on M26-196

As business leaders in the metro area, we are well aware of how our region is changing. We are now competing with people from around the world for jobs and for business.

In this changing environment, our goal is to hire employees who will stay and grow with us – employees with strong roots in the community, who have the skills and qualifications required for the jobs of tomorrow.

We find those employees here in the Northwest – with certificates and degrees from local colleges and universities. PCC is the largest of those institutions; in fact it is the largest post-secondary institution in Oregon.

PCC graduates students with the skills and training to fill the positions we need. For example, PCC offers certificates and

degrees in:

- Bioscience
- Building Construction
- Computer Science
- Engineering
- Health Information Management
- Manufacturing
- Medical Professions & Nursing

As business leaders in the metro area, we support PCC's bond renewal because PCC graduates are our employees, our managers, our directors – and for some of us – the heads of our companies and our industries.

YES! PCC is a smart investment in our future.

Cascade Web Development
Dweller
Flotonix
Inici Group
Neil Kelly Design/Build
Pedal Bike Tours
Powell's Books
Software Technology Group
Sunbridge Solar
The Tygh Valley Group
Walsh Construction Co.

(This information furnished by Hailey Sheldon, PCC Forward)

ARGUMENT IN FAVOR

As health care professionals in the metro area, we support PCC's bond renewal measure because it will help to strengthen an industry we all rely upon, and lift up our families in the process.

The health care industry is expected to lead job growth in Oregon over the next decade; it is one of the fastest growing industries in the state.

Oregon's education system is working to keep pace with this growth – graduating qualified practitioners and incorporating new competencies into traditional training programs.

PCC offers degrees and certificates in some of the most in-demand health care fields, including:

- Dental Hygiene
- Emergency Medical Technician
- Gerontology
- Medical Imaging
- Medical Laboratory Technology
- Nursing

The 2017 bond renewal will go to expanding and modernizing PCC's health care training programs. The facilities and equipment used by PCC's health care certificate and degree programs (medical, nursing and dental) are essential to those programs.

By continuing to improve upon the success of these programs, PCC is not only investing in an industry that is essential to our economy – it is also providing a pathway for individuals in our area to a stable and well-paying career.

Please join us in voting YES for PCC.

CareOregon
Oregon Health Care Association
Oregon Nurses Association
Tuahly Healthcare

(This information furnished by Hailey Sheldon, PCC Forward)

PORTLAND COMMUNITY COLLEGE

Measure 26-196

ARGUMENT IN FAVOR

We're voting YES for PCC

Community groups, organizations and non-profits support this measure because this bond renewal isn't just about building a community college – it's about building a community.

Portland Community College is our partner.

Access, student success, quality education, equity, inclusion, sustainability and resilience – these are core principles we share with PCC and its vision for the future of our community.

PCC supports underserved and underrepresented communities in the metro area by providing a less expensive, more accessible path to a college degree.

PCC teaches the skills necessary to secure better paying jobs – strengthening families and communities as a result.

PCC is actively working to increase equity and inclusion by recruiting diverse faculty, administrators and staff.

PCC is doing its part to combat climate change. The college is a nationally recognized leader in the higher education community for sustainability and climate action.

PCC supports metro area youth by offering advanced courses for high schoolers, GED programs, and an affordable pathway to a four-year degree.

PCC supports people who are unemployed and underemployed, by offering training courses for individuals re-entering the workforce or changing careers.

PCC supports students with jobs, children at home, or other commitments, by offering online classes and flexible schedules.

PCC partners with us – our schools, our non-profits, community groups and organizations – to provide opportunities and services we have all come to count on.

We support PCC because PCC supports us.

Join us and vote YES for on M26-196

Adelante Mujeres
Centro Cultural de Washington County
Hacienda CDC
Latino Network
Native American Youth & Family Center
Oregon League of Conservation Voters
Portland Council PTA
Portland NAACP
The Portland Trail Blazers

(This information furnished by Hailey Sheldon, PCC Forward)

ARGUMENT IN FAVOR

Our economic development organizations – chambers of commerce, business associations, and others – support the PCC bond because it is an investment in the future of our area.

PCC Helps Our Economy Grow

PCC's job training programs supply students with the skills businesses in our area demand – so that they can compete in the region's major industries. Without a skilled workforce, metro area businesses are unable to keep pace, and are forced to recruit from elsewhere.

Local employers face challenges finding the highly skilled employees they need to grow their business and compete successfully. This bond renewal will increase access to critical career and technical education programs that prepare students for good-paying jobs and support employers who are ready to expand.

PCC is a Safe Investment

Portland Community College has a proven track record of offering courses that fit the needs of our local economy – and when the economic landscape changes, PCC changes with it. PCC has demonstrated success in graduating students who are qualified for – and hired for – the jobs that fuel our local economy.

We support this bond renewal – and PCC – because PCC supports our economy and helps keep our community strong.

Join business and economic development leaders in voting YES on M26-196.

Banks Chamber of Commerce
Beaverton Area Chamber of Commerce
Hillsboro Chamber of Commerce
Lake Oswego Chamber of Commerce
Main Street Alliance of Oregon
Tigard Chamber of Commerce
Tualatin Chamber of Commerce
Westside Economic Alliance
Wilsonville Area Chamber of Commerce

(This information furnished by Hailey Sheldon, PCC Forward)

ARGUMENT IN FAVOR

ELECTED LEADERS URGE A YES VOTE ON 26-196

Portland Community College provides access to affordable education for ALL

Now, more than ever, access to affordable education is critical to the future of our community and the people who want to make a home here for themselves and their family. Oregon's economic recovery is not reaching everyone equally. Too many low-income and communities of color are being left behind. Affordable, accessible education is the key to unlocking opportunity for all. As the state's largest college, PCC holds the key to a successful future for individuals and communities across the region.

We urge you to vote YES!

PCC is a vital part of our economy

Demand for a skilled and educated workforce is expanding among the region's top employers. Good paying jobs are growing increasingly complex and require workers with the technical training necessary to adapt. PCC is focused on meeting the needs of Portland metro's workforce. Funds from the bond will go to improving workforce training programs and prepare us all for a better future.

Smart investment for today and tomorrow

This bond is simply a renewal of an existing rate so your YES vote will not increase your current tax rate but will allow PCC to leverage \$8 million in matching funds from the State of Oregon. Taxpayer oversight includes annual audits and project transparency through a public information portal to be found on the PCC website.

Federal

U.S. Congressman Earl Blumenauer
U.S. Congresswoman Suzanne Bonamici

State Senators

Michael Dembrow
Richard Devlin
Lew Frederick
Rod Monroe
Margaret Carter

State Representatives

Margaret Doherty
Chris Gorsek
Diego Hernandez
Alissa Keny-Guyer
Tina Kotek

PORTLAND COMMUNITY COLLEGE

Measure 26-196

Rob Nosse
Barbara Smith Warner
Jennifer Williamson
Richard Vial

Local

Hillsboro Mayor Steve Callaway
Tigard Mayor John Cook
Tualatin Mayor Lou Ogden
Multnomah County Chair Deborah Kafoury
Multnomah County Commissioner Sharon Meieran
Multnomah County Commissioner Jessica Vega Pederson
Portland City Commissioner Dan Saltzman
Lake Oswego City Councilor Theresa Kohlhoff

(This information furnished by Hailey Sheldon, PCC Forward)

ARGUMENT IN FAVOR

As PCC faculty, we help to train and educate a wide variety of students throughout the region. Students representing every age group, income level and cultural background - seeking vocational training, technical degrees, or a jump start to a 4-year degree.

These students require the most up-to-date technology and classrooms in order to prepare for their future careers. When our students graduate, they go on to compete with students from across the nation – and in order to help them secure the jobs they've trained for, PCC needs up-to-date tools and facilities.

If passed, this bond will help:

- Modernize the Portland Metropolitan Workforce Training Center
- Update the Sylvania Campus Health Technology Building and Health Inter-Professional Training Facility – including updating science and biology labs, nursing education suites, and workspace for other health-related career fields
- Improve classrooms
- Acquire modern technology and equipment

As commutes get longer and rents get higher, students are turning more to local community colleges and online courses. To meet that demand, PCC must continue providing its students with up-to-date training and technological tools. Join us in voting YES on this bond so we can continue to do that.

Please vote YES for PCC

Andrew Butz, Sociology
April Ann Fong, Biology and Environmental Sciences
Bryan Hull, Composition/Literature
Doug Byrd, Political Science
Fred Miller, Psychology
Jane Zunkel, Composition/Literature
Jim Parks, Criminal Justice
Mark Easby, Composition/Literature
Phil Thurber, Mathematics
Porter Raper, Composition/Literature
Sylvia Gray, History
Teri Mills, Nursing
Tom Scales, Political Science
Trina Hing, English for Speakers of Other Languages (ESOL)
Wayne Hooke, Psychology

(This information furnished by Hailey Sheldon, PCC)

ARGUMENT IN FAVOR

Dear Voter:

As a first-generation college student, I face pressures and financial hardships many students don't. I was destined to get lost in the system. But instead I prevailed.

I enrolled at PCC to begin my journey toward a better life. While working three jobs to pay for tuition and provide for

myself, I made a promise that I would always put my best self forward and advocate for others so that they may have the same opportunities. While taking classes, I worked for PCC's Career Exploration Center, Women's Resource Center, and soon after became the student body President at PCC Rock Creek.

Now, as my time at PCC is reaching its close, it is important that I pass the torch and help open doors that I did not have access to. As the community changes, PCC must continue to change with it.

I'm supporting PCC's bond renewal measure because it will help change the lives of students all over Portland. The affordability, resources and opportunities that flow from Portland Community College enrich our community and workforce.

Voting YES will make an extraordinary difference in the lives of thousands of people and families throughout the five counties that PCC serves – people just like me.

Ivan Hernandez, PCC Student

(This information furnished by Hailey Sheldon, PCC Forward)

ARGUMENT IN FAVOR

When I signed up for my very first college class at the PCC campus in my neighborhood, I had no way of knowing I was starting an education journey that would eventually take me to the Harvard Kennedy School. I would not have thought that possible considering my financial means at the time. I didn't know what courses I wanted to take. All I knew then was that I had a hunger to learn and I needed to start somewhere that felt accessible and welcoming.

My very first class set the tone and gave me the confidence I needed to continue pushing forward. I had signed up for a math class and was a little worried because I didn't think I was good at math. My instructor changed all of that for me. Not only did I learn that I was good at math, I learned that I could excel in college.

Over the next few years I was encouraged, supported, and challenged to push myself by faculty, staff, and administrators who prioritized student success. At PCC I engaged with some of the smartest, most thoughtful and supportive instructors I've had in any institution of learning.

As our community continues to grow, and more people feel the pressure of an economy that isn't lifting everyone up, PCC holds the promise of a brighter future. It's not just the general affordability of PCC that makes the difference, but the rich and supportive learning environment that comes with it.

I support the PCC bond because I know PCC supports our community. The investment we make today to modernize classrooms and improve training programs will come back to us in the form of graduates who will have the skills and commitment to make our community stronger.

Roberto Jiménez
PCC Diamond Alumni 2012
PCC, 1994- 1997
University of Oregon, 1995-1998
Harvard Kennedy School, 2010-2011

(This information furnished by Hailey Sheldon, PCC Forward)

PORTLAND COMMUNITY COLLEGE

Measure 26-196

ARGUMENT IN OPPOSITION

PCC's ILLEGAL-ALIEN SANCTUARY POLICY INSULTS LAW-ABIDING TAXPAYERS.

HOLD PCC ACCOUNTABLE. VOTE NO ON THE PCC BOND.

Last year, PCC's board of directors declared the college a sanctuary for illegal aliens. The policy's aim: **to shield illegal-alien students from detection by U.S. immigration authorities.** To this end, PCC will refuse to provide those authorities information on any illegal-alien student "unless legally compelled to do so" (pcc.edu, "Sanctuary College," 12-20-16).

PCC's illegal-alien sanctuary policy violates federal law: 8 U.S. Code 1324 criminalizes all who, "knowing ... that an alien has come to, entered, or remains in the United States in violation of law, conceals, harbors, or shields" that alien from detection.

PCC's illegal-alien sanctuary policy endangers public safety. What if, in a swiftly-developing case, law-enforcement authorities need to immediately ascertain the whereabouts of a criminal alien enrolled at PCC -- but lack the time to seek a court warrant ordering the college to release his class schedule or address? PCC's sanctuary policy would give that criminal alien more time to elude capture -- and, possibly, to commit another crime that would have been deterred had PCC cooperated with law-enforcement authorities in the first place.

PCC's illegal-alien sanctuary policy flouts the immigration law Americans have established through their elected representatives. It threatens public safety. And it sets a destructive example for students, in whom PCC should strive to imbue respect -- not contempt -- for law.

PCC, like all American institutions, has a responsibility to the nation of which it is part. By undermining the rule of law through its illegal-alien sanctuary policy, **PCC savages that responsibility.**

Send PCC a message:

If you flout U.S. immigration law,

**YOU DON'T DESERVE AND WON'T GET MORE OF OUR
TAX MONEY.**

STAND FOR THE RULE OF LAW.

**STAND AGAINST PCC's ILLEGAL-ALIEN SANCTUARY
POLICY.**

VOTE NO ON THE PCC BOND.

(This information furnished by Richard F. LaMountain.)

ARGUMENT IN OPPOSITION

"RACISM IS BASED ON THE CONCEPT OF WHITENESS."

-- Paul Kivel, *Utne Reader*, April 2013

IS THIS WHAT YOU BELIEVE?

**WELL, PCC's "WHITENESS HISTORY MONTH"
WORKED TO INSTILL THIS IDEA IN PCC STUDENTS --
WITH YOUR TAX MONEY.**

In April 2016, PCC sponsored a "Whiteness History Month." The crux of the "whiteness" ideology, as summarized by University of Illinois professor Mikhail Lyubansky, is that "U.S. society is characterized by a socially-created racial hierarchy that values white[s] above all others" (psychologytoday.com, 12-14-11).

This is nonsense. Thanks to America's European-derived culture, U.S. citizens of all races benefit from a society whose very purpose is the "equity and inclusion" PCC identifies as its overarching goals (catalog.pcc.edu, "Mission Statement").

From that European-derived culture sprang constitutionally-based representative government, the rule of law, and freedom of speech. From it sprang institutionalized recognition of every person's worth, and enshrinement of the individual initiative that has driven and sustained our First-World economy and standard of living. **Today, American society provides more freedom, opportunity and prosperity to more people of more races than any society in the world.**

But propaganda like that conveyed in PCC's "Whiteness History Month" denigrates U.S. history and society, works to instill shame and guilt in white Americans, and aims to foster preferential expectations among Americans of color. **Is this what we send PCC our hard-earned tax dollars to do?**

Too often, America's colleges are able to foist leftist pseudo-theory on their students with impunity. **Not so PCC, which must appeal directly to you, the local taxpayer, for a large portion of its funding.**

Send PCC a message:

**If you seek to indoctrinate our youths in racially-divisive
ideologies,**

**If you seek to cultivate resentment of our great nation,
YOU WON'T GET MORE OF OUR TAX MONEY.**

VOTE NO ON THE PCC BOND.

(This information furnished by Richard F. LaMountain.)

ALTO PARK WATER DISTRICT

Measure 26-195

BALLOT TITLE

Caption: Five Year Local Option Tax

Question: Shall the District impose a \$.60 per \$1,000 of assessed value for operating expenses beginning in 2018-2019? This measure may cause property taxes to increase more than three percent.

Summary: The taxes will be used to meet operating expenses of the Alto Park Water District and to maintain a contingency fund for future operating expenses. The primary operating expense is a contract for fire protection services with the Lake Oswego Fire Department. The tax is estimated to raise the following amounts: \$16,583 in 2018-2019; \$17,081 in 2019-2020; \$17,593 in 2020-2021; \$18,121 in 2021-2022; and \$18,655 in 2022-2023. The estimated tax cost for this measure is an ESTIMATE ONLY based on the best information available from the county assessor at the time of the estimate.

EXPLANATORY STATEMENT

The taxes will be used to meet operating expenses of the Alto Park Water District and to maintain a contingency fund for future operating expenses. The primary operating expense is a contract for fire protection services with the Lake Oswego Fire Department. The tax is estimated to raise the following amounts: \$16,583 in 2018-2019; \$17,081 in 2019-2020; \$17,593 in 2020-2021; \$18,121 in 2021-2022; and \$18,655 in 2022-2023. The estimated tax cost for this measure is an ESTIMATE ONLY based on the best information available from the county assessor at the time of the estimate.

Submitted by:

Michelle Freed
Alto Park Water District



NEED ASSISTANCE IN VOTING?

Please contact
Multnomah County Elections

Phone
503-988-3720

Oregon Relay Service
1-800-735-2900

E-mail
elections@multco.us

NO ARGUMENTS IN FAVOR OR OPPOSITION TO THIS MEASURE WERE FILED.

HILLSBORO SCHOOL DISTRICT

Measure 34-278

BALLOT TITLE

Caption: Bonds to Improve Schools and Classrooms, Address Safety, Repairs, Overcrowding

Question: Shall Hillsboro School District improve schools, safety, security, and technology; issue \$408 million in bonds; estimated to maintain tax rate? If the bonds are approved, they will be payable from taxes on property or property ownership that are not subject to the limits of sections 11 and 11b, Article XI of the Oregon Constitution.

Summary: Bonds would fund projects to upgrade safety, repair aging schools, improve learning environments, relieve school crowding, and plan for growth.

The District was awarded at least \$6 million in state matching funds if bonds approved.

Independent audits and citizen oversight required.

Bonds expected to fund:

Safety Improvements

- Seismic, safety, security upgrades.

Repairs, Replacements, Address Overcrowding

- Mechanical/electrical/plumbing/hardscape/roofing upgrades;
- Replace Brookwood Elementary;
- Improvements and expansion to existing schools;
- New elementary gymnasiums;
- Drop-off safety improvements;
- Playground, athletic field and other improvements.

Plan for Future Growth

- Two elementary schools;
- Transportation/Maintenance facility.

Learning Environments

- Classroom and technology upgrades;
- Job training infrastructure, equipment.

Furnishing, equipping and issuance costs.

State matching and remaining funds may fund:

- Purchase land for additional school capacity;
- Replace additional hardscapes, portables;
- Replace windows;
- Improve/replace tennis courts.

Bonds would mature in 21 years or less from issuance. The estimated tax rate is projected to not increase over current levels of \$2.24 per \$1,000 of assessed property value. Actual levy rate may differ due to changes in interest rates and/or assessed value.

The District's last capital construction bond ask of \$169 million was passed by voters in November 2006. This bond allowed the District to build and furnish new schools, add classroom space, expand, upgrade and renovate existing schools and facilities, acquire land for facilities and pay bond costs. All projects undertaken with the 2006 bond were completed on-time and on- or under-budget.

USE OF FUNDS AND OVERSIGHT

If the bond is approved, the following approximate amounts are expected to be spent over the next five years (school years 2018-19 through 2022-23): \$68.3 million in safety and seismic upgrades; \$30.2 million in technology infrastructure and devices; \$178.5 million in new capacity; \$24 million in career-technical education expansion and flexible classroom furniture; \$89.7 million in current infrastructure improvements; and \$17.6 million in required bond issuance and project oversight costs.

In addition, if the bond measure is approved, the District would be awarded at least \$6 million in state matching funds, which would allow for the completion of additional projects such as window and portable replacements, tennis court and other hardscape improvements, and land purchases.

The District would also invite patrons to participate on a Bond Oversight Committee, similar to the one formed after the passage of the 2006 construction bond.

COST OF BOND

The bond would be repaid by property owners over a period of twenty-one years. Due to the repayment of previously outstanding bonds, this bond is estimated to maintain the current overall tax rate of \$2.24/\$1,000 of assessed value. The actual levy rate will change due to fluctuations in Total Assessed Value, Assessed Value Growth Percentage, and/or the Tax Collection Rate in the District, as well as the interest rate at the time the bonds are sold.

Submitted by:

Adam D Stewart
Hillsboro School District 1J

EXPLANATORY STATEMENT

BACKGROUND

Hillsboro School District serves more than 20,000 students in 36 schools; it is the fourth largest school district in Oregon.

Because of significant growth taking place within District boundaries and the aging of its existing buildings, the District needs to build new schools and expand current schools to accommodate additional students, as well as complete necessary safety, seismic, and infrastructure improvements to existing structures. It also needs to invest in technology, career-technical education, and learning materials that will help students succeed now and in the future. The District plans to complete needed projects with proceeds from this bond measure, and estimates that the current tax rate will not increase as a result. If the bond does not pass, these projects could not be completed.

NO ARGUMENTS IN FAVOR OR OPPOSITION TO THIS MEASURE WERE FILED.



Do you need help voting in your native language? Interpretation services are available at no cost to you.

¿Necesita ayuda para votar en su idioma materno? Hay servicios de interpretación disponibles sin costo.

Quý vị có cần sự trợ giúp bỏ phiếu bằng ngôn ngữ của mình hay không? Có sẵn các dịch vụ thông dịch được cung cấp miễn phí cho quý vị.

您在投票时是否需要母语帮助？可以免费为您提供口译服务。

Вам нужна помощь при голосовании на вашем родном языке? Услуги устного языкового перевода предоставляются вам бесплатно.

Ma u baahantahay caawinta aad ku codeyneysid luuqaddaada hooyo? Adeegyada turjubaanka waxaa laguugu helayaa lacag la'aan.

تامدخ دجوت؟ أم لا! كاتغلب تيوصنلا ةدعاسم ىلإ ةجادي فتنا ل ه
أناجم لكل ةحاتم تيروف ةمجرت

모국어로 투표 관련 안내를 받고자 하시는 경우, 무료 통역 서비스를 받으실 수 있습니다.

Kailangan mo ba ng tulong sa pagboto gamit ang sarili mong wika? May makukuha kang libreng mga serbisyo sa pagsasalin.

貴方の母国語で投票するにあたって、手助けが必要ですか？通訳サービスは無料で利用できます。

Multnomah County Elections
503-988-3720 | elections@multco.us



Normal Office Hours

Monday – Friday
8 AM – 5 PM

Extended Election Office Hours *

Sat. Nov. 4 - 10 AM – 2 PM

Mon. Nov. 6 - 8 AM – 6 PM

Always open on Election Day

Tues. Nov. 7 - 7 AM – 8 PM

* These extended hours apply only to the Multnomah County Elections office.



Available beginning at 8:00 PM,
November 7, 2017.

www.mcelections.org

Final certified results available by
November 27, 2017.

MULTNOMAH COUNTY ELECTIONS
1040 SE Morrison St.
Portland Or. 97214-2495



NONPROFIT
ORGANIZATION
CAR-RT SORT
U.S. Postage
PAID
Portland, OR
Permit No. 670

Voters' Pamphlet



**Multnomah County Elections
November 7, 2017
Special Election**