

## Pre-Construction Condition Supplemental Information

This memo documents pre-construction conditions at the Portland Water Bureau's Bull Run Filtration project sites.

### Filtration Facility Site



**Figure 1.** Overview map showing locations where Filtration Facility & vicinity photos were taken.



**FF1** - 12/18/20 East side of Filtration Site looking West at 45.461833, -122.290556





**FF2** - 4/21/21 – Filtration Site facing south. (45.465017, -122.2986)



**FF3** – 8/28/2020 – Survey Crew at north Area of Filtration Facility Site at approximately 45.466126541392995, -122.29787456331964





**FF4** – 4/27/21 West side of Filtration Facility facing Northeast at 45.463017, -122.299317



**FF5** – 4/27/21 West side of Filtration Facility facing Southeast at 45.463017, -122.299317





**FF6** – April 2020 – Northeast side of Filtration Site facing Southwest. (45.46503227912494, -122.29528612691244)



**FF7** – 7/8/21 – Filtration Site at Pleasant Home Water District (PHWD) water tanks.  
(45.46191015922553, -122.29552396329169)





**FF8** – 4/11/23 Southwest corner of the Filtration Site facing east. (45.461517, -122.298775)



**FF9** – 4/11/23 – South end of Filtration Site facing South. (45.462186, -122.296967)





**FF10** – 2/21/23 Northeast edge of the Filtration Site facing southwest. (45.464958, -122.294922)





**FF11** - 12/18/2020 R&H Nursery Stormwater (45.465056, -122.302556)





**FF12** – March 2020 – Southwest corner of Filtration Site looking Northwest (Approximately at 45.4616517795287, -122.29891509810511)



**FF13** – 12/18/2020 – Southwest corner of Filtration Site looking west towards the SEC-wr overlay zone. Approximately Located at 45.46153681457796, -122.2990759518911)





**FF14** -12/18/2020 - Southwest corner of the Filtration Site looking west towards the SEC-wr overlay zone. (Approximately Located at 45.46159701515252, -122.29872458252862)



**Figure 2.** 7/18/2017 Google Earth aerial image of the Southwest corner of the Filtration Facility Site. The dashed white line shows the approximate location of the SEC-wr Boundary.





**Figure 3.** 9/3/2018 Google Earth aerial image of the Southwest corner of the Filtration Facility Site. The dashed white line shows the approximate location of the SEC-wr Boundary.



**Figure 4.** 5/8/2019 Google Earth aerial image of the Southwest corner of the Filtration Facility Site. The dashed white line shows the approximate location of the SEC-wr Boundary.





**Figure 5.** 8/13/2020 Google Earth aerial image of the Southwest corner of the Filtration Facility Site. The dashed white line shows the approximate location of the SEC-wr Boundary.



**Figure 6.** 7/24/2021 Google Earth aerial image of the Southwest corner of the Filtration Facility Site. The dashed white line shows the approximate location of the SEC-wr Boundary.



## Raw Water Pipeline Route



**Figure 7.** Overview map showing location of pre-construction photos near the raw water pipeline alignment. (SE Lusted Rd approximately 1/2-mile Northwest of intersection with SE Dodge Park Blvd.)





**RWP1** – 2/2/24 – Pond near Raw Water Pipeline alignment facing east. (45.461497, -122.284561)





**RWP2** – 2/2/24 – Southern edge of Raw Water Pipeline alignment, facing east. (45.461394, -122.285744)



## Finished Water Pipeline Route



**Figure 8.** Overview map showing locations along the finished water pipeline route where pre-construction photos were taken. (SE Dodge Park Blvd between SE Altman Rd. and SE Cottrell Rd.)





**FWP1** – 3/19/24 – Finished Water Pipeline route along Dodge Park Blvd, ½ mile east of SE Altman Rd, facing east. (45.468639, -122.316131)





**FWP2** – 3/19/24 – Finished Water Pipeline route along SE Dodge Park Blvd, 0.4 miles west of SE Cottrell Rd, facing east. (45.468544, -122.314278)





**FWP3** – 3/19/24 – Finished Water Pipeline route along SE Dodge Park Blvd, approximately 450 feet west of SE Cottrell Rd, facing east. (45.468219, -122.307625)

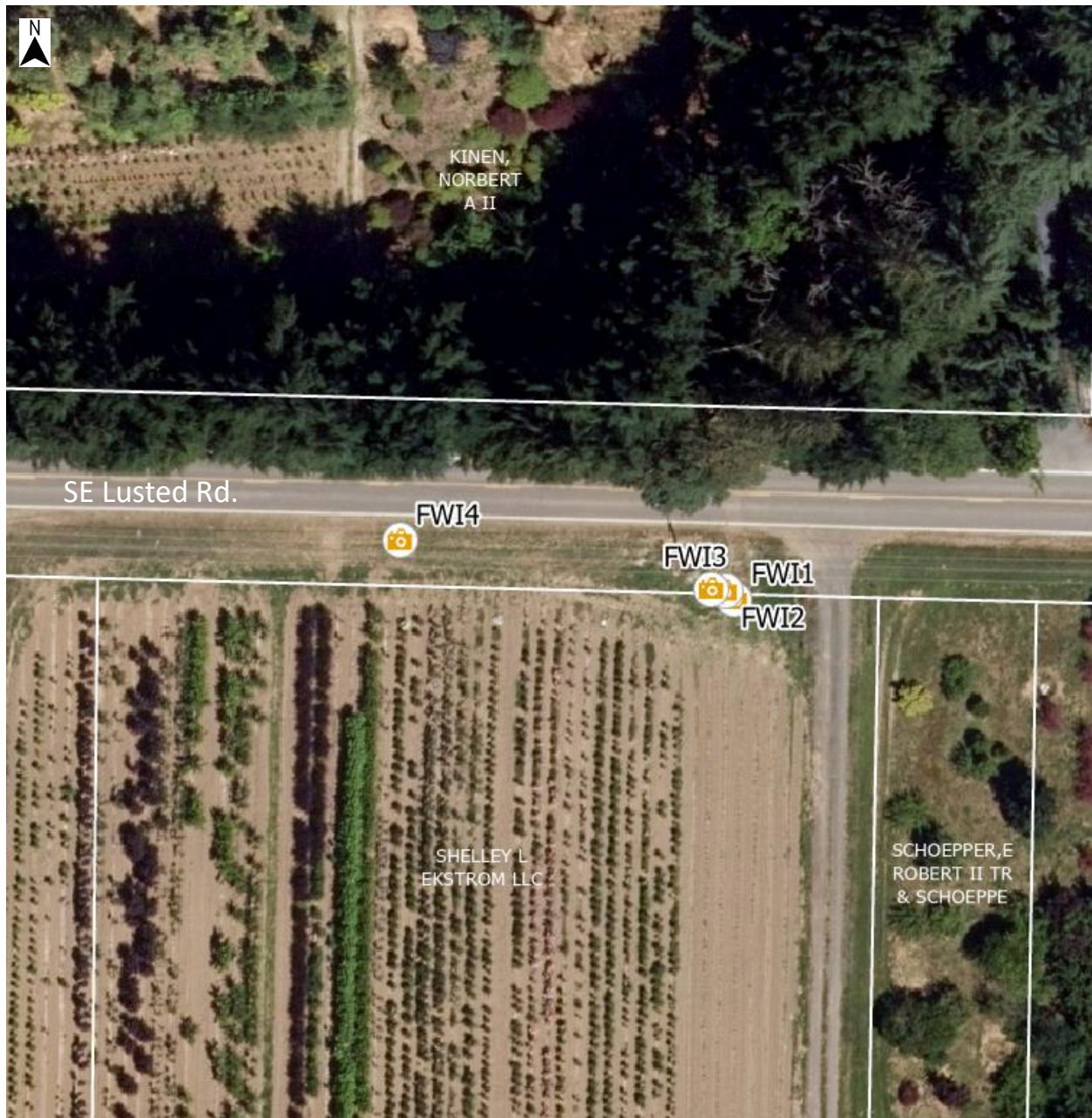




**FWP4** – 3/19/24 – Finished Water Pipeline route along SE Dodge Park Blvd, approximately 300 feet west of SE Cottrell Rd, facing east. (45.468189, -122.307097)



## Finished Water Intertie Site



**Figure 9.** Overview map showing locations where Finished Water Intertie pre-construction photos were taken. (SE Lusted Rd approximately 1/3<sup>rd</sup> mile East of SE Altman Rd.)





**FWI1** – 2/15/23 - Finished Water Intertie Site south of Lusted Rd facing West.(45.47589005480063, -122.31898218144954)





**FWI2** – 2/15/23 - Finished Water Intertie south of Lusted Rd facing West (45.47589710776257, -122.31899492194181)





**FWI3** – 2/15/23 - Finished Water Intertie south of Lusted Rd facing West.(45.47589851835486, -122.31901235629965)





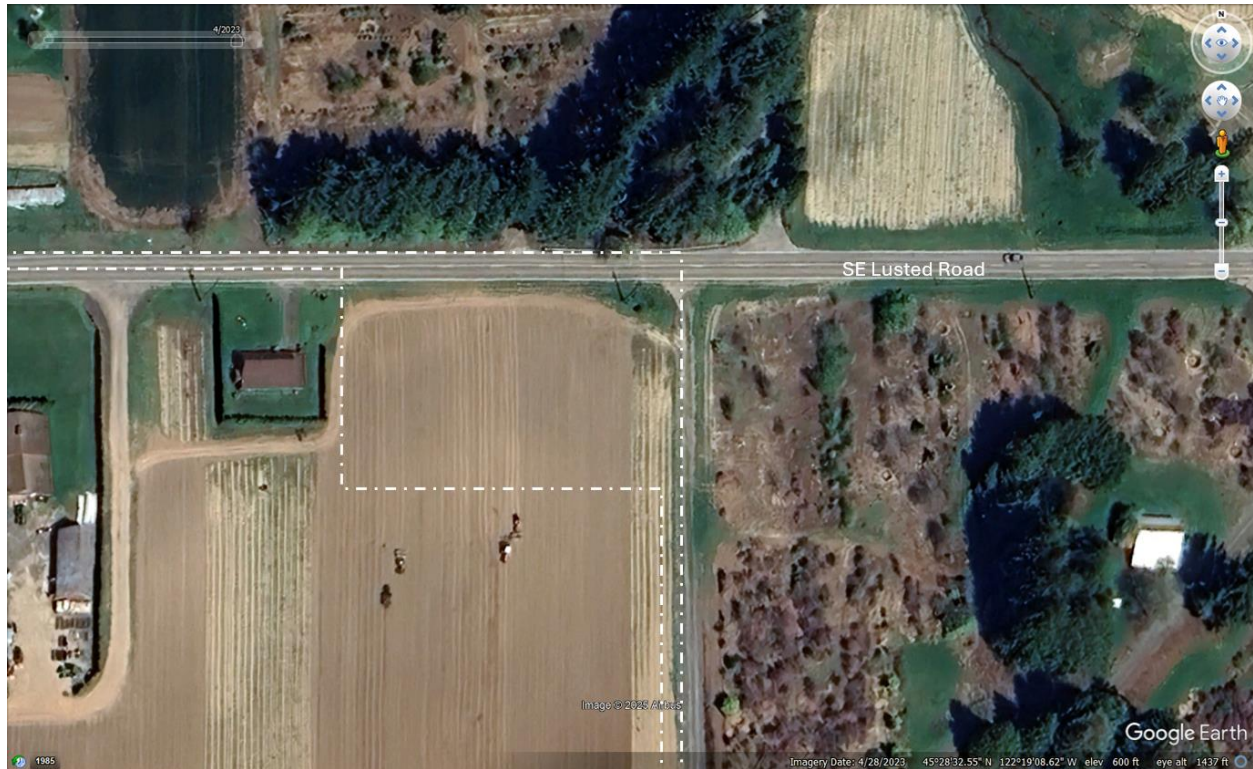
**FWI4** – 2/15/23 - Finished Water Intertie south of Lusted Rd facing East. (45.47593519374178, -122.31940261769402)





**Figure 10.** – 7/24/2021 Google Earth aerial image of SE Lusted Rd area approximately 1/3<sup>rd</sup> mile East of SE Altman Rd. The dashed white line shows the approximate location of the Finished Water Intertie site.





**Figure 11.** – 4/28/2023 Google Earth aerial image of SE Lusted Rd area approximately 1/3<sup>rd</sup> mile East of SE Altman Rd. The dashed white line shows the approximate location of the Finished Water Intertie site.