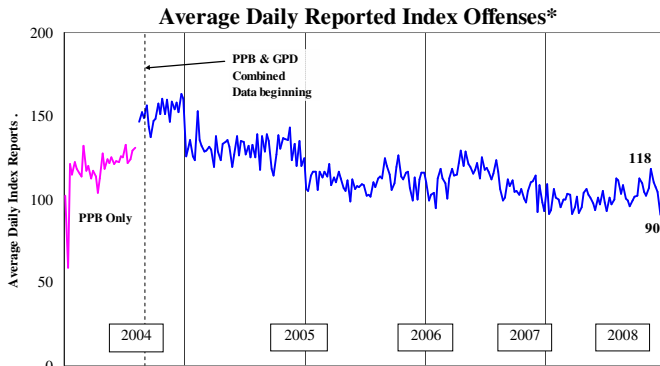


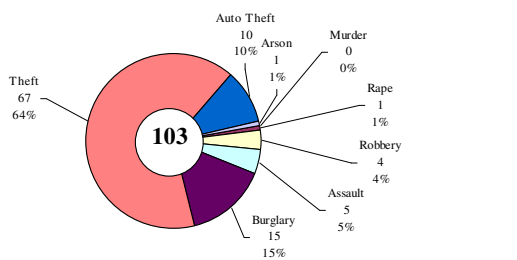
SAFETY PRIORITY BRIEF: NOVEMBER 2008

Multnomah County: Reported Index Offenses



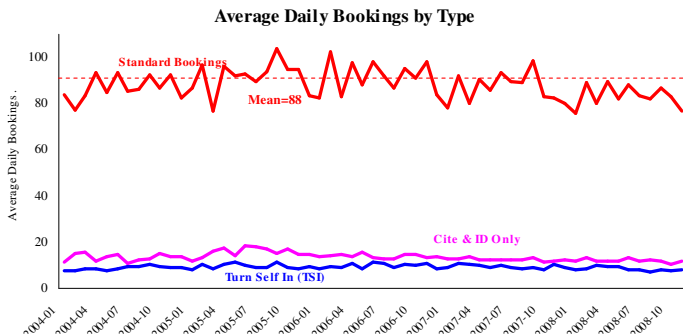
*The graph reflects the combined weekly index offenses data from Portland Police Bureau (PPB) and Gresham Police Dept (GPD), beginning 8/2004 (line in blue). According to LEDS (2005) data PPB and GPD account for 95% of all offenses county-wide. Index offenses account for about half of all reported offenses.

Average Daily Reported Index Offenses*



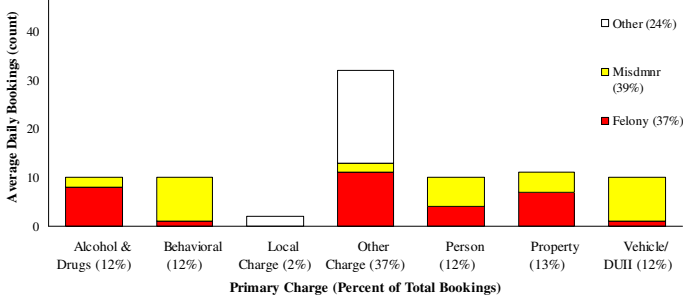
*Portland and Gresham, combined 4-week moving average for the week ending 11-29-08.

Sheriff: Bookings



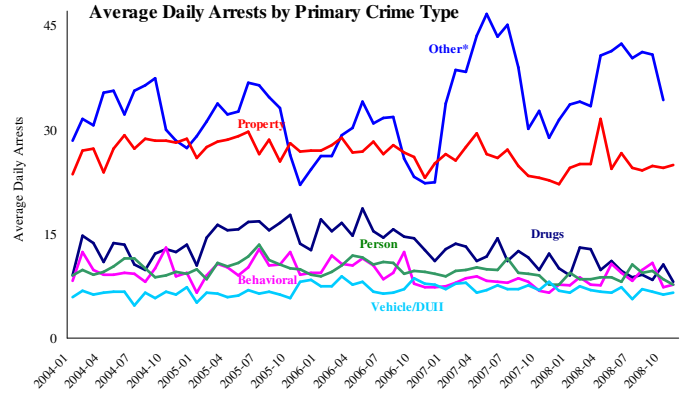
*In-transit bookst are not reported herein and account for ~4% of all bookings. November's average length of stay (ALS) per booking was 18.52 days.

Average Daily Bookings by Severity*: November (n=87)



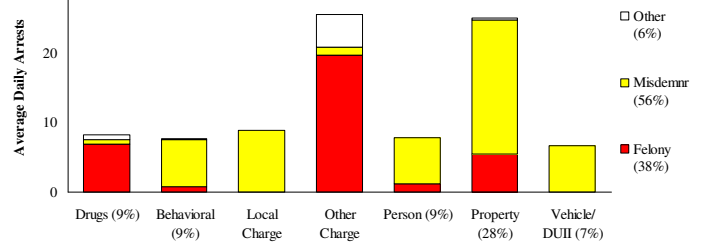
*Excludes Cite & ID. Total of 2597 bookings (86.6/day) through 11/30/2008. Corrections Health reported 489 psych-alerts (16.3/day) for the entire month of November.

Multnomah County: Portland Arrests



*Other largely reflects fugitive/warrant charges and local ordinances (DFZ/PFZ). PPB data only, downloaded 12/19/2008.

Average Daily Arrests*: November (n=89)



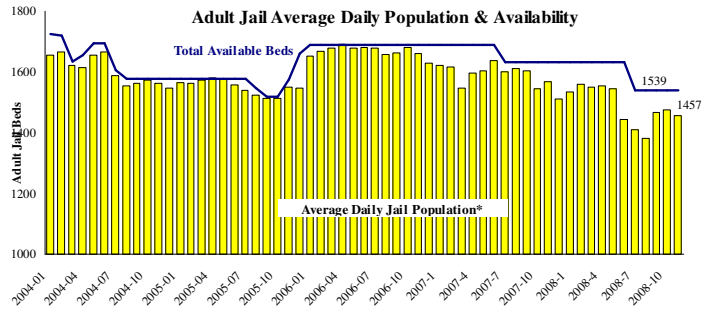
Local charges include drug- and prostitution-free zone violations.

Primary Charge (Percent of Total Arrests)

*There were 2678 arrests in November.

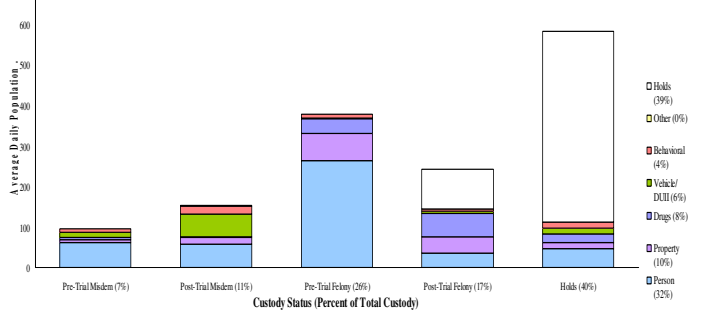
From now on, warrants previously categorized as 'other' will be listed under felony arrests.

Sheriff: Custody- Adult Jail Beds



*Excludes in-transit custody classifications. The MCSO reported 0 matrix releases for November 2008.

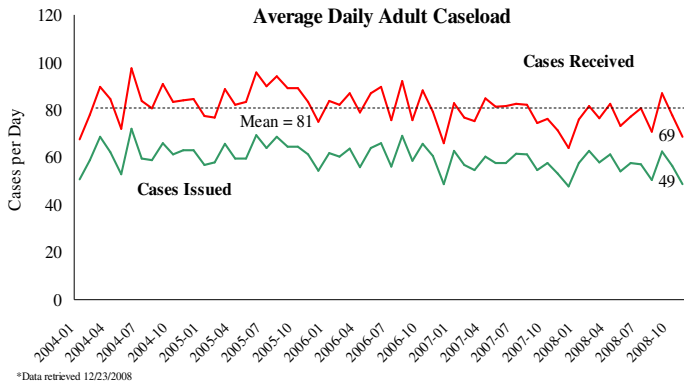
Average Daily Bed Use: November (n=1457)



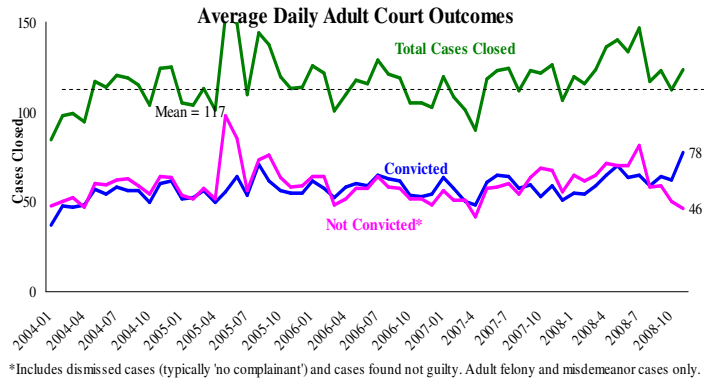
Average Daily Jail System Capacity=1539. Average Daily Population (ADP)=1457; there were 82 available beds on any given day.

Notes: Average Daily Arrests decreased by seven arrests per day. Since October, arrests in Gresham for Larceny Auto increased 40% and Robbery decreased 45%. In Portland, Larceny Other decreased 23% and Drug Arrests decreased 25%. Average Length of Stay (ALS) for November was 18.5 days and has continued to rise since June. However, the number of jail beds occupied decreased for the first time since September, to 1,457. Sheriff Standard Bookings have decreased 12% since September; the biggest decrease was in Felony Bookings.

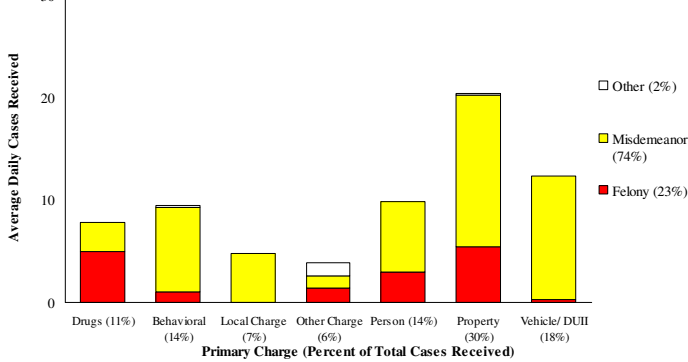
District Attorney: Adult Caseload



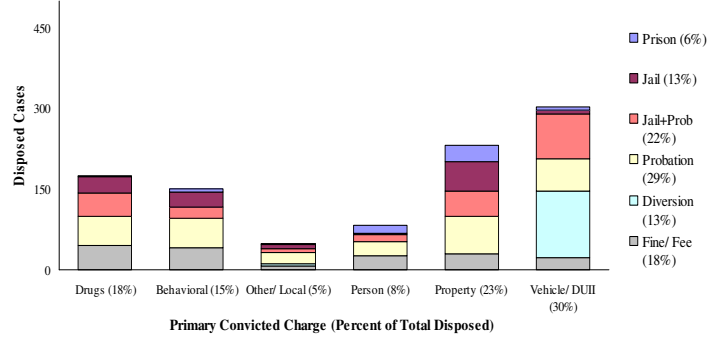
Court Processes: Sentencing Outcomes



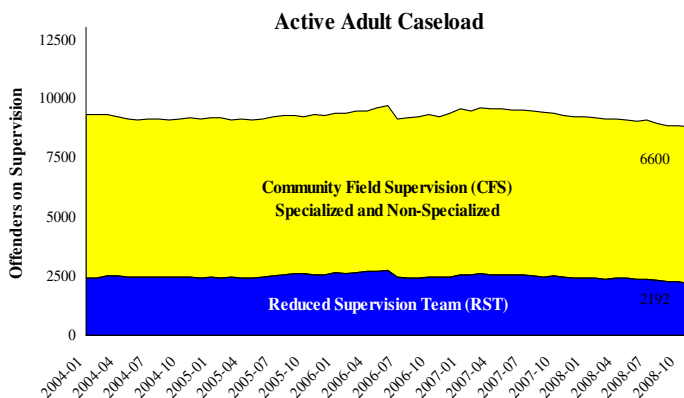
Average Daily Received Cases*: November (n=69)



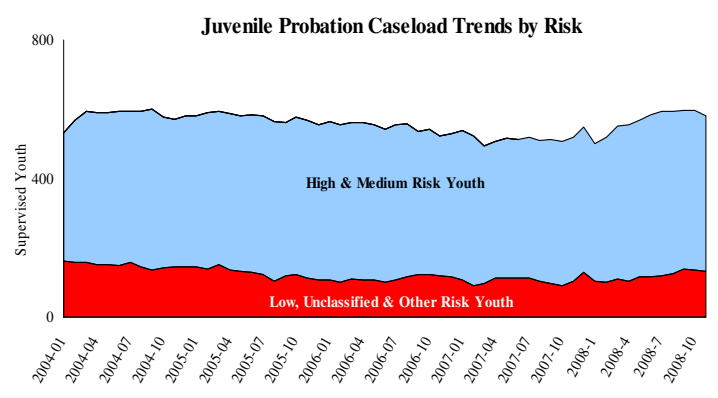
Disposition Type by Primary Conviction*: November 2008



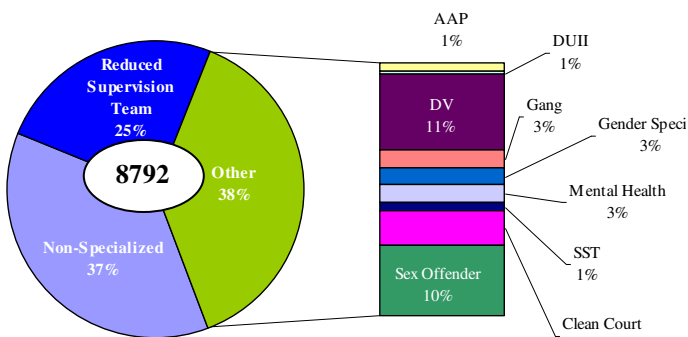
Adult Community Supervision: Caseloads



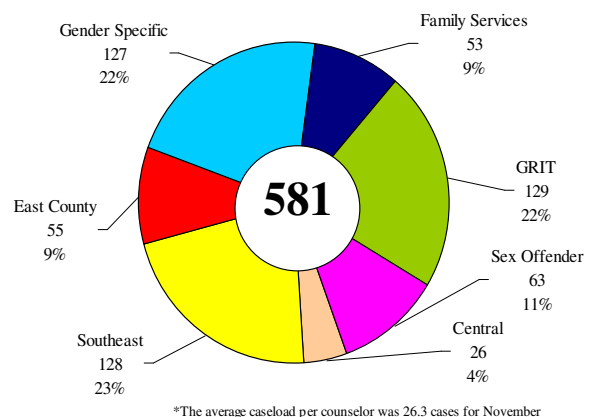
Juvenile Community Supervision: Caseloads



Adult Active Caseload by Type*: November 2008



Juvenile Justice Caseload by Unit*: November 2008



Notes: In November, the overall average of cases convicted and not convicted by the DA has been 50% for both categories, although for the current month convictions rose to 63% of the total cases closed. Adult Active Caseload decreased for the second month in a row, to 8,792. Also, Juvenile Justice Caseload by Unit decreased from a total in October of 597 to a total of 581 in November.