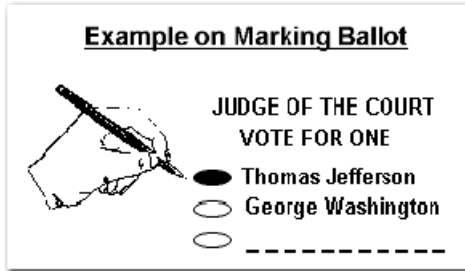


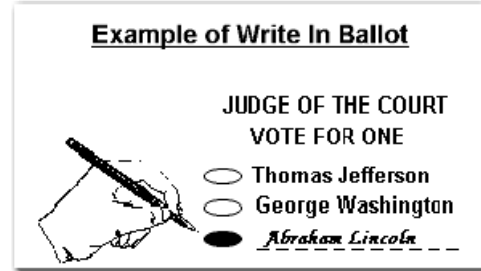
FOR YOUR INFORMATION

To ensure your vote counts, completely fill in the oval (●) to the left of the response of your choice. You may use pen or pencil.

To Write In A Name that is **NOT** printed on the ballot - Fill in the oval (●) to the left of the dotted line (_____) and write in the name on the dotted line.

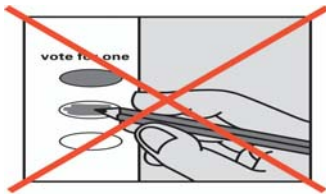


YES!

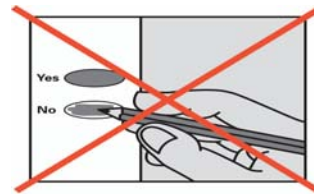


The ballot may have contests printed on front and back. Remember to vote both sides.

If you vote for more than one candidate for an office, your vote for that office will not count (unless otherwise make your intent clear on the ballot).



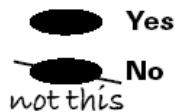
OVERVOTE!



If you make a mistake or change your mind while marking your ballot, you may request a replacement ballot from the Elections Office or you may make your changes on the ballot but it is critical that you make your choice obvious because election workers will inspect each ballot to make sure voter intent is understood and the ballot is counted correctly. Two examples of how to make your intent clear are below.



or



Make your intent clear!

The secrecy envelope is not required. If you forget to enclose the secrecy envelope your ballot will still count. You can open the return envelope and use the secrecy envelope or just deliver it without the secrecy envelope. Election workers will still preserve your privacy even if you do not use the secrecy envelope.

You are not required to vote for all offices or measures on the ballot.

Each time you move you must update your voter registration. Ballots are not forwarded. You can now update your registration online (with Oregon DMV ID). www.OregonVotes.org

If you have a disability or are otherwise unable to mark your ballot you may contact the Elections Division for assistance. Phone 503-988-3720 / Oregon Relay Service 1-800-735-2900.

Don't forget to sign your return envelope. Your ballot will not count if you do not sign the return envelope.

If you sign the wrong return envelope just cross it off and sign the correct one.