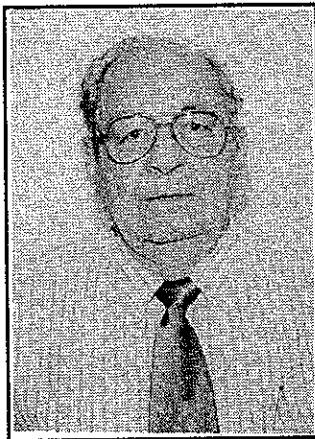


# CITY OF GRESHAM

**Council, Pos. 5**



**ARTHUR C.  
EDMON**

**OCCUPATION:** Retired.

**OCCUPATIONAL BACKGROUND:** General contractor for 41 years in this general area of state.

**EDUCATIONAL BACKGROUND:** Phoenix Union High School, Phoenix, Arizona.

**PRIOR GOVERNMENTAL EXPERIENCE:** Reserve Deputy, Multnomah County Aero & Boat Squadron for approximately 15 years between 1952 and 1967.

General Contractor specializing in commercial construction including banks, schools, churches, and light industrial from 1946 to 1987 in Oregon.

United States Navy SeaBees 1944 to 1946 stationed in the south pacific.

Carpenter Foreman for the Shasta Dam project, Shasta CA. 1938 to 1944

Resident of Gresham for four years.

Resident of East Multnomah/Clackamas County for 30 years (Boring).

Member of Al Kadar Shrine for 44 years.

Member of International Footprinters Association for 40 years (a businessmen's and Policemen's association).

Married (also, one married daughter/husband and two grandchildren reside in Gresham.

*(This information furnished by Arthur C. Edmon)*

**Council, Pos. 4**

## ROBIN PLANCE

**OCCUPATION:** Safeway Stores, Inc., Clackamas Bread Plant, Oven Operator, 1987-Present.

**OCCUPATIONAL BACKGROUND:** 1982-1987 AIM Corp — Supervisor of Project Administration

1979-1982 United Foam Corp. — Maintenance Supervisor.  
**EDUCATIONAL BACKGROUND:** Graduate of Centennial H.S. 1974. Graduate of MHCC 1989 Assoc of G.S.

**PRIOR GOVERNMENTAL EXPERIENCE:** None.

**Council, Pos. 5**

## ROBERT (BOB) J. MOORE

**OCCUPATION:** City of McMinnville, Building Official (Paid), Feb. 1992-present.

**OCCUPATIONAL BACKGROUND:** City of Lebanon, Building Official, Aug. 1989-Feb. 1992. City of Albany, Building Inspector, Aug. 1978-Aug. 1989. Moore-Draper Construction (Albany), Carpenter, July 1976-Aug. 1978. State of Arizona, Correction's Youth Counselor (Tucson, Az), May 1975-July 1976.

**EDUCATIONAL BACKGROUND:** Western State College (OCE) 1970-1975. BS Social Science Corrections, Secondary Education Social Science teaching certificate. Albany Union High School, Albany, Or 1970.

**PRIOR GOVERNMENTAL EXPERIENCE:** City of Albany Budget Committee 1990-1992.

**Council, Pos. 6**

## DAVE EICHNER

**OCCUPATION:** 1992-Present, Director, E.T. Industries, Incorporated.

**OCCUPATIONAL BACKGROUND:** 1991-1992, CFO, Lucky Distributing, Portland, Oregon. 1983-1992, Controller, Portland Adventist Medical Center, Oregon.

**EDUCATIONAL BACKGROUND:** 1991 M.B.A., University of Portland. 1983 B.A., Walla Walla College.

**PRIOR GOVERNMENTAL EXPERIENCE:** 1993-Present, Gresham City Councilor. 1986-1992, Budget Committee, City of Gresham.

## CITY OF GRESHAM

**Measure No. 26-14****Measure 26-15****BALLOT TITLE****QUALIFICATION FOR COUNCIL CHARTER AMENDMENT**

**QUESTION:** Shall city employees and elected officers of the state or other local governments be barred from serving on the council?

**SUMMARY:** This measure amends the City Charter. The Charter now permits any person employed by the city or holding other elected office to serve on the city council. This measure would bar city employees and elected officers of the state, another city, county, or special district, including school districts, from serving on the city council. The change would take effect January 7, 1997. It would apply to elections beginning November 1996.

**EXPLANATORY STATEMENT**

The current Gresham City Charter was adopted May 2, 1978. It was last revised by the voters on November 4, 1986. On March 1, 1994, the City Council appointed a seven-member committee to review the Charter and suggest changes. The Committee met ten times. It gave its final report to the City Council on June 21. This measure is one of four the Committee proposed. On July 19, the Council approved sending this measure to the voters.

Under the current Charter, any person may serve on the Council if: (a) at the time of their election they are a qualified voter as defined in the Oregon Constitution, and (b) they have resided in the City of Gresham at least one year just prior to the election.

This measure amends the City Charter to bar city employees and other elected officers from serving on the Council. Elected officers of the state or another city, county or special district, including school districts would not be eligible to serve on the Council. They could not serve on the Gresham Council during the term of their other office. The change would take effect January 7, 1997. It would apply to elections beginning November 1996.

Submitted by  
Phyllis R. Brough,  
City Recorder/Elections Official

Additional information on this measure  
can be obtained by calling: 669-2660

No arguments FOR or AGAINST this measure were filed.

**BALLOT TITLE****COUNCIL OFFICE VACANCIES CHARTER AMENDMENT**

**QUESTION:** Shall a council office be declared vacant when a councillor misses three consecutive council meetings without a leave of absence?

**SUMMARY:** This measure amends the City Charter. The Charter now says an elective office may be declared vacant if a city councillor fails to attend three consecutive regular city council meetings. This measure would require the office to be declared vacant. The office would be vacant if a city councillor missed three consecutive city council meetings of any kind. The Charter would continue not to count meetings missed with prior approval of the city council. The measure would take effect January 1, 1995.

**EXPLANATORY STATEMENT**

The current Gresham City Charter was adopted May 2, 1978. It was last revised by the voters on November 4, 1986. On March 1, 1994, the City Council appointed a seven-member committee to review the Charter and suggest changes. The Committee met ten times. It gave its final report to the City Council on June 21. This measure is one of four the Committee proposed. On July 19, the Council approved sending this measure to the voters.

This measure amends the City Charter. The Charter now says an elective office may be declared vacant if a City councillor fails to attend three consecutive regular city council meetings. This measure would require the office to be declared vacant. The office would be vacant if a city councillor missed three consecutive city council meetings of any kind. If a councillor misses a meeting with the prior approval of the city council, the absence does not count against the councillor. The measure would take effect January 1, 1995.

Submitted by  
Phyllis R. Brough,  
City Recorder/Elections Official

Additional information on this measure  
can be obtained by calling: 669-2660

No arguments FOR or AGAINST this measure were filed.

# CITY OF GRESHAM

## Measure No. 26-16

## Measure 26-17

### BALLOT TITLE

#### NON-DISCRIMINATION POLICY CHARTER AMENDMENT

**QUESTION:** Shall a non-discrimination policy be added to the City Charter?

**SUMMARY:** This measure adds a new section to the City Charter that declares a city policy to eliminate discrimination. It applies to race, religion, color, sex, marital status, familial status, national origin, age, mental or physical disability, sexual orientation, or source of income. The city would need to enact laws to carry out this policy. The measure would take effect November 9, 1994.

### EXPLANATORY STATEMENT

The current Gresham City Charter was adopted May 2, 1978. It was last revised by the voters on November 4, 1986. On March 1, 1994, the City Council appointed a seven-member committee to review the Charter and suggest changes. The Committee met ten times. It gave its final report to the City Council on June 21. This measure is one of four the Committee proposed. On July 19, the Council approved sending this measure to the voters.

This measure adds a new section to the City Charter that declares a city policy to eliminate discrimination. The policy is like the one adopted by some other Oregon cities. It applies to race, religion, color, sex, marital status, familial status, national origin, age, mental or physical disability, sexual orientation, or source of income. The city would need to enact laws to carry out this policy. The measure would take effect November 9, 1994.

Submitted by  
Phyllis R. Brough,  
City Recorder/Elections Official

Additional information on this measure  
can be obtained by calling: 669-2660

No arguments FOR or AGAINST this measure were filed.

### BALLOT TITLE

#### CHARTER REVIEW COMMITTEE CHARTER AMENDMENT

**QUESTION:** Shall council be required to appoint charter review committee every eight years?

**SUMMARY:** This measure adds a new section to the City Charter that would require the city council to appoint a committee to review the Charter every eight years, beginning in the year 2003. The city council may still appoint a committee to review the City Charter at other times. The measure would take effect November 9, 1994.

### EXPLANATORY STATEMENT

The current Gresham City Charter was adopted May 2, 1978. It was last revised by the voters on November 4, 1986. On March 1, 1994, the City Council appointed a seven-member committee to review the Charter and suggest changes. The Committee met ten times. It gave its final report to the City Council on June 21. This measure is one of four the Committee proposed. On July 19, the Council approved sending this measure to the voters.

This measure adds a new section to the City Charter. The section would require the City Council to appoint a committee to review the Charter every eight years, beginning in the year 2003. The 1978 charter was reviewed by committees in 1983 and 1994. An eight year period was chosen to fit mayor four-year terms. The year 2003 was chosen because it is the beginning of the third term after the 1994 election. The City Council may still appoint a committee to review the City Charter at other times. The measure would take effect November 9, 1994.

Submitted by  
Phyllis R. Brough,  
City Recorder/Elections Official

Additional information on this measure  
can be obtained by calling: 669-2660

No arguments FOR or AGAINST this measure were filed.

## CITY OF GRESHAM

**Measure No. 26-18****Measure No. 26-19****BALLOT TITLE****FOUR-YEAR COUNCIL TERMS CHARTER AMENDMENT**

**QUESTION:** Shall councillors be elected for four year terms with three councillors elected every two years?

**SUMMARY:** This measure amends the City Charter. Councillors are now elected for two year terms. This measure would increase the terms to four years. At the November 1996 general election, councillors would be elected from positions 1, 3, and 5 for four year terms; and from positions 2, 4, and 6 for two year terms. In November 1998 and at each following biennial November election, councillors would be elected from three positions for terms of four years. The measure would take effect November 9, 1994.

**EXPLANATORY STATEMENT**

The current Gresham City Charter was adopted May 2, 1978. It was last revised by the voters on November 4, 1986. On March 1, 1994, the City Council appointed a seven-member committee to review the Charter and suggest changes. The Committee met ten times. It gave its final report to the City Council on June 21. On July 19, the Council approved sending this measure to the voters. This measure was not suggested by the Committee, but it was noted in the report.

This measure amends the City Charter. The 1978 charter had four year terms for councillors. The charter was amended in 1984 to change the terms to two years. Councillors are now elected for two year terms.

This measure would increase the terms to four years. At the November 1996 general election, councillors would be elected from positions 1, 3, and 5 for four year terms; and from positions 2, 4, and 6 for two year terms. In November 1998 and at each following biennial November election, councillors would be elected from three positions for terms of four years. The measure would take effect November 9, 1994.

Submitted by

Phyllis R. Brough,  
City Recorder/Elections Official

Additional information on this measure  
can be obtained by calling: 669-2660

**BALLOT TITLE****COUNCIL PAY CHARTER AMENDMENT**

**QUESTION:** Shall the mayor, council president, and councillors be paid a salary?

**SUMMARY:** This measure amends the City Charter to add pay for elected officers. Pay would be set at \$2,000 per month for the mayor, \$750 per month for the council president, and \$500 per month for each councillor. Pay could only be amended by the voters. The measure would take effect January 1, 1995.

**EXPLANATORY STATEMENT**

The current Gresham City Charter was adopted May 2, 1978. It was last revised by the voters on November 4, 1986. On March 1, 1994, the City Council appointed a seven-member committee to review the Charter and suggest changes. The Committee met ten times. It gave its final report to the City Council on June 21. This measure was not suggested in the Committee report, but it was discussed by the Committee. The Committee concluded that the Council should be paid, but that the rates should be set by ordinance. On August 2, the Council approved sending this measure to the voters.

This measure amends the City Charter to add pay for elected officers. Pay would be set at \$2,000 per month for the mayor, \$750 per month for the council president, and \$500 per month for each councillor. These pay rates could only be amended by the voters. The Council currently receives no pay. It does receive reimbursement for city related expenses. The measure would take effect January 1, 1995.

Submitted by

Phyllis R. Brough,  
City Recorder/Elections Official

Additional information on this measure  
can be obtained by calling: 669-2660

No arguments FOR or AGAINST this measure were filed.

No arguments FOR or AGAINST this measure were filed.

# CITY OF GRESHAM

## Measure No. 26-20

### BALLOT TITLE

#### EMPLOYEE LIMITATION CHARTER AMENDMENT

**QUESTION:** Shall the number of full-time City employees be limited by Charter?

**SUMMARY:** This measure amends the City Charter. It limits the total number of city employees to no more than 6.5 for each 1,000 of city population. This ratio could only be amended by the voters. The measure would take effect July 1, 1995.

### EXPLANATORY STATEMENT

The current Gresham City Charter was adopted May 2, 1978. It was last revised by the voters on November 4, 1986. On March 1, 1994, the City Council appointed a seven-member committee to review the Charter and suggest changes. The Committee met ten times. It gave its final report to the City Council on June 21. This measure was not suggested in the Committee report, but it was discussed by the Committee. The Committee concluded that limitations on city employee positions should be set by ordinance. On August 2, the Council approved sending this measure to the voters.

This measure amends the City Charter. It limits the total number of city employees to no more than 6.5 for each 1,000 of city population. No other Oregon city has such a ratio in its charter. The ratio of city full-time equivalent (FTEs) to city population is 6.0 for the current fiscal year. This ratio of number of city employees to population could only be amended by the voters. The measure would take effect July 1, 1995, which is the beginning of the next fiscal year.

Submitted by

Phyllis R. Brough,  
City Recorder/Elections Official

Additional information on this measure  
can be obtained by calling: 669-2660

### ARGUMENT IN FAVOR

It is the nature of all governments to expand faster than the people they serve. In that regard, this Measure which was placed before us by the City Council is a reasonable and practical way to make sure that future growth of our city government doesn't get away from us.

It would allow the number of city employees to increase only as a function of population growth ... or, if and when the people voted to increase (or decrease) the ratio.

The following is the text of an editorial which ran in the *Gresham Outlook* (5/25/94) and I think it makes an excellent case for voter approval of this Measure.

#### "No city needs large number of employees

"(The) ... proposal that Gresham's city charter limit the number of city employees to six per 1,000 residents has merit.

"The city currently has 5.5 full-time employees per 1,000 residents, the smallest number of Oregon's major cities. Portland, for example has 10.2 employees per 1,000, Salem has 9.6 and Eugene has 9.4.

"Some might think that Gresham's employee level is too small, in comparison with other cities. Yet, it is quite possible that those other have too many employees. Six employees per 1,000 residents might actually be a more efficient formula than the one used by Portland.

"Without a charter amendment, though, Gresham, is likely to emulate Portland, rather than Portland and the other cities putting curbs on the number of employees."

The Explanatory Statement which preceded this argument pointed out that no other Oregon city has a limitation on the ratio of employees to population. If Gresham voters adopt this common sense proposal, it won't be long until the citizens of other cities and counties will be following our lead.

Vote YES on 26-20

(This information furnished by Don McIntire)

The printing of this argument does not constitute an endorsement by Multnomah County, nor does the county warrant the accuracy or truth of any statement made in the argument.

No arguments AGAINST this measure were filed.

## CITY OF GRESHAM

## CITY OF LAKE OSWEGO

**Measure No. 26-21**

Councillor

## BALLOT TITLE

MT. HOOD PARKWAY — HOGAN ROAD WITH LIDS — ADVISORY VOTE

**QUESTION:** Should Gresham support the Hogan Road route for the Mt. Hood Parkway only if it includes lids?

**SUMMARY:** The State of Oregon is studying options for the Mt. Hood Parkway, a new state highway that will connect I-84 and the Mt. Hood Highway (US 26).

**The Gresham City Council supports the Hogan Road option only if it includes lids covering parts of the parkway.**

Lids can cover a below grade roadway and can be landscaped and used as parks or built on.

This vote is advisory only. Legally the result cannot bind the State or the City Council.



**BILL  
ATHERTON**

**OCCUPATION:** Office Building Owner/Manager.

**OCCUPATIONAL BACKGROUND:** Business owner, historic renovation. Legislative consultant/analyst.

**EDUCATIONAL BACKGROUND:** B.A. Stanford University, 1970.

**PRIOR GOVERNMENTAL EXPERIENCE:** Lake Oswego Transportation Committee. Luscher Farm Study Committee. President, McVey-Southshore Neighborhood Association. Legislative consultant/analyst, Calif Assembly Science and Technology Advisory Council.

Residents, business operators, and public servants in Lake Oswego do many things well, as individuals and as a community. The result: a reasonably high standard of livability ... at least for now.

Still, many of us share two major concerns:

A strong voice is needed at City Hall for residents and neighborhood associations, especially as we develop neighborhood plans and we seek possibilities for cost-saving cooperation with schools on transportation, Community School, mentoring, and recreational facilities. Although East End Development, the trolley, and I-5/217 interchange are viewed as commercial concerns, neighborhoods are affected as well.

Growth pressure and our community's relationship with METRO, Clackamas County, and the state is a concern. Lake Oswego needs a strong, unified voice outside our borders to genuinely have a chance to protect future livability and sustainability. From my legislative background and regionwide policy interests I can contribute solid proposals on annexation reform, transportation finance, UGB policies, urban reserves and other growth management issues.

There is considerable confusion regarding my views on growth management. Some associate me with "no growth" based on inaccurate television and radio reports; others think I'm a developer because of "Atherton Heights". I initiated the successful challenge to a late night attempt to break the UGB there, but I am not the developer!

What I advocate is a NEUTRAL growth policy where development pays its own way and can't degrade livability for current residents. This is not no growth ... though it's considerably different than present pro-growth policies.

I've demonstrated commitment to protecting our investment in this community and will do so as a member of the City Council.

*(This information furnished by Bill Atherton)*

## EXPLANATORY STATEMENT

A new state road is needed to connect I-84 and the Mt. Hood Highway (US 26). This road will complete a missing link in the state highway system. In February 1988 the Gresham City Council and the East Multnomah County Transportation Committee suggested that the Oregon Department of Transportation (ODOT) conduct design studies.

In December 1988 the Council adopted a City Plan with findings about the need for a new limited access Mt. Hood Parkway between I-84 and US 26. The Plan was approved by the Land Conservation and Development Commission and METRO as meeting the Regional Transportation Plan.

The City Council in 1991 endorsed several options for the Mt. Hood Parkway along Hogan and Kane roads. These options were not acceptable because of effects on neighborhoods, and grade and design problems. In the Fall of 1992 the City Council and Planning Commission agreed on a below grade Hogan Road option. They found that this parkway option best fits Gresham's long term planning and transportation goals. It also promotes community liability. The Hogan Road below grade option also gives good road access without dividing the city east and west.

In early 1993 the City Council endorsed the below grade Hogan Road option. The City Council supports this option only if it includes lids. Lids cover the portions of a road that are below grade. Lids are covers that can be landscaped and used as parks or built on. The City Council placed this measure on the ballot to see if City voters support the Hogan Road parkway option only if it includes lids.

Under Oregon law voters may adopt legislation. Voters may not make administrative decisions. Oregon courts have held that decisions locating highways are administrative. However, the voters may advise the City Council and state decision makers. The result of the vote on this ballot measure will be advisory only. It will not legally bind either the ODOT or the City Council.

Submitted by  
Phyllis R. Brough,  
City Recorder/Elections Official

Additional information on this measure  
can be obtained by calling: 669-2660

No arguments FOR or AGAINST this measure were filed.

# CITY OF LAKE OSWEGO

Councillor



**HEATHER  
CHRISMAN**

**OCCUPATION:** Co-Owner Chrisman Picture Frame & Gallery.  
**OCCUPATIONAL BACKGROUND:** Junior High Teacher, High School History Teacher  
**EDUCATIONAL BACKGROUND:** BA, English, University of Idaho.  
**PRIOR GOVERNMENTAL EXPERIENCE:** Lake Oswego City Councillor, 1990-1994. President, Lake Oswego City Council, 1993.

Personal Background: 24 year resident of Lake Oswego, married, with 3 grown sons.

Community experience includes: Lake Oswego Chamber of Commerce Board of Directors, Chairman Lake Oswego Women's Coalition, Board Member of the Lake Oswego School Foundation, Portland Progress Board Growth Committee

Livability is of primary importance to me. Lake Oswego is a very special place and to see that it remains that way is the job of a city councillor. This requires making critical choices and looking at the future strategically. I share citizen concerns about the problems associated with growth: traffic congestion, too much traffic on narrow streets, loss of open space and environmental quality. I am concerned that our residential area afford safety and that our commercial areas be designed in a pedestrian friendly way. To me this means smaller signs, buildings next to the sidewalk, and visually inviting public spaces.

As a city councillor I believe in the importance of citizen awareness and involvement in community issues. I know that Lake Oswego is a town that has high expectations of their community and its leaders and want to feel they are listened to when they see problems.

As citizens and taxpayers all of us are concerned that we pay as few taxes as possible and that the tax money we do pay is spent wisely. As a small business owner I have experience with the necessity of keeping costs down while keeping our investment in Lake Oswego secure.

Integrity, Experience, Leadership  
 Elect Heather Chrisman for Lake Oswego City Council

*(This information furnished by Heather Chrisman)*

Councillor



**EDWARD K.  
CHRISTENSEN**

**OCCUPATION:** Civil Engineer, specializing in land development infrastructure analysis, planning, design and construction.

**OCCUPATIONAL BACKGROUND:** Director of Engineering at Alpha Engineering, 2 years. Christensen Engineering, self employed consultant, Project Manager for Nolte & Associates, 3 years. Project Designer for the Spink Corporation, 3 years. General Contractor from 1985-present. Field Engineer for ARAMCO in Saudi Arabia, summer 1981 and 1982.

**EDUCATIONAL BACKGROUND:** B.S. Civil Engineering, California State University Sacramento, 1985. Professional Engineer, licensed in Oregon, Washington and California.

**PRIOR GOVERNMENTAL EXPERIENCE:** No elected offices.

**ED'S COMMITMENT TO THE CITIZENS OF LAKE OSWEGO:**

— To enhance the quality of life within the community.  
 Ed's practical acquaintance with infrastructure analysis — the planning and development of livable societies for the 21st century — combined with his experience in community involvement, qualify him to participate in the future needs of Lake Oswego. He will work to see that revenues are wisely and efficiently used. He will argue that programs and rehabilitative projects endorsed by the City must benefit the maximum number of residents practicable. Irrespective of the issues, he will be decisive.

— To keep Lake Oswego a safe community.  
 With a rise in crime and violence in neighboring communities Ed understands that the admirable Lake Oswego Police Department will need increased moral and financial support to keep crime at bay. For example, Ed will encourage expanded neighborhood crime watch and continually updated anti-crime programs in Lake Oswego schools, and throughout the community.

— To maintain and enhance the eminence of Lake Oswego public schools.

Not only for his own child, but for all other Lake Oswego children, Ed Christensen is eager to help ensure that the standards of excellence for which Lake Oswego schools are admired will continue and grow. He is an ardent supporter of proposals geared toward high academic achievement.

— To develop mutually responsive relationships with neighboring communities.

Daily, Ed Christensen is involved with the leaders of neighboring towns through his work as a civil engineer acting on land use issues. He is aware of and understands their concerns.

*(This information furnished by Edward K. Christensen)*

## CITY OF LAKE OSWEGO

## Councillor



**DAVID  
COPLEY  
FORMAN**

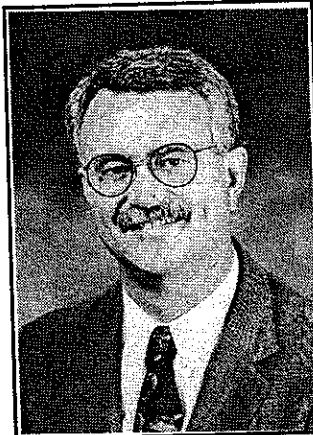
**OCCUPATION:** Attorney: Stoel Rives Boley Jones & Grey.  
**OCCUPATIONAL BACKGROUND:** The practice of law, primarily in business and related areas — served as general counsel for a Portland company before joining Stoel Rives.  
**EDUCATIONAL BACKGROUND:** B.A./J.D.: The University of Michigan.  
**PRIOR GOVERNMENTAL EXPERIENCE:** No prior elected or appointed office.

As a young and enthusiastic parent, new homeowner, and member of the community, I am:

- Dedicated to preserving the quality of the Lake Oswego schools.
- Dedicated to maintaining the quality of community life through a clean and safe environment.
- Dedicated to maintaining and improving Lake Oswego's infrastructure, including city streets.
- Dedicated to finding solutions to Lake Oswego's traffic problems.
- Dedicated to developing a responsible and realistic long-term financial strategy for Lake Oswego.
- Dedicated to maintaining and enhancing Lake Oswego's educational and recreational resources, such as libraries and parks.
- Dedicated to serving and fulfilling the goals and objectives of the Lake Oswego community.

*(This information furnished by David Copley Forman)*

## Councillor



**CRAIG  
PROSSER**

**OCCUPATION:** Financial Planning Manager, Metro.  
**OCCUPATIONAL BACKGROUND:** Chief Deputy Auditor, City of Portland, 1988-1993. Debt Manager, City of Portland, 1986-1988. Senior Budget Analyst, City of Portland, 1982-1986. Deputy Director of Administration, Western SUN, 1980-1982. Supervisor of Budget and Personnel, Oregon Dept. of Energy, 1977-1980. Assistant Budget Analyst, Oregon Executive Department, 1975-1977  
**EDUCATIONAL BACKGROUND:** MPA, American University, 1975. BA, Political Science, Whitman College, 1972  
**PRIOR GOVERNMENTAL EXPERIENCE:** Chair, Lake Oswego Citizen's Budget Committee

**COMMUNITY**

A successful community is more than the sum of its parts. A successful community needs shared vision, measurable goals, and leadership which builds partnerships for effective action. I am committed to making Lake Oswego a successful community. I will work for an open dialog involving all parts of our community, and I will forge partnerships which link together our many parts into an effective whole.

**LAKE OSWEGO'S FUTURE**

Lake Oswego faces major challenges including population growth, economic development, transportation, traffic safety, parks and open spaces, public safety, education, and community planning. Our future, and our future quality of life, depend on the choices and decisions we make today. I am committed to preserving the character and qualities which make Lake Oswego an attractive place to live and raise families. I am ready to ask the difficult questions and make the critical choices to advance our quality of life in the face of unprecedented change.

**WISE INVESTMENT OF PUBLIC RESOURCES**

The challenge for the 90s is doing more for less. It is also making sure that limited public resources are invested in those programs that will have the greatest return for this community in the coming years. Meeting the challenges of today while positioning this community to meet the challenges of tomorrow will take hard work, hard decisions, and experience. I possess the experience and commitment, and I will put that experience and commitment to work for all of Lake Oswego.

*(This information furnished by Craig Prosser)*



# CITY OF LAKE OSWEGO

**Councillor**



**ROBERT S.  
SIMON**

**OCCUPATION:** Attorney, Land Use and Transportation Law.  
**OCCUPATIONAL BACKGROUND:** President, The Robert S. Simon Law Firm, Oregon City, Oregon.  
**EDUCATIONAL BACKGROUND:** Juris Doctorate, Northwestern School of Law at Lewis and Clark College, with a Natural Resources Law Certificate. Bachelor of Arts, Hamilton College, Clinton, New York.  
**PRIOR GOVERNMENTAL EXPERIENCE:** Member, Lake Oswego Comprehensive Plan Review Committee.

As a land use attorney and an Affiliate Member of the Oregon Board of Realtors, I have seen the difficulties of citizens and professionals who try to promote or oppose growth. The work I did on the comprehensive plan committee was directed toward making the land use process clearer and more friendly. As a City Council member, I will work toward having the new plan and the ordinances which implement it remain faithful toward the vision of the drafting committee. Only with a clear vision of the city, articulated in the plan and the codes, can the land use system be made more friendly to all citizens.

Further, I support:

- The Parks Bond
- Technology Targeted School Funding
- Bus Shelters at all Bus Stops

I do not support:

The "A" Avenue Street Project because it blocks traffic flow, increases congestion in town, and does not improve the pedestrian access.

Historical designations of property without compensation for lost value because many people can lose the investment of a life-time by the restrictions this designation imposes.

Please elect Robert S. Simon to City Council to ensure a vision for the future.

Please call me directly if you want any information; 503-557-0409

*(This information furnished by Robert S. Simon)*

**Councillor**

## JASON KENNETH FELDMAN

**OCCUPATION:** Law Student, Lewis & Clark Northwestern School of Law.

**OCCUPATIONAL BACKGROUND:** Employment Law Intern, Lewis & Clark Legal Clinic, Portland, Oregon. Political Fundraiser, Dorsee Productions, LaJolla, CA. Nuclear Freeze Initiative Intern, Los Angeles, CA. U.S. Senate Intern, Senator Tom Daschle, Washington, D.C. Distribution Manager/Columnist, Santa Monica News, Santa Monica, CA. Environmental Researcher, Mediation Institute, Calabasas, CA.

**EDUCATIONAL BACKGROUND:** Lewis & Clark Northwestern School of Law, J.D. expected 8/95. University of California at San Diego, B.A. received 3/91. Australian National University, student of International Relations, 1990.

**PRIOR GOVERNMENTAL EXPERIENCE:** SEE occupational background.

## TOM LOWREY

**OCCUPATION:** Attorney, self employed.

**OCCUPATIONAL BACKGROUND:** Attorney.

**EDUCATIONAL BACKGROUND:** Law Degree, McGeorge School of Law, Sacramento, CA. Masters of Law Tax, same school. Business Administration, University of Michigan, Ann Arbor, MI.

**PRIOR GOVERNMENTAL EXPERIENCE:** Committee for Citizen Involvement, Lake Oswego, 1991-92. Assistant on staff for Leo McCarthy Speaker of House California Leg.

## NORMA HEYSER PETERSON

**OCCUPATION:** Licensed Massage Technician (self-employed).

**OCCUPATIONAL BACKGROUND:** Artist (self-employed). Creative Consultant (self-employed).

**EDUCATIONAL BACKGROUND:** Lakewood School, Lake Oswego. St. Helen's Hall, Portland. Lincoln High School, Portland (12). Univ. of Oregon. Museum Art School (certificate 1956). Marylhurst College (B.A. 1980). Ariadne Professional Center (massage licensing 1982).

**PRIOR GOVERNMENTAL EXPERIENCE:** Chair, First Addition Neighbors Assn., 1994, 1976. L.O. Comp. Plan Task Force (Parks & Recreation) 1976. Chair, Comp. Plan, sub-committee on Cultural & Educational Programs, Activities & Facilities 1976.

## JOSH REITER

**OCCUPATION:** Real Estate Sales & Marketing, Prudential Rod Girtman Realtors.

**OCCUPATIONAL BACKGROUND:** Continental Airline, America West Airline.

**EDUCATIONAL BACKGROUND:** M.H.C.C.

**PRIOR GOVERNMENTAL EXPERIENCE:** Mt Park Arc. Design Committee. Jefferson Park Townhouses Board of Directors..

## KARL ROHDE

**OCCUPATION:** Product Market Manager — Acumen, Inc.

**OCCUPATIONAL BACKGROUND:** Marketing Coordinator — Oregon Software, Inc.

**EDUCATIONAL BACKGROUND:** Kindergarten — Forest Hills Elementary. Grades 1-6 — Lakewood Elementary. Grades 7-8 — Waluga Junior High School. Grades 9-12 — Lakeridge High School. College — Rensselaer Polytechnic Institute, Troy, NY (2.5 years).

**PRIOR GOVERNMENTAL EXPERIENCE:** Lake Oswego Ad Hoc Transportation Committee. Neighborhood Traffic Advisory Board

## CITY OF LAKE OSWEGO

**Measure No. 3-30****BALLOT TITLE****TO ESTABLISH A TAX BASE**

**QUESTION:** Shall the City of Lake Oswego be authorized a \$2,183,751 tax base beginning with the 1995-96 fiscal year?

**SUMMARY:** In 1992, the voters approved a three-year property tax serial levy. This levy funds police, fire and library operations. This levy expires at the end of fiscal year 1994-95. The City Budget Committee decided to ask the voters to incorporate the funding provided by the serial levy into a new property tax base. A new tax base would provide a permanent source of funding.

The amount of the new tax base is designed to provide about the same level of funding as the expiring serial levy plus the current tax base. The tax rate of the new tax base will be about \$.81 per thousand of assessed value. This is equal to the \$.68 tax rate of the expiring serial levy plus the \$.13 tax rate of the current tax base. The tax base in the current fiscal year is \$340,553. The tax base has not been increased by the voters since 1910.

The estimated tax cost for this measure is an **ESTIMATE ONLY** based on the best information available from the county assessor at the time of estimate.

The tax levy is subject to the other governmental purposes limits of Section 11b, Article XI of the Oregon Constitution. Unless additional taxes are approved in the future, the proposed tax measure will not reduce property tax collections for other units of local government pursuant to Section 11b, Article XI of the Oregon Constitution or implementing legislation.

**Summary:**

This measure updates the City's 1910 tax base by adding the amount raised by the expiring police, fire and library serial levy. The updated tax base will provide a permanent source of funding for these services.

**Submitted by**

Jeffrey G. Condit,  
City Attorney

**Additional information on this measure  
can be obtained by calling: 635-0270**

**EXPLANATORY STATEMENT****BALLOT MEASURE TO UPDATE CITY TAX BASE**

If enacted, this ballot measure will update the City's tax base, which was last increased by the voters in 1910. The measure has been placed on the ballot by the Lake Oswego City Council at the recommendation of the City Budget Committee.

— The amount of the new tax base — \$2,183,751 — adds the funding authorized by an expiring police, fire and library serial levy into the City's current tax base.

— The three year serial levy was approved by city voters in 1992. It expires on June 30, 1995. About 30% of the levy supports police and fire services, while 70% funds library operations. The updated tax base will provide a permanent source of funding for these on-going services.

— The tax rate of the new tax base will be about \$.81 per thousand of assessed value. This is equal to the \$.68 tax rate of the expiring serial levy plus the \$.13 tax rate generated by the City's current \$340,553 tax base.

— Under the Oregon Constitution, the tax base may not be increased by more than six percent a year without a vote of the people. The tax base is also subject to the property tax limits imposed by Article XI Section 11b of the Oregon Constitution (Measure 5).

**No arguments AGAINST this measure were filed.**

# CITY OF LAKE OSWEGO

## Measure No. 3-30

### ARGUMENT IN FAVOR

This "Updated" Tax Base will insure and stabilize funding for Police, Fire and Library services.

This Tax Base Ballot Measure will combine an expiring Police, Fire and Library serial levy with the existing tax base that was established in 1910 when the City of Lake Oswego was incorporated.

The proposed "Updated" Tax Base of 81¢ combines the amount of the expiring voter-authorized 68¢ serial levy and the existing tax base of 13¢ (68¢ + 13¢ = 81¢).

With this ballot measure the taxpayer will benefit because a tax base limits the City by constitutional directive *not* to increase the total dollar amount by more than 6% per year. Under a serial levy taxes are figured on assessed property value, and assessed valuations have historically increased by as much as 10% or more annually.

**CITIZENS FOR AN "UPDATED" TAX BASE**  
urge you to vote YES on Ballot Measure 3-30.

"This consolidation is another step to preserve our livability, with realistic budget controls."

— Dee Denton, Executive Director,  
Lake Oswego Chamber of Commerce

"The users, the staff and the volunteers of the Library should be spared the expense, the stress and hard work of passing a Library Levy every three years. Patrons deserve the quality of service that stabilized funding of a tax base will provide."

— Jack Radow, member of Friends  
of the Lake Oswego Public Library

"The bottom line of this housekeeping measure is to consolidate an expiring Fire, Police and Library Levy into the small existing tax base. This updated tax base will provide consistent funding for these vital services and remove the expense of special elections. This bill places public support of these necessary community services on a business-like basis not subject to emotional appeals by special interest groups."

— William A. Headlee, 1800 Headlee Lane, Lake Oswego, OR

**PLEASE VOTE YES ON BALLOT MEASURE 3-30.**

*(This information furnished by CITIZENS FOR AN "UPDATED"  
TAX BASE, C. Herald Campbell, Treasurer)*

The printing of this argument does not constitute an endorsement by Multnomah County, nor does the county warrant the accuracy or truth of any statement made in the argument.

# CITY OF MAYWOOD PARK

## Councilman

### CHARLES F. BRIDGE

**OCCUPATION:** Retire USAF.

**OCCUPATIONAL BACKGROUND:** 20 years USAF. 10 years KPTV-12 operation man.

**EDUCATIONAL BACKGROUND:** Assoc. of Art Community College of the Air Force. Parkrose High School.

**PRIOR GOVERNMENTAL EXPERIENCE:** 6 year Maywood Park City Council. 2 year Council Pres.

### JOHN D. MEDAK

**OCCUPATION:** Retired.

**OCCUPATIONAL BACKGROUND:** Real Estate Broker and Real Estate Appraiser.

**EDUCATIONAL BACKGROUND:** Roosevelt High School — 12th. US Army Air Force courses in Bombardiering and Celestial Navigation. Ratings in both.

**PRIOR GOVERNMENTAL EXPERIENCE:** Chairman Board of Directors Parkrose Water District. Elected.

### JEFFREY C. STEFFEN

**OCCUPATION:** Attorney — Transamerica Title Insurance Co./Paid.

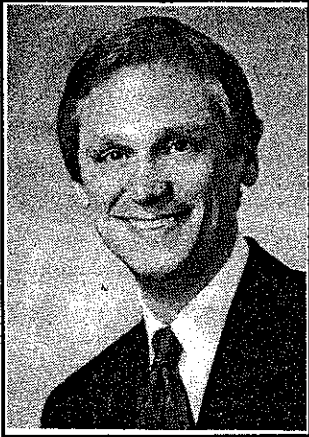
**OCCUPATIONAL BACKGROUND:** Above 18 years.

**EDUCATIONAL BACKGROUND:** Parkrose High School. Portland State University, BS. Lewis & Clark Law School, JD.

**PRIOR GOVERNMENTAL EXPERIENCE:** Judge / City Attorney Maywood Park. City Councilperson 4 yrs. Mayor 2 years.

## CITY OF PORTLAND

## Commissioner, Pos. 2



**EARL  
BLUMENAUER**

**OCCUPATION:** Portland City Commissioner.

**OCCUPATIONAL BACKGROUND:** Administrator; elected official.

**EDUCATIONAL BACKGROUND:** B.A./J.D., Lewis and Clark College.

**PRIOR GOVERNMENTAL EXPERIENCE:** Representative from Southeast Portland, Oregon State Legislature; Board Member, Portland Community College; Multnomah County Commissioner; Portland City Commissioner.

Dear Friends:

I am asking for your continued support and your vote for Portland City Council.

Together we've provided the leadership necessary to build light rail — both MAX and the westside expansion. People around the country study our model of how citizens and government work together to manage growth.

Working together, we obtained City Council approval for the most far-reaching financial support for Portland schools in the City's history.

We established a nationally-recognized program to take cars away from repeat drunk drivers and customers of drive-by prostitution.

Even though we are not always successful, we always try hard and we work together.

We have not (yet) been able to convince the City Council to build the I-5 Water Avenue on-ramp. We cannot afford to waste money or confuse our priorities with talk of moving the east-bank freeway. Additional studies must be stopped, and we must build SE Portland's long-promised and badly needed freeway access.

Tax breaks without the promise of even just one new job cannot continue. Our money is better spent in our neighborhoods and by investments that create new jobs.

Taking these tough stands together is worth the time and effort. Portland is certainly a better place for our efforts — both because of our successes and our willingness to stand-up for what we believe in.

I would value and appreciate your support and vote on November 8th. Together we can keep Portland a place people want to visit and a model for how a city and its citizen partners reach their goals.

Working for you on the City Council is the best local government job in America. I would like to continue.

Sincerely,  
Earl Blumenauer

*(This information furnished by Earl Blumenauer)*

## Commissioner, Pos.3



**GRETCHEN  
KAFOURY**

**OCCUPATION:** Portland City Commissioner.

**OCCUPATIONAL BACKGROUND:** Multnomah County Commissioner (1985-90). Oregon State Representative (1977-1983). Teacher, Civil Rights Activist, Peace Corps Volunteer — Iran

**EDUCATIONAL BACKGROUND:** Whitman College, B.A. Music — 1963. University of Michigan — Peace Corps Training

**PRIOR GOVERNMENTAL EXPERIENCE:** See above

**Gretchen Kafoury: For Neighborhoods**

To ensure safe neighborhoods, quality education, affordable housing and new jobs: business, non-profits, citizens and local government must work together. As Commissioner for Housing and Community Development, Kafoury gets results:

- Together with community leaders, Kafoury forced slumlords to bring neglected housing up to code. She's reclaimed abandoned houses, cutting the number in half in just four years.
- Created the Community Initiatives program, providing 75 neighborhoods with seed money for community projects. One community built a playground; another in Southeast plans a community center.
- Brought business and social service leaders together around an action plan to close mass homeless shelters and provide better services to end the cycle of homelessness.

**Gretchen Kafoury: For Taxpayers, Homeowners, and Renters**

Kafoury has proven government can do more with less. She believes quality affordable housing is the best investment a city can make to improve neighborhoods:

- A \$100,000 investment by the city leveraged \$11 million in private lending to rescue 352 homes from bankruptcy court after the collapse of Dominion Capital Corp.
- A \$10,000 investment by the city leveraged \$800,000 in private financing for a Down Payment Fund to help low-income families become homeowners.
- Developed 1,700 affordable housing units in Portland neighborhoods.

**Gretchen Kafoury: For Portland**

Dear Voter:

Together we can make Portland the city we all hope for. With safe communities. Decent, affordable housing. Every neighborhood a good place to do business.

As your commissioner for housing and community development, I'm proud of four years of positive results improving our neighborhoods. I want to keep finding innovative ways government can do more with less.

I'm asking for your vote, so I can keep on working for you and your neighborhood. Thank you.

**Vote for Gretchen Kafoury**

*(This information furnished by Gretchen M. Kafoury)*

# CITY OF PORTLAND

Auditor



**BARBARA  
CLARK**

**OCCUPATION:** Portland City Auditor.

**OCCUPATIONAL BACKGROUND:** Certified public accountant and community volunteer.

**EDUCATIONAL BACKGROUND:** Reed College (A.B., 1962); Simmons College (M.S., 1967); Portland State University (post-baccalaureate in accounting, 1977).

**PRIOR GOVERNMENTAL EXPERIENCE:** Independent auditor, Confederated Tribes of the Umatilla Indian Reservation.

**COMMUNITY INVOLVEMENT:** City Club of Portland; Oregon Society of CPAs; Raphael House of Portland; The Volunteer Center; Portland Future Focus.

**BARBARA CLARK'S PRIORITIES:**

- Promote cost-effective city services by continuing our program of performance audits.
- Coordinate the annual city-wide financial audit.
- Manage the city recorder offices.

"Auditor's annual review of municipal performance is required reading for new mayor and council."

— The Oregonian 12/8/92

"Portland auditor proposes ethical code for city officials."

— The Oregonian 1/13/94

"A performance review by the auditor's office indicates that police efficiency has improved but could be better."

— The Oregonian 2/23/94

Barbara Clark cares about Multnomah County! Only the portion of the county inside Portland city limits can vote for City Auditor. However, Barbara Clark will evaluate city finances and services in a regional context, and recommend actions that are fair to all metro area citizens.

*(This information furnished by Barbara Clark)*

## Measure No. 26-10

### BALLOT TITLE

#### GENERAL OBLIGATION BONDS FOR PARK REPAIRS AND IMPROVEMENTS

**QUESTION:** Shall Portland repair and improve 99 neighborhood parks by issuing \$58,800,000 in general obligation bonds? If the bonds are approved, they will be repaid from taxes on property or property ownership that are not subject to the limits of section 11b, Article XI of the Oregon Constitution.

**SUMMARY:** This measure would allow the City to issue bonds and use the money for 114 projects at 99 park sites. These projects would make public safety improvements; the City would fix worn out pools, paths, lights, restrooms, play areas, sports fields and fences. Old watering and heating systems would be replaced. The proposal will make these basic repairs, renovate the city's existing community centers, and do other capital construction and improvements.

These projects include improving parks Multnomah County recently gave the City. The funds would provide new soccer fields in Northeast Portland and in Southwest Portland. The City would also add a senior center and new community centers in East Portland and in Southwest Portland. All of the money will be spent for repairs and improvements, not for day-to-day park operations. The purpose of these projects is to expand the city's recreation choices for adults and for youth.

The estimated total amount to be collected annually is \$5,874,000.00, in each of the twenty years of the life of the bonds. The estimated tax impact of this measure will be 22 cents per \$1,000 of assessed value. These are ESTIMATES ONLY, based on the best information from the County Assessor and from bond market sources at the time of the estimates. The levy is outside the limitations provided in sections 11 and 11b, Article XI of the Oregon Constitution. The measure would not reduce property tax collections by other units of government.

### EXPLANATORY STATEMENT

Portland's parks serve all the people. Neighborhood parks, open space, community centers and public recreation are a vital part of Portland's special quality of life.

The Portland Parks and Recreation Bond Measure will ensure that our parks continue to serve our families, our young people, our neighborhoods and our future.

**Serving Every Neighborhood** Measure 26-10 will raise \$58.8 million over the next twenty years for improvements to 99 city parks and recreation centers. The majority of funding will go to repair, renovate and modernize existing facilities. Measure 26-10 will also build new community centers in East Portland and Southwest Portland.

**Parks and Public Safety** Safe parks mean safer neighborhoods in a safer city. Today unsafe restrooms and ill-lit walkways pose serious park security problems. Measure 26-10 will mean safer restrooms, better in-door and out-door lighting and modern security systems — improvements that will discourage crime and vandalism, and make our parks safer for all park users and neighbors.

## CITY OF PORTLAND

**Measure No. 26-10**

**Parks and Public Schools** Many parks are located near public schools, and all school children benefit from park resources. Parks teach our children about nature, art, culture and community values. Public recreation is critical to their healthy development. Measure 26-10 will continue Portland's splendid partnership between our parks and public schools — and ensure that young people are not forced to turn elsewhere.

**Community Centers for Families and Seniors** Portland's community centers bring us together. Today, however, the average age of existing community centers is 62 years. As a result, they abound in electrical, mechanical, plumbing, and structural problems. Measure 26-10 will fund extensive community center repairs and improvements that will especially benefit older residents with new, expanded activities and opportunities for seniors.

**Sports & Recreation Improvements** Portland is famous for its healthy lifestyles. Today, however, existing sports and recreation facilities are clearly inadequate. For example, the average age Portland's swimming pools is 56 years. Poor irrigation and drainage of sportsfields is another problem. Along with six new ball fields and fourteen new soccer fields, 26-10 will fund pool and irrigation improvements to keep our parks in step with future sports and recreational requirements.

**Saving Tomorrow by Investing Today** Measure 26-10 will save taxpayers money in the long run by fixing problems before they get worse. Repairs and improvements will also cut day-to-day park expenses. Improved irrigation and renovations to mechanical systems alone will save Portland taxpayers an estimated \$250,000 in annual operating costs.

**Portland's Parks — Past and Future** Our pioneers made Portland a city of parks as well as roses. Subsequent generations added to this legacy. Today, however, Portland's parks need our help. Years of neglect have taken their toll. The time has come to reinvest in our neighborhoods — to stand up and be counted for our parks — and our future.

**Help Keep our Portland City Parks Safe and Sound.**

Submitted by  
Charlie A. Hales,  
Portland City Council

Additional information on this measure  
can be obtained by calling: 823-4682

**ARGUMENT IN FAVOR****DO YOU LIVE IN NORTH/NORTHEAST PORTLAND?**

There are over **39** reasons to vote **YES on MEASURE 26-10** and keep our neighborhood parks safe and sound!

**MEASURE 26-10** will make  
parks repairs and improvements in:

- East Delta Sports Fields
- East Delta District Office
- Erv Lind Stadium
- NE Soccer Fields (new)
- Holladay West Park
- Peninsula Community Center
- Peninsula Rose Garden
- Interstate Firehouse Cultural Center
- St. Johns Community Center
- St. Johns Community Garden
- Montavilla Community Center & Pool
- Arbor Lodge Park
- Cathedral Park
- Oregon Park
- Northgate Park
- John Luby Park
- Overlook House
- Grant Pool
- Dawson Park
- University Park
- Irving Park
- Woodlawn Park
- Rocky Butte
- Glenhaven Park
- Normandale Park
- Peninsula Park
- Pier Park
- Wellington Park
- St. Johns Park
- Rose City Park
- Montavilla Park
- Wilshire Park
- Columbia Park
- George Park
- Knott Park
- Alberta Park
- Overlook Park
- Grant Park
- Farragut Park

All of these parks in our neighborhoods will be improved if you vote **YES on MEASURE 26-10!**

*(This information furnished by Betsy Radigan)*

The printing of this argument does not constitute an endorsement by Multnomah County, nor does the county warrant the accuracy or truth of any statement made in the argument.

**No arguments AGAINST this measure were filed.**

# CITY OF PORTLAND

## Measure No. 26-10

### ARGUMENT IN FAVOR

#### DO YOU LIVE IN SOUTHEAST PORTLAND?

There are over **39** reasons to vote **YES** on **MEASURE 26-10** and keep our neighborhood parks safe and sound!

**MEASURE 26-10** will make parks repairs and improvements in:

- Ed Benedict Park
- Johnson Creek Park
- Kenilworth Park
- Ladds Circles & Squares
- Laurelhurst Park
- Berrydale Community Garden
- Bloomington Park
- Mt. Scott Community Center & Pool
- Mt. Tabor Park
- Clinton Community Garden
- Col. Summers Community Garden
- Reed Community Garden
- Crystal Springs Rhododendron Garden
- Community Music Center
- Sellwood Pool
- Sewallcrest Community Garden
- E. Metro Community Center (new)
- Glenwood Park
- Creston Pool
- Harrison Park
- Lincoln Park
- Midland Park
- Kern Park
- Ventura Park
- Berkeley Park
- Lents Park
- Brooklyn Park
- Mt. Scott Park
- Oaks Bottom Park
- Clinton Park
- Powell Park
- Essex Park
- Woodstock Park
- Sunnyside School Park
- Sellwood Park
- Sewallcrest Park
- Walker Stadium
- Flavel Park
- Creston Park

All of these parks in our neighborhoods will be improved if you vote **YES** on **MEASURE 26-10!**

*(This information furnished by David and Jane Schue)*

The printing of this argument does not constitute an endorsement by Multnomah County, nor does the county warrant the accuracy or truth of any statement made in the argument.

### ARGUMENT IN FAVOR

#### DO YOU LIVE IN WEST PORTLAND?

There are over **36** reasons to vote **YES** on **MEASURE 26-10** and keep our neighborhood parks safe and sound!

**MEASURE 26-10** will make parks repairs and improvements in:

- North Park Blocks
- O'Bryant Square
- Pioneer Courthouse Square
- Multnomah Art Center
- SW Community Center & Pool (new)
- SW Soccer Fields (new)
- Terwilliger Parkway
- Vermont Hills Community Garden
- Water & Gibbs Community Garden
- Adams Community Garden
- April Hill Park
- Marquam Nature Park
- Hillside Community Center
- Pittock Mansion & Acres
- Front & Curry Community Garden
- Fulton Community Garden
- Gabriel Community Garden
- Washington Park District Office
- Hoyt Arboretum
- Lair Hill Park
- Pendleton Park
- Plaza Blocks
- Waterfront Park
- Healy Heights Park
- Council Crest Park
- Couch Park
- Portland Heights Park
- Burlingame Park
- Wilson High Pool
- Couch Park
- Hillside Park
- Wallace Park
- Duniway Park
- Hamilton Park
- Gabriel Park
- Washington Park

All of these parks in our neighborhoods will be improved if you vote **YES** on **MEASURE 26-10!**

*(This information furnished by Janice Deardorff)*

The printing of this argument does not constitute an endorsement by Multnomah County, nor does the county warrant the accuracy or truth of any statement made in the argument.

## CITY OF PORTLAND

**Measure No. 26-10****ARGUMENT IN FAVOR****SAFER PARKS FOR A SAFER PORTLAND — VOTE YES ON MEASURE 26-10**

- Parks play a critical public safety role. For a safer Portland, we need neighborhood parks that are safer and more secure.
- Portland's parks are not as safe today as they should be. Families, seniors and other park users are confronted by rundown buildings, dark restrooms, and badly-lit walkways. These conditions encourage crime, violence and vandalism — threatening our neighborhoods and diminishing our quality of life.
- Lack of adequate youth recreation facilities in our parks is another public safety problem. We must give young people positive outlets to channel their energy and help them stay out of trouble.
- **MEASURE 26-10** will fund better indoor and outdoor lighting, safer restrooms, modern security systems and other needed public safety improvements. It will also mean expanded youth recreation opportunities.
- If you want safer parks for a safer Portland, **VOTE YES on MEASURE 26-10!**

Charles Moose

Mike Schrunk

Vera Pool

*(This information furnished by Vera Pool)*

The printing of this argument does not constitute an endorsement by Multnomah County, nor does the county warrant the accuracy or truth of any statement made in the argument.

**ARGUMENT IN FAVOR****PARKS ARE VITAL TO NEIGHBORHOOD SCHOOLS — VOTE YES ON MEASURE 26-10**

- Parks and public education go hand-in-hand. Portland needs quality parks as part of a quality public education system.
- Throughout our city's history, parks and schools have developed together to serve the educational needs of our children and neighborhoods. Today over one quarter of all Portland parks and recreation centers are located directly next to a public school.
- Teachers in every school use park resources to educate our children about nature, art, culture and community values. The recreational opportunities which Portland's parks provide our schoolchildren are essential to their health, fitness and well-being. Without these resources and opportunities, Portland's young people will be forced to turn elsewhere.
- We owe it to ourselves and our city to maintain Portland's splendid partnership between parks and public education. That's why parents, students and teachers across our city are supporting **MEASURE 26-10** and urging you to vote "YES" for Portland's Parks.

Stephen Griffith

Roby Roberts

Stephen Kafoury

Lucious Hicks, IV

Marty Howard

Dr. Jack Bierwirth

Dr. George Benson

Dr. Anthony Palermini

Dr. Jacki Cottingim

Dr. Hudson Lasher

*(This information furnished by Dr. Jacki Cottingim)*

The printing of this argument does not constitute an endorsement by Multnomah County, nor does the county warrant the accuracy or truth of any statement made in the argument.