

# Measure No. 26-10

## ARGUMENT IN FAVOR

### SENIORS SUPPORT PARKS — PORTLAND SENIORS URGE YES VOTE ON MEASURE 26-10

- Portland's seniors love our parks. We are also among the biggest supporters of needed park improvements.
- Our parks and community centers help us to keep in touch with one another and to remain independent and active.
- We strongly support **MEASURE 26-10** because it will mean better facilities and expanded programs for seniors. For example, the new East Portland community center will be a great resource for local seniors.
- **MEASURE 26-10** will also fund better park safety and security. No one will benefit more than seniors from these anti-crime improvements.
- Portland's parks are for all of us to enjoy.
- We value our parks and understand the need to invest in their upkeep.
- Please join with us in voting **YES** for **MEASURE 26-10!**

Vivian Grubb, Senior Advocate

Charlotte Schwartz, Vice President,  
Kelly Encore for Seniors

Channing Briggs, Past Chair,  
Portland/Multnomah Commission on Aging

Bernie Medina, Member of "La Familia Hispana"

Sue Saki, Member of American  
Association of Retired Persons (AARP)

Ester McGinnis, Chair, Senior Center Task Force

Grace Fitzgerald, Chair, Mid-County Senior Center

Willie Harper, St. John's YWCA Advisory Committee

Shirley McGrew, Chair, Portland/Multnomah  
Commission on Aging

Ruth Currie, Chair, Older Womens League

Loaves and Fishes, the Meals on Wheels People

Neil Kelly, Activist and Volunteer

*(This information furnished by Vivian Grubb)*

The printing of this argument does not constitute an endorsement by Multnomah County, nor does the county warrant the accuracy or truth of any statement made in the argument.

## ARGUMENT IN FAVOR

### IF YOU CARE ABOUT SPORTS AND RECREATION — VOTE YES FOR MEASURE 26-10

- Parks are for people who enjoy sports, recreation and an active healthy lifestyle.
- A **YES** vote on **MEASURE 26-10** is for voters who use our Portland city parks today — and who want to be able to enjoy them even more in the near future.
- Portland's parks are great, but they have some very serious problems.
- Many recreation facilities are old, unsafe and in need of urgent repairs. Sportsfields and swimming pools are crowded, inadequate and out-of-date. There are tremendous team sport scheduling problems, and too many families and children are being short-changed. Even worse darkened walkways and restrooms raise serious night time safety concerns.
- Now is the time for park users to stand up and be counted. **Your YES vote in favor of MEASURE 26-10** will go a long way toward making Portland's parks safer and more enjoyable for everyone who loves and uses them.

Portland Metro Softball Association

Portland Youth Soccer Association

Oregon Amateur Soccer Association

Oregon Youth Soccer Association

Portland Basketball Association

Portland Baseball Association

Portland Volleyball Association

*(This information furnished by John L. Krier,  
Portland Youth Soccer Association)*

The printing of this argument does not constitute an endorsement by Multnomah County, nor does the county warrant the accuracy or truth of any statement made in the argument.

## CITY OF PORTLAND

## CITY OF TROUTDALE

**Measure No. 26-10**

Mayor

## ARGUMENT IN FAVOR

**PORTLAND'S PARKS ARE GOOD BUSINESS — VOTE YES ON MEASURE 26-10**

- In 1850, Portland's first pioneers decided to make it a city of parks as well as roses. Later, civic and business leaders added to this inheritance by making Portland a national leader in parks and public recreation.
- Today we continue to enjoy their great heritage. The August 1994 edition of **SUNSET** magazine cited Portland's world-class parks system as a key ingredient behind our neighborhood spirit and economic leadership.
- Nature enthusiasts and outdoor recreationists travel from around the world to enjoy and explore our parks — the natural jewels that make Portland such a one-of-a-kind place.
- But we cannot afford to rest on our laurels. The fact is, our parks need our help and they need it now.
- **MEASURE 26-10** will make our parks better, safer and more up-to-date. It will repair and improve the parks and facilities that serve our young people, families and seniors. It will ensure that Portland stays a place where people will want to visit, live, work and invest in the years ahead.
- Parks are vital to the future of our region, our city and our neighborhoods.
- **MEASURE 26-10** is a wise investment in the health and safety of our city.
- Please give them your **YES** vote on **MEASURE 26-10!**

Portland Metropolitan Chamber of Commerce

Association for Portland Progress

Portland Metropolitan Association  
of Building Owners and Managers

Portland Oregon Visitors Association

*(This information furnished by Wm. Gary Grimmer)*

The printing of this argument does not constitute an endorsement by Multnomah County, nor does the county warrant the accuracy or truth of any statement made in the argument.

**KAREN  
BURGER-KIMBER****OCCUPATION:** Business Management Consultant.**OCCUPATIONAL BACKGROUND:** Comptroller; Systems Analyst; Financial Analyst; Investment Advisor; Office Manager; Small Business Owner.**EDUCATIONAL BACKGROUND:** Hood River High School; Mt. Hood Community College; Marylhurst College — Business Management Degree Program.**PRIOR GOVERNMENTAL EXPERIENCE:** Councilor — City of Troutdale; Chair — Troutdale Citizens Advisory Committee; Chair — Multnomah County Animal Control Citizens Advisory Committee; East County Representative — BiState Policy Advisory Committee; East County Arts Alliance Task Force.**LET'S GET WHAT WE WANT, NOT TAKE WHAT WE GET**

As a citizen of the City of Troutdale for more than 17 years, I have seen many conditions change the landscape of our community. I am concerned about the future of our town and want to help keep it livable now and in the future.

Your vote will allow me to provide even stronger leadership to preserve our Troutdale "family". You will be helping me promote thoughtful development and healthy partnerships with local businesses and our neighboring communities. I will continue to:

- PROMOTE BETTER PLANNING AND DEVELOPMENT
- ASSURE FINANCIAL ACCOUNTABILITY
- ENCOURAGE CITIZEN INVOLVEMENT

Karen's record is proof that she knows how to go beyond rhetoric and get things done:

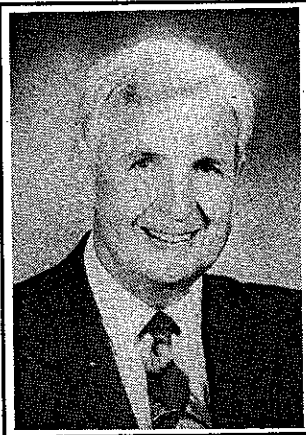
- After 5 years of hard work, she managed to preserve valuable open space for Columbia Park, home of "Imagination Station".
- She stopped a zone change that would have allowed another regional shopping mall to be developed.
- She introduced Troutdale's first referendum to the voters which halted the formation of an Urban Renewal Agency that would have put city government in the development business using tax dollars.
- As Chair of the Citizen's Advisory Committee, she proposed expanding the C.A.C.'s role to include studying more than land use issues, i.e. traffic planning and public safety. The result has been the development of an active forum for citizen participation.
- Her work with the police department resulted in a bicycle patrol program.
- She is currently submitting an initiative to the voters that, if approved, will cause the City to balance it's budget using existing dollars, not additional taxes or savings.

*(This information furnished by  
Committee to Elect Karen Burger-Kimber)*

# CITY OF TROUTDALE

Mayor

Councillor, Pos. 1



PAUL  
THALHOFER

**OCCUPATION:** Mayor of Troutdale; Insurance Agent.  
**OCCUPATIONAL BACKGROUND:** Insurance Management; General Sales; Private Investigator and Legal Research; Lawyer; Judge; Janitor; Lumber Piler; Truck Driver; Ranch Hand; U.S. Navy; U.S. Air Force Reserve.  
**EDUCATIONAL BACKGROUND:** Prineville Grade School; Crook County High — Prineville; University of Oregon — BA, LLB.  
**PRIOR GOVERNMENTAL EXPERIENCE:** Troutdale Planning Commission and City Council; Pendleton Mayor and City Council; Multnomah County Charter Review Committee; Chair, Multnomah County Citizen Involvement Committee; Chair East County Coordinating Committee; President, Troutdale Area Chamber of Commerce.

Greetings to Troutdale residents:

It has been my privilege to have served as your Mayor for the past 1-1/2 years after having been three-times elected to the City Council. During this time, I believe I have provided the leadership to help make our city safe, livable, progressive and financially sound without sacrificing the uniqueness and character which we all cherish. But much more needs to be done!

- I want to maintain a strong police department to protect our lives and our property and to crack down on speeding in our neighborhoods.
- I would like neighborhood associations organized under the Citizen Advisory Committee umbrella to tackle all neighborhood concerns in addition to the on-going neighborhood watch.
- I want to continue our efforts to protect Beaver Creek and other environmentally sensitive greenways, waterways and wildlife habitats which add so much to our scenic beauty and quality of life.
- I would like to see our downtown area finished, complete with specialty shops, antique stores and other businesses which will tastefully enhance our downtown district.
- Annexation of commercial and industrial land north of the freeway should be initiated and we need to encourage environmentally clean business and industry to locate in that area to provide jobs for our citizens.
- I would like to see a city-sponsored recreational program year around with activities after school in our parks and summer programs continued.

I believe I have the education, experience and vision to continue to serve you well as your Mayor.

Sincerely,  
Paul

*(This information furnished by Paul Thalhofer)*



PATTI  
POLLY

**OCCUPATION:** Owner of small business; secretary/office manager for local engineering firm; coordinator of \$10,000 grant project to restore historical landmark in Troutdale.  
**OCCUPATIONAL BACKGROUND:** Secretary since 1978; legal secretary since 1983; paralegal since 1989.  
**EDUCATIONAL BACKGROUND:** High School graduate; 2 years of college.  
**PRIOR GOVERNMENTAL EXPERIENCE:** President — Troutdale Planning Commission, 1994. Member — Troutdale Planning Commission since 1991. Member — Downtown Task Force. Member — Special Committee appointed by City Council to examine duties and responsibilities of the Citizens Advisory Committee. Member — Parks Advisory Board 1991-1994.

Troutdale faces increasing pressure from growth. Don't let Troutdale become another Tigard or Beaverton. Troutdale needs leadership to ensure that the increasing population in our community doesn't lead to reduced livability — I can positively contribute to that leadership.

I have already demonstrated that Troutdale can accomplish almost anything.

Our Parks were in disrepair — the Parks Advisory Board sponsored and the voters of Troutdale passed a Parks Bond Measure by a 2-to-1 margin.

Troutdale's Beaver Creek needed protection — The Friends of Beaver Creek work with industry and all of Troutdale neighbors to improve the creek and provide for responsible development, proving that business and the environment can live in harmony.

Troutdale needs leaders willing to make commitments and to work hard to make them happen — I work hard to keep Troutdale a unique and wonderful place to live and would work even harder as your City Councillor. Together we can maintain Troutdale's livability even as we improve and revitalize our downtown and preserve the unique, historical beauty of Troutdale.

*(This information furnished by Patti L. Polly)*

## CITY OF TROUTDALE

## Councillor, Pos. 1



**MARGE  
SCHMUNK**

**OCCUPATION:** Homemaker — City Councillor — Bookkeeper.  
**OCCUPATIONAL BACKGROUND:** Material Control, White Stag Manufacturing, Payroll Clerk, Northwest Natural Gas Company.

**EDUCATIONAL BACKGROUND:** Franklin High School.

**PRIOR GOVERNMENTAL EXPERIENCE:** 12 Years Troutdale City Council, 8 Years Troutdale Planning Commission, C.A.C. Troutdale Comprehensive Plan.

Marge has been a resident of Troutdale for 22 years. She has been actively involved in the community for the last 20 years. Recently, Troutdale and neighboring communities have been subject to rapid growth which, if left unchecked, could have created nightmarish traffic congestion, along with urban sprawl that could have threatened Troutdale's livability.

Through her efforts as Chairperson of the Planning Commission, Citizen's Advisory Committee, and representative to East County's Transportation Committee, Marge has helped pave the way for a continued high quality of life in Troutdale by planning ahead for the future.

Marge has continued to voice your loud opposition to a parkway that threatens to diagonally split the city if located here. "I am committed to preserving Troutdale's quality of life by representing your views."

It is this kind of leadership that has brought us the completion of 257th, sidewalks on Stark Street, much needed improvements to Buxton Street, and the widening of the overpass on Graham Road. All of which were vital to maintaining traffic flow and our livability.

Through the years, Marge has gained a great respect for citizen involvement which is basic to representative government. This is evidenced by her support of the newly revised Troutdale City Charter which was rewritten by a group of citizen volunteers, and will also be voted upon in this general election.

Experience and understanding are the keys to getting things done. You have to understand what your constituents are after in a Councilperson to be able to represent them. Putting ideas to work efficiently, without getting involved in "petty politics" takes experience.

*(This information furnished by Marjorie G. Schmunk)*

## Councillor, Pos. 1



**PAT  
SMITH**

**OCCUPATION:** Inventory Control/Purchasing Agent.

**OCCUPATIONAL BACKGROUND:** Full-charge Bookkeeper, Office Manager, Small Business Owner/Operator.

**EDUCATIONAL BACKGROUND:** High School — Logansport, Indiana; Office management studies — University of Cincinnati.

**PRIOR GOVERNMENTAL EXPERIENCE:** City of Troutdale Budget Committee, City of Troutdale Parks Advisory Committee.

I have lived in Troutdale for more than 22 years and have enjoyed what our small town environment has had to offer. However, now with the our tremendous growth, we need to better management our resources.

My work on the budget committee has made it clear to me that we are not being responsible and using our money wisely. It is time to replace the "business as usual" folks on our council with those of us who can bring a fresh perspective to the city.

The voters have made it clear that they want their government to take better care of managing tax dollars. However, our "old time" entrenched politicians are not getting the message.

I would like the opportunity to help the city re-focus its management style and respond to the voters, not the bureaucrats. I want to stop the "rubber-stamp" mentality of my incumbent opponent. It is time for us to think for ourselves. It is important to put the policy making back in the hands of the City Council where there is accountability to the voters.

**Let's stop the "BLOAT" cycle.**

Did you know that:

Troutdale is approaching 60 employees, more than any other town of its size in Oregon and we don't have many of the support services that other cities enjoy like a fire department.

We need policies in place that help us save for future improvements, repairs or replacement instead of spending every cent in the here and now.

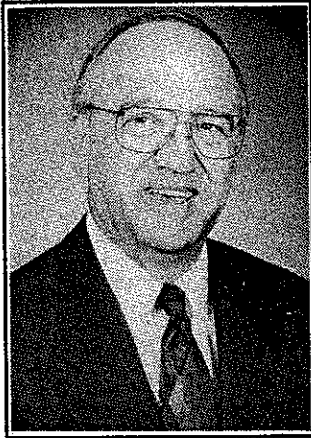
Lets look at fees and charges that fit our needs rather than following the upward trend.

**LET'S RUN OUR GOVERNMENT LIKE A BUSINESS, WITH  
A CRITICAL EYE ON THE BOTTOM LINE.**

*(This information furnished by Patricia A. Smith)*

# CITY OF TROUTDALE

## Councillor, Pos. 3



**BRUCE  
THOMPSON**

**OCCUPATION:** Tax Consultant & Enrolled Agent. President and Owner, Double T Tax Associates, Gresham, Oregon. Instructor. Partner, Brass Tax Seminars, Gresham, Oregon.

**OCCUPATIONAL BACKGROUND:** Teacher, Central High School, Independence, Oregon; Director of Training & Public Relations, H & R Block, Portland, Oregon; Machine Operator, Del Monte Corporation, Salem, Oregon.

**EDUCATIONAL BACKGROUND:** Master of Arts, Portland State University, Portland, Oregon 1968; Bachelor of Arts, Western Oregon State College, Monmouth, Oregon 1963 & 1964; Diploma, Rainier Union High School, Rainier, Oregon 1959.

**PRIOR GOVERNMENTAL EXPERIENCE:** Planning Commission, Monmouth, Oregon 1977; Citizen's Advisory Committee, Troutdale (chairman 1 year) 1986-1989; Planning commission, Troutdale 1989-1990; City Council, Troutdale 1991-present.

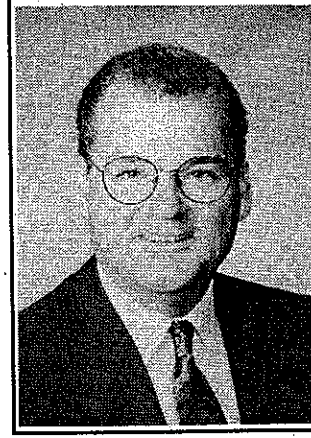
Troutdale needs mature and reasonable leadership during the coming years. The nineties will continue to be a period of rapid growth for the entire East County area. The Council must meet the challenges this growth will bring with wisdom and sound judgment if Troutdale is to retain its livability. The Council will have to balance the needs of new development with the rights of current residents, and be able to withstand pressures from partisan interests. Preservation and enhancement of the quality of life in our city should be a central principle in all actions of the council.

At the same time, Troutdale exists within a larger metropolitan area, and our city will have to cooperate with other metropolitan jurisdictions in maintaining livability for all. We have worked to develop a successful, cooperative alliance with our neighboring cities in many areas such as emergency response capability. There will undoubtedly be other areas in the future where we and our neighbors will work side by side in meeting the future.

Citizen involvement is an important part of our decision-making process. I encourage all citizens to become involved with the issues facing the city, and to make your ideas and desires known. Only in this way can we have a Council that truly reflects the citizens its represents.

*(This information furnished by Bruce L. Thompson)*

## Councillor, Pos. 5



**DON  
LLOYD**

**OCCUPATION:** Self-employed attorney in private practice since 1990.

**OCCUPATIONAL BACKGROUND:** President, First Farwest Corporation; 1984-1989. General Counsel, First Farwest Corporation, 1980-1984. Attorney in private practice, 1973-1979 United States Marine Corps/Vietnam Vet., 1966-1968.

**EDUCATIONAL BACKGROUND:** B.A., Portland State University, 1973. J.D. magna cum laude, Northwestern School of Law, Lewis and Clark College, 1973.

**PRIOR GOVERNMENTAL EXPERIENCE:** Appointed City of Troutdale City Councillor, 1993 to present, planning commissioner 1991-1993, budget committee 1979-1980.

My primary goal in seeking to serve on the City Council is to preserve the livability of the City for its citizens. I define livability as good police protection, good parks, and good schools, as well as preserving the small town atmosphere where neighbors are friendly and can come together to solve community problems through mutual cooperation and understanding.

In order to have these things the City must develop an economic base in its zoned commercial and industrial lands that will generate the tax revenue to pay for police, parks, and schools. I have worked with regional governments and economic development organizations to achieve these goals.

Troutdale's primary obligation is to its citizens. To promote the interests of its citizens the City must be involved, cooperate where possible, and plan and coordinate with other governmental entities in the Region. Certain problems (environmental, crime, transportation, etc.) require Regional cooperation and coordination. I am willing to devote the time necessary for this cooperation and coordination.

Troutdale citizens should know that generally speaking, I believe the primary responsibility for increased costs associated with new development and new people in the area must be borne by the new development and the new people.

*(This information furnished by Don K. Lloyd)*

## CITY OF TROUTDALE

**Measure No. 26-22****BALLOT TITLE****CITY CHARTER REVISION****QUESTION:** Should the 1942 City Charter be Revised?

**SUMMARY:** City charter revision referred by the City Council. The revision updates and changes the 1942 City Charter. It was drafted by a citizen committee and modified by the city council. The revised charter defines city powers and structure of government. Continues council of six councilors. Adds mayor as voting member of council. Creates four year term of office for mayor. Subjects city administrator to mayor and council oversight. Limits councilor interference in certain staff decisions.

more complicated provisions on adoption of an ordinance.)

If approved, the charter revision goes into effect on January 1, 1995. If the revision is not approved, the city will continue to be governed by the 1942 Charter.

Submitted by  
George Martinez,  
City Recorder

Additional information on this measure  
can be obtained by calling: 665-5175

**EXPLANATORY STATEMENT**

This measure revises the Troutdale City Charter. It is referred to the voters by the Troutdale City Council. The proposed revision updates and changes the 1942 City Charter. The revision was drafted by a citizen committee and modified by the City Council.

A city charter is the constitution for a municipal government. A charter defines the scope of a city's powers and its structure of government.

The proposed charter has provisions on the city's powers, its form of government, operation of the city council, municipal officers, elections, ordinance adoption processes, and other matters. Many of these provisions are similar to the current charter but are written more clearly.

The proposed charter includes these features:

1. The mayor is a voting member of the city council. The council is composed of six councilors and the mayor. The mayor has no veto power. (Under the current charter, the mayor votes only to break a tie vote among the councilors or when allowed by ordinance.)
2. The term of office for the mayor is increased to four years. (The term of office is two years in the present charter.)
3. The mayor oversees the operation of the city. The mayor has any executive power that has not been given to other city officers by an ordinance. (The mayor has more specific executive duties under the current charter.)
4. The office of city administrator is established. The duties of the city administrator must be set out by ordinance. (The current charter does not refer to a city administrator.)
5. Except in council meetings, a councilor cannot attempt to influence certain decisions of the city administrator and city employees. Those decisions are ones relating to personnel matters, the awarding of city contracts or the disposition of city property. (The present charter has no equivalent provision.)
6. Certain notice and public hearing requirements must be met before adoption of an ordinance. The ordinance adoption process may be expedited by vote of all of the council members. (The current charter has similar but

No arguments "FOR" this measure were filed.

# CITY OF TROUTDALE

## Measure No. 26-22

### ARGUMENT IN OPPOSITION

This new proposed charter will accomplish the following:

Give more power to the administration of this city, making the position answer to the mayor alone and get the council out of the loop.

Take choice away from the voters to select a majority of the council at every election. Now citizens will only be able to change the majority of our elected officials every 4 years instead of every 2 years.

Puts the Mayor position in the Executive and Legislative branches of our government at the same time instead of separating them as we normally do.

**Our new proposed city charter is not ready for the voters. It has been hastily put together and needs more time and review before implementation.**

Send a message to our City Council that more time is needed to come up with a charter that better serves our community.

Why is this charter coming before the voters so soon? Have you had time to understand the consequences of this new charter? If in doubt, take your time and vote **NO** to allow more time for consideration of this document.

**VOTE NO ON THE NEW CITY CHARTER**

*(This information furnished by Karen Burger-Kimber,  
Committee for Citizen Run Government)*

The printing of this argument does not constitute an endorsement by Multnomah County, nor does the county warrant the accuracy or truth of any statement made in the argument.

# CITY OF WOOD VILLAGE

Council, Pos. 1

## MICHAEL F. AMEN

**OCCUPATION:** Assembly person at Allied Corp. I build heavy equipment. I'm also a military policeman in the Oregon National Guard.

**OCCUPATIONAL BACKGROUND:** 2 years in Army Reserves — 92-94. 2 years Allied Systems 92-94. 4.5 years active duty Army 87-92. 4 years active duty Marine Corps.

**EDUCATIONAL BACKGROUND:** Central Texas College 21 sem hrs. 1989-1990. David Douglas High School — 1976-1980. Military Police School — Ft. McClellan Alabama 1980. Traffic Accident Investigations School — Vilseck Germany 1990.

**PRIOR GOVERNMENTAL EXPERIENCE:** None.

---

## STEVEN D. RODRIGUES

**OCCUPATION:** Shop Foreman; Viking Automatic Sprinkler Co.; 16 yrs.; Paid. Secretary Treasurer; Beararion's Coffee Express; 1-3/4 yrs.; Unpaid.

**OCCUPATIONAL BACKGROUND:** Denny's Restaurant; cook.  
**EDUCATIONAL BACKGROUND:** Napa Sr. High School; Napa, CA; Grade 12.

**PRIOR GOVERNMENTAL EXPERIENCE:** City of Wood Village Planning Commission.

---

Council, Pos. 2

## DONALD L. ROBERTSON

**OCCUPATION:** Retired.

**OCCUPATIONAL BACKGROUND:** Portland School Dist. # 1 Maintenance Dept. Grounds & Asbestos Depts.

**EDUCATIONAL BACKGROUND:** Spring Lake Elementary — Wessington, S.D. Miller High School — 12th. Various courses at Mt. Hood Community & Portland Community Colleges — no degree.

**PRIOR GOVERNMENTAL EXPERIENCE:** Elected in 1978 to Wood Village City Council and re-elected through this date.

---

Council, Pos. 4

## JANET VANDE RIET

**OCCUPATION:** Fujitsu Microelectronics — Product Engineering Tech 8/89-present.

**OCCUPATIONAL BACKGROUND:** National Semiconductor 3/82-8/89.

**EDUCATIONAL BACKGROUND:** Utah Tech 2 years. Mt. Hood 1 year.

**PRIOR GOVERNMENTAL EXPERIENCE:** None.