

High Value Soil in Zone EFU (East Multnomah County)

0 0.5 1 Miles

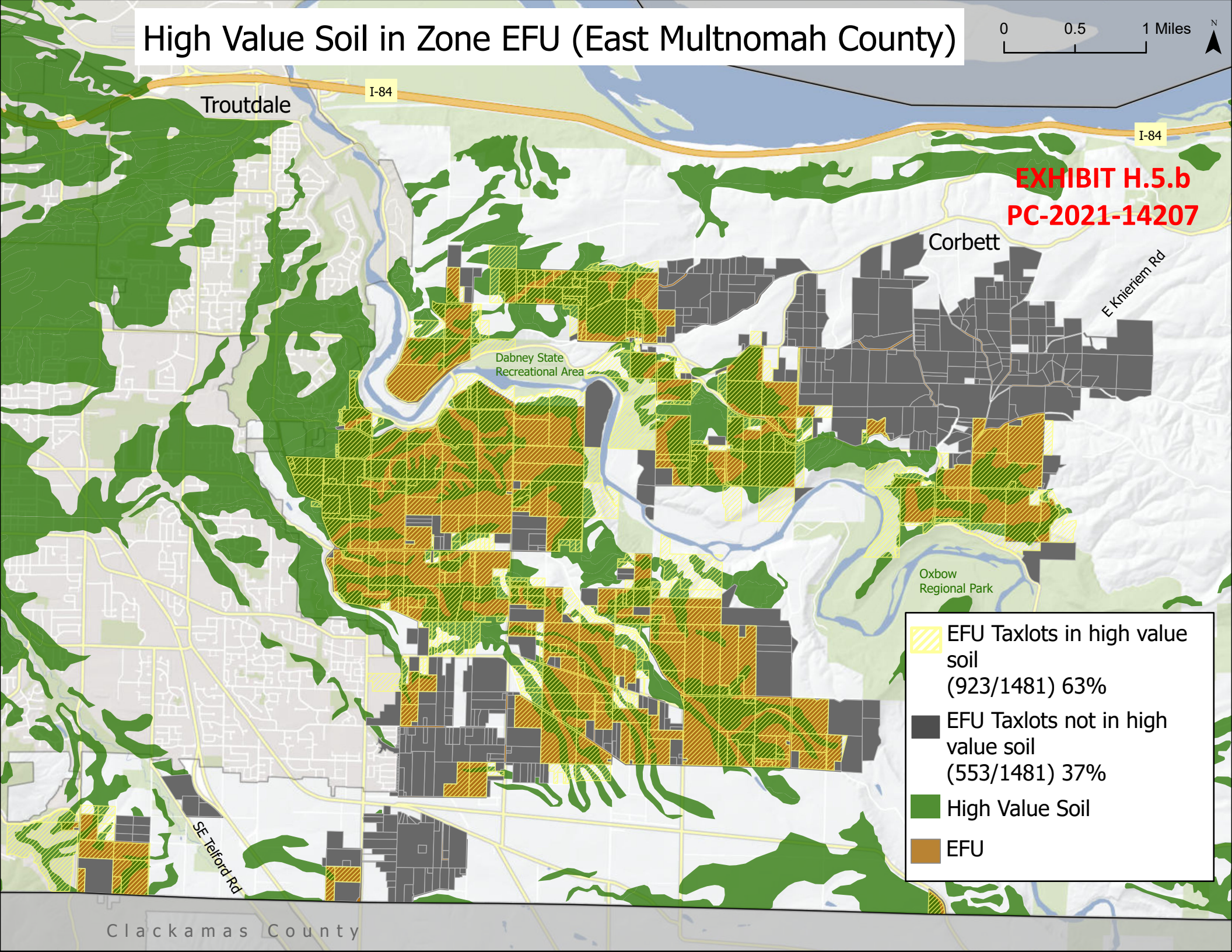






EXHIBIT H.5.b
PC-2021-14207

-  EFU Taxlots in high value soil (923/1481) 63%
-  EFU Taxlots not in high value soil (553/1481) 37%
-  High Value Soil
-  EFU

Clackamas County