

# Location Map

Hot Spot: South of Plainview Road

NW Cornelius Pass Road  
South of Plainview Road



# Presented Alternatives

## Hot Spot: South of Plainview Road

Improvement Description	Prelim. Cost Estimates
<b>PR1:</b> Improved curve signing and clearing for sight distance	\$30,000
<b>PR2:</b> Improved curve signing, shoulder widening and guardrail upgrades	\$400,000
<b>PR3:</b> Curve realignment (40 MPH) and shoulder widening	\$1.3 million

### Other Ideas

The team has received input from a variety of sources. The following ideas have been heard in addition to the presented alternatives and will be considered:

- Realign roadway to utilize existing railroad tunnel (reduce traffic volume at curve)

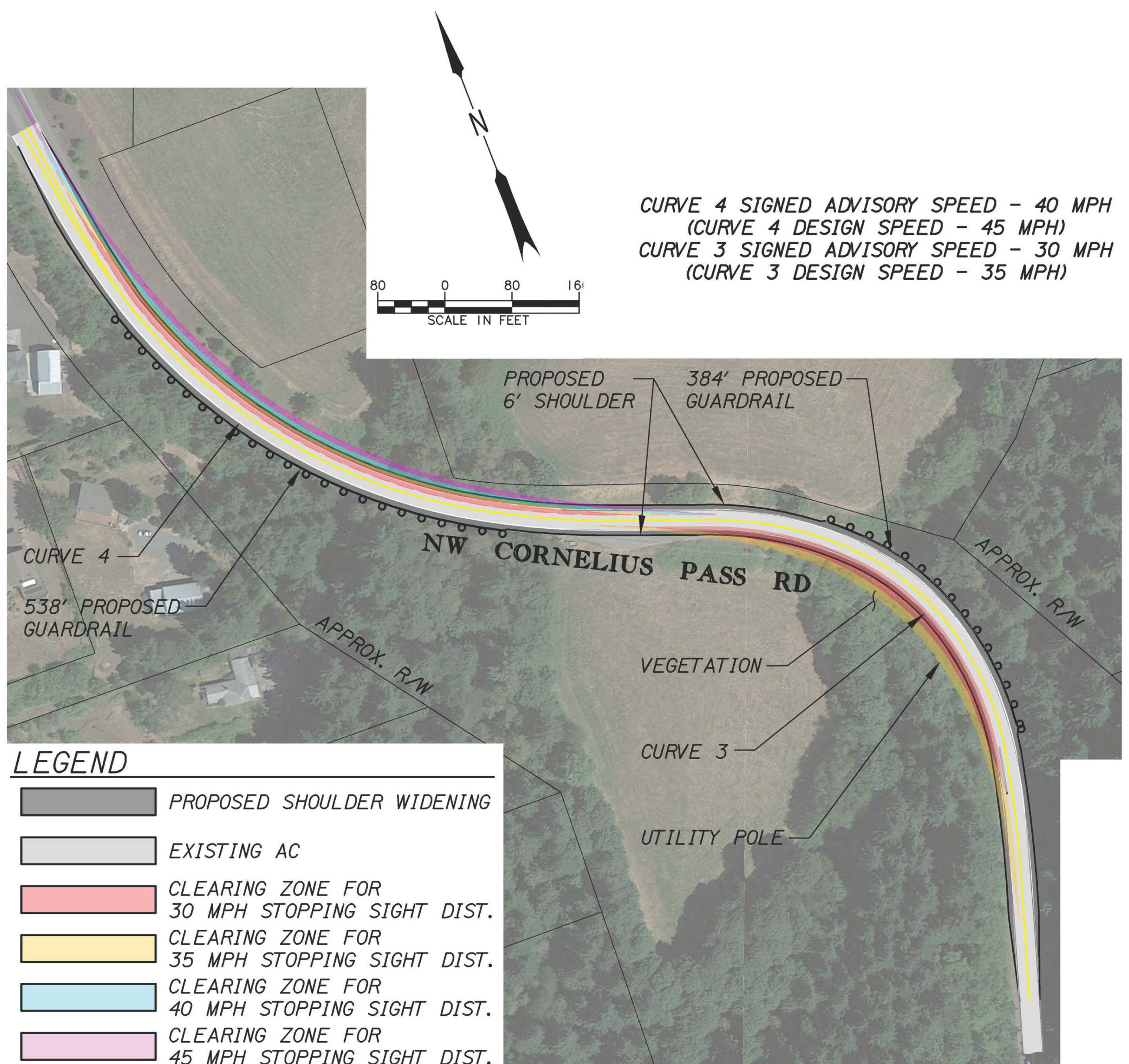
Input and ideas from the meeting tonight will be considered before a final recommendation is made.

# Presented Alternatives

## Hot Spot: South of Plainview Road

### PR2

## Technical Detail: Shoulder, Guardrail and Stopping Sight Distance Improvements



# Presented Alternatives

## Hot Spot: South of Plainview Road

### PR3

## Technical Detail: Curve 3 Realignment and Shoulder Widening

CURVE 4 SIGNED ADVISORY SPEED - 40 MPH  
(CURVE 4 DESIGN SPEED - 45 MPH)  
CURVE 3 SIGNED ADVISORY SPEED - 35 MPH  
(CURVE 3 DESIGN SPEED - 40 MPH)

